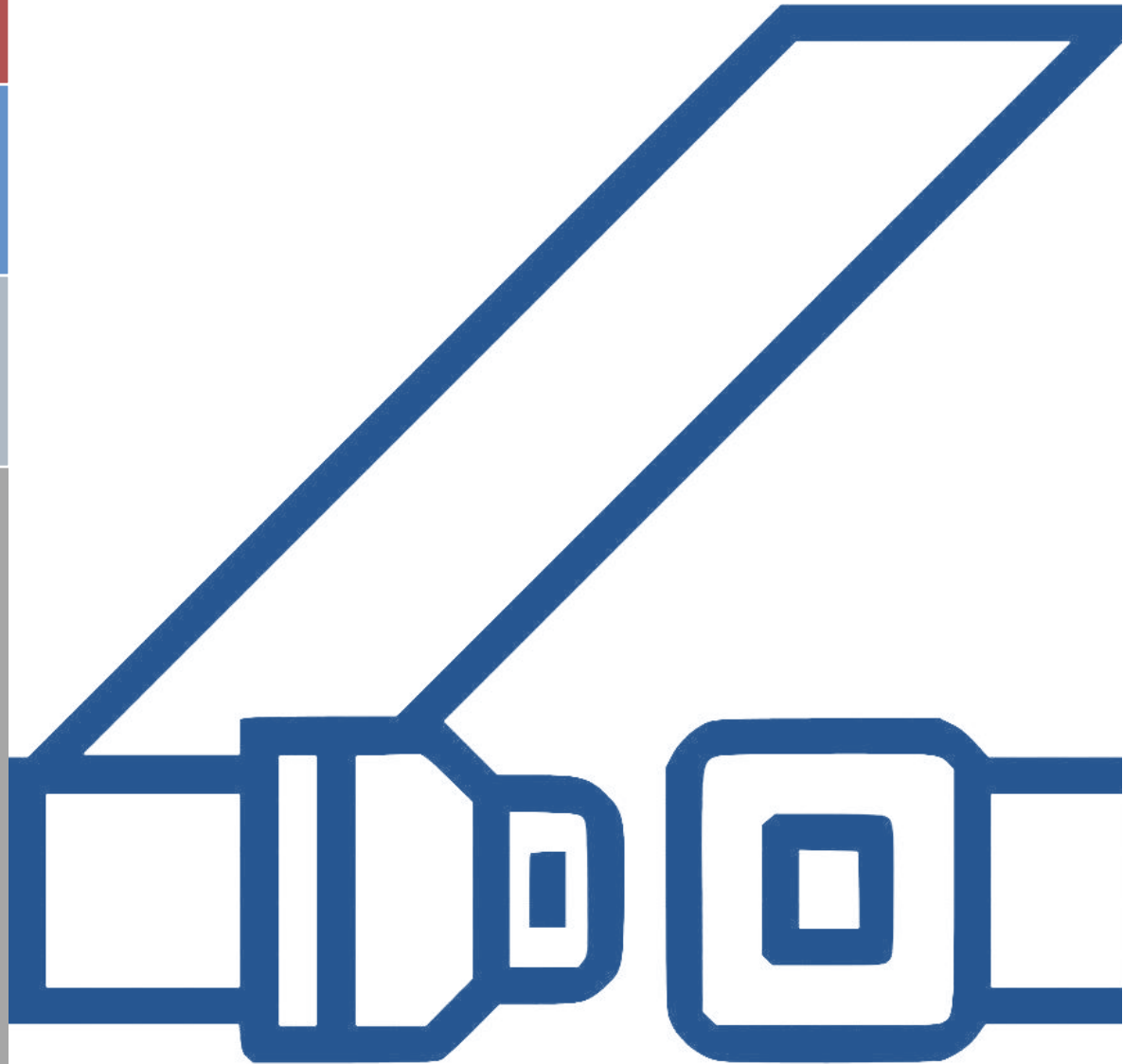


2024

# Missouri Teen Seat Belt Survey

Final Report

Submitted By: Missouri Safety Center, February 2025



# Table of Contents

Executive Summary .....	3
Survey Parameters, Guiding Principles & Sampling Procedure .....	5
Key Findings .....	6
Attachment A – List of High Schools by District.....	20
Attachment B – Survey Instruments .....	26
Attachment C – Teenage Driver & Teenage Passenger Combined Seat Belt Use by District by School.....	29
Attachment D – Teenage Driver & Teenage Passenger Combined 60% or Less Seat Belt Use by School .....	38

## Executive Summary

A Teen (High School) Seat Belt Observational Survey was conducted in the State of Missouri from October 1st through October 31st, 2024, by the Missouri Safety Center. This effort was funded by the Highway Safety & Traffic Division of MoDOT. Most data collectors (surveyors) were identified and trained in 2020. Training in 2024 was conducted on an as-needed basis.

One hundred percent of the observations were collected in the AM timeframe. Observations were conducted Monday through Friday with 21.5 percent on Monday, 24.0 percent on Tuesday, 18.5 percent on Wednesday, 19.0 percent on Thursday and 17.0 percent on Friday. Ninety-nine percent of the observations were obtained in dry weather with 1 percent being obtained in wet weather.

A total of 28,469 observations were collected at 150 high schools. Two instruments were used to collect these data; one instrument focused on the survey site information and the other targeted the vehicle type, both driver and front seat outboard passenger classification, restraint status, gender, race and any other occupants in the vehicle.

There were 10,901 teenage and 9,384 adult drivers observed with 23 driver classifications unknown. In addition, 8,161 front seat outboard passengers were identified of which 7,411 were teenagers, 275 adults, 414 children and 61 with the classification of unknown

The following is a list of the major findings:

- The 2024 seat belt use for all teenage drivers and teenage front seat outboard passengers combined was 74.0 percent, this is a 2.2 percent increase when compared to the survey findings of 71.8 percent in 2022.
- There were 10,901 teenage drivers observed of which, 7,965 or 73.1 percent were using seat belts. This is a 2.9 percent increase over the 70.2 percent using seat belts in 2022. This number is still well below the 2024 statewide seat belt use rate of 88.3 percent.
- Female teenage drivers seat belt use was 13.0 percent higher than male teenage drivers at 79.4 and 66.4 percent, respectively. Seat belt use among teenage male drivers increased by 3.9 percent when compared to the 2022 survey results (62.5%). Seat belt use among teenage female drivers also increased by 1.9 percent when compared to the 2022 survey results (77.5%)
- Of all the drivers observed 9,123 (44.9%) were male and 11,154 (54.9%) were female with 31 (0.2%) of unknown gender. Female and male teenage drivers were equally observed with slightly more females observed than males (51.3% to 48.6% with 0.1% unknown)
- Of the passengers observed 3,710 (45.5%) were male and 4,359 (53.4%) were female with 92 (1.1%) of unknown gender.
- In the 2024 Teen survey seat belt use for both adult drivers (74.5%) and teenage drivers (73.1%) increased when compared to the 2022 survey results by 3.4 and 2.9 percent, respectively. (2022 data adult drivers 71.1% / teenage drivers 70.2%)
- Seat belt use for the front seat outboard teenage passengers was 77.2 percent when riding with an adult driver. The adult drivers seat belt use in this situation was 74.7 percent.
- When a teenage driver had an adult front seat outboard passenger, seat belt use for both was 90.9 percent.
- When there was a teenage driver with a teenage front seat outboard passenger seat belt use was the same at 72.8%. This is an increase of 2.8 percent for teenage drivers and 2.3 for teenage passengers, when compared to the 2022 survey results. (2022 data teenage driver 70.0% / Teenage passenger 70.5%)

- Of the male teenage drivers, 67.7 percent wore seat belts when there was a teenage front seat outboard passenger in the vehicle. The teenage passengers seat belt use was slightly higher at 68.8 percent.
- When the teenage driver was female and there was a teenage front seat outboard passenger, the drivers seat belt use was 77.7 percent, and the passengers was slightly lower at 76.5 percent. The female drivers seat belt use was 10 percent higher than male teenage drivers under these circumstances.
- Teenage drivers of vans were most often belted at 82.2 percent. Only 56.1 percent of the teenage drivers in trucks were belted.
- Of the drivers (adults and teenagers) and passengers (adults, teenagers, and children) observed, white was the most frequent race observed with 85.7 percent of the drivers and 84.7 percent of the passengers; Asian was the least observed with 0.6 percent for drivers and 0.7 percent for passengers; however, the Asian drivers had the highest seat belt use at 89.6 percent. African American drivers had the lowest use rate at 64.3 percent.
- The MoDOT Districts of SL (82.1%), and SW (80.2%), had the highest seat belt use when the teenage drivers and teenage outboard front seat occupants were combined. In contrast, the MoDOT Districts of NW (65.1%) and SE (61.8%), had the lowest observed seat belt use among this group.
- Teen and adult female drivers had the highest seat belt use at 51.3 and 59.2 percent, respectively. As with the drivers, teen and adult female passengers had the highest seat belt use at 54.1 and 58.2 percent, respectively. Seat belt use for teenage male drivers was higher than adult male drivers at 48.6 and 40.6 percent, respectively.

## Survey Parameters, Guiding Principles & Sampling Procedure

In 2004, the Missouri Safety Center was requested by the Highway Safety & Traffic Division of the Missouri Department of Transportation to conduct a High School Seat Belt Observational Survey. In preparation for the 2004 survey, several meetings were held to outline the survey parameters, guiding principles, and sampling procedures.

Five guiding principles, identified through these collaborative meetings, served as the underlying basis for the sampling plan used in this study.

- The individual public high school would be the basic sample unit at which seat belt use observations would be made.
- The seat belt usage rates of high school students would be computed for each of the ten MoDOT Districts. In 2012 MoDOT went from ten districts to seven; the high school survey was adjusted to meet this requirement.
- The number of schools selected from each MoDOT District would be in proportion to the number of schools that district has in comparison to the state total of 527 public high schools.
- The high schools within each District would be selected in their descending order of student enrollment to maximize the number of high school students from each MoDOT District.

The sampling procedures involved obtaining a list of all public high schools and their corresponding student enrollments from the Missouri Department of Elementary and Secondary Education. These were sorted by county and aggregated by MoDOT Districts.

The specific number of high schools to be included from each MoDOT District was computed by multiplying the Districts percentages of the state's public high schools by the total number of high schools to be observed. To maximize the number of students observed within each MoDOT District, the schools were placed in descending order of student enrollment. Individual schools were then selected in their order of descending enrollment.

Every Teen seat belt survey from 2004 through 2018 was conducted as a replication of the former year and each took place during the month of April. However, in 2020, due to COVID the survey was rescheduled and took place during the month of October. In 2020 it was decided that the survey would continue to be conducted during the month of October going forward.

Over the history of the survey the same 150 high schools have been observed. In preparation for the 2022 survey, several meetings were held between the Highway Safety & Traffic Division of the Missouri Department of Transportation and the Missouri Safety Center to discuss reselection of schools. Using the same parameters, guiding principles, and procedures used in the 2004 survey, new schools were selected in 2022.

A total of 150 schools were selected for the study. Attachment A is a list of the schools selected for the survey by the MoDOT districts.

Two instruments were used to collect these data: Site Summary Form, Driver and Passenger Form (See Attachment B). The Site Summary Form identifies the MoDOT District, school, day of week, and road conditions. The data elements on the Driver and Passenger Form are vehicle type, driver classification (adult or teenage), driver restraint status, gender, race (White, African American, Hispanic/Latino, Asian or unknown), the classification of the front seat outboard passenger (adult, teenager, or child), restraint status, gender, race, and additional passengers.

## Key Findings

Table 1 shows the number of schools surveyed and the number of counties represented by MoDOT District. There are a total of 150 schools from 77 counties: 70 percent of the 115 counties (including the City of St. Louis), in the State.

**Table 1**  
**Number of Schools and Counties**  
**by MoDOT District**

MoDOT District	Number of Schools Surveyed	Number of Counties
Northwest (NW)	20	14
Northeast (NE)	12	8
Kansas City (KC)	24	7
Central (C)	18	14
St. Louis (SL)	24	4
Southwest (SW)	27	13
Southeast (SE)	25	17
<b>TOTAL</b>	<b>150</b>	<b>77</b>

The number of total observations and the percent of the total sample by MoDOT District are presented in Table 2. The Southwest District had the largest percent of the total observations, 4,818 or 16.9 percent, while the Northeast District had the fewest, 2,242 or 7.9 percent.

**Table 2**  
**Frequency and Percent of Observations**  
**by MoDOT District**

MoDOT District	Freq.	%
Northwest (NW)	4,100	14.4
Northeast (NE)	2,242	7.9
Kansas City (KC)	4,451	15.6
Central (C)	4,119	14.5
St. Louis (SL)	4,331	15.2
Southwest (SW)	4,818	16.9
Southeast (SE)	4,408	15.5
<b>TOTAL</b>	<b>28,469</b>	<b>100</b>

Table 3 lists the number and types of vehicles observed during the survey. The SUV was the most frequent vehicle observed (40.3%), whereas the van was the least likely (5.4%).

**Table 3**  
**Frequency of Observations by Vehicle Type**

Vehicle Type	Freq.	%
Car	7,149	35.2
SUV	8,174	40.3
Truck	3,882	19.1
Van	1,103	5.4
<b>TOTAL</b>	<b>20,308</b>	<b>100</b>

Of the drivers observed, 53.7 percent were teenagers. Most of the passengers were also teenagers, 90.8 percent. Table 4 depicts these data.

**Table 4**  
**Frequency of Drivers and Passengers**  
**by Classification**

Classification	Driver		Passenger	
	Freq.	%	Freq.	%
Teenager	10,901	53.7	7,411	90.8
Adult	9,384	46.2	275	3.4
Child	NA	NA	414	5.1
Unknown	23	0.1	61	0.7
<b>TOTAL</b>	<b>20,308</b>	<b>100</b>	<b>8,161</b>	<b>100</b>

There were two classifications of drivers (adult/teenager) and three for front seat outboard passengers (adult/teenager/child) observed. Frequency of drivers by gender and classification is reflected in Table 5. Of the drivers observed 9,123 (44.9%) were male and 11,154 (54.9%) were female with 31 of unknown gender.

**Table 5**  
**Frequency of Drivers**  
**by Gender and Classification**

Drivers	Male		Female		Unknown	
	Freq.	%	Freq.	%	Freq.	%
Teenager	5,301	48.6	5,589	51.3	11	0.1
Adult	3,808	40.6	5,557	59.2	19	0.2
Unknown	14	60.9	8	34.8	1	4.3
<b>TOTAL</b>	<b>9,123</b>	<b>44.9</b>	<b>11,154</b>	<b>54.9</b>	<b>31</b>	<b>0.2</b>

Table 6 reflects the frequency of passengers by gender and classification. Of the passengers observed 3,710 (45.5%) were male and 4,359 (53.4%) were female with 92 of unknown gender.

**Table 6**  
**Frequency of Passengers**  
**by Gender and Classification**

Passenger	Male		Female		Unknown	
	Freq.	%	Freq.	%	Freq.	%
Teenager	3,359	45.3	4,007	54.1	45	0.6
Adult	111	40.4	160	58.2	4	1.4
Child	230	55.6	181	43.7	3	0.7
Unknown	10	16.4	11	18.0	40	65.6
<b>TOTAL</b>	<b>3,710</b>	<b>45.5</b>	<b>4,359</b>	<b>54.2</b>	<b>92</b>	<b>1.1</b>



Figure 1 shows the percent of teenage/adult drivers and teenage/adult/child passengers by gender. There were more female drivers and passengers observed than male drivers and passengers.

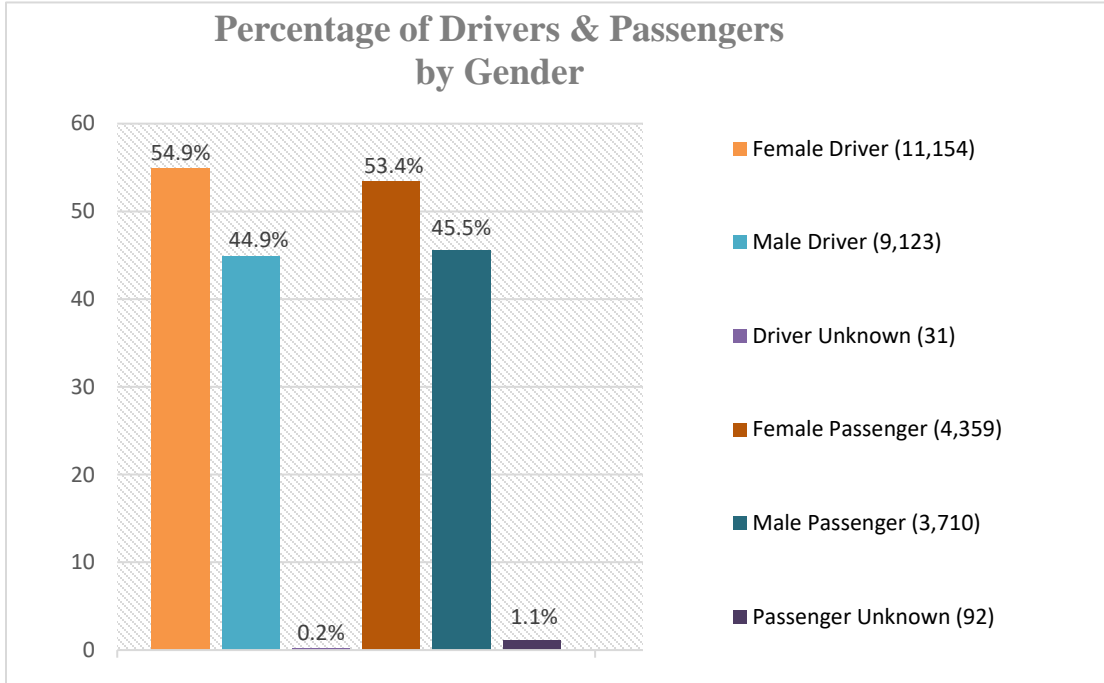


Figure 1-Percentage of Drivers and Passengers by Gender

Of the drivers (adults and teenagers) and passengers (adults, teenagers, and children) observed, White was the most frequent race with 85.7 percent of the drivers and 84.7 percent of the passengers. Asian was the least frequently observed with 0.6 for drivers and 0.7 for passengers. Table 7 presents these data.

**Table 7**  
**Frequency of Drivers and Passengers**  
**by Race**

Race	Driver		Passenger	
	Freq.	%	Freq.	%
Asian	125	0.6	52	0.7
African American	1,244	6.1	548	6.7
Hispanic/Latino	317	1.6	179	2.2
White	17,401	85.7	6,916	84.7
Other	1,221	6.0	466	5.7
<b>TOTAL</b>	<b>20,308</b>	<b>100</b>	<b>8,161</b>	<b>100</b>

Table 8 depicts the adult and teenage drivers seat belt use by race. Asian drivers had the highest seat belt use at 89.6 percent. African American drivers had the lowest use at 64.3 percent.

**Table 8**  
**Adult and Teenage Drivers**  
**Seat Belt Use by Race**

RACE	Restrained		Non-Restrained	
	Freq.	%	Freq.	%
Asian	112	89.6	13	10.4
African American	800	64.3	444	35.7
Hispanic/Latino	247	77.9	70	22.1
White	12,833	73.8	4,568	26.2
Unknown	984	80.6	237	19.4
<b>TOTAL</b>	<b>14,976</b>	<b>73.7</b>	<b>5,332</b>	<b>26.3</b>

Seat belt use for both drivers and passengers was low at 73.7 and 75.4 percent, respectively. Data in Table 9 includes all adult and teenager drivers and adult, teenage, and child front seat outboard passengers.

**Table 9**  
**Frequency of Drivers and Passengers**  
**Seat Belt Use**

Seat Belt Status	Driver		Passenger	
	Freq.	%	Freq.	%
Belted	14,976	73.7	6,152	75.4
Not Belted	5,332	26.3	2,009	24.6
<b>TOTAL</b>	<b>20,308</b>	<b>100</b>	<b>8,161</b>	<b>100</b>

Of the 20,308 vehicles observed, there were 842 vehicles with one additional passenger, 196 with two additional passengers, and 38 with three additional passengers. These passengers are in addition to the front seat outboard passengers which were counted separately.

Displayed in Table 10 is the seat belt use of all drivers by MoDOT District. The SL District observed the highest driver seat belt usage at 81.2 percent, whereas the SE District had the lowest observed driver seat belt usage at 59.8 percent.

**Table 10  
Driver Seat Belt Use  
by MoDOT District**

MoDOT	Drivers Restrained		Drivers Non-Restrained	
	Freq.	%	Freq.	%
NW	1,993	68.2	929	31.8
NE	1,210	75.4	394	24.6
KC	2,383	73.3	870	26.7
C	2,264	78.6	617	21.4
SL	2,664	81.2	615	18.8
SW	2,666	79.3	697	20.7
SE	1,796	59.8	1,210	40.2
<b>TOTAL</b>	<b>14,976</b>	<b>73.7</b>	<b>5,332</b>	<b>26.3</b>

Displayed in Table 11 is the seat belt use of all passengers by MoDOT District. Passengers within the SL District had the highest observed seat belt usage at 82.9 percent. The lowest seat belt usage was observed within the SE District at 66.3 percent.

**Table 11  
Passenger Seat Belt Use  
by MoDOT District**

MoDOT	Passengers Restrained		Passengers Non-Restrained	
	Freq.	%	Freq.	%
NW	811	68.8	367	31.2
NE	514	80.6	124	19.4
KC	864	72.1	334	27.9
C	969	78.3	269	21.7
SL	872	82.9	180	17.1
SW	1,192	81.9	263	18.1
SE	930	66.3	472	33.7
<b>TOTAL</b>	<b>6,152</b>	<b>75.4</b>	<b>2,009</b>	<b>24.6</b>

Displayed in Tables 12 and 13 is the seat belt usage by adult drivers and teenage drivers by MoDOT District. Adult and teenage drivers had similar seat belt usage at 74.5 and 73.1 percent, respectively.

**Table 12  
Adult Driver Seat belt Use  
by MoDOT District**

MoDOT	2024 Restrained		2024 Non- Restrained	
	Freq.	%	Freq.	%
NW	1,138	72.9	423	27.1
NE	510	75.6	165	24.4
KC	1,093	73.6	392	24.6
C	1,197	79.1	317	20.9
SL	1,054	80.5	256	19.5
SW	1,165	79.6	299	20.4
SE	838	61.0	537	39.0
<b>TOTAL</b>	<b>6,995</b>	<b>74.5</b>	<b>2389</b>	<b>25.5</b>

**Table 13  
Teenage Driver Seat belt Use  
By MoDOT District**

MoDOT	2024 Restrained		2024 Non- Restrained	
	Freq.	%	Freq.	%
NW	855	62.8	506	37.2
NE	700	75.4	299	24.6
KC	1,287	73.0	475	27.0
C	1,066	78.2	298	21.8
SL	1,608	81.8	359	18.2
SW	1,495	79.0	397	21.0
SE	954	58.7	672	41.3
<b>TOTAL</b>	<b>7,965</b>	<b>73.1</b>	<b>2,936</b>	<b>26.9</b>

Table 14 shows driver seat belt use by vehicle type by MoDOT District. Drivers of vans had an overall high of 81.3 percent seat belt use, while those drivers observed driving trucks had the overall lowest belt use at 58.6 percent.

**Table 14  
Adult and Teenage Driver Seat belt Use by  
Vehicle Type by MoDOT District**

MoDOT	Car				SUV				Truck				Van			
	Restrained		Non-Restrained		Restrained		Non-Restrained		Restrained		Non-Restrained		Restrained		Non-Restrained	
	Freq.	%	Freq.	%	Freq.	%	Freq.	%	Freq.	%	Freq.	%	Freq.	%	Freq.	%
NW	590	64.3	328	35.7	975	79.1	257	20.9	303	49.4	310	50.6	125	78.6	34	21.4
NE	392	76.4	121	23.6	535	80.8	127	19.2	215	62.7	128	37.3	68	79.1	18	20.9
KC	950	74.7	321	25.3	1,012	74.5	346	25.5	303	63.8	172	36.2	118	79.2	31	20.8
C	737	81.5	167	18.5	1,022	84.1	193	15.9	367	62.0	225	38.0	138	81.2	32	18.8
SL	1,109	79.0	295	21.0	1,159	85.4	199	14.6	259	71.9	101	28.1	137	87.3	20	12.7
SW	990	81.4	226	18.6	1,060	83.5	209	16.5	471	66.3	239	33.7	145	86.3	23	13.7
SE	572	62.0	351	38.0	701	64.9	379	35.1	357	45.3	432	54.7	166	77.6	48	22.4
<b>TOTAL</b>	<b>5,340</b>	<b>74.7</b>	<b>1,809</b>	<b>25.3</b>	<b>6,464</b>	<b>79.1</b>	<b>1,710</b>	<b>20.9</b>	<b>2,275</b>	<b>58.6</b>	<b>1,607</b>	<b>41.4</b>	<b>897</b>	<b>81.3</b>	<b>206</b>	<b>18.7</b>

Eighty-one percent of the adult drivers in vans were restrained, whereas only 61.8 percent of the adult drivers were restrained in trucks. Table 15 shows adult driver seat belt use by vehicle type by MoDOT District.

**Table 15  
Adult Driver Seat belt Use  
by Vehicle Type by MoDOT District**

MoDOT	Car				SUV				Truck				Van			
	Restrained		Non-Restrained		Restrained		Non-Restrained		Restrained		Non-Restrained		Restrained		Non-Restrained	
	Freq.	%	Freq.	%	Freq.	%	Freq.	%	Freq.	%	Freq.	%	Freq.	%	Freq.	%
NW	191	62.6	114	37.4	650	81.2	151	18.8	181	58.0	131	42.0	116	81.1	27	18.9
NE	91	71.7	36	28.3	278	79.9	70	20.1	86	66.2	44	33.8	55	78.6	15	21.4
KC	282	73.3	103	26.7	577	75.0	192	25.0	140	66.0	72	34.0	94	79.0	25	21.0
C	226	77.1	67	22.9	656	84.2	123	15.8	196	66.7	98	33.3	119	80.4	29	19.6
SL	310	75.2	102	24.8	539	84.9	96	15.1	102	71.3	41	28.7	103	85.8	17	14.2
SW	270	79.0	72	21.0	577	84.0	110	16.0	209	67.4	101	32.6	109	87.2	16	12.8
SE	182	63.6	104	36.4	348	62.4	210	37.6	162	47.5	179	52.5	146	76.8	44	23.2
<b>TOTAL</b>	<b>1,552</b>	<b>72.2</b>	<b>598</b>	<b>27.8</b>	<b>3,625</b>	<b>79.2</b>	<b>952</b>	<b>20.8</b>	<b>1,076</b>	<b>61.8</b>	<b>666</b>	<b>38.2</b>	<b>742</b>	<b>81.1</b>	<b>173</b>	<b>18.9</b>

Table 16 shows the teenage driver seat belt use by vehicle type by MoDOT District. No matter the category, adult/teenage drivers combined, adult drivers only or teenage drivers only, drivers of Vans had the highest usage rate with drivers of trucks having the lowest. Overall, seat belt use for teenage drivers by vehicle type was 75.8 percent in Cars, 78.9 percent in Sport Utility Vehicles, 56.1 percent in Trucks and 82.2 percent in Vans.

**Table 16**  
**Teenage Driver Seat belt Use**  
**by Vehicle Type by MoDOT District**

MoDOT	Car				SUV				Truck				Van			
	Restrained		Non-Restrained		Restrained		Non-Restrained		Restrained		Non-Restrained		Restrained		Non-Restrained	
	Freq.	%	Freq.	%	Freq.	%	Freq.	%	Freq.	%	Freq.	%	Freq.	%	Freq.	%
NW	399	65.1	214	34.9	325	75.4	106	24.6	122	40.5	179	59.5	9	56.3	7	43.7
NE	301	78.0	85	22.0	257	81.9	57	18.1	129	60.6	84	39.4	13	81.3	3	18.8
KC	667	75.5	216	24.5	433	73.8	154	26.2	163	62.2	99	37.8	24	80.0	6	20.0
C	511	83.6	100	16.4	365	83.9	70	16.1	171	57.8	125	42.2	19	86.4	3	13.6
SL	798	80.5	193	19.5	620	85.8	103	14.2	156	72.2	60	27.8	34	91.9	3	8.1
SW	719	82.5	153	17.6	479	82.9	99	17.1	262	65.5	138	34.5	35	83.3	7	16.7
SE	390	61.2	247	38.8	351	67.5	169	32.5	195	43.6	252	56.4	18	81.8	4	18.2
<b>TOTAL</b>	<b>3,785</b>	<b>75.8</b>	<b>1,208</b>	<b>24.2</b>	<b>2,830</b>	<b>78.9</b>	<b>758</b>	<b>21.1</b>	<b>1,198</b>	<b>56.1</b>	<b>937</b>	<b>43.9</b>	<b>152</b>	<b>82.2</b>	<b>33</b>	<b>17.8</b>

There were two classifications of drivers (adult/teenager) and three classifications for front seat outboard passengers (adult/teenager/child) observed. Seat belt usage of drivers and passengers by classification and gender are reflected in Table 17 and 18. Teen and adult female drivers had the highest seat belt use at 79.4 and 79.7 percent, respectively. Teen and adult male drivers had similar seat belt usage at 66.4 and 67.2 percent, respectively.

**Table 17**  
**Driver Seat belt Use**  
**by Classification and Gender**

Drivers	Teenager				Adult				Unknown			
	Restrained		Non-Restrained		Restrained		Non-Restrained		Restrained		Non-Restrained	
	Freq.	%	Freq.	%	Freq.	%	Freq.	%	Freq.	%	Freq.	%
Male	3,520	66.4	1,781	33.6	2,558	67.2	1,250	32.8	9	64.3	5	35.7
Female	4,439	79.4	1,150	20.6	4,427	79.7	1,130	20.3	6	75.0	2	25.0
Unknown	6	54.6	5	45.4	10	52.6	9	47.4	1	100.0	0	0
<b>TOTAL</b>	<b>7,965</b>	<b>73.1</b>	<b>2,936</b>	<b>26.9</b>	<b>6,995</b>	<b>74.5</b>	<b>2,389</b>	<b>25.5</b>	<b>16</b>	<b>69.6</b>	<b>7</b>	<b>30.4</b>

Seat belt usage of passengers by classification and gender is reflected in Table 18.

**Table 18**  
**Passenger Seat belt Use by**  
**Classification and Gender**

Drivers	Teenager				Adult				Child			
	Restrained		Non-Restrained		Restrained		Non-Restrained		Restrained		Non-Restrained	
	Freq.	%	Freq.	%	Freq.	%	Freq.	%	Freq.	%	Freq.	%
Male	2,403	71.5	956	28.5	72	64.9	39	35.1	171	74.4	59	25.6
Female	3,148	78.6	859	21.4	125	78.1	35	21.9	150	82.9	31	17.1
Unknown	33	73.3	12	26.7	2	50.0	2	50.0	3	100.0	0	0
<b>TOTAL</b>	<b>5,584</b>	<b>75.4</b>	<b>1,827</b>	<b>24.6</b>	<b>199</b>	<b>72.4</b>	<b>76</b>	<b>27.6</b>	<b>324</b>	<b>78.3</b>	<b>90</b>	<b>21.7</b>

Overall, female teenage drivers were belted more frequently at 79.4 percent than male drivers at only 66.4 percent. Male teenage driver seat belt usage ranges from a high of 76.5 percent in the SL District to a low of 47.0 percent in the SE District. Female driver seat belt use ranges from a high of 86.5 percent in the SL District to a low of 68.9 percent in the SE District. Table 19 presents the teenage driver seat belt use by gender by MoDOT District.

**Table 19**  
**Teenage Driver Seat belt Use by**  
**Gender by MoDOT District**

MoDOT	Male				Female			
	Restrained		Non-Restrained		Restrained		Non-Restrained	
	Freq.	%	Freq.	%	Freq.	%	Freq.	%
NW	364	52.9	324	47.1	490	73.1	180	26.9
NE	287	66.6	144	33.4	412	82.9	85	17.1
KC	659	70.3	278	29.7	625	76.2	195	23.8
C	487	72.2	188	27.8	579	84.0	110	16.0
SL	715	76.5	220	23.5	893	86.5	139	13.5
SW	653	74.3	226	25.7	841	83.1	171	16.9
SE	355	47.0	401	53.0	599	68.9	270	31.1
<b>TOTAL</b>	<b>3,520</b>	<b>66.4</b>	<b>1,781</b>	<b>33.6</b>	<b>4,439</b>	<b>79.4</b>	<b>1,150</b>	<b>20.6</b>

Table 20 shows seat belt use when the driver was an adult and the passenger a teenager. Seat belt use for teenage drivers with adult passengers is depicted in Table 21. Teenage drivers with teenage passengers seat belt use is presented in Table 22.

When an adult driver had a front seat outboard teenage passenger, overall seat belt use by the teenage passenger was higher than the adults seat belt use rate, 77.2 and 74.7 percent, respectively. Table 20 depicts these findings.

**Table 20**  
**Adult Driver Seat belt Use**  
**and Teenage Passenger Seat belt Use by**  
**MoDOT District**

MoDOT	Adult Driver				Teenage Passenger			
	Restrained		Non-Restrained		Restrained		Non-Restrained	
	Freq.	%	Freq.	%	Freq.	%	Freq.	%
NW	423	72.6	160	27.4	437	75.0	146	25.0
NE	251	74.3	87	25.7	282	83.4	56	16.6
KC	484	74.4	167	25.6	464	71.3	187	28.7
C	550	78.6	150	21.4	569	81.3	131	18.7
SL	406	81.9	90	18.1	421	84.9	75	15.1
SW	622	82.3	134	17.7	630	83.3	126	16.7
SE	510	61.9	314	38.1	553	67.1	271	32.9
<b>TOTAL</b>	<b>3,246</b>	<b>74.7</b>	<b>1,102</b>	<b>25.3</b>	<b>3,356</b>	<b>77.2</b>	<b>992</b>	<b>22.8</b>

In those cases where a teenage driver had an adult front seat outboard passenger, the overall seat belt use was the same. Table 21 shows these data.

**Table 21**  
**Teenage Driver Seat belt Use and**  
**Adult Passenger Seat belt Use**  
**by MoDOT District**

MoDOT	Teenage Driver				Adult Passenger			
	Restrained		Non-Restrained		Restrained		Non-Restrained	
	Freq.	%	Freq.	%	Freq.	%	Freq.	%
NW	8	100.0	0	0.0	8	100.0	0	0.0
NE	2	100.0	0	0.0	2	100.0	0	0.0
KC	7	77.8	2	22.2	6	66.7	3	33.3
C	7	87.5	1	12.5	7	87.5	1	12.5
SL	6	100.0	0	0.0	6	100.0	0	0.0
SW	26	92.9	2	7.1	26	92.9	2	7.1
SE	4	80.0	1	20.0	5	100.0	0	0.0
<b>TOTAL</b>	<b>60</b>	<b>90.9</b>	<b>6</b>	<b>9.1</b>	<b>60</b>	<b>90.9</b>	<b>6</b>	<b>9.1</b>



With an adult driver/teenage passenger or teenage driver/adult passenger the teenager seat belt use rate was 77.2 and 90.9 percent, respectively. When there is a teenage driver and teenage front seat outboard passenger, the use rate is 72.8 percent for both the driver and passenger. The teenage driver and teenage passenger seat belt use by MoDOT District is displayed in Table 22.

**Table 22**  
**Teenage Driver Seat belt Use**  
**and Teenage Passenger Seat belt Use by MoDOT District**

MoDOT	Teenage Driver				Teenage Passenger			
	Restrained		Non-Restrained		Restrained		Non-Restrained	
	Freq.	%	Freq.	%	Freq.	%	Freq.	%
NW	239	61.0	153	39.0	228	58.2	164	41.8
NE	212	76.0	67	24.0	216	77.4	63	22.6
KC	332	72.7	125	27.3	327	71.6	130	28.4
C	309	76.1	97	23.9	306	75.4	100	24.6
SL	417	79.4	108	20.6	425	81.0	100	19.0
SW	454	81.1	106	18.9	446	79.6	114	20.4
SE	261	59.9	175	40.1	276	63.3	160	36.7
<b>TOTAL</b>	<b>2,224</b>	<b>72.8</b>	<b>831</b>	<b>27.2</b>	<b>2,224</b>	<b>72.8</b>	<b>831</b>	<b>27.2</b>

When the driver was a female teenager, the teenage passenger was restrained at 76.5 percent, whereas the teenage passenger with a male teenage driver were only restrained at 68.8 percent. The seat belt use is 10 percent lower for the driver when the driver is a teenage male (67.7%) as compared to a teenage female (77.7%) when there is a teenage front seat outboard passenger in the vehicle. The seat belt use for the female and male teenage drivers with teenage front seat outboard passengers is shown in Tables 23 and 24.

**Table 23**  
**Female Teenage Driver Seat belt Use**  
**and Teenage Passenger Seat belt Use by MoDOT District**

MoDOT	Female Teenage Driver				Teenage Passenger			
	Restrained		Non-Restrained		Restrained		Non-Restrained	
	Freq.	%	Freq.	%	Freq.	%	Freq.	%
NW	136	66.7	68	33.3	127	62.3	77	37.7
NE	107	77.0	32	23.0	106	76.3	33	23.7
KC	177	78.7	48	21.3	167	74.2	58	25.8
C	165	80.9	39	19.1	170	83.3	34	16.7
SL	215	86.4	34	13.6	216	86.8	33	13.2
SW	261	82.6	55	17.4	256	81.0	60	19.0
SE	163	68.2	76	31.8	163	68.2	76	31.8
<b>TOTAL</b>	<b>1,224</b>	<b>77.7</b>	<b>352</b>	<b>22.3</b>	<b>1,205</b>	<b>76.5</b>	<b>371</b>	<b>23.5</b>

**Table 24**  
**Male Teenage Driver Seat belt Use**  
**by Teenage Passenger Seat belt Use by MoDOT District**

MoDOT	Male Teenage Driver				Teenage Passenger			
	Restrained		Non-Restrained		Restrained		Non-Restrained	
	Freq.	%	Freq.	%	Freq.	%	Freq.	%
NW	103	55.1	84	44.9	100	53.5	87	46.5
NE	105	75.0	35	25.0	110	78.6	30	21.4
KC	153	67.1	75	32.9	156	68.4	72	31.6
C	144	71.3	58	28.7	136	67.3	66	32.7
SL	202	73.2	74	26.8	209	75.7	67	24.3
SW	192	79.0	51	21.0	189	77.8	54	22.2
SE	98	49.8	99	50.2	113	57.4	84	42.6
<b>TOTAL</b>	<b>997</b>	<b>67.7</b>	<b>476</b>	<b>32.3</b>	<b>1,013</b>	<b>68.8</b>	<b>460</b>	<b>31.2</b>

The number of passengers in addition to the front seat outboard passenger was recorded. Table 25 presents the teenage driver seat belt use by the additional number of passengers.

**Table 25**  
**Teenage Driver Seat belt Use by**  
**Number of Additional Passenger**

Number of Passengers	Driver Restrained		Driver Non-Restrained	
	Freq.	%	Freq.	%
1	163	64.9	88	35.1
2	37	75.5	12	24.5
3	4	100.0	0	0.0

When all the teenager drivers and front seat outboard passengers are combined, seat belt use is 74.0 percent. The seat belt use for all teenage drivers and front seat outboard passengers was the lowest within the NW and SE Districts. Table 26 presents the teenage drivers and passengers combined seat belt use by MoDOT District

**Table 26**  
**Teenage Driver and Passenger Combined Seat belt Use**  
**By MoDOT District**

MoDOT	2024 Restrained		2024 Non-Restrained	
	Freq.	%	Freq.	%
NW	1,520	65.1	816	34.9
NE	1,198	77.5	348	22.5
KC	2,078	72.4	793	27.6
C	1,942	78.5	531	21.5
SL	2,454	82.1	534	17.9
SW	2,574	80.2	637	19.8
SE	1,783	61.8	1,104	38.2
<b>TOTAL</b>	<b>13,549</b>	<b>74.0</b>	<b>4,763</b>	<b>26.0</b>

# Attachment A

List of High Schools by MoDOT District

## High School by MoDOT District

	<b>NW District</b>	<b>Northwest Area</b>					
	<b>County</b>	<b>High School Name</b>	<b>Address</b>	<b>City</b>	<b>Zip</b>	<b>Grades</b>	<b># HS Students</b>
NW-01	Buchanan	Central High	2602 Edmond	St Joseph	64501	9-12	1,707
NW-02	Buchanan	Benton High	5655 S Fourth	St Joseph	64504	9-12	710
NW-03	Buchanan	Lafayette High	412 Highland Ave	St Joseph	64505	9-12	777
NW-04	Mercer	Princeton R-V	1008 E. Coleman	Princeton	64673	7-12	173
NW-05	Nodaway	Maryville High	1503 S Munn Ave	Maryville	64468	9-12	474
NW-06	Clinton	Cameron High	1022 S Chestnut	Cameron	64429	9-12	524
NW-07	Harrison	South Harrison High	3400 Bulldog Ave	Bethany	64424	7-12	264
NW-08	Atchison	Rock Port High	600 S Nebraska St.	Rock Port	64482	7-12	153
NW-09	Atchison	Tarkio High	312 S 11 <sup>th</sup> Street	Tarkio	64491	6-12	173
NW-10	Daviess	Gallatin High	602 S Olive	Gallatin	64640	9-12	175
NW-11	Clinton	Lathrop High	612 Center	Lathrop	64465	9-12	315
NW-12	Clinton	Plattsburg High	800 Frost St	Plattsburg	64477	9-12	183
NW-13	Caldwell	Penney High	903 N Davis	Hamilton	64644	9-12	191
NW-14	Livingston	Chillicothe High	2801 Hornet Rd	Chillicothe	64601	9-12	611
NW-15	Grundy	Trenton Sr. High	1415 Oklahoma Ave	Trenton	64683	9-12	339
NW-16	Linn	Brookfield High	124 Pershing Rd	Brookfield	64628	9-12	296
NW-17	Chariton	Salisbury High	1000 S Maple Ave	Salisbury	65281	7-12	233
NW-18	Sullivan	Milan High	373 S Market St	Milan	63556	7-12	299
NW-19	Carroll	Carrollton Senior High	300 E Ninth St	Carrollton	64633	9-12	232
NW-20	Linn	Marceline High	314 E Santa Fe	Marceline	64658	9-12	200

	<b>NE District</b>	<b>Northeast Area</b>					
	<b>County</b>	<b>High School Name</b>	<b>Address</b>	<b>City</b>	<b>Zip</b>	<b>Grades</b>	<b># HS Students</b>
NE-01	Lincoln	Ellsberry High	138 Tomahawk Drive	Ellsberry	63343	9-12	233
NE-02	Lincoln	Silex High	64 Highway UU	Silex	63377	7-12	210
NE-03	Warren	Warrenton High	803 Pinckney	Warrenton	63383	9-12	954
NE-04	Warren	Wright City High	520 Westwoods Road	Wright City	63390	9-12	494
NE-05	Pike	Louisiana High	3321 W Georgia St.	Louisiana	63353	9-12	225
NE-06	Pike	Bowling Green High	700 W Adams	Bowling Green	63334	K-12	409
NE-07	Lewis	Highland Jr.-Sr. High	21504 State Highway 6	Lewistown	63452	7-12	408
NE-08	Marion	Palmyra High	1703 S Main St	Palmyra	63461	9-12	361
NE-09	Clark	Clark Co. High	680 E Main	Kahoka	63445	9-12	301
NE-10	Ralls	Mark Twain Sr. High	21622 Highway 19	Center	63436	9-12	245
NE-11	Randolph	Moberly Sr. High	1625 Gratz Brown Rd	Moberly	65270	9-12	752
NE-12	Randolph	Northeast High	301 W. Martin	Cairo	65239	6-12	213

	<b>KC District</b>	<b>Kansas City Area</b>					
	<b>County</b>	<b>High School Name</b>	<b>Address</b>	<b>City</b>	<b>Zip</b>	<b>Grades</b>	<b># HS Students</b>
KC-01	Clay	Excelsior Springs High	612 Tiger Drive	Excelsior Springs	64024	9-12	765
KC-02	Clay	Staley High	2800 N.E. Shoal Creek Pkwy	Kansas City	64156	9-12	1,787
KC-03	Clay	Kearney High	715 E 19 <sup>th</sup> St.	Kearney	64118	10-12	838
KC-04	Jackson	Truman High	3301 S Noland Rd	Independence	64055	9-12	1,570
KC-05	Jackson	Blue Springs High	2000 NW Ashton Dr	Blue Springs	64015	9-12	2,427
KC-06	Jackson	Grain Valley High	551 S.W. Eagles Pkwy	Grain Valley	64029	9-12	1,410
KC-07	Jackson	Center Sr. High	8715 Holmes	Kansas City	64131	9-12	692
KC-08	Jackson	William Chrisman High	1223 N Noland Rd	Independence	64050	9-12	1,470
KC-09	Jackson	University Academy-Upper	6801 Holmes Rd.	Kansas City	64131	9-12	227
KC-10	Jackson	Lone Jack High	313 S Bynum Rd	Lone Jack	64070	6-12	385
KC-11	Platte	Park Hill High	7701 NW Barry Rd	Kansas City	64153	9-12	1,909
KC-12	Platte	West Platte High	1103 Washington St	Weston	64098	9-12	298
KC-13	Jackson	Raytown South Sr. High	8211 Sterling Ave	Raytown	64138	9-12	1,176
KC-14	Jackson	Central High	3221 Indiana	Kansas City	64128	9-12	516
KC-15	Cass	Belton High	801 W. North Ave	Belton	64012	9-12	1,447
KC-16	Jackson	Lee's Summit West High	2600 SW Ward Road	Lee's Summit	64082	9-12	2,125
KC-17	Jackson	East High School	1924 Van Brunt Blvd	Kansas City	64127	9-12	983
KC-18	Lafayette	Odessa High	713 S Third St	Odessa	64076	9-12	608
KC-19	Jackson	Ruskin High School	7000 E 111 <sup>th</sup> St	Kansas City	64138	9-12	122
KC--20	Johnson	Warrensburg High	1411 S Ridgeview Dr	Warrensburg	64093	9-12	977
KC-21	Johnson	Holden High	1901 S Main	Holden	64040	9-12	363
KC-22	Johnson	Knob Noster High	504 S Washington	Knob Noster	65336	9-12	410
KC-23	Cass	Archie High	302 W State Rt A	Archie	64725	6-12	282
KC-24	Pettis	Smithton High	505 S Myrtle	Smithton	65350	7-12	260

	<b>C District</b>	<b>Central Area</b>					
	<b>County</b>	<b>High School Name</b>	<b>Address</b>	<b>City</b>	<b>Zip</b>	<b>Grades</b>	<b># HS Students</b>
C-01	Boone	David H. Hickman High	1104 N Providence Rd	Columbia	65203	9-12	1,920
C-02	Cole	Jefferson City High	609 Union St	Jefferson City	65101	9-12	1,548
C-03	Camden	Stoutland High	7584 State Rd T	Stoutland	65567	7-12	202
C-04	Camden	Camdenton High	662 Laker Pride Rd	Camdenton	65020	9-12	1,346
C-05	Cole	Capital City High	1650 Cavalier Dr	Jefferson City	65109	9-12	1,084
C-06	Pulaski	Dixon High	300 E. High School Dr	Dixon	65459	9-12	257
C-07	Laclede	Conway High	726 W Jefferson Ave	Conway	65632	7-12	366
C-08	Maries	Belle High	504 3 <sup>rd</sup> St	Belle	65013	9-12	230
C-09	Boone	Hallsville High	421 Highway 124 E	Hallsville	65255	9-12	407
C-10	Miller	Osage High	646 Hwy 42	Osage Beach	65065	9-12	646
C-11	Osage	Fatima High	143 E Main	Westphalia	65085	7-12	520
C-12	Moniteau	California High	1501 W Buchanan St	California	65018	9-12	425
C-13	Callaway	North Callaway High	2700 Thunderbird Dr	Kingdom City	65262	9-12	357
C-14	Pulaski	Laquey R-V High	27600 Highway AA	Laquey	65534	7-12	290
C-15	Morgan	Morgan Co. R-I High	701 N. Oak St	Stover	65078	7-12	328
C-16	Crawford	Steelville High	17154 Highway 19	Steelville	65565	9-12	302
C-17	Phelps	St. James High	101 E Scioto	St James	65559	9-12	619
C-18	Dent	Salem Sr. High	1400 Tiger Pride Dr	Salem	65560	9-12	555

	<b>SL District</b>	<b>St. Louis Metro Area</b>					
	<b>County</b>	<b>High School Name</b>	<b>Address</b>	<b>City</b>	<b>Zip</b>	<b>Grades</b>	<b># HS Students</b>
SL-01	Jefferson	Hillsboro High	123 Leon Hall Pkwy	Hillsboro	63050	9-12	1,125
SL-02	Jefferson	Desoto Sr. High	815 Amvets Dr.	Desoto	63020	9-12	860
SL-03	Jefferson	Northwest High	6005 Cedar Hill Rd	Cedar Hill	63016	9-12	1,860
SL-04	St. Charles	Francis Howell Central High	5199 Hwy N	St Charles	63304	9-12	1,811
SL-05	St. Charles	Ft. Zumwalt South High	8050 Mexico Rd	St Peters	63376	9-12	1,373
SL-06	St. Louis	Oakville Sr. High	5557 Milburn Rd	St Louis	63129	9-12	1,686
SL-07	St. Charles	Ft. Zumwalt West High	1251 Turtle Creek Dr	O'Fallon	63366	9-12	1,906
SL-08	St. Charles	Ft. Zumwalt East High	600 1 <sup>st</sup> Executive Ave	St. Peters	63376	9-12	1,258
SL-09	St. Charles	Liberty High	2275 Sommers Rd	Lake St. Louis	63367	9-12	1,481
SL-10	St. Louis	Clayton High	#1 Mark Twain Circle	Clayton	63015	9-12	916
SL-11	St. Louis	Valley Park St. High	1 Main St	Valley Park	63088	9-12	263
SL-12	St. Louis City	Metro High	4015 McPherson Ave	St Louis	63108	9-12	373
SL--13	St. Louis	Summer High	4248 Cottage Ave	St Louis	63113	9-12	215
SL-14	St. Louis City	Roosevelt High	3230 Hartford St	St Louis	63118	9-12	433
SL-15	St. Louis	Riverview Gardens Sr. High	1218 Shepley Dr.	St Louis	63137	9-12	1,175
SL-16	St. Louis	Jennings Sr. High	8850 Cozens	Jennings	63136	9-12	703
SL-17	St. Louis	Lindbergh Sr. High	4900 S Lindbergh	St Louis	63126	9-12	2,205
SL-18	St. Louis	Bayless Sr. High	4532 Weber Rd	St Louis	63123	9-12	520
SL-19	St. Louis	Normandy High	6701 St. Charles Rock Rd.	St. Louis	63133	9-12	595
SL-20	St. Louis	Maplewood – Richmond Heights High	7539 Manchester Rd.	Maplewood	63143	9-12	393
SL-21	St. Louis	Ritenour Sr. High	9100 St Charles Rock Rd	St Louis	63114	9-12	1,836
SL-22	Jefferson	Jefferson High	7 Blue Jay Way	Festus	63028	9-12	319
SL-23	Franklin	Union High	1217 West Main	Union	63084	9-12	1,021
SL-24	Franklin	Sullivan Sr. High	1073 E Vine St	Sullivan	63080	9-12	708

	<b>SW District</b>	<b>Southwest Area</b>					
	<b>County</b>	<b>High School Name</b>	<b>Address</b>	<b>City</b>	<b>Zip</b>	<b>Grades</b>	<b># HS Students</b>
SW-01	Jasper	Joplin High	2104 Indiana Ave	Joplin	64802	9-12	2,217
SW-02	Jasper	Webb City High	621 N Madison	Webb City	64870	9-12	1,300
SW-03	Bates	Adrian Sr High	601 N. Houston	Adrian	64720	6-12	382
SW-04	Newton	Neosho High	511 Neosho Blvd	Neosho	64850	9-12	1,374
SW-05	Jasper	Carthage Sr. High	2600 South River	Carthage	64836	9-12	1,517
SW-06	Barry	Purdy High	201 S. Gabby Gibbons Dr	Purdy	65734	7-12	289
SW-07	Barry	Southwest High	529 W Pineville Rd	Washburn	65772	9-12	236
SW-08	Barry	Cassville High	1501 Main St	Cassville	65625	9-12	567
SW-09	Barry	Monett High	1 David Sippy Dr	Monett	65708	9-12	763
SW-10	Christian	Clever High	6800 W. Hwy 14	Clever	65631	9-12	370
SW-11	Christian	Sparta High	850 State Hwy 14E	Sparta	65753	9-12	225
SW-12	Jasper	Jasper Co. Sr. High	201 W Mercer	Jasper	64755	7-12	250
SW-13	Jasper	Sarcoxie High	101 S 17 <sup>th</sup> St	Sarcoxie	64862	6-12	443
SW-14	Henry	Henry Co. Jr & Sr High	210 North St	Windsor	65360	7-12	332
SW-15	Greene	Glendale High	2727 S Ingram Mill	Springfield	65804	9-12	1,401
SW-16	Hickory	Skyline High	20663 US-65	Urbana	65767	9-12	206
SW-17	Greene	Central High	423 E Central	Springfield	65802	6-12	1,691
SW-18	Greene	Hillcrest High	3319 N Grant	Springfield	65803	9-12	1,048
SW-19	Lawrence	Miller High	110 W 6 <sup>th</sup> St	Miller	65707	7-12	277
SW-20	Newton	Diamond High	401 S Main	Diamond	64840	9-12	231
SW-21	St. Clair	Lakeland High	12530 Lakeland School Dr	Deepwater	64740	7-12	207
SW-22	Taney	Forsyth High	178 Panther St	Forsyth	65653	9-12	399
SW-23	Taney	Branson High	935 P Road 65	Branson	65616	9-12	1,442
SW-24	Taney	Hollister High	2112 State Highway BB	Hollister	65672	9-12	477
SW-25	Dallas	Buffalo High	500 W Main	Buffalo	65622	9-12	508
SW-26	Greene	Logan-Rogersville High	300 N Missouri Blvd	Rogersville	65742	9-12	709
SW-27	Benton	Warsaw High	20363 Lane of Champions	Warsaw	65355	9-12	359



	<b>SE District</b>	<b>Southeast Area</b>					
	<b>County</b>	<b>High School Name</b>	<b>Address</b>	<b>City</b>	<b>Zip</b>	<b>Grades</b>	<b># HS Students</b>
SE-01	Butler	Poplar Bluff High	3209 Oak Grove Rd	Poplar Bluff	63901	9-12	1,487
SE-02	Butler	Neelyville High	289 Broadway St	Neelyville	63954	7-12	271
SE-03	Butler	Twin Rivers High	9261 Highway 51	Broseley	63932	9-12	266
SE-04	St. Francois	Farmington Sr. High	1 Black Knight Dr	Farmington	63640	9-12	1,224
SE-05	St. Francois	North Co. Sr. High	7151 Raider Rd	Bonne Terre	63628	9-12	877
SE-06	Perry	Perryville Sr. High	326 College St	Perryville	63775	9-12	727
SE-07	Scott	Sikeston Sr. High	200 Pine St	Sikeston	63801	9-12	992
SE-08	Ste. Genevieve	Ste. Genevieve Sr. High	715 Washington St	Ste Genevieve	63670	9-12	544
SE-09	Mississippi	Charleston High	606 S. Thorn St	Charleston	63864	9-12	260
SE-10	Mississippi	East Prairie St	308 E Walnut	East Prairie	63845	9-12	312
SE-11	Oregon	Alton High	505 School St	Alton	65606	6-2	322
SE-12	Ozark	Gainesville High	422 Bulldog Dr	Gainesville	65655	7-12	297
SE-13	Pemiscot	Hayti High	500 N 4 <sup>th</sup> St	Hayti	63851	7-12	228
SE-14	Dunklin	Malden High	505 W Burkhardt St	Malden	63863	6-12	377
SE-15	Bollinger	Woodland High	WHS RR5 Box 3210	Marble Hill	63764	9-12	236
SE-16	Stoddard	Bloomfield High	505Court St	Bloomfield	63825	9-12	207
SE-17	Stoddard	Bernie High	516 W Main	Bernie	63822	7-12	221
SE-18	Douglas	Ava High	507 NE 3 <sup>rd</sup> St	Ava	65608	9-12	449
SE-19	Carter	Van Buren High	202 W College	Van Buren	63965	7-12	241
SE-20	Texas	Summersville High	525 Rogers St	Summersville	65510	6-12	203
SE-21	Texas	Plato High	10645 Plato Dr	Plato	65552	6-12	289
SE-22	Texas	Licking High	313 S Main	Licking	65542	7-12	402
SE-23	Howell	Willow Springs High	407 N Ferguson	Willow Springs	65793	9-12	389
SE-24	Wright	Hartville High	175 S. School Ave	Hartville	65667	7-12	338
SE-25	Wright	Mansfield High	315 W Ohio St	Mansfield	65704	9-12	217

# Attachment B

Survey Instruments

**Youth (High School) Seat Belt Survey**  
**Site Summary**

Observer: \_\_\_\_\_

Date: \_\_\_\_\_

Time: Start \_\_\_\_\_ (AM) End \_\_\_\_\_ (AM)

MoDOT District:

- NW
- NE
- KC
- C
- SL
- SW
- SE

School:

- 01
- 02
- 03
- 04
- 05
- 06
- 07
- 08
- 09
- 10
- 11
- 12
- 13
- 14
- 15
- 16
- 17
- 18
- 19
- 20
- 21
- 22
- 23
- 24
- 25
- 26
- 27
- 28
- 29
- 30

Day of the Week:

- Monday
- Tuesday
- Wednesday
- Thursday
- Friday

Road Condition:

- Dry
- Wet
- Fog
- Other: \_\_\_\_\_

Observation Point (be specific): \_\_\_\_\_

---



---



---



---

Major Distraction: \_\_\_\_\_

---



---



---



---

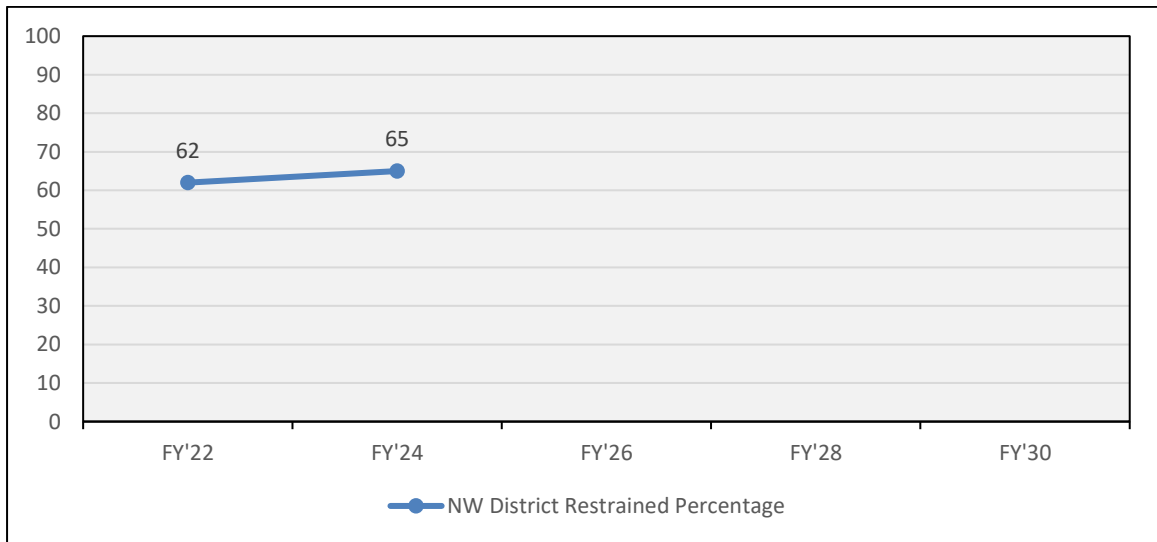


# Attachment C

Teenage Driver & Teenage Passenger Combined Seat  
Belt Use by District by School

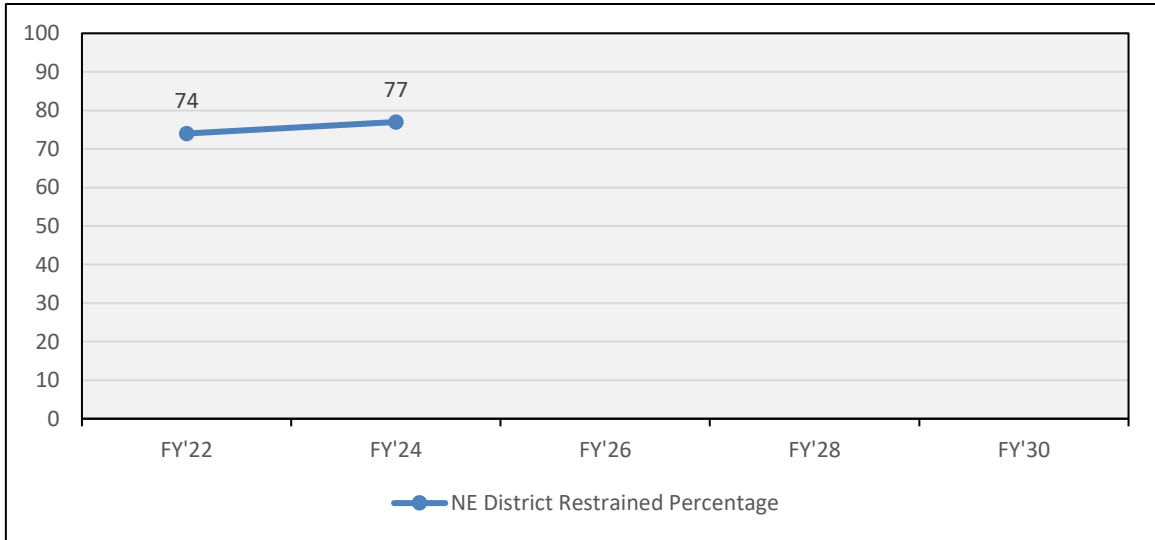
NW District High Schools  
Teenage Drivers & Teenage Passengers Combined

Northwest District (NW)			Teenage Drivers & Teenage Passengers						
Site #'s	County	High School Name Sites 01 - 21)	% Restrained by Year						
			'22	'24	'26	'28	'30	'32	'34
NW-01	Buchanan	Central High	66%	73%					
NW-02	Buchanan	Benton High	60%	69%					
NW-03	Buchanan	Lafayette High	61%	52%					
NW-04	Mercer	Princeton R-V Jr-Sr High	71%	63%					
NW-05	Nodaway	Maryville High	69%	82%					
NW-06	Clinton	Cameron High	56%	62%					
NW-07	Harrison	South Harrison High	55%	64%					
NW-08	Atchison	Rock Port High	51%	57%					
NW-09	Atchison	Tarkio High	57%	53%					
NW-10	Daviess	Gallatin High	42%	54%					
NW-11	Clinton	Lathrop High	55%	66%					
NW-12	Clinton	Plattsburg High	50%	62%					
NW-13	Caldwell	Penney High	67%	73%					
NW-14	Livingston	Chillicothe High	66%	63%					
NW-15	Grundy	Trenton Sr. High	68%	66%					
NW-16	Linn	Brookfield High	77%	62%					
NW-17	Chariton	Salisbury High	49%	57%					
NW-18	Sullivan	Milan High	83%	50%					
NW-19	Carroll	Carrollton Senior High	47%	62%					
NW-20	Linn	Marceline High	49%	55%					
		<b>ALL</b>	62%	65%					



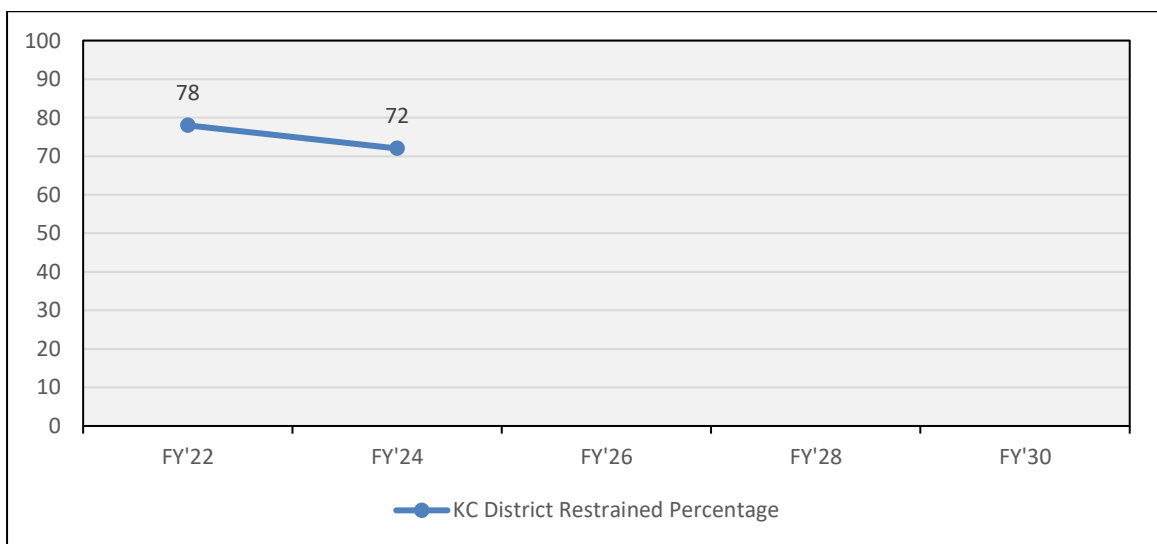
NE District High Schools  
Teenage Drivers & Teenage Passengers Combined

Northeast District (NE)			Teenage Drivers & Teenage Passengers						
Site #'s	County	High School Name (Sites 01 - 12)	% Restrained by Year						
			'22	'24	'26	'28	'30	'32	'34
NE-01	Lincoln	Elsberry High	68%	71%					
NE-02	Lincoln	Silex High	80%	62%					
NE-03	Warren	Warrenton High	70%	86%					
NE-04	Warren	Wright City High	72%	85%					
NE-05	Pike	Louisiana High	61%	64%					
NE-06	Pike	Bowling Green High	66%	51%					
NE-07	Lewis	Highland Jr.-Sr. High	85%	86%					
NE-08	Marion	Palmyra High	76%	84%					
NE-09	Clark	Clark Co. High	67%	67%					
NE-10	Ralls	Mark Twain Sr. High	81%	79%					
NE-11	Randolph	Moberly Sr. High	87%	90%					
NE-12	Randolph	Northeast High	61%	84%					
<b>ALL</b>			74%	77%					



KC District High Schools  
Teenage Drivers & Teenage Passengers Combined

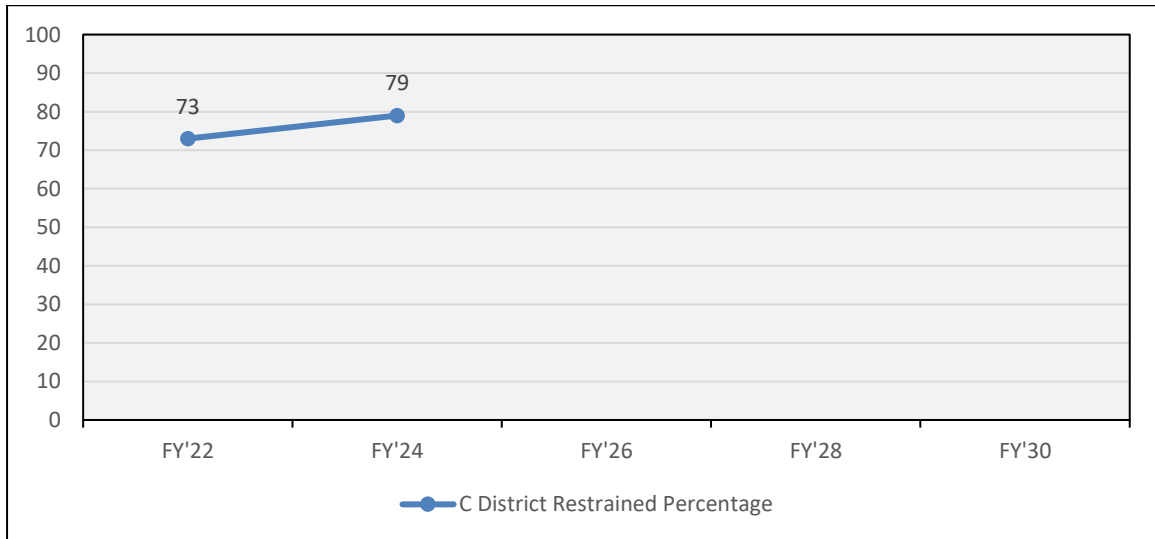
Kansas City District (KC)			Teenage Drivers & Teenage Passengers						
Site #s	County	High School Name (Sites 01 - 24)	% Restrained by Year						
			'22	'24	'26	'28	'30	'32	'34
KC-01	Clay	Excelsior Springs High	77%	56%					
KC-02	Clay	Staley High	87%	75%					
KC-03	Clay	Kearney High	85%	75%					
KC-04	Jackson	Truman High	90%	100%					
KC-05	Jackson	Blue Springs High	81%	60%					
KC-06	Jackson	Grain Valley High	87%	62%					
KC-07	Jackson	Center Sr. High	85%	72%					
KC-08	Jackson	William Chrisman High	76%	56%					
KC-09	Jackson	University-Academy Upper	84%	100%					
KC-10	Jackson	Lone Jack High	71%	58%					
KC-11	Platte	Park Hill High	91%	83%					
KC-12	Platte	West Platte High	84%	85%					
KC-13	Jackson	Raytown South Sr. High	82%	N/A					
KC-14	Jackson	Central High School	75%	59%					
KC-15	Cass	Belton High	58%	77%					
KC-16	Jackson	Lee's Summit West High	90%	88%					
KC-17	Jackson	East High School	85%	56%					
KC-18	Lafayette	Odessa High	72%	52%					
KC-19	Jackson	Ruskin High School	78%	52%					
KC-20	Johnson	Warrensburg High	70%	88%					
KC-21	Johnson	Holden High	74%	78%					
KC-22	Johnson	Knob Noster High	68%	83%					
KC-23	Cass	Archie High	82%	88%					
KC-24	Pettis	Smithton High	59%	55%					
<b>ALL</b>			78%	72%					





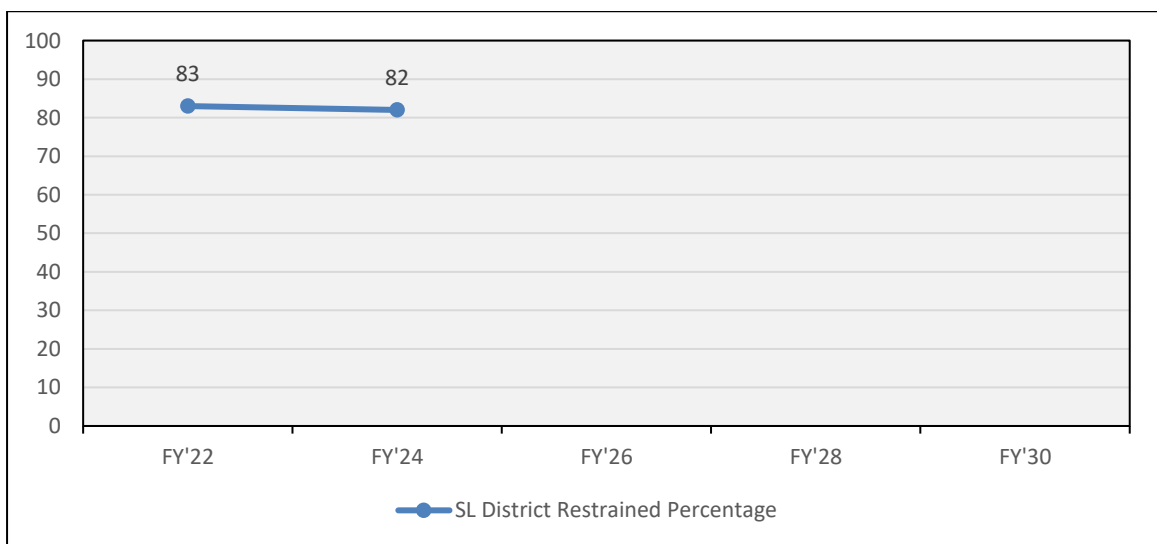
C District High Schools  
Teenage Drivers & Teenage Passengers Combined

Central District (C)			Teenage Drivers & Teenage Passengers						
Site #'s	County	High School Name (Sites 01 - 18)	% Restrained by Year						
			'22	'24	'26	'28	'30	'32	'34
C-01	Boone	David H. Hickman High	78%	97%					
C-02	Cole	Jefferson City High	86%	99%					
C-03	Camden	Stoutland High	38%	38%					
C-04	Camden	Camdenton High	78%	64%					
C-05	Cole	Capital City High School	83%	98%					
C-06	Pulaski	Dixon High	82%	65%					
C-07	Laclede	Conway High School	54%	76%					
C-08	Maries	Belle High	57%	45%					
C-09	Boone	Hallsville High	73%	97%					
C-10	Miller	Osage High	77%	85%					
C-11	Osage	Fatima High	79%	88%					
C-12	Moniteau	California High	73%	89%					
C-13	Callaway	North Callaway High	64%	84%					
C-14	Pulaski	Laquey R-V High	75%	41%					
C-15	Morgan	Morgan Co. R-I High	56%	69%					
C-16	Crawford	Steelville	65%	77%					
C-17	Phelps	St. James High	72%	61%					
C-18	Dent	Salem Sr. High	62%	61%					
		<b>ALL</b>	<b>73%</b>	<b>79%</b>					



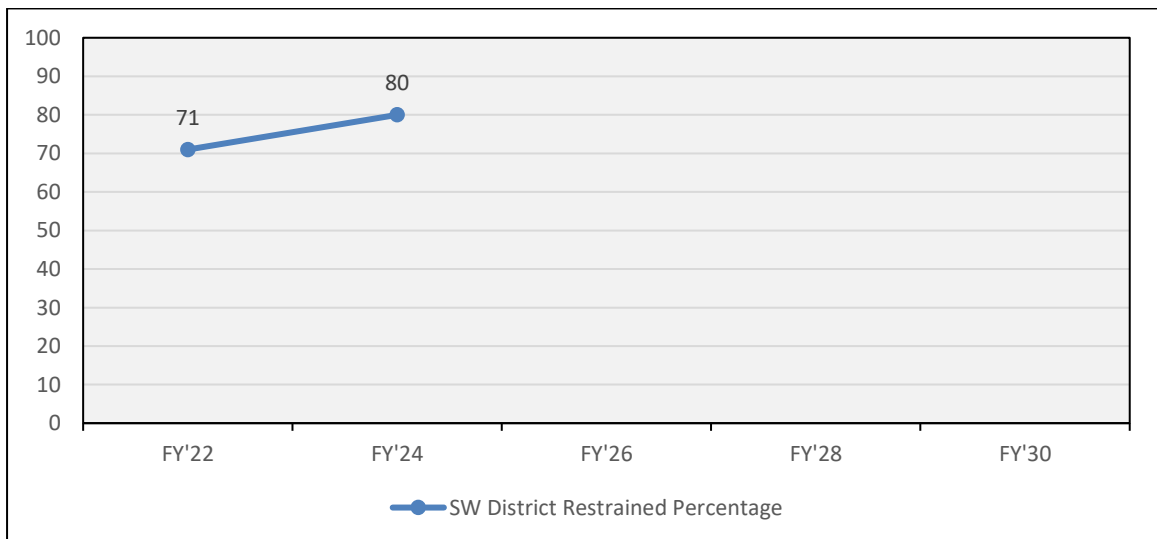
SL District High Schools  
Teenage Drivers & Teenage Passengers Combined

St. Louis District (SL)			Teenage Drivers & Teenage Passengers						
Site #'s	County	High School Name (Sites 01 - 24)	% Restrained by Year						
			'22	'24	'26	'28	'30	'32	'34
SL-01	Jefferson	Hillsboro High	82%	79%					
SL-02	Jefferson	Desoto High	81%	82%					
SL-03	Jefferson	Northwest High	84%	84%					
SL-04	St. Charles	Francis Howell Central	87%	81%					
SL-05	St. Charles	Ft. Zumwalt South High	85%	87%					
SL-06	St. Louis	Oakville Sr. High	87%	91%					
SL-07	St. Charles	Ft. Zumwalt West High	82%	75%					
SL-08	St. Charles	Ft. Zumwalt East High	77%	87%					
SL-09	St. Charles	Liberty High School	91%	92%					
SL-10	St. Louis	Clayton High	97%	91%					
SL-11	St. Louis	Valley Park Sr. High	80%	90%					
SL-12	St. Louis City	Metro High	98%	79%					
SL-13	St. Louis City	Sumner High	0%	75%					
SL-14	St. Louis City	Roosevelt High	82%	50%					
SL-15	St. Louis	Riverview Gardens Sr. High	59%	55%					
SL-16	St. Louis	Jennings Senior High	61%	61%					
SL-17	St. Louis	Lindbergh Sr. High	94%	89%					
SL-18	St. Louis	Bayless Senior High	81%	75%					
SL-19	St. Louis	Normandy High	69%	55%					
SL-20	St. Louis	Maplewood-Richmond Heights High	90%	100%					
SL-21	St. Louis	Ritenour Sr. High	54%	72%					
SL-22	Jefferson	Jefferson High School	91%	91%					
SL-23	Franklin	Union High	77%	83%					
SL-24	Franklin	Sullivan Sr. High	71%	78%					
<b>ALL</b>			83%	82%					



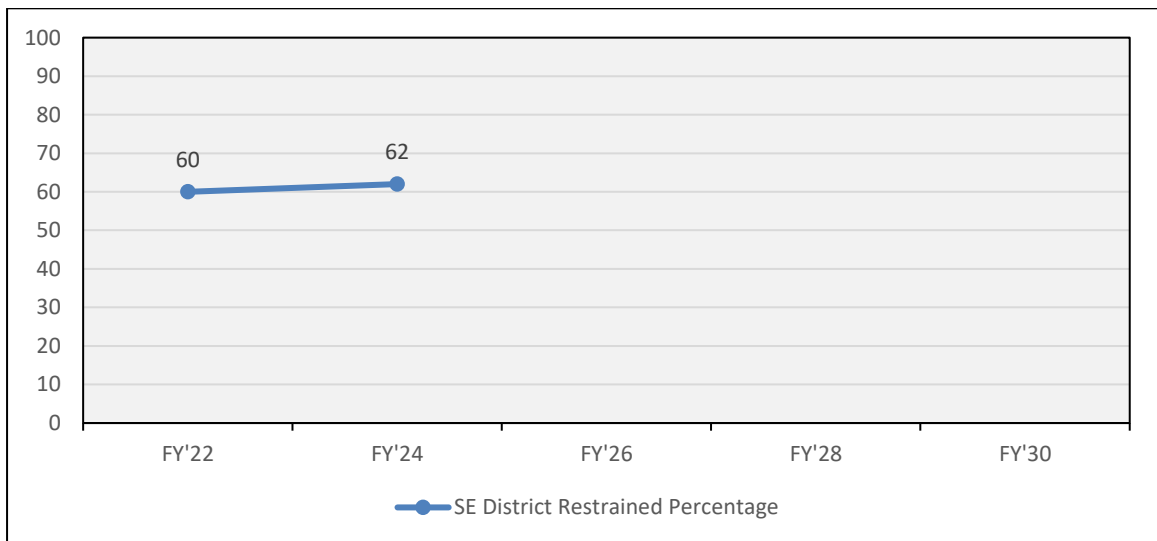
SW District High Schools  
Teenage Drivers & Teenage Passengers Combined

Southwest District (SW)			Teenage Drivers & Teenage Passengers						
Site #'s	County	High School Name (Sites 01 - 27)	% Restrained by Year						
			'22	'24	'26	'28	'30	'32	'34
SW-01	Jasper	Joplin High	91%	85%					
SW-02	Jasper	Webb City High	87%	84%					
SW-03	Bates	Adrian Sr. High	43%	72%					
SW-04	Newton	Neosho High	83%	85%					
SW-05	Jasper	Carthage High	92%	86%					
SW-06	Barry	Purdy High	41%	65%					
SW-07	Barry	Southwest High	76%	75%					
SW-08	Barry	Cassville High	71%	76%					
SW-09	Barry	Monett High	66%	80%					
SW-10	Christian	Clever High	73%	86%					
SW-11	Christian	Sparta High	58%	97%					
SW-12	Jasper	Jasper Co. High School	57%	59%					
SW-13	Jasper	Sarcoxie High	72%	57%					
SW-14	Henry	Henry Co. Jr & Sr. High	57%	76%					
SW-15	Greene	Glendale High	91%	84%					
SW-16	Hickory	Skyline High	71%	77%					
SW-17	Greene	Central High	77%	85%					
SW-18	Greene	Hillcrest High	56%	73%					
SW-19	Lawrence	Miller High	75%	66%					
SW-20	Newton	Diamond High	67%	83%					
SW-21	St. Clair	Lakeland High	61%	60%					
SW-22	Taney	Forsyth High	56%	95%					
SW-23	Taney	Branson High	79%	81%					
SW-24	Taney	Hollister High	60%	95%					
SW-25	Dallas	Buffalo High	55%	88%					
SW-26	Greene	Logan-Rogersville High	67%	90%					
SW-27	Benton	Warsaw High	76%	85%					
<b>ALL</b>			71%	80%					



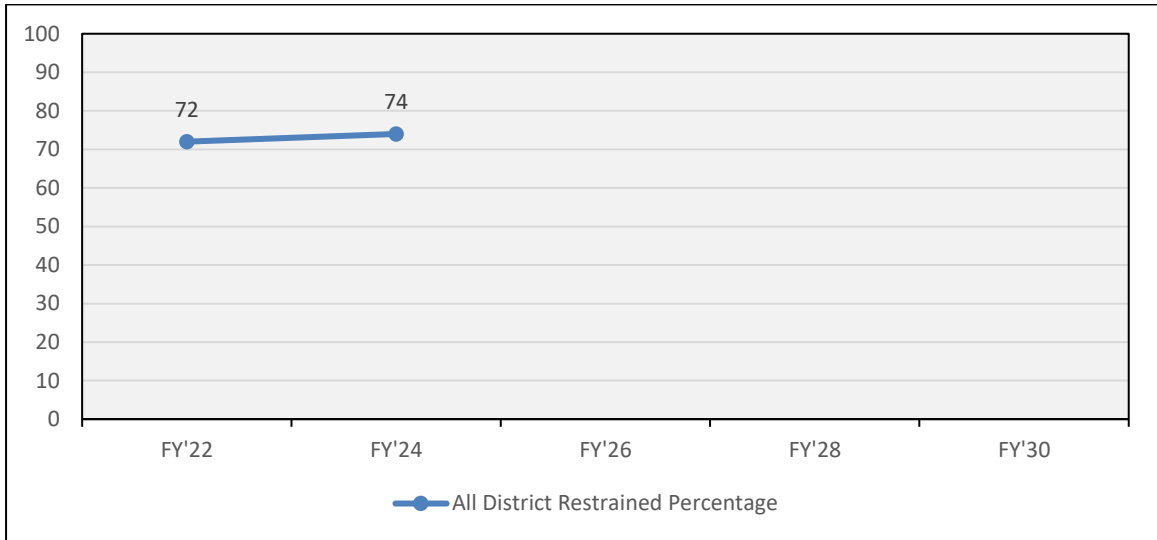
SE District High Schools  
Teenage Drivers & Teenage Passengers Combined

Southeast District (SE)			Teenage Drivers & Teenage Passengers						
Site #'s	County	High School Name (Sites 01- 25)	% Restrained by Year						
			'22	'24	'26	'28	'30	'32	'34
SE-01	Butler	Poplar Bluff High	73%	70%					
SE-02	Butler	Neelyville High	49%	55%					
SE-03	Butler	Twin Rivers High	47%	53%					
SE-04	St. Francois	Farmington Sr. High	86%	85%					
SE-05	St. Francois	North Co. Sr. High	81%	85%					
SE-06	Perry	Perryville Sr. High	66%	64%					
SE-07	Scott	Sikeston Sr. High	58%	64%					
SE-08	Ste. Genevieve	Ste. Genevieve Sr. High	67%	65%					
SE-09	Mississippi	Charleston High	41%	45%					
SE-10	Mississippi	East Prairie High	30%	36%					
SE-11	Oregon	Alton High	53%	71%					
SE-12	Ozark	Gainesville High	54%	63%					
SE-13	Pemiscot	Hayti High	24%	29%					
SE-14	Dunklin	Malden High	56%	54%					
SE-15	Bollinger	Woodland High	63%	71%					
SE-16	Stoddard	Bloomfield High	48%	48%					
SE-17	Stoddard	Bernie High	48%	58%					
SE-18	Douglas	Ava High	44%	55%					
SE-19	Carter	Van Buren High	54%	53%					
SE-20	Texas	Summersville High	44%	41%					
SE-21	Texas	Plato High	38%	21%					
SE-22	Texas	Licking High	56%	69%					
SE-23	Howell	Willow Springs High	56%	70%					
SE-24	Wright	Hartville High	65%	38%					
SE-25	Wright	Mansfield High	45%	58%					
<b>ALL</b>			60%	62%					



		Teenage Drivers & Teenage Passengers						
		% Restrained by Year						
All Districts	All Schools	'22	'24	'26	'28	'30	'32	'34
		72%	74%					

All District High Schools  
Teenage Drivers & Teenage Passengers Combined



# Attachment D

Teenage Driver & Teenage Passenger Combined  
60% or Less Seat Belt Use by School

**2024 Schools**  
**60% or Less Seat Belt Usage by School**  
**Teenage Drivers & Teenage Passenger Combined**

<b>District</b>	<b>County</b>	<b>School</b>	<b>Address</b>	<b>Use Rate</b>
NW-03	Buchanan	Lafayette High	412 Highland Avenue	52%
NW-08	Atchison	Rock Port High	600 S Nebraska St.	57%
NW-09	Atchison	Tarkio High	312 S 11th St.	53%
NW-10	Daviess	Gallatin High	602 S Olive	54%
NW-17	Chariton	Salisbury High	1000 S Maple Avenue	57%
NW-18	Sullivan	Milan High	373 S Market St.	50%
NW-20	Linn	Marceline High	314 E Santa Fe	55%
NE-06	Pike	Bowling Green High	700 West Adams Street	51%
KC-01	Clay	Excelsior Springs High	612 Tiger Drive	56%
KC-05	Jackson	Blue Springs High	2000 N.W. Ashton Drive	60%
KC-08	Jackson	William Chrisman High	1223 N Noland Road	56%
KC-10	Jackson	Lone Jack High	313 S Bynum Road	58%
KC-14	Jackson	Central High School	3221 Indiana	59%
KC-17	Jackson	East High School	1924 Van Brunt Boulevard	56%
KC-18	Lafayette	Odessa High	713 S Third St.	52%
KC-19	Jackson	Ruskin High School	7000 E 111th St.	52%
KC-24	Pettis	Smithton High	505 S Myrtle	55%
C-03	Camden	Stoutland High	7584 State Road T	38%
C-08	Maries	Belle High	504 3rd St.	45%
C-14	Pulaski	Laquey R-V High	27600 Highway AA	41%
SL-14	St. Louis	Roosevelt High	3230 Hartford St.	50%
SL-15	St. Louis	Riverview Gardens Sr. High	1218 Shepley Drive	55%
SL-19	St. Louis	Normandy High	6701 St. Charles Rock Road	55%
SW-12	Jasper	Jasper Co. High School	201 W. Mercer	59%
SW-13	Jasper	Sarcoxi High	101 S 17th St.	57%
SW-21	St. Clair	Lakeland High	12530 Lakeland School Drive	60%
SE-02	Butler	Neelyville High	289 Broadway St.	55%
SE-03	Butler	Twin Rivers High	9261 Hwy. 51	53%
SE-09	Mississippi	Charleston High	606 S. Thorn St.	45%
SE-10	Mississippi	East Prairie High	308 E. Walnut	36%
SE-13	Pemiscot	Hayti High	500 N. 4 <sup>th</sup> St.	29%
SE-14	Dunklin	Malden High	505 W/ Burkhart St.	54%
SE-16	Stoddard	Bloomfield High	505 Court St.	48%
SE-17	Stoddard	Bernie High	516 W. Main	58%
SE-18	Douglas	Ava High	507 NE 3 <sup>rd</sup> St.	55%
SE-19	Carter	Van Buren High	202 W. College	53%
SE-20	Texas	Summersville High	525 Rogers St.	41%
SE-21	Texas	Plato High	10645 Plato St.	21%
SE-24	Wright	Hartville High	175 S. School Ave	38%
SE-25	Wright	Mansfield	315 W. Ohio St.	58%