

Natural Bridge Safety Project

October 2020 update

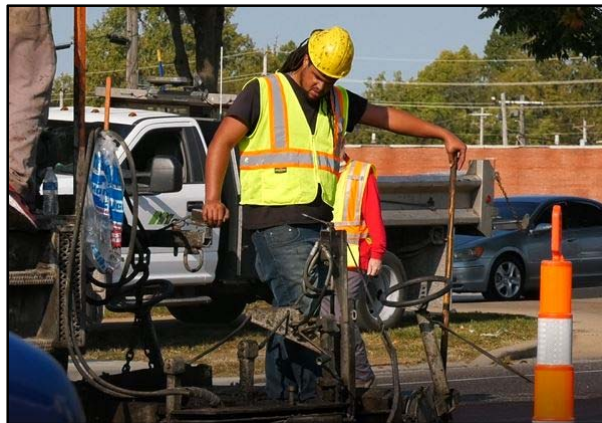
Here's an update on what you might be able to expect for the next month on our construction along Natural Bridge in the city of St. Louis.

Currently, crews continue to work on constructing medians along the roadway just west of Taylor. In addition they are working to put down a tough, thin protective layer of asphalt mixed with finely crushed rock, called a microsurface, on the west half of the project.



Over the next month, we anticipate starting construction on the roundabouts at Vandeventer and Salisbury/Parnell, and on putting down microsurfacing on the east half of the project.

Since much of the roadway has already been set up for the work, there should be little additional impacts to traffic. There will, however be impacts to on-street parking, as please be aware and move any parked vehicles along the roadway as crews move through an area. We do ask, as always, to be aware as you travel through the work zone (whether driving, walking or biking). If you do drive through the work zone, please slow down, put your phone down and put your seat belt on. The crews are working toward making Natural Bridge safer for you – so please help keep them safe.



We have also made some additional adjustments to the project, after working with local officials and businesses. At Alderwoman Sharon Tyus' request, we will not be constructing the mid-block crossing planned for east of Kingshighway with this project. We will also shift the start of the eastbound road diet from just west of Shreve to just west of Marcus and will eliminate the proposed median sections until about 150 feet west of Marcus. After working with Alderman John Collins-

Mohammad, based on concerns from Randle Funeral Home, we will not be constructing the mid-block crossing near Cora with this project.

We also wanted to share some continued good news with you about the workforce. Right now, about 35 percent of the crews working on the project are minority. In addition, more than 17 percent of the contract work is being completed by certified disadvantaged business enterprise firms. One additional minority owned firm is providing concrete for the project, however, at this time, it has not been certified as a DBE company.

