

# Welcome!

## Route AC

## (New Halls Ferry Road)

## Improvements

## Open House



**SAFETY**  
IMPROVEMENTS PROJECT  
A LIFESAVING PARTNERSHIP



SAINT LOUIS COUNTY  
Transportation and Public Works

# Crash Data

From Shackelford Rd. to Dunn Rd.  
(2016-2020)

**1800 crashes**

*5x statewide average  
for similar roads*

**22 crashes**

*involving pedestrians*

**3 crashes**

*involving bicyclists*

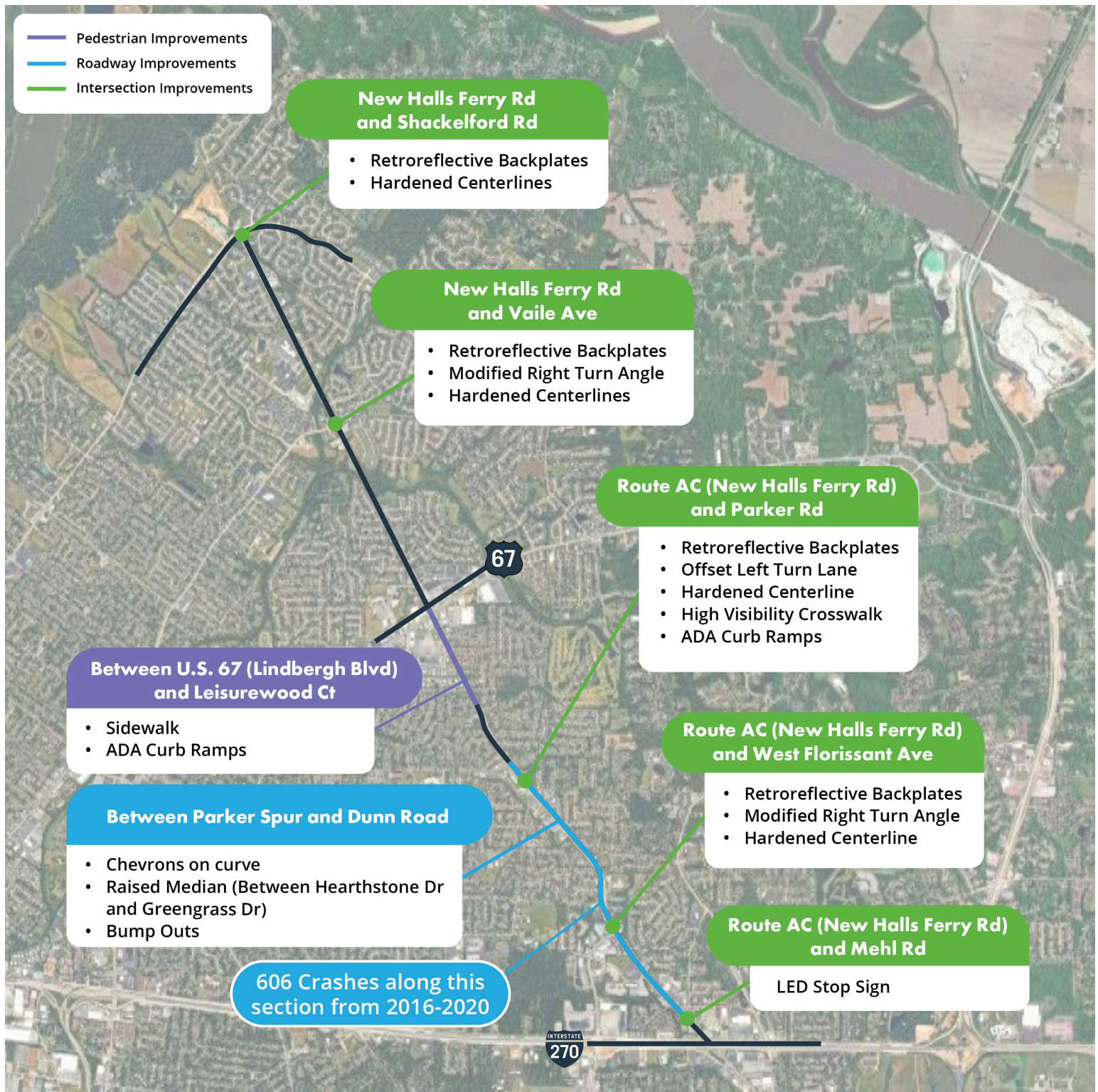


**20 crashes resulting in  
serious or fatal injuries**



SAINT LOUIS COUNTY  
Transportation and Public Works

# New Halls Ferry Improvements

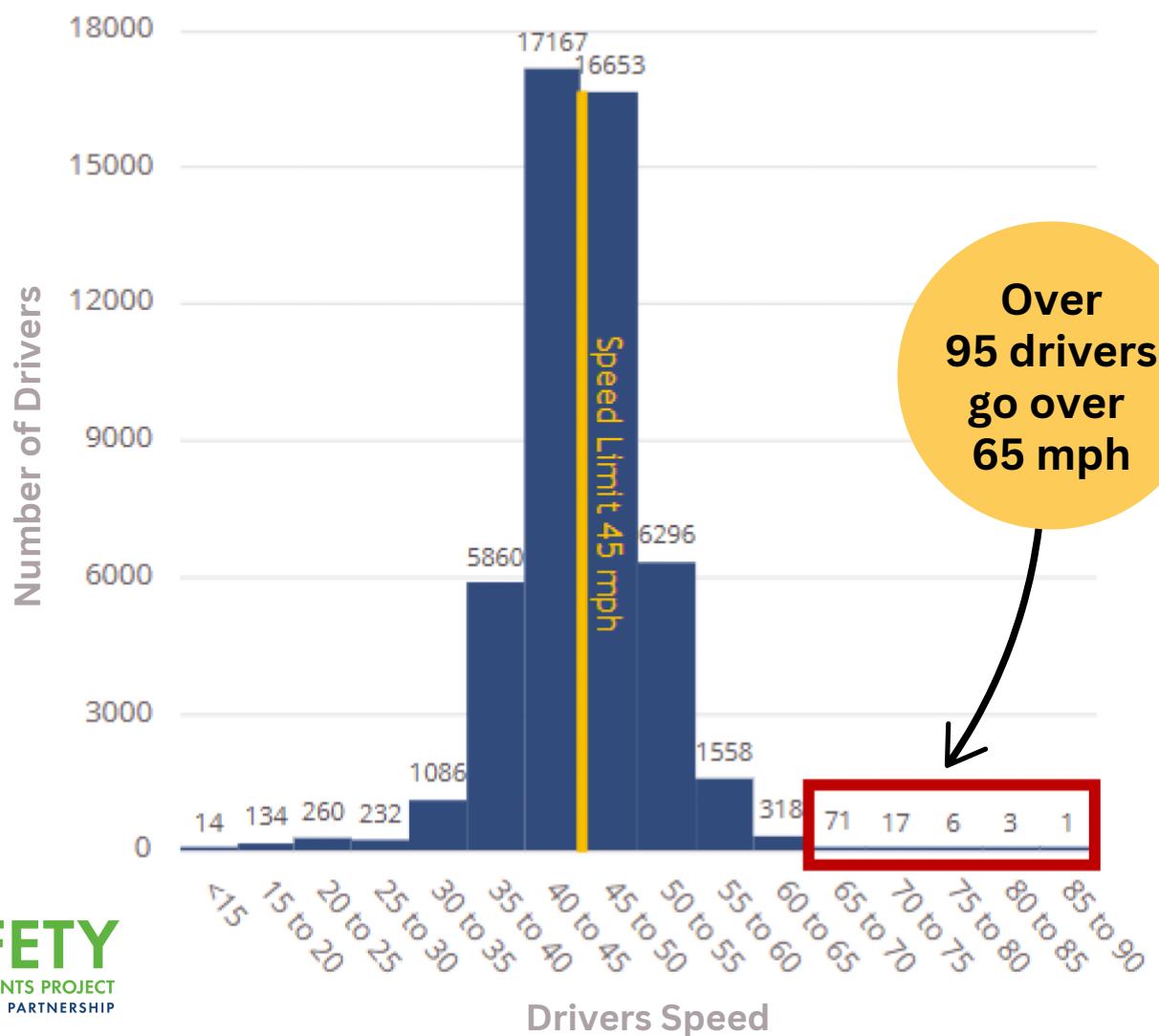


SAINT LOUIS COUNTY  
Transportation and Public Works

# New Halls Ferry Speed Study

Based on speed data collected by MoDOT for 5 days in 2024

- Posted Speed Limit: 45 mph
- Highest recorded speed: 89 mph
- 50% drive over the speed limit
- 17% travel 50 mph or more



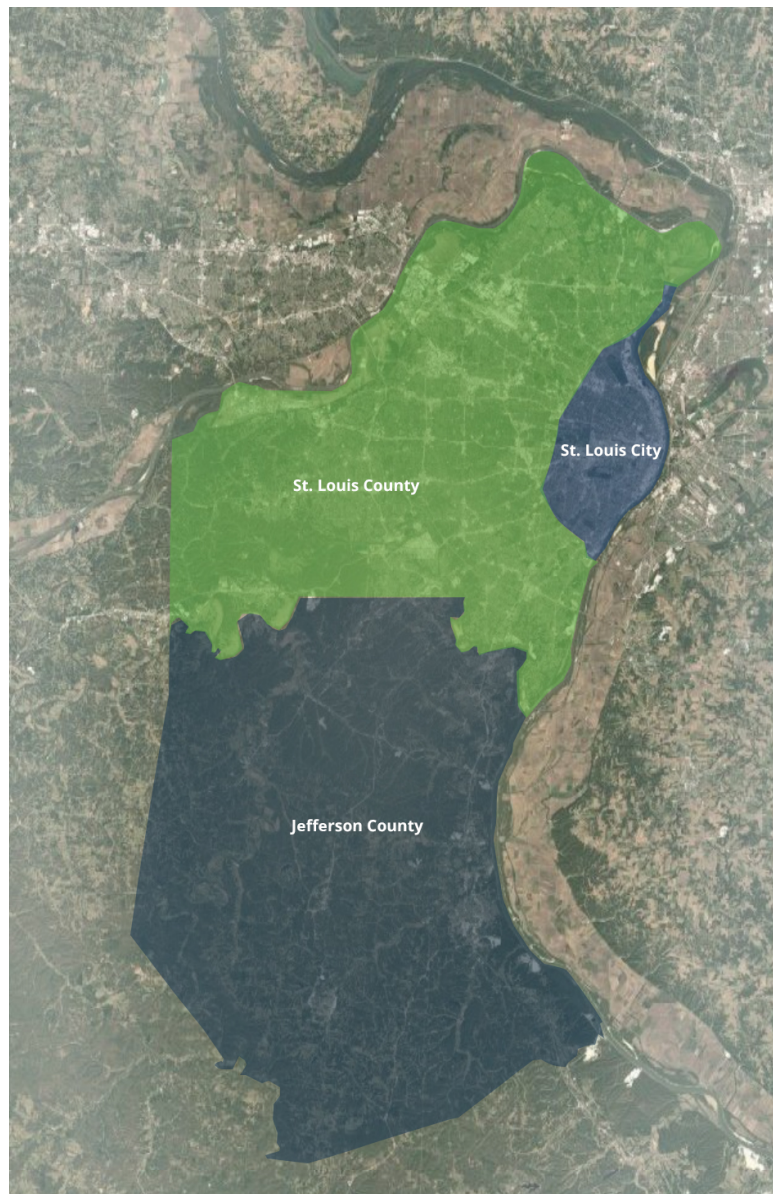
SAINT LOUIS COUNTY  
Transportation and Public Works



# Overall Project Info

**5,321 serious or  
fatal crashes**

- This project includes over 230 locations in Jefferson County, St. Louis City, and St. Louis County
- 32 unique types of safety improvements
- 430+ installations



# Project Budget & Results

## \$52 Million

MoDOT	\$48 million
St. Louis County	\$4 million

*\* St. Louis County project includes work on St. Louis County Roads only. This budget consists of \$2 million in Federal Safety Funds and \$2 million in St. Louis County funds.*

170

Serious and Fatal Injury Crashes Reduced  
(Estimated) over ten-year period

## \$1.2 Billion

In estimated societal savings due to crash reduction



*Source: The Highway Safety Manual*



# Project Goals

1. Reduce **fatal and serious injury** crashes within the budget of \$52 million.
2. Maximize safety improvements for **pedestrians and roadway users** distributed equitably across the project area.
3. Provide improvements with **reasonable maintenance** and service life.
4. Construct improvements with an emphasis on **safety for workers and the traveling public.**
5. Deliver the project by **June 30, 2026**, using a diverse workforce.



<b>Safety Improvements in North County</b>	<b>Description</b>	<b>Visual</b>
<p>Retroreflective Backplates</p>	<p>Increase visibility of signals by adding retroreflective yellow border</p>	
<p>Chevrons and Curve Warning Signs</p>	<p>These signs increase visibility of roadway curves to help drivers navigate the curve safely</p>	
<p>Stop Sign with Flashing LEDs</p>	<p>Increase visibility of stop sign by incorporating LED lights</p>	
<p>Modified Right Turns</p>	<p>Reduces angle driver must look over their shoulder to see oncoming traffic</p> <p>Encourages slower, more attentive driving in right turn lane helping both vehicles and pedestrians</p>	
<p>Offset Left-Turns</p>	<p>By shifting left-turn lanes, drivers have a clearer line of sight to choose when to turn left</p>	



# Hardened Centerline Locations

Hardened Centerline: Decreasing left-turn conflicts by extending a low median island with rumble strips into the intersection



*See strip maps located on tables for proposed locations of this safety improvement.*



SAINT LOUIS COUNTY  
Transportation and Public Works



# Curb Bump Outs Islands & Raised Median Locations

Curb Bump Out Islands: Islands along the shoulder to provide a visual prompt of a narrower roadway.

Raised Median: New median gives visual prompt of narrower roadway.



***See strip maps located on tables for proposed locations of this safety improvement.***



# Next Steps

**Thank you for joining us today at this open house! Before you go:**

Complete a comment form!

Paper forms are available in the  
Comment Area or scan the QR code to  
complete it online.

We appreciate your feedback!



**Stay updated! Sign up for updates on the website:**

**[www.MoDOT.org/SLSafetyProject](http://www.MoDOT.org/SLSafetyProject)**

