



NORTHBOUND MISSOURI ROUTE 13 BRIDGE REPLACEMENT

In Humansville



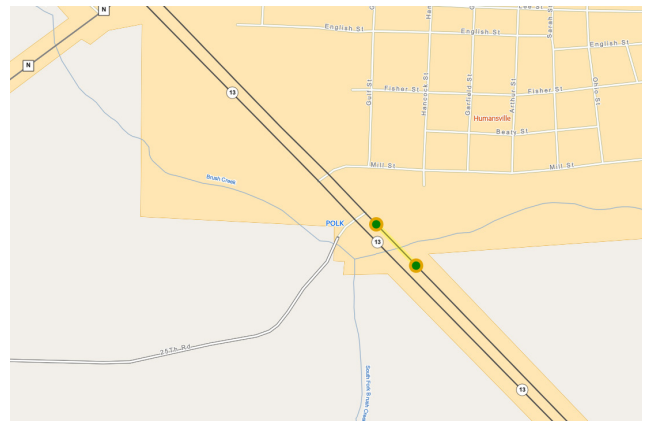
PROJECT FACTS

- Replace northbound Missouri Route 13 bridge over Brush Creek in Humansville
- New bridge will be sixteen feet wider and fifty feet longer than the current bridge



TRAFFIC IMPACTS

- One lane of Route 13 over Brush Creek will be open during construction
- Crossovers will be constructed to allow northbound traffic to use the existing southbound bridge in a head-to-head configuration
- No detour will be provided



CONSTRUCTION

- Construction to begin in Spring 2026
- Estimated Total Cost: \$3.6 million



BRIDGE FACTS

- Bridge built in 1958
- Bridge carries 6,534 vehicles a day
- Current bridge undergoes frequent repairs

Scan to sign up for
Project Updates!



For more information, contact the MoDOT Southwest District at:

417.895.7600 tel | swcr@modot.mo.gov | www.modot.org/southwest

MoDOT.Southwest

MoDOT_Southwest

@MoDOT_Southwest