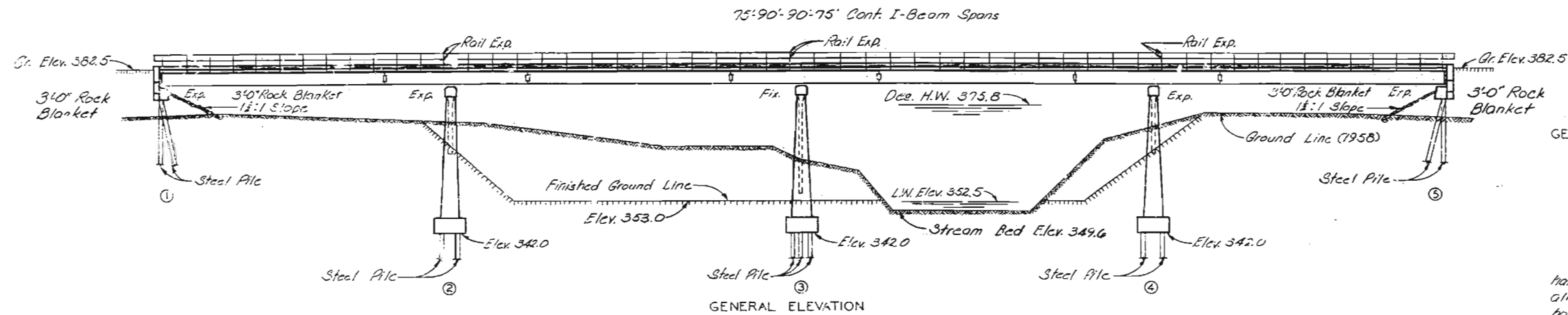


MISSOURI STATE HIGHWAY DEPARTMENT

FED. ROAD DIST. NO.	STATE	FED. AID PROJ. NO.	FISCAL YEAR	SHEET NO.	TOTAL SHEETS
5	MO.		19	29	



Note: All piling shall be 10" bearing piles of 42" and shall conform with details and notes on Sheet No. 2 of design plans. Estimated quantities shown on plans are based on the following lengths: 5 @ 60'-0", 5 @ 70'-0" and 26 @ 35'-0". These indicated lengths are approximate only. Proper lengths to give required bearing and/or penetration will be authorized by the Engineer.

All piles shall be driven to or into solid rock, boulders, shale, or cemented gravel; or to not less than full length whichever is required to sustain a load of at least 37 ton per pile.

All Pile shall be driven with a steam hammer.

GENERAL NOTES:

Design Specifications A.S.T.C. 1757

Loading H10-44

Structural Steel Stress 12,000 psi

Reinforcing Steel Stress 20,000 psi

Class "B" Concrete Stress 1200 psi

All concrete shall be Class "B"

Rivets 3/4"; holes 1/2", except where otherwise noted.

Field connections shall be riveted except as noted in handrail details or, if the Contractor desires to eliminate all field riveting on this project, he may use high tensile steel bolts with carburized washers for the expansion device and the beam splices and American Standard Regular machine bolts for other field connections except for the 5/8" rivet head bolts specified for handrail.

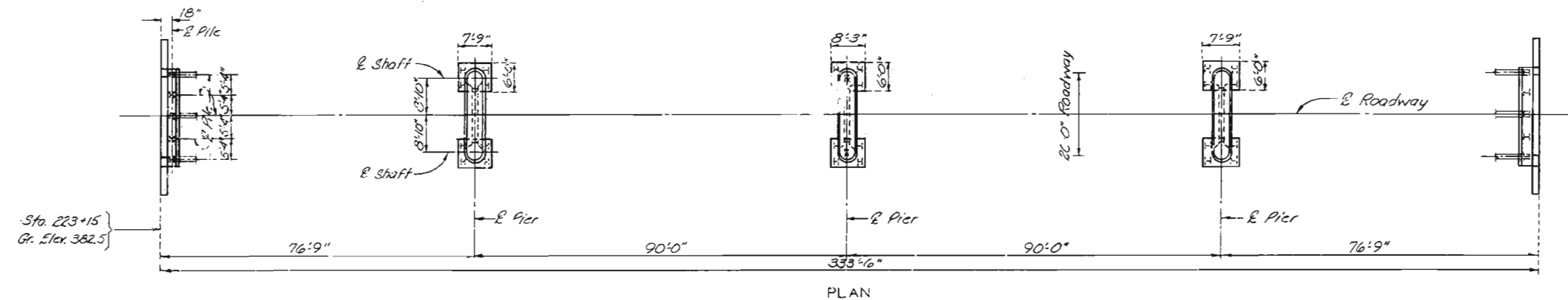
Paint: Shop, none; Field, contact surfaces of bolted field connections, except where high tensile bolts are used, one coat of red lead and surfaces inaccessible after erection three coats of red lead. No other paint to be applied by Contractor except as noted for steel piles. Red lead required shall be furnished by Contractor. Payment for cleaning and painting such surfaces will be included in unit price bid for fabricated structural steel.

Where joint filler is specified on the plans it shall conform with the requirements for Rammed Material for Filler as given in Section 59-22D of the Standard Specifications.

See Section 22-9C of Standard Specifications for required painting of steel piles.

Qualification of welding operators will be required.

Permits must be obtained for all truck loads over 12 gal length.

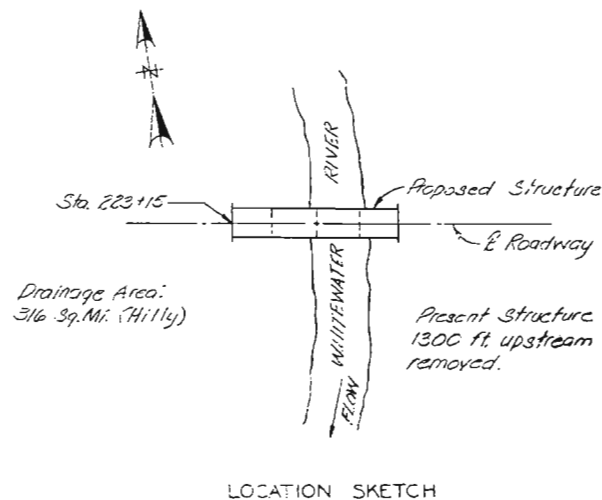


ESTIMATED QUANTITIES			
Item	Substr.	Superstr.	Total
Class 1 Excavation for Structures Cu.Yds.	320		320
Class 2 Excavation for Structures Cu.Yds.	257		257
Class "B" Concrete Cu.Yds.	193.9	160.0	353.9
Reinforcing Steel Lbs.	12,340	32,330	44,670
Fabricated Structural Steel Lbs.		222,000	222,000
Gray Iron Alloy Castings Lbs.		1290	1290
Steel Piles in Place Lin. Ft.	1452		1452
Steel Pile Cut-offs Lin. Ft.	108		108

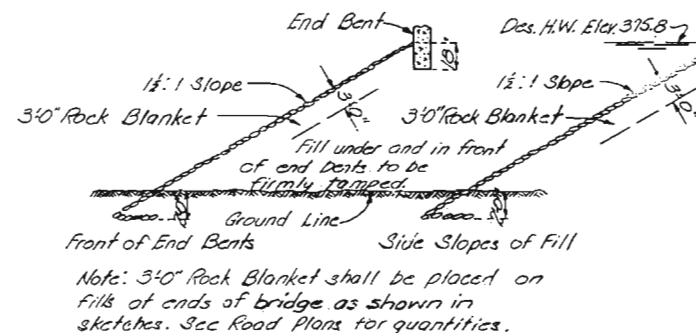
Note: Excavation for bridge made above Elev. 353.5 will be paid for as Class 1 Excavation for Structures.

Excavation for bridge made below Elev. 353.5 will be paid for as Class 2 Excavation for Structures.

* Final pay weight for Fabricated Structural Steel will be based on using field rivets except for bolted connections specified for handrail.



LOCATION SKETCH



ROCK BLANKET SKETCHES

Note: This drawing is not to scale. Follow dimensions.

Drawn JULY 1958 by J.D.R.
Checked Sep. 1958 by J.H.K.

Sheet No. 1 of 7

SEE FINAL PLANS BROWN-LINES

B.M. #35 Elev. 340.24 N.I.N.S. 20" Willow 70' Rt. Sta. 224+92

BRIDGE OVER WHITEWATER RIVER

STATE ROAD FROM BURFORDVILLE SOUTHEAST TO ROUTE 52

ABOUT 12.0 MILES S.W. OF JACKSON

PROJECT NO. S-1892 (1) (500) STA. 223+15

CAPE GIRARDEAU COUNTY

SUBMITTED BY J. A. Williams DATE 10-28-1958
APPROVED BY Rex M. Whittier DATE 10-28-1958
CHIEF ENGINEER

STD. C-110R6

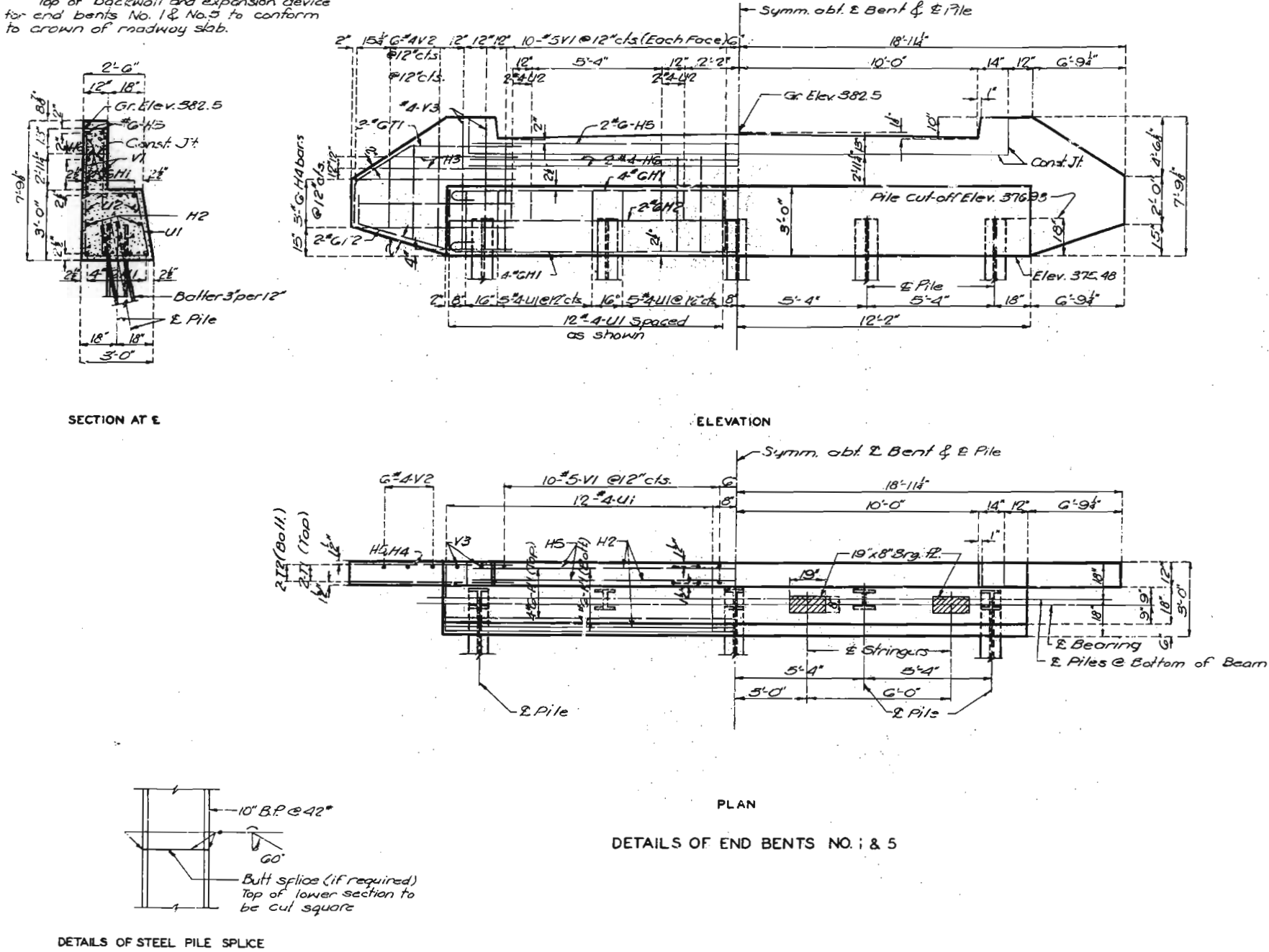
N-690

408

MISSOURI STATE HIGHWAY DEPARTMENT

FED. ROAD DIST. NO.	STATE	FED. AID PROJ. NO.	FISC. YEAR	SHEET NO.	TOTAL SHEETS
5	MO.		19	20	

Note: Backwall above construction joint shall not be poured until the structural steel of the expansion device has been installed and slab has been poured in adjacent span.
Top of backwall and expansion device for end bents No. 1 & No. 5 to conform to crown of roadway slab.



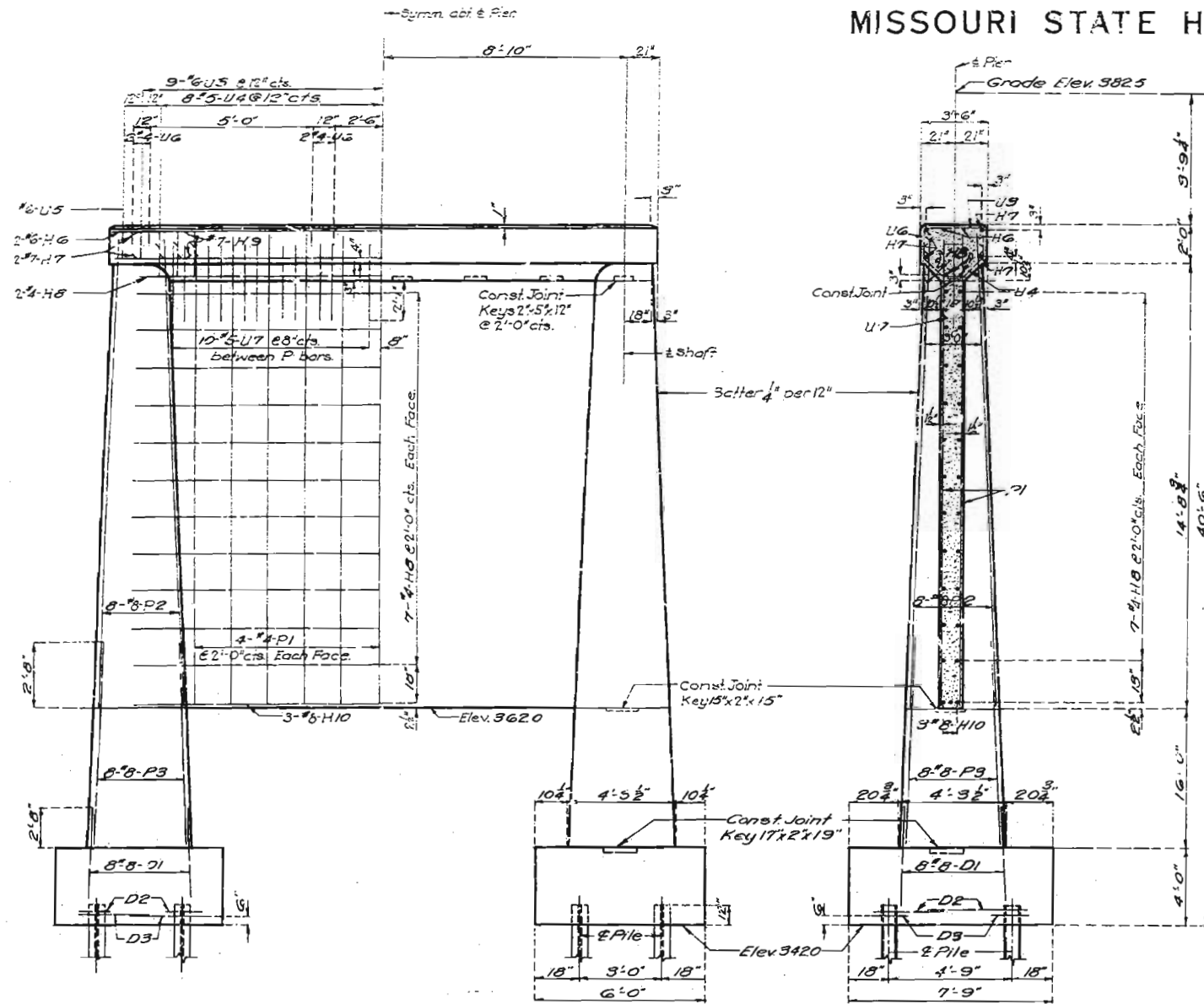
COMPLETE BILL OF REINFORCING STEEL									
No.	Size	Length	Mark	Location	No.	Size	Length	Mark	Location
END BENTS NO. 1 & 5									
16	#6	26'-0"	H1	Beam	444	#5	2'-3"	C1	Curb
4	#6	24'-0"	H2	Br. & Bk'wall	36	#6	26'-6"	C2	"
3	#6	7'-0"	H3	Wing	36	#6	32'-0"	C3	"
12	#6	8'-6"	H4	"	1322	#4	22'-0"	S1	Slab
4	#6	22'-0"	H5	Bk'wall	584	#4	29'-6"	S3	"
8	#6	13'-9"	T1	Wing	84	#4	2'-0"	S4	"
8	#6	10'-6"	T2	"					
48	#4	11'-3"	U1	Beam					
16	#4	3'-3"	U2	"					
80	#5	5'-6"	V1	Bk'wall					
12	#4	10'-0"	V2	Wing					
8	#4	7'-6"	V3	"					
16	#2	19'-9"	W1	A.B. Well					
8	#4	22'-0"	H6	Bk'wall					
PIERS NO. 2 & 4									
32	#8	5'-6"	D1	Footing					
16	#6	7'-6"	D2	"					
16	#6	7'-0"	D3	"					
4	#6	20'-0"	H6	Cap					
8	#7	17'-9"	H7	"					
32	#4	17'-9"	H8	Web					
8	#7	9'-6"	H9	Cap					
6	#8	18'-6"	H10	Web					
28	#4	16'-3"	P1	"					
32	#8	16'-3"	P2	Shaft					
32	#8	18'-6"	P3	"					
34	#6	6'-6"	U3	Cap					
30	#5	6'-9"	U4	"					
4	#6	6'-3"	U5	"					
16	#4	4'-3"	U6	"					
40	#5	8'-0"	U7	Web					
16	#2	19'-9"	W1	A.B. Well					
PIER NO. 3									
16	#8	5'-6"	D1	Footing					
8	#6	7'-0"	D3	"					
8	#6	10'-0"	D4	"					
2	#6	20'-0"	H6	Cap					
4	#7	17'-9"	H7	"					
26	#4	17'-9"	H8	Web					
4	#7	9'-6"	H9	Cap					
3	#8	18'-6"	H10	Web					
16	#8	26'-6"	P4	Shaft					
14	#4	26'-0"	P5	Web					
16	#8	8'-6"	P6	Shaft					
17	#6	6'-6"	U3	Cap					
13	#5	6'-9"	U4	"					
2	#6	6'-3"	U5	"					
8	#4	4'-3"	U6	"					
20	#5	8'-0"	U7	Web					
8	#2	19'-9"	W1	A.B. Well					

BRIDGE OVER WHITEWATER RIVER
STATE ROAD FROM BURFORDVILLE SOUTHEAST TO ROUTE 52
ABOUT 12.0 MILES S.W. OF JACKSON
PROJECT NO. S-1892(1) (S00) STA. 223+15
CAPE GIRARDEAU COUNTY

409

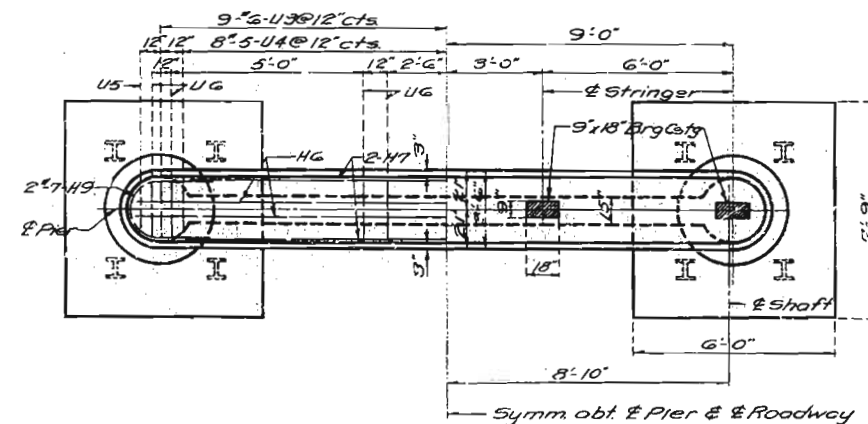
MISSOURI STATE HIGHWAY DEPARTMENT

FED. ROAD DIST. NO.	STATE	FED. AID PROJ. NO.	FISCAL YEAR	SHEET NO.	TOTAL SHEETS
5	MO.		19	31	



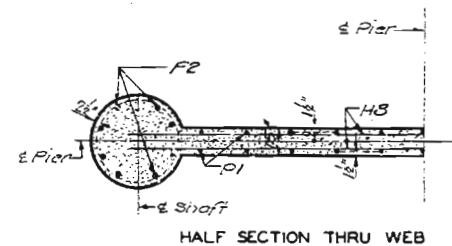
ELEVATION

SECTION AT C

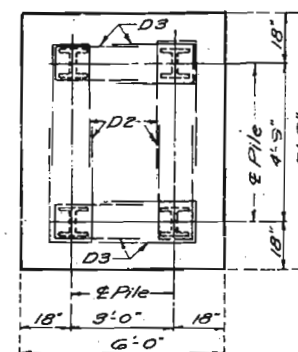


PLAN

DETAILS OF PIER NO. 2 & NO. 4



HALF SECTION THRU WEB



DETAIL OF FOOTING SHOWING REINFORCING

BRIDGE OVER WHITEWATER RIVER

STATE ROAD FROM BURFORDVILLE SOUTHEAST TO ROUTE 52
ABOUT 12.0 MILES S.W. OF JACKSON

PROJECT NO. S-18920 (S00) STA. 223+15

CAPE GIRARDEAU COUNTY

Assembled July 1958 by JDR & JCF
Checked Oct. 1958 by JCF

Note: This drawing is not to scale. Follow dimensions.

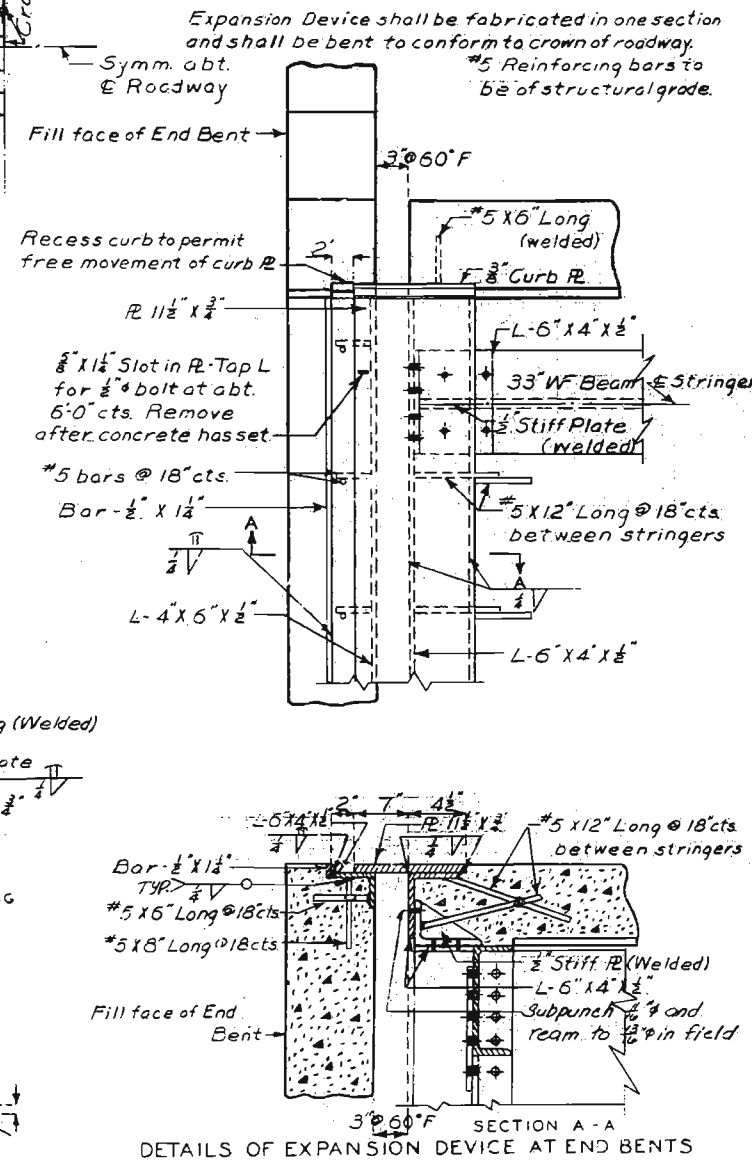
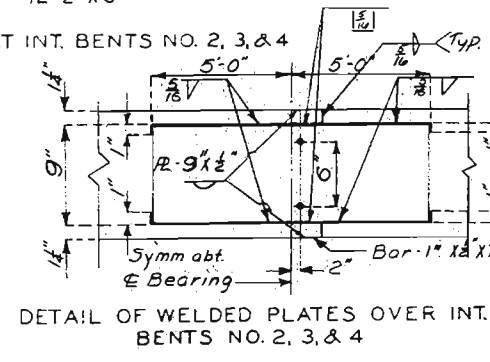
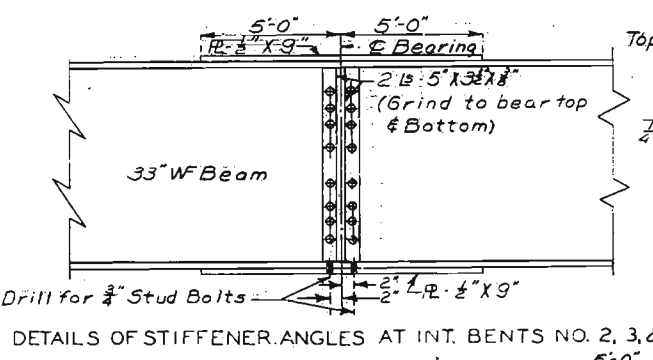
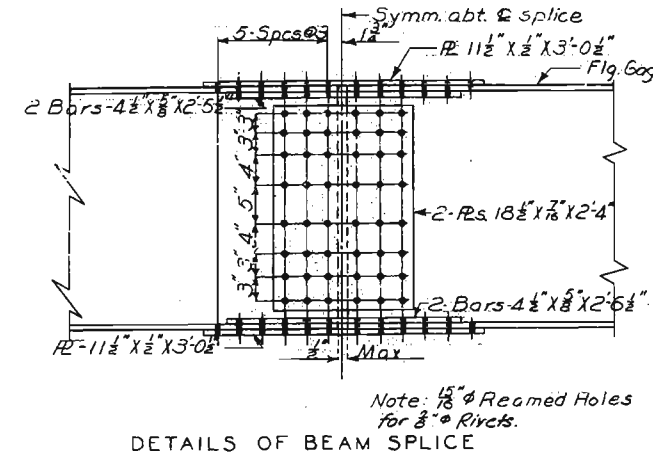
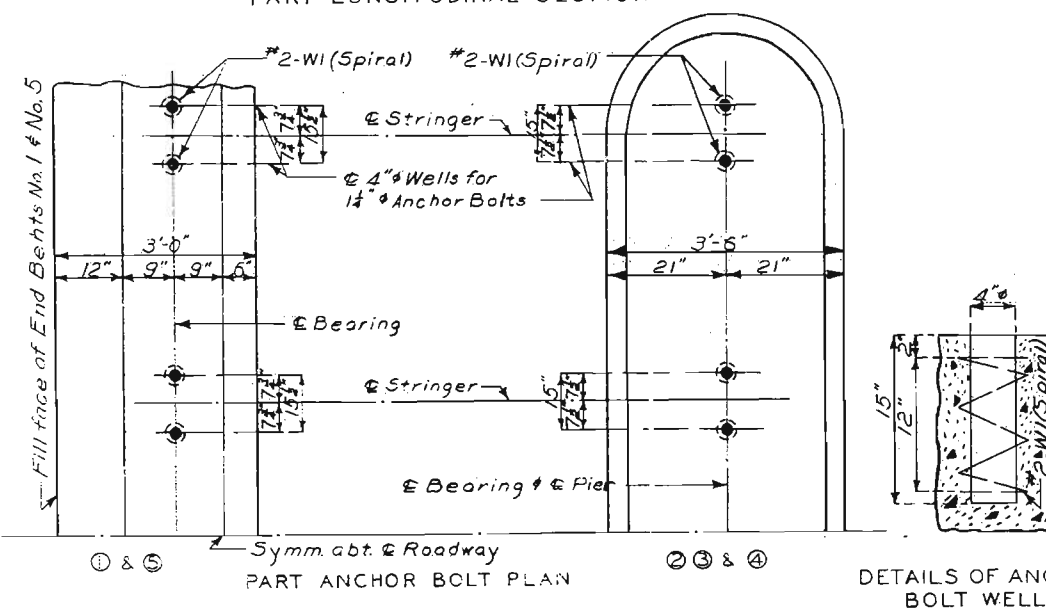
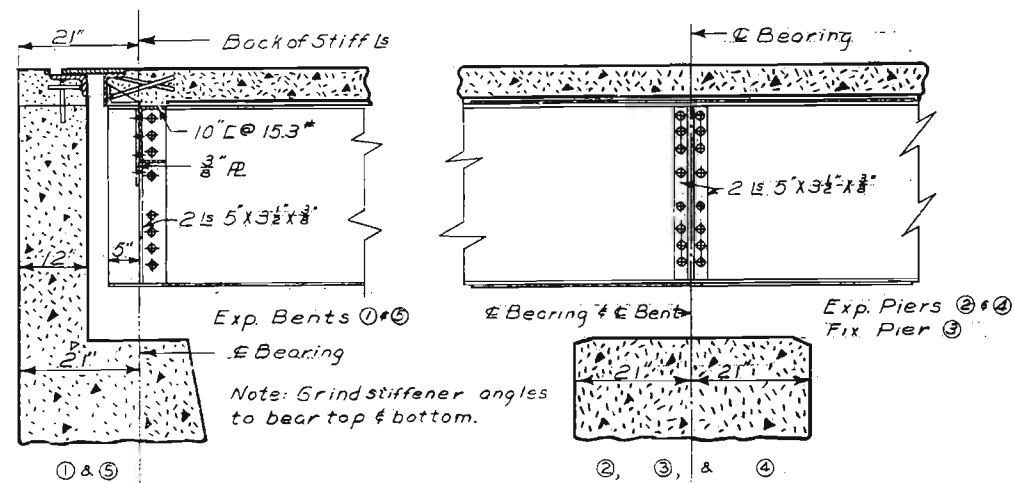
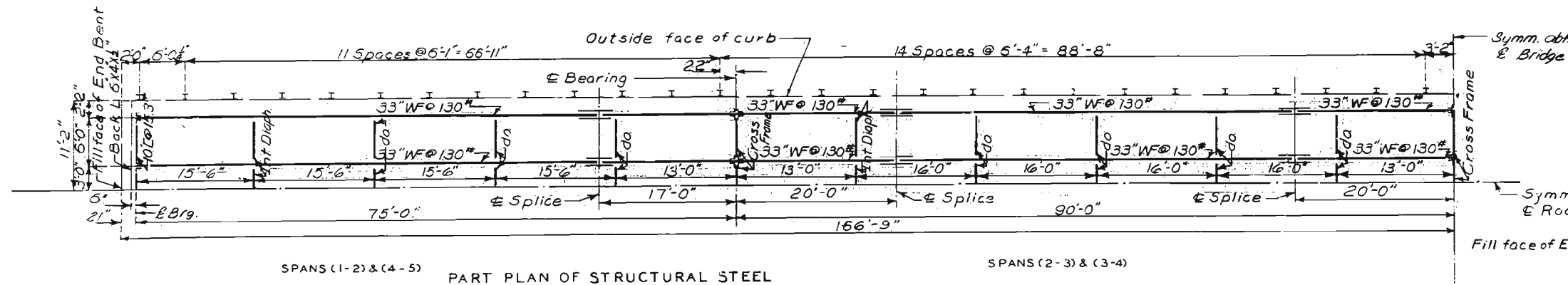
Sheet No. 3 of 7

NO CONSTRUCTION CHANGES

N-690

MISSOURI STATE HIGHWAY DEPARTMENT

FED. ROAD DIST. NO.	STATE	FED. AID PROJ. NO.	FISCAL YEAR	SHEET NO.	TOTAL SHEETS
5	MO.		19	33	



BRIDGE OVER WHITEWATER RIVER
 STATE ROAD FROM BURFORDVILLE SOUTHEAST TO ROUTE S 2
 ABOUT 12.0 MILES S.W. OF JACKSON
 PROJECT NO. S-1892(11) (SCO) STA. 223+15
 CAPE GIRARDEAU COUNTY

Drawn JULY 1958 by JCK
 Checked OCT 1958 by Q.F.K.

Note: This drawing is not to scale. Follow dimensions.

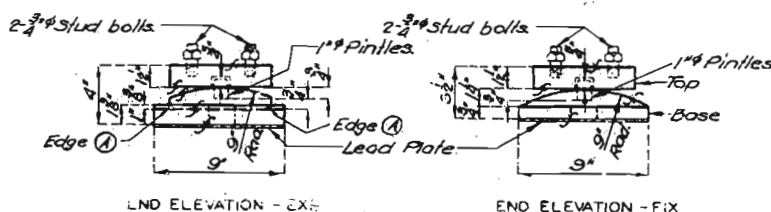
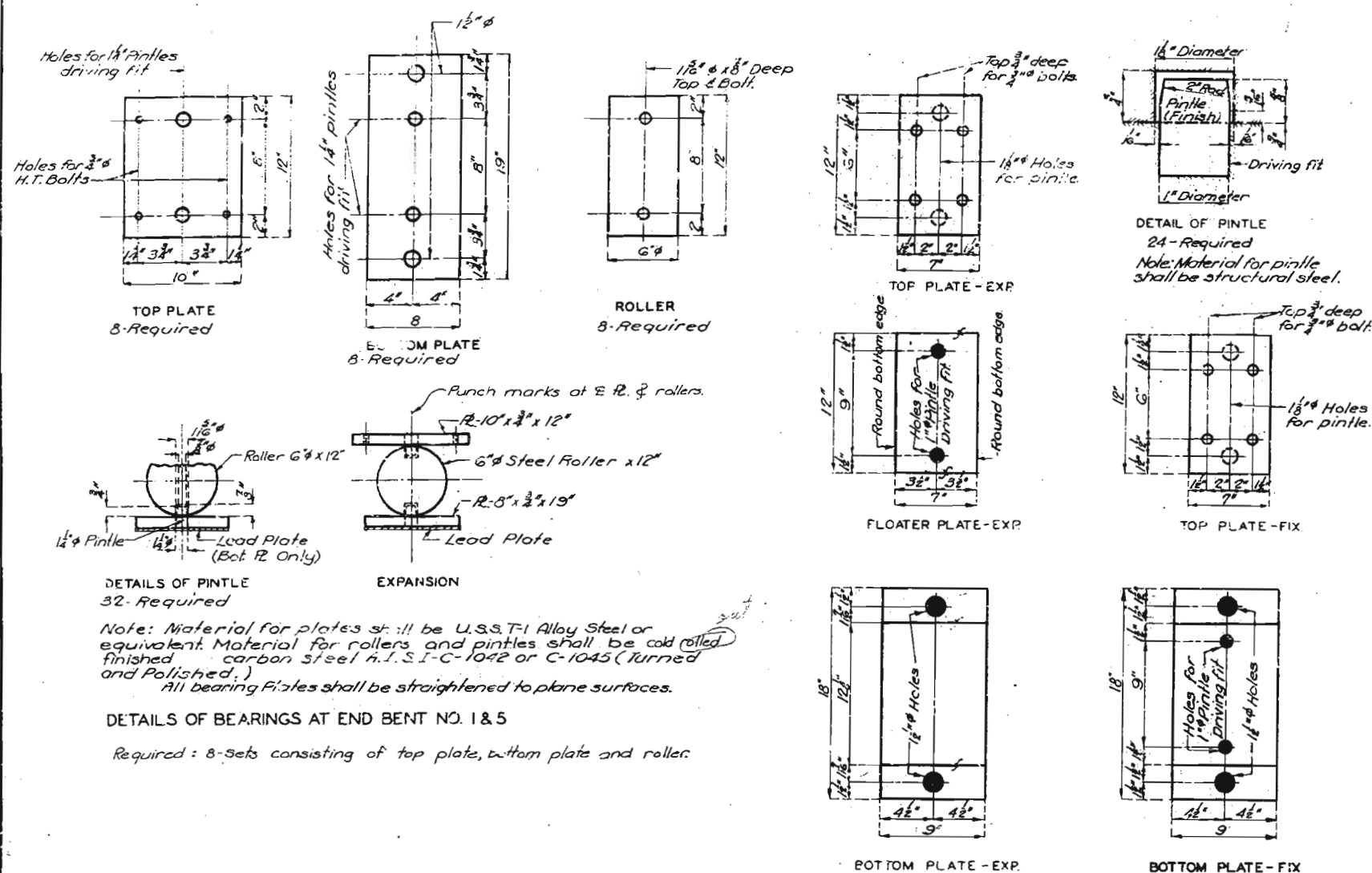
Sheet No. 5 of 7

NO CONSTRUCTION CHANGES

N-690

MISSOURI STATE HIGHWAY DEPARTMENT

PRO. ROAD	STATE	FILE NO.	SCALE	SHEET	TOTAL
DIST. NO.		BRIDGE NO.	YEAR	NO.	SHEETS
1	MO.	1	1958	7	7



TYPE "B" AT INT. BENTS NO. 2, 3 & 4

Required: 8-Sets of Expansion Castings Bent No. 2 & 4
4-Sets of Fix Castings Bent No. 3

Note: Bearing Castings shall be either cast steel or gray iron alloy, but payment will be made as gray iron alloy.
Finish all surfaces marked "F".
All bolts, nuts, and pintles shall be paid for as Fabricated Structural Steel.
Edge (A) to be rounded. (1/4" to 1/2" radius).

DETAILS OF BEARING CASTINGS

Note: This drawing is not to scale. Follow dimensions.

Sheet No. 7 of 7.

NO CONSTRUCTION CHANGES

BRIDGE OVER WHITEWATER RIVER

STATE ROAD FROM BURDORFVILLE SOUTHEAST TO ROUTE 52
ABOUT 12.0 MILES S.W. OF JACKSON
PROJECT NO. S-1892(1) (S007) STA. 223+15
CAPE GIRARDEAU COUNTY

N-690

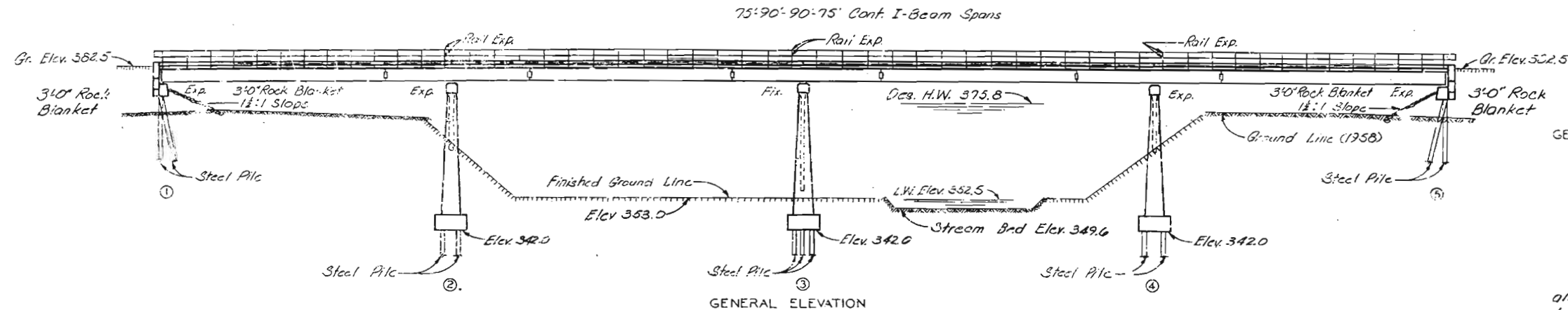
Assembled July 1958 by J.C.K. & B.E.G.
Checked Oct 1958 by G.F.K.

413

MISSOURI STATE HIGHWAY DEPARTMENT

FINAL PLANS

FED. ROAD DIST. NO.	SHEET NO.	FED. AID PROJ. NO.	FISCAL YEAR	SHEET NO.	TOTAL SHEETS
5	MO.		1958	29	



GENERAL NOTES:

Design Specifications A.A.S.H.O. 1957
 Loading H10-44
 Structural Steel Stress 18,000 #/sq.
 Reinforcing Steel Stress 20,000 #/sq.
 Class "B" Concrete Stress 1200 #/sq.
 All concrete used was Class "B."

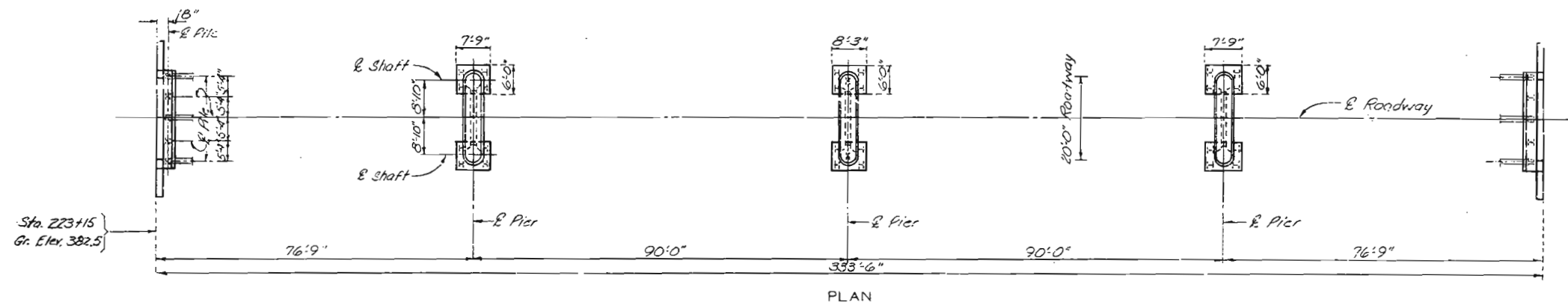
The Contractor desired to eliminate all field riveting on this project and used high tensile steel bolts with torquized washers for the expansion device and the beam splices and American Standard Regular machine bolts for other field connections except for the 8" rivet head bolts specified for handrail.

Note: All piling were 10" bearing piles of A2* and did conform with details and notes on sheet No. 2 of design plans.

Proper lengths to give required bearing and/or penetration was authorized by the Engineer.
 All piles were driven to or into solid rock, boulders, shale, or cemented gravel, or to not less than full length authorized and to sustain a load of at least 37 ton per pile.
 All Pile were driven with a steam hammer.

Paint: Shop, none; Field, contact surfaces of bolted field connections, except where high tensile bolts are used, one coat of red lead and surfaces in accessible after erection three coats of red lead. No other paint was applied by Contractor except as noted for steel piles. Red lead required was furnished by Contractor. Payment for cleaning and painting such surfaces was included in unit price bid for fabricated structural steel.

Where joint filler is specified on the plans it did conform with the requirements for Pre-mixed Material for Filler as given in Section 59-22D of the Standard Specifications. See Section 22-9C of Standard Specifications for required painting of steel piles. Qualification of welding operators was required.

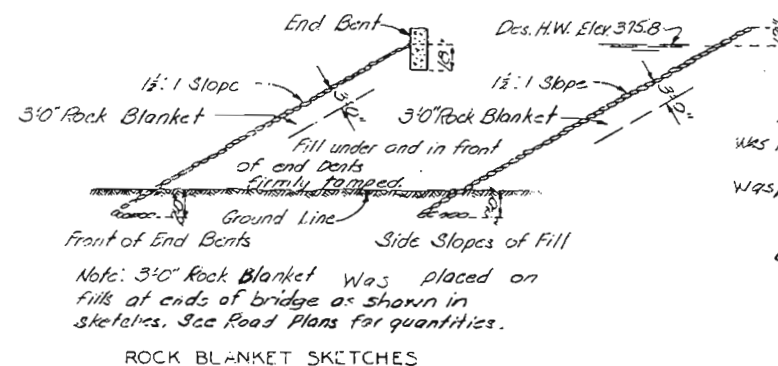
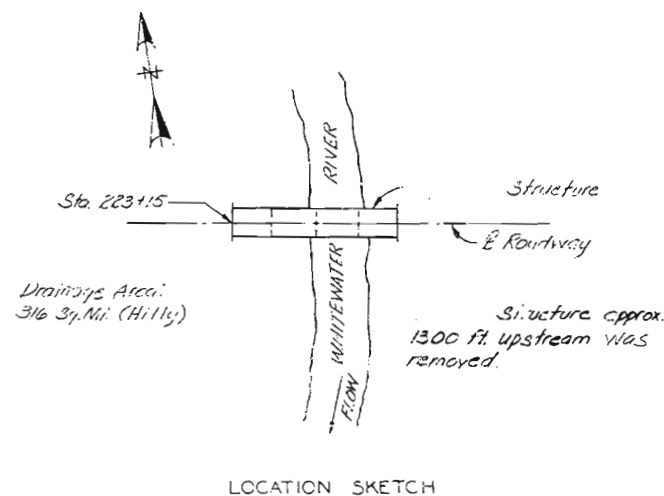


FINAL QUANTITIES			
Item	Subst.	Superst.	Total
Class 1 Excavation for Structures Cu.Yds.	316		316
Class 2 Excavation for Structures Cu.Yds.	255		255
Class "B" Concrete Cu.Yds.	123.9	160.0	353.9
Reinforcing Steel Lbs.	12340	32330	44670
Fabricated Structural Steel Lbs.		221820	221820
Gray Iron Alloy Castings Lbs.		1300	1300
Steel Piles in Place Lin. Ft.	1477		1477
Steel Pile Cut-offs Lin. Ft.	108		108

B.M. Elev. 366.68
 N.I.N.R. 60" Twin Sycamore, 100' Ri. Sta. 225+73

BRIDGE OVER WHITEWATER RIVER

STATE ROAD FROM BURFORDVILLE SOUTHEAST TO ROUTE 52
 ABOUT 12.0 MILES S.W. OF JACKSON
 PROJECT NO. 5-1892 (1) (SCO) STA. 223+15
 CAPE GIRARDEAU COUNTY



Note: Excavation for bridge made above Elev. 353.5 was paid for as Class 1 Excavation for Structures.
 Excavation for bridge made below Elev. 353.5 was paid for as Class 2 Excavation for Structures.
 * Final pay weight for Fabricated Structural Steel based on using field rivets except for bolted connections specified for handrail.

SUBMITTED BY J.A. Williams DATE 10-28-1958
 APPROVED BY Rex M. Wooten DATE 10-28-1958
 CHIEF ENGINEER

STD. C-10106
 N-690

Drawn JULY 1958 by J.D.R.
 Checked Sept 1958 by A.F.K.

Note: This drawing is not to scale. Follow dimensions.

Sheet No. 1A of 1

FINAL PLANS

MISSOURI HIGHWAY AND TRANSPORTATION COMMISSION

STATE	PROJ. NO.	SHEET NO.
MO.	JOS0496	4
SEC/SUR	36 TWP 31N RGE 11E	

GENERAL NOTES:

DESIGN SPECIFICATIONS:

A.A.S.H.T.O. 1989 AND INTERIM 1990.

DESIGN LOADING:

1993 MISSOURI LEGAL LOADS.
NO FUTURE WEARING SURFACE

DESIGN UNIT STRESSES:

STRUCTURAL CARBON STEEL FS=20,000 PSI.

PAINT:

CALCIUM SULFONATE (2 COATS) (SEE SPECIAL PROVISIONS).

OLD AND NEW WORK:

OUTLINE OF OLD WORK IS INDICATED BY LIGHT DASHED LINES.
HEAVY LINES INDICATE NEW WORK.

DIMENSIONS:

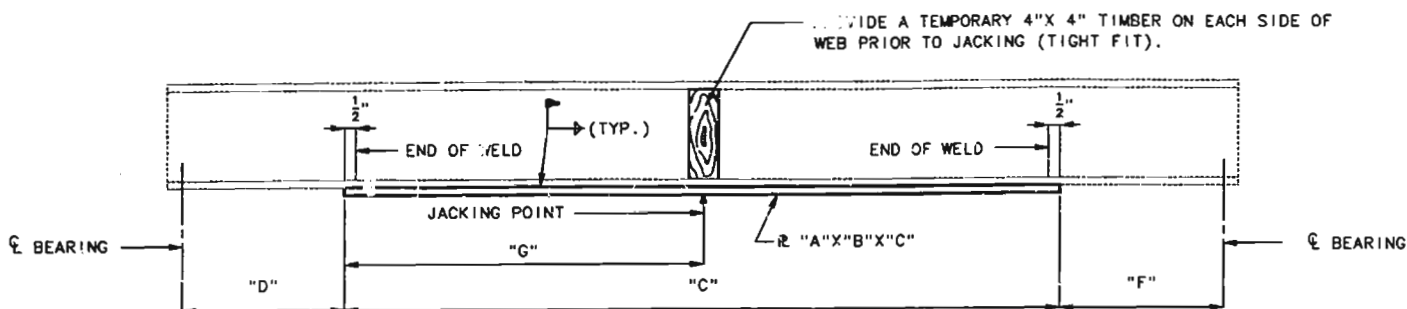
LONGITUDINAL DIMENSIONS ARE BASED ON THE ORIGINAL DESIGN PLANS.

TRAFFIC:

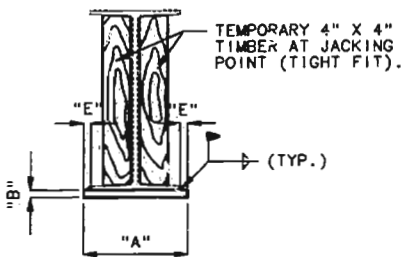
MAINTAIN ONE LANE OF TRAFFIC DURING CONSTRUCTION. (SEE ROADWAY TRAFFIC CONTROL PLANS).

STRINGER SUPPORT:

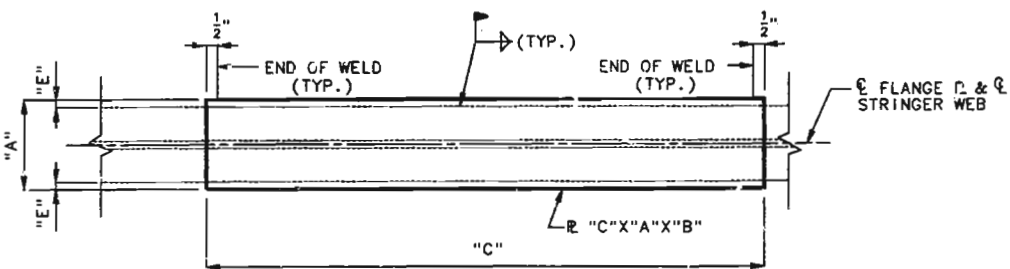
THE EXISTING STRINGERS SHALL BE RAISED SIMULTANEOUSLY * AT JACKING POINT AND SUPPORTED DURING WELDING OF NEW STEEL PLATES. THE TEMPORARY SUPPORTS MUST BE CAPABLE OF SAFELY SUPPORTING APPROXIMATELY ** TONS PER STRINGER. (SEE SPECIAL PROVISIONS).



TYPICAL ELEVATION OF STRINGER
SPAN (1-2) & (4-5)



SECTION THRU STRINGER



DETAIL OF FLANGE R

STRINGER LOCATION		TABLE OF DIMENSIONS								
		DIMENSIONS								
		"A"	"B"	"C"	"D"	"E"	"F"	"G"	"H"	"I"
SPAN 1-2	EXTERIOR	14"	1"	36'-9"	18'-3"	1 1/2"	20'-0"	9 1/8"	56	11'-9"
SPAN 1-2	INTERIOR	14"	1"	36'-9"	18'-3"	1 1/2"	20'-0"	9 1/8"	56	11'-9"
SPAN 4-5	EXTERIOR	14"	1"	36'-9"	20'-0"	1 1/2"	18'-3"	9 1/8"	56	25'-0"
SPAN 4-5	INTERIOR	14"	1"	36'-9"	20'-0"	1 1/2"	18'-3"	9 1/8"	56	25'-0"

DESIGNED: MAR. 1993
DETAILED: JULY 1993
CHECKED: JULY 1993

NOTE: THIS DRAWING IS NOT TO SCALE. FOLLOW DIMENSIONS.

SHEET NO. 1A OF 1

SEE FINAL PLANS

CAPE GIRARDEAU COUNTY

DATE 8/18/93

REPAIRS TO BRIDGE OVER WHITEWATER RIVER

ABOUT 12 MILES S. W. OF JACKSON.

STATE ROAD FROM BURFORDVILLE TO GORDONVILLE.

PROJECT NO. JOS0496 STA. 223+15.00

JOB NO. JOS0496 RTE. 00

STD.

STD.

N06901

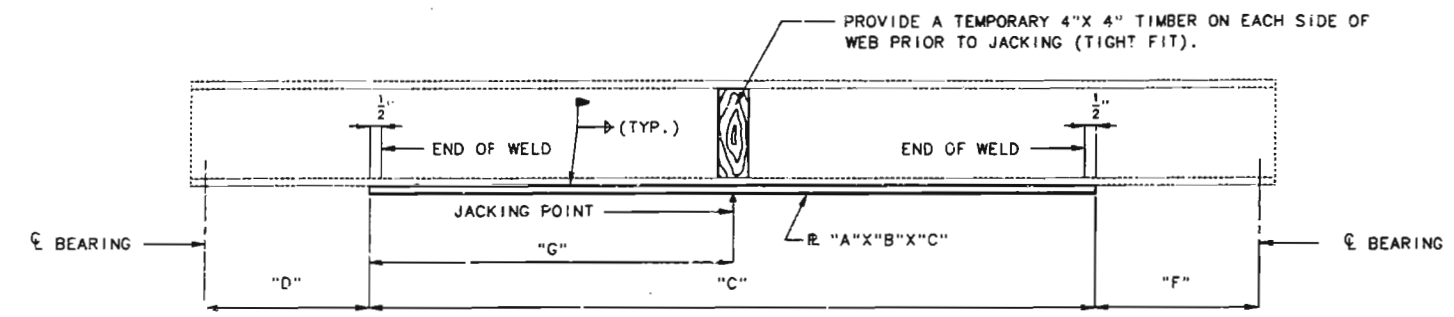
MISSOURI HIGHWAY AND TRANSPORTATION COMMISSION

STATE	PROJ. NO.	SHEET NO.
MO.	JOS0496	4
SEC/SUR	36	TWP 31N RGE 11E

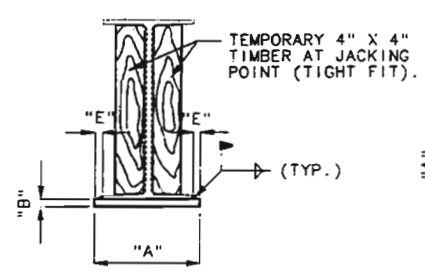
FINAL PLANS

GENERAL NOTES:

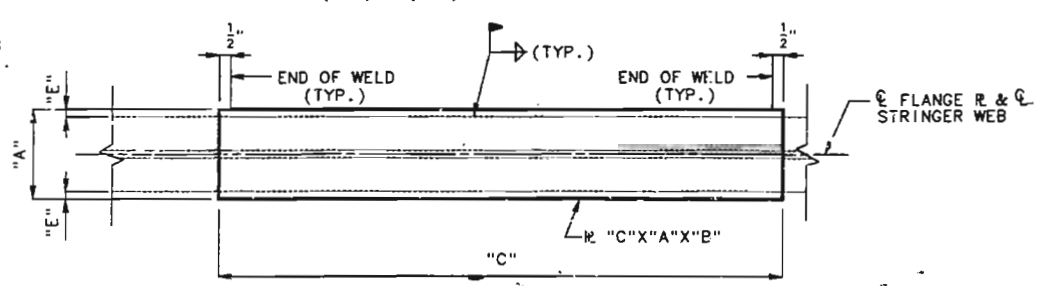
- DESIGN SPECIFICATIONS:
A.A.S.H.T.O. 1989 AND INTERIM 1990.
- DESIGN LOADING:
1993 MISSOURI LEGAL LOADS.
NO FUTURE WEARING SURFACE
- DESIGN UNIT STRESSES:
STRUCTURAL CARBON STEEL FS=20,000 PSI.
- PAINT:
CALCIUM SULFONATE (2 COATS) (SEE SPECIAL PROVISIONS).
- OLD AND NEW WORK:
OUTLINE OF OLD WORK IS INDICATED BY LIGHT DASHED LINES.
HEAVY LINES INDICATE NEW WORK.
- DIMENSIONS:
LONGITUDINAL DIMENSIONS ARE BASED ON THE ORIGINAL DESIGN PLANS.
- TRAFFIC:
MAINTAIN ONE LANE OF TRAFFIC DURING CONSTRUCTION. (SEE ROADWAY TRAFFIC CONTROL PLANS).
- STRINGER SUPPORT:
THE EXISTING STRINGERS SHALL BE RAISED SIMULTANEOUSLY * AT JACKING POINT AND SUPPORTED DURING WELDING OF NEW STEEL PLATES. THE TEMPORARY SUPPORTS MUST BE CAPABLE OF SAFELY SUPPORTING APPROXIMATELY ** TONS PER STRINGER. (SEE SPECIAL PROVISIONS).



TYPICAL ELEVATION OF STRINGER
SPAN (1-2) & (4-5)



SECTION THRU STRINGER



DETAIL OF FLANGE R

ESTIMATED QUANTITIES		
ITEM	LUMP SUM	TOTAL
STRENGTHEN EXISTING STRINGERS		1

STRINGER LOCATION		DIMENSIONS								
		"A"	"B"	"C"	"D"	"E"	"F"	*	**	"G"
SPAN 1-2	EXTERIOR	14"	1"	36'-9"	18'-3"	1 1/4"	20'-0"	9/16"	56	11'-9"
SPAN 1-2	INTERIOR	14"	1"	36'-9"	18'-3"	1 1/4"	20'-0"	9/16"	56	11'-9"
SPAN 4-5	EXTERIOR	14"	1"	36'-9"	20'-0"	1 1/4"	18'-3"	9/16"	56	25'-0"
SPAN 4-5	INTERIOR	14"	1"	36'-9"	20'-0"	1 1/4"	18'-3"	9/16"	56	25'-0"

REPAIRS TO BRIDGE OVER WHITEWATER RIVER

ABOUT 12 MILES S. W. OF JACKSON.
STATE ROAD FROM BURFORDVILLE TO GORDONVILLE.
PROJECT NO. JOS0496 STA. 223+15.00
JOB NO. JOS0498 RTE. 00

CAPE GIRARDEAU COUNTY

DESIGNED: MAR. 1993
DETAILED: JULY 1993
CHECKED: JULY 1993

NOTE: THIS DRAWING IS NOT TO SCALE. FOLLOW DIMENSIONS.

SHEET NO. 1A OF 1

DATE 8/18/93

STD.
STD.
N06901

MISSOURI HIGHWAYS AND TRANSPORTATION COMMISSION
U.I.P & REHAB. (75'-90'-90'-75') CONT. I-BEAM SPANS

SEC/SUR 36 TWP 31N RGE 11E



THIS SHEET HAS BEEN
SIGNED, SEALED AND DATED
ELECTRONICALLY.

DATE PREPARED
1/20/2012

ROUTE
OO MO

DISTRICT
BR 1

COUNTY
CAPE GIRARDEAU

JOB NO.
JOS2256

CONTRACT ID.

PROJECT NO.

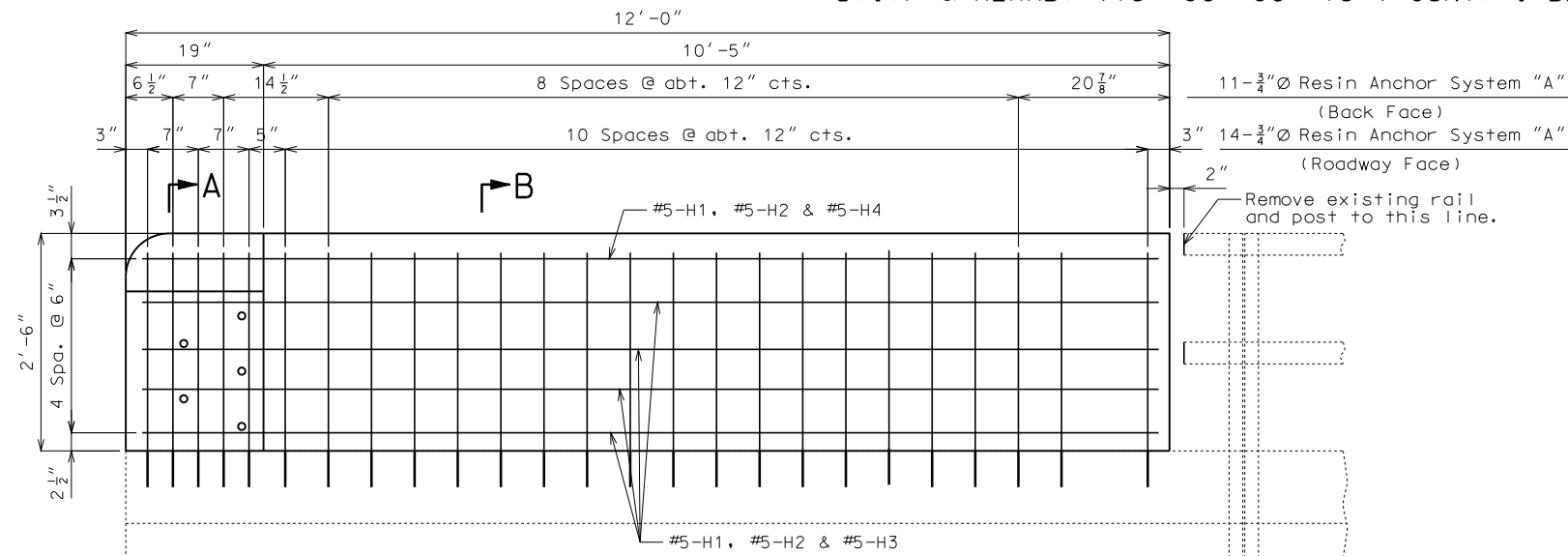
BRIDGE NO.
N06902

DESCRIPTION

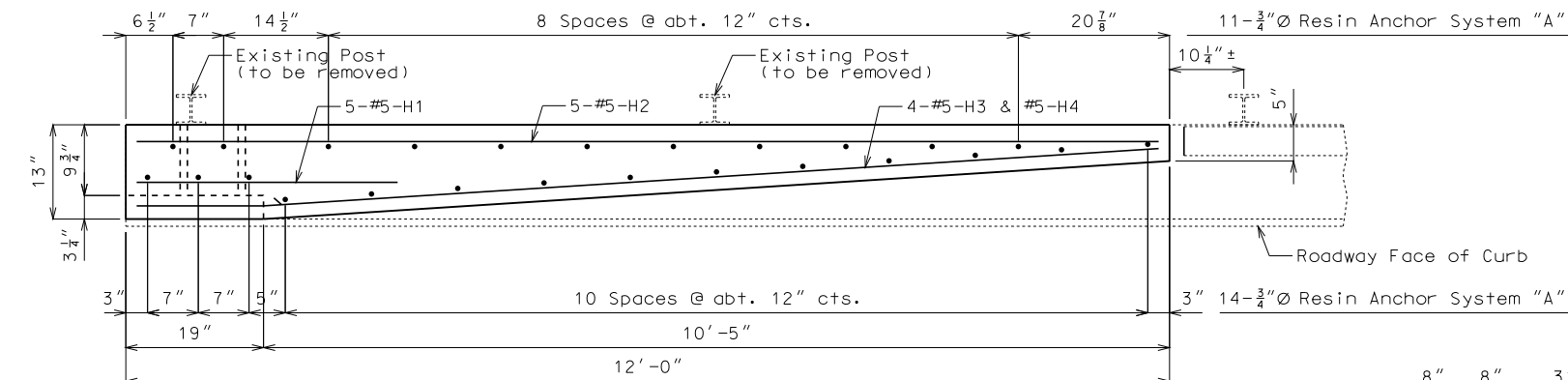
DATE

MISSOURI HIGHWAYS AND TRANSPORTATION COMMISSION

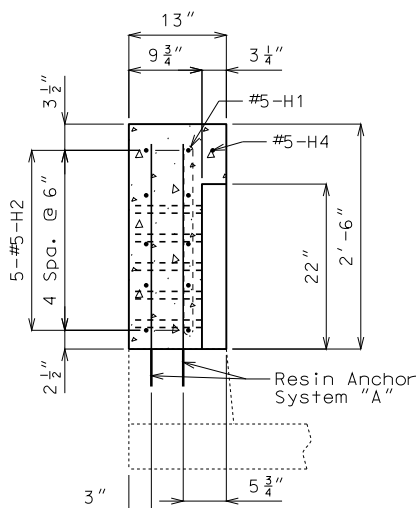
105 WEST CAPITOL
JEFFERSON CITY, MO 65102
1-888-ASK-MODOT (1-888-275-6636)



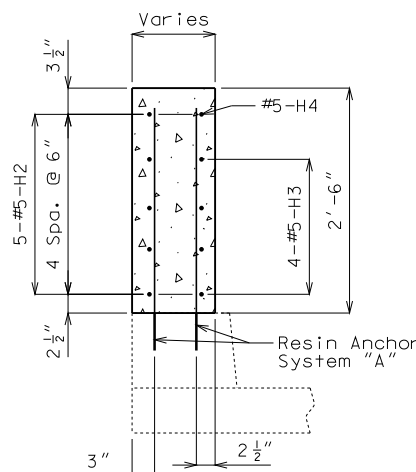
PART ELEVATION



PART PLAN

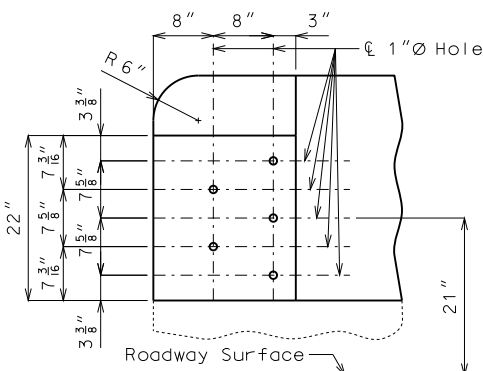


SECTION A-A



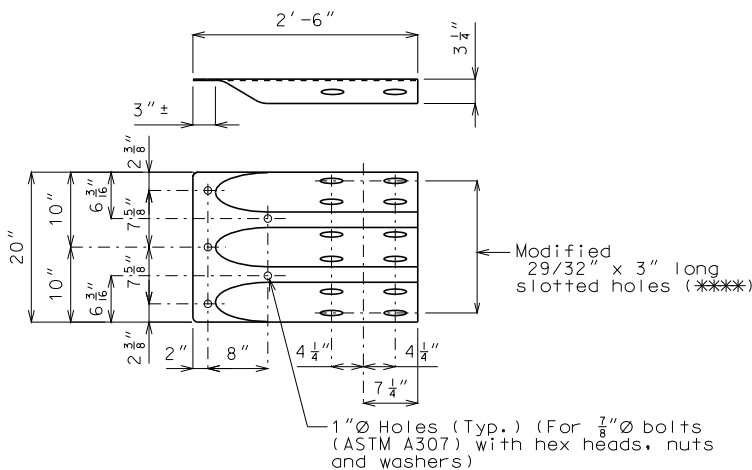
SECTION B-B

DETAILS OF RESIN ANCHOR SYSTEMS
* Manufacturer's recommended embedment length (5" min.)



PART ELEVATION SHOWING BRIDGE ANCHOR SECTION ATTACHMENT

Estimated Quantities		
Item	each	Total
End Post Modification	4	



*** Tighten bolts, back off 1/2 turn and burr threads
*** Allow for sliding between Modified Bridge Anchor Section (Thrie Beam) and End Post

MODIFIED TERMINAL CONNECTION AT ABUTMENTS (ROADWAY ITEM)

GENERAL NOTES:

Design Specifications:
2002 - AASHTO 17th Edition

Design Unit Stresses:
Class B-1 Concrete $f'_c = 4,000$ psi
Reinforcing Steel (Grade 60) $f_y = 60,000$ psi

Reinforcing Steel:
Minimum clearance to reinforcing steel shall be 1-1/2", unless otherwise shown.

Resin Anchors:
The contractor shall use one of the qualified resin anchor systems in accordance with Sec 1039.

The minimum embedment depth in concrete with $f'_c = 4,000$ psi for the resin anchor system shall be that required to meet the minimum ultimate pullout strength in accordance with Sec 1039 but shall not be less than 5".

An epoxy coated #6 Grade 60 reinforcing bar shall be substituted for the 3/4" ϕ threaded rod.

Cost of furnishing and installing the resin anchor system complete-in-place will be considered completely covered by the contract unit price for End Post Modification.

Miscellaneous:
One lane of traffic shall remain open during construction. See Job No. JOS2256 Roadway Plans for traffic control.

All exposed edges of end post shall have either a 1/2" radius or a 3/8" bevel unless otherwise shown.

"Sec" refers to the sections in the standard and supplemental specifications unless specified otherwise.

Outline of old work is indicated by light dashed lines. Heavy lines indicate new work.

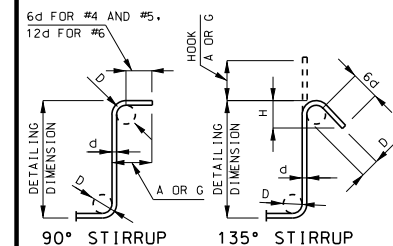
Contractor shall verify all dimensions in field before ordering new material.

Ends of bridge rail at removal points shall be ground smooth. The ends of the rail and any areas of the rail scratched or damaged by the contractor's operations shall be touched up with Gray Epoxy-Mastic Primer in accordance with Sec 1081.

REPAIRS TO BRIDGE: OVER WHITEWATER RIVER
STATE ROAD FROM BURFORDVILLE SOUTHEAST TO ROUTE Z
ABOUT 4.2 MILES S. OF RTE. HH
STA. 223+15.00± (Match Existing)

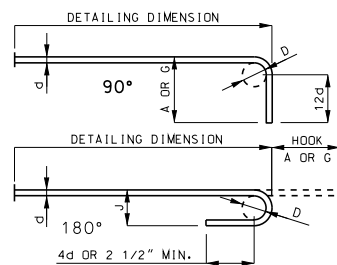
STD. 606.22

BILL OF REINFORCING STEEL

[illegible]

STIRRUP HOOK DIMENSIONS				
GRADES 40 - 50 - 60 KSI				
BAR SIZE	D (IN.)	90° HOOK		135° HOOK
		HOOK A OR G	HOOK A OR G	APPROX. H
#4	2"	4 1/2"	4 1/2"	3"
#5	2 1/2"	6"	5 1/2"	3 3/4"
#6	4 1/2"	12"	8"	4 1/2"

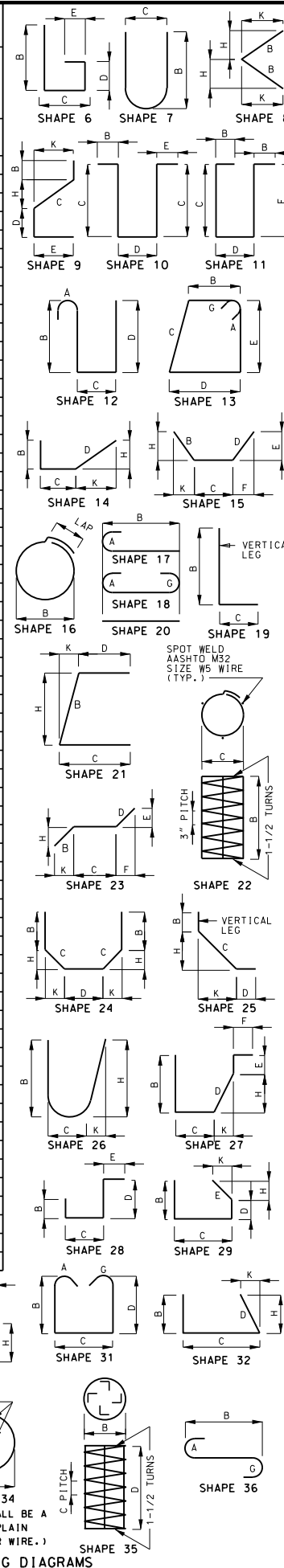
NOTE: UNLESS OTHERWISE NOTED DIAMETER
"D" IS THE SAME FOR ALL BENDS AND HOOKS
ON A BAR.



END HOOK DIMENSIONS					
BAR SIZE	D (IN.)	ALL GRADES			
		180° HOOKS		90° HOOKS	
		A OR G	J	A OR G	J
#3	2 1/4"	5"	3"	6"	
#4	3"	6"	4"	8"	
#5	3 3/4"	7"	5"	10"	
#6	4 1/2"	8"	6"	12"	
#7	5 1/4"	10"	7"	14"	
#8	6"	11"	8"	16"	
#9	9 1/2"	15"	11 3/4"	19"	
#10	10 3/4"	17"	13 1/4"	22"	
#11	12"	19"	14 3/4"	2'-0"	
#14	18 1/4"	2'-3"	21 3/4"	2'-7"	

NOTE:
ALL STANDARD HOOKS AND BENDS OTHER THAN 180 DEGREE ARE TO BE BENT WITH SAME
PROCEDURE AS FOR 90 DEGREE STANDARD HOOKS.
HOOKS AND BENDS SHALL BE IN ACCORDANCE WITH THE PROCEDURES AS SHOWN ON THIS SHEET.
E = EPOXY COATED REINFORCEMENT.
S = STIRRUP.
X = BAR IS INCLUDED IN SUBSTRUCTURE QUANTITIES.
Y = BAR DIMENSIONS VARY IN EQUAL INCREMENTS BETWEEN DIMENSIONS SHOWN ON THIS LINE
AND THE FOLLOWING LINE.
NO. EX. = NUMBER OF BARS OF EACH LENGTH.
NOMINAL LENGTHS ARE BASED ON OUT TO OUT DIMENSIONS SHOWN IN BENDING DIAGRAMS AND
ARE LISTED FOR FABRICATORS USE. (NEAREST INCH)
ACTUAL LENGTHS ARE MEASURED ALONG CENTERLINE BAR TO THE NEAREST INCH.
PAYWEIGHTS ARE BASED ON ACTUAL LENGTHS.
FOUR ANGLE OR CHANNEL SPACERS ARE REQUIRED FOR EACH COLUMN SPIRAL. SPACERS ARE TO
BE PLACED ON INSIDE OF SPIRALS. LENGTH AND WEIGHT OF COLUMN SPIRALS DO NOT INCLUDE
SPLICES OR SPACERS.
REINFORCING STEEL (GRADE 60) FY = 60,000 PSI.

BILL OF REINFORCING STEEL

[illegible]

Detailed Jan. 2012
Checked Jan. 2012

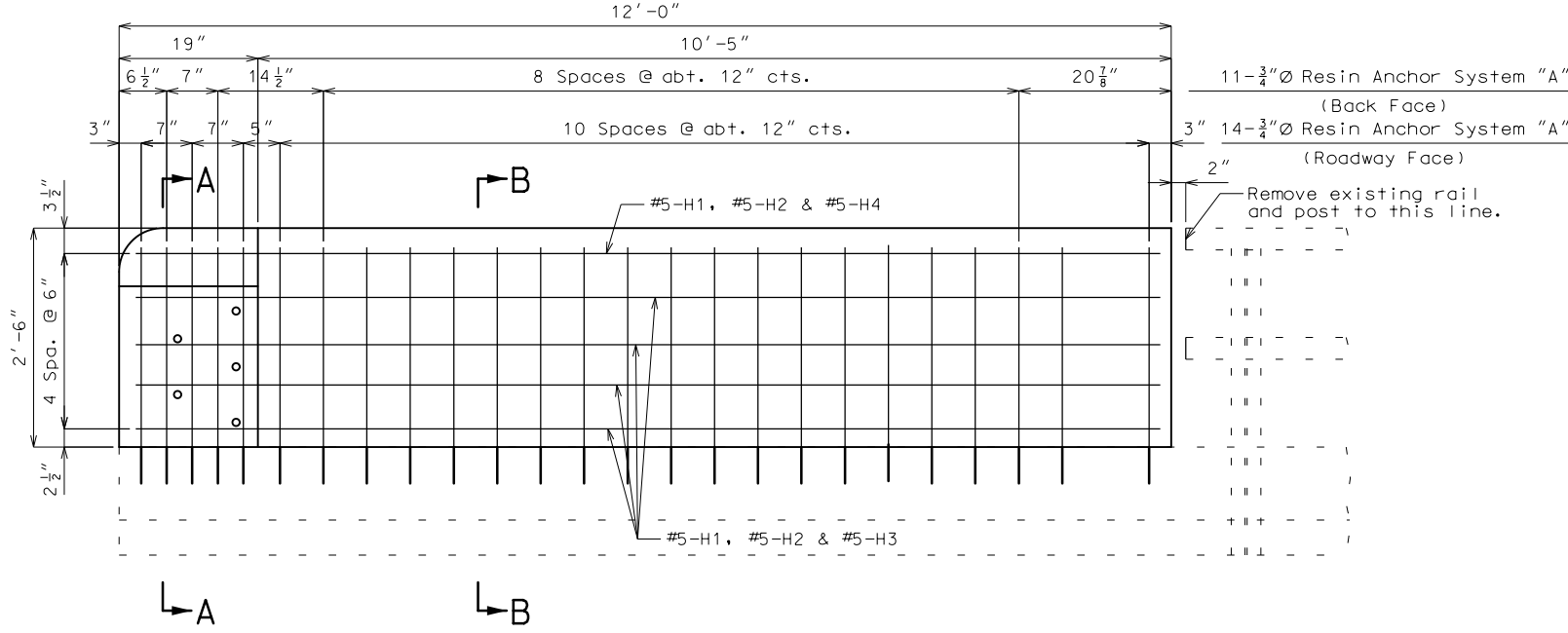
Note: This drawing is not to scale. Follow dimensions.

Sheet No. 2 of 2

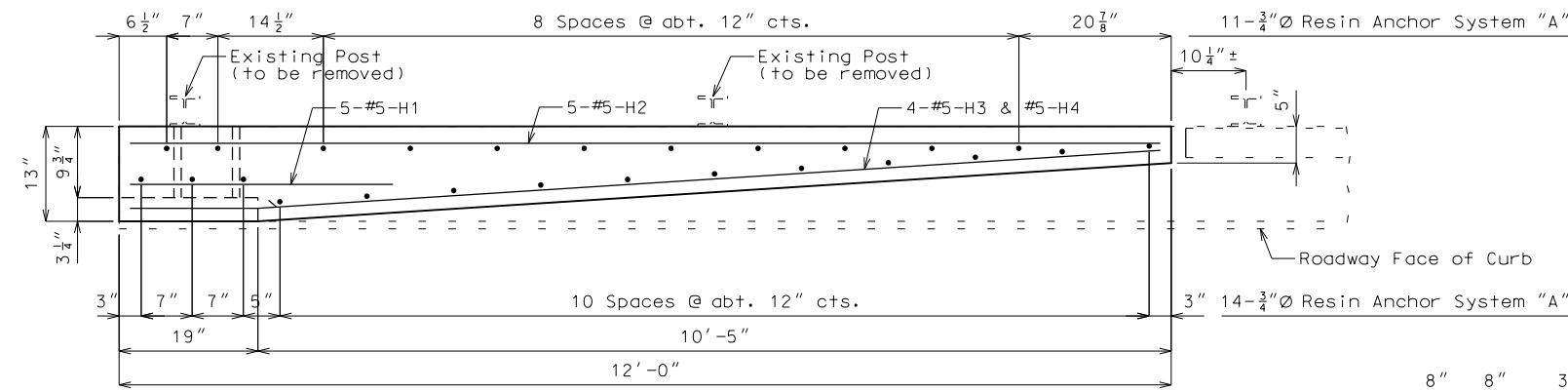
[illegible]

MISSOURI HIGHWAYS AND TRANSPORTATION COMMISSION
U.I.P & REHAB. (75'-90'-90'-75') CONT. I-BEAM SPANS

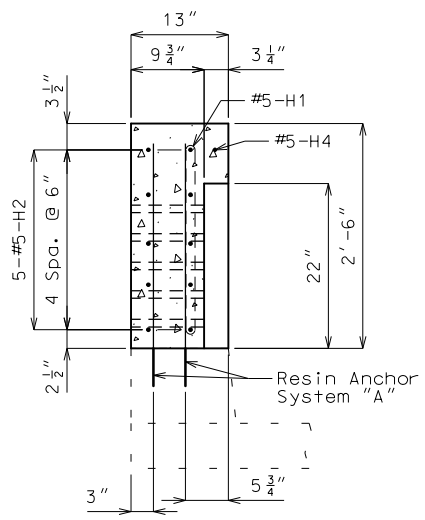
SEC/SUR 36 TWP 31N RGE 11E



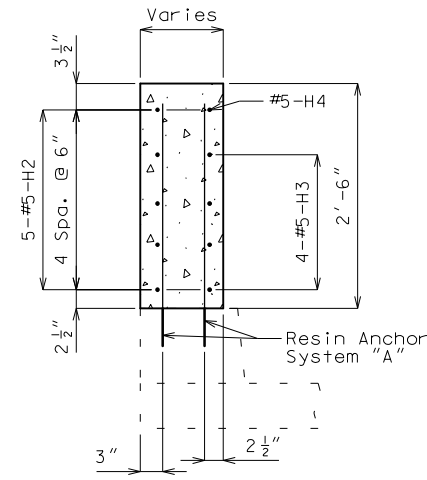
PART ELEVATION



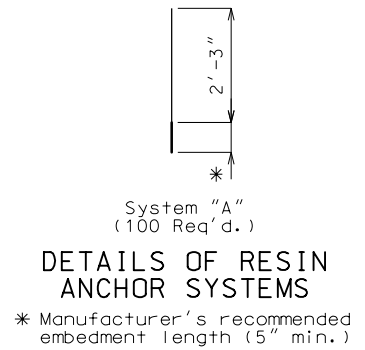
PART PLAN



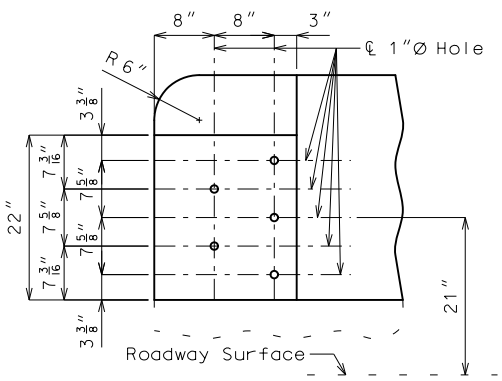
SECTION A-A



SECTION B-B

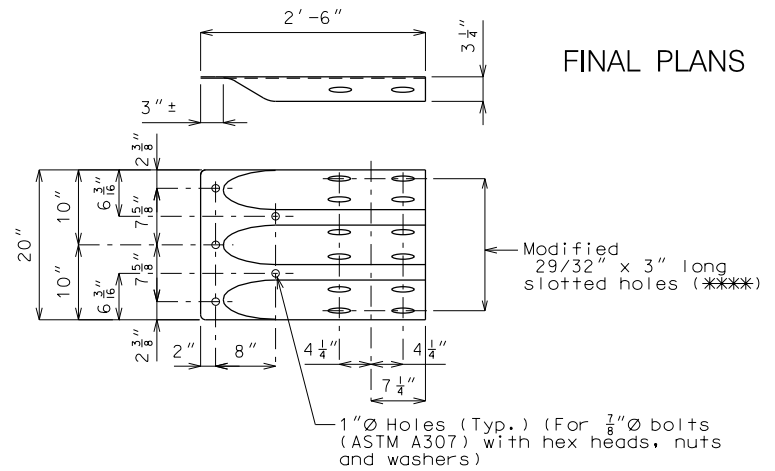


DETAILS OF RESIN ANCHOR SYSTEMS



PART ELEVATION SHOWING BRIDGE ANCHOR SECTION ATTACHMENT

FINAL Quantities		
Item		Total
End Post Modification	each	4



MODIFIED TERMINAL CONNECTION AT ABUTMENTS (ROADWAY ITEM)

GENERAL NOTES:

- Design Specifications:**
2002 - AASHTO 17th Edition
- Design Unit Stresses:**
Class B-1 Concrete $f'_c = 4,000$ psi
Reinforcing Steel (Grade 60) $f_y = 60,000$ psi
- Reinforcing Steel:**
Minimum clearance to reinforcing steel shall be 1-1/2", unless otherwise shown.
- Resin Anchors:**
The contractor shall use one of the qualified resin anchor systems in accordance with Sec 1039.
- The minimum embedment depth in concrete with $f'_c = 4,000$ psi for the resin anchor system shall be that required to meet the minimum ultimate pullout strength in accordance with Sec 1039 but shall not be less than 5".
- An epoxy coated #6 Grade 60 reinforcing bar shall be substituted for the 3/4" Ø threaded rod.
- Cost of furnishing and installing the resin anchor system complete-in-place will be considered completely covered by the contract unit price for End Post Modification.
- Miscellaneous:**
One lane of traffic shall remain open during construction. See Job No. J0S2256 Roadway Plans for traffic control.
- All exposed edges of end post shall have either a 1/2" radius or a 3/8" bevel unless otherwise shown.
- "Sec" refers to the sections in the standard and supplemental specifications unless specified otherwise.
- Outline of old work is indicated by light dashed lines. Heavy lines indicate new work.
- Contractor shall verify all dimensions in field before ordering new material.
- Ends of bridge rail at removal points shall be ground smooth. The ends of the rail and any areas of the rail scratched or damaged by the contractor's operations shall be touched up with Gray Epoxy-Mastic Primer in accordance with Sec 1081.

REPAIRS TO BRIDGE: OVER WHITEWATER RIVER
STATE ROAD FROM BURFORDVILLE SOUTHEAST TO ROUTE Z
ABOUT 4.2 MILES S. OF RTE. HH
STA. 223+15.00± (Match Existing)

STD. 606.22

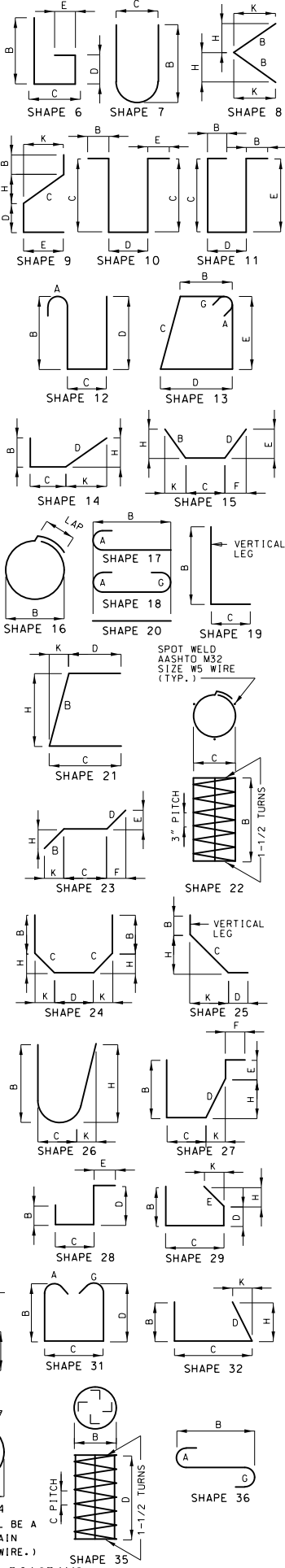
BILL OF REINFORCING STEEL

NO.	REQ'D.	MARK NO.	LOCATION	EPOXY (E)	SHAPE NO.	STIRRUP (S)	SUBSTR. (X)	VARIES (V)	NO. EACH	DIMENSIONS												NOMINAL LENGTH	ACTUAL LENGTH	WEIGHT																																																																																																																																																																																																																																																																																																																																																																																																																																																																																																																																																																																																																																																																																																																																																																																																																																																																																																																																																																																																																																																																																																																																																																																																																																																																																																																																																																																																																																																																															
										B		C		D		E		F		H					K																																																																																																																																																																																																																																																																																																																																																																																																																																																																																																																																																																																																																																																																																																																																																																																																																																																																																																																																																																																																																																																																																																																																																																																																																																																																																																																																																																																																																																																																														
										FT.	IN.	FT.	IN.	FT.	IN.	FT.	IN.	FT.	IN.	FT.	IN.				FT.	IN.	FT.	IN.	LBS.																																																																																																																																																																																																																																																																																																																																																																																																																																																																																																																																																																																																																																																																																																																																																																																																																																																																																																																																																																																																																																																																																																																																																																																																																																																																																																																																																																																																																																																																										
			END POSTS																																																																																																																																																																																																																																																																																																																																																																																																																																																																																																																																																																																																																																																																																																																																																																																																																																																																																																																																																																																																																																																																																																																																																																																																																																																																																																																																																																																																																																																																																																				

BILL OF REINFORCING STEEL

FINAL PLANS

NO.	REQ'D.	MARK NO.	LOCATION	EPOXY (E)	SHAPE NO.	STIRRUP (S)	SUBSTR. (X)	VARIES (V)	NO. EACH	DIMENSIONS														NOMINAL LENGTH	ACTUAL LENGTH	WEIGHT																																																																																																																																																																																																																																																																																																																																																																																																																																																																																																																																																																																																																																																																																																																																																																																																																																																																																																																																																																																																																																																																																																																																																																																																																																																																																																																																																																																																																																																																											
										B		C		D		E		F		H		K																																																																																																																																																																																																																																																																																																																																																																																																																																																																																																																																																																																																																																																																																																																																																																																																																																																																																																																																																																																																																																																																																																																																																																																																																																																																																																																																																																																																																																																																															
										FT.	IN.	FT.	IN.	FT.	IN.	FT.	IN.	FT.	IN.	FT.	IN.	FT.	IN.	FT.	IN.	FT.	IN.	LBS.																																																																																																																																																																																																																																																																																																																																																																																																																																																																																																																																																																																																																																																																																																																																																																																																																																																																																																																																																																																																																																																																																																																																																																																																																																																																																																																																																																																																																																																																									
																																																																																																																																																																																																																																																																																																																																																																																																																																																																																																																																																																																																																																																																																																																																																																																																																																																																																																																																																																																																																																																																																																																																																																																																																																																																																																																																																																																																																																																																																																					</



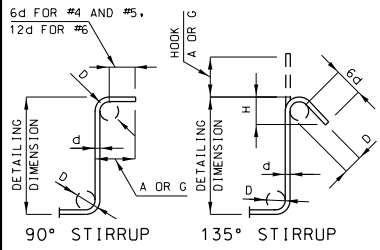
DATE PREPARED

ROUTE 00 STATE MO
DISTRICT BR SHEET NO. 2
COUNTY CAPE GIRARDEAU
JOB NO. J0S2256
CONTRACT ID. 120323-H09
PROJECT NO. FAS-1128(5)
BRIDGE NO. N06902

DESCRIPTION

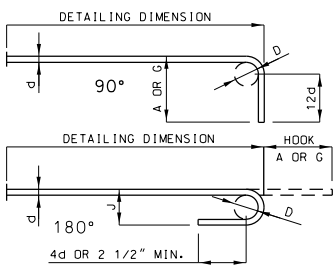
DATE

MISSOURI HIGHWAYS AND TRANSPORTATION COMMISSION



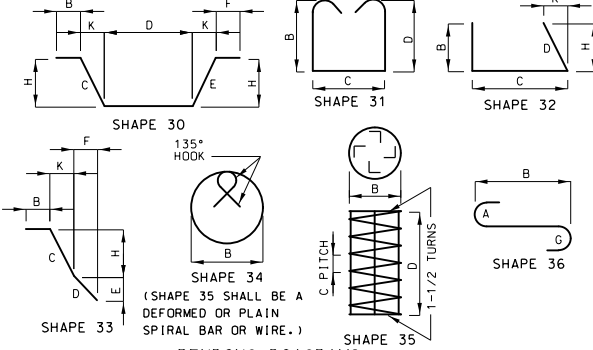
STIRRUP HOOK DIMENSIONS				
GRADES 40 - 50 - 60 KSI				
BAR SIZE	D (IN.)	90° HOOK A OR G	135° HOOK A OR G	APPROX. H
#4	2"	4 1/2"	4 1/2"	3"
#5	2 1/2"	6"	5 1/2"	3 3/4"
#6	4 1/2"	12"	8"	4 1/2"


NOTE: UNLESS OTHERWISE NOTED DIAMETER "D" IS THE SAME FOR ALL BENDS AND HOOKS ON A BAR.





END HOOK DIMENSIONS				
ALL GRADES				
BAR SIZE	D (IN.)	180° HOOKS A OR G	J	90° HOOKS A OR G
#3	2 1/4"	5"	3"	6"
#4	3"	6"	4"	8"
#5	3 3/4"	7"	5"	10"
#6	4 1/2"	8"	6"	12"
#7	5 1/4"	10"	7"	14"
#8	6"	11"	8"	16"
#9	9 1/2"	15"	11 3/4"	19"
#10	10 3/4"	17"	13 1/4"	22"
#11	12"	19"	14 3/4"	2'-0"
#14	18 1/4"	2'-3"	21 3/4"	2'-7"

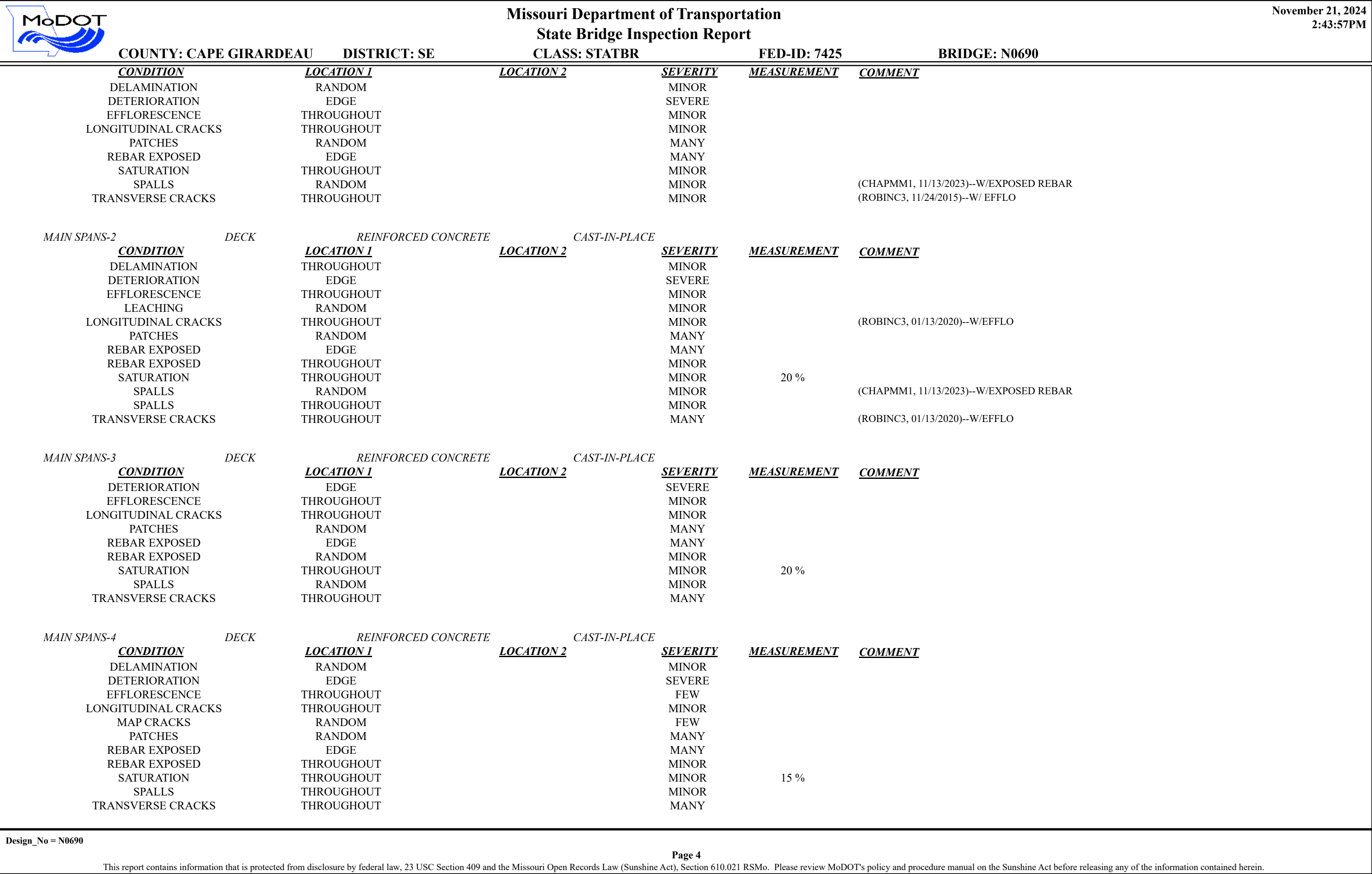
NOTE: ALL STANDARD HOOKS AND BENDS OTHER THAN 180 DEGREE ARE TO BE BENT WITH SAME PROCEDURE AS FOR 90 DEGREE STANDARD HOOKS. HOOKS AND BENDS SHALL BE IN ACCORDANCE WITH THE PROCEDURES AS SHOWN ON THIS SHEET. E = EPOXY COATED REINFORCEMENT. S = STIRRUP. X = BAR IS INCLUDED IN SUBSTRUCTURE QUANTITIES. V = BAR DIMENSIONS VARY IN EQUAL INCREMENTS BETWEEN DIMENSIONS SHOWN ON THIS LINE AND THE FOLLOWING LINE. NO. EA. = NUMBER OF BARS OF EACH LENGTH. NOMINAL LENGTHS ARE BASED ON OUT TO OUT DIMENSIONS SHOWN IN BENDING DIAGRAMS AND ARE LISTED FOR FABRICATORS USE. (NEAREST INCH) ACTUAL LENGTHS ARE MEASURED ALONG CENTERLINE BAR TO THE NEAREST INCH. PAYWEIGHTS ARE BASED ON ACTUAL LENGTHS. FOUR ANGLE OR CHANNEL SPACERS ARE REQUIRED FOR EACH COLUMN SPIRAL. SPACERS ARE TO BE PLACED ON INSIDE OF SPIRALS. LENGTH AND WEIGHT OF COLUMN SPIRALS DO NOT INCLUDE SPLICES OR SPACERS. REINFORCING STEEL (GRADE 60) F_y = 60,000 PSI.

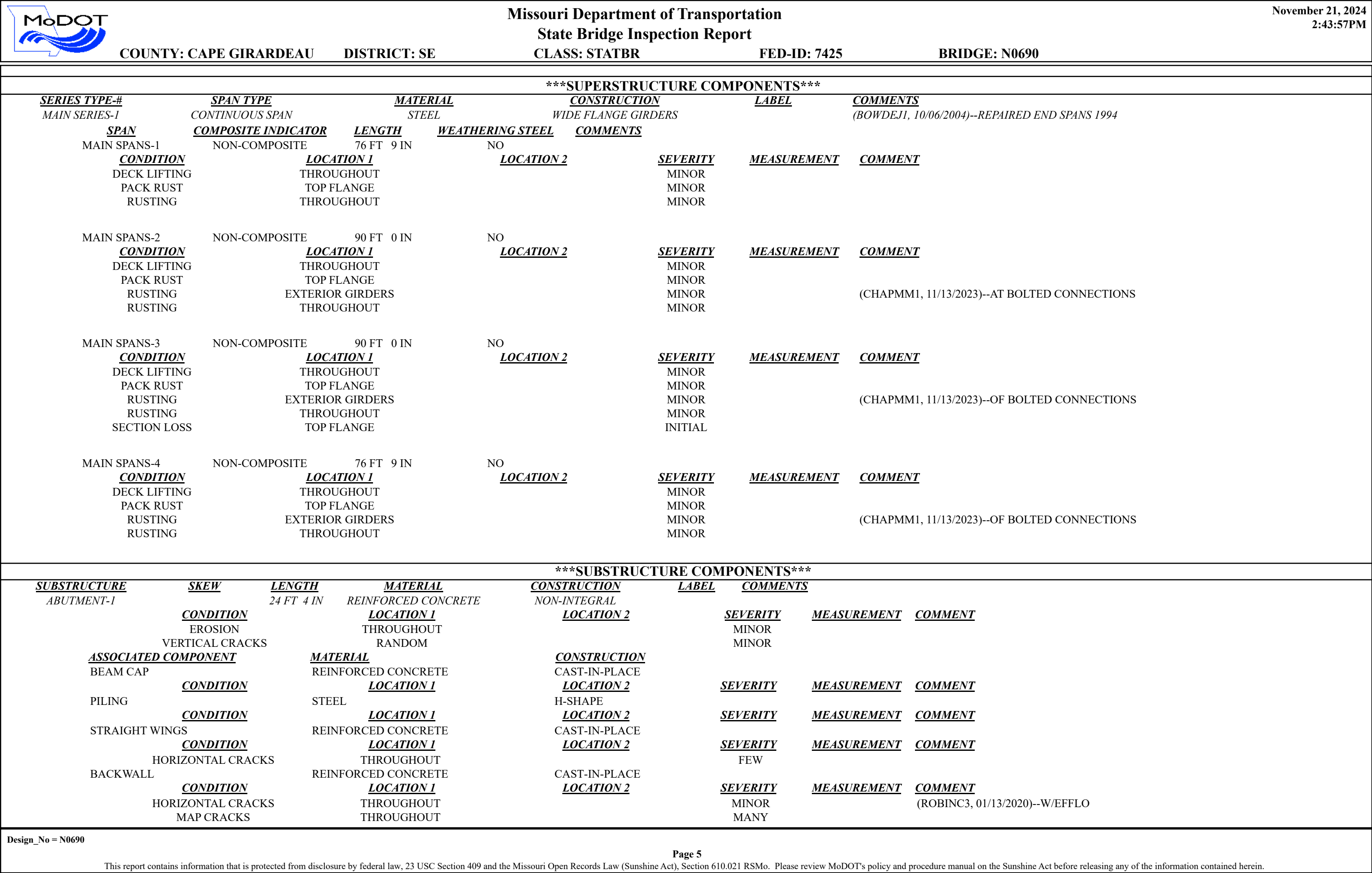


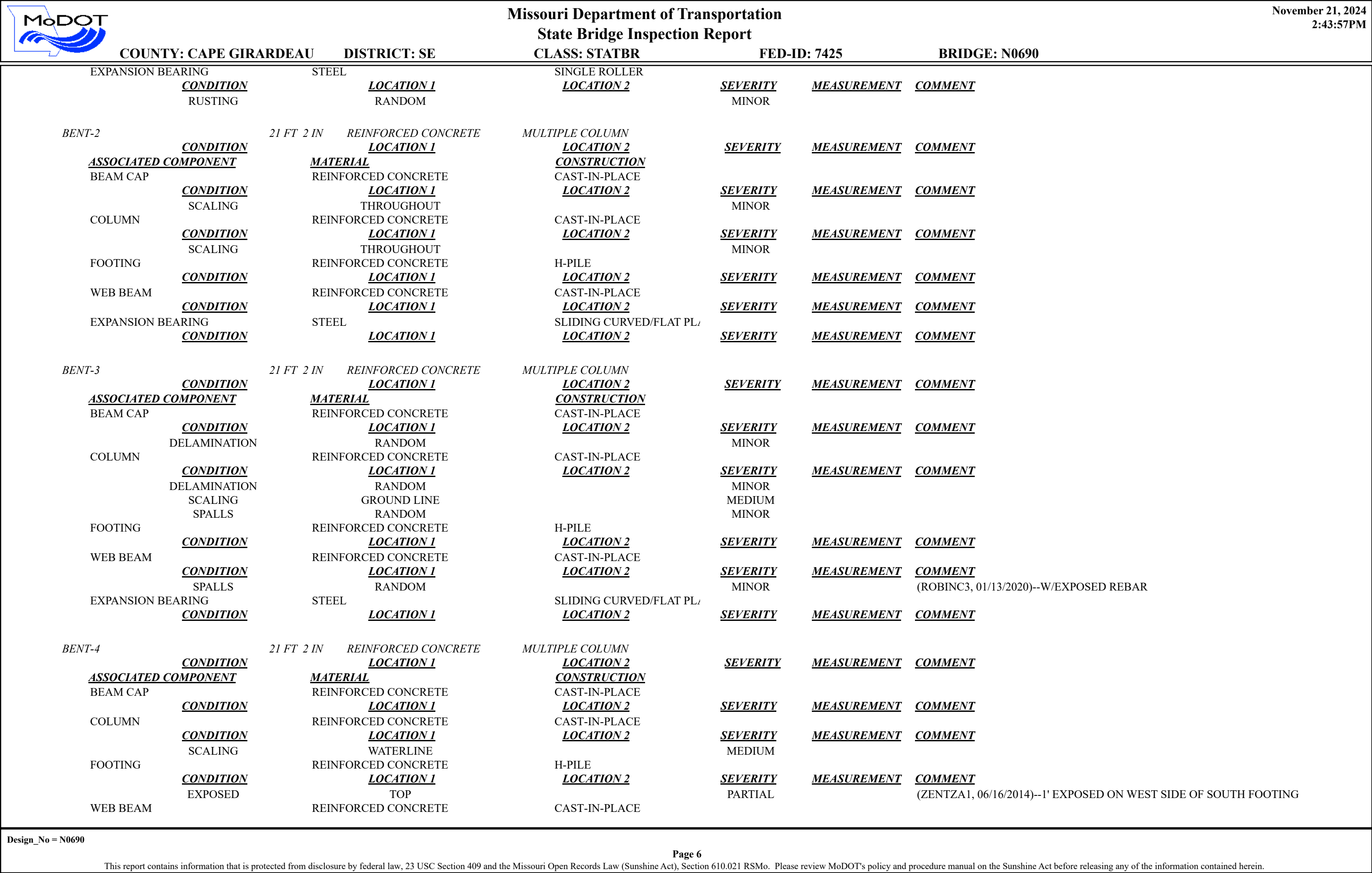
		Missouri Department of Transportation				November 21, 2024	
		State Bridge Inspection Report				2:43:57PM	
COUNTY: CAPE GIRARDEAU		DISTRICT: SE		CLASS: STATBR		FED-ID: 7425	
						BRIDGE: N0690	
GENERAL STRUCTURE INFORMATION						***BRIDGE INSPECTION INFORMATION***	
ROUTE: RTOOE FEATURE: WHITEWATER RVR STATUS: A-OPEN LOG MILE: 4.370 DETOUR: 24.00 MILES NHS: NO BUILT: 1958 REHAB: LOCATION: S 36 T 31 R 11 E LATITUDE: 37 19 16.99 (DMS) LONGITUDE: 89 46 43.40 (DMS)		# SPANS: 4 LANES ON: 2 LANES UNDER: 0 COMPASS DIRECTION: WEST to EAST DIRECTION OF TRAFFIC: 2-WAY TRAF FUNCTIONAL CLASS: RL-MAJOR COLLECTOR NBI OWNER: MODOT NBI MAINTAINED: MODOT MAINTENANCE DISTRICT: SE MAINTENANCE COUNTY: CAPE GIRARDEAU SUB AREA: 7H30		PLACE CODE: 38702 KINDER LENGTH: 334 FT 0 IN MAXIMUM SPAN: 90 FT 0 IN APPROACH ROADWAY: 20 FT 0 IN CURB TO CURB: 20 FT 0 IN OUT TO OUT: 22 FT 4 IN AADT: 1914 AADT YEAR: 2023 AADT TRUCK: 3.9% FUTURE AADT: 2967 FUTURE AADT YEAR: 2043		DATE: 11/04/2024 RESPONSIBILITY: DISTRICT	
						FREQUENCY: 24 CALCULATED INTERVAL**: 12	
						TEAM LEADER: STEVE RIGHTNOWAR ELEMENT: NO	
						INSPECTOR 2: INSPECTOR 4:	
						INSPECTOR 3:	
						** When calculated interval exceeds the frequency, a justification comment per BIRM is required.	
						GENERAL INSPECTION COMMENTS	
FRACTURE CRITICAL INSPECTION INFORMATION				***INDEPTH INSPECTION INFORMATION***			
DATE:		RESPONSIBILITY:		CATEGORY:		DATE:	
FREQUENCY:		CALCULATED INTERVAL**:		NBI:		RESPONSIBILITY:	
TEAM LEADER:		INSPECTOR 3:		METHOD:		CATEGORY:	
INSPECTOR 2:		INSPECTOR 4:				NBI:	
** When calculated interval exceeds the frequency, a justification comment per BIRM is required.				** When calculated interval exceeds the frequency, a justification comment per BIRM is required.			
FRACTURE CRITICAL INSPECTION COMMENTS				INDEPTH INSPECTION COMMENTS			
SPECIAL INSPECTION INFORMATION				***UNDERWATER INSPECTION INFORMATION***			
DATE: 06/06/2023		RESPONSIBILITY: DISTRICT		CATEGORY: CHANNEL CROSS SEC		DATE: 11/04/2024	
FREQUENCY: 24		CALCULATED INTERVAL**: 24		NBI: NO		RESPONSIBILITY: DISTRICT	
TEAM LEADER: JERROD JERNIGAN		INSPECTOR 3:		METHOD: WT TAPE		CATEGORY: DRY	
INSPECTOR 2:		INSPECTOR 4:				NBI: NO	
** When calculated interval exceeds the frequency, a justification comment per BIRM is required.				** When calculated interval exceeds the frequency, a justification comment per BIRM is required.			
SPECIAL INSPECTION COMMENTS				UNDERWATER INSPECTION COMMENTS			
OTHER SPECIAL INSPECTIONS				OTHER UNDERWATER INSPECTIONS			
DATE	FREQUENCY	CATEGORY	NBI	CALCULATED INTERVAL	RESPONSIBILITY	METHOD	DATE
06/01/2022	999	SCOUR ACTION PLAN	NO	25	DISTRICT	VISUAL	FREQUENCY
05/15/2017	999	DAMAGE POST INCIDENT	NO		DISTRICT		CATEGORY
							NBI
							CALCULATED INTERVAL
							RESPONSIBILITY
							METHOD
Design_No = N0690							
Page 1							
This report contains information that is protected from disclosure by federal law, 23 USC Section 409 and the Missouri Open Records Law (Sunshine Act), Section 610.021 RSMo. Please review MoDOT's policy and procedure manual on the Sunshine Act before releasing any of the information contained herein.							

		Missouri Department of Transportation			November 21, 2024	
		State Bridge Inspection Report			2:43:57PM	
COUNTY: CAPE GIRARDEAU		DISTRICT: SE	CLASS: STATBR	FED-ID: 7425	BRIDGE: N0690	
STRUCTURE POSTING						
APPROVED CATEGORY: S-1		NO POSTING REQUIRED				
Ton 1:		Ton 2:		Ton 3:		
COMMENTS:						
FIELD CATEGORY: S-1		NO POSTING REQUIRED				
Ton 1:		Ton 2:		Ton 3:	PROBLEM:	PROBLEM DIRECTION:
COMMENTS:						
GENERAL COMMENTS/MAJOR RATED ITEMS						
GENERAL COMMENTS: (BOWDEJ1, 09/10/2008)--(76'-90'-90'-76') CONT WF GDR SPANS (STRGTHEN ALL GDR'S IN APPRO SPANS ONLY)						
[ITEM 58] DECK: 5-FAIR CONDITION		COMMENTS: (BLALOR1, 11/19/2013)--SEVERE EDGE DETER				
RATING : 12/19/2007						
[ITEM 59] SUPER: 6-SATISFACTORY CONDITION		COMMENTS: (BLALOR1, 11/19/2013)--PK RUST TOP FLG LIFTING DK				
RATING : 11/13/2023		(CHAPMM1, 11/13/2023)--MINOR RUSTING OF SPLICE PLATES ON EXT. GIRDERS				
[ITEM 60] SUB: 5-FAIR CONDITION		COMMENTS: (STEGEC, 01/08/2018)--PIER 4 FOOTING EXPOSED WITH MINOR UNDERMINING OF THE PILE FOOTING IN 5/2017				
RATING : 01/08/2018		(ROBINC3, 11/25/2019)--REPAIRED 2018				
[ITEM 61] BANK/CHANNEL: 5-MAJOR DAMAGE		COMMENTS: (STEGEC, 01/08/2018)--EXPOSED FOOTING AT PIER 4, EAST BANK HAS MAJOR SLOUGHING IN 5/2017				
RATING : 05/18/2001		(ROBINC3, 11/25/2019)--REPAIRED 2018				
[ITEM 113] SCOUR: 3-SCOUR CRITICAL-UNSTABLE		COMMENTS: (CALLAC, 10/10/2002)--ITEM 113 = 3 FROM USGS EVALUATION, SCOUR CAT. = C				
RATING : 10/10/2002		SUBSTANTIAL EXPOSURE FROM COMBINATION OF SCOUR EVENTS				
EVALUATION TYPE :		(BLALOR1, 12/03/2013)--DEEP CHANNEL SCOUR				
[ITEM 71] WATERWAY ADEQUACY: DECK/APPRCH OVERTOP SLIGT		COMMENTS:				
RATING : 05/18/2001						
[ITEM 72] APPRRDWY ALIGNMENT: 6-SATISFACTORY		COMMENTS:				
RATING : 05/18/2001						
RAILING AND APPROACH PAVEMENT COMPONENTS AND RATINGS						
[ITEM 36A] BRIDGE RAILING RATING: DOESNT MEET CURRNT STND-0						
RATING : 02/05/2004		COMMENTS:				
<u>MATERIAL</u>		<u>CONSTRUCTION</u>	<u>DIRECTION</u>	<u>COMMENTS</u>		
REINFORCED CONCRETE		CURB	BOTH			
<u>CONDITION</u>		<u>LOCATION 1</u>	<u>LOCATION 2</u>	<u>SEVERITY</u>	<u>COMMENT</u>	
LONGITUDINAL CRACKS		THROUGHOUT		MINOR		
SPALLS		THROUGHOUT		MINOR		
VERTICAL CRACKS		THROUGHOUT		MINOR		
STEEL		ANGLE-DOUBLE	BOTH			
<u>CONDITION</u>		<u>LOCATION 1</u>	<u>LOCATION 2</u>	<u>SEVERITY</u>	<u>COMMENT</u>	
RUSTING		THROUGHOUT		MINOR		
[ITEM 36B] TRANSITION RAILING RATING: MEETS CURRENT STANDARDS-1						
RATING : 12/03/2013		COMMENTS:				
<u>MATERIAL</u>		<u>CONSTRUCTION</u>	<u>DIRECTION</u>	<u>COMMENTS</u>		
GALVANIZED STEEL		THRIE BEAM TO W-BEAM	ALL			
Design_No = N0690						
Page 2						
This report contains information that is protected from disclosure by federal law, 23 USC Section 409 and the Missouri Open Records Law (Sunshine Act), Section 610.021 RSMo. Please review MoDOT's policy and procedure manual on the Sunshine Act before releasing any of the information contained herein.						

		Missouri Department of Transportation			November 21, 2024	
		State Bridge Inspection Report			2:43:57PM	
COUNTY: CAPE GIRARDEAU		DISTRICT: SE	CLASS: STATBR	FED-ID: 7425	BRIDGE: N0690	
[ITEM 36C] APPROACH RAILING RATING: MEETS CURRENT STANDARDS-1						
RATING : 12/03/2013		COMMENTS:				
<u>MATERIAL</u>	<u>CONSTRUCTION</u>	<u>DIRECTION</u>	<u>COMMENTS</u>			
GALVANIZED STEEL	W-BEAM	ALL				
[ITEM 36D] RAIL END TREATMENT RATING: MEETS CURRENT STANDARDS-1						
RATING : 12/03/2013		COMMENTS:				
<u>MATERIAL</u>	<u>CONSTRUCTION</u>	<u>DIRECTION</u>	<u>COMMENTS</u>			
GALVANIZED STEEL	BREKAWAY SYSTEM	ALL				
APPROACH PAVEMENT: *Overall condition assigned for each approach pavemenet component is shown below.						
<u>MATERIAL</u>	<u>CONSTRUCTION</u>	<u>DIRECTION</u>	<u>CONDITION*</u>	<u>COMMENTS</u>		
ASPHALT	BITUMINOUS MAT	BOTH	GOOD			
DRAINAGE, EXPANSION DEVICES, BANK/SLOPE, AND DECK PROTECTIVE COMPONENTS						
<u>DECK PROTECTIVE COMPONENTS:</u>						
<u>SERIES TYPE-#</u>	<u>COMPONENT</u>	<u>MATERIAL</u>	<u>CONSTRUCTION</u>	<u>THICKNESS</u>	<u>YEAR APPLIED</u>	<u>MANUFACTURE</u>
MAIN SERIES-1	WEARING SURFACE	ASPHALT	BITUMINOUS SEAL COAT	.4 IN	2012	
<u>COMMENT:</u>						<u>OVERALL CONDITION</u>
						GOOD
	DECK PROTECTION	NOTAPPLICABLE	NONE			
<u>COMMENT:</u>						
	MEMBRANE	NOTAPPLICABLE	NONE			
<u>COMMENT:</u>						
	SECONDARY DECK PROTECTION	LIQUID SEALANT	INTERNALLY SEALED		2010	PAVON INDECK
<u>COMMENT:</u>						
<u>DRAINAGE COMPONENTS:</u>						
	<u>COMPONENT</u>	<u>MATERIAL</u>	<u>CONSTRUCTION</u>	<u>DIRECTION</u>	<u>COMMENTS</u>	
	DRAINAGE	REINFORCED CONCRETE	CURB OUTLET			
<u>EXPANSION DEVICE COMPONENTS:</u>						
<u>SUB UNIT-#</u>	<u>SUB LABEL</u>	<u>COMPONENT</u>	<u>MATERIAL</u>	<u>CONSTRUCTION</u>	<u>GAP</u>	<u>YEAR APPLIED</u>
ABUTMENT-1		CLOSED EXPANSION JOINT	STEEL	FLAT PLATE		
<u>COMMENT:</u>	(BLALOR1, 12/03/2013)--COVERED W/ MAT					
						<u>OVERALL CONDITION</u>
	ABUTMENT-5	CLOSED EXPANSION JOINT	STEEL	FLAT PLATE		FAIR
<u>COMMENT:</u>	(BLALOR1, 12/03/2013)--COVERED W/ MAT					
<u>BANK/SLOPE PROTECTION COMPONENTS:</u>						
	<u>COMPONENT</u>	<u>MATERIAL</u>	<u>CONSTRUCTION</u>	<u>DIRECTION</u>	<u>COMMENTS</u>	
	BANK PROTECTION	ROCK	GROUTED	BOTH		
DECK COMPONENTS						
<u>SPAN TYPE-#</u>	<u>COMPONENT</u>	<u>MATERIAL</u>	<u>CONSTRUCTION</u>	<u>COMMENTS</u>		
MAIN SPANS-1	DECK	REINFORCED CONCRETE	CAST-IN-PLACE			
Design_No = N0690						
Page 3						
This report contains information that is protected from disclosure by federal law, 23 USC Section 409 and the Missouri Open Records Law (Sunshine Act), Section 610.021 RSMo. Please review MoDOT's policy and procedure manual on the Sunshine Act before releasing any of the information contained herein.						









Missouri Department of Transportation

State Bridge Inspection Report

November 21, 2024
2:43:57PM

COUNTY: CAPE GIRARDEAU

DISTRICT: SE

CLASS: STATBR

FED-ID: 7425


BRIDGE: N0690


ABUTMENT-5		24 FT 4 IN	REINFORCED CONCRETE	NON-INTEGRAL			
EXPANSION BEARING	STEEL						
CONDITION	LOCATION 1	LOCATION 2	SEVERITY	MEASUREMENT	COMMENT		
SPALLS	RANDOM		MINOR				
EXPANSION BEARING	STEEL	SLIDING CURVED/FLAT PL					
CONDITION	LOCATION 1	LOCATION 2	SEVERITY	MEASUREMENT	COMMENT		
ABUTMENT-5	24 FT 4 IN	REINFORCED CONCRETE	NON-INTEGRAL				
CONDITION	LOCATION 1	LOCATION 2	SEVERITY	MEASUREMENT	COMMENT		
ASSOCIATED COMPONENT	MATERIAL	CONSTRUCTION					
BEAM CAP	REINFORCED CONCRETE	CAST-IN-PLACE					
CONDITION	LOCATION 1	LOCATION 2	SEVERITY	MEASUREMENT	COMMENT		
REBAR EXPOSED	RANDOM		MINOR				
SPALLS	RANDOM		MINOR				
VERTICAL CRACKS	RANDOM		MINOR				
PILING	STEEL	H-SHAPE					
CONDITION	LOCATION 1	LOCATION 2	SEVERITY	MEASUREMENT	COMMENT		
STRAIGHT WINGS	REINFORCED CONCRETE	CAST-IN-PLACE					
CONDITION	LOCATION 1	LOCATION 2	SEVERITY	MEASUREMENT	COMMENT		
HORIZONTAL CRACKS	THROUGHOUT		OPEN				
SPALLS	RANDOM		MINOR			(CHAPMM1, 11/13/2023)--3/4" X 6' LONG	
BACKWALL	REINFORCED CONCRETE	CAST-IN-PLACE					
CONDITION	LOCATION 1	LOCATION 2	SEVERITY	MEASUREMENT	COMMENT		
HORIZONTAL CRACKS	THROUGHOUT		MINOR				
MAP CRACKS	THROUGHOUT		MEDIUM				
SPALLS	THROUGHOUT		MINOR			(ROBINC3, 01/13/2020)--W/EXPOSED REBAR	
EXPANSION BEARING	STEEL	SINGLE ROLLER					
CONDITION	LOCATION 1	LOCATION 2	SEVERITY	MEASUREMENT	COMMENT		
PACK RUST	THROUGHOUT		MINOR				
RUSTING	THROUGHOUT		MINOR				

OVER/UNDER ROUTES CLEARANCE INFORMATION

CLEARANCES OVER DECK

****NOTE:** Vertical clearances for permitting purposes are taken as 2 inches less than the actual field measured clearance.

		<div>Missouri Department of Transportation</div> <div>State Bridge Inspection Report</div>				<div>November 21, 2024</div> <div>2:43:57PM</div>																																											
COUNTY: CAPE GIRARDEAU		DISTRICT: SE		CLASS: STATBR		FED-ID: 7425		BRIDGE: N0690																																									
<div><div>CLEARANCES UNDER BRIDGE</div><div>**NOTE: Vertical clearances for permitting purposes are taken as 2 inches less than the actual field measured clearance.</div><table><thead><tr><th>RECORD #</th><th>ROUTE</th><th># LANES</th><th>DIRECTION OF TRAFFIC</th><th>RIGHT LATERAL CLEARANCE</th><th>LEFT LATERAL CLEARANCE</th><th>UR-ID</th></tr></thead><tbody><tr><td>VERTICAL CLEARANCE TYPE**</td><td>VALUE</td><td>DIRECTION</td><td>DATE</td><td>COMMENT</td><td></td><td></td></tr></tbody></table></div>										RECORD #	ROUTE	# LANES	DIRECTION OF TRAFFIC	RIGHT LATERAL CLEARANCE	LEFT LATERAL CLEARANCE	UR-ID	VERTICAL CLEARANCE TYPE**	VALUE	DIRECTION	DATE	COMMENT																												
RECORD #	ROUTE	# LANES	DIRECTION OF TRAFFIC	RIGHT LATERAL CLEARANCE	LEFT LATERAL CLEARANCE	UR-ID																																											
VERTICAL CLEARANCE TYPE**	VALUE	DIRECTION	DATE	COMMENT																																													
STRUCTURE PAINT INFORMATION																																																	
<table><tr><td>CONDITION:</td><td>FAIR</td><td>RUST AMOUNT :</td><td>STEEL TONS : 111</td></tr><tr><td colspan="2"><u>ORIGINAL PAINT</u></td><td colspan="2"><u>CONTRACT REPAINT</u></td><td colspan="2"><u>DEPARTMENT REPAINT</u></td></tr><tr><td>PAINT TYPE :</td><td></td><td>PAINT TYPE :</td><td></td><td>PAINT TYPE : S SYSTEM</td><td>MANUFACTURE :ARMOR SHIELD</td></tr><tr><td>NAME :</td><td></td><td>NAME :</td><td></td><td>NAME : CAL SULPH/LEAD PAINT</td><td>SURFACE PREP :HAND CLEANED</td></tr><tr><td>PAINT COLOR :</td><td></td><td>PAINT COLOR :</td><td></td><td>PAINT COLOR : GRAY</td><td></td></tr><tr><td>PAINT YEAR :</td><td></td><td>PAINT YEAR :</td><td></td><td>PAINT YEAR : 2003</td><td></td></tr><tr><td>MILS :</td><td></td><td>MILS :</td><td></td><td>MILS : 13</td><td></td></tr></table>										CONDITION:	FAIR	RUST AMOUNT :	STEEL TONS : 111	<u>ORIGINAL PAINT</u>		<u>CONTRACT REPAINT</u>		<u>DEPARTMENT REPAINT</u>		PAINT TYPE :		PAINT TYPE :		PAINT TYPE : S SYSTEM	MANUFACTURE :ARMOR SHIELD	NAME :		NAME :		NAME : CAL SULPH/LEAD PAINT	SURFACE PREP :HAND CLEANED	PAINT COLOR :		PAINT COLOR :		PAINT COLOR : GRAY		PAINT YEAR :		PAINT YEAR :		PAINT YEAR : 2003		MILS :		MILS :		MILS : 13	
CONDITION:	FAIR	RUST AMOUNT :	STEEL TONS : 111																																														
<u>ORIGINAL PAINT</u>		<u>CONTRACT REPAINT</u>		<u>DEPARTMENT REPAINT</u>																																													
PAINT TYPE :		PAINT TYPE :		PAINT TYPE : S SYSTEM	MANUFACTURE :ARMOR SHIELD																																												
NAME :		NAME :		NAME : CAL SULPH/LEAD PAINT	SURFACE PREP :HAND CLEANED																																												
PAINT COLOR :		PAINT COLOR :		PAINT COLOR : GRAY																																													
PAINT YEAR :		PAINT YEAR :		PAINT YEAR : 2003																																													
MILS :		MILS :		MILS : 13																																													
REQUESTED WORK ITEMS																																																	
GENERAL WORK COMMENTS:																																																	
<table><thead><tr><th>RESPONSIBILITY</th><th>LOCATION</th><th>ITEM</th><th>CATEGORY</th><th>PRIORITY</th><th>DATE</th><th>WORK ITEM COMMENT</th></tr></thead><tbody></tbody></table>										RESPONSIBILITY	LOCATION	ITEM	CATEGORY	PRIORITY	DATE	WORK ITEM COMMENT																																	
RESPONSIBILITY	LOCATION	ITEM	CATEGORY	PRIORITY	DATE	WORK ITEM COMMENT																																											
UTILITY ATTACHMENTS																																																	
<table><thead><tr><th>UTILITY</th><th>OWNER</th><th>METHOD</th><th>MEASUREMENT TYPE</th><th>VALUE</th><th>NUMBER</th><th>UTILITY ATTACHMENT COMMENT</th></tr></thead><tbody></tbody></table>										UTILITY	OWNER	METHOD	MEASUREMENT TYPE	VALUE	NUMBER	UTILITY ATTACHMENT COMMENT																																	
UTILITY	OWNER	METHOD	MEASUREMENT TYPE	VALUE	NUMBER	UTILITY ATTACHMENT COMMENT																																											
PROGRAM NOTES INFORMATION																																																	
<table><thead><tr><th>YEAR</th><th>PROJECT #</th><th>MONTH LET</th><th>YEAR LET</th><th>ITEMS</th><th>COMMENT</th></tr></thead><tbody><tr><td>2025</td><td>SE0030</td><td>1</td><td>2025</td><td></td><td></td></tr></tbody></table>										YEAR	PROJECT #	MONTH LET	YEAR LET	ITEMS	COMMENT	2025	SE0030	1	2025																														
YEAR	PROJECT #	MONTH LET	YEAR LET	ITEMS	COMMENT																																												
2025	SE0030	1	2025																																														
<div>Design_No = N0690</div> <div>Page 8</div> <div>This report contains information that is protected from disclosure by federal law, 23 USC Section 409 and the Missouri Open Records Law (Sunshine Act), Section 610.021 RSMo. Please review MoDOT's policy and procedure manual on the Sunshine Act before releasing any of the information contained herein.</div>																																																	

			Missouri Department of Transportation		November 21, 2024	
			State Bridge Inspection Report		2:43:57PM	
COUNTY: CAPE GIRARDEAU			DISTRICT: SE	CLASS: STATBR	FED-ID: 7425	BRIDGE: N0690
COMPUTER GENERATED RATINGS AND DEFICIENCY ITEMS				***ADVANCED SIGN INFORMATION***		
NOTE: The items listed in this section are updated whenever computer edits are ran on a structure after the inspection updates have been entered in to TMS.				SIGN #		
				SIGN TYPE		
				PROBLEM		
				PROBLEM DIRECTION		
<u>Rated Item</u>						
<u>Rating</u>						
<u>Rating Date</u>						
[Item 67] Structure Evaluation Rating:				5-BETTER THAN MINIMUM		
[Item 68] Deck Geometry Rating:				2-BASICALLY INTOLRBLE REQ		
[Item 69] Underclearance:				N-NOT APPLICABLE		
Sufficiency Rating:				45.0%		
Deficiency:				FUNCTIONAL		
Funding Eligibility:				FULL		
Estimated New Structure Length:				364 FT.		
Estimated Structure Cost:				\$2,329,236		
Estimated Total Project Cost:				\$3,493,854		
Year of Cost Estimate:				2024		
NOTE: The above structure length and cost estimates are computer generated using algorithms in the TMS system. These algorithms are generalized to use NBI items to come up with a new structure length and width to calculate a new area which is taken times a representative cost per square foot. The actual structure size and cost may vary significantly from these numbers once site specific engineering is done.						
				OUTFALL INSPECTION INFORMATION		
				# OUTFALLS: 1		
				INSPECTOR: ZACHARY LEE		
				STATUS: PASS		
				DATE: 11/08/2023		
				NOTES:		



Missouri Department of Transportation
Bridge Inventory and Inspection System
Structural Inventory & Appraisal Sheet

November 21, 2024
2:42:40pm

COUNTY : CAPE GIRARDEAU BRIDGE : N0690 2 REVIEW STATUS : APPROVED NBI STATUS : T
RECORD TYPE : ROUTE CARRIED 'ON' STRUCT RUN DATE : 11/8/2024 SUBMITTAL YEAR : 2024

GENERAL STRUCTURE INFORMATION			ROUTE DESIGNATION INFORMATION		
1	State	MISSOURI	5A	Record Type	ROUTE CARRIED 'ON' STRUCT
2	District	SE	5B	Route Signing Prefix	MO
3	County	CAPE GIRARDEAU	5C	Designated Level of Service	MAINLINE
8	Federal ID No.	7425	5D	Route Number	00000
27	Year Built	1958	5E	Directional Suffix	NOT APPLICABLE
106	Year Reconstructed	0	7	Facility Carried	RT OO E
42A	Type of Service On	HIGHWAY	12	Base Hwy. Network	NO
21	Structure Maintenance	STATE HIGHWAY AGENCY	13A	LRS Inventory Route No.	
22	Structure Owner	STATE HIGHWAY AGENCY	13B	Subroute No.	
33	Br. Median Code	NO MEDIAN	20	Toll Status	ON FREE ROAD
37	Historical Significance	NOT ELIGIBLE FOR NR OF HP	26	Functional Classification	07-RURAL MAJOR COLLECTOR
101	Parallel Struc Desg	NONE EXISTS	28A	Lanes on Structure	02
103	Temporary Structure	NOT TEMPORARY	100	STRAHNET Designation	RTE NOT A DEFENSE HWY
112	NBIS Bridge Length	YES	104	National Highway System	NOT ON NHS
			105	Federal Lands Highway	NOT APPLICABLE
			110	Designated Nat. Network	NO
STRUCTURE LOCATION INFORMATION			STRUCTURE TRAFFIC INFORMATION		
4	Place	KINDER	29	AADT	1914
	Code	38702	30	AADT Year	2023
9	Location	S 36 T 31 N R 11 E	102	Direction of Traffic	2-WAY TRAFFIC
11	Milepoint	4.40 miles	109	AADT Truck Percent	4%
16	Latitude	37 D 19 M 17 S	114	Future AADT	2967
17	Longitude	89 D 46 M 43 S	115	Future AADT Year	2043
UNDERRECORD INFORMATION			STRUCTURE GEOMETRIC INFORMATION		
6	Features Intersected	WHITEWATER RVR	10	Inventory Rte. Vert. Clear	99 Ft. 99 In.
42B	Type of Service Under	WATERWAY	19	By pass Detour Length	24.38 miles
28B	Lanes Under Structure	00	32	Approach Roadway Width	20 Ft. 0 In.
54A	Vert. Clearance Ref.	N/A	34	Skew	0.00 Degrees
54B	Vert. Clearance	0 Ft. 0 In.	35	Struct. Flared	NO
55A	Rt. Lat Clear Ref.	N/A	47	Total Horiz. Clear	20 Ft. 0 In.
55B	Rt. Lat Clearance	0 Ft. 0 In.	48	Maximum Span Length	89 Ft. 11 In.
56	Left Lat Clearance	0 Ft. 0 In.	49	Structure Length	333 Ft. 12 In.
38	Navigation Control	PERMIT NOT REQ	50A	Left Curb/Sidewalk Width	0 Ft. 0 In.
39	Nav Vertical Clear	0 Ft. 0 In.	50B	Right Curb/Sidewalk Width	0 Ft. 0 In.
40	Nav Horizontal Clear	0 Ft. 0 In.	51	Curb to Curb Br. Width	20 Ft. 0 In.
111	Nav. Pier Protection		52	Deck Width (Out-Out)	22 Ft. 4 In.
116	Nav. Cl. Vert. Clear		53	Vert. Clearance Over Deck	99 Ft. 99 In.

Design_No = N0690 and Inventory_Appraisal_Submittal_Year = 2024



Missouri Department of Transportation
Bridge Inventory and Inspection System
Structural Inventory & Appraisal Sheet

November 21, 2024
2:42:40pm

COUNTY : CAPE GIRARDEAU BRIDGE : N0690 2 REVIEW STATUS : APPROVED NBI STATUS : T
RECORD TYPE : ROUTE CARRIED 'ON' STRUCT RUN DATE : 11/8/2024 SUBMITTAL YEAR : 2024

LOAD RATING AND POSTING INFORMATION			MATERIAL/CONSTRUCTION INFORMATION		
31	Design Load	H 10	43A	Main Struc. Mat type	STEEL CONTINUOUS
41	Structure Status	OPEN NO RESTRICTIONS	43B	Main struc Constr. Type	STRINGER/MULTIBEAM - GRD
63	Oper. Rating Meth.	LOAD FACTOR	45	# of Main Spans	4
64	Operating Rating	35 Tons.	44A	Appr Struc. Mat type	000
65	Inventory Rating Meth	LOAD FACTOR	44B	Appr Struc. Cnstr. type	000
66	Inventory Rating	21 Tons.	46	# of Approach Span	0
70	Bridge Posting Code	=>LEGAL LOADS	107	Deck Mat/Constr.	1 CONCRETE CIP
PROPOSED IMPROVEMENT INFORMATION			108A	Wear Surf Mat/Constr.	6 BITUMINOUS
Sufficiency Rating 45.0 Percent			108B	Membrane Mat/Constr.	0 NONE
Deficiency Rating FUNCTIONAL			108C	Deck Protect Mat/Constr.	0 NONE
Funding Eligibility FULL			CONDITION RATING INFORMATION		
75A	Proposed Work	REPLACEMENT SUBSTND LOAD	58	Deck Cond. Rating	5
75B	Work Done By	Contract	59	Superstructure Cond. Rating	6
76	New Struc Length	364 Ft. 2 In.	60	Substructure Cond. Rating	5
94	Struc Improve Cost	\$ 2,329,000	61	Channel /Channel Protection Cond. Rating	5
95	Roadway Improve Cost	\$ 233,000	62	Culvert Cond. Rating	N
96	Total Project Cost	\$ 3,494,000	INSPECTION INFORMATION		
97	Year of Cost Estimates	2024	90	Gen. Insp Date	11 / 24
APPRAISAL RATING INFORMATION			91	Gen. Insp. Frequency	24 Months
36A	Br. Rail App. Rating	DOES NOT MEET ACCEPT STND	92A	Frac. Critical Inspection	N Months
36B	Transition Rail App. Rating	MEETS ACCEPTBLE STND	93A	Frac. Critical Insp. Date	
36C	Approach Rail App. Rating	MEETS ACCEPTBLE STND	92B	Underwater Inspection	N Months
36D	Rail End Treat. App. Rating	MEETS ACCEPTBLE STND	93B	Underwater Insp. Date	
67	Struc Eval App. Rating	5	92C	Special Inspection	N Months
68	Deck Geometry App. Rating	2	93C	Special Inspection Date	
69	Underclearance App. Rating	N	BORDER BRIDGE INFORMATION		
71	Waterway Adeq. App. Rating	6	98	Neighboring State Code	
72	Approach Road App. Rating	6	98B	Neighboring State % Respon	
113	Scour Assess App. Rating	3	99	Neighboring State Struc. No.	
APPROVED POSTING INFORMATION			FIELD POSTING INFORMATION		
Approved Posting Category S-1			Field Posting Category S-1		
Ton1 Ton2 Ton3			Ton1 Ton2 Ton3		
Tonnage Values for Posting Sign			Tonnage Values for Posting Sign		
General Text for Posting Sign			General Text for Posting Sign		
NO POSTING REQUIRED			NO POSTING REQUIRED		

Design_No = N0690 and Inventory_Appraisal_Submittal_Year = 2024