



Bridge Replacement and Interchange Improvement Project at Routes E/Y over I-70, in Jonesburg in Montgomery Co.



Project Summary

The Missouri Department of Transportation (MoDOT), working with its consultant Jacobs Engineering Group, is preparing for a bridge replacement and interchange improvement project at Routes E/Y, over Interstate 70 in Jonesburg in Montgomery County.

Project Purpose and Need

The Routes E/Y interchange, located in the City of Jonesburg, is currently a standard diamond configuration with stop-controlled intersections at the ramp terminals and outer roads. The existing bridge over I-70, built in 1961, is 26' wide with no shoulders and is scheduled for replacement due to its condition.

Project Goals

Interchange improvements at this location include:

- Replacing the Routes E/Y bridge in the existing location
- A new 44' wide bridge consisting of 12' driving lanes and 10' shoulders
- Interchange improvements to accommodate the proposed I-70 template with the addition of a third lane and improved bridge clearance and span lengths



Intersections and business access south of the bridge will remain in the current locations.

Over the course of the project, motorists can expect various traffic impacts, including temporary route closures and detours.

To avoid any detour conflicts with nearby projects, this project is scheduled to begin after the completion of the Routes A/B bridge replacement and interchange improvement project, near Pendleton in Warren County.

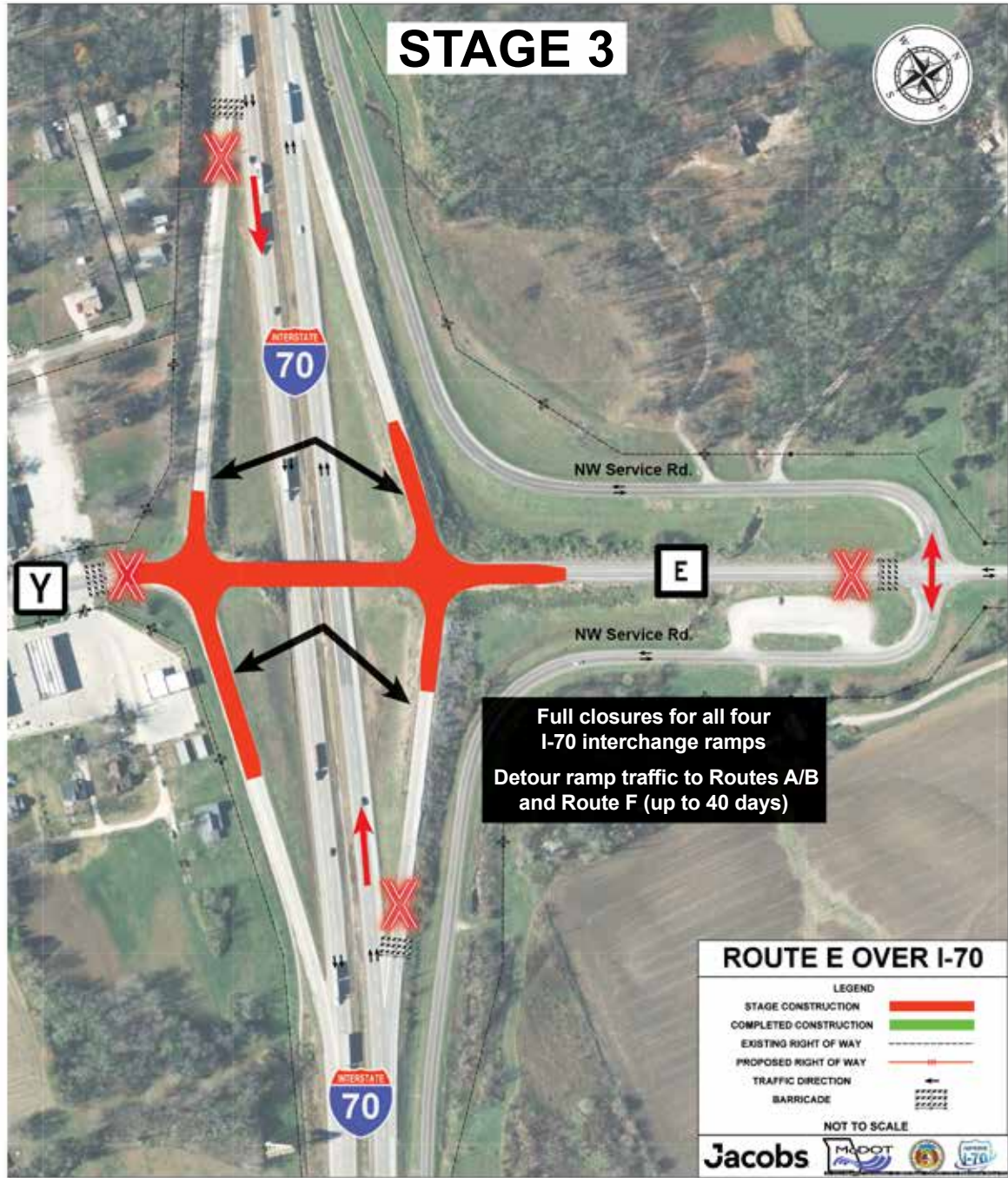
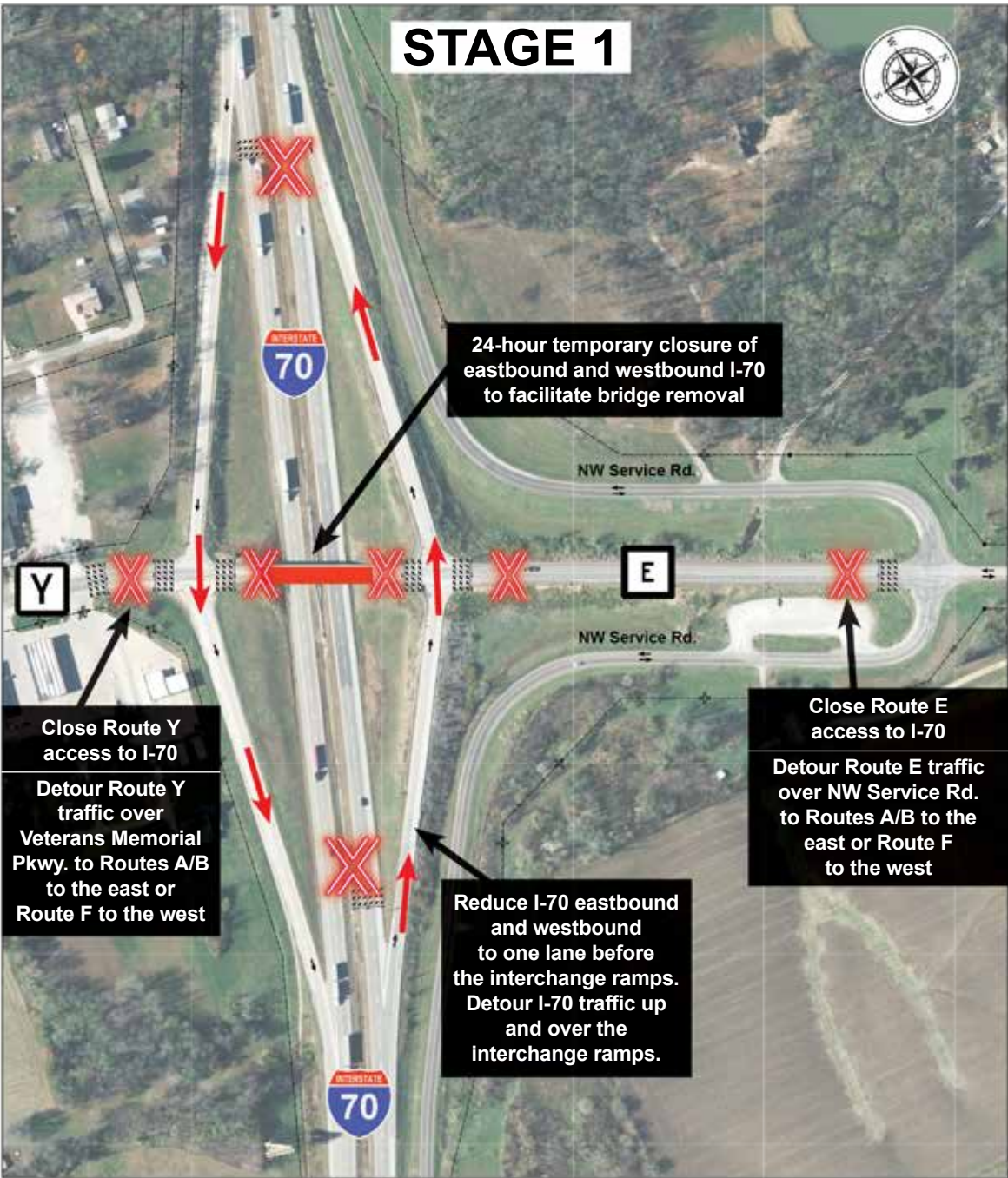
Visit the project website at <https://www.modot.org/route-e-and-route-y-bridge-replacement-over-interstate-70-montgomery> to view display materials, submit comments and learn more about the project.



Stages of Construction: 1-3

Bridge Replacement and Interchange Improvement Project
at Routes E/Y over I-70, in Jonesburg in Montgomery Co.

LEGEND	
STAGE CONSTRUCTION	
COMPLETED CONSTRUCTION	
EXISTING RIGHT OF WAY	
PROPOSED RIGHT OF WAY	
TRAFFIC DIRECTION	
BARRICADE	



Stage 1

Demolish Existing Bridge

- 24-hour temporary closure of eastbound and westbound I-70 to facilitate bridge removal
- Reduce I-70 Eastbound and Westbound to one lane before the interchange ramps. Detour I-70 traffic up and over the interchange ramps.
- Close Routes E/Y access to I-70
- Detour Routes E/Y traffic over Veterans Memorial Pkwy. or NW Service Rd. to Routes A/B to the east or Route F to the west

Stage 2

Begin Bridge Construction

- Open traffic on I-70 in both directions
- Begin bridge construction
- Partial shoulder closure along I-70 for bridge construction
- Interchange ramps open to traffic
- Detour Routes E/Y traffic over Veterans Memorial Pkwy. or NW Service Rd. to Routes A/B to the east or Route F to the west

Stage 3



Bridge and Ramp Construction

- Maintain traffic on I-70 in both directions
- Full closure of all 4 interchange ramps
- Detour ramp traffic to Routes A/B and Route F (up to 40 days)



Project Schedule


Public Meeting	February 3, 2025
Letting	February 2025
Under Contract	Spring 2025
Under Construction	2026
Project Completion	Winter 2026



modot.org/improveI70

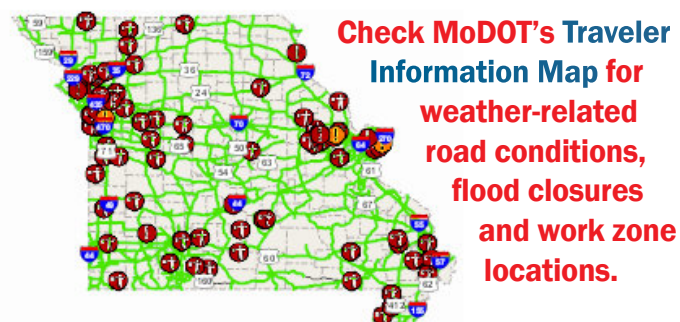
Stay Up-to-Date on I-70 Projects in your Area!

Scan the QR code for more information on the Improve I-70 program or specifically the Warrenton to Wentzville project.



modot.org/improveI70/warrentonwentzville

Traveler Information Map



Check MoDOT's Traveler Information Map for weather-related road conditions, flood closures and work zone locations.



Missouri Department of Transportation
1-888 ASK MODOT (275-6636)
www.modot.org/northeast



Frequently Asked Questions

Q: How much does the project cost?

A: Approximately \$4 million

Q: What are the anticipated impacts?

A: Various traffic impacts will be in place as the project progresses. MoDOT will make every reasonable effort to reduce delays due to construction. Customers can anticipate temporary traffic impacts throughout the project. More information regarding traffic impacts will be shared through news releases and social media for each stage of construction as details become available.

Q: How will construction affect local businesses?

A: MoDOT is committed to ensuring that businesses and patrons near the project limits maintain access throughout the duration of the project.

Q: How can I stay updated about the project?

A: Stay updated on news about roadwork in your area by signing up for emails at [eUpdates](mailto:updates@modot.org) at MoDOT.org

Q: Who can I contact if I have further questions?

A: Questions about the project may be directed to MoDOT's Project Manager or Area Engineer listed below:

Project Contacts



Kimberly Trainor, P.E.

East Project Director
Improve I-70

kimberly.trainor@modot.mo.gov
(573) 231-2786



Jeff Niemeyer

Area Engineer
Northeast District

jeffrey.niemeyer@modot.mo.gov
(573) 808-3562



To stay updated on the progress of this project, sign up for email and text alerts at <https://modotweb.modot.mo.gov/eUpdatesPublic/Account/Login?ReturnUrl=/eUpdatesPublic>. For more information, contact MoDOT's Customer Service Center toll-free at 1-888-ASK-MoDOT (275-6636).