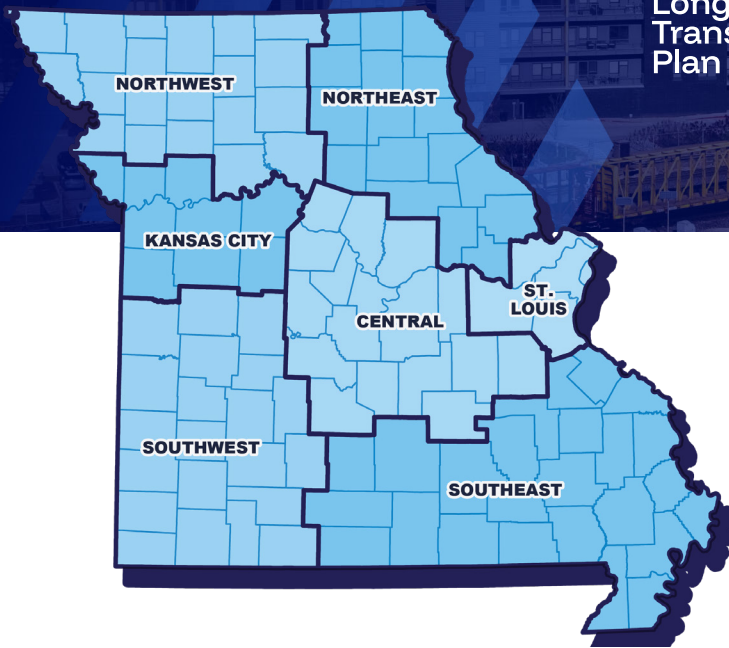




Long-Range
Transportation
Plan



State
Freight & Rail
Plan



The Missouri Department of Transportation (MoDOT) is in the process of updating its current Long-Range Transportation Plan (LRTP) and State Freight and Rail Plan (SFRP). MoDOT is required to develop, adopt, and implement a LRTP and a SFRP as outlined in federal regulations.

What Is the LRTP?

- » A policy-driven document that ensures compliance with state and federal regulations while guiding the development of Missouri's transportation system
- » A roadmap for the state's transportation network through 2050, building on MoDOT's 2018 LRTP
- » A document that addresses emerging trends and evolving needs that impact the entire transportation system

Coordination of the LRTP Update

MoDOT is adopting a unique approach by simultaneously developing the LRTP and SFRP. This process ensures a coordinated and well-informed development process for shaping the future of transportation. The LRTP development process is divided into five phases:

PHASE 1



Visioning
& Goal Setting



PHASE 2



Multimodal
Needs Assessment



PHASE 3



Scenario
Planning



PHASE 4



Cost Feasibility
& Implementation



PHASE 5



Plan
Adoption

Get Involved

MoDOT recognizes that public involvement in the planning process is vital to understanding specific transportation issues and concerns.

MoDOT is committed to an extensive public outreach program to ensure that proposed transportation policies and strategies reflect the needs of Missouri's citizens and stakeholders.

To make your voice heard,
scan the QR code and take
our transportation survey.



www.modot.org/lrtp-sfrp/get-involved

What Is the SFRP?

- » A strategic document that outlines the vision, goals, and priorities of Missouri’s freight and passenger rail systems
- » A comprehensive assessment of existing conditions and provides short- and long-term goals to improve and enhance the freight and rail infrastructure

Coordination of the SFRP Update

MoDOT’s approach on developing the LRTP and SFRP will ensure a coordinated and informed development process for Missouri’s transportation future. The SFRP process development is divided into four phases:

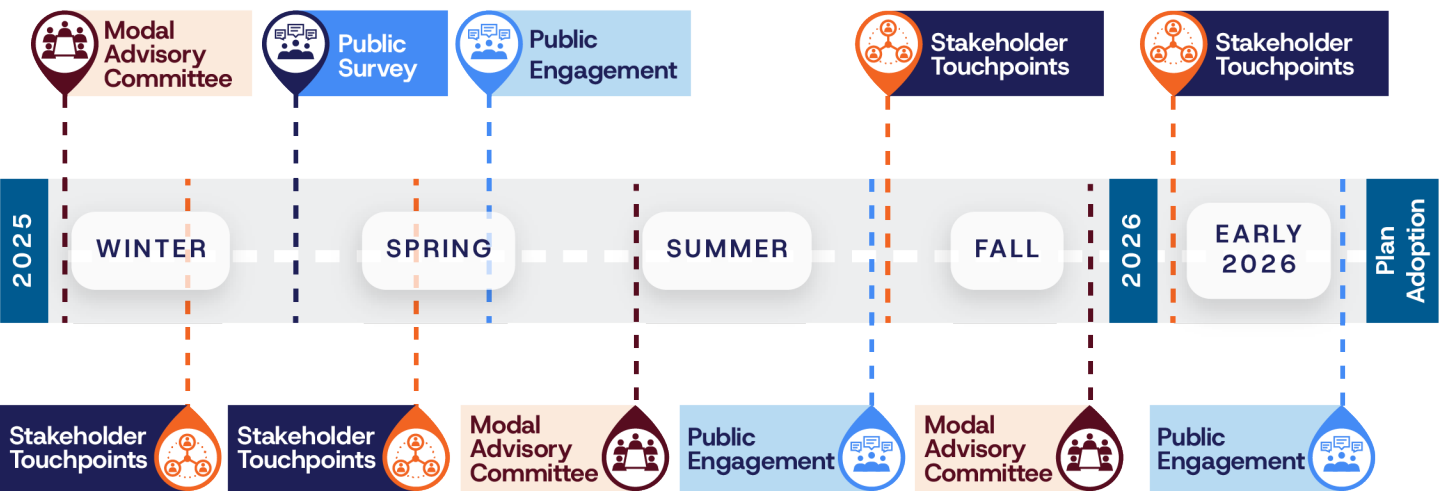


What Will the SFRP Include?

The SFRP will address several topics related to Missouri’s freight and rail transportation including:

- » Updated economic Impact analysis for public ports and Missouri River Runner passenger rail
- » Truck Parking Analysis
- » Identification of emerging trends and opportunities in freight movement
- » Operational evaluation of the freight and rail transportation system
- » Identification of critical supply chains for Missouri’s economy
- » Development of Missouri’s freight story

Anticipated LRTP & SFRP Engagement Schedule



Based on calendar year. Subject to change.

