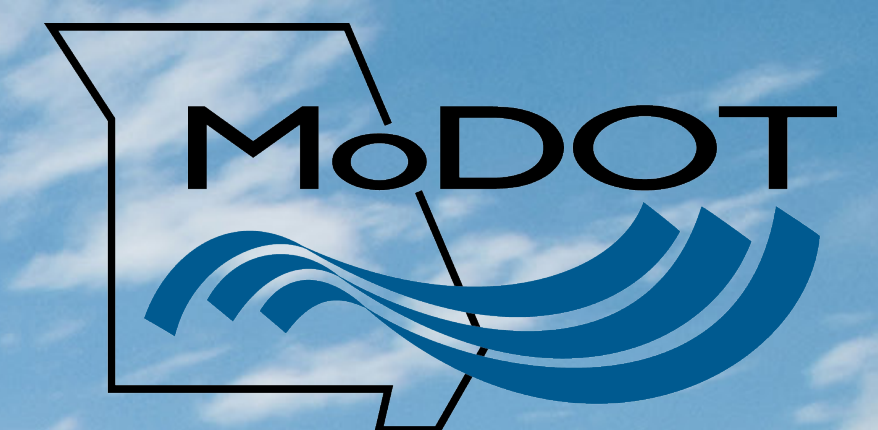


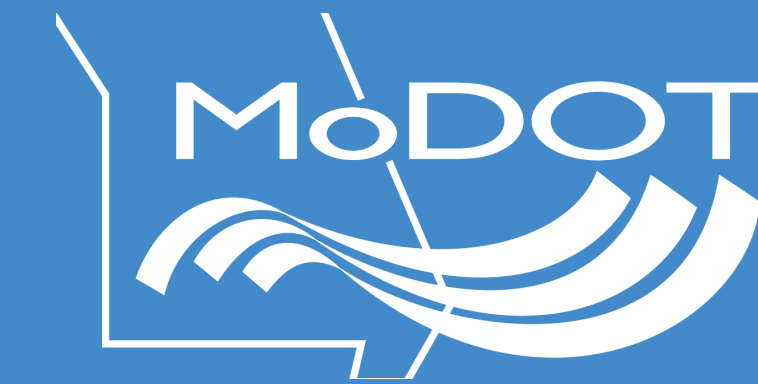
WELCOME TO THE CHESTER BRIDGE COMMUNITY BRIEFING


CHESTER
— BRIDGE —

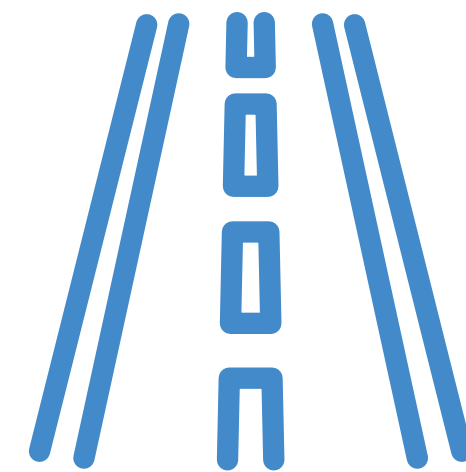
JUNE 23, 2022



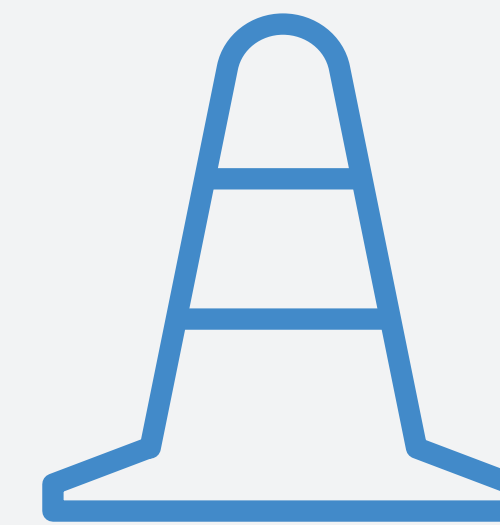
CHESTER BRIDGE DESIGN-BUILD PROJECT GOALS



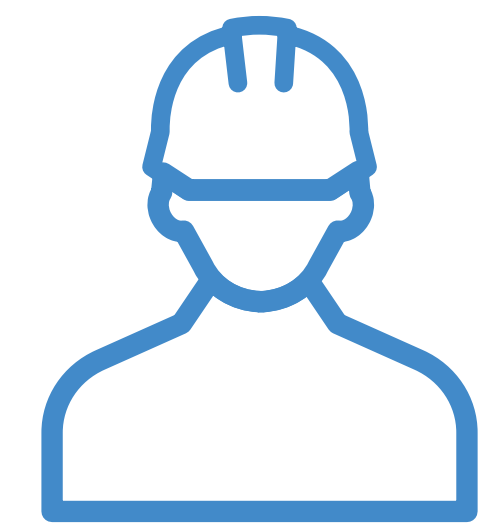
Replace both structures within the project budget using durable 100-year, low maintenance structure(s).



Provide a safe and reliable transportation solution for all modes of transportation.



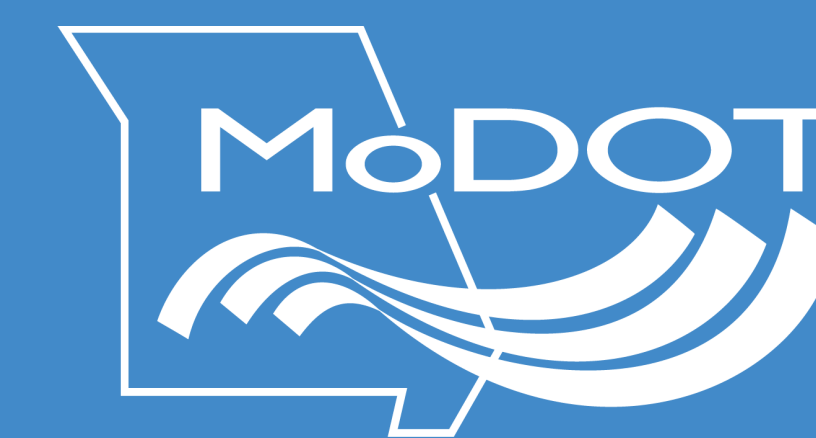
Complete the project no later than December 1, 2026 with the least impacts to all modes of transportation.



Deliver the project safely while utilizing a diverse workforce.

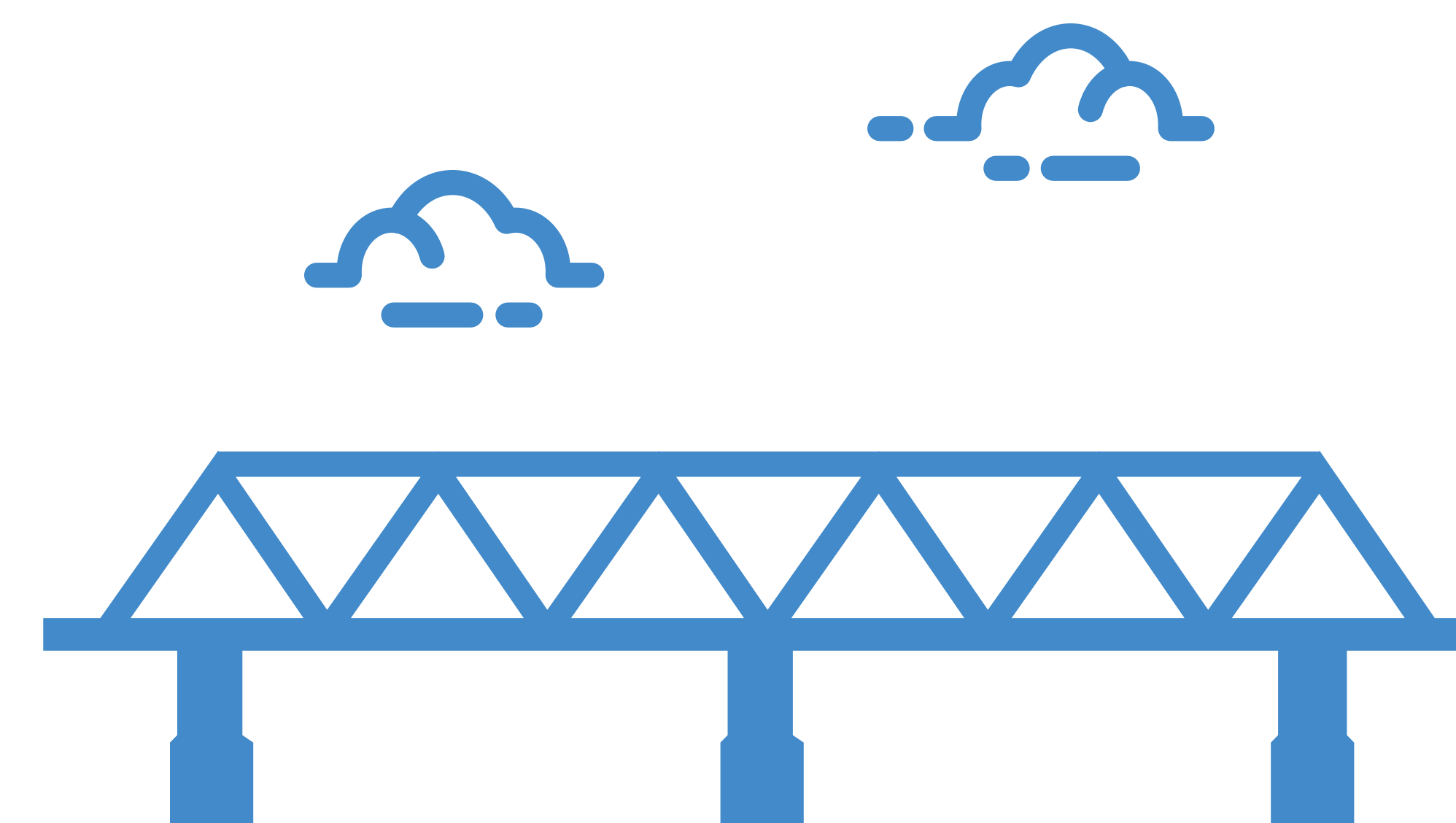
CHESTER BRIDGE

SCHEDULE

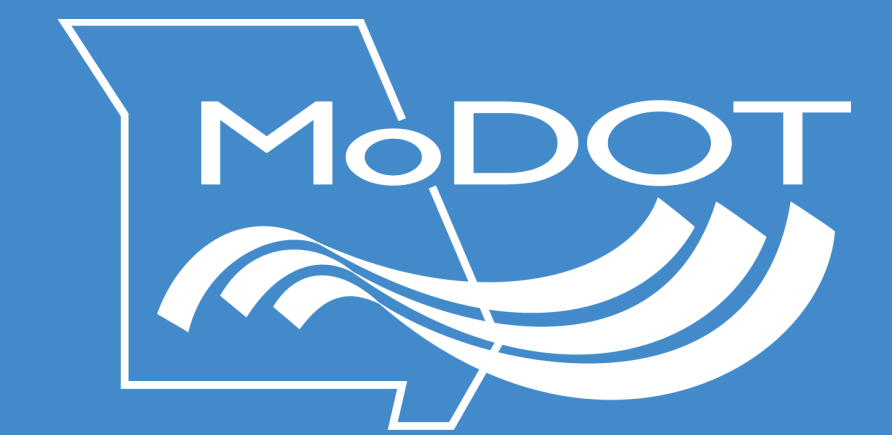


WHAT IS DESIGN-BUILD?

Design-Build is a delivery method that allows MoDOT to hire one contracting team to design and construct a project. Unlike traditional design-bid-build, this allows the design and construction to happen almost simultaneously. Design-Build has been shown to save significant time and money.

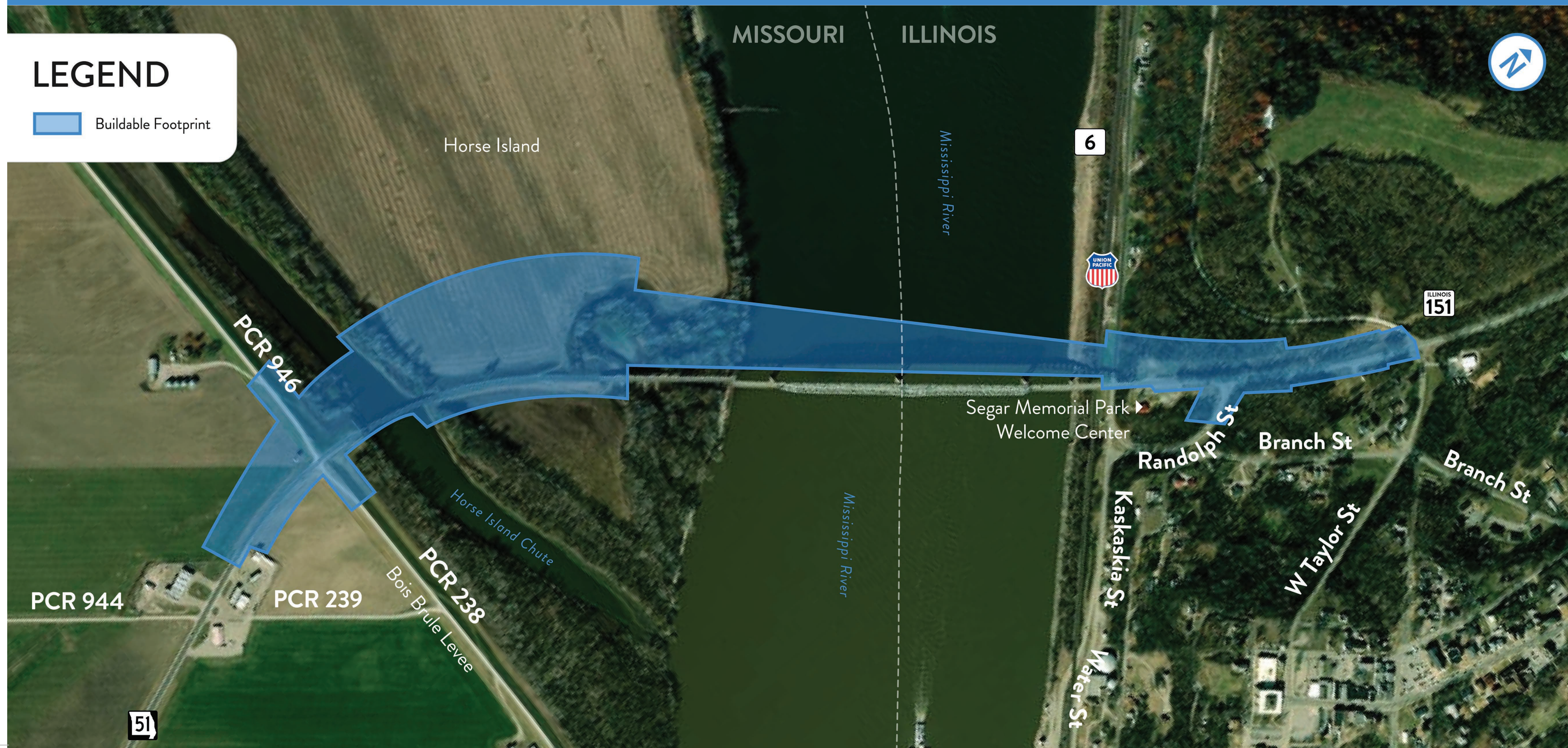


LIKELY PROJECT AREA

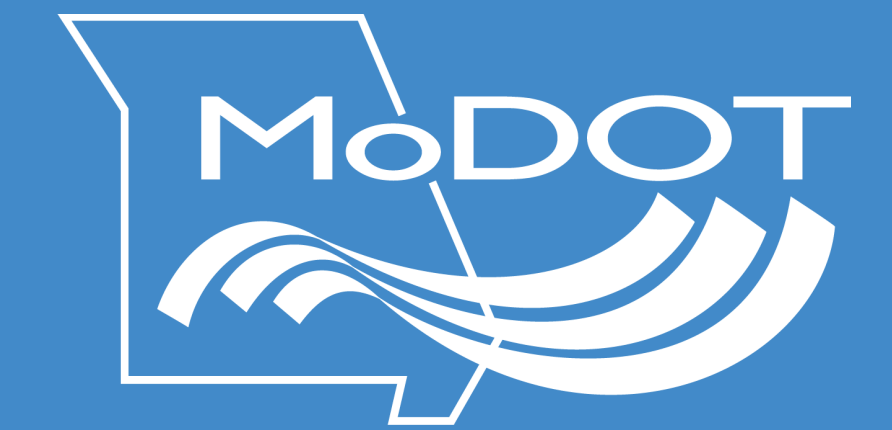


LEGEND

 Buildable Footprint



CHESTER BRIDGE MAINTENANCE PROJECT



- **PROJECT SCHEDULE:** JULY - DECEMBER 2022
- **TYPE OF REPAIR:** DECK AND STEEL REPAIR

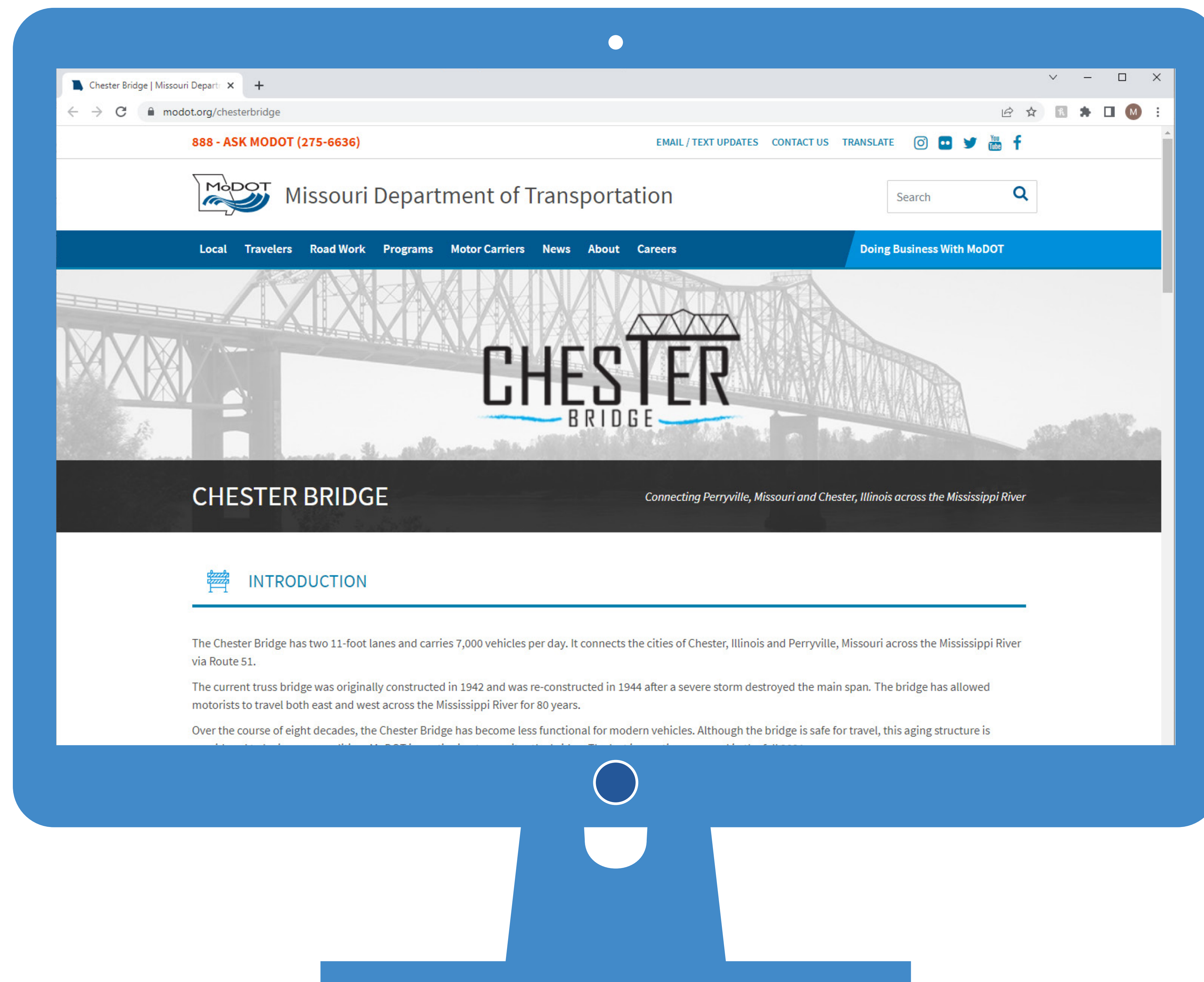
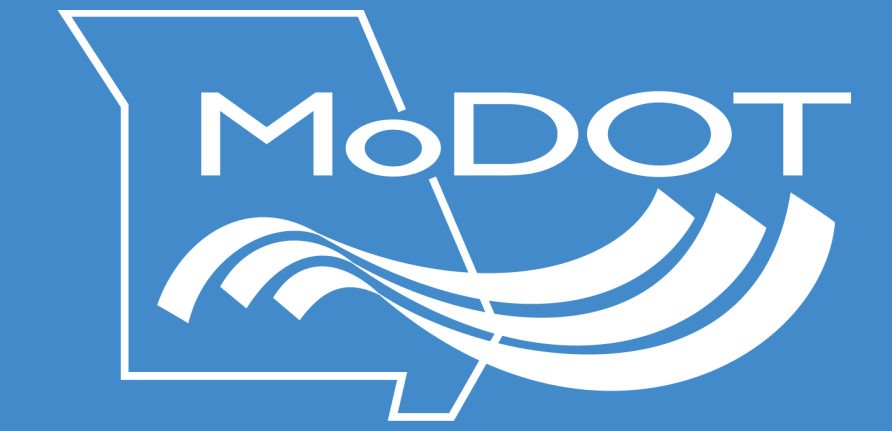


WHY SPEND MONEY TO DO THIS WORK WHEN THE BRIDGE IS BEING REPLACED?

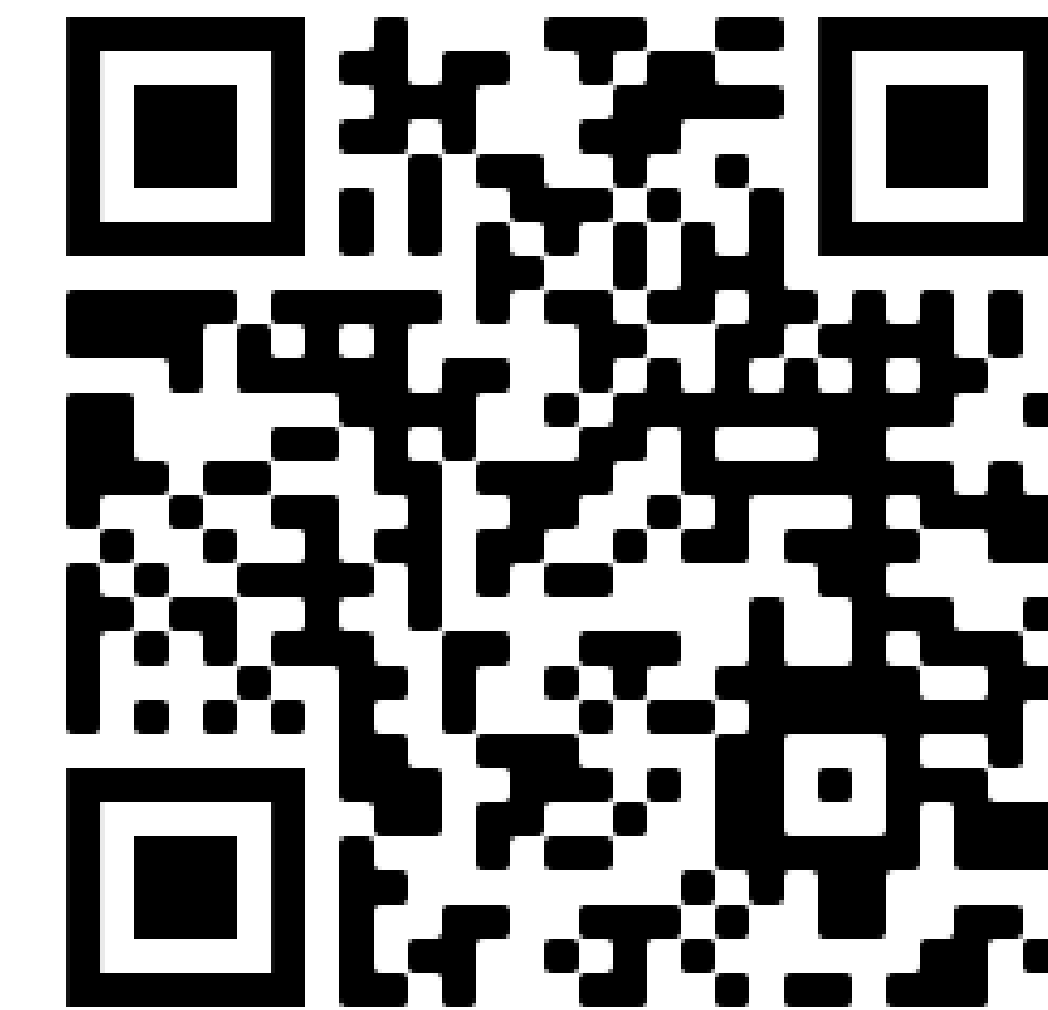
This work is necessary to keep the bridge open and without restrictions through the replacement project. The existing bridge is safe for travel and is inspected every year. The last inspection was in December 2021.



CHESTER BRIDGE WEBSITE



► Visit the website to stay up to date!



modot.org/chesterbridge