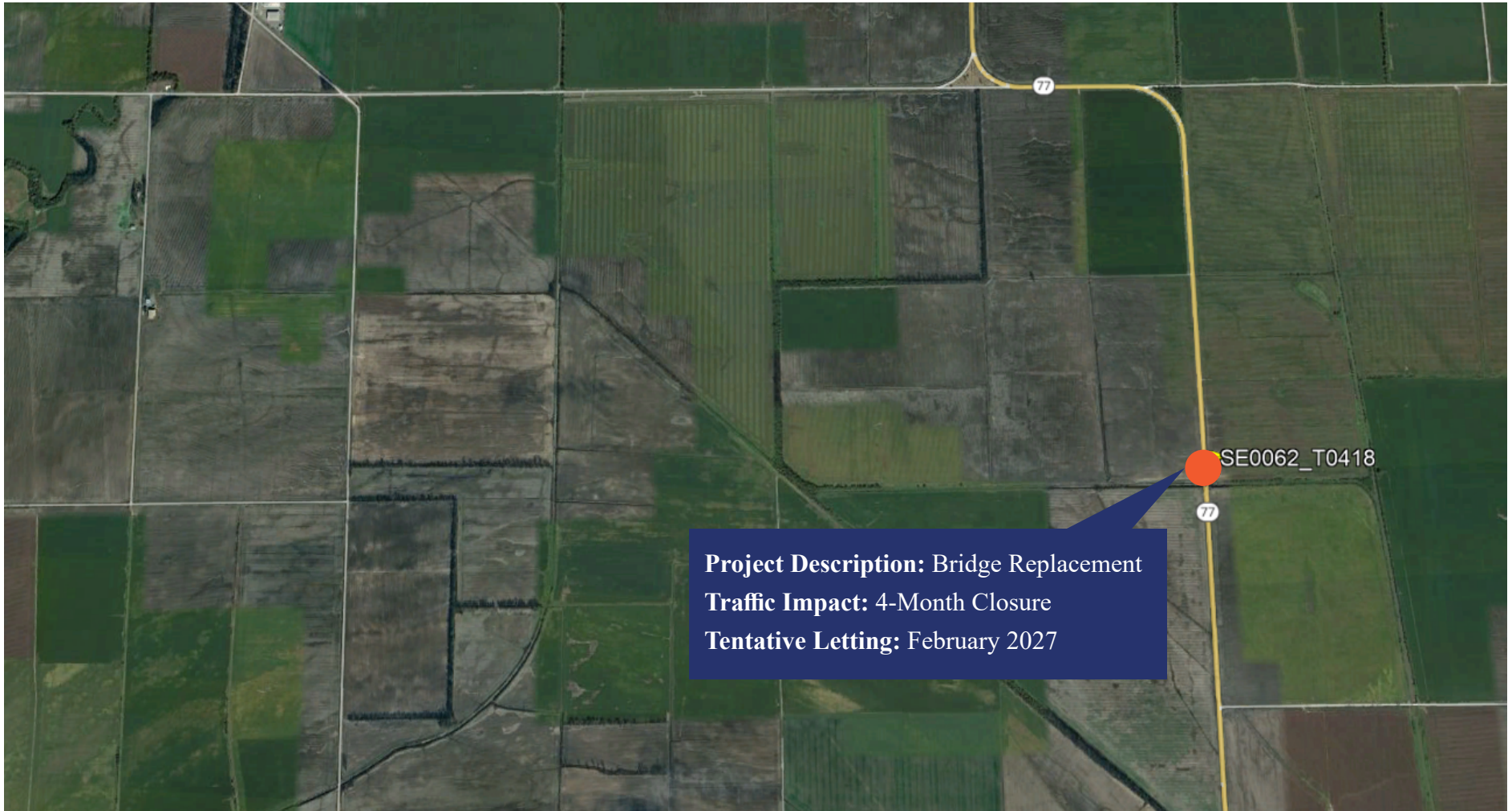


MISSISSIPPI COUNTY

Route 77 Lateral Ditch 3



Project Description: Bridge Replacement

Traffic Impact: 4-Month Closure

Tentative Letting: February 2027

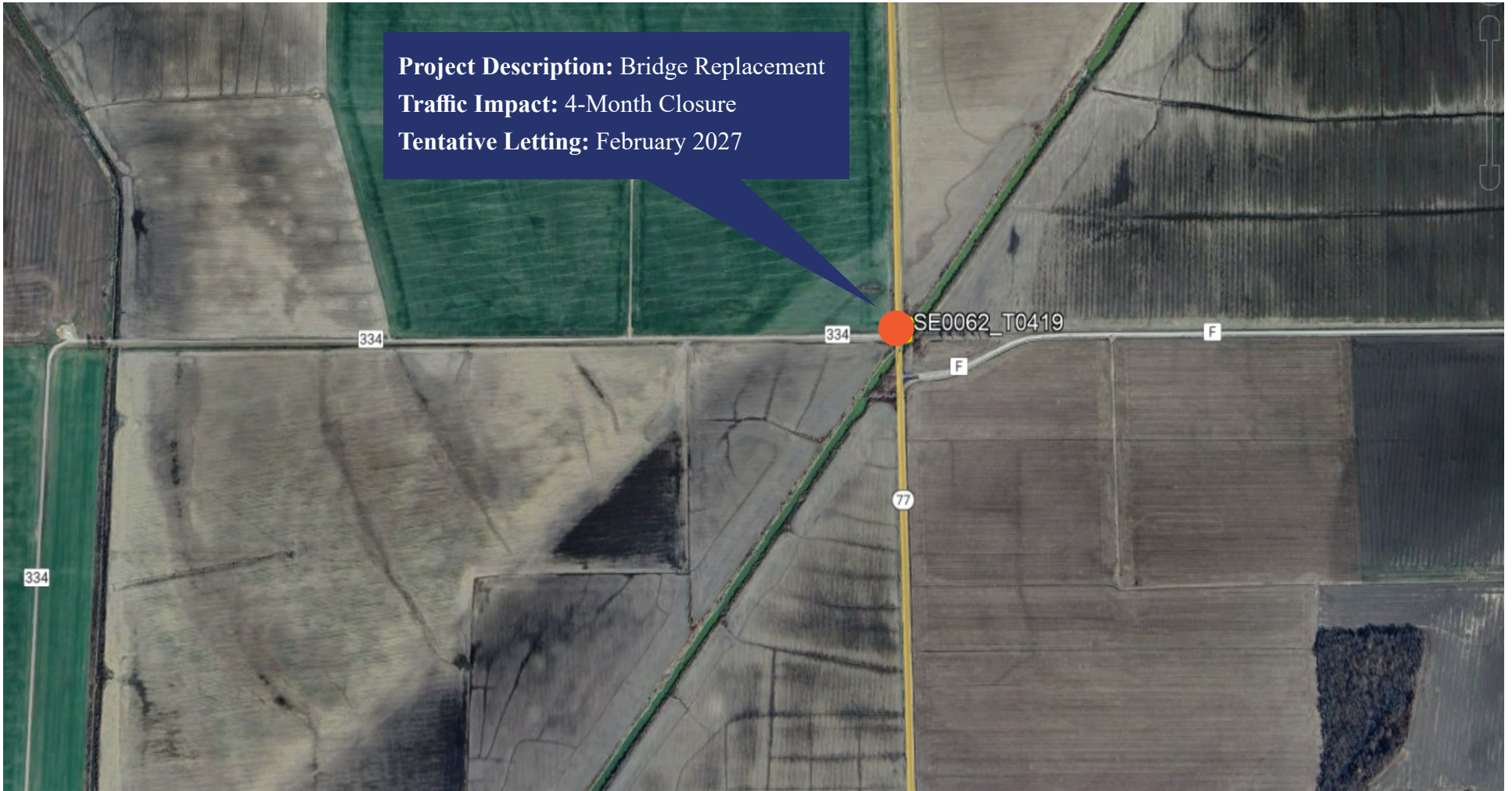


Missouri Department of Transportation | Southeast District | 2675 North Main Street
Sikeston, MO 63801 | 1-888 ASK MODOT (275-6636) | www.modot.org/southeast

MISSISSIPPI COUNTY

Route 77 Main Ditch

Project Description: Bridge Replacement
Traffic Impact: 4-Month Closure
Tentative Letting: February 2027



Missouri Department of Transportation | Southeast District | 2675 North Main Street
Sikeston, MO 63801 | 1-888 ASK MODOT (275-6636) | www.modot.org/southeast

MISSISSIPPI COUNTY

Route 77 Lateral Ditch 4

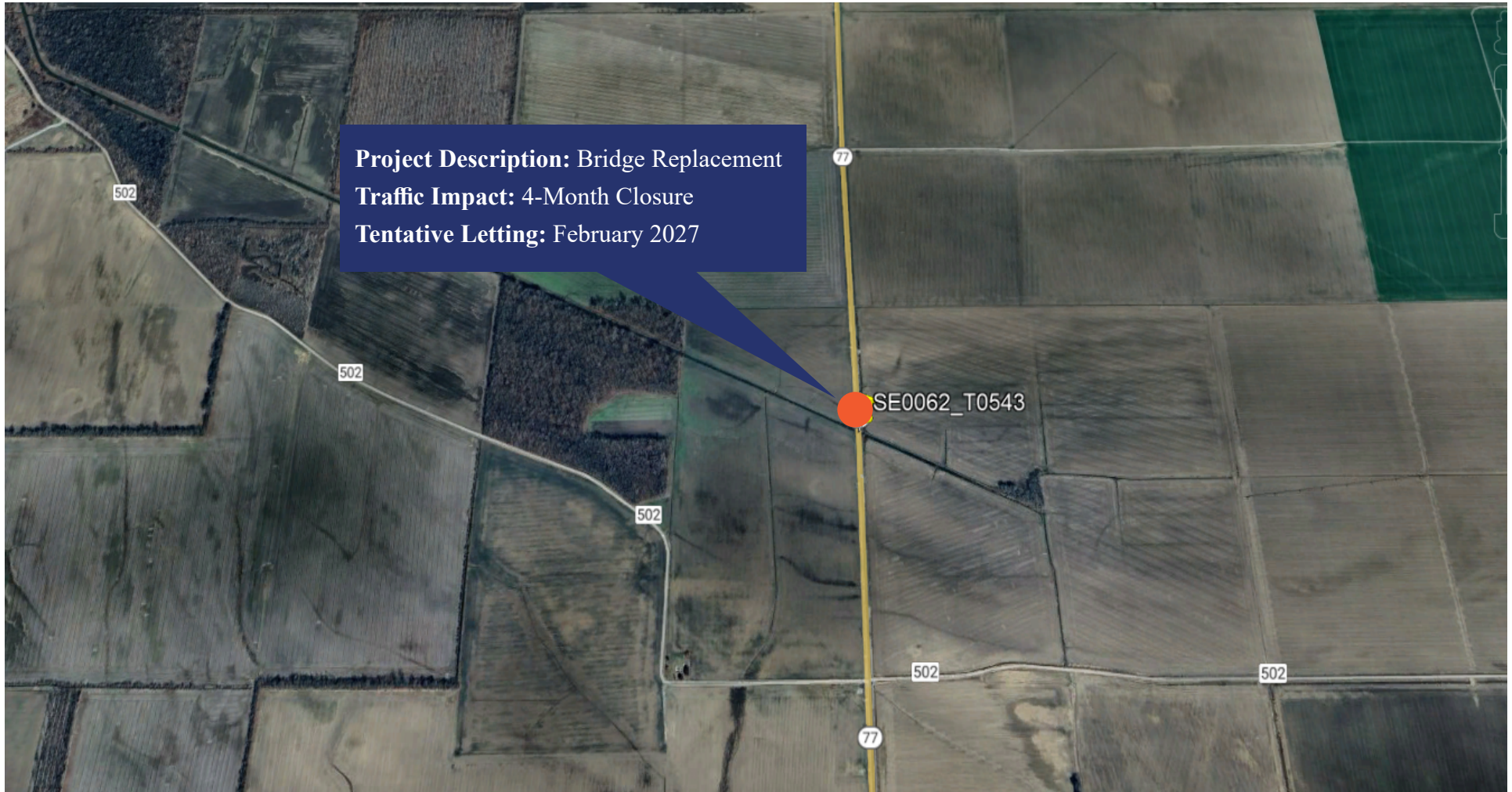
Project Description: Bridge Replacement
Traffic Impact: 4-Month Closure
Tentative Letting: February 2027



Missouri Department of Transportation | Southeast District | 2675 North Main Street
Sikeston, MO 63801 | 1-888 ASK MODOT (275-6636) | www.modot.org/southeast

MISSISSIPPI COUNTY

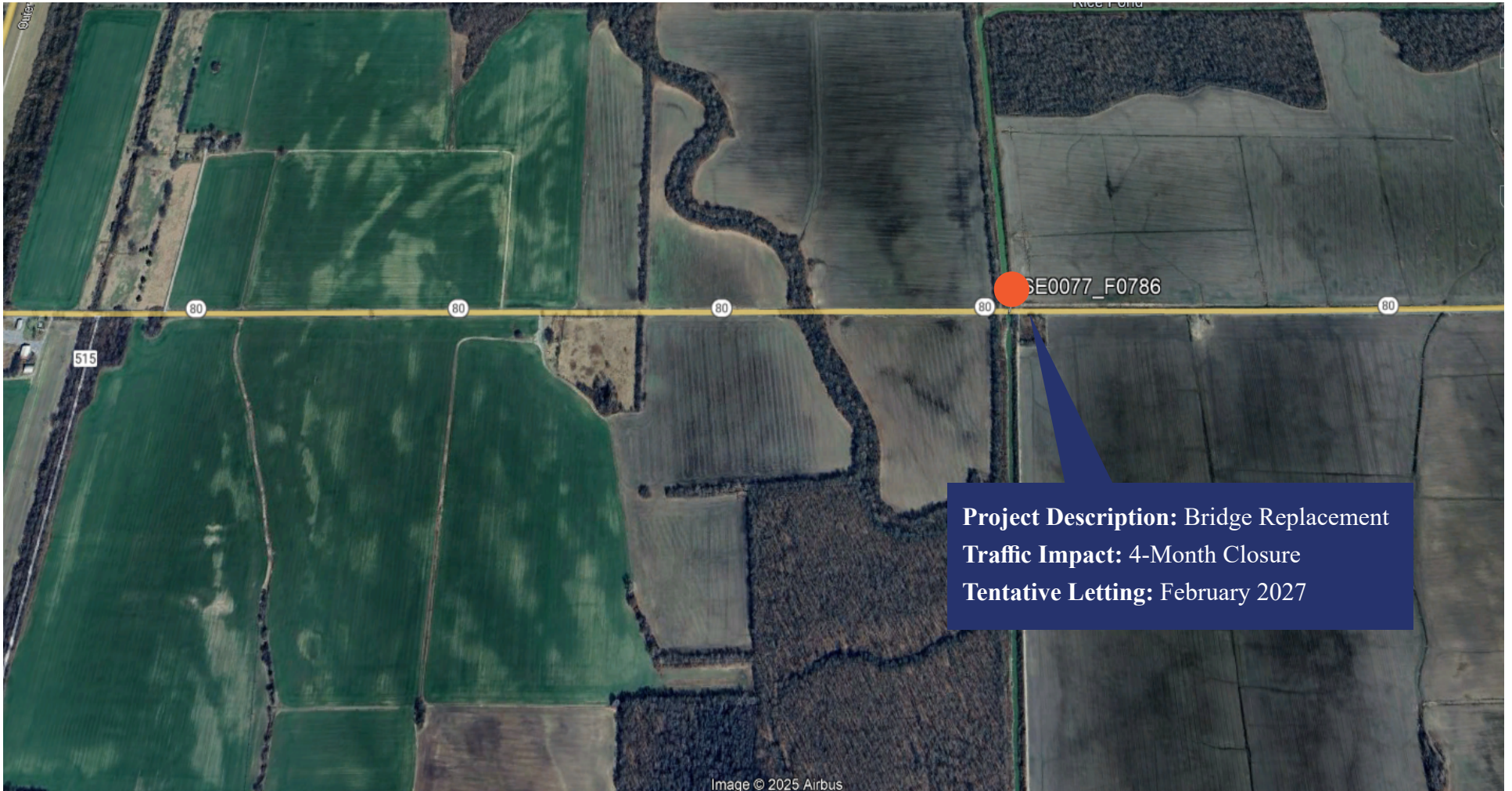
Route 77 Lateral Ditch 7



Missouri Department of Transportation | Southeast District | 2675 North Main Street
Sikeston, MO 63801 | 1-888 ASK MODOT (275-6636) | www.modot.org/southeast

MISSISSIPPI COUNTY

Route 80 Drainage Ditch 23



Project Description: Bridge Replacement
Traffic Impact: 4-Month Closure
Tentative Letting: February 2027



Missouri Department of Transportation | Southeast District | 2675 North Main Street
Sikeston, MO 63801 | 1-888 ASK MODOT (275-6636) | www.modot.org/southeast

MISSISSIPPI COUNTY

Route 80 Drainage Ditch 29



Missouri Department of Transportation | Southeast District | 2675 North Main Street
Sikeston, MO 63801 | 1-888 ASK MODOT (275-6636) | www.modot.org/southeast