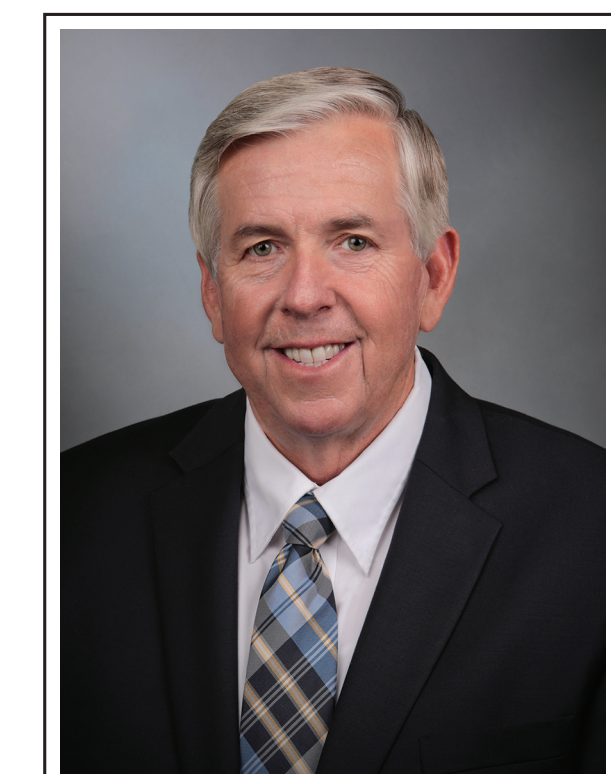
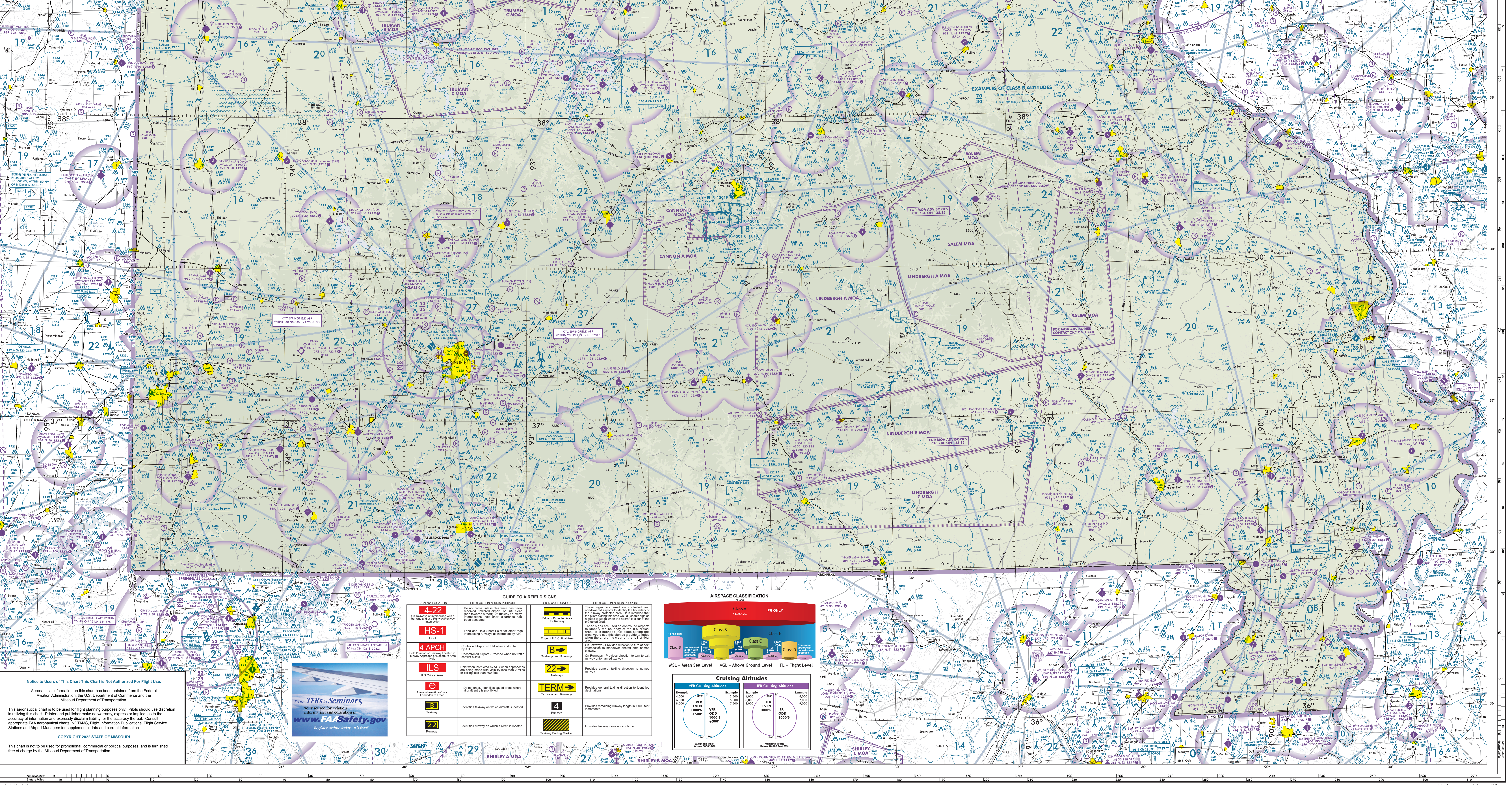




MISSOURI Aeronautical Chart



STATE CAPITOL
201 W. CAPITOL AVENUE, ROOM 216
JEFFERSON CITY, MISSOURI 64503

573.751.5222
WWW.GOVERNOR.MO.GOV

Michael L. Parson
GOVERNOR
STATE OF MISSOURI

Dear Aviator:
As Governor of the State of Missouri, I am pleased to provide the 2022-2023 Missouri Aeronautical Chart to assist you in your travels throughout the "Show-Me State." These pages contain detailed information on the state's system of airports and air navigational aids, which are an important part of the national aviation system.
Airports are critical to our state's infrastructure. Not only do they have a crucial role in driving economic development, but they also provide a safe travel option to move people and cargo throughout the state. On a larger scale, our state's airports help Missouri businesses expand to markets across the nation and around the world.

We are certain you will find this aeronautical chart to be a valuable resource to assist in flight planning as you travel throughout our beautiful state. Please take the time to enjoy the local hospitality and rich heritage the people of Missouri have to offer. We extend our best wishes for a safe flight!

Sincerely,
Michael L. Parson
Michael L. Parson
Governor

Notice to Users of This Chart—This Chart is Not Authorized For Flight Use.
Aeronautical information on this chart has been obtained from the Federal Aviation Administration, the U.S. Department of Commerce and the Missouri Department of Transportation.
This aeronautical chart is to be used for flight planning purposes only. Pilots should use discretion in utilizing this chart. Printer and publisher make no warranty or representation as to the accuracy of information and expressly disclaim liability for the accuracy thereof. Consult appropriate FAA aeronautical charts, NOTAMS, Flight Information Publications, Flight Service Stations and Airport Managers for supplemental data and current information.
COPYRIGHT 2022 STATE OF MISSOURI
This chart is not to be used for promotional, commercial or political purposes, and is furnished free of charge by the Missouri Department of Transportation.

From TFRs to Seminars,
www.FAASafety.gov
Register online today. It's free!

Sign and Location	Pilot Action or Sign Purpose	Sign and Location	Pilot Action or Sign Purpose
4-222 On Taxiway, Runway, or Apron Runway or Apron Closed	Do not cross unless clearance has been received from ATIS.	4-222 Edge of Protected Area	These signs are used on controlled airports to identify the boundaries of the Class E airspace which would use this sign as a guide to judge when the aircraft is clear of the protected area.
HS-1 Holds	Land and Hold Short Point for other than Intersecting Runway as instructed by ATIS.	B-2 Taxiways and Runways	On Taxiways - Provides direction to turn to next taxiway. On Runways - Provides direction to turn to exit runway or to named taxiway.
4-APCH Holds (Positioned in Taxiway or Runway)	Controlled Airport - Hold when instructed by ATIS. Uncontrolled Airport - Proceed when no traffic conflict exists.	22 Taxiway	Provides general taxiing direction to named runway.
ILS ILS Critical Area	Hold when instructed by ATIS when approached or holding less than 800 feet.	TERM Taxiways and Runways	Provides general taxiing direction to identified taxiways.
4-1 Aircraft Obstruction	Do not enter. Identifies paved areas where aircraft entry is prohibited.	4 Taxiway	Provides remaining runway length in 1,000 foot increments.
4-2 Taxiway	Identifies taxiway on which aircraft is located.	4 Taxiway Ending Marker	Indicates taxiway does not continue.

