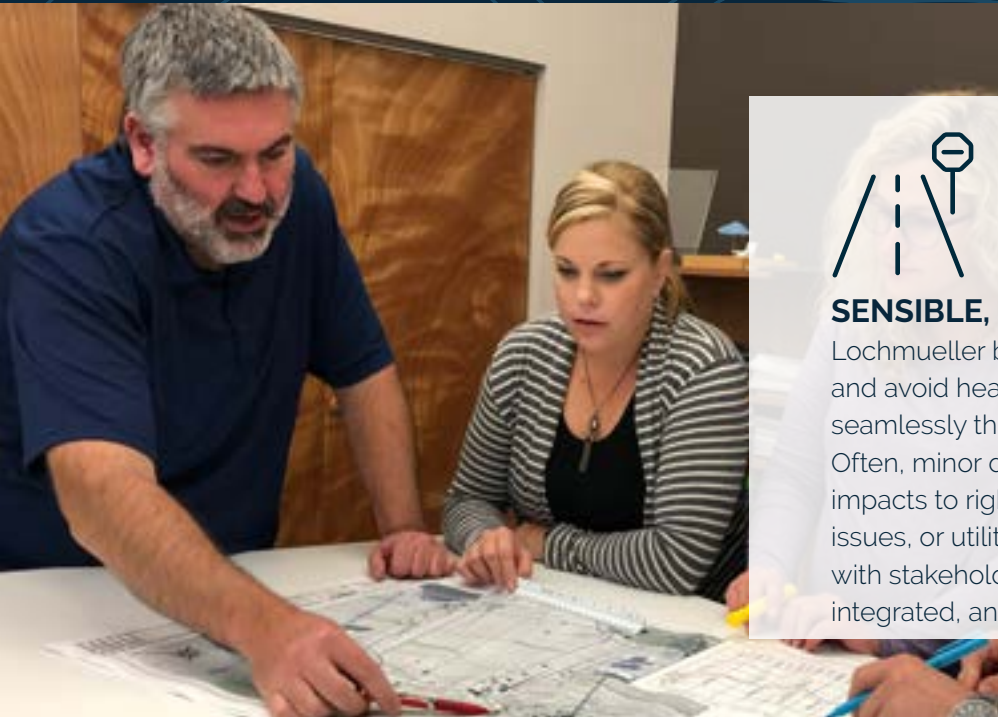
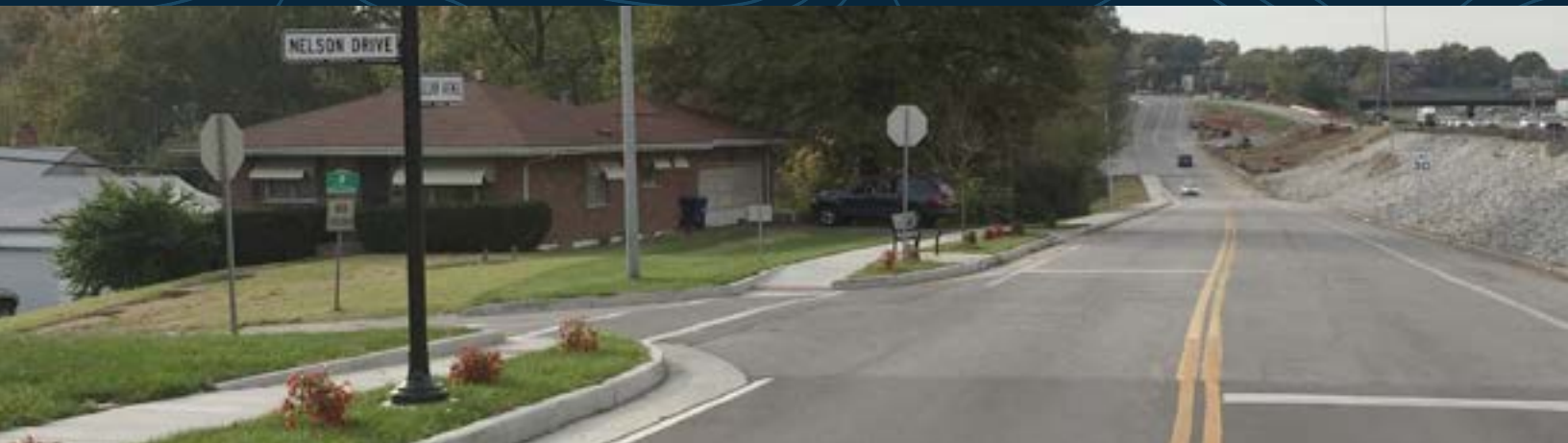


LOCHMUELLER SERVICES ROADWAY DESIGN



SENSIBLE, INTEGRATED, & SUSTAINABLE

Lochmueller believes the best way to maximize value and avoid headaches is to integrate a variety of disciplines seamlessly throughout the roadway design process. Often, minor design changes can eliminate or reduce impacts to right-of-way acquisition, environmental issues, or utilities relocation. Effective communication with stakeholders to build consensus leads to sensible, integrated, and sustainable roadways.



PROJECT HIGHLIGHT

LILLIAN AVENUE ROADWAY RESURFACING & SIDEWALKS

Lochmueller created a "calmed" environment with enhanced access routes and crosswalks as well as improved transit stops along Lillian Avenue. Enhanced pedestrian crosswalks and curb "bump outs" at key intersections were added to aid in traffic calming. Stormwater drainage was improved by implementing the new curb-and-gutter system, and by adjusting adjacent driveway and intersection pavement grades..

SEE OUR PROJECTS

Our focus is on building and maintaining an efficient and safe network of roadways to support the communities we serve. Lochmueller offers urban/residential street design; complete streets; alternative intersection designs including roundabouts, multi-modal facilities, signage inventory, and design; high-visibility pavement markings; traffic signal design; and streetscape and landscape architecture.



NORTH LAFAYETTE STREET FLORISSANT, MISSOURI

Improved roadway leading into historic downtown with resurfacing, new curb-and-gutter, new storm sewer system and stormwater BMPs, ADA-compliant curb ramps and sidewalks, and utility relocations.



SOUTH 5TH STREET ST. CHARLES, MISSOURI

Lochmueller designed upgrades to this major collector with a full-depth pavement reconstruction, additional parking, off-street bicycle and pedestrian facilities, replacement water mains, and new sewer system.



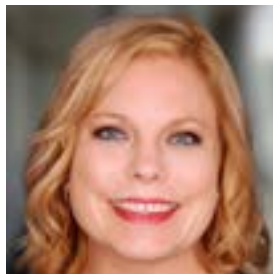
I-44/ROUTE 44 DESIGN-BUILD MISSOURI DEPARTMENT OF TRANSPORTATION

Responsible for design of four intersections north of the flood-prone Meramec River, including two new J-Turns, collector-distributor bridge, and retaining wall design as part of this extensive design-build.

MEET OUR LEADERSHIP



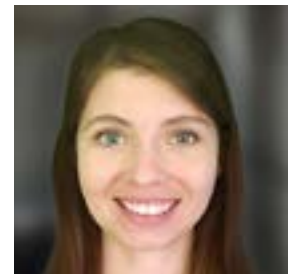
LORNE JACKSON, PE
Senior Project Manager
ljackson@lochgroup.com



KELLEY DAVIS, PE
Project Manager
kdavis@lochgroup.com



SCOTT GOFORTH, PE
Project Engineer
scott.goforth@lochgroup.com



KENDRA ROGERS, PE
Project Engineer
kendra.rogers@lochgroup.com

CONTACT US

Scott J. Smith, PE
Missouri Regional Leader
ssmith@lochgroup.com

Lochmueller Group, Inc.
411 North 10th Street, Suite 200
St. Louis, Missouri 63101