



U.S. Route 61 and Routes B and E Interchange Improvements in Lincoln County



Project Summary

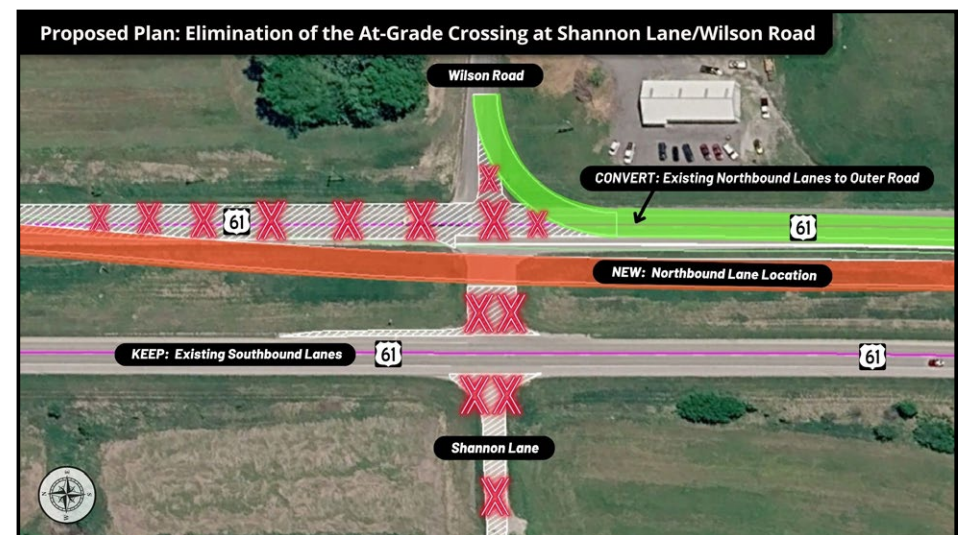
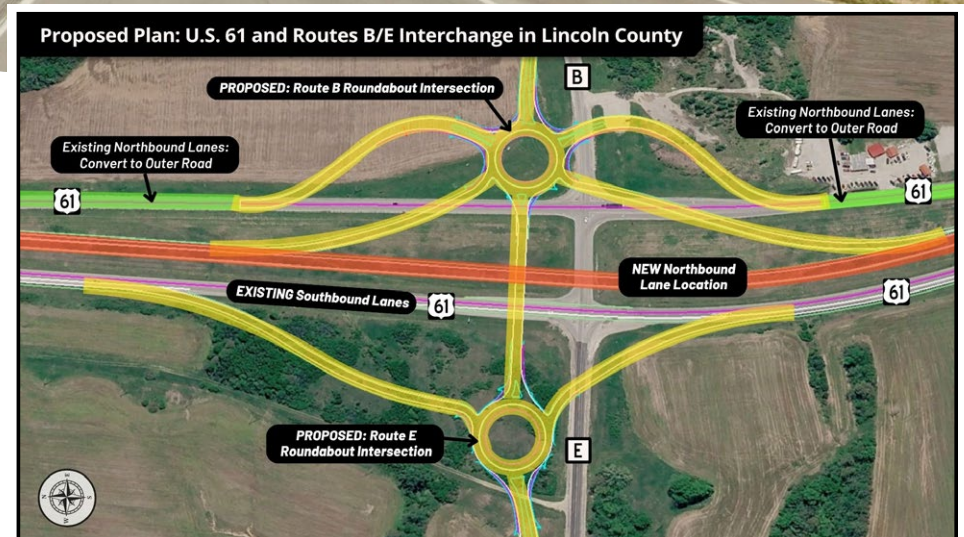
The Missouri Department of Transportation (MoDOT), working with its consultant Bartlett & West, is designing an interchange improvement project on U.S. Route 61 in Lincoln County, located at the Routes B/E intersection near Auburn.

Project Purpose and Need

U.S. Route 61 in Lincoln County is part of the 563-mile-long Avenue of the Saints, providing access between St. Paul, Minnesota and St. Louis, Missouri.

With the increased truck traffic and general growth in daily traffic, there has been a noticeable increase in crashes on the portion of U.S. 61 in Lincoln County. To reduce crashes along the U.S. 61 corridor, several at-grade crossings have been, or are planned to be, closed or replaced with full-access controlled interchanges.

Improving safety at the U.S. 61 and Routes B and E intersection has been a long-term priority for both MoDOT and the Booneslick Regional Planning Commission. Funding to replace the existing at-grade intersection

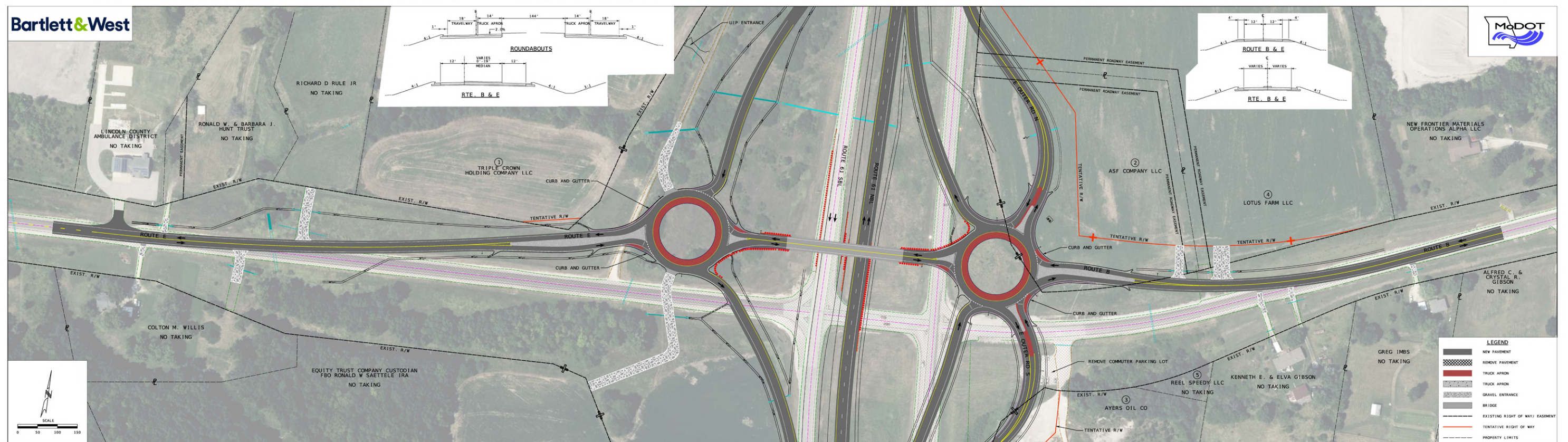
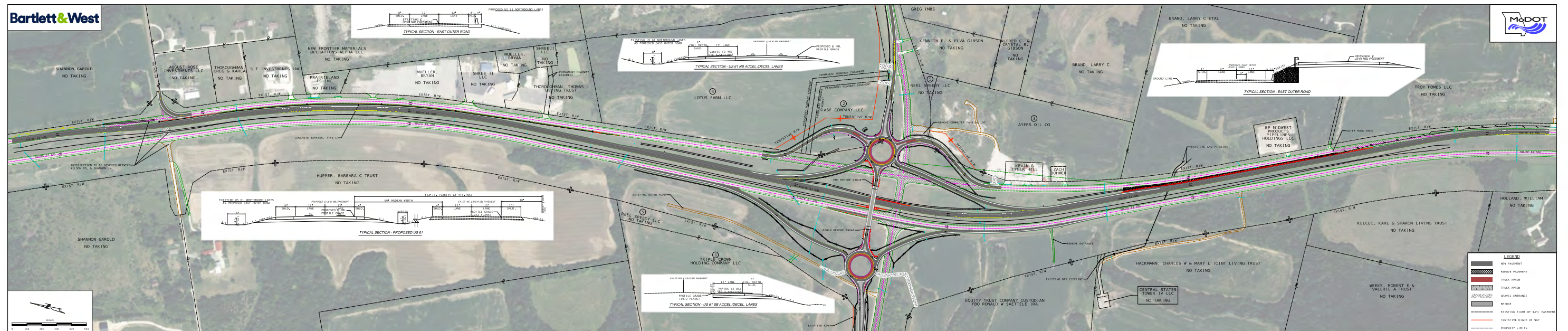


with an interchange is included in fiscal year 2028 of MoDOT's Statewide Transportation Improvement Program.

Visit the project website at <https://www.modot.org/projects/us-route-61-route-b-and-route-e-interchange-improvements-lincoln-county> to view display materials, submit comments and learn more about the project.



Interchange Improvement Project on U.S. Route 61 in Lincoln County, located at the Routes B and E intersection near Auburn



Project Goals

This interchange project, located approximately 10 miles north of Troy, will increase capacity for economic growth and the safety of motorists utilizing these U.S. 61 crossings in Lincoln County.

The interchange project will include:

- The elimination of two (2) existing at-grade crossings at:
 - Routes B and E
 - Shannon Lane and Wilson Road
- Shifting the location of the northbound lanes of U.S. 61 and constructing new lanes in the existing median

- Converting the existing U.S. 61 northbound lanes to an outer road, connecting local residents and business traffic to the interchange
- Constructing a new interchange, just north of existing Routes B/E intersection. The interchange design will include:
 - A new bridge over U.S. 61 featuring 12-foot lanes and 4-foot shoulders

- Two roundabouts, located on the east and west ramp terminal intersections
 - On and off ramps connecting U.S. 61 northbound and southbound traffic lanes to Routes B/E and the newly created outer road connection
- Environmental studies will be completed as part of the project.

Project Schedule

Project Milestone	Time-Frame
Public Meeting	June 17, 2026
Right of Way Acquisition	Fall 2026 to Summer 2027
Letting	December 2027
Under Contract	Spring 2028
Under Construction	2028-2029
Project Completion	Summer/Fall 2029

Frequently Asked Questions

How much does the project cost?

A: Approximately \$22.5 million

Q: What are the anticipated impacts?

A: Construction details have not been finalized at this time. MoDOT will work with residents and business owners to ensure access is available during construction.

Q: Will the road be closed during construction?

A: Various traffic impacts will be in place as the project progresses. MoDOT will make every reasonable effort to reduce delays due to construction. Customers can anticipate temporary traffic impacts throughout the project. More information regarding traffic impacts will be shared through news releases and social media for each stage of construction as details become available.

Q: Why propose the use of Roundabouts at the ramp terminals of the interchanges?

A: A roundabout is a one-way circular intersection that channels traffic around a central island without traffic signals. Roundabouts are a great alternative to a signalized intersection when a high volume of traffic needs to get through with the least amount of inconvenience.

While signalized intersections have approximately 20-30 conflict points, or spots where vehicles could collide, roundabouts reduce that number to eight. Fewer conflict points, combined with slower speeds and calmer traffic, can translate into as much as 76% fewer crashes. Because roundabouts tend to have fewer severe crashes than signalized intersections, they have fewer crash-related injuries as well. More information about roundabouts can be found on the project page, located under the Frequently Asked Questions section:

- Highway Features: Roundabouts
- All About Roundabouts Brochure

Q: Will MoDOT need to acquire any right of way?

A: Yes. Beginning in Fall 2026, MoDOT's Right of Way staff will begin the process of contacting property owners for any necessary right of way needed for the project. Right of Way discussions are anticipated to continue through 2027.

Q: How can I stay updated about the project?

A: Stay updated on news about roadwork in your area by signing up for emails at eUpdates at MoDOT.org

Q: Who can I contact if I have further questions?

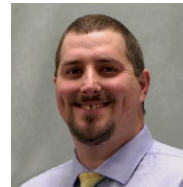
A: Questions about the project may be directed to **Chris Knapp**, MoDOT's project manager overseeing the project at christopher.knapp@modot.mo.gov or **Jeff Niemeyer**, Area Engineer, at jeffrey.niemeyer@modot.mo.gov

Project Contacts



Chris Knapp

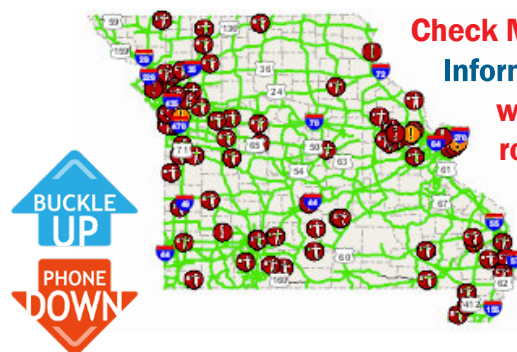
Transportation Project Manager
Northeast District
Christopher.Knapp@modot.mo.gov
(573) 248-2586



Jeff Niemeyer

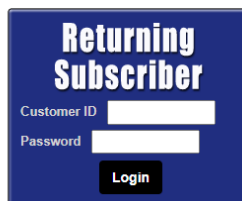
Area Engineer
Northeast District
jeffrey.niemeyer@modot.mo.gov
(573) 808-3562

Traveler Information Map



Check MoDOT's Traveler Information Map for weather-related road conditions, flood closures and work zone locations.

Welcome to E-updates and Text Alerts



To stay updated on the progress of this project, as well as road closures, events and more, sign up through MoDOT's e-update text/email alert system at <https://www.modot.org/eupdates>

For more information, contact MoDOT's Customer Service Center toll-free at 1-888-ASK-MoDOT (275-6636).

