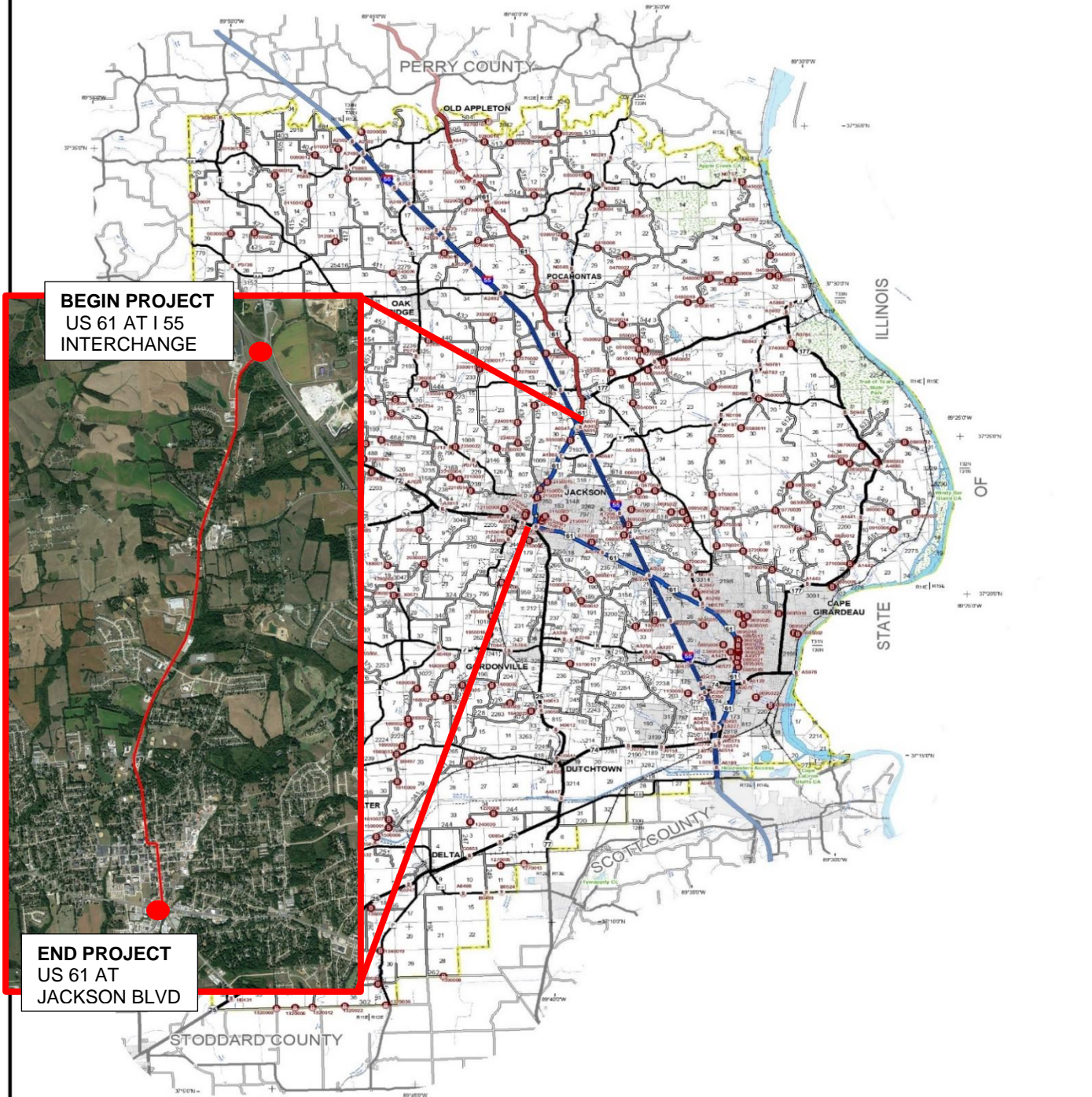


LOCATION MAP – US 61 CORRIDOR



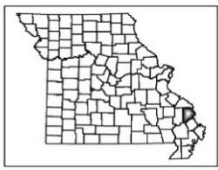
	INTERSTATE		PRIVATE OR OTHER ROAD		AIRPORT
	INTERSTATE LOOP		KATY TRAIL		HOSPITALS
	US HIGHWAY		RAILROAD		CEMETERY
	US HIGHWAY (DIVIDED)		RIVER OR STREAM		OTHER CITIES AND TOWNS
	STATE NUMBERED HIGHWAY		SECTION LINE		MODOT SHED
	STATE LETTERED HIGHWAY		COUNTY BOUNDARY		STATE BRIDGE (STRUCTURE ID)
	COUNTY ROAD		CITY LIMIT		COUNTY BRIDGE (STRUCTURE ID)
	US LOOP, SPUR OR ALT. RT.		LAKE OR POND		STATE CAPITOL
	CITY STREET		FOREST OR PARK		COUNTY SEAT



BEGIN PROJECT
US 61 AT I 55
INTERCHANGE

END PROJECT
US 61 AT
JACKSON BLVD

CAPE GIRARDEAU - 16



**GENERAL HIGHWAY MAP
CAPE GIRARDEAU COUNTY**
Prepared by MoDOT
Transportation Planning Division

Scale
0 1 2 3 4 Miles

Revised - April 2022

LOCATION MAP – SHAWNEE BOULEVARD, DONNA DRIVE

JACKSON

CAPE GIRARDEAU COUNTY

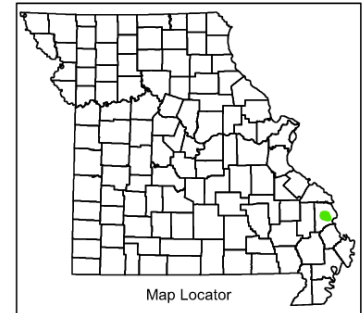
MISSOURI

SOUTHEAST DISTRICT

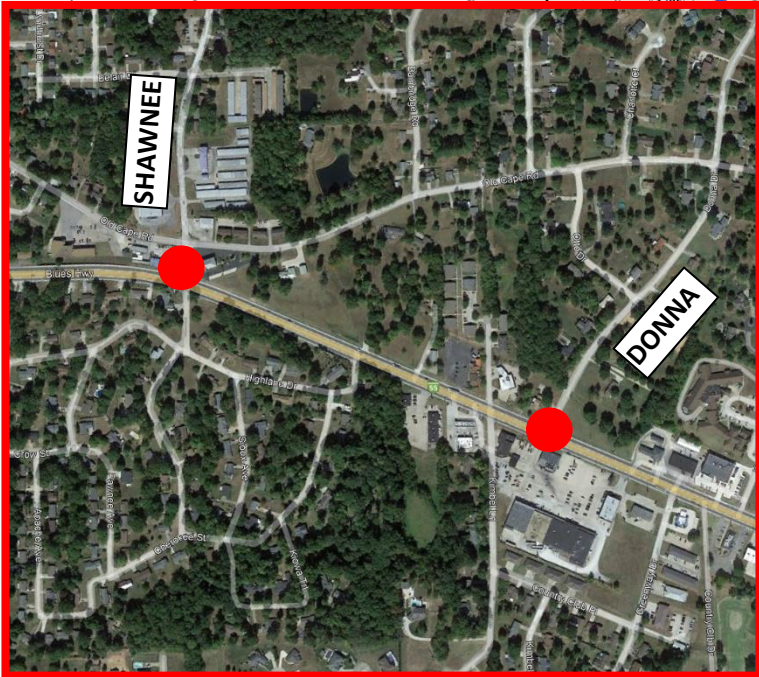
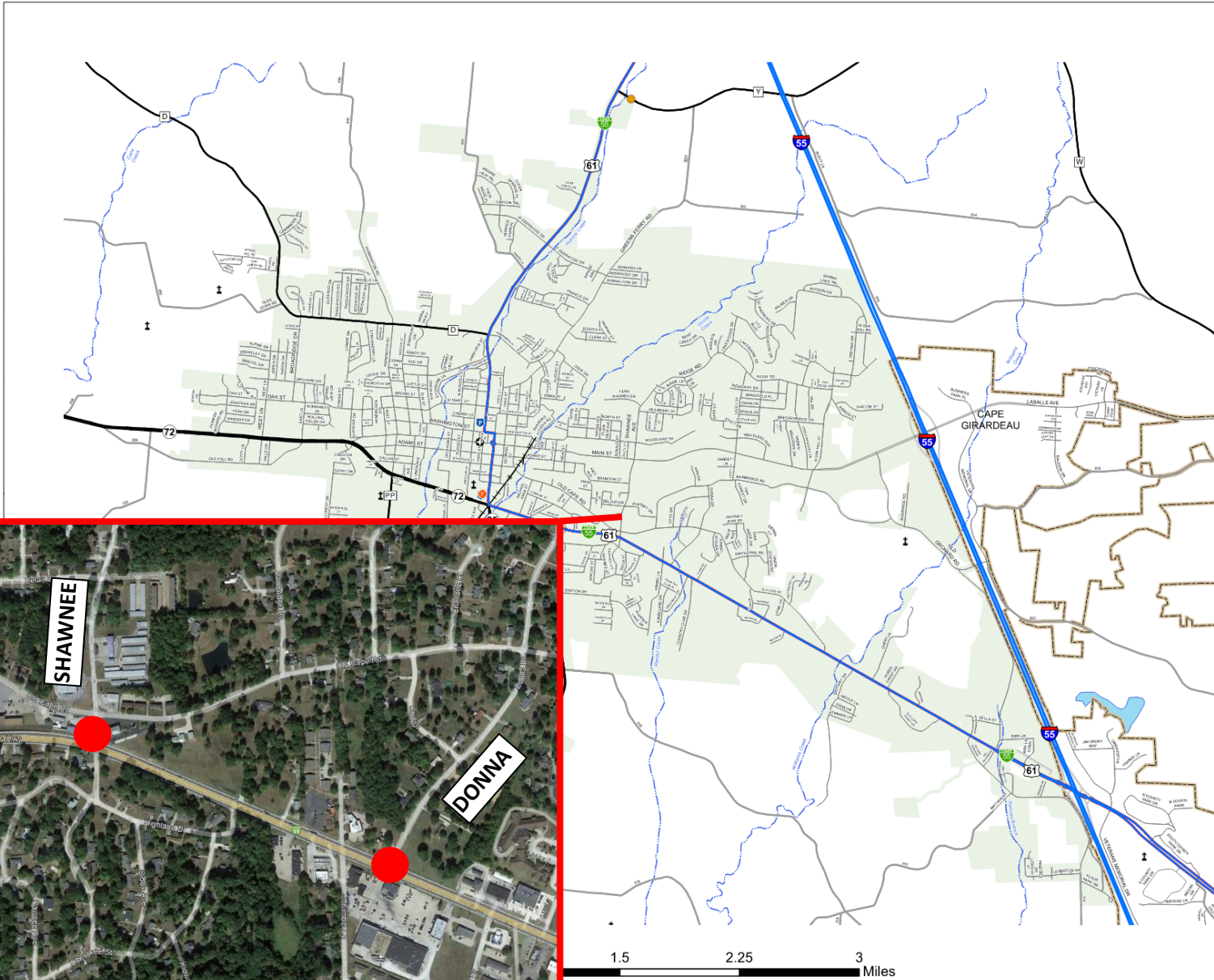
2021

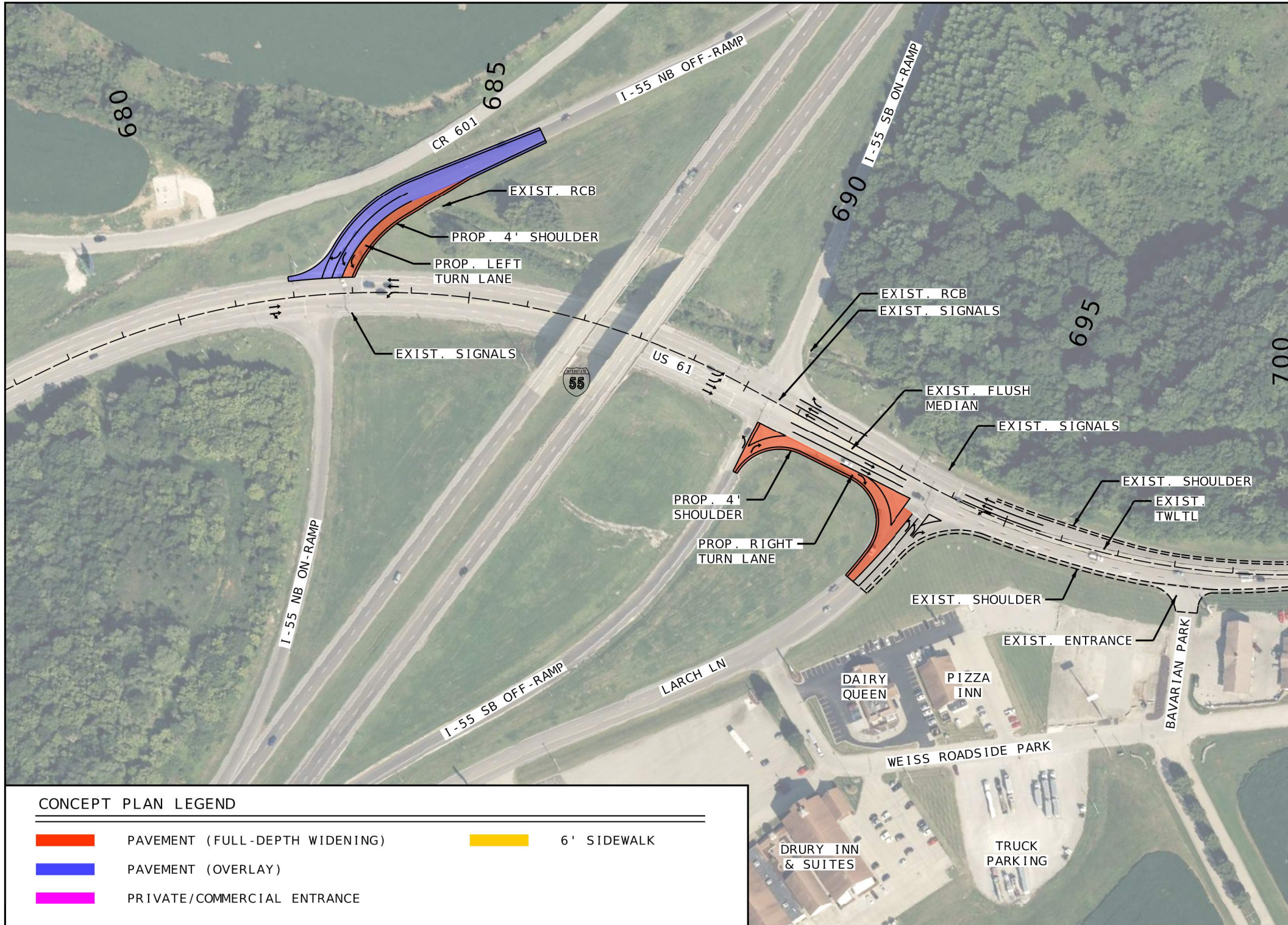
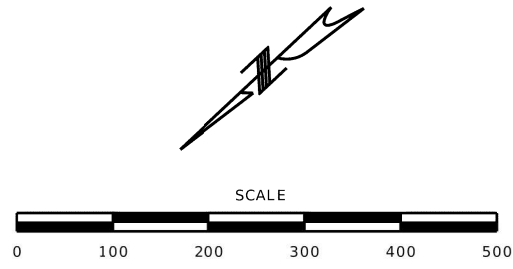


- Legend**
- Interstate
 - Interstate Loop
 - US Route
 - Business Route
 - Missouri Route
 - Letter Route
 - County Road
 - Railroad
 - City Street
 - Other Routes
 - River or Stream
 - Lake or Large River
 - City Limits
 - Surrounding City Limits
 - County Boundary
 - Metrolink Lines
 - Fire Department
 - Local Law Enforcement
 - MSHP Office
 - ★ Missouri State Capitol
 - County Courthouse
 - Hospitals
 - MoDOT Office
 - MoDOT Maintenance Building
 - ⚰ Cemeteries
 - ✈ Public Airports
 - Amtrak Stations
 - Metrolink Stations



MISSOURI DEPARTMENT OF TRANSPORTATION
 TRANSPORTATION PLANNING
 1-888-ASK-MODOT
 WWW.MODOT.ORG
 AUGUST 2021





CONCEPT PLAN LEGEND	
	PAVEMENT (FULL-DEPTH WIDENING)
	PAVEMENT (OVERLAY)
	PRIVATE/COMMERCIAL ENTRANCE
	6' SIDEWALK

MATCHLINE ALT 1 SHEET 2

ALTERNATIVE 1
US 61
SHEET 1 OF 6

CONCEPT PLANS NOT APPROVED FOR CONSTRUCTION

DATE	
10/6/2023	
ROUTE	STATE
61	MO
DISTRICT	SHEET NO.
SE	ALT 1
COUNTY	
CAPE GIRARDEAU	
JOB NO.	
J9P3450	
CONTRACT ID.	
PROJECT NO.	
BRIDGE NO.	

DATE	DESCRIPTION

MISSOURI HIGHWAYS AND TRANSPORTATION COMMISSION

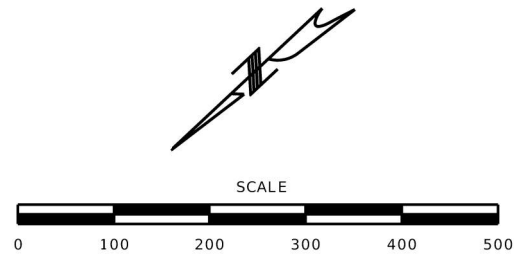
105 WEST CAPITOL
 JEFFERSON CITY, MO 65102
 1-888-ASK-MODOT (1-888-275-6636)

GBA

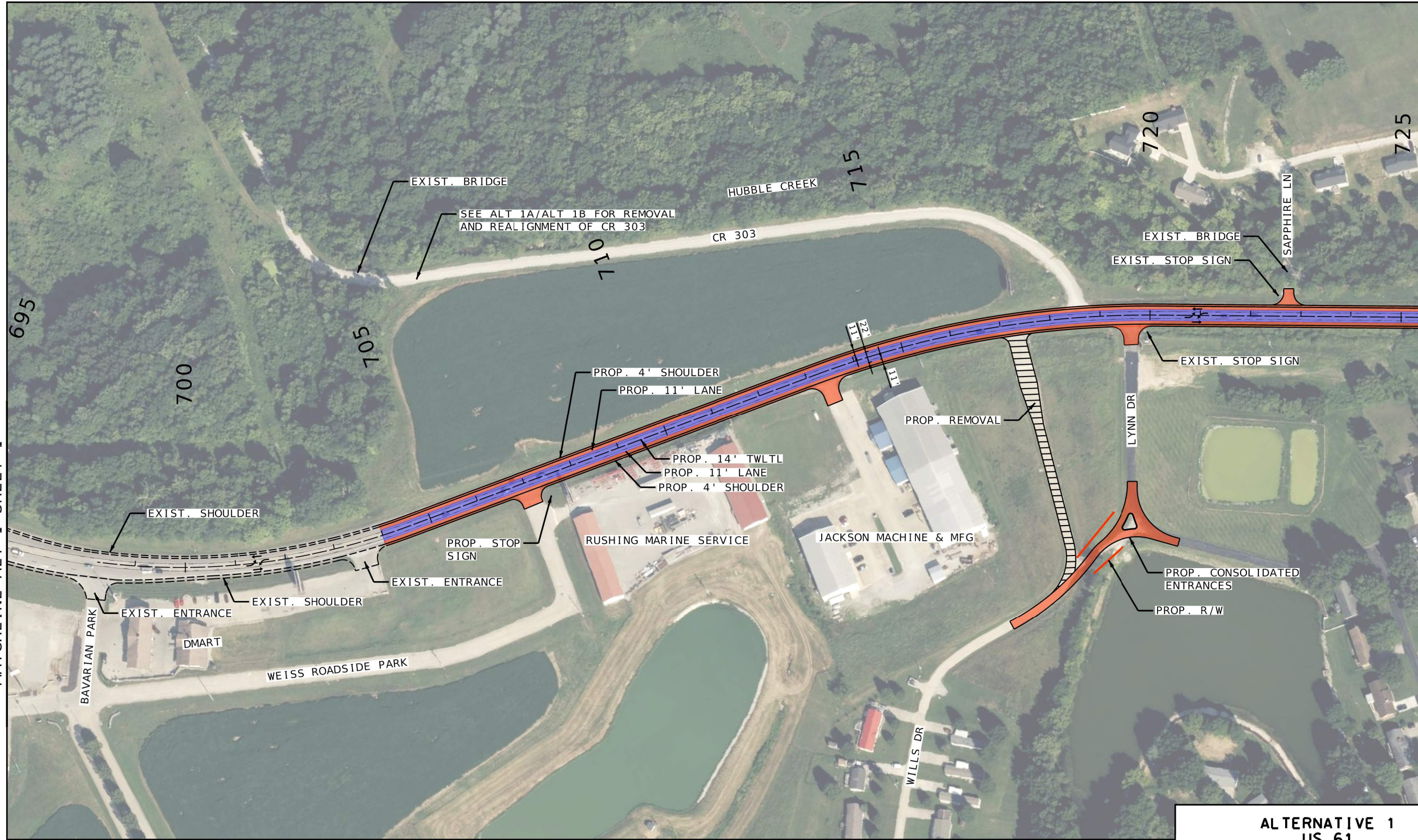
16305 Swingley Ridge Rd
 Ste. 300
 Chesterfield, MO 63017
 314.231.0100
 GBAteam.com

GEORGE BUTLER ASSOCIATES, INC.
 PRO. ENGINEER 000133
 ARCHITECT 000212
 PRO. LAND SURVEYOR 000059

NIKKI D. CONLEY
 PROFESSIONAL ENGINEER
 PE-2018040668



CONCEPT PLAN LEGEND			
	PAVEMENT (FULL-DEPTH WIDENING)		6' SIDEWALK
	PAVEMENT (OVERLAY)		CURB & GUTTER
	PRIVATE/COMMERCIAL ENTRANCE		REMOVAL



MATCHLINE ALT 1 SHEET 1

MATCHLINE ALT 1 SHEET 3

ALTERNATIVE 1
US 61
SHEET 2 OF 6

CONCEPT PLANS
NOT APPROVED
FOR
CONSTRUCTION

DATE PREPARED	
10/6/2023	
ROUTE	STATE
61	MO
DISTRICT	SHEET NO.
SE	ALT 1
COUNTY	
CAPE GIRARDEAU	
JOB NO.	
J9P3450	
CONTRACT ID.	
PROJECT NO.	
BRIDGE NO.	

DATE	DESCRIPTION

MISSOURI HIGHWAYS AND TRANSPORTATION COMMISSION

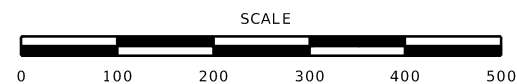
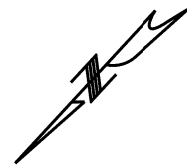
105 WEST CAPITOL
 JEFFERSON CITY, MO 65102
 1-888-ASK-MODOT (1-888-275-6636)

GBA

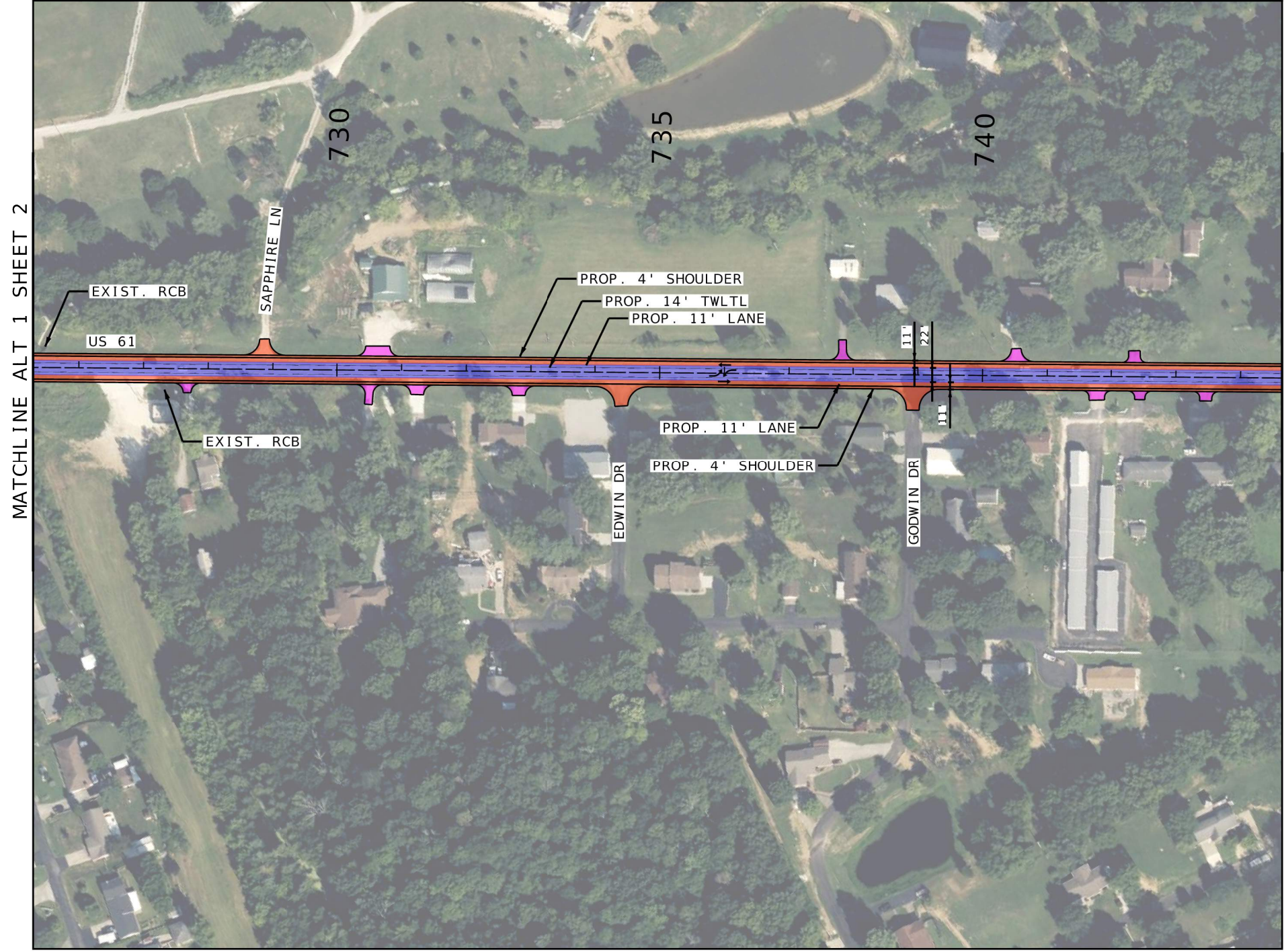
16305 Swingley Ridge Rd
 Ste. 300
 Chesterfield, MO 63017
 314.231.0100
 GBAteam.com

GEORGE BUTLER
 ASSOCIATES, INC.
 PRO. ENGINEER 000133
 ARCHITECT 000212
 PRO. LAND SURVEYOR 000059

NIKKI D. CONLEY
 PROFESSIONAL
 ENGINEER
 PE-2018040668



CONCEPT PLAN LEGEND			
	PAVEMENT (FULL-DEPTH WIDENING)		6' SIDEWALK
	PAVEMENT (OVERLAY)		CURB & GUTTER
	PRIVATE/COMMERCIAL ENTRANCE		



**CONCEPT
PLANS
NOT APPROVED
FOR
CONSTRUCTION**

DATE	
10/6/2023	
ROUTE	STATE
61	MO
DISTRICT	SHEET NO.
SE	ALT 1
COUNTY	
CAPE GIRARDEAU	
JOB NO.	
J9P3450	
CONTRACT ID.	
PROJECT NO.	
BRIDGE NO.	

DATE	DESCRIPTION

MISSOURI HIGHWAYS AND TRANSPORTATION COMMISSION

105 WEST CAPITOL
JEFFERSON CITY, MO 65102
1-888-ASK-MODOT (1-888-275-6636)

GBA

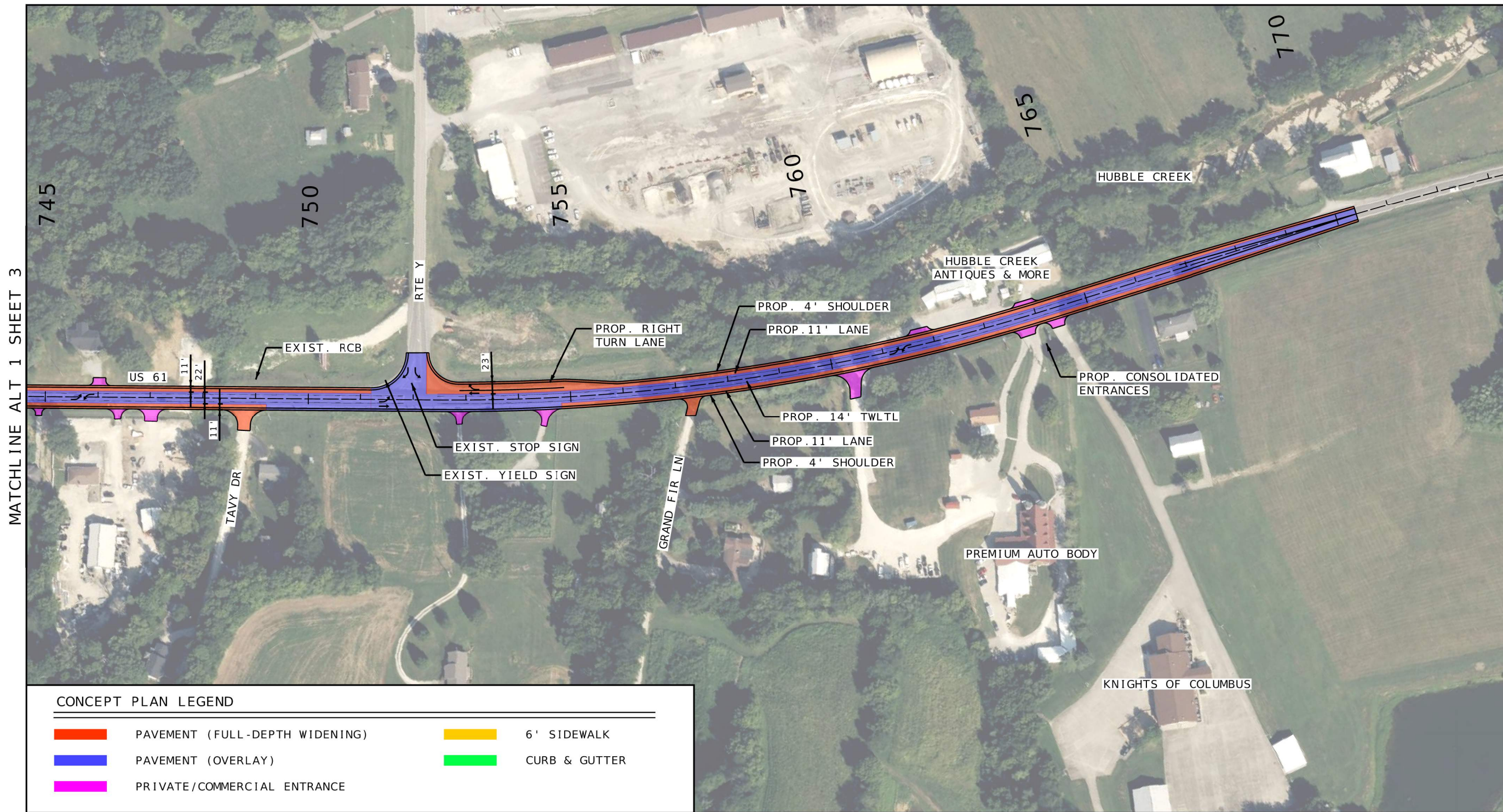
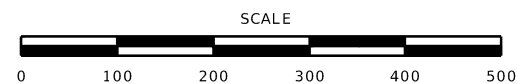
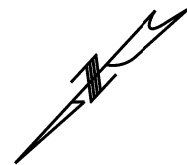
16305 Swingley Ridge Rd
Ste. 300
Chesterfield, MO 63017
314.231.0100
GBATeam.com

GEORGE BUTLER
ASSOCIATES, INC.
PRO. ENGINEER 000133
ARCHITECT 000212
PRO. LAND SURVEYOR 000059






NIKKI D. CONLEY
PROFESSIONAL
ENGINEER
PE-2018040668

**ALTERNATIVE 1
US 61
SHEET 3 OF 6**

IF A SEAL IS PRESENT ON THIS SHEET IT HAS BEEN ELECTRONICALLY SEALED AND DATED.



CONCEPT PLAN LEGEND


- | | | | |
|---|--------------------------------|--|---------------|
|  | PAVEMENT (FULL-DEPTH WIDENING) |  | 6' SIDEWALK |
|  | PAVEMENT (OVERLAY) |  | CURB & GUTTER |
|  | PRIVATE/COMMERCIAL ENTRANCE | | |

**ALTERNATIVE 1
US 61
SHEET 4 OF 6**

**CONCEPT
PLANS
NOT APPROVED
FOR
CONSTRUCTION**

DATE
10/6/2023
ROUTE 61 STATE MO
DISTRICT SE SHEET NO ALT 1
COUNTY CAPE GIRARDEAU
JOB NO. J9P3450
CONTRACT ID.
PROJECT NO.
BRIDGE NO.

DESCRIPTION	DATE

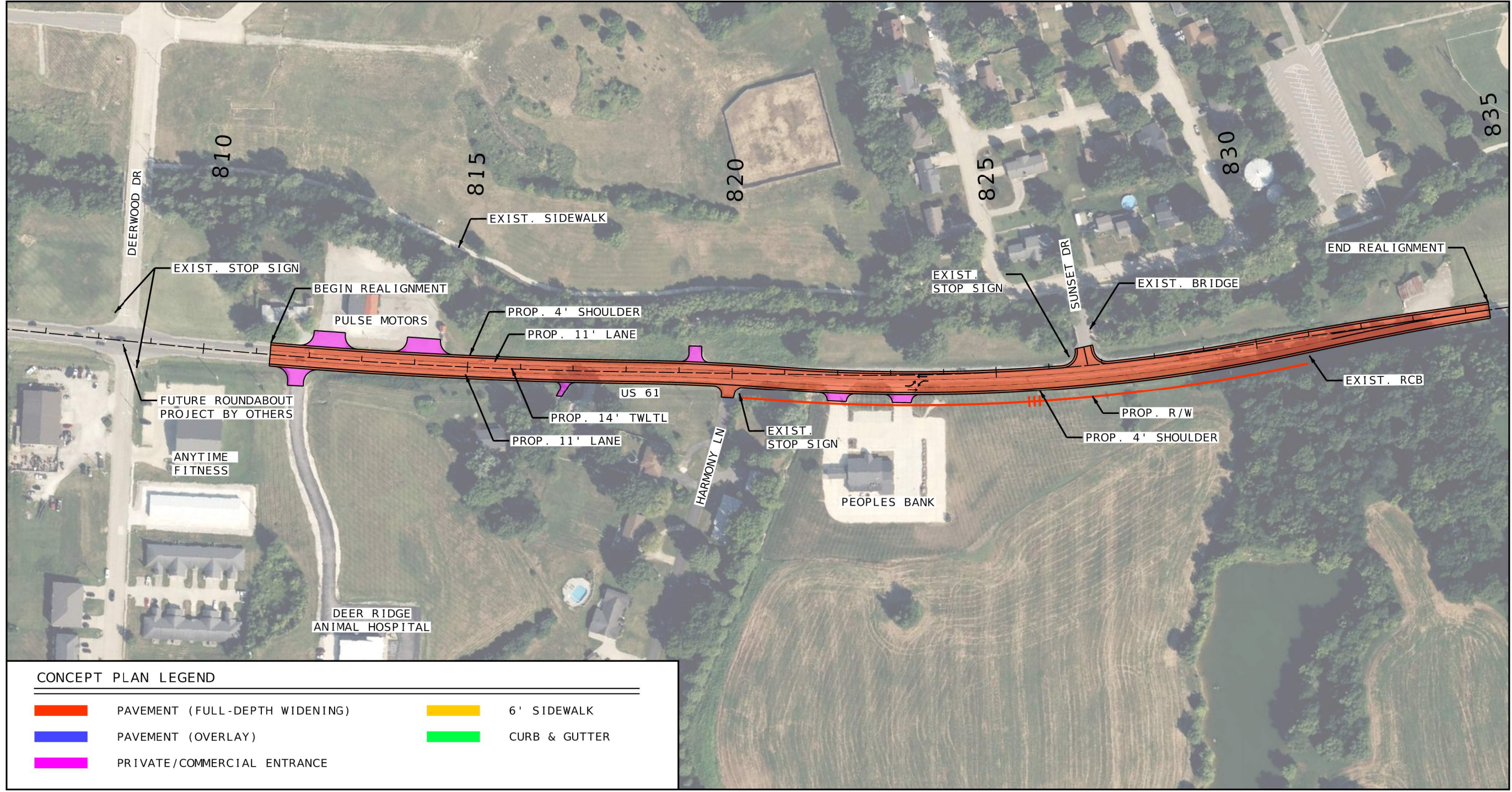
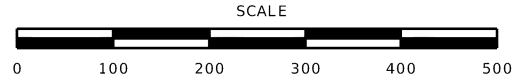
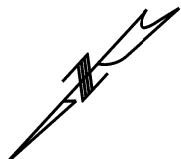
MISSOURI HIGHWAYS AND TRANSPORTATION COMMISSION

 105 WEST CAPITOL
 JEFFERSON CITY, MO 65102
 1-888-ASK-MODOT (1-888-275-6636)






GBA
 16305 Swingley Ridge Rd
 Ste. 300
 Chesterfield, MO 63017
 314.231.0100
 GBAteam.com

GEORGE BUTLER
 ASSOCIATES- INC.
 PRO. ENGINEER 000133
 ARCHITECT 000212
 PRO. LAND SURVEYOR 000059

NIKKI D. CONLEY
 PROFESSIONAL
 ENGINEER
 PE-2018040668

IF A SEAL IS PRESENT ON THIS SHEET IT HAS BEEN ELECTRONICALLY SEALED AND DATED.



CONCEPT PLAN LEGEND			
	PAVEMENT (FULL-DEPTH WIDENING)		6' SIDEWALK
	PAVEMENT (OVERLAY)		CURB & GUTTER
	PRIVATE/COMMERCIAL ENTRANCE		


ALTERNATIVE 1
US 61
SHEET 5 OF 6

**CONCEPT
PLANS
NOT APPROVED
FOR
CONSTRUCTION**

DATE	
DATE PREPARED 10/6/2023	
ROUTE 61	STATE MO
DISTRICT SE	SHEET NO. ALT 1
COUNTY CAPE GIRARDEAU	
JOB NO. J9P3450	
CONTRACT ID.	
PROJECT NO.	
BRIDGE NO.	

DESCRIPTION	DATE

MISSOURI HIGHWAYS AND TRANSPORTATION COMMISSION



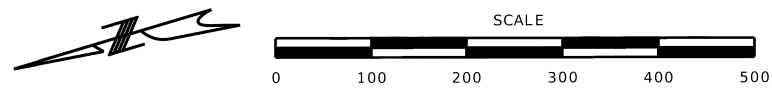
105 WEST CAPITOL
JEFFERSON CITY, MO 65102
1-888-ASK-MODOT (1-888-275-6636)

GBA

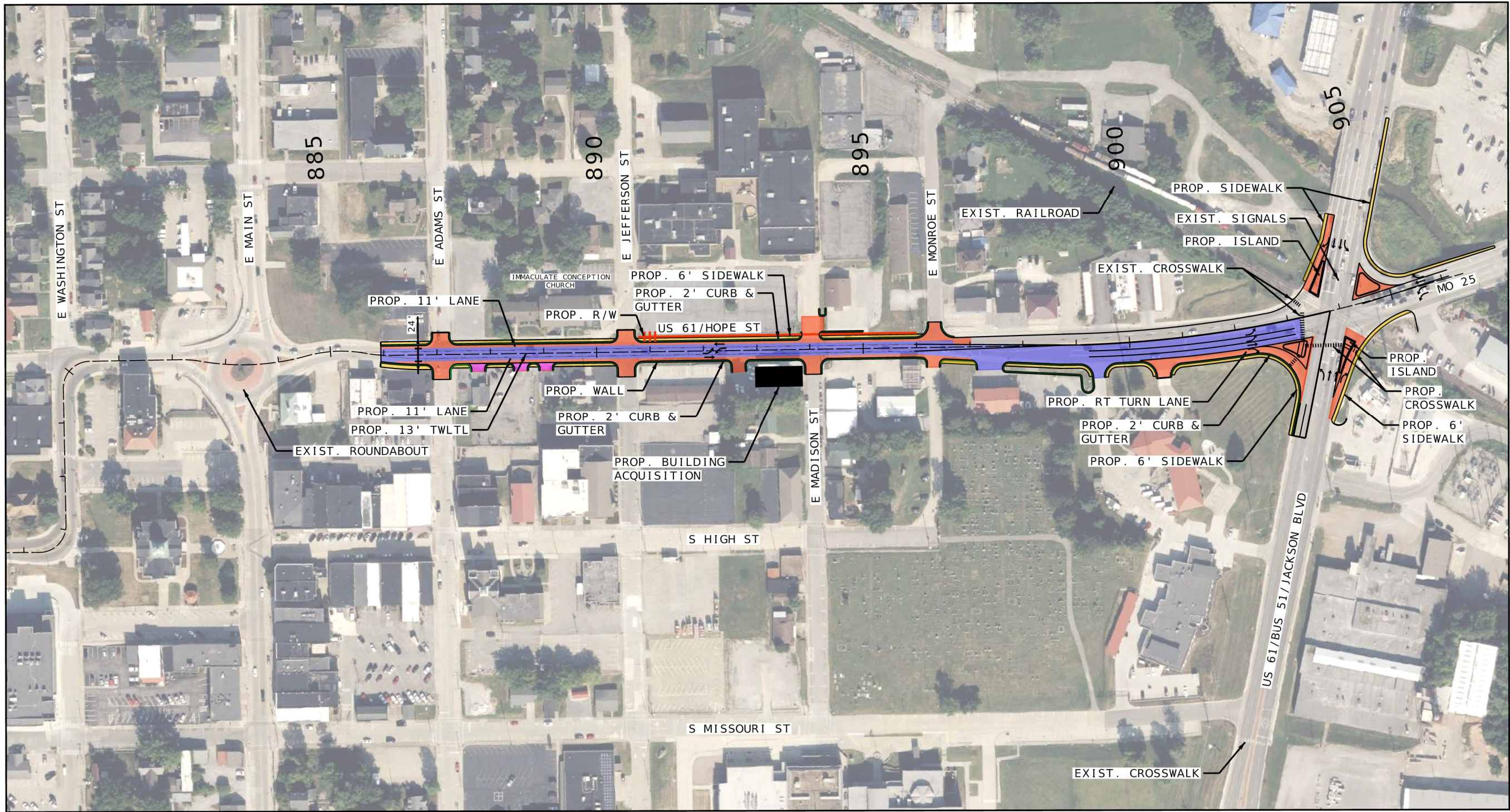
16305 Swingley Ridge Rd
Ste. 300
Chesterfield, MO 63017
314.231.0100
GBATeam.com

GEORGE BUTLER
ASSOCIATES- INC.
PRO. ENGINEER 000133
ARCHITECT 000212
PRO. LAND SURVEYOR 000059

IF A SEAL IS PRESENT ON THIS SHEET IT HAS BEEN ELECTRONICALLY SEALED AND DATED.



CONCEPT PLAN LEGEND			
	PAVEMENT (FULL-DEPTH WIDENING)		6' SIDEWALK
	PAVEMENT (OVERLAY)		CURB & GUTTER
	PRIVATE/COMMERCIAL ENTRANCE		



ALTERNATIVE 1
US 61
SHEET 6 OF 6

**CONCEPT
 PLANS
 NOT APPROVED
 FOR
 CONSTRUCTION**

DATE

DATE PREPARED
 10/6/2023

ROUTE 61 STATE MO

DISTRICT SE SHEET NO. ALT 1

COUNTY CAPE GIRARDEAU

JOB NO. J9P3450

CONTRACT ID.

PROJECT NO.

BRIDGE NO.

DESCRIPTION	DATE

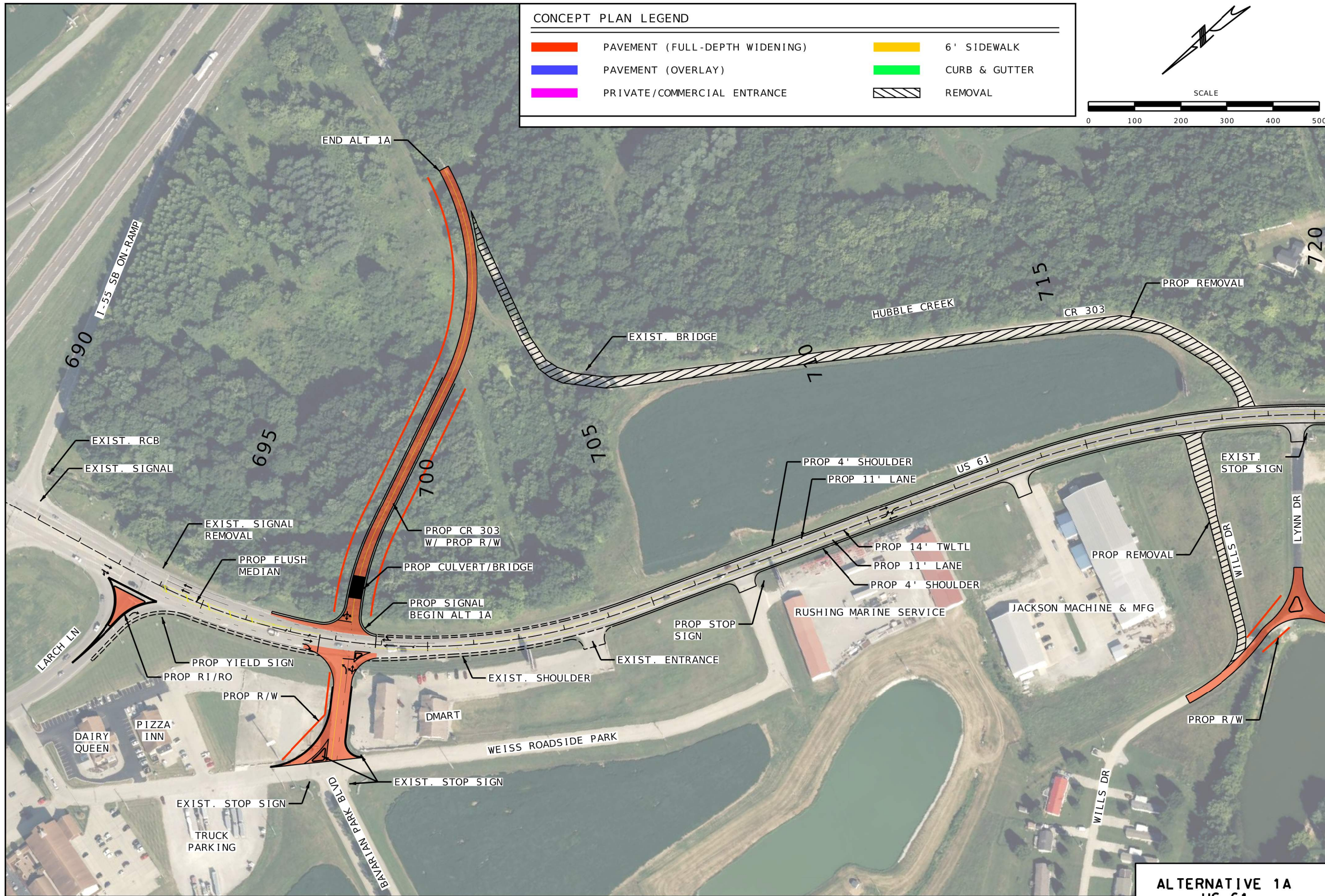
MISSOURI HIGHWAYS AND TRANSPORTATION
 COMMISSION

 105 WEST CAPITOL
 JEFFERSON CITY, MO 65102
 1-888-ASK-MODOT (1-888-275-6636)

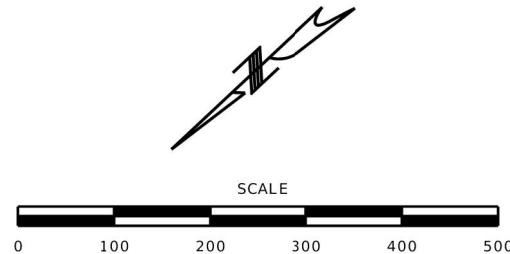
GBA
 16305 Swingley Ridge Rd
 Ste. 300
 Chesterfield, MO 63017
 314.231.0100
 GBAteam.com

GEORGE BUTLER
 ASSOCIATES, INC.
 PRO. ENGINEER 000133
 ARCHITECT 000212
 PRO. LAND SURVEYOR 000059

NIKKI D. CONLEY
 PROFESSIONAL
 ENGINEER
 PE-2018040668



CONCEPT PLAN LEGEND			
	PAVEMENT (FULL-DEPTH WIDENING)		6' SIDEWALK
	PAVEMENT (OVERLAY)		CURB & GUTTER
	PRIVATE/COMMERCIAL ENTRANCE		REMOVAL



CONCEPT PLANS NOT APPROVED FOR CONSTRUCTION

DATE	
DATE PREPARED	10/6/2023
ROUTE	61
STATE	MO
DISTRICT	SE
SHEET NO.	ALT 1A
COUNTY	CAPE GIRARDEAU
JOB NO.	J9P3450
CONTRACT ID.	
PROJECT NO.	
BRIDGE NO.	

DESCRIPTION	DATE

MISSOURI HIGHWAYS AND TRANSPORTATION COMMISSION

105 WEST CAPITOL
JEFFERSON CITY, MO 65102
1-888-ASK-MODOT (1-888-275-6636)

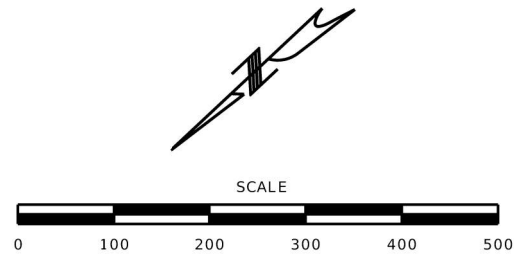
GBA

16305 Swingley Ridge Rd
Ste. 300
Chesterfield, MO 63017
314-231-0100
GBAteam.com

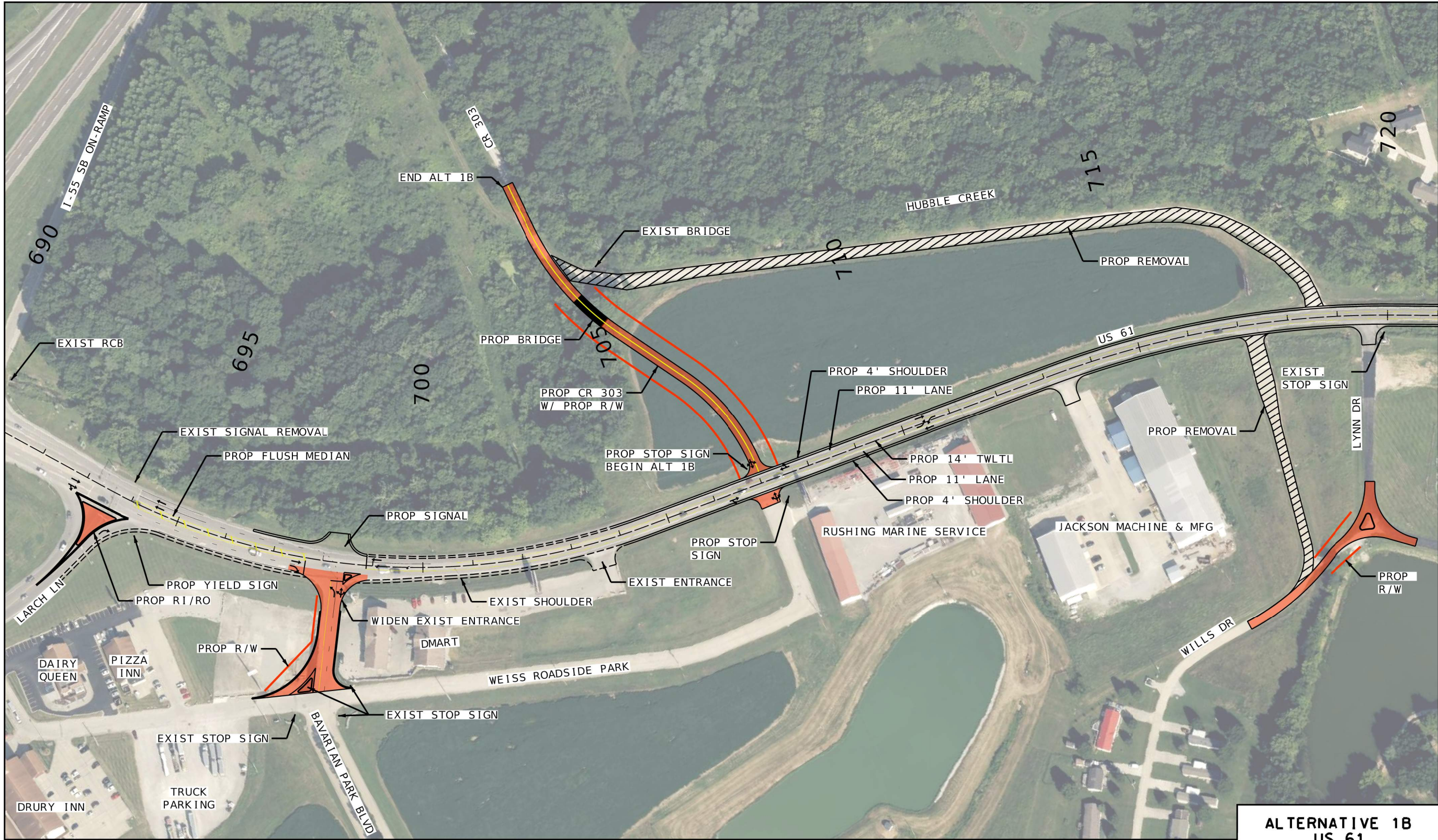
GEORGE BUTLER ASSOCIATES, INC.
PRO. ENGINEER 000133
ARCHITECT 000212
PRO. LAND SURVEYOR 000059

NIKKI D. CONLEY
PROFESSIONAL ENGINEER
PE-2018040668

**ALTERNATIVE 1A
US 61
SHEET 1 OF 1**



CONCEPT PLAN LEGEND			
	PAVEMENT (FULL-DEPTH WIDENING)		6' SIDEWALK
	PAVEMENT (OVERLAY)		CURB & GUTTER
	PRIVATE/COMMERCIAL ENTRANCE		REMOVAL



ALTERNATIVE 1B
US 61
SHEET 1 OF 1

CONCEPT PLANS
NOT APPROVED FOR CONSTRUCTION

DATE	
10/6/2023	
ROUTE	STATE
61	MO
DISTRICT	SHEET NO.
SE	ALT 1B
COUNTY	
CAPE GIRARDEAU	
JOB NO.	
J9P3450	
CONTRACT ID.	
PROJECT NO.	
BRIDGE NO.	

DESCRIPTION	DATE

MISSOURI HIGHWAYS AND TRANSPORTATION COMMISSION

105 WEST CAPITOL
 JEFFERSON CITY, MO 65102
 1-888-ASK-MODOT (1-888-275-6636)

GBA
 16305 Swingley Ridge Rd
 Ste. 300
 Chesterfield, MO 63017
 314.231.0100
 GBAteam.com

GEORGE BUTLER ASSOCIATES, INC.
 PRO. ENGINEER 000133
 ARCHITECT 000212
 PRO. LAND SURVEYOR 000059

NIKKI D. CONLEY
 PROFESSIONAL ENGINEER
 PE-2018040668

**CONCEPT PLANS
NOT APPROVED FOR
CONSTRUCTION**

DATE

DATE PREPARED
10/6/2023

ROUTE STATE
61 MO

DISTRICT SHEET NO.
SE ALT 2

COUNTY
CAPE GIRARDEAU

JOB NO.
J9P3450

CONTRACT ID.

PROJECT NO.

BRIDGE NO.

DESCRIPTION	DATE

MISSOURI HIGHWAYS AND TRANSPORTATION COMMISSION

105 WEST CAPITOL
JEFFERSON CITY, MO 65102
1-888-ASK-MODOT (1-888-275-6636)

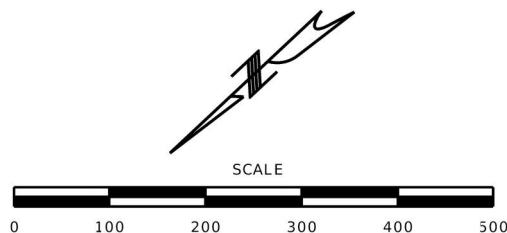
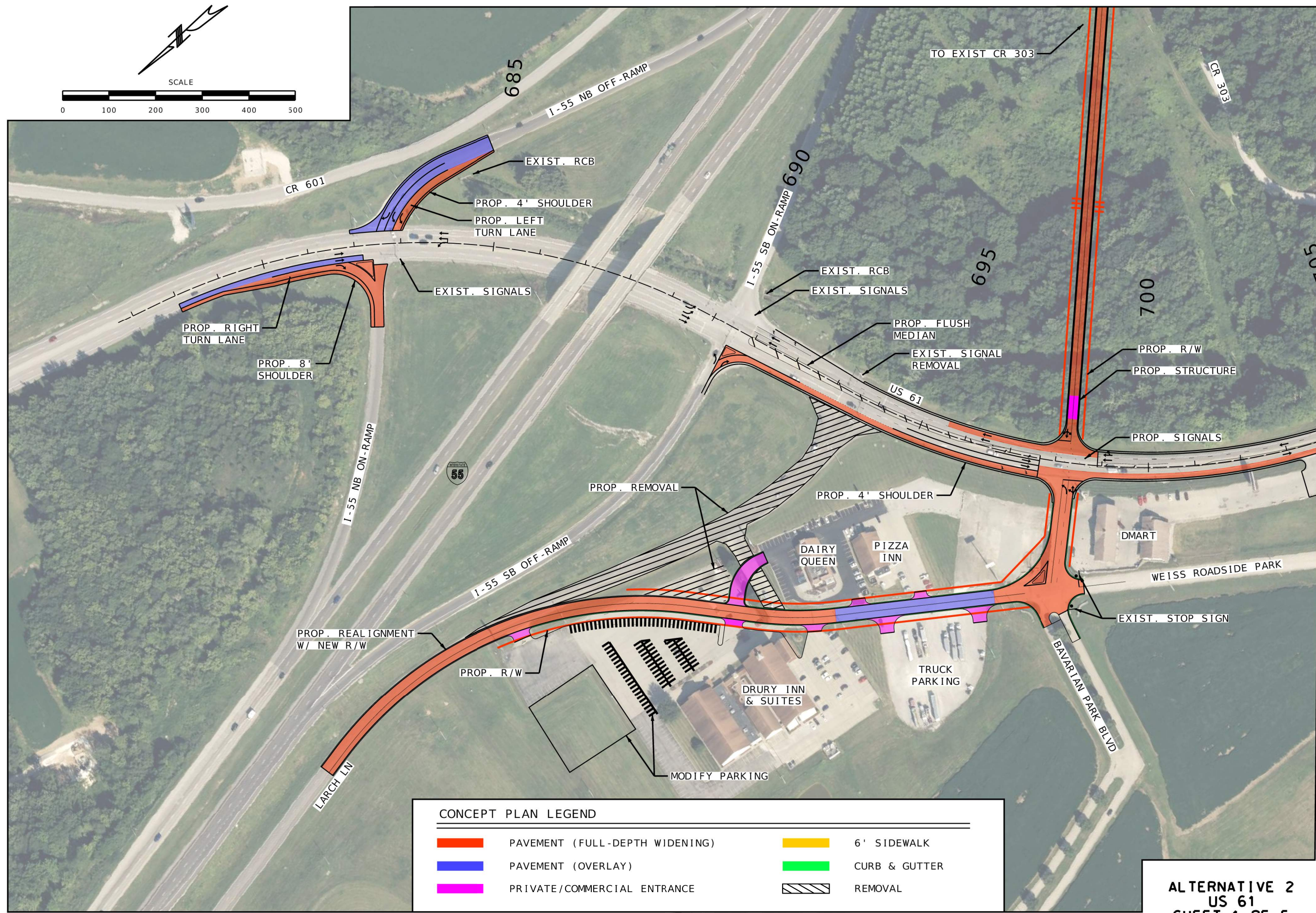


GBA
16305 Swingley Ridge Rd
Ste. 300
Chesterfield, MO 63017
314.231.0100
GBATeam.com






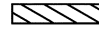
GEORGE BUTLER ASSOCIATES, INC.
PRO. ENGINEER 000133
ARCHITECT 000212
PRO. LAND SURVEYOR 000059

NIKKI D. CONLEY
PROFESSIONAL ENGINEER
PE-2018040668

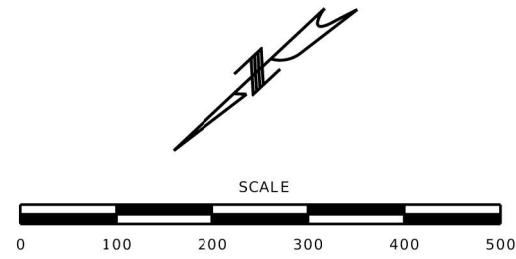
IF A SEAL IS PRESENT ON THIS SHEET IT HAS BEEN ELECTRONICALLY SEALED AND DATED.



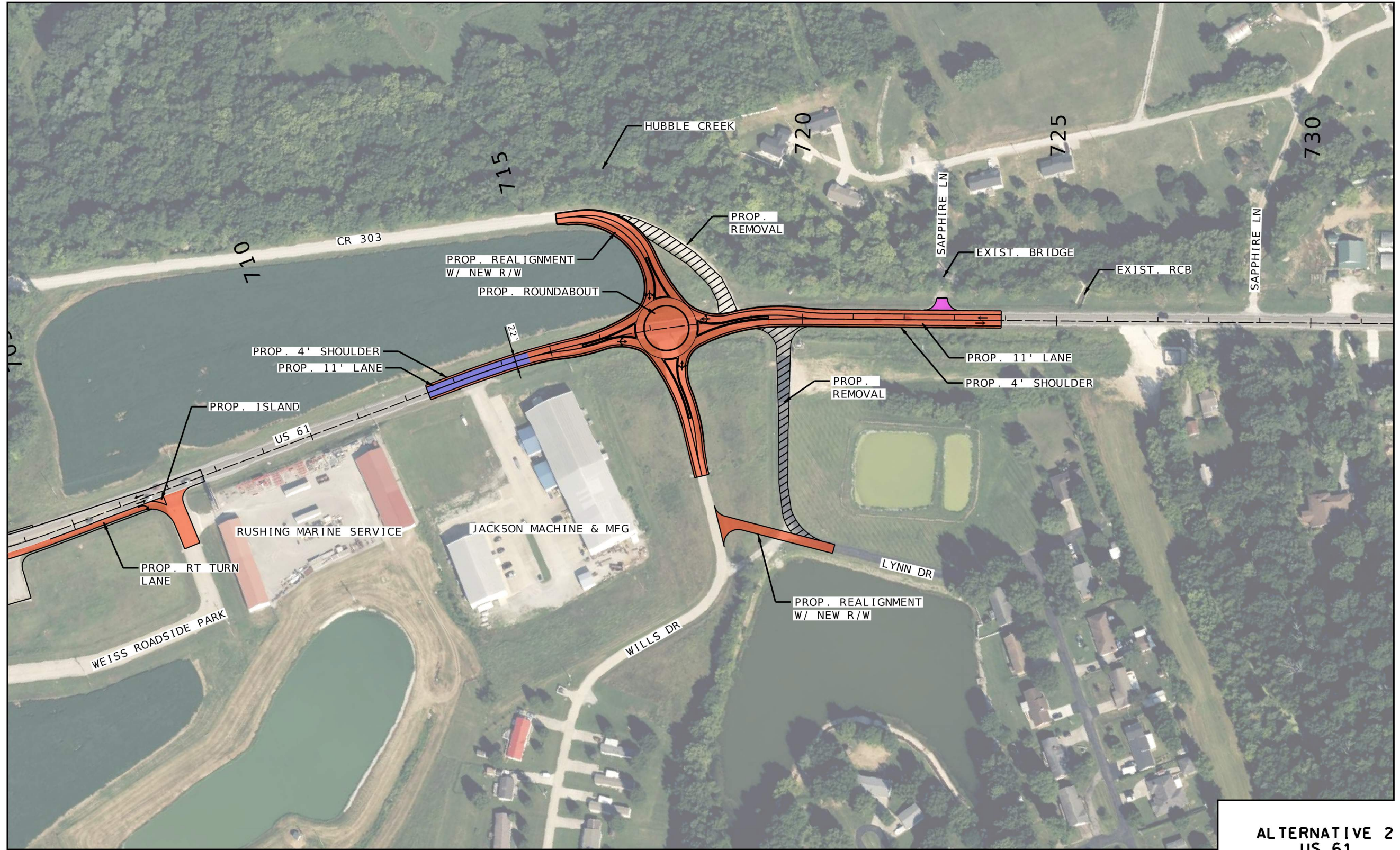
CONCEPT PLAN LEGEND

	PAVEMENT (FULL-DEPTH WIDENING)		6' SIDEWALK
	PAVEMENT (OVERLAY)		CURB & GUTTER
	PRIVATE/COMMERCIAL ENTRANCE		REMOVAL

**ALTERNATIVE 2
US 61
SHEET 1 OF 5**



CONCEPT PLAN LEGEND			
	PAVEMENT (FULL-DEPTH WIDENING)		6' SIDEWALK
	PAVEMENT (OVERLAY)		CURB & GUTTER
	PRIVATE/COMMERCIAL ENTRANCE		REMOVAL



ALTERNATIVE 2
US 61
SHEET 2 OF 5

CONCEPT PLANS
NOT APPROVED FOR CONSTRUCTION

DATE	
DATE PREPARED	10/6/2023
ROUTE	61
STATE	MO
DISTRICT	SE
SHEET NO.	ALT 2
COUNTY	
CAPE GIRARDEAU	
JOB NO.	
J9P3450	
CONTRACT ID.	
PROJECT NO.	
BRIDGE NO.	

DESCRIPTION	DATE

MISSOURI HIGHWAYS AND TRANSPORTATION COMMISSION

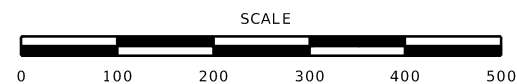
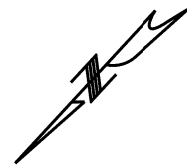
105 WEST CAPITOL
 JEFFERSON CITY, MO 65102
 1-888-ASK-MODOT (1-888-275-6636)

GBA

16305 Swingley Ridge Rd
 Ste. 300
 Chesterfield, MO 63017
 314.231.0100
 GBAteam.com

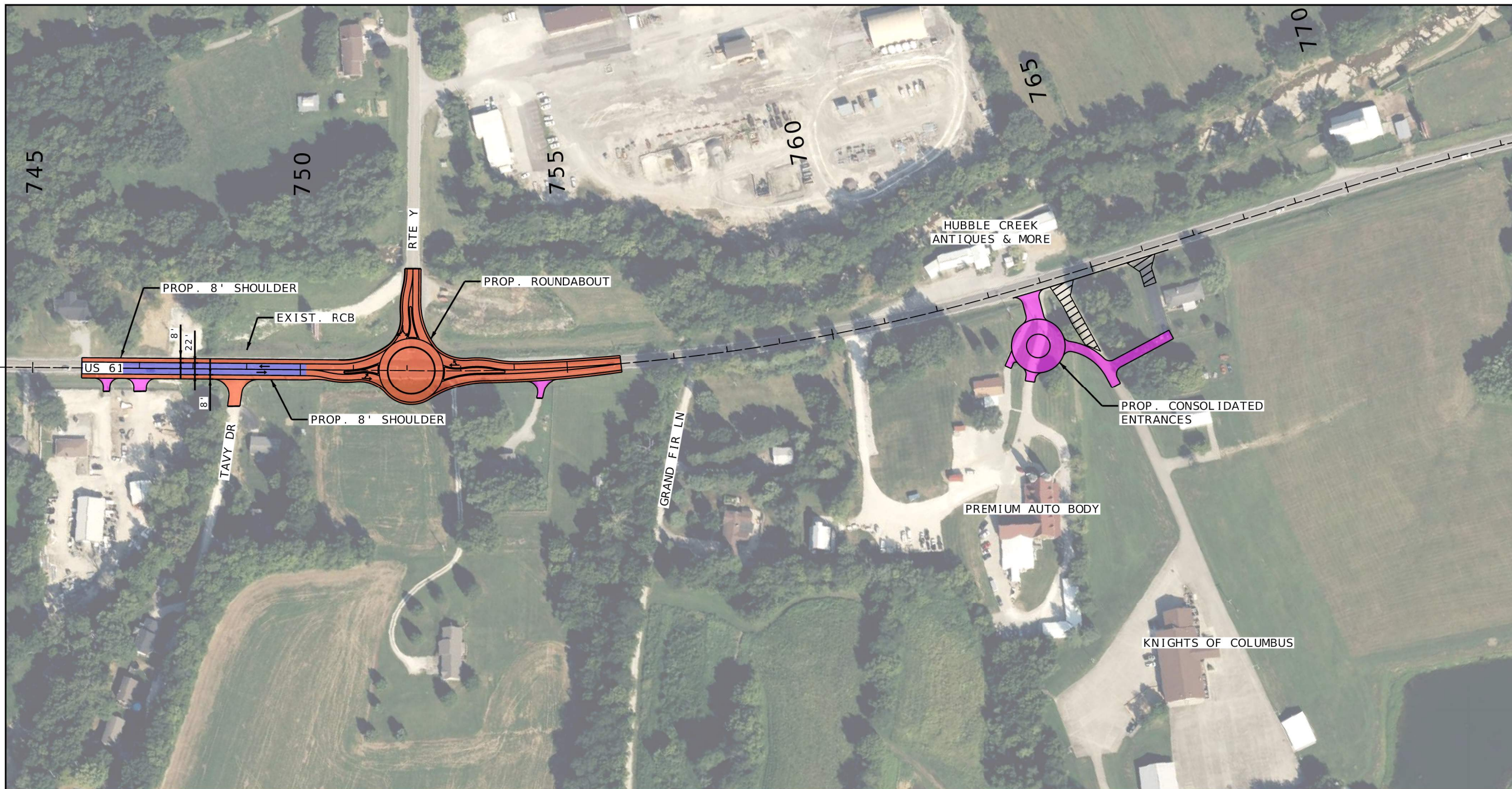
GEORGE BUTLER
 ASSOCIATES, INC.
 PRO. ENGINEER 000133
 ARCHITECT 000212
 PRO. LAND SURVEYOR 00059

NIKKI D. CONLEY
 PROFESSIONAL ENGINEER
 PE-2018040668



CONCEPT PLAN LEGEND

- PAVEMENT (FULL-DEPTH WIDENING)
- PAVEMENT (OVERLAY)
- PRIVATE/COMMERCIAL ENTRANCE
- 6' SIDEWALK
- CURB & GUTTER
- REMOVAL



ALTERNATIVE 2
US 61
SHEET 3 OF 5

CONCEPT
PLANS
NOT APPROVED
FOR
CONSTRUCTION

DATE	
10/6/2023	
ROUTE	STATE
61	MO
DISTRICT	SHEET NO.
SE	ALT 2
COUNTY	
CAPE GIRARDEAU	
JOB NO.	
J9P3450	
CONTRACT ID.	

PROJECT NO.
BRIDGE NO.

DATE	DESCRIPTION

MISSOURI HIGHWAYS AND TRANSPORTATION
COMMISSION

105 WEST CAPITOL
JEFFERSON CITY, MO 65102
1-888-ASK-MODOT (1-888-275-6636)

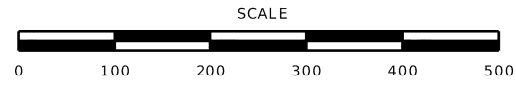
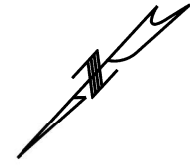
GBA

16305 Swingley Ridge Rd
Ste. 300
Chesterfield, MO 63017
314.231.0100
GBATeam.com

GEORGE BUTLER
ASSOCIATES, INC.
PRO. ENGINEER 000133
ARCHITECT 000212
PRO. LAND SURVEYOR 000059

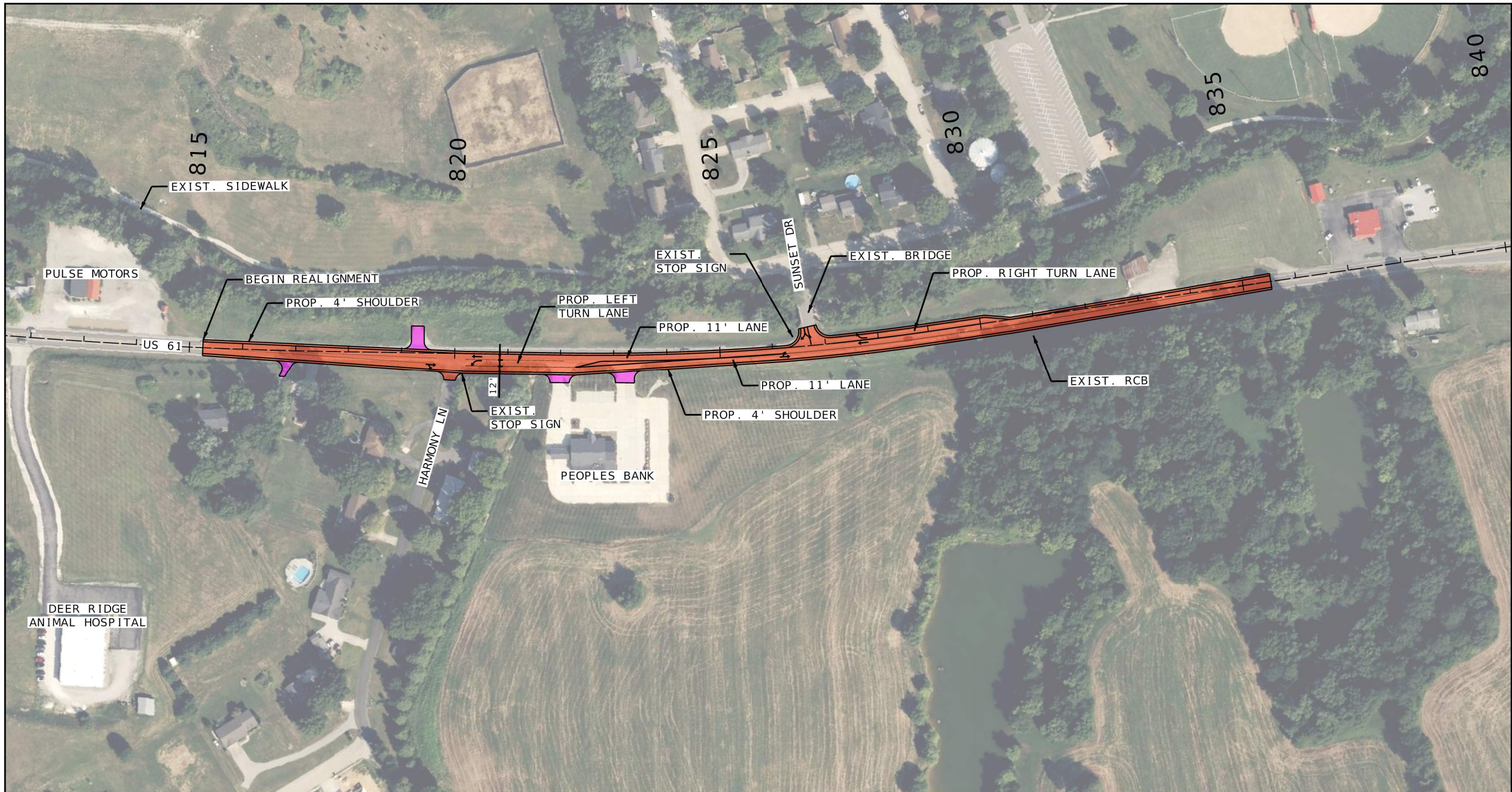
NIKKI D. CONLEY
PROFESSIONAL
ENGINEER
PE-2018040668

IF A SEAL IS PRESENT ON THIS SHEET IT HAS BEEN ELECTRONICALLY SEALED AND DATED.



CONCEPT PLAN LEGEND

- PAVEMENT (FULL-DEPTH WIDENING)
- 6' SIDEWALK
- PAVEMENT (OVERLAY)
- CURB & GUTTER
- PRIVATE / COMMERCIAL ENTRANCE




ALTERNATIVE 2
US 61
SHEET 4 OF 5

CONCEPT
PLANS
NOT APPROVED
FOR
CONSTRUCTION

DATE	
DATE PREPARED 10/6/2023	
ROUTE 61	STATE MO
DISTRICT SE	SHEET NO. ALT 2
COUNTY CAPE GIRARDEAU	
JOB NO. J9P3450	
CONTRACT ID.	
PROJECT NO.	
BRIDGE NO.	

DESCRIPTION	DATE

MISSOURI HIGHWAYS AND TRANSPORTATION
COMMISSION



105 WEST CAPITOL
JEFFERSON CITY, MO 65102
1-888-ASK-MODOT (1-888-275-6636)

GBA

16305 Swingley Ridge Rd
Ste. 300
Chesterfield, MO 63017
314.231.0100
GBATeam.com

GEORGE BUTLER
ASSOCIATES- INC.
PRO. ENGINEER 000133
ARCHITECT 000212
PRO. LAND SURVEYOR 000059

NIKKI D. CONLEY
PROFESSIONAL
ENGINEER
PE-2018040668

IF A SEAL IS PRESENT ON THIS SHEET IT HAS BEEN ELECTRONICALLY SEALED AND DATED.

CONCEPT PLAN LEGEND

- PAVEMENT (FULL-DEPTH WIDENING)
- 6' SIDEWALK
- CURB & GUTTER



CONCEPT PLANS NOT APPROVED FOR CONSTRUCTION

DATE PREPARED 10/6/2023	
ROUTE 61	STATE MO
DISTRICT SE	SHEET NO. ALT 2
COUNTY CAPE GIRARDEAU	
JOB NO. J9P3450	
CONTRACT ID.	
PROJECT NO.	
BRIDGE NO.	

DESCRIPTION	DATE

MISSOURI HIGHWAYS AND TRANSPORTATION COMMISSION

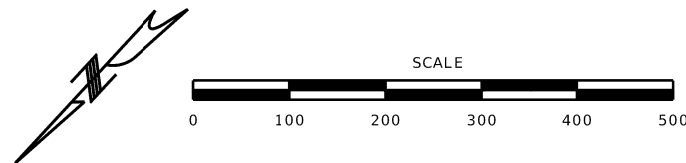
105 WEST CAPITOL
JEFFERSON CITY, MO 65102
1-888-ASK-MODOT (1-888-275-6636)

GBA
16305 Swingley Ridge Rd
Ste. 300
Chesterfield, MO 63017
314.231.0100
GBAteam.com

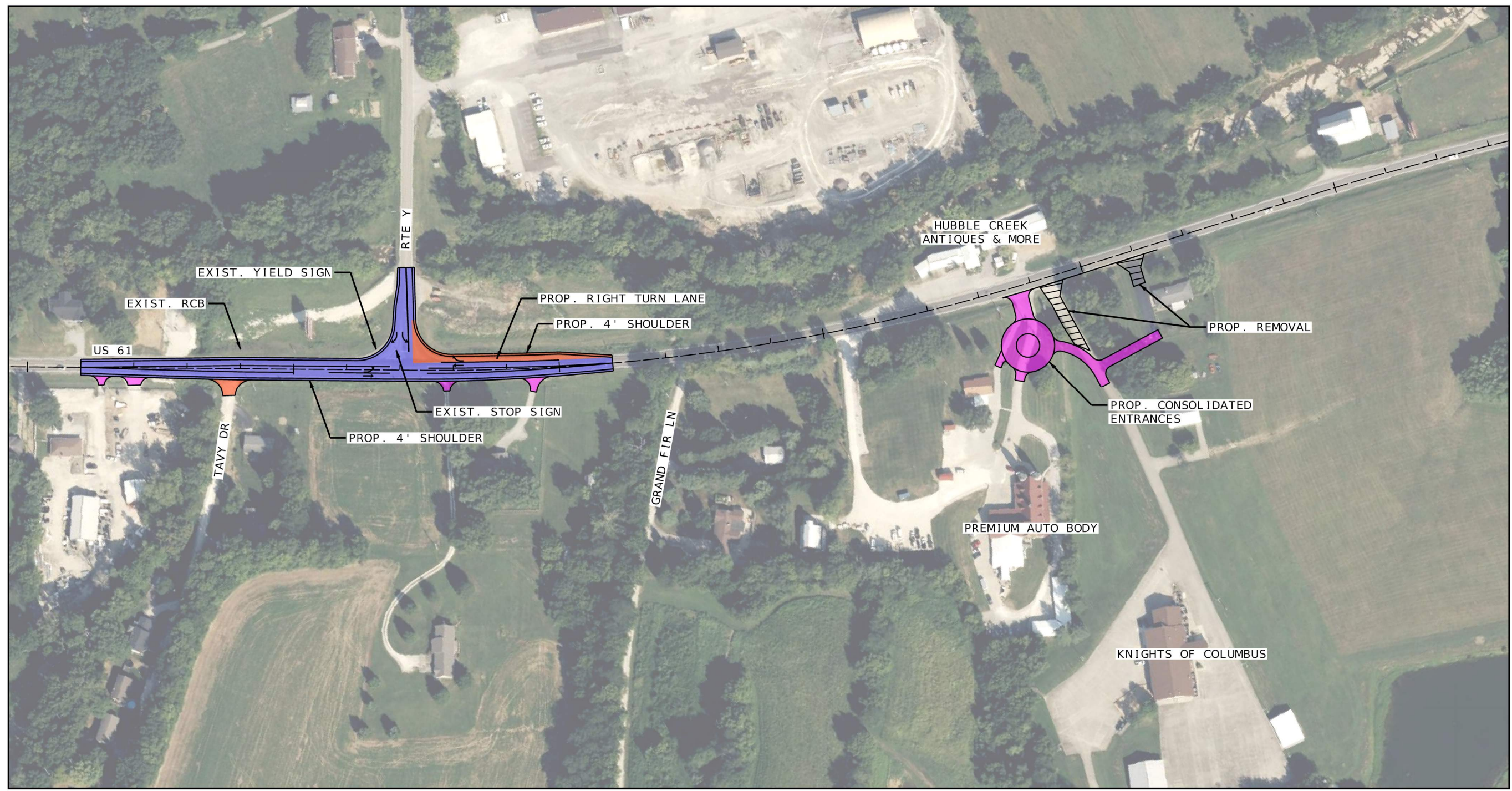
GEORGE BUTLER ASSOCIATES, INC.
PRO. ENGINEER 000133
ARCHITECT 000212
PRO. LAND SURVEYOR 000099

NIKKI D. CONLEY
PROFESSIONAL ENGINEER
PE-2018040668

ALTERNATIVE 2
US 61
SHEET 5 OF 5



CONCEPT PLAN LEGEND			
	PAVEMENT (FULL-DEPTH WIDENING)		6' SIDEWALK
	PAVEMENT (OVERLAY)		CURB & GUTTER
	PRIVATE/COMMERCIAL ENTRANCE		REMOVAL



**CONCEPT PLANS
NOT APPROVED FOR
CONSTRUCTION**

DATE	
10/6/2023	
ROUTE	STATE
61	MO
DISTRICT	SHEET NO.
SE	ALT 2A
COUNTY	
CAPE GIRARDEAU	
JOB NO.	
J9P3450	
CONTRACT ID.	
PROJECT NO.	
BRIDGE NO.	

DATE	DESCRIPTION

MISSOURI HIGHWAYS AND TRANSPORTATION COMMISSION

105 WEST CAPITOL
JEFFERSON CITY, MO 65102
1-888-ASK-MODOT (1-888-275-6636)

GBA

16305 Swingley Ridge Rd
Ste. 300
Chesterfield, MO 63017
314.231.0100
GBATeam.com

GEORGE BUTLER
ASSOCIATES, INC.
PRO. ENGINEER 000133
ARCHITECT 000212
PRO. LAND SURVEYOR 000059

NIKKI D. CONLEY
PROFESSIONAL
ENGINEER
PE-2018040668

**ALTERNATIVE 2A
US 61
SHEET 1 OF 1**

IF A SEAL IS PRESENT ON THIS SHEET IT HAS BEEN ELECTRONICALLY SEALED AND DATED.