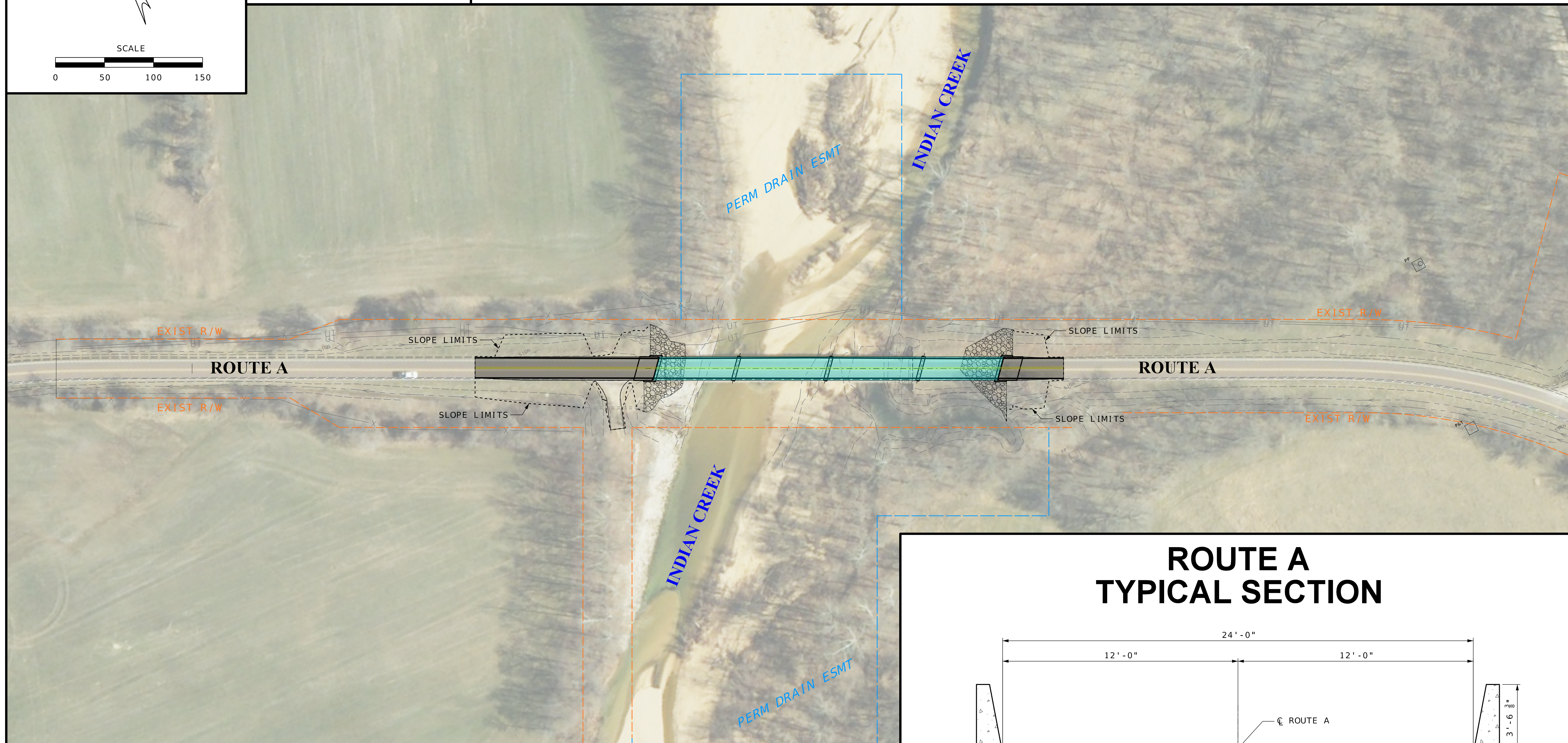
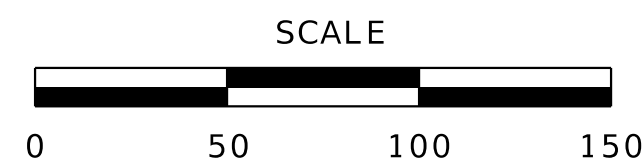
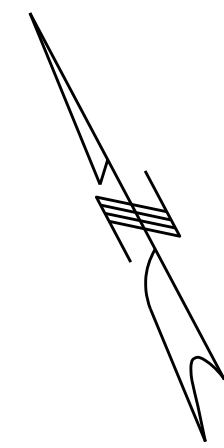




# ROUTE A BRIDGE REPLACEMENT OVER INDIAN CREEK

## WASHINGTON COUNTY

### PRELIMINARY PLANS - SUBJECT TO CHANGE



#### LEGEND

- EXISTING RIGHT OF WAY LINE
- EXISTING PERMANENT DRAINAGE EASEMENT
- SLOPE LIMITS

- PROPOSED ROADWAY RECONSTRUCTION
- PROPOSED BRIDGE
- AGGREGATE ROCK BLANKET

#### ROUTE A TYPICAL SECTION

