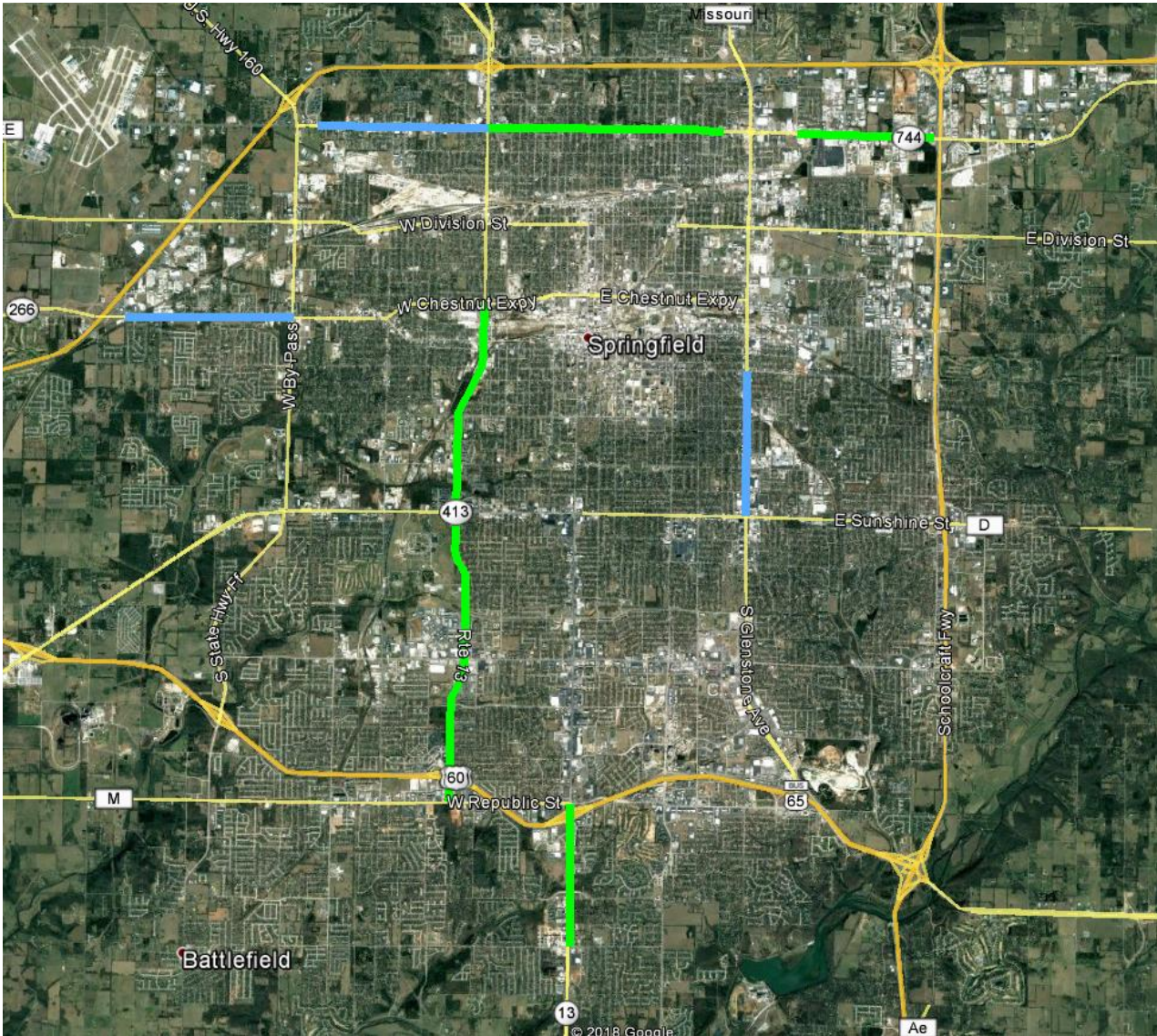


J8S3145 – Scoping for safety improvements on Kearney St. from Airport to LeCompte Ave.

These are notes from the Southwest District Traffic Department that provides information on some of the issues/features on Kearney Street. This is not a list of proposed improvements for the corridor, nor is it in a prioritized list.

- As part of an agreement with Bluebird, they have fiber running in some of our existing conduit along Kearney in exchange for giving us fiber in new conduit they are installing. Could be a significant issue if conduit/pull boxes need to be moved.



- Green: MoDOT Conduit
- Blue: Bluebird Conduit

Ideas Applicable to All Signals in this section of Kearney:

- In general all Street Name signing has been in place since 2003's Smooth Roads Initiative effort (some exceptions affected by smaller previous projects)
- Consider pavement condition in terms of driving surface and vehicle detector reliability on all approaches. (i.e. concrete cracks, spalling, multiple generation detector loop sawcuts, etc.)
- Ensure lighting is sufficient for intersection and any island noses
- Loop detection at all locations unless noted otherwise

Kearney @ West Bypass

- Constructed 1962, partially reconstructed since that time. Portions of original conduit system still in use.
- Wavetronix Radar Detection
- A reconstruction project is currently in design stages

Utility Service Grading	Cabinet Grading	Controller Grading	Detection Grading	Signal Supports Grading	Signal/PED Head Grading	Pull Box Grading	Lighting Grading	Battery Backup Grading
4	4	4	4	4	4	4	4	4

Kearney @ Cresthaven

- Constructed 2006. No known issues
- Currently a T intersection. Sight distance is on the line for current speed, but with opposing left turn we could install a 4-section FYA for the WB Left turn and run it permissive during decreased traffic volumes (Currently a 3 section)

Utility Service Grading	Cabinet Grading	Controller Grading	Detection Grading	Signal Supports Grading	Signal/PED Head Grading	Pull Box Grading	Lighting Grading	Battery Backup Grading
4	4	4	4	4	4	4	0	0

Kearney @ Fulbright

- Built in 1999 by MoDOT Signal Crew with salvage posts/arms, so the equipment is a little older than records might indicate.
- Controller cabinet foundation has settled out of plumb.
- Conduit/pull box improvements would be necessary if adding ADA compliant pedestrian features (Peds needed).

- FYA conversion needed

Utility Service Grading	Cabinet Grading	Controller Grading	Detection Grading	Signal Supports Grading	Signal/PED Head Grading	Pull Box Grading	Lighting Grading	Battery Backup Grading
3	5	4	4	4	4	4	0	0

Kearney @ Kansas Expressway

- Originally signaled in 1971, complete reconstruction with dual LT lanes in 2004. Further ADA adjustments recently.
- Detection system recently upgraded to Wavetronix microwave system

Utility Service Grading	Cabinet Grading	Controller Grading	Detection Grading	Signal Supports Grading	Signal/PED Head Grading	Pull Box Grading	Lighting Grading	Battery Backup Grading
4	4	4	5	4	4	4	4	4

Kearney @ Broadway

- Originally constructed 1958
- Signal partially reconstructed recently but crowded onto existing ROW. Pedestrian signals were added at that time, but crosswalks and sidewalks are less than ADA perfect. Parts of the original conduit system are still in use, over capacity, and may be impassible.

Utility Service Grading	Cabinet Grading	Controller Grading	Detection Grading	Signal Supports Grading	Signal/PED Head Grading	Pull Box Grading	Lighting Grading	Battery Backup Grading
5	5	5	4	5	5	5	0	5

Kearney @ Grant

- Originally constructed 1952
- Signal somewhat recently reconstructed. Pedestrian signals were added at that time, but crosswalks and sidewalks are less than ADA perfect. Parts of the original conduit system are still in use, over capacity, and may be impassible.
- FYA conversion needed
- NB alignment could be improved

Utility Service Grading	Cabinet Grading	Controller Grading	Detection Grading	Signal Supports Grading	Signal/PED Head Grading	Pull Box Grading	Lighting Grading	Battery Backup Grading
5	4	5	3	5	4	5	0	0

Kearney @ Summit

- Constructed 1975
- A very low traffic volume signal even with Baptist Bible College nearby. There is limited sight distance looking East and this hill causes Maintenance to sometimes place this signal in flashing operation during Winter weather events.
- Currently has a first generation Polara audible pedestrian system installed, but has several ADA deficiencies.
- Existing conduit system is limited. There are no known issues, but capacity would make it difficult to get any additional cables installed.

Utility Service Grading	Cabinet Grading	Controller Grading	Detection Grading	Signal Supports Grading	Signal/PED Head Grading	Pull Box Grading	Lighting Grading	Battery Backup Grading
5	5	5	5	5	5	5	0	0

Kearney @ National

- Constructed 1951
- A complete rebuild is warranted here, with utilities and limited ROW being major challenges.
- All four signal posts are hit frequently by turning trucks and busses.
- Rumored potential of a City of Springfield, cost-shared, dual-left turn lane improvement project has caused uncertainty for several years on how much maintenance time and money to invest in this signal.
- Needs EB/WB Right turn lanes
- FYA Conversion needed

Utility Service Grading	Cabinet Grading	Controller Grading	Detection Grading	Signal Supports Grading	Signal/PED Head Grading	Pull Box Grading	Lighting Grading	Battery Backup Grading
4	5	5	4	1	5	5	0	0

Kearney @ Delaware

- Originally constructed 1984
- Signal somewhat recently partially reconstructed. Pedestrian signals were added at that time. No other known signal infrastructure issues, but conduit system includes some remnants of the 1984 signal installation.
- FYA Conversion needed

Utility Service Grading	Cabinet Grading	Controller Grading	Detection Grading	Signal Supports Grading	Signal/PED Head Grading	Pull Box Grading	Lighting Grading	Battery Backup Grading
5	5	5	5	5	5	5	0	0

Kearney @ Glenstone (project currently in design phases for this intersection)

- Originally signalized in 1958, complete reconstruction with dual LT lanes in 2004.
- Detection system recently upgraded to Wavetronix microwave system

Utility Service Grading	Cabinet Grading	Controller Grading	Detection Grading	Signal Supports Grading	Signal/PED Head Grading	Pull Box Grading	Lighting Grading	Battery Backup Grading
5	5	5	5	4	5	5	5	5

Kearney @ Barnes

- Constructed 1990
- Signal somewhat recently partially reconstructed. Pedestrian signals were added at that time. Underground work was not well done. Conduits were hit in a couple of places at different stages of sidewalk construction. This signal is not in bad shape overall, but nothing else can be added without some conduit work, especially at and around the control cabinet.
- Needs a new power supply assembly large enough to supply signal cabinet and ITS cabinet. Signal does not currently have Battery Backup.
- FYA conversion needed

Utility Service Grading	Cabinet Grading	Controller Grading	Detection Grading	Signal Supports Grading	Signal/PED Head Grading	Pull Box Grading	Lighting Grading	Battery Backup Grading
3	5	5	5	5	5	5	5	0

Kearney @ Neergard

- Constructed 2002
- This is a relatively new signal, with no known issues, but has undergone an ADA pedestrian addition project. Unsure how this remodel affected the existing conduits.

Utility Service Grading	Cabinet Grading	Controller Grading	Detection Grading	Signal Supports Grading	Signal/PED Head Grading	Pull Box Grading	Lighting Grading	Battery Backup Grading
5	5	5	3	4	5	5	5	5

Kearney @ Packer

- Constructed 2018
- A new traffic signal, with no known infrastructure issues.

Utility Service Grading	Cabinet Grading	Controller Grading	Detection Grading	Signal Supports Grading	Signal/PED Head Grading	Pull Box Grading	Lighting Grading	Battery Backup Grading
5	5	5	5	5	5	5	0	5

Kearney @ Mayfair

- Constructed 1998
- Wood pole span signal seriously needs replacement with a mast arm signal. Existing poles are rotting just below ground level. Two have had to be replaced since the original signal construction in 1998. Challenging overhead conflicts with electric lines.
- Potential development on south side of intersection could add a new approach

Kearney @ US 65 SB Ramp

- Constructed 1987
- Wavetronix Radar Detection

Utility Service Grading	Cabinet Grading	Controller Grading	Detection Grading	Signal Supports Grading	Signal/PED Head Grading	Pull Box Grading	Lighting Grading	Battery Backup Grading
5	5	5	5	5	5	5	5	0

Kearney @ US 65 NB Ramp

- Constructed 1987
- Wavetronix Radar Detection
- The median mounted signal supporting EB and part of the NB signals is frequently hit.
- The protected/permissive EBLT should be studied as it crosses three oncoming traffic lanes

Utility Service Grading	Cabinet Grading	Controller Grading	Detection Grading	Signal Supports Grading	Signal/PED Head Grading	Pull Box Grading	Lighting Grading	Battery Backup Grading
5	5	5	5	4	5	5	5	0

Kearney @ LeCompte

- Constructed 2004

- There were some questionable installation practices regarding the conduit system when this signal was built. The island cut-throughs and pedestrian signals were added later and there are some very shallow conduits as a result. This hasn't been a problem to date but could be an extra challenge for ADA adjustments.
- FYA Conversion

Utility Service Grading	Cabinet Grading	Controller Grading	Detection Grading	Signal Supports Grading	Signal/PED Head Grading	Pull Box Grading	Lighting Grading	Battery Backup Grading
5	4	1	4	5	5	5	5	0