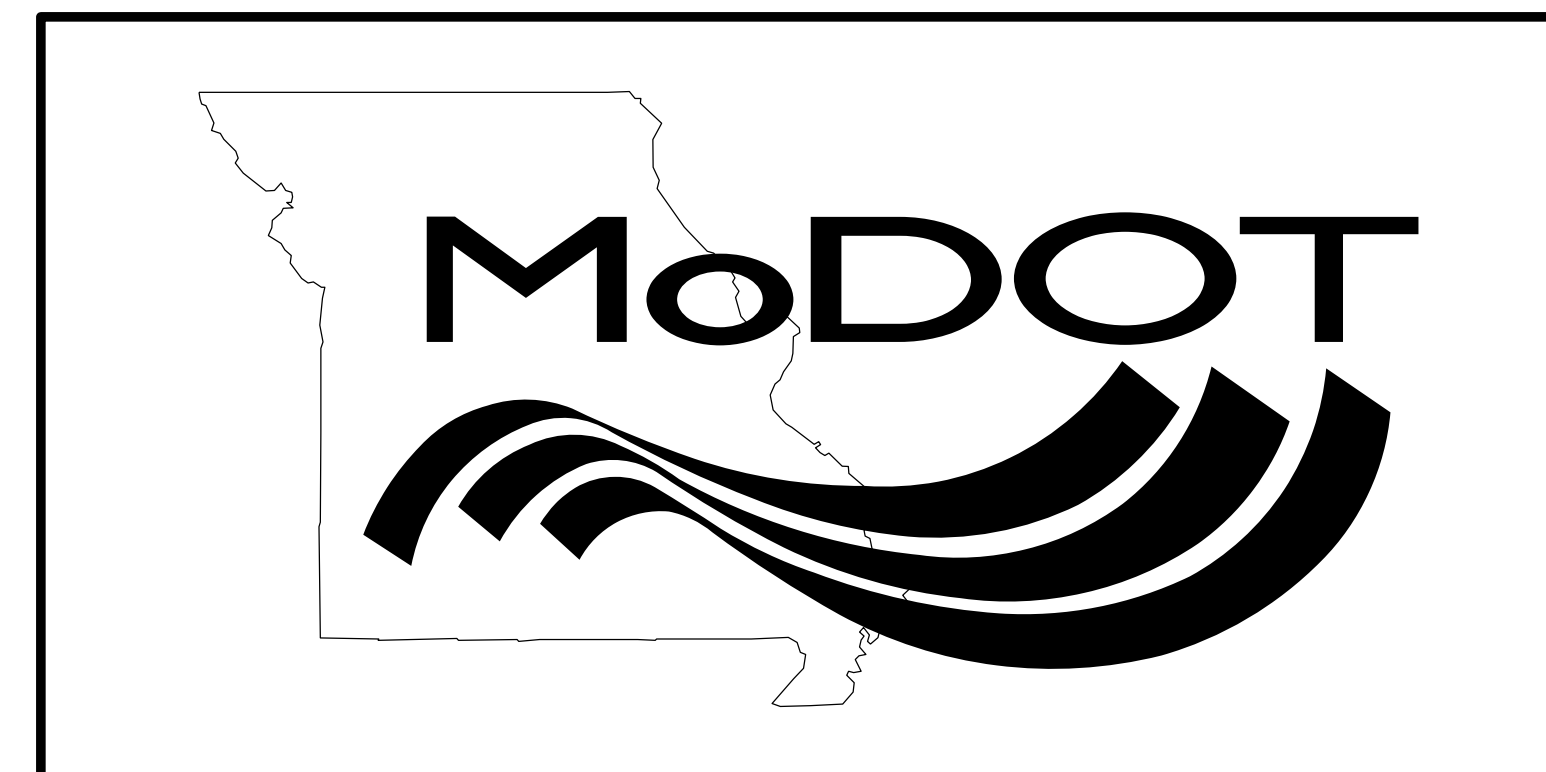


# PROJECT LOCATION MAP



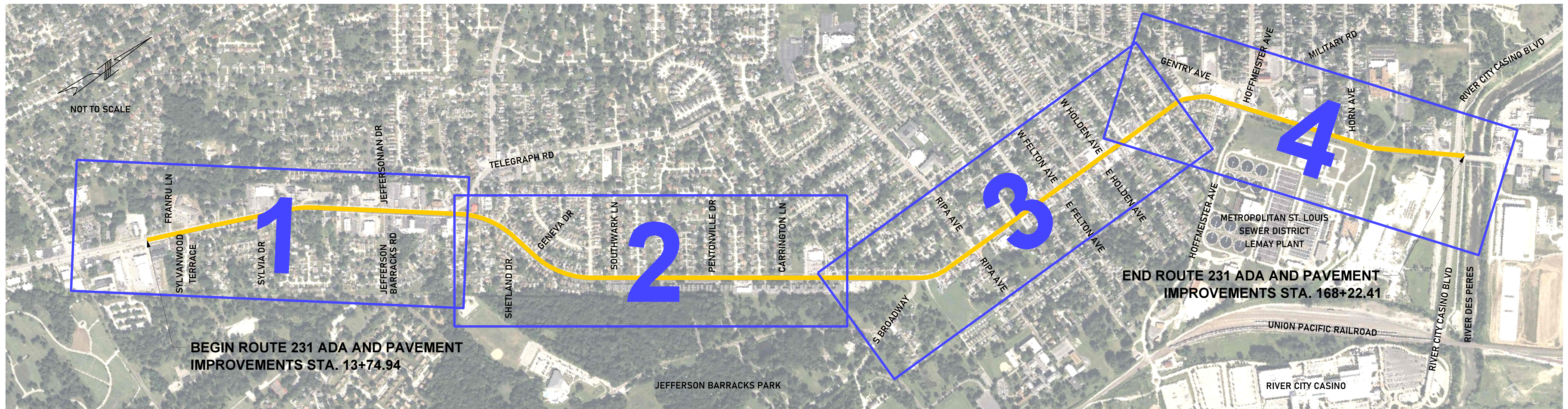
**ROUTE 231 ADA AND PAVEMENT IMPROVEMENTS  
FRANRU LANE TO RIVER CITY CASINO BOULEVARD**

**ST. LOUIS COUNTY  
CONCEPTUAL PLAN**

MODOT JOB NO. J6S3631

## LEGEND

|                      |  |
|----------------------|--|
| ROUTE 231 CENTERLINE |  |
| BOARD NUMBER         |  |



## ROUTE 231

NOT TO SCALE  
PROJECT LENGTH = 2.926 MILES