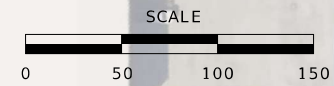
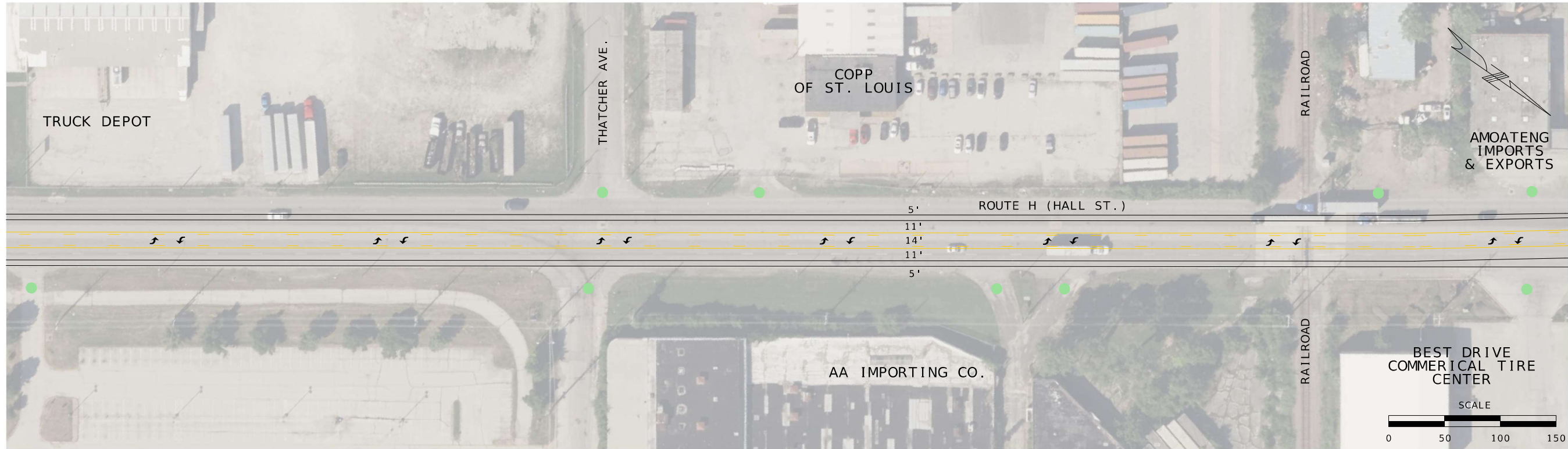
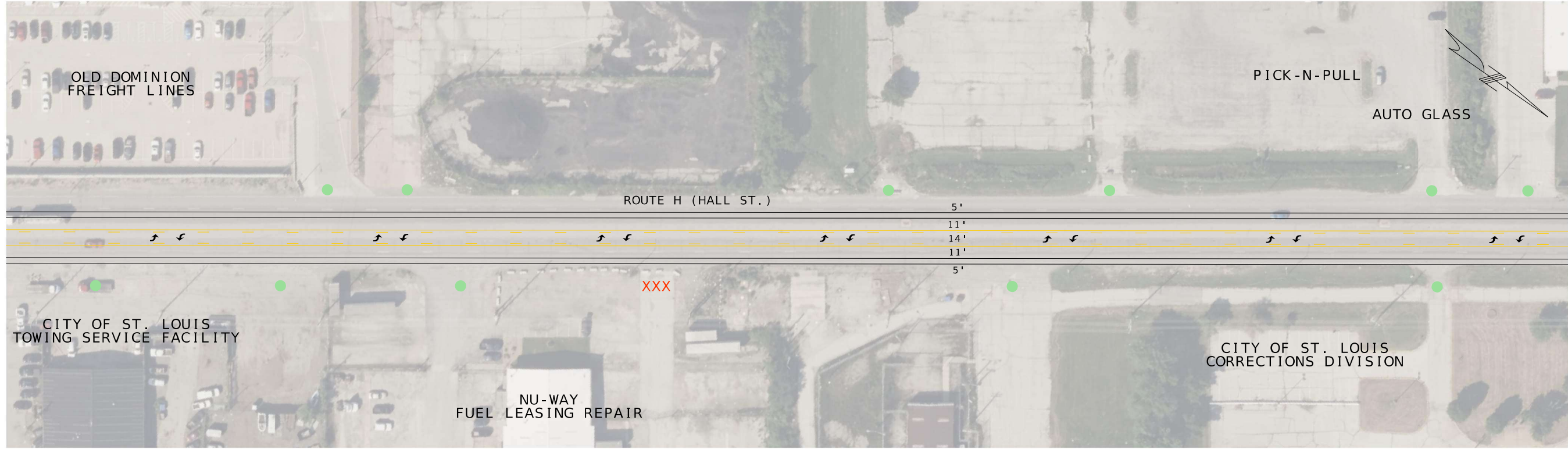


- LEGEND
- ACCESS OPEN
 - XXX ACCESS CLOSED



DATE PREPARED	
20- JUN-2023	
ROUTE	STATE
H	MO
DISTRICT	SHEET NO.
SL	4
COUNTY	
ST. LOUIS CITY	
JOB NO.	
J6S3278	
CONTRACT ID.	

PROJECT NO.

BRIDGE NO.

DATE	DESCRIPTION

MISSOURI HIGHWAYS AND TRANSPORTATION COMMISSION

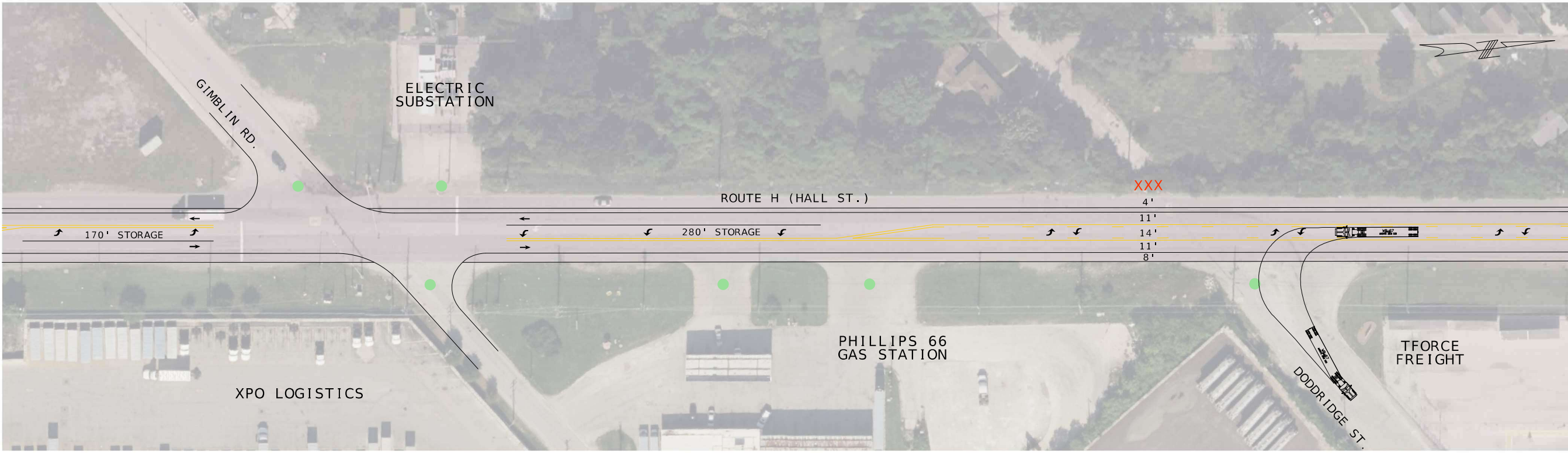
105 WEST CAPITOL
JEFFERSON CITY, MO 65102
1-888-ASK-MODOT (1-888-275-6636)

JACOBS ENGINEERING GROUP
501 NORTH BROADWAY
ST. LOUIS, MISSOURI 63102-2121
PHONE: 314.355.0000
FAX: 314.355.0000
CERTIFICATE OF AUTHORITY #00704

IF A SEAL IS PRESENT ON THIS SHEET IT HAS BEEN ELECTRONICALLY SEALED AND DATED.

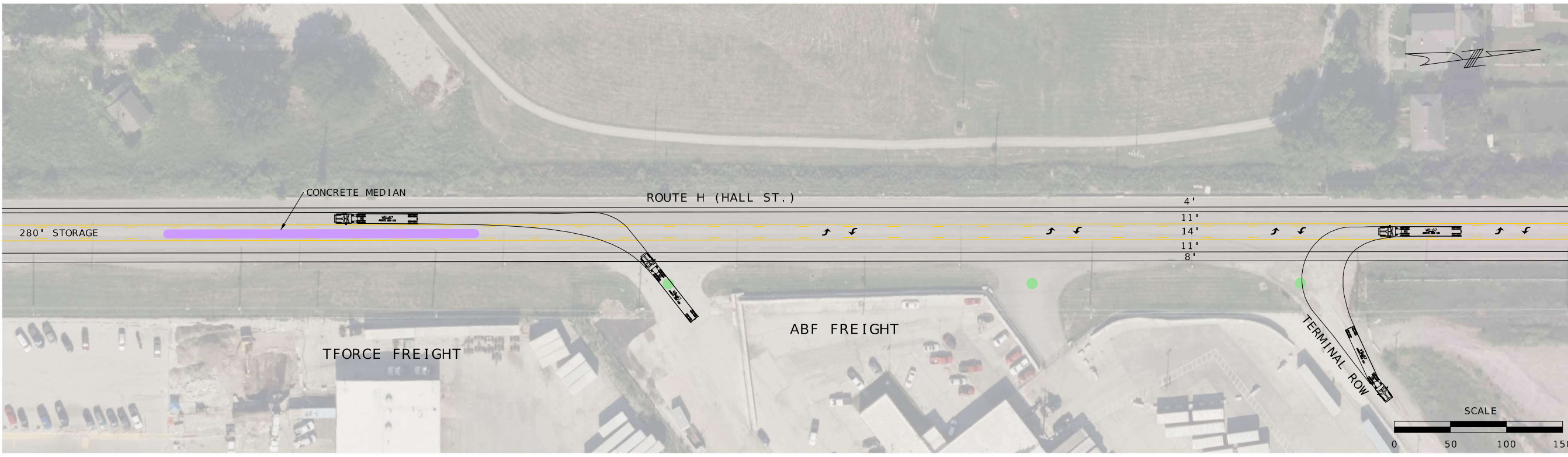
LEGEND
 ● ACCESS OPEN
 XXX ACCESS CLOSED

MATCH LINE (PREVIOUS SHEET)



MATCH LINE

MATCH LINE



MATCH LINE (NEXT SHEET)

DATE PREPARED 15-JUN-2023	
ROUTE H	STATE MO
DISTRICT SL	SHEET NO. 6
COUNTY ST. LOUIS CITY	
JOB NO. J6S3278	
CONTRACT ID.	
PROJECT NO.	
BRIDGE NO.	
DATE	DESCRIPTION
MISSOURI HIGHWAYS AND TRANSPORTATION COMMISSION	
105 WEST CAPITOL JEFFERSON CITY, MO 65102 1-888-ASK-MODOT (1-888-275-6636)	
JACOBS ENGINEERING GROUP 501 NORTH BROADWAY ST. LOUIS, MISSOURI 63102-2121 PHONE: 314.396.5000 CERTIFICATE OF AUTHORITY #00704	

IF A SEAL IS PRESENT ON THIS SHEET IT HAS BEEN ELECTRONICALLY SEALED AND DATED.

LEGEND
 ● ACCESS OPEN
 XXX ACCESS CLOSED



MATCH LINE



MATCH LINE

DATE PREPARED		20-JUN-2023	
ROUTE	H	STATE	MO
DISTRICT	SL	SHEET NO.	7
COUNTY			
ST. LOUIS CITY			
JOB NO.			
J6S3278			
CONTRACT ID.			

PROJECT NO.
BRIDGE NO.

DATE	DESCRIPTION

MISSOURI HIGHWAYS AND TRANSPORTATION COMMISSION

105 WEST CAPITOL
 JEFFERSON CITY, MO 65102
 1-888-ASK-MODOT (1-888-275-6636)

JACOBS ENGINEERING GROUP
 501 NORTH BROADWAY
 ST. LOUIS, MISSOURI 63102-2121
 PHONE: 314.396.5000
 FACSIMILE: 314.396.5001
 CERTIFICATE OF AUTHORITY #00704

IF A SEAL IS PRESENT ON THIS SHEET IT HAS BEEN ELECTRONICALLY SEALED AND DATED.