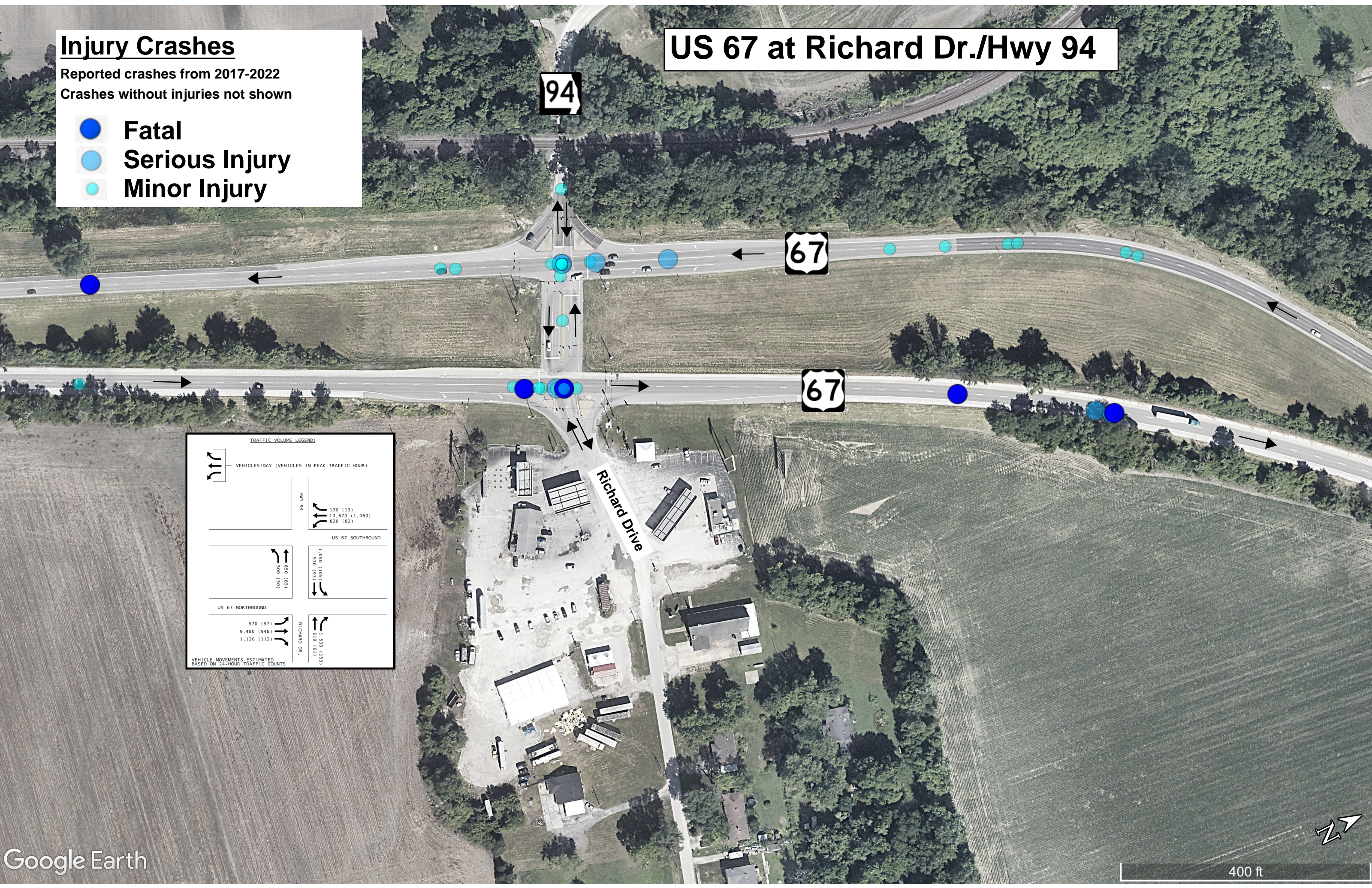


Injury Crashes

Reported crashes from 2017-2022
Crashes without injuries not shown

- Fatal
- Serious Injury
- Minor Injury

US 67 at Richard Dr./Hwy 94



TRAFFIC VOLUME LEGEND:

VEHICLES/DAY (VEHICLES IN PEAK TRAFFIC HOUR)

Direction	Vehicle Movements (24-Hour)	Peak Hour
HWY 94 (Northbound)	130 (13)	10,670 (1,060)
HWY 94 (Southbound)	820 (82)	10,670 (1,060)
US 67 SOUTHBOUND	650 (65)	930 (93)
US 67 NORTHBOUND	570 (57)	930 (93)
RICHARD DR.	1,530 (153)	610 (61)

VEHICLE MOVEMENTS ESTIMATED BASED ON 24-HOUR TRAFFIC COUNTS

