

DESIGN DESIGNATION

A.A.D.T. - 20XX = XXXX
 A.A.D.T. - 20XX = XXXX
 D.H.V. = XX%
 T = XX%
 V = XX M.P.H.
 D = XX%

FUNCTIONAL CLASSIFICATION- COLLECTOR

TEMPORARY EASEMENT TO BE ACQUIRED

MISSOURI HIGHWAYS AND TRANSPORTATION COMMISSION

PLANS FOR PROPOSED STATE HIGHWAY

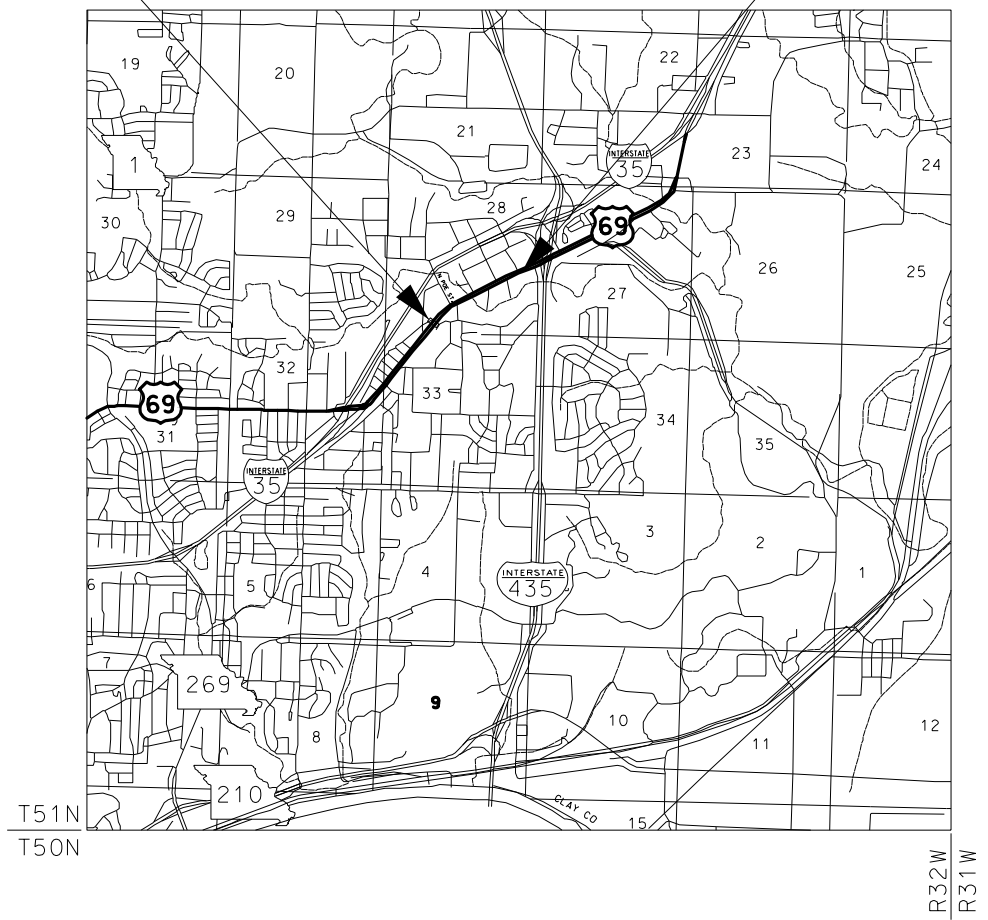
CLAY COUNTY



JOB NO. J4P3465

REMOVE EX. PED CROSSOVER BRIDGE AT US69
AND BUILD SIDEWALK ALONG
SOUTHSIDE OF US69

BEGIN PROJECT STA. 219+52.15
 END PROJECT STA. 256+98.75



CONVENTIONAL SYMBOLS

(USED IN PLANS)

	EXISTING	NEW
BUILDINGS AND STRUCTURES		
GUARD RAIL		
GUARD CABLE		
CONCRETE RIGHT-OF-WAY MARKER		
STEEL RIGHT-OF-WAY MARKER		
LOCATION SURVEY MARKER		
UTILITIES		
FIBER OPTICS	-FO-	FO
OVERHEAD CABLE TV	-OTV-	OTV
UNDERGROUND CABLE TV	-UTV-	UTV
OVERHEAD TELEPHONE	-OT-	OT
UNDERGROUND TELEPHONE	-UT-	UT
OVERHEAD POWER	-OE-	OE
UNDERGROUND POWER	-UE-	UE
SANITARY SEWER	-S-	S
STORM SEWER	-SS-	SS
GAS	-G-	G
WATER	-W-	W
MANHOLE		
FIRE HYDRANT		
WATER VALVE		
WATER METER		
DROP INLET		
DITCH BLOCK		
GROUND MOUNTED SIGN		
LIGHT POLE		
H-FRAME POWER POLE		
TELEPHONE PEDESTAL		
FENCE		
CHAIN LINK		
WOVEN WIRE		
GATE POST		
BENCHMARK		

NOT TO SCALE

THE EXISTENCE AND APPROXIMATE LOCATION OF UTILITY FACILITIES KNOWN TO EXIST, AS SHOWN ON THE PLANS, ARE BASED ON THE BEST INFORMATION AVAILABLE TO THE COMMISSION AT THIS TIME. THIS INFORMATION IS PROVIDED BY THE COMMISSION "AS-IS" AND THE COMMISSION EXPRESSLY DISCLAIMS ANY REPRESENTATION OR WARRANTY AS TO THE COMPLETENESS, ACCURACY, OR SUITABILITY OF THE INFORMATION FOR ANY USE. RELIANCE UPON THIS INFORMATION IS DONE AT THE RISK AND PERIL OF THE USER, AND THE COMMISSION SHALL NOT BE LIABLE FOR ANY DAMAGES THAT MAY ARISE FROM ANY ERROR IN THE INFORMATION. IT IS, THEREFORE, THE RESPONSIBILITY OF THE CONTRACTOR TO VERIFY THE EXISTENCE, LOCATION AND STATUS OF ANY FACILITY. SUCH VERIFICATION INCLUDES DIRECT CONTACT WITH THE LISTED UTILITIES.

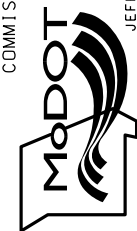
INDEX OF SHEETS

DESCRIPTION	SHEET NUMBER
TITLE SHEET -----	1
TYPICAL SECTIONS (TS) (XX SHEETS)---	2
QUANTITIES (QU) (XX SHEETS)-----	3
PLAN-PROFILE (PP)-----	4-XX
RIGHT OF WAY (RW)-----	XX-XX
REFERENCE POINTS (RP)-----	XX-XX
COORDINATE POINTS (CP)-----	XX-XX
SPECIAL SHEETS (SS)-----	XX-XX
TRAFFIC CONTROL SHEETS (TC)-----	XX-XX
EROSION CONTROL SHEETS (EC)-----	XX-XX
LIGHTING (LT)-----	XX-XX
SIGNALS (SG)-----	XX-XX
SIGNING (SN)-----	XX-XX
PAVEMENT MARKING (PM)-----	XX-XX
CULVERT SECTIONS (CS)-----	XX-XX
BRIDGE DRAWINGS (B)	
A####-----	XX-XX
A####-----	XX-XX
A####-----	XX-XX
A####-----	XX-XX
CROSS SECTIONS (XS)-----	XX-XX

LENGTH OF PROJECT

BEGINNING OF PROJECT	STA. 222 + 45.00
END OF PROJECT	STA. 256 + 98.75
APPARENT LENGTH	3746.60 FEET
EQUATIONS AND EXCEPTIONS:	
BRIDGE A5570	125.00 FEET
TOTAL CORRECTIONS	125.00 FEET
NET LENGTH OF PROJECT	3621.60 FEET
STATE LENGTH	00.686 MILES
FOR INFORMATION ONLY	00.450 ACRES
ESTIMATED DISTURBED AREA	

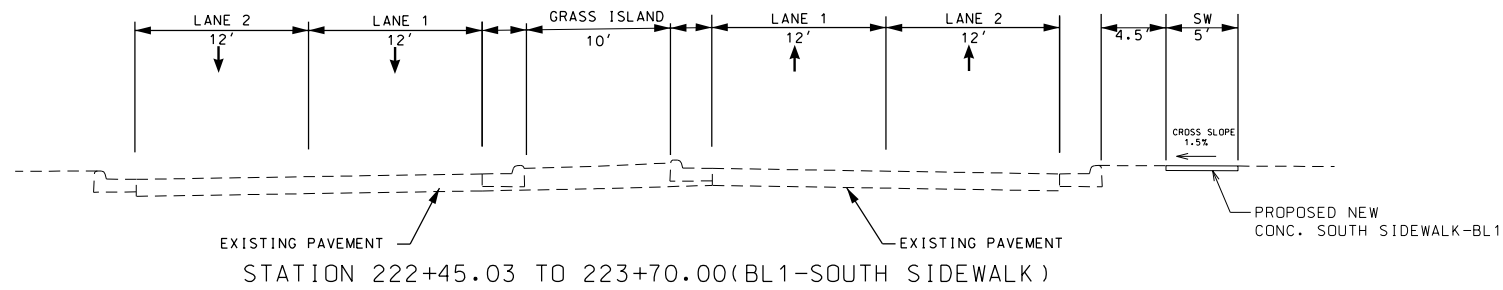
MISSOURI HIGHWAYS AND TRANSPORTATION COMMISSION



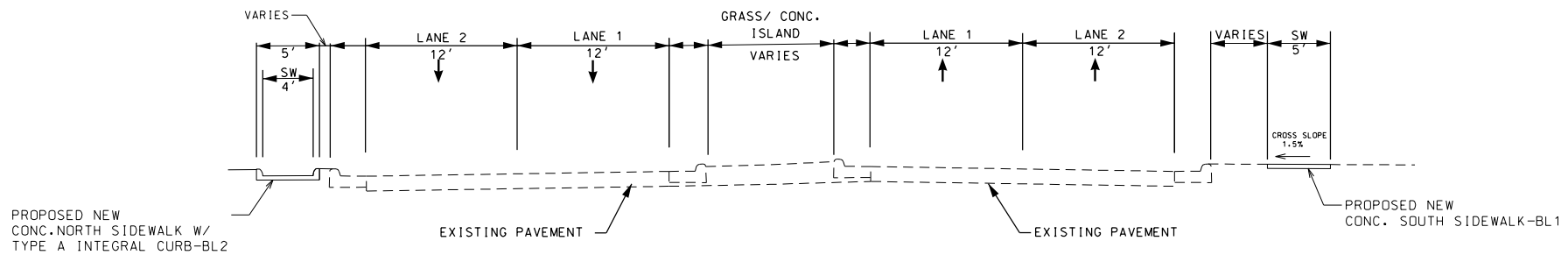
105 WEST CAPITOL
JEFFERSON CITY, MO 65102
1-888-ASK-MODOT (1-888-275-6636)

DATE PREPARED 4/5/2022	
ROUTE 69	STATE MO
DISTRICT KC	SHEET NO. 1
COUNTY CLAY	
JOB NO. J4P3465	
CONTRACT ID.	
PROJECT NO.	
BRIDGE NO.	
DESCRIPTION	DATE

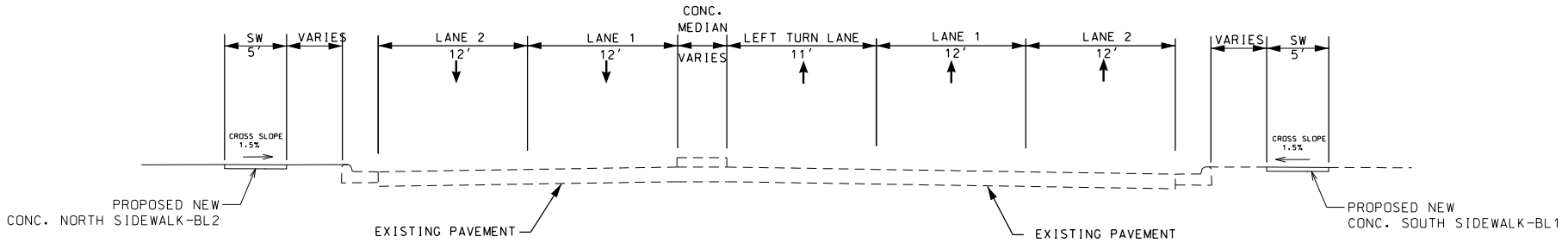
IF A SEAL IS PRESENT ON THIS SHEET IT HAS BEEN ELECTRONICALLY SEALED AND DATED.



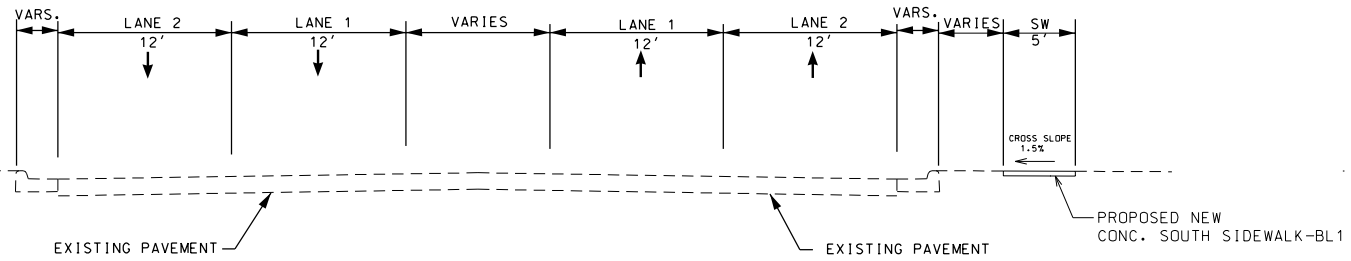
STATION 222+45.03 TO 223+70.00 (BL1-SOUTH SIDEWALK)



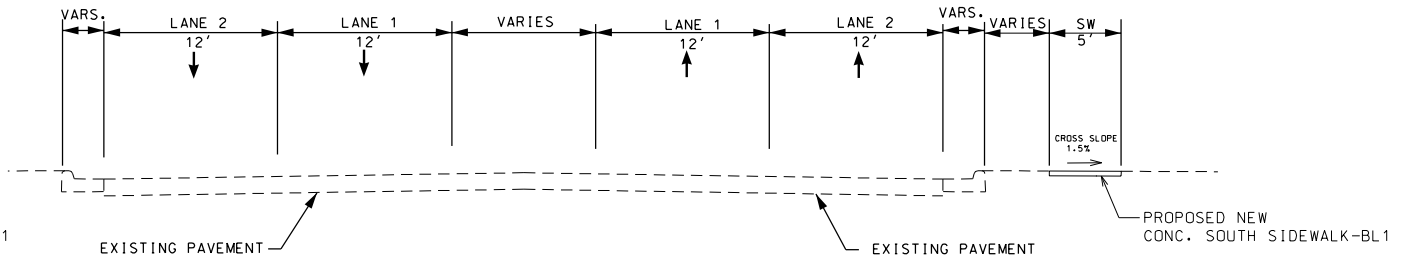
STATION 224+13.00 TO 225+50.65 (BL1-SOUTH SIDEWALK)
 STATION 224+72.05 TO 226+31.25 (BL2-NORTH SIDEWALK)
 (EXCLUDE ALL ENTRANCES)



STATION 225+94.22 TO 228+78.79 (BL1-SOUTH SIDEWALK)
 226+80.95 TO 229+74.82 (BL2-NORTH SIDEWALK)
 (EXCLUDE ALL ENTRANCES AND STREETS)



STATION 229+79.47 TO 235+32.47 (BL1-SOUTH SIDEWALK)
 (EXCLUDE ALL ENTRANCES, STREETS)




STATION 236+57.53 TO 256+86.04 (BL1-SOUTH SIDEWALK)
 (EXCLUDE ALL ENTRANCES, STREETS)

NOTE:
 ALL ENTRANCES AND SIGN RELOCATIONS ARE STATIONED OFF OF RTE. 69 CENTER LINE (CL-US69)
 ALL SIDEWALKS ARE STATIONED OFF OF THE SIDEWALK BASE LINE
 (BL1 - SOUTH SIDEWALK & BL2- NORTH SIDEWALK)

NOT TO SCALE

TYPICAL SECTION SHEET
 SHEET 1 OF 1

DATE PREPARED 4/5/2022	
ROUTE 69	STATE MO
DISTRICT KC	SHEET NO. 2
COUNTY CLAY	
JOB NO. J4P3465	
CONTRACT ID.	
PROJECT NO.	
BRIDGE NO.	
DESCRIPTION	
DATE	
MISSOURI HIGHWAYS AND TRANSPORTATION COMMISSION	 105 WEST CAPITOL JEFFERSON CITY, MO 65102 1-888-ASK-MODOT (1-888-275-6636)

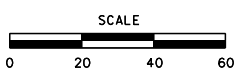
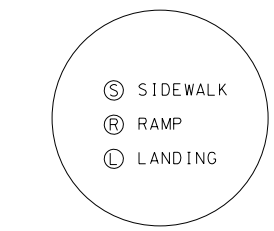
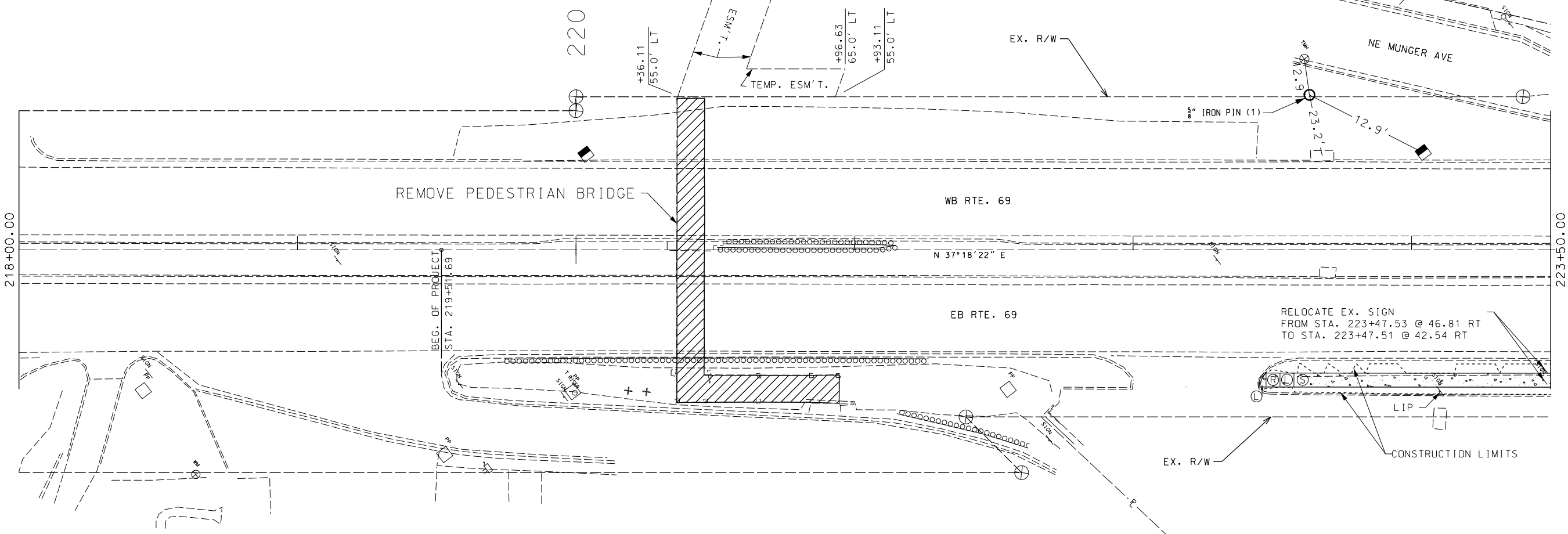
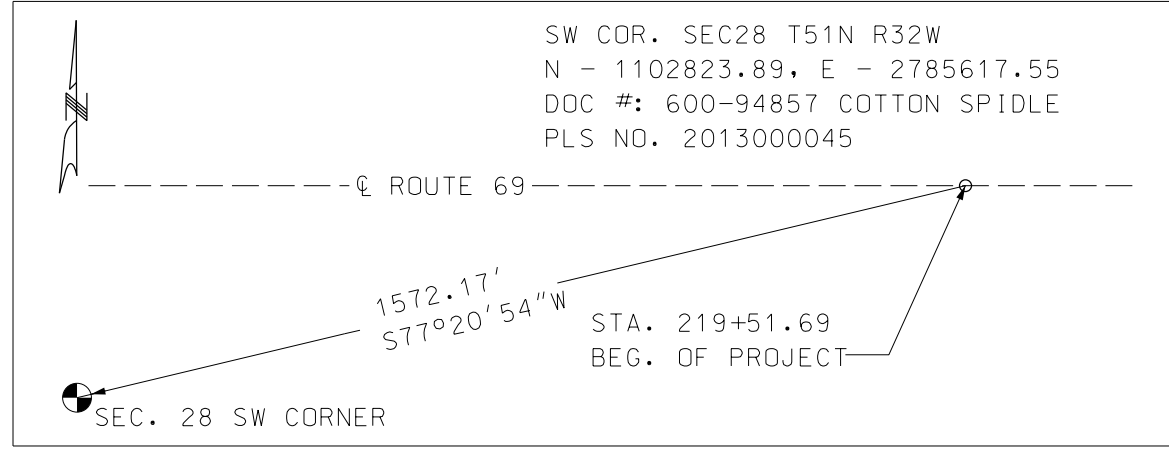
IF A SEAL IS PRESENT ON THIS SHEET IT HAS BEEN ELECTRONICALLY SEALED AND DATED.

SW COR. SEC28 T51N R32W
 N - 1102823.89, E - 2785617.55
 DOC #: 600-94857 COTTON SPIDLE
 PLS NO. 2013000045

SW 1/4 SW 1/4
 SEC28 T51N R32W

LITRELL RAYMOND
 CHRISTOPHER

① KMS ENTERPRISES LLC.
 TEMP. ESM'T.: 1530.55 SQFT
 REMAINING: 14374.80 SQFT



DATE PREPARED 4/5/2022	
ROUTE 69	STATE MO
DISTRICT KC	SHEET NO. 12
COUNTY CLAY	
JOB NO. J4P3465	
CONTRACT ID.	
PROJECT NO.	
BRIDGE NO.	
DESCRIPTION	DATE
MISSOURI HIGHWAYS AND TRANSPORTATION COMMISSION	105 WEST CAPITOL JEFFERSON CITY, MO 65102 1-888-ASK-MODOT (1-888-275-6636)

RIGHT OF WAY SHEET
 SHEET 1 OF 8

AUSTIN'S WROUGHT
IRON INC.

SW 1/4 SW 1/4
SEC28 T51N R32W

SW 1/4 SW 1/4
SEC28 T51N R32W

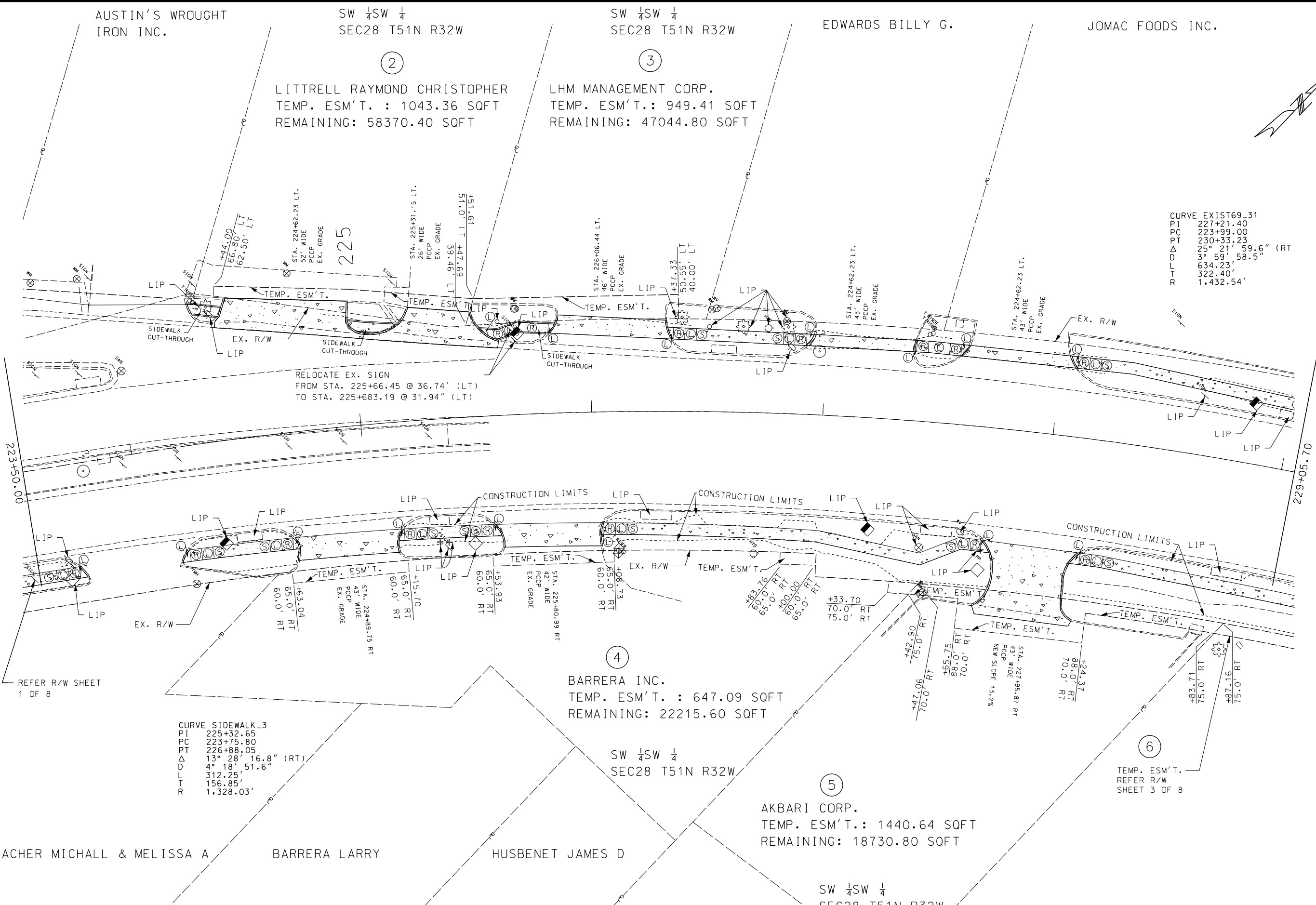
EDWARDS BILLY G.

JOMAC FOODS INC.

②
LITRELL RAYMOND CHRISTOPHER
TEMP. ESM'T. : 1043.36 SQFT
REMAINING: 58370.40 SQFT

③
LHM MANAGEMENT CORP.
TEMP. ESM'T. : 949.41 SQFT
REMAINING: 47044.80 SQFT

CURVE EXIST69_31
PI 227+21.40
PC 223+99.00
PT 230+33.23
Δ 25° 21' 59.6" (RT)
D 3° 59' 58.5"
L 634.23'
R 322.40'
1,432.54'



RELOCATE EX. SIGN
FROM STA. 225+66.45 @ 36.74' (LT)
TO STA. 225+683.19 @ 31.94" (LT)

CURVE SIDEWALK_3
PI 225+32.65
PC 223+75.80
PT 226+88.05
Δ 13° 28' 16.8" (RT)
D 4° 18' 51.6"
L 312.25'
R 156.85'
1,328.03'

④
BARRERA INC.
TEMP. ESM'T. : 647.09 SQFT
REMAINING: 22215.60 SQFT

⑤
AKBARI CORP.
TEMP. ESM'T. : 1440.64 SQFT
REMAINING: 18730.80 SQFT

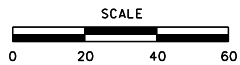
⑥
TEMP. ESM'T.
REFER R/W
SHEET 3 OF 8

ACHER MICHALL & MELISSA A


BARRERA LARRY

HUSBENET JAMES D

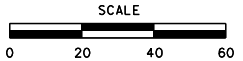
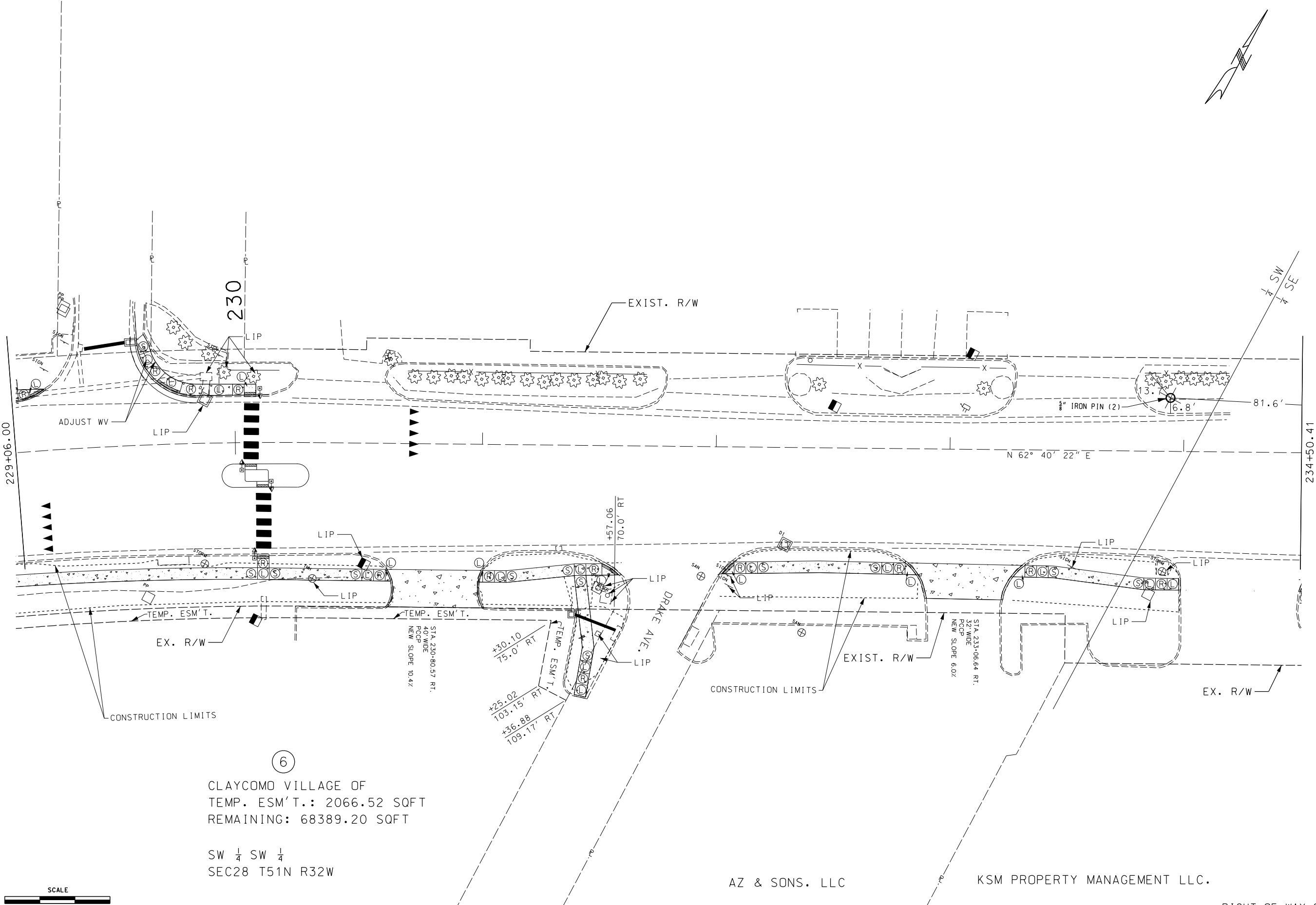
SW 1/4 SW 1/4
SEC28 T51N R32W



RIGHT OF WAY SHEET
SHEET 2 OF 8

DATE PREPARED 4/5/2022	
ROUTE 69	STATE MO
DISTRICT KC	SHEET NO. 13
COUNTY CLAY	
JOB NO. J4P3465	
CONTRACT ID.	
PROJECT NO.	
BRIDGE NO.	
DESCRIPTION	
DATE	
MISSOURI HIGHWAYS AND TRANSPORTATION COMMISSION	
 105 WEST CAPITOL JEFFERSON CITY, MO 65102 1-888-ASK-MODOT (1-888-275-6636)	

IF A SEAL IS PRESENT ON THIS SHEET IT HAS BEEN ELECTRONICALLY SEALED AND DATED.




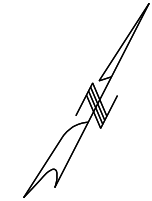
6
 CLAYCOMO VILLAGE OF
 TEMP. ESM'T.: 2066.52 SQFT
 REMAINING: 68389.20 SQFT

 SW 1/4 SW 1/4
 SEC28 T51N R32W

AZ & SONS. LLC KSM PROPERTY MANAGEMENT LLC.

RIGHT OF WAY SHEET
SHEET 3 OF 8

DATE PREPARED 4/5/2022	
ROUTE 69	STATE MO
DISTRICT KC	SHEET NO. 14
COUNTY CLAY	
JOB NO. J4P3465	
CONTRACT ID.	
PROJECT NO.	
BRIDGE NO.	
DATE	DESCRIPTION
MISSOURI HIGHWAYS AND TRANSPORTATION COMMISSION	
 105 WEST CAPITOL JEFFERSON CITY, MO 65102 1-888-ASK-MODOT (1-888-275-6636)	
IF A SEAL IS PRESENT ON THIS SHEET IT HAS BEEN ELECTRONICALLY SEALED AND DATED.	



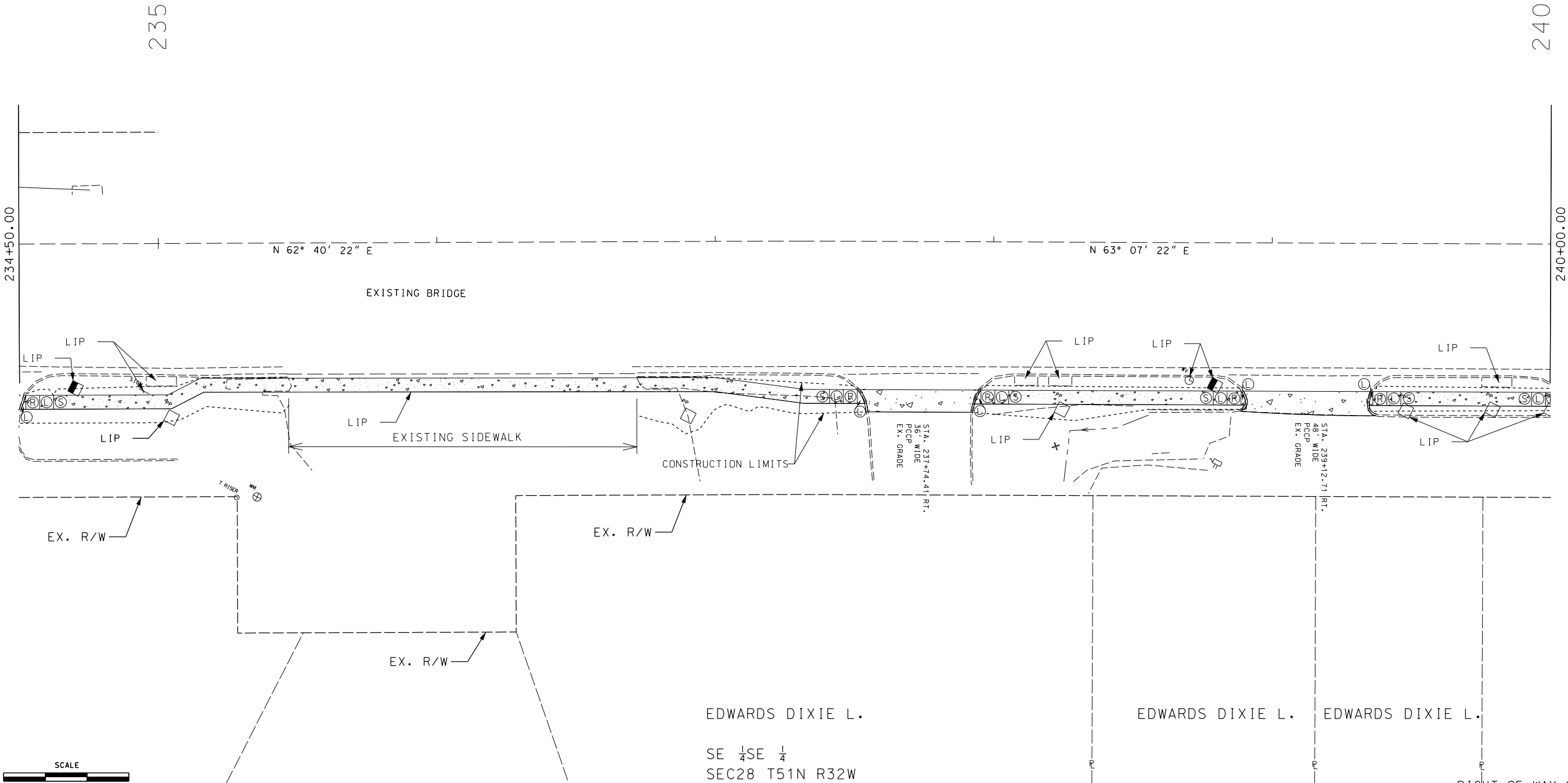
DATE PREPARED 4/5/2022	
ROUTE 69	STATE MO
DISTRICT KC	SHEET NO. 15
COUNTY CLAY	
JOB NO. J4P3465	
CONTRACT ID.	
PROJECT NO.	
BRIDGE NO.	

DATE	DESCRIPTION

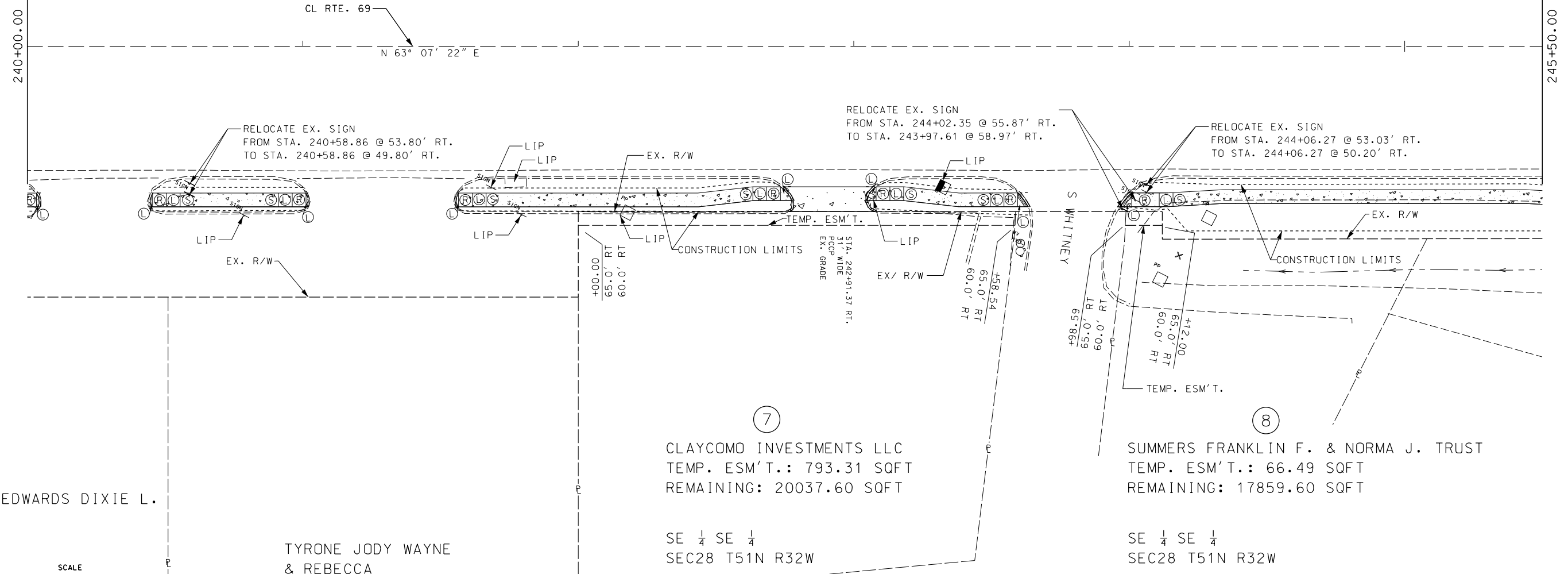
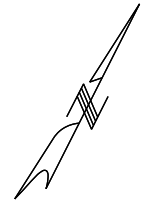
MISSOURI HIGHWAYS AND TRANSPORTATION COMMISSION

105 WEST CAPITOL
JEFFERSON CITY, MO 65102
1-888-ASK-MODOT (1-888-275-6636)

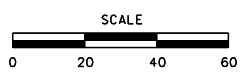
RIGHT OF WAY SHEET
SHEET 4 OF 8



IF A SEAL IS PRESENT ON THIS SHEET IT HAS BEEN ELECTRONICALLY SEALED AND DATED.



EDWARDS DIXIE L.



TYRONE JODY WAYNE
& REBECCA

⑦
CLAYCOM INVESTMENTS LLC
TEMP. ESM'T.: 793.31 SQFT
REMAINING: 20037.60 SQFT

SE ¼ SE ¼
SEC28 T51N R32W

⑧
SUMMERS FRANKLIN F. & NORMA J. TRUST
TEMP. ESM'T.: 66.49 SQFT
REMAINING: 17859.60 SQFT

SE ¼ SE ¼
SEC28 T51N R32W

RIGHT OF WAY SHEET
SHEET 5 OF 8

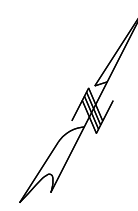
DATE PREPARED 4/5/2022	
ROUTE 69	STATE MO
DISTRICT KC	SHEET NO. 16
COUNTY CLAY	
JOB NO. J4P3465	
CONTRACT ID.	
PROJECT NO.	
BRIDGE NO.	
DESCRIPTION	DATE

MISSOURI HIGHWAYS AND TRANSPORTATION
COMMISSION

105 WEST CAPITOL
JEFFERSON CITY, MO 65102
1-888-ASK-MODOT (1-888-275-6636)

IF A SEAL IS PRESENT ON THIS SHEET IT HAS BEEN ELECTRONICALLY SEALED AND DATED.

005_ROW_05_J43465_i20.dgn 10:41:01 AM 4/5/2022

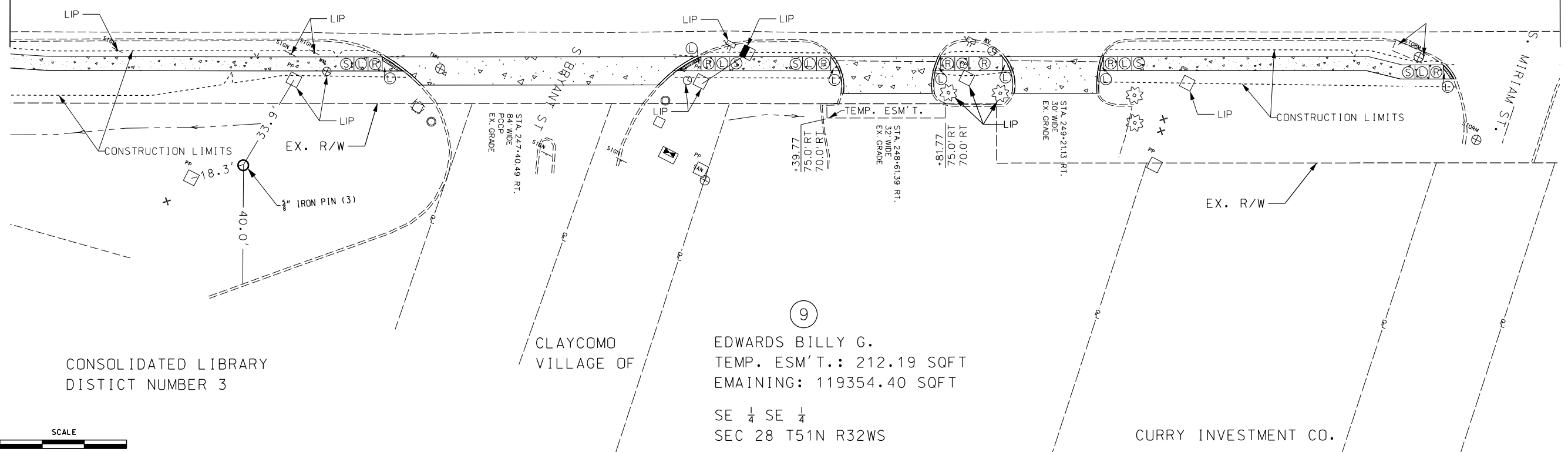


245+50.00

251+00.00

N 62° 57' 22" E

250



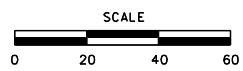
CONSOLIDATED LIBRARY
DISTRICT NUMBER 3

CLAYCOMO
VILLAGE OF

9
 EDWARDS BILLY G.
 TEMP. ESM'T.: 212.19 SQFT
 EMANING: 119354.40 SQFT
 SE ¼ SE ¼
 SEC 28 T51N R32WS

CURRY INVESTMENT CO.

RIGHT OF WAY SHEET
SHEET 6 OF 8

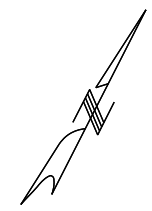


DATE PREPARED 4/5/2022	
ROUTE 69	STATE MO
DISTRICT KC	SHEET NO. 17
COUNTY CLAY	
JOB NO. J4P3465	
CONTRACT ID.	
PROJECT NO.	
BRIDGE NO.	
DESCRIPTION	DATE

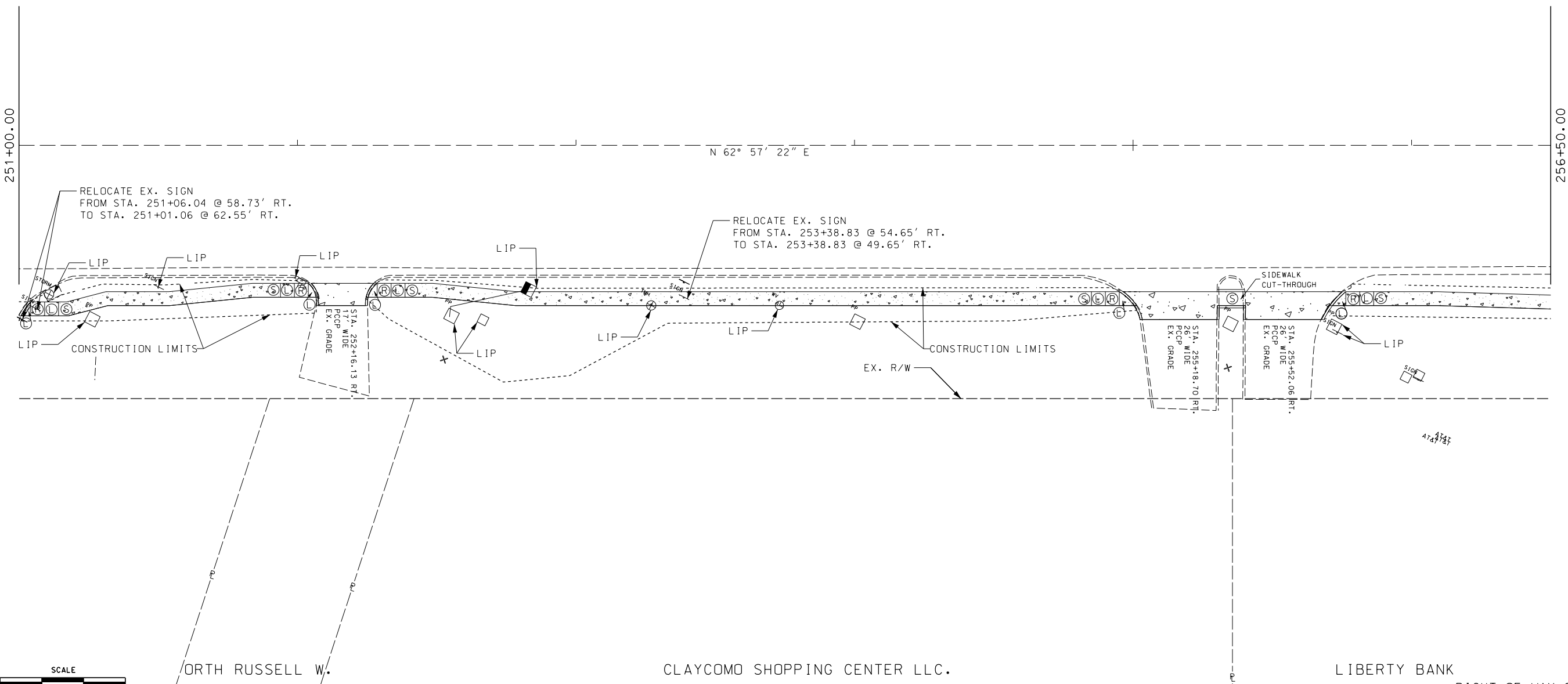
MISSOURI HIGHWAYS AND TRANSPORTATION
COMMISSION

105 WEST CAPITOL
JEFFERSON CITY, MO 65102
1-888-ASK-MODOT (1-888-275-6636)

IF A SEAL IS PRESENT ON THIS SHEET IT HAS BEEN ELECTRONICALLY SEALED AND DATED.



255



251+00.00

256+50.00

N 62° 57' 22" E

RELOCATE EX. SIGN
FROM STA. 251+06.04 @ 58.73' RT.
TO STA. 251+01.06 @ 62.55' RT.

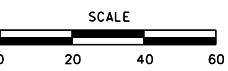
RELOCATE EX. SIGN
FROM STA. 253+38.83 @ 54.65' RT.
TO STA. 253+38.83 @ 49.65' RT.

STA. 252+16.13 RT.
17' WIDE
PCCP
EX. GRADE

STA. 255+18.70 RT.
26' WIDE
PCCP
EX. GRADE

STA. 255+52.06 RT.
26' WIDE
PCCP
EX. GRADE

SIDEWALK CUT-THROUGH



ORTH RUSSELL W.

CLAYCOMO SHOPPING CENTER LLC.

LIBERTY BANK

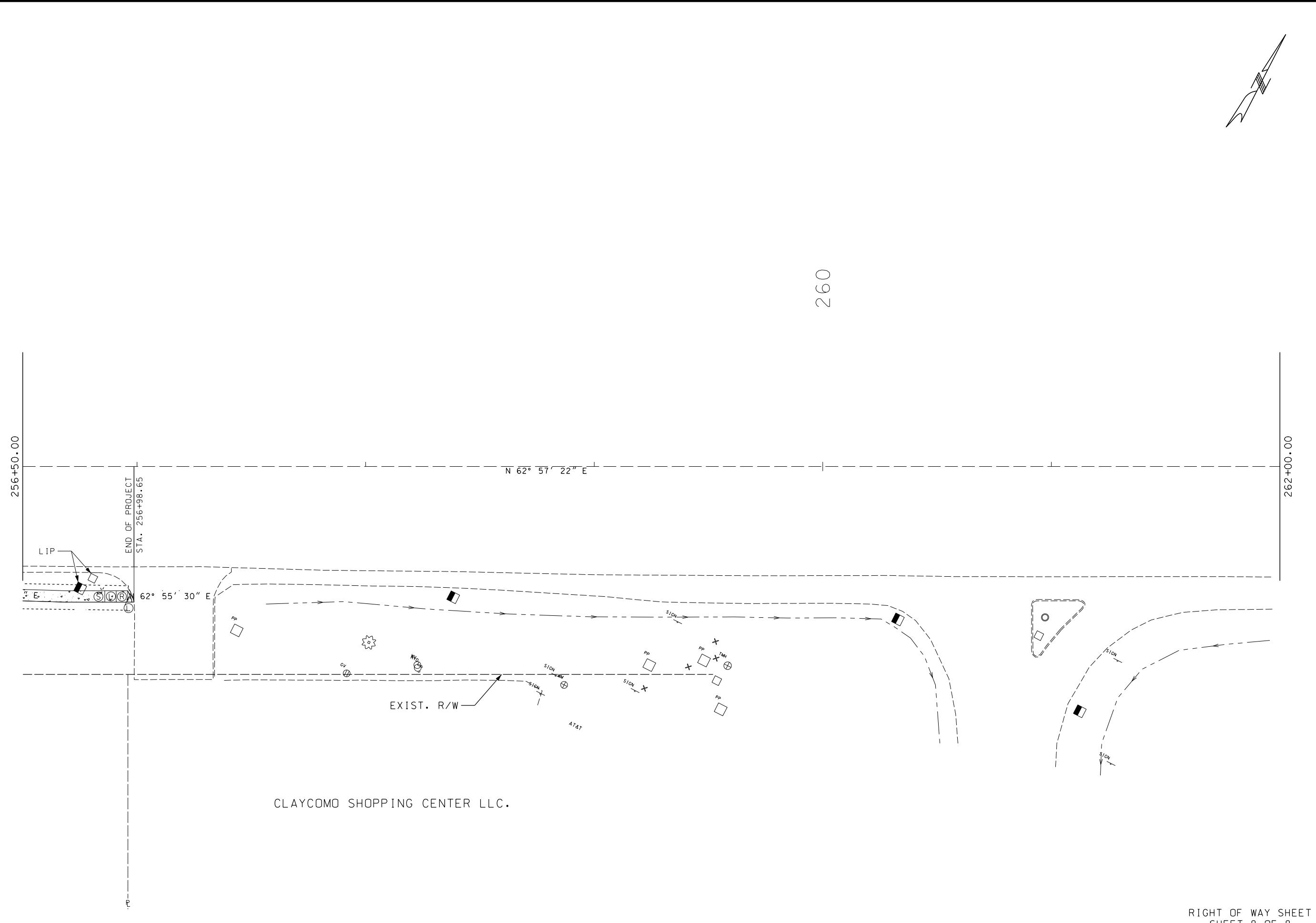
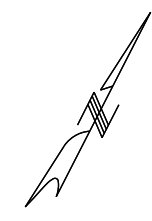
RIGHT OF WAY SHEET
SHEET 7 OF 8

DATE PREPARED 4/5/2022	
ROUTE 69	STATE MO
DISTRICT KC	SHEET NO. 18
COUNTY CLAY	
JOB NO. J4P3465	
CONTRACT ID.	
PROJECT NO.	
BRIDGE NO.	
DESCRIPTION	DATE

MISSOURI HIGHWAYS AND TRANSPORTATION COMMISSION


105 WEST CAPITOL
JEFFERSON CITY, MO 65102
1-888-ASK-MODOT (1-888-275-6636)

IF A SEAL IS PRESENT ON THIS SHEET IT HAS BEEN ELECTRONICALLY SEALED AND DATED.



DATE PREPARED 4/5/2022	
ROUTE 69	STATE MO
DISTRICT KC	SHEET NO. 19
COUNTY CLAY	
JOB NO. J4P3465	
CONTRACT ID.	
PROJECT NO.	
BRIDGE NO.	
DESCRIPTION	DATE

MISSOURI HIGHWAYS AND TRANSPORTATION COMMISSION



105 WEST CAPITOL
JEFFERSON CITY, MO 65102
1-888-ASK-MODOT (1-888-275-6636)

CLAYCOMD SHOPPING CENTER LLC.

RIGHT OF WAY SHEET
SHEET 8 OF 8

IF A SEAL IS PRESENT ON THIS SHEET IT HAS BEEN ELECTRONICALLY SEALED AND DATED.