

LEGEND

- DETOUR ROUTE
- NW 72ND ST. CLOSURE

**WESTBOUND 72ND ST. DETOUR PLAN
SHEET 1 OF 1**

"THIS MEDIA SHOULD NOT BE CONSIDERED A CERTIFIED DOCUMENT."

DATE PREPARED

05/27/2022

ROUTE STATE

I-29 MO

DISTRICT SHEET NO.

KC 1

COUNTY

PLATTE

JOB NO.

J413450

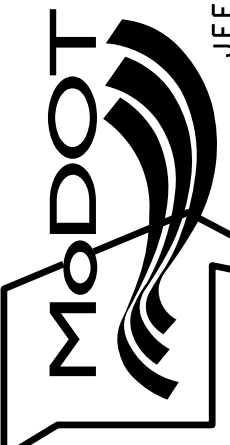
CONTRACT ID.

PROJECT NO.

BRIDGE NO.

DATE	DESCRIPTION

MISSOURI HIGHWAYS AND TRANSPORTATION COMMISSION

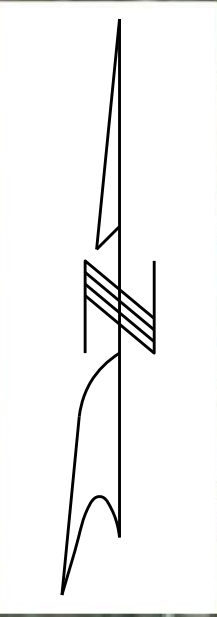
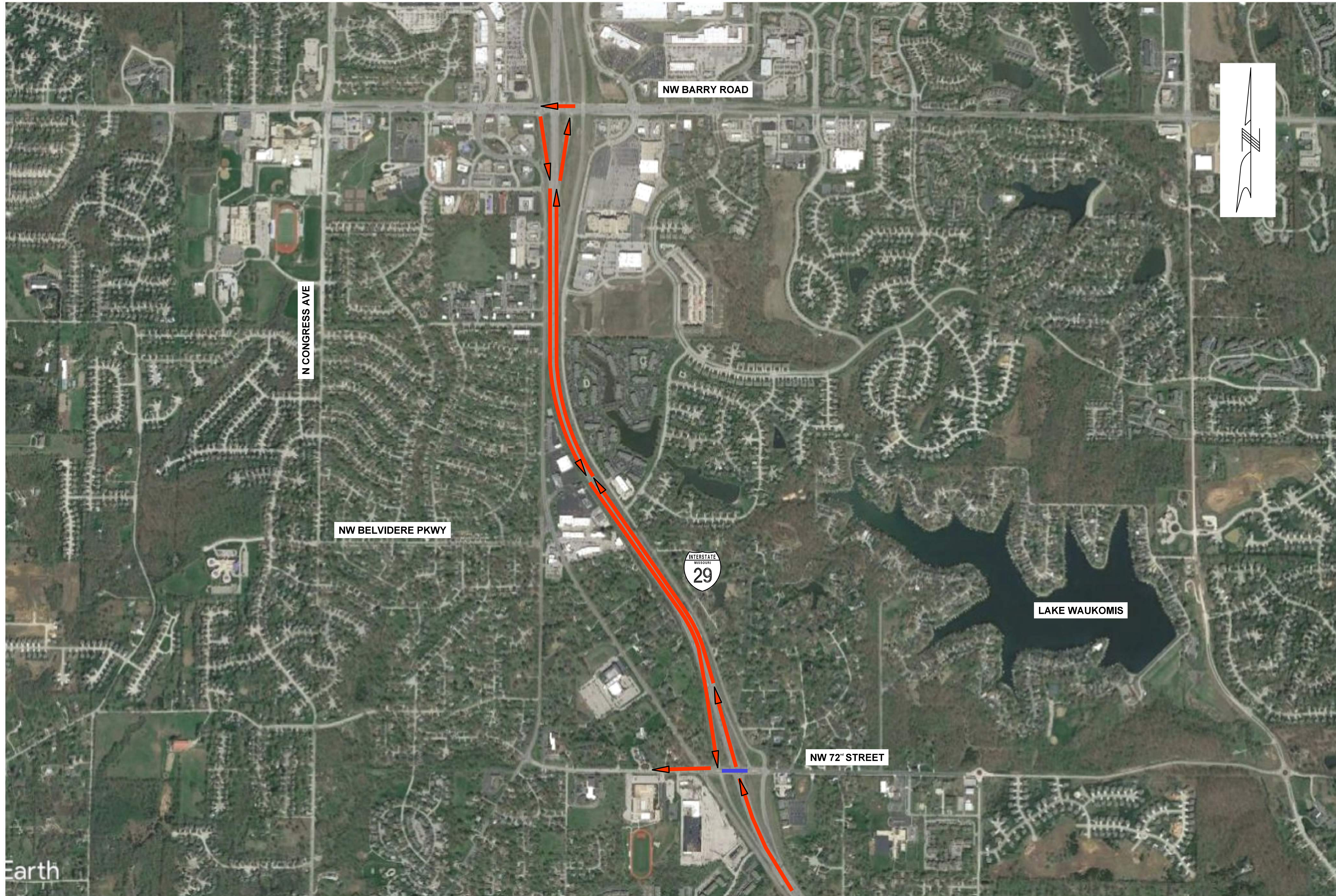


105 WEST CAPITOL
JEFFERSON CITY, MO 65102
1-888-ASK-MODOT (1-888-275-6636)

800 E 101st Terr., Ste. 200
Kansas City, MO 64131
Phone (816) 701-3100
Fax (816) 942-3013
Missouri Cert. of
Authority #2003007599

WILSON & COMPANY
ENGINEERS & ARCHITECTS

IF A SEAL IS PRESENT ON THIS SHEET IT HAS BEEN ELECTRONICALLY SEALED AND DATED.



LEGEND

- DETOUR ROUTE
- NW 72ND ST. CLOSURE

**NORTHBOUND I-29 TO WESTBOUND 72ND ST. DETOUR PLAN
SHEET 1 OF 1**

"THIS MEDIA SHOULD NOT BE CONSIDERED A CERTIFIED DOCUMENT."

DATE PREPARED
05/27/2022

ROUTE I-29	STATE MO
DISTRICT KC	SHEET NO. 1

COUNTY
PLATTE

JOB NO.
J413450

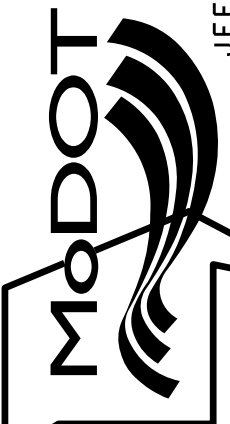
CONTRACT ID.

PROJECT NO.

BRIDGE NO.

DATE	DESCRIPTION

MISSOURI HIGHWAYS AND TRANSPORTATION COMMISSION



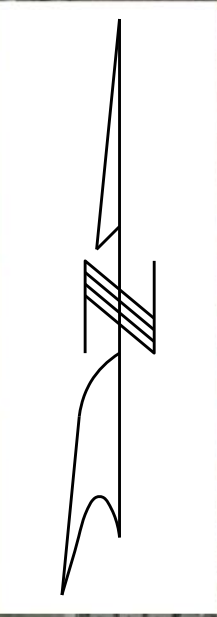
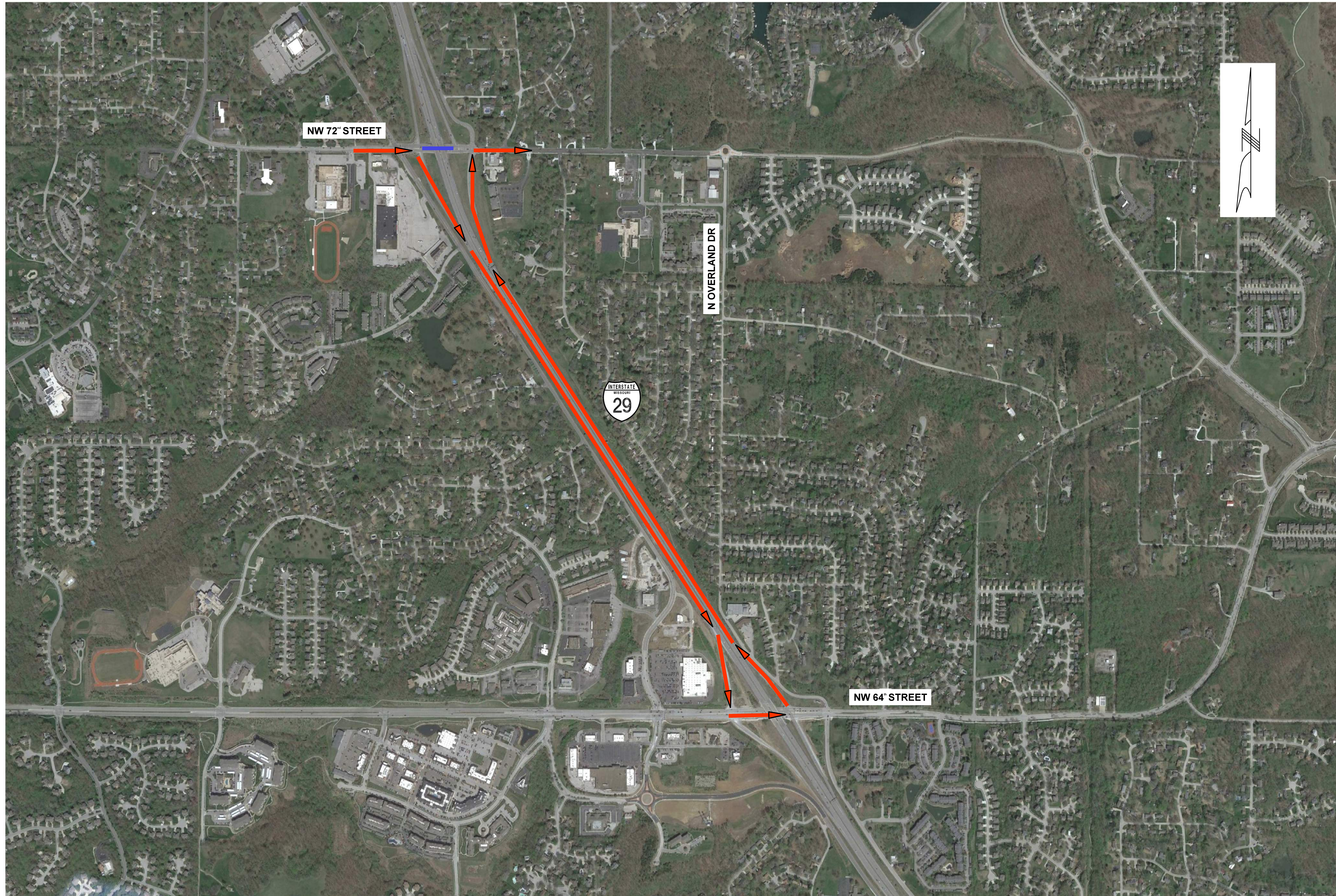
105 WEST CAPITOL
JEFFERSON CITY, MO 65102
1-888-ASK-MODOT (1-888-273-6636)

800 E 101st Terr., Ste. 200
Kansas City, MO 64131
Phone (816) 701-3100
Fax (816) 942-3013
Missouri Cert. of
Authority #2003007599



WILSON & COMPANY
ENGINEERS & ARCHITECTS

IF A SEAL IS PRESENT ON THIS SHEET IT HAS BEEN ELECTRONICALLY SEALED AND DATED.



LEGEND

- DETOUR ROUTE
- NW 72ND ST. CLOSURE

EASTBOUND 72ND ST. DETOUR PLAN
SHEET 1 OF 1

800 E 101st Terr., Ste. 200
Kansas City, MO 64131
Phone (816) 701-3100
Fax (816) 942-3013
Missouri Cert. of
Authority #2003007599

WILSON & COMPANY
ENGINEERS & ARCHITECTS

MISSOURI HIGHWAYS AND TRANSPORTATION
COMMISSION
MoDOT
105 WEST CAPITOL
JEFFERSON CITY, MO 65102
1-888-ASK-MODOT (1-888-273-6636)

DATE DESCRIPTION

DATE	DESCRIPTION

PROJECT NO.

BRIDGE NO.

CONTRACT ID.

J413450

PLATTE

COUNTY

DISTRICT SHEET NO.

KC 1

ROUTE STATE

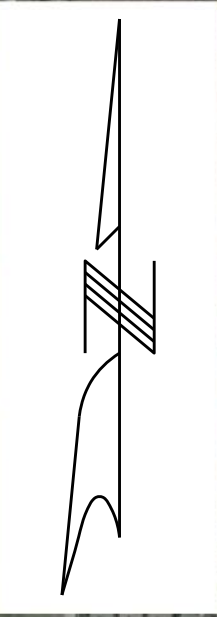
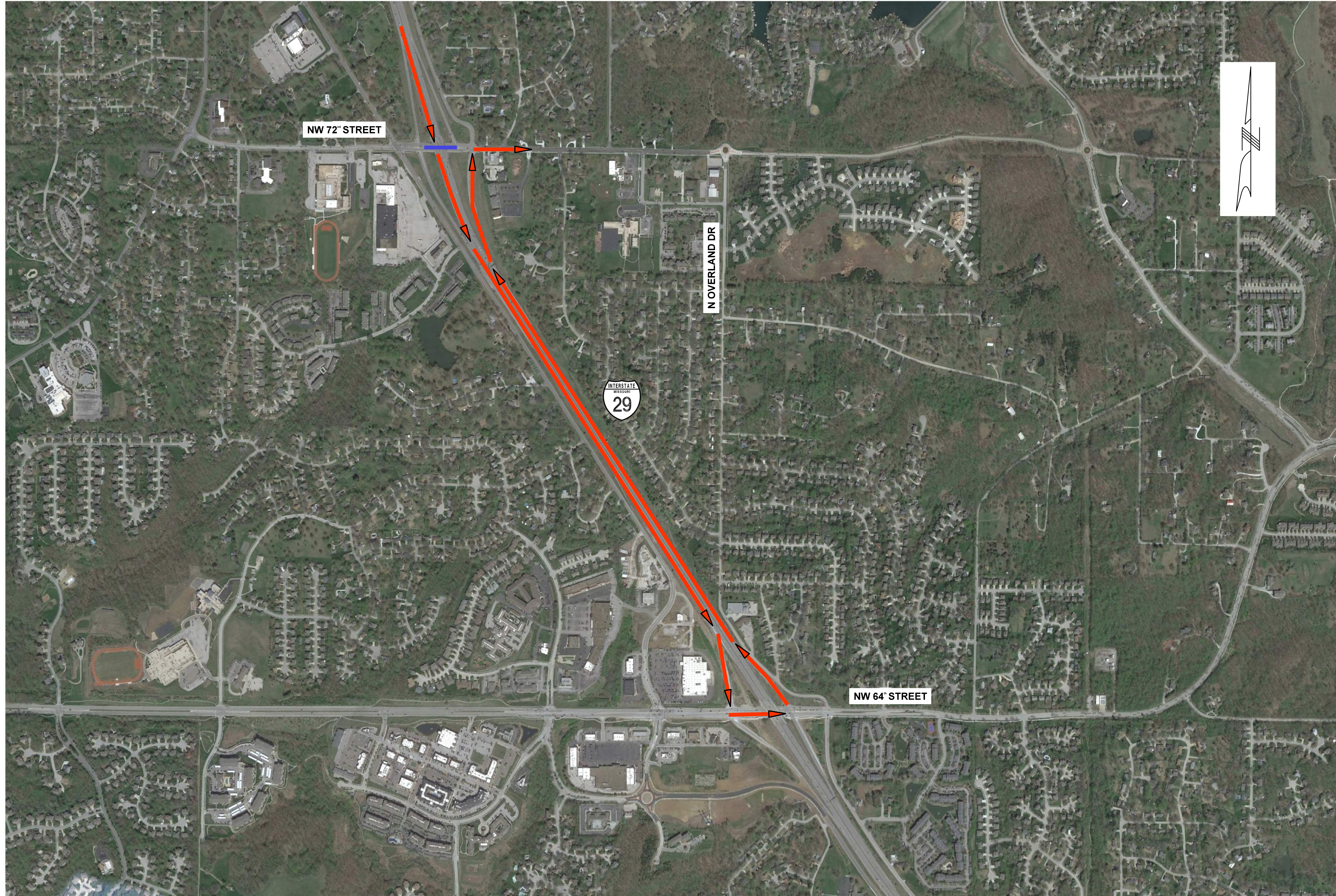
I-29 MO

DATE PREPARED

05/27/2022

"THIS MEDIA SHOULD NOT BE CONSIDERED A CERTIFIED DOCUMENT."

IF A SEAL IS PRESENT ON THIS SHEET IT HAS BEEN ELECTRONICALLY SEALED AND DATED.



LEGEND

- DETOUR ROUTE
- NW 72ND ST. CLOSURE

**SOUTHBOUND I-29 TO EASTBOUND 72ND ST. DETOUR PLAN
SHEET 1 OF 1**

"THIS MEDIA SHOULD NOT BE CONSIDERED A CERTIFIED DOCUMENT."

DATE PREPARED 05/27/2022	
ROUTE I-29	STATE MO
DISTRICT KC	SHEET NO. 1
COUNTY PLATTE	
JOB NO. J413450	
CONTRACT ID.	
PROJECT NO.	
BRIDGE NO.	

DATE	DESCRIPTION

MISSOURI HIGHWAYS AND TRANSPORTATION COMMISSION

105 WEST CAPITOL
JEFFERSON CITY, MO 65102
1-888-ASK-MODOT (1-888-273-6636)

800 E 101st Terr., Ste. 200
Kansas City, MO 64131
Phone (816) 701-3100
Fax (816) 942-3013
Missouri Cert. of
Authority #2003007599

WILSON & COMPANY
ENGINEERS & ARCHITECTS

IF A SEAL IS PRESENT ON THIS SHEET IT HAS BEEN ELECTRONICALLY SEALED AND DATED.