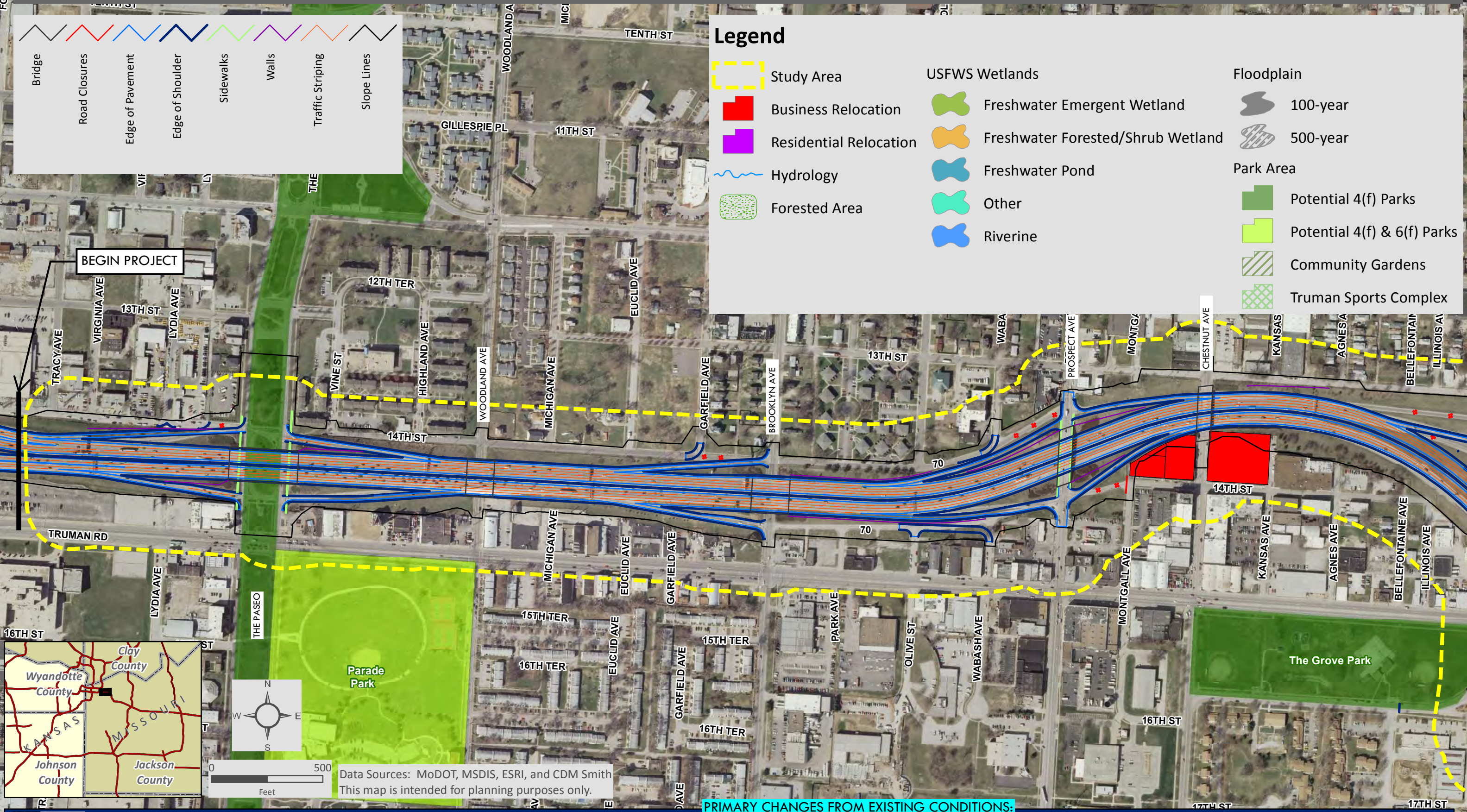


# J411 486D I-70 Corridor Study - Project Limits



- Bridge
- Road Closures
- Edge of Pavement
- Edge of Shoulder
- Sidewalks
- Walls
- Traffic Striping
- Slope Lines

## Legend

- Study Area
- Business Relocation
- Residential Relocation
- Hydrology
- Forested Area
- USFWS Wetlands
  - Freshwater Emergent Wetland
  - Freshwater Forested/Shrub Wetland
  - Freshwater Pond
  - Other
  - Riverine
- Floodplain
  - 100-year
  - 500-year
- Park Area
  - Potential 4(f) Parks
  - Potential 4(f) & 6(f) Parks
  - Community Gardens
  - Truman Sports Complex



Data Sources: MoDOT, MSDIS, ESRI, and CDM Smith  
 This map is intended for planning purposes only.

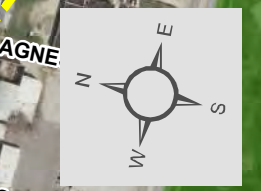
**PRIMARY CHANGES FROM EXISTING CONDITIONS:**

- 14th St separated from WB and EB ramp access
- 14th St and Garfield Ave reconnected
- 14th St and Wabash Ave reconnected

# J411 486D I-70 Corridor Study - Project Limits



## Legend



Data Sources: MoDOT, MSDIS, ESRI, and CDM Smith  
 This map is intended for planning purposes only.

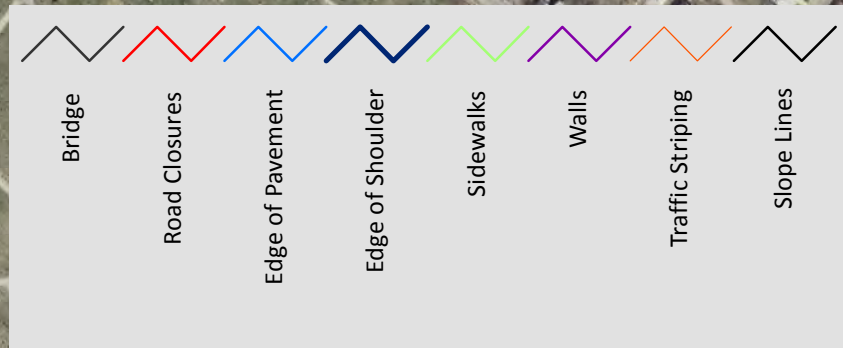
**PRIMARY CHANGES FROM EXISTING CONDITIONS:**

- Modified WB entrance ramp at Benton Blvd
- Modified alignment for I-70 between Chestnut Ave and 23rd St
- Modified WB entrance and exit ramps at 23rd St
- Askew Ave and 24th St reconnected.



**I-70 Second Tier EIS**

# J411 486D I-70 Corridor Study - Project Limits



## Legend



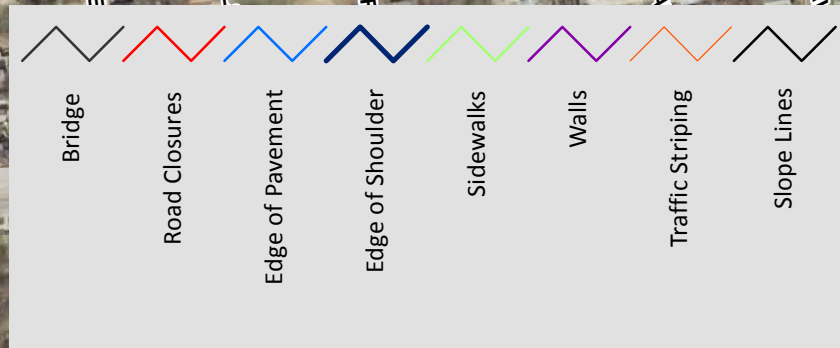
Data Sources: MoDOT, MSDIS, ESRI, and CDM Smith  
 This map is intended for planning purposes only.

**PRIMARY CHANGES FROM EXISTING CONDITIONS:**

- Modified alignment for I-70 St through Jackson curve
- Modified EB entrance and exit ramps at 27th St
- Removed EB exit ramp to Myrtle Ave
- Modified EB exit and entrance ramps at Jackson Ave
- Reconnected Spruce Ave and Myrtle Ave
- Added connection to Myrtle Ave and Norton Ave

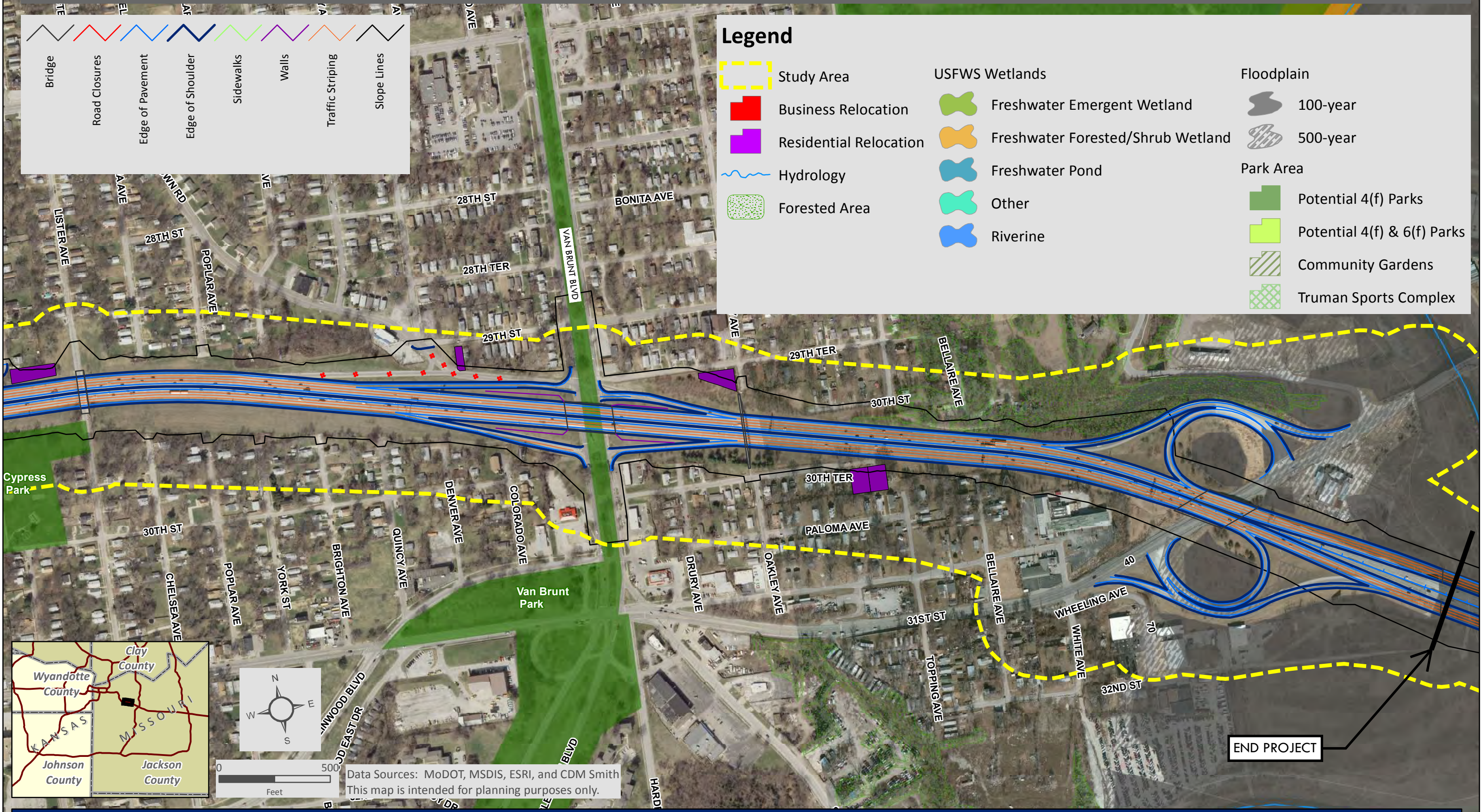


# J411 486D I-70 Corridor Study - Project Limits



## Legend

Study Area	USFWS Wetlands	Floodplain
Business Relocation	Freshwater Emergent Wetland	100-year
Residential Relocation	Freshwater Forested/Shrub Wetland	500-year
Hydrology	Freshwater Pond	Park Area
Forested Area	Other	Potential 4(f) Parks
	Riverine	Potential 4(f) & 6(f) Parks
		Community Gardens
		Truman Sports Complex



Data Sources: MoDOT, MSDIS, ESRI, and CDM Smith  
 This map is intended for planning purposes only.

END PROJECT



**PRIMARY CHANGES FROM EXISTING CONDITIONS:**  
 - Modified WB entrance ramp at Van Brunt Blvd

**I-70 Second Tier EIS**