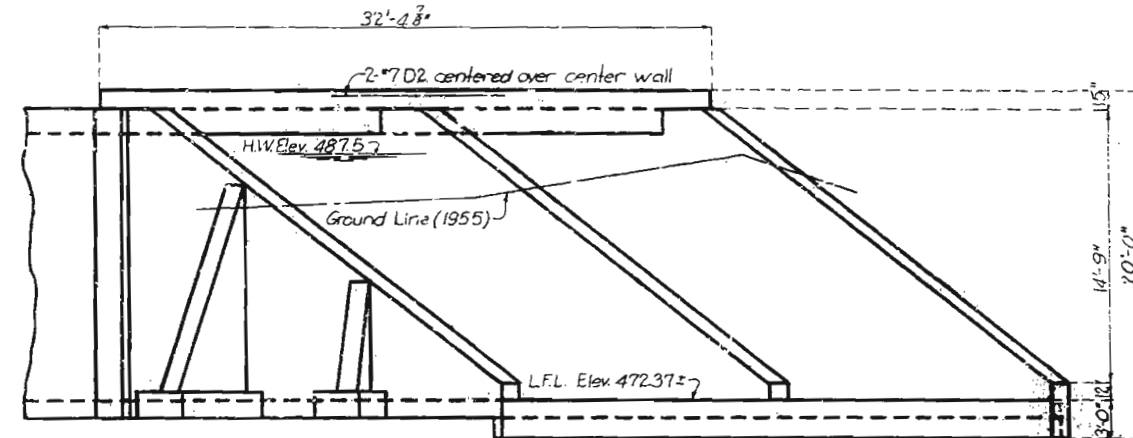


MISSOURI STATE HIGHWAY DEPARTMENT

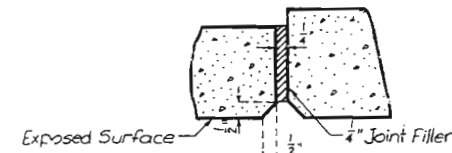
FED. ROAD DIST. NO.	STATE	FED. AID PROJ. NO.	FISCAL YEAR	SHEET NO.	TOTAL SHEETS
5	MO.		19	72	

& Construction Sta. = 527+91.08
 & Lt. Lane - Gr. Elev. = 514.13
 Fill = 24.06'
 & Rt. Lane - Gr. Elev. = 513.80
 Fill = 24.06'
 Rt. Edge Ramp GA - Prof. Gr. Elev. = 492.67
 Fill = 4.28'



END ELEVATION

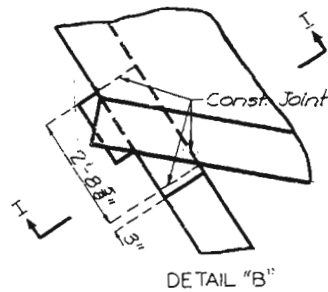
Note: Channel to be opened to a free outlet at downstream end.



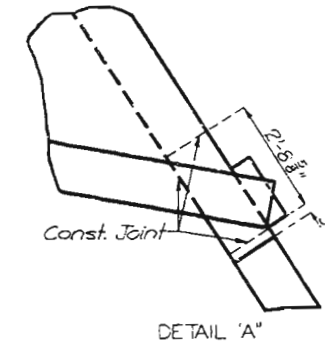
DETAIL OF TRANSVERSE JOINT

GENERAL NOTES:

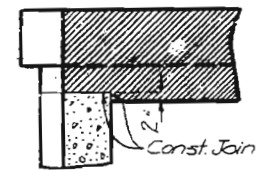
Design Specifications: A.A.S.H.O. - 1957
 Loading: H20-S16-44
 Reinforcing Steel Stress: 20,000 \pm 1%
 Concrete, Class B Stress: 1,200 \pm 1%
 All concrete shall be Class B (Air-Entrained)
 Bar supports and spacers required in the top slab.
 Where joint filler is specified on the plans, it shall conform with the requirements of Section 157.2.5 of the Standard Specifications.



DETAIL "B"



DETAIL "A"



SECTION I-I
(Showing Details of Construction Joint)

B.M. #22A Elev. 492.78 on NE corner of H.W. Double 18x5 Box Culvert 32' Lt. of Outer Road Lt. (Dunn Road)

B.M. #23 (Rt. 367R) Elev. 433.92 Chiseled up in top Δ Sec. Wing Wall of Culv. 124' East of New Holls Ferry Rd. 34' North of Rt. 66 Sta. 528+27.0 (U.S.G.S. Datum)

BRIDGE OVER BRANCH OF MALINE CREEK

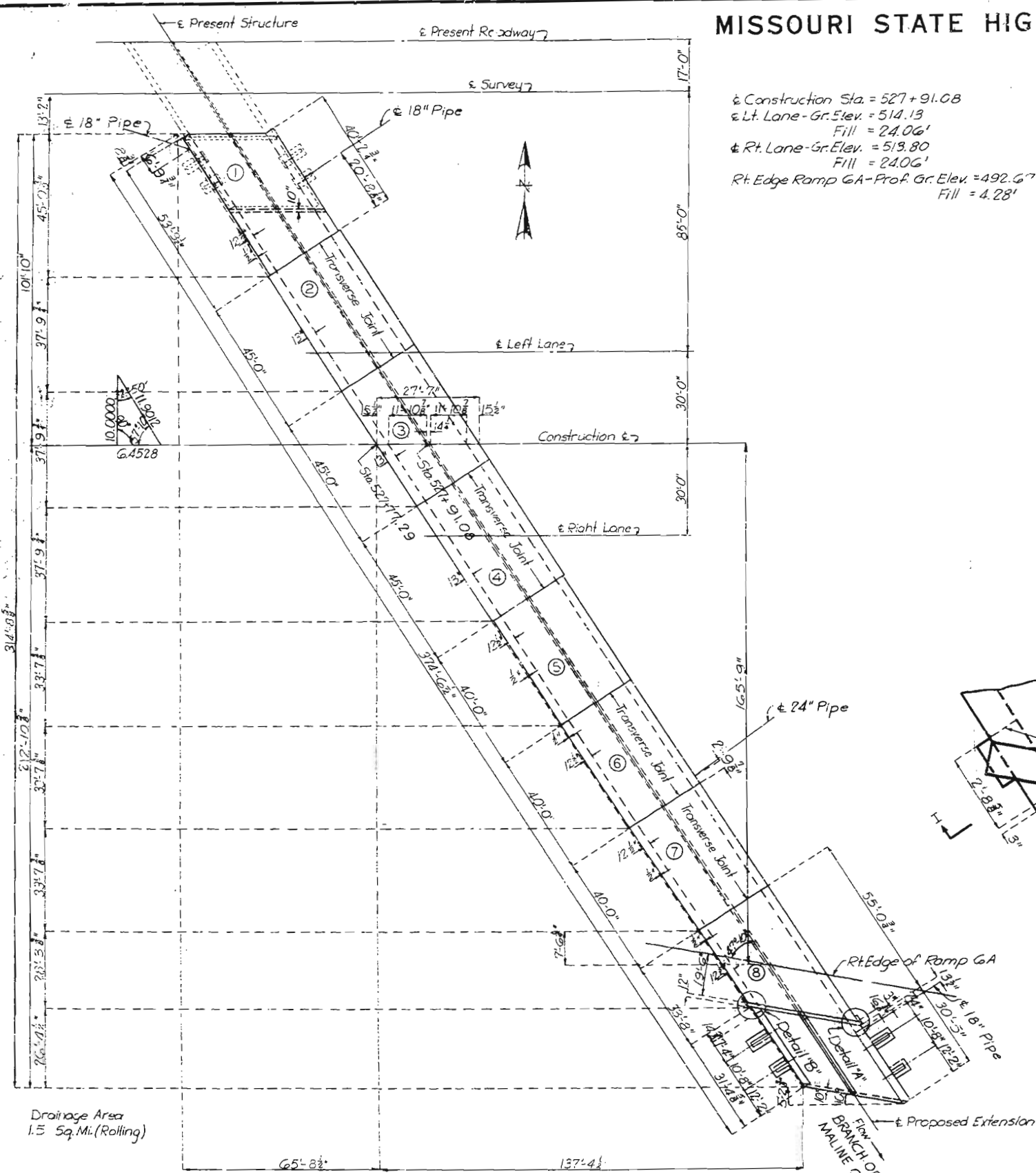
STATE ROAD: INTERSTATE ROUTE 270
 ABOUT 3.5 MILES N.E. OF FERGUSON
 PROJECT NO.: 270-538(RTE 1270)/STA. 527+77.29

ST. LOUIS COUNTY

ESTIMATED QUANTITIES		Final Quantities
Class 3 Excavation for Structures	Cu.Yds	3100 / 2221
Class B Concrete	Cu.Yds	1326.4 / 1326.4
Reinforcing Steel	Lbs	178,900 / 178,900
Granular Backfill	Tons	544 / 544

SUBMITTED BY: *Leo J. Beckert* DATE: 1-31-61
 APPROVED BY: *A.J. Corbett* DATE: 1-31-61

STD 54-00



PLAN

Note: Light dotted lines indicate old work. Heavy lines indicate new work.

Note: This drawing is not to scale. Follow dimensions.

Drawn Jan. 1958 by L.S.S.
 Checked Aug. 1958 by B.J.P.

Sheet No. 1 of 8

FINAL PLANS

124

MISSOURI STATE HIGHWAY DEPARTMENT

FED. ROAD DIST. NO.	STATE	FED. AID PROJ. NO.	FISCAL YEAR	SHEET NO.	TOTAL SHEETS
5	MO.		19	73	

COMPLETE BILL OF REINFORCING STEEL

No.	Size	Length	Mark	Bending Sketches & Cutting Diagrams	No.	Size	Length	Mark																								
Section No. 1																																
47	#8	22'-9"	A1		114	#6	22'-9"	A6																								
7	#8	23'-3"	A2		164	#6	16'-3"	B8																								
7	#8	25'-3"	A3		184	#4	20'-3"	F22																								
36	#6	4'-3"	B1		32	#7	8'-6"	H4																								
28	#6	8'-6"	B2	31	#7	5'-6"	H5																									
97	#6	15'-9"	B3	64	#7	8'-0"	H6																									
74	#6	17'-0"	B4	102	#5	7'-0"	J9																									
Section No. 2																																
8	#4	36'-3"	F1	<table border="1" style="width: 100%; border-collapse: collapse;"> <tr> <th>Mark</th> <th>"a"</th> <th>"b"</th> <th>"c"</th> <th>"d"</th> <th>"e"</th> </tr> <tr> <td>F30</td> <td>3'-5"</td> <td>2'-0"</td> <td>30'-0"</td> <td>33'-6"</td> <td>14 Cut 8</td> </tr> <tr> <td>F35</td> <td>2'-5"</td> <td>3'-0"</td> <td>30'-0"</td> <td>32'-6"</td> <td>10 Cut 10</td> </tr> <tr> <td>G2</td> <td>22'-3"</td> <td>5'-3"</td> <td>16'-1"</td> <td>18'-0"</td> <td>30 Cut 30</td> </tr> </table>	Mark	"a"	"b"	"c"	"d"	"e"	F30	3'-5"	2'-0"	30'-0"	33'-6"	14 Cut 8	F35	2'-5"	3'-0"	30'-0"	32'-6"	10 Cut 10	G2	22'-3"	5'-3"	16'-1"	18'-0"	30 Cut 30	48	#6	22'-9"	A6
Mark	"a"	"b"	"c"		"d"	"e"																										
F30	3'-5"	2'-0"	30'-0"		33'-6"	14 Cut 8																										
F35	2'-5"	3'-0"	30'-0"		32'-6"	10 Cut 10																										
G2	22'-3"	5'-3"	16'-1"	18'-0"	30 Cut 30																											
27	#4	30'-0"	F2	G1	2'-6"	2'-3"	15'-8"	18'-3"	12 Cut 38	104	#5	22'-9"	A7																			
10	#4	17'-0"	F3	K3	5'-6"	22'-3"	10'-11"	20'-6"	6 Cut 6	16	#5	24'-0"	A8																			
40	#4	23'-9"	F4	K4	2'-3"	12'-3"	6'-6"	8'-9"	5 Cut 10	14	#6	24'-0"	A9																			
1	#4	14'-9"	F5	*Bend as shown																												
1	#4	5'-9"	F6		188	#6	16'-3"	B9																								
1	#4	17'-9"	F7		6	#5	21'-3"	B10																								
1	#4	19'-9"	F8		2	#6	32'-0"	D1																								
1	#4	20'-9"	F9		2	#7	6'-9"	D2																								
3	#4	13'-0"	F10	9	#5	3'-9"	E1																									
6	#4	21'-6"	F11	Section No. 3																												
8	#4	28'-6"	F12	46	#4	31'-6"	F23																									
3	#4	7'-0"	F13	8	#4	28'-9"	F24																									
1	#4	12'-0"	F14	16	#4	30'-3"	F25																									
1	#4	14'-6"	F15	8	#4	26'-3"	F26																									
1	#4	17'-0"	F16	2	#4	20'-0"	F27																									
3	#4	19'-9"	F17	1	#4	16'-9"	F28																									
4	#4	20'-6"	F18	24	#4	28'-9"	F29																									
5	#4	18'-0"	F19	28	#5	33'-6"	F30																									
3	#4	27'-3"	F20	1	#4	13'-9"	F31																									
4	#4	27'-3"	F21	40	#4	23'-6"	F32																									
34	#9	8'-9"	H1	4	#4	20'-6"	F33																									
35	#9	5'-9"	H2	8	#4	18'-6"	F34																									
22	#9	8'-3"	H3	10	#4	32'-6"	F35																									
106	#6	7'-3"	J1	20	#4	18'-6"	F36																									
37	#8	8'-3"	J2	2	#4	22'-6"	F38																									
2	#6	9'-3"	U1	4	#4	24'-6"	F39																									
16	#6	5'-3"	U2	4	#4	26'-3"	F40																									
Section No. 4																																
270	#9	22'-9"	A2	1	#4	9'-3"	F42																									
654	#7	17'-6"	B5	38	#4	18'-3"	G1																									
552	#4	22'-9"	F21	30	#5	18'-0"	G2																									
132	#9	8'-9"	H1	33	#7	8'-6"	H4																									
132	#9	5'-9"	H2	37	#7	5'-6"	H5																									
270	#9	8'-3"	H3	161	#6	7'-3"	H7																									
324	#8	7'-9"	J3	3	#7	31'-0"	H10																									
540	#8	8'-6"	J5	108	#5	7'-0"	J9																									
Section No. 5																																
96	#8	22'-9"	A1	216	#6	7'-0"	J11																									
186	#7	17'-3"	B6	12	#6	37'-9"	J12																									
184	#4	20'-3"	F22	14	#4	14'-0"	K1																									
37	#9	8'-9"	H1	11	#4	25'-9"	K2																									
36	#9	5'-9"	H2	6	#4	20'-6"	K3																									
74	#9	8'-3"	H3	10	#4	8'-9"	K4																									
160	#6	7'-6"	J4	6	#6	16'-9"	L1																									
106	#9	9'-0"	J6	6	#6	11'-9"	L2																									
Section No. 6																																
188	#6	16'-9"	B7	54	#4	3'-9"	M1																									
184	#4	20'-3"	F22	4	#4	9'-3"	M2																									
44	#7	8'-6"	H4	12	#6	11'-6"	M3																									
43	#7	5'-6"	H5	12	#6	9'-3"	M4																									
87	#7	8'-0"	H6	4	#4	7'-3"	M5																									
88	#6	6'-9"	J7	32	#4	3'-3"	R1																									
138	#6	7'-0"	J8	16	#6	5'-3"	U2																									
16	#6	5'-3"	U2																													

4.22

BRIDGE OVER BRANCH OF MALINE CREEK
 STATE ROAD: INTERSTATE ROUTE 270
 ABOUT 3.5 MILES NE. OF FERGUSON
 PROJECT NO. I-270-5038(RTE) I-270 STA. 527+77.29
ST. LOUIS COUNTY

Drawn Mar. 1958 by L.G.S.
Checked Aug. 1958 by B.J.P.

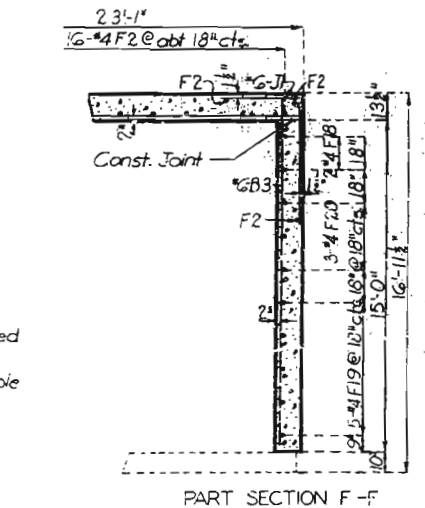
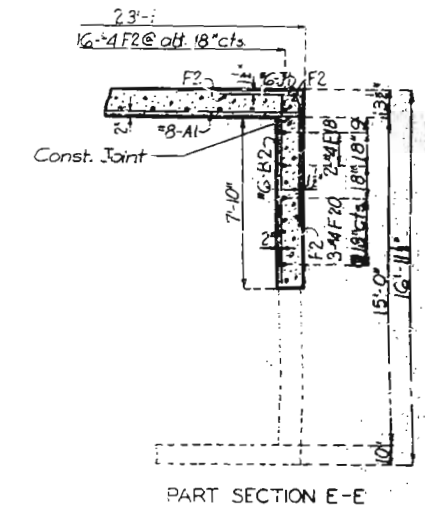
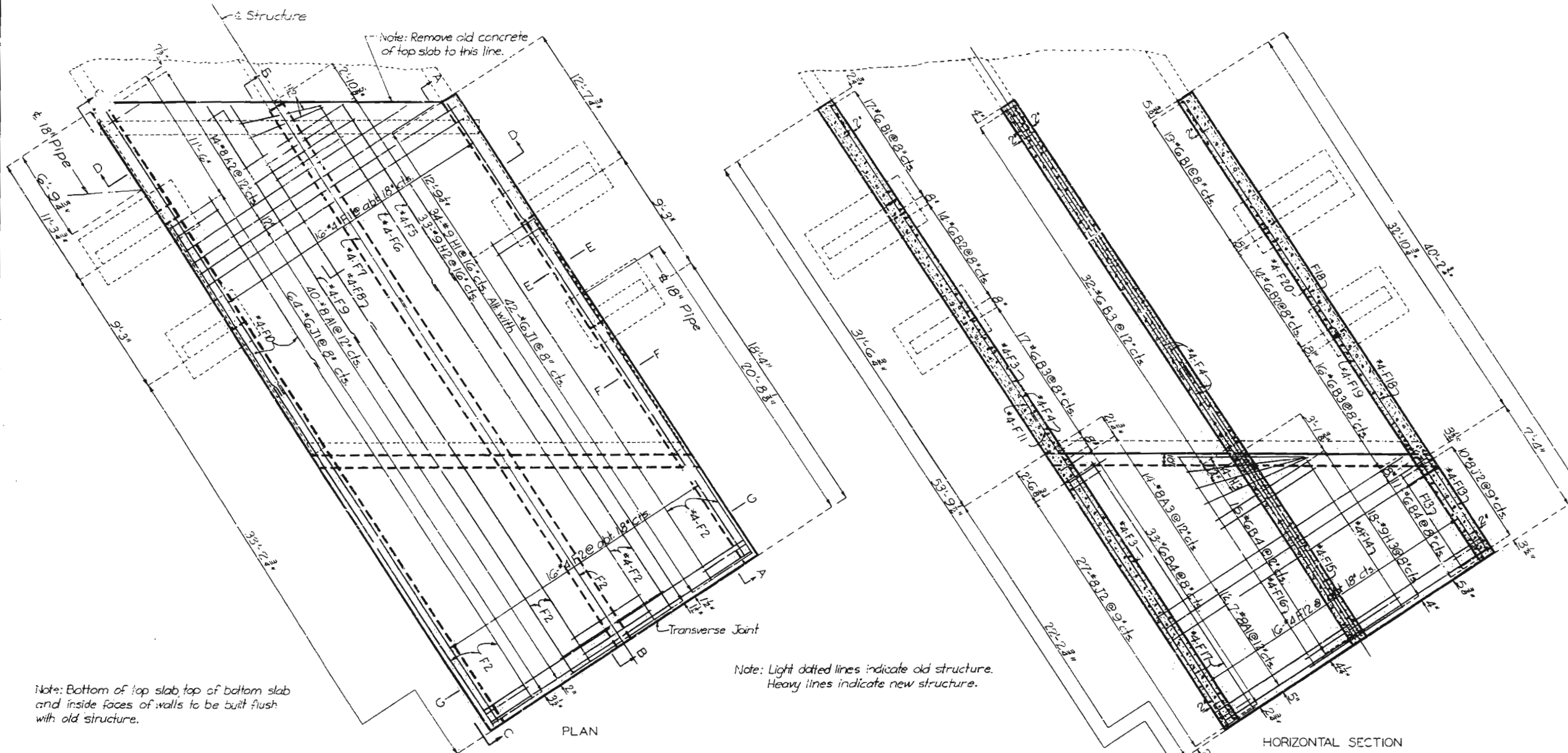
Note: This drawing is not to scale. Follow dimensions.

Sheet No. 2 of 8
NO CONSTRUCTION CHANGES



MISSOURI STATE HIGHWAY DEPARTMENT

FED. ROAD DIST. NO.	STATE	FED. AID PROJ. NO.	FISCAL YEAR	SHEET NO.	TOTAL SHEETS
5	MO.		19	74	

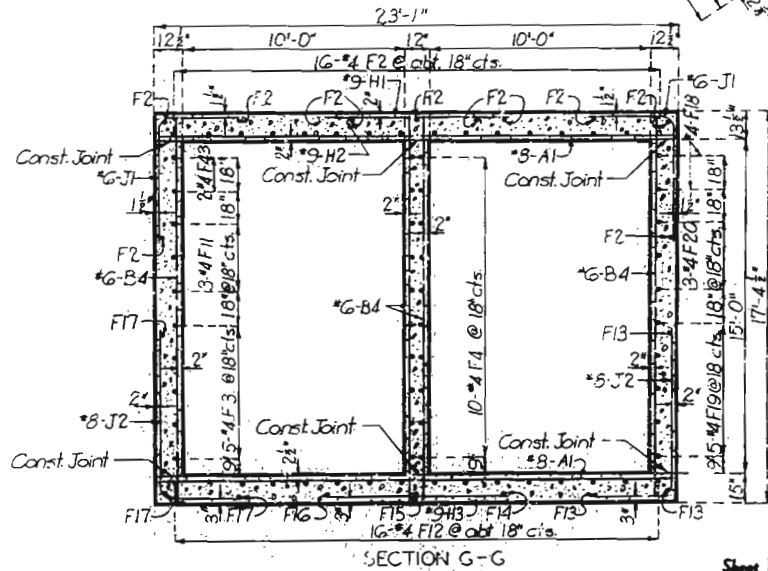
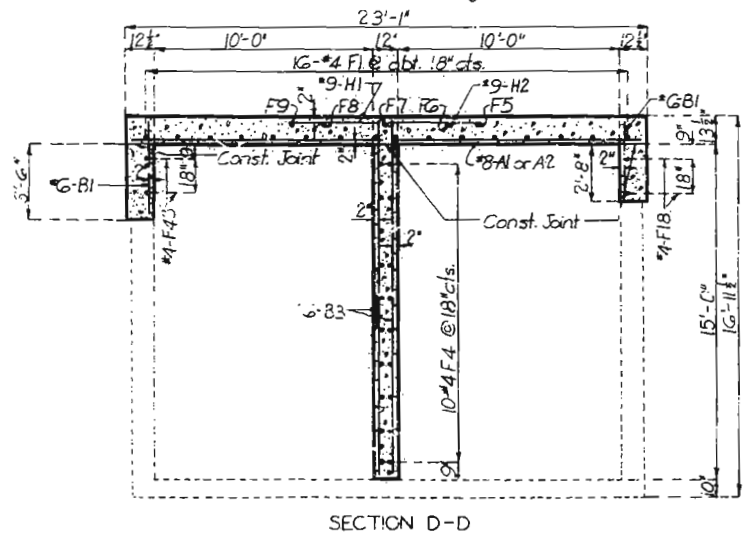


Note: Bottom of top slab, top of bottom slab and inside faces of walls to be built flush with old structure.

Note: Light dotted lines indicate old structure. Heavy lines indicate new structure.

Note: Bars bonded in old concrete not removed shall be cleanly stripped and bent into new concrete where possible. If length is available old bars shall extend into new concrete at least 32 diameters.

Note: See Sheet No. 5 of 8 for details of Sections A-A, B-B, & C-C.



DETAILS OF SECTION ①
(See Sheet 1 of 8)

BRIDGE OVER BRANCH OF MALINE CREEK
 STATE ROAD: INTERSTATE ROUTE 270
 ABOUT 3.5 MILES N.E. OF FERGUSON
 PROJECT NO. I-270-SC38XRT-1270 STA. 527+77.29
 ST. LOUIS COUNTY

423

Drawn Jan. 1958 by L.G.S.
 Checked Aug. 1958 by B.J.P.

Note: This drawing is not to scale. Follow dimensions.

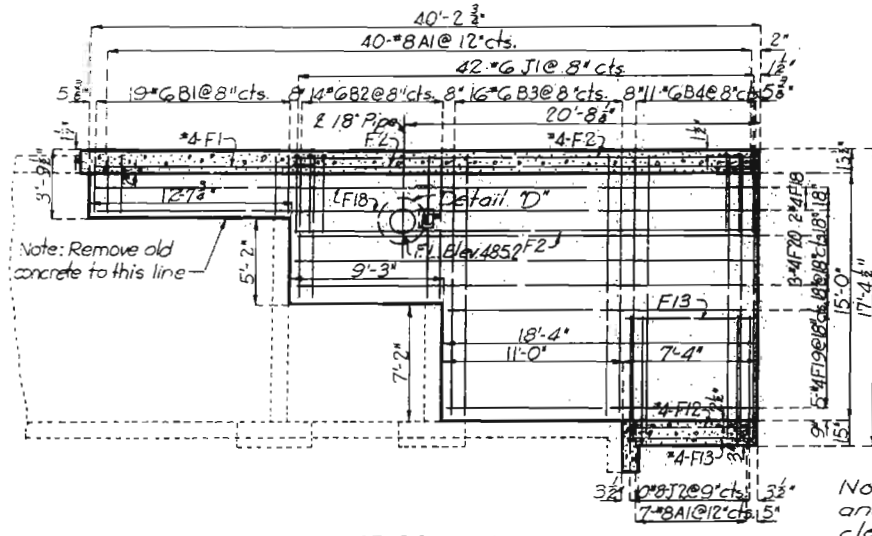
Sheet No. 3 of 8.

NO CONSTRUCTION CHANGES

J-6000

MISSOURI STATE HIGHWAY DEPARTMENT

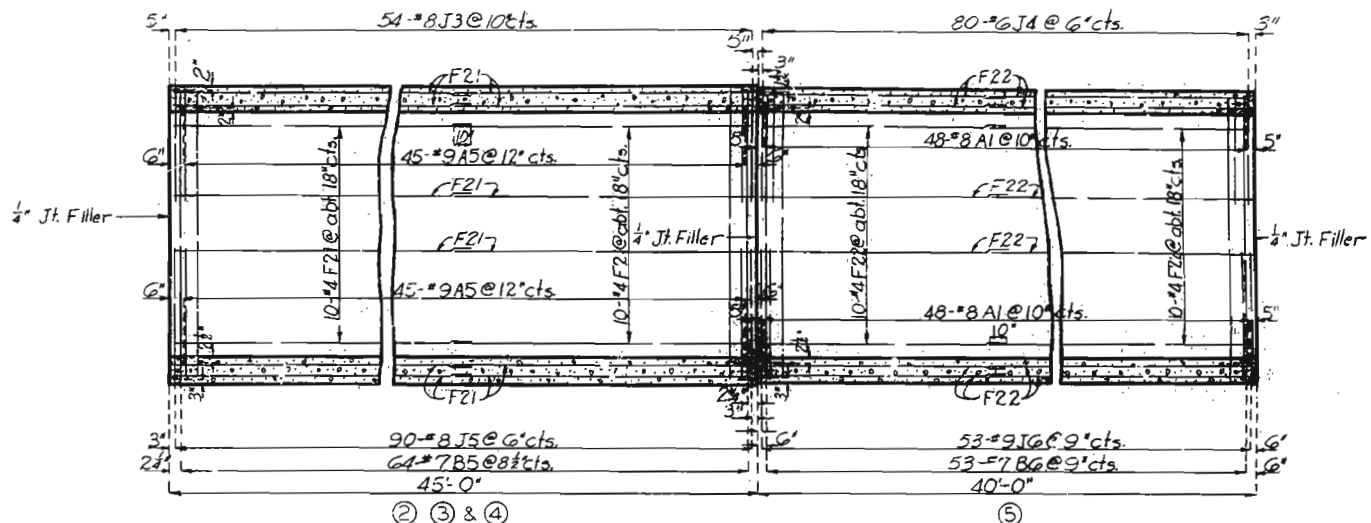
FED. ROAD DIST. NO.	STATE	FED. AID PROJ. NO.	FISCAL YEAR	SHEET NO.	TOTAL SHEETS
5	MO.		19	76	



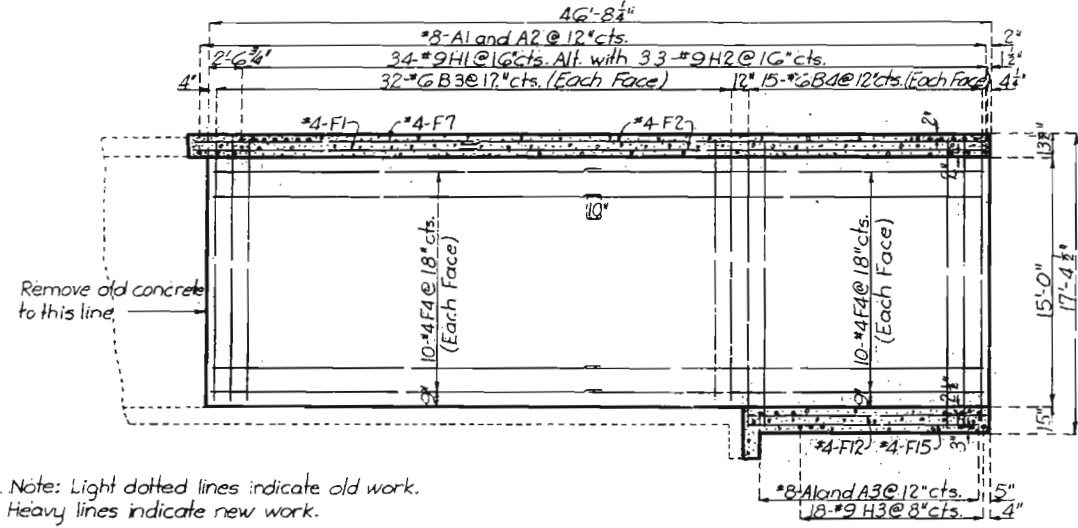
SECTION A-A
(From Sheet No. 3)

Note: For Detail 'D' see Sheet No. 7 of 8.

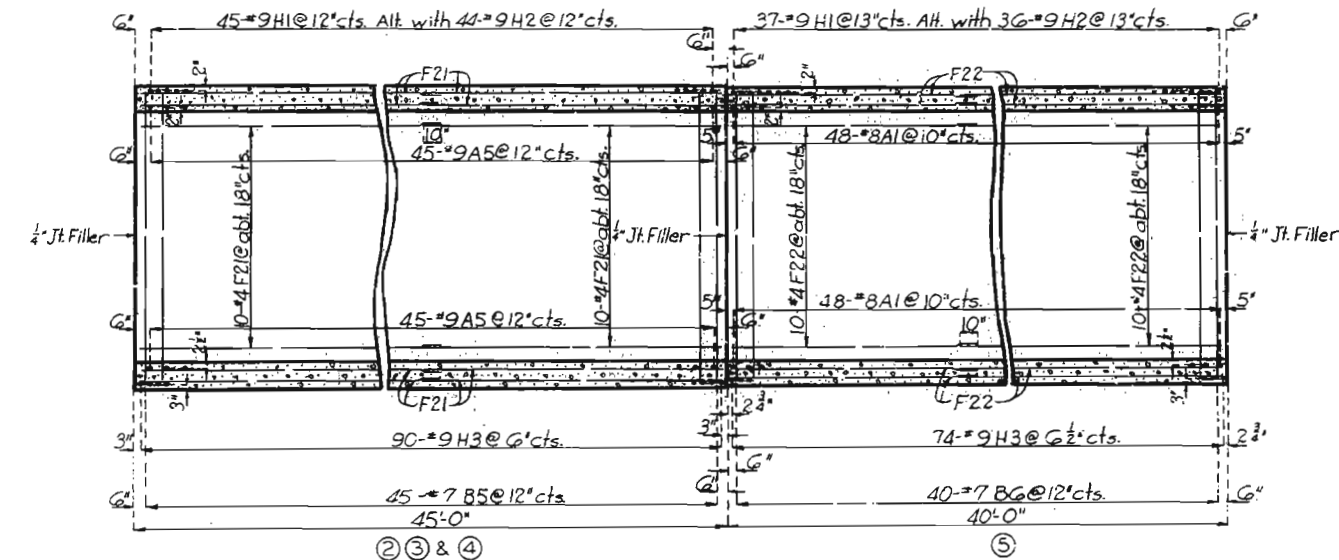
Note: Cut or bend F-bars and B-bars in field to clear pipe.



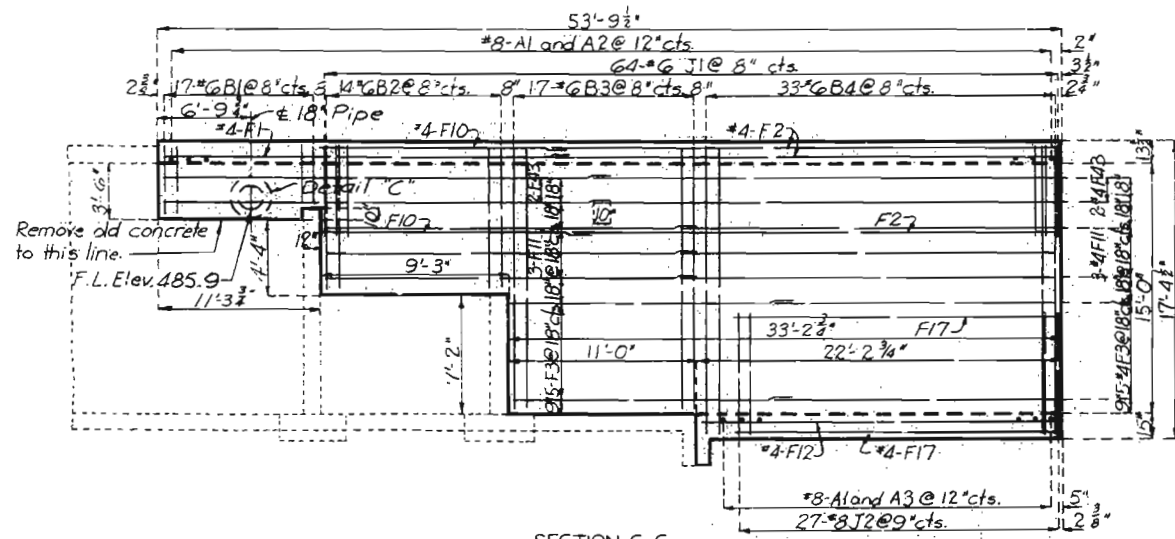
SECTION K-K
(From Sheet No. 4)



SECTION B-B
(From Sheet No. 3)

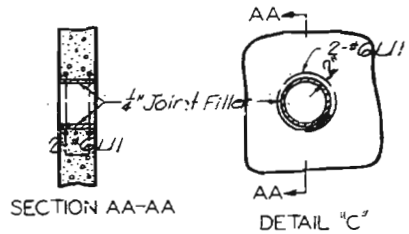


SECTION L-L
(From Sheet No. 4)



SECTION C-C
(From Sheet No. 3)

Note: This drawing is not to scale. Follow dimensions.



SECTION AA-AA

DETAIL 'C'

BRIDGE OVER BRANCH OF MALINE CREEK
 STATE ROAD INTERSTATE ROUTE 270
 ABOUT 3.5 MILES NE OF FERGUSON
 PROJECT NO. I-270-538(RTE. I-270 STA. 527-77.29)
 ST. LOUIS COUNTY

Drawn Feb. 13 by L.G.S.
 Checked Aug. 1922 by B.J.P.

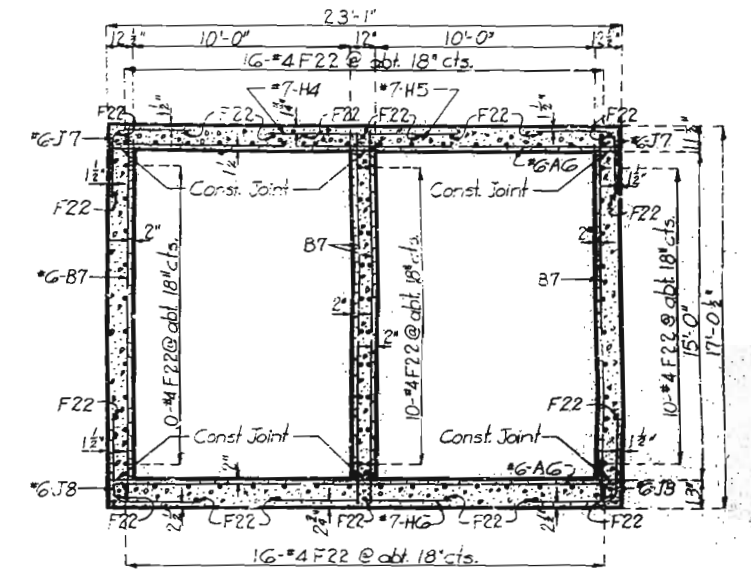
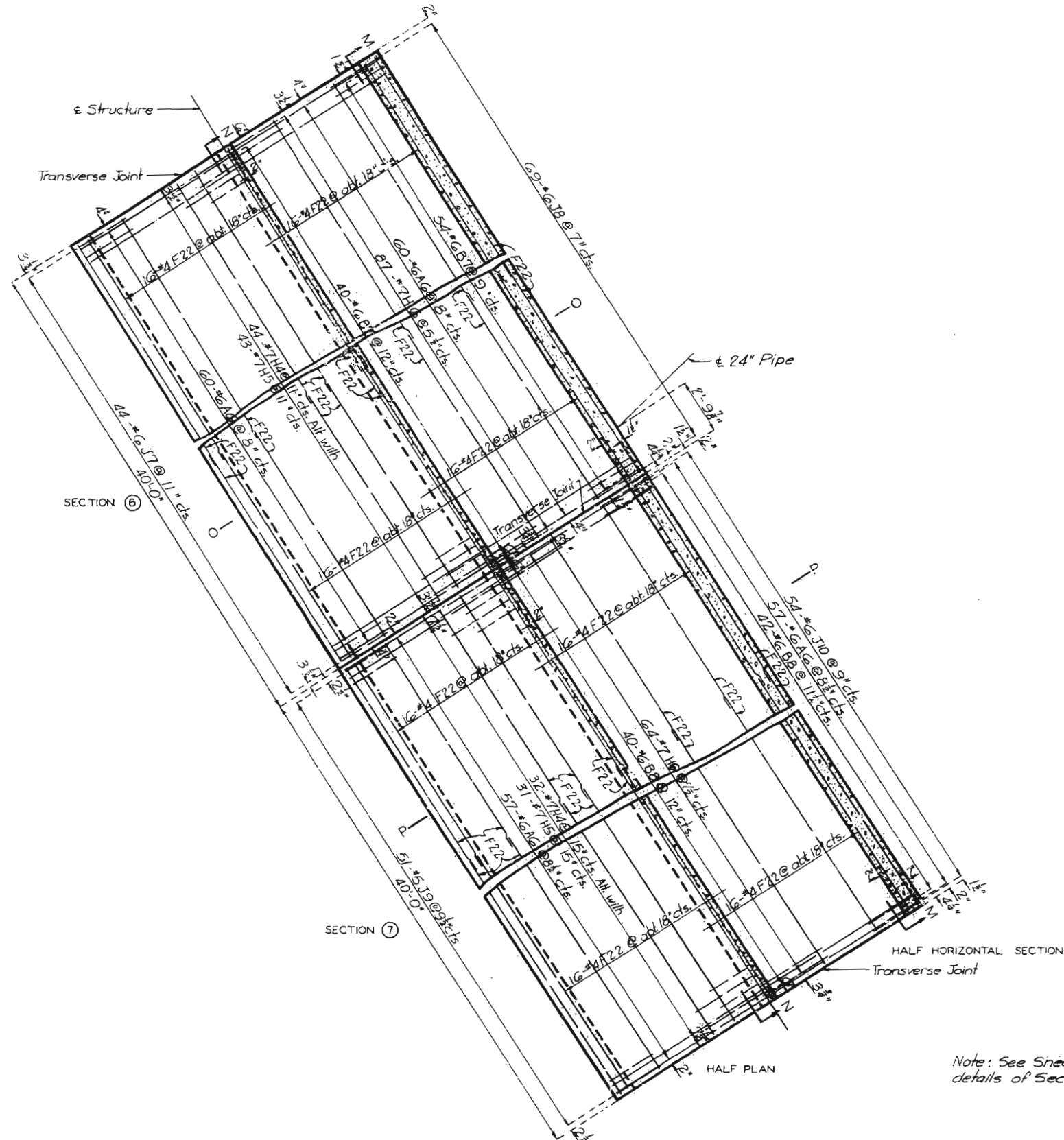
Sheet No. 5 of 8

NO CONSTRUCTION CHANGES

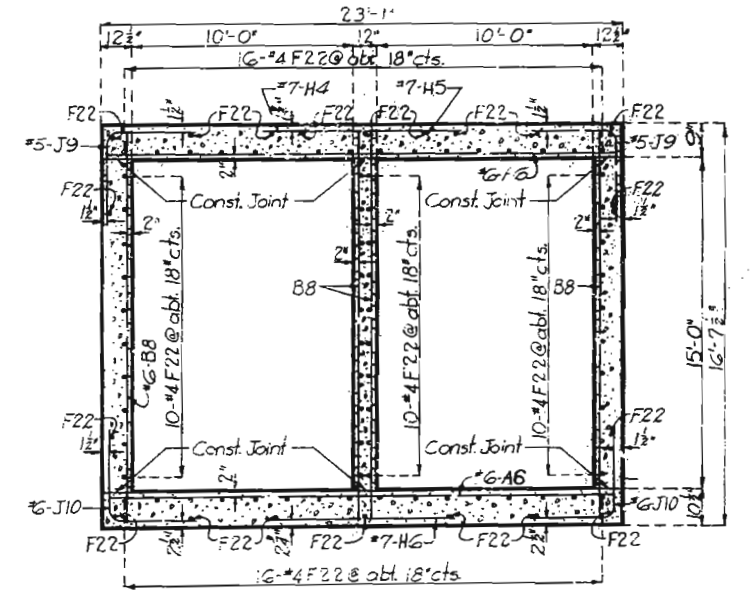
425

MISSOURI STATE HIGHWAY DEPARTMENT

FED. ROAD DIST. NO.	STATE	FED. AID PROJ. NO.	FISCAL YEAR	SHEET NO.	TOTAL SHEETS
5	MO.		19	77	



SECTION O-O



SECTION P-P

DETAILS OF SECTIONS ⑥ & ⑦
(See Sheet 1 of 8)

Note: See Sheet No. 7 of 8 for details of Sections M-M & N-N.

BRIDGE OVER BRANCH OF MALINE CREEK
 STATE ROAD INTERSTATE ROUTE 270
 ABOUT 3.5 MILES N.E. OF FERGUSON
 PROJECT NO. I270-5038X RTE. I270 STA. 527 + 77.29
 ST. LOUIS COUNTY

426

Drawn Jan. 1958 by L.G.S.
 Checked Aug. 1958 by B.J.P.

Note: This drawing is not to scale. Follow dimensions.

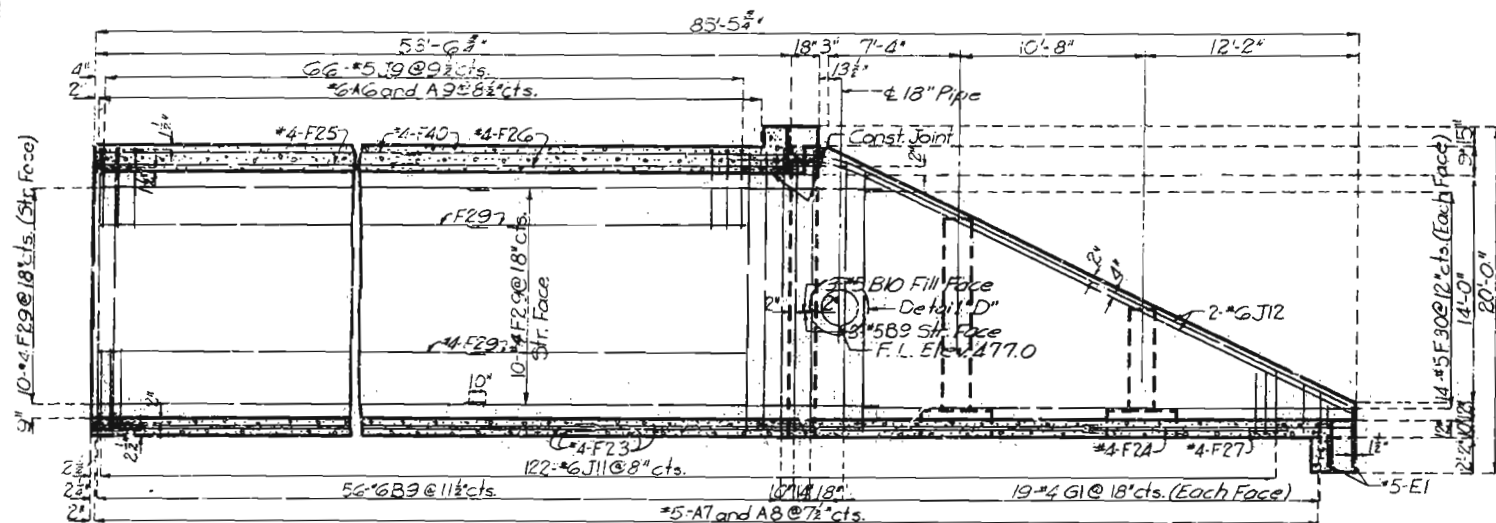
Sheet No. 6 of 8

NO CONSTRUCTION CHANGES

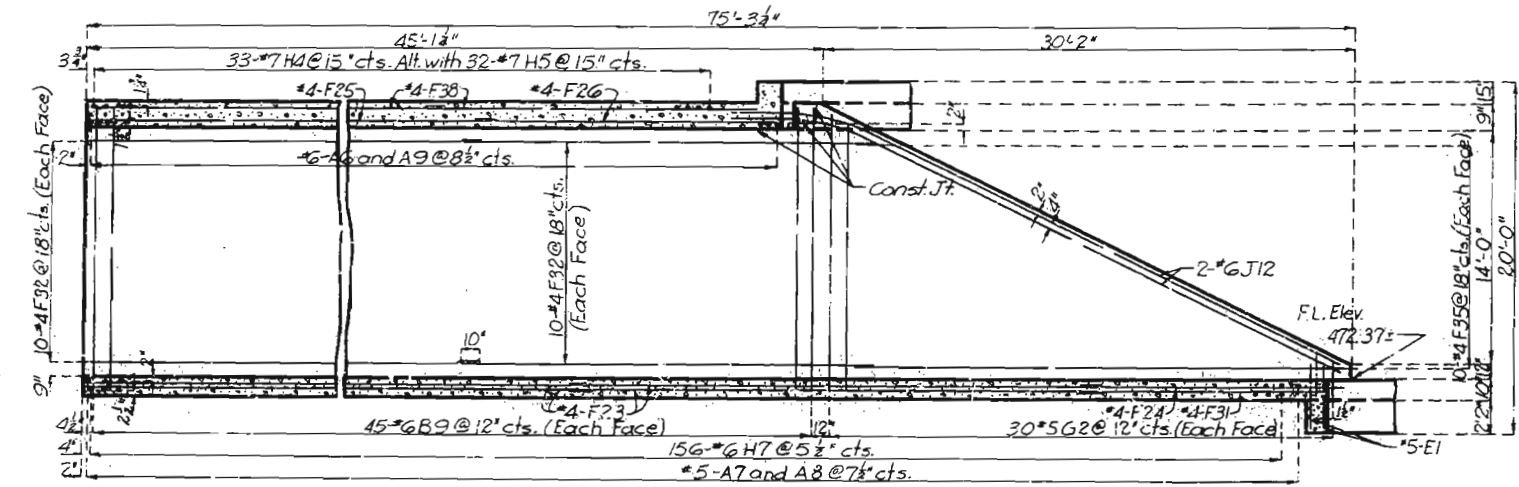
J-858

MISSOURI STATE HIGHWAY DEPARTMENT

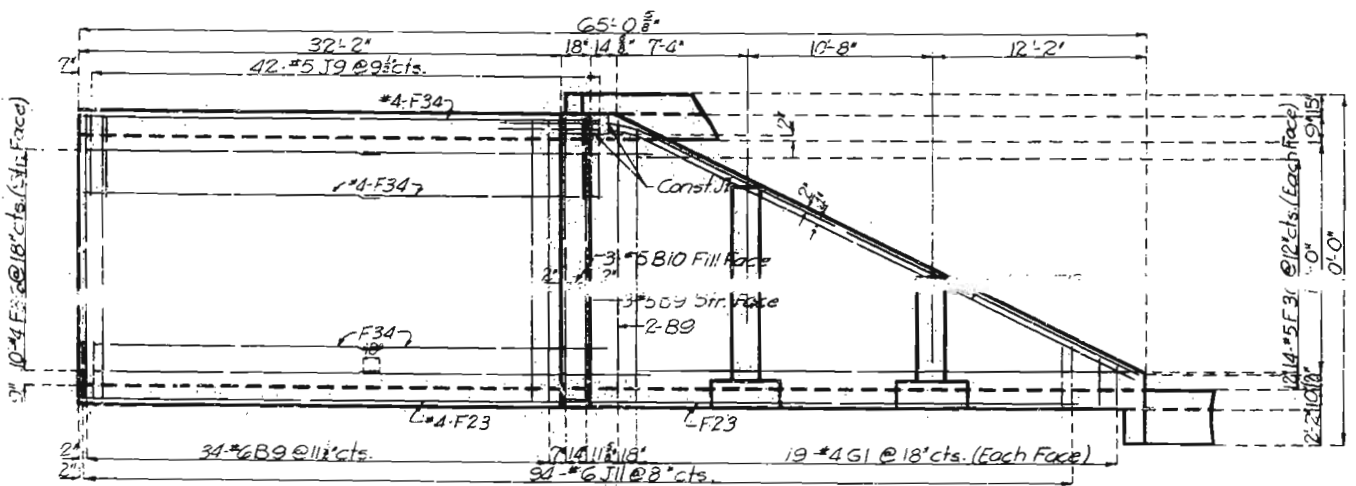
FED. ROAD DIST. NO.	STATE NO.	FED. AID PROJ. NO.	FISCAL YEAR	SHEET NO.	TOTAL SHEETS
5			19	78	



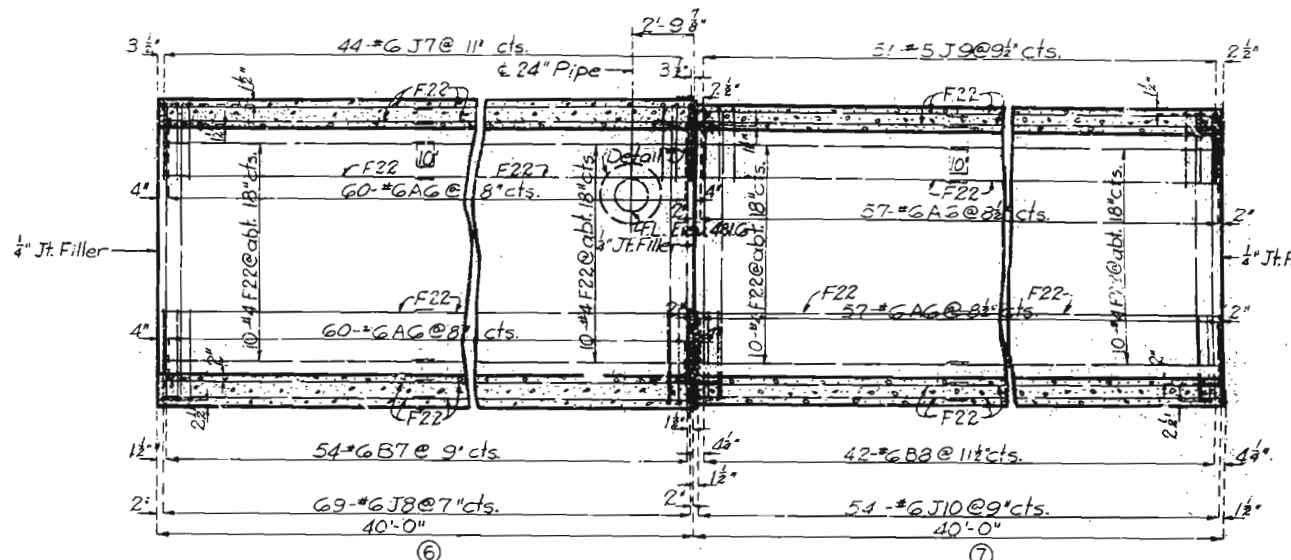
SECTION R-R
(From Sheet No. 8) Note: Cut or bend F-bars and G-bars in field to clear pipe.



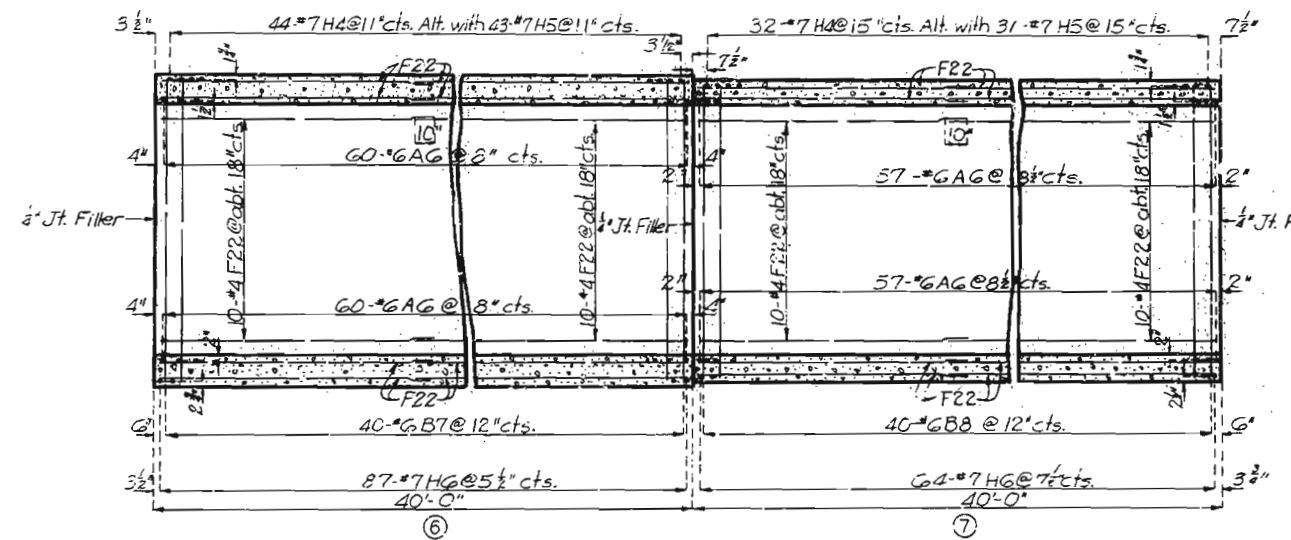
SECTION S-S
(From Sheet No. 8)



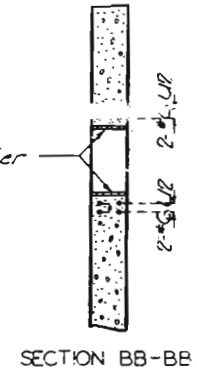
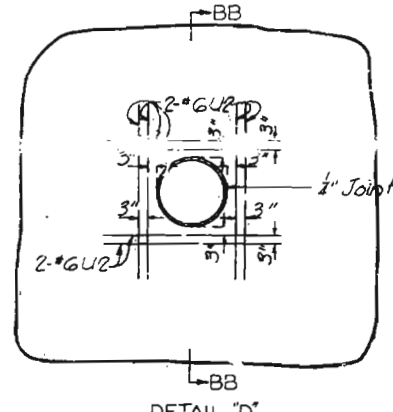
ELEVATION T-T
(From Sheet No. 8)



SECTION M-M
(From Sheet No. 6) Note: Cut or bend F-bars and B-bars in field to clear pipe.



SECTION N-N
(From Sheet No. 6)



BRIDGE OVER BRANCH OF MALINE CREEK
 STATE ROAD: INTERSTATE ROUTE 270
 ABOUT 3.5 MILES NE. OF FERGUSON
 PROJECT NO. I-270-538XRT-E-270STA 527+77.29
 ST. LOUIS COUNTY

427

Drawn Mar. 1958 by L.G.S.
 Checked Aug. 1958 by B.J.P.

Note: This drawing is not to scale. Follow dimensions.

Sheet No. 7 of 8

NO CONSTRUCTION CHANGES



