

June 14, 2024

To: Plan Holders for Improvements to the
KIRKSVILLE REGIONAL AIRPORT
KIRKSVILLE, MISSOURI
MODOT PROJECT NO. 24-028A-1

Transmitted herewith is Addendum **No. 2** to the Issued for Bid Contract Documents, Specifications and Plans dated May 30, 2024 for Improvements to the IRK Airport.

Schedule I Construct New Terminal Building

Schedule II Reconstruct Terminal Parking Lot

Schedule III Demolish Existing Terminal and Construct New Parking Lot

Sincerely,

Woolpert, Inc.



Adam Acree
Project Manager

**ADDENDUM NO. 2
TO
CONTRACT DOCUMENTS, SPECIFICATIONS AND PLANS
FOR IMPROVEMENTS TO THE
KIRKSVILLE REGIONAL AIRPORT
KIRKSVILLE, MISSOURI
MODOT PROJECT NO. 24-028A-1**

To All Bidders: You are requested to make all changes and/or additions contained in this addendum to the Bidding Documents. Failure to acknowledge this Addendum in Proposal shall result in rejection of bid. Bidders are informed that the above referenced Contract Documents, Specifications and Plans are modified as follows as of June 14, 2024:

1. SPECIFICATIONS:

Sheet No.: Sections 01 33 00

Title: SUBMITTAL PROCEDURES

Revision: Added information regarding Web-Based Project Software: Pro-Core.

Justification: Contractor requirements related to Pro-Core.

2. PLANS

Sheet No.: G-000

Title: COVER SHEET AND INDEX

Revision: Revised Sheet Index

Justification: Updated sheet listing

Sheet No.: G-002

Title: LIFE SAFETY PLAN AND CODE SUMMARY

Revision: Updated Code Plan

Justification: Added 1-hr wall on north wall.

Sheet No.: S-110

Title: LOWER ROOF FRAMING PLAN

Revision: Refer to updates at TSA Offices

Justification: Clarification

Sheet No.: S-130

Title: ELEVATIONS 1

Revision: Updated Steel Framing

Justification: Clarification

Sheet No.: S-140
Title: ELEVATIONS 2
Revision: Updated Steel Framing
Justification: Clarification

Sheet No.: A-501
Title: MISCELLANEOUS DETAILS
Revision: A4/A-501 Foundation Detail
Justification: Added Damp proofing to foundation walls.

Sheet No.: ME-001
Title: SCHEDULES AND SPECS
Revision: Entire Sheet resubmitted for clarity
Justification: Clarification

Sheet No.: P-101
Title: PLUMBING PLAN
Revision: Entire Sheet resubmitted for clarity. Storage Room 121 – removed floor drain and future sprinkler connection.
Justification: Clarification

Sheet No.: P-601
Title: WATER RISER DIAGRAM
Revision: Entire New Sheet submitted for clarity.
Justification: Clarification

Sheet No.: P-602
Title: SUPPLY RISER DIAGRAM
Revision: Entire New Sheet submitted for clarity.
Justification: Clarification

Sheet No.: M-101
Title: HVAC PLAN
Revision: Entire Sheet resubmitted for clarity
Justification: Clarification

Sheet No.: E-101
Title: POWER PLAN
Revision: Entire Sheet resubmitted for clarity – Outlet added at Janitor closet. Floor boxes added in lobby waiting area and Hold Room.
Justification: Clarification

Sheet No.: E-103
Title: PANEL SCHEDULES AND ELECTRICAL RISER
Revision: Entire Sheet resubmitted for clarity
Justification: Clarification

**** END OF ADDENDUM NO. 2****

SECTION 01 33 00 - SUBMITTAL PROCEDURES

PART 1 - GENERAL

1.1 RELATED DOCUMENTS

- A. Drawings and general provisions of the Contract, including General and Supplementary Conditions and other Division 01 Specification Sections, apply to this Section.

1.2 SUMMARY

- A. Section Includes:

- 1. Submittal schedule requirements.
- 2. Administrative and procedural requirements for submittals.

- B. Related Requirements:

- 1. Section 012900 "Payment Procedures" for submitting Applications for Payment and the schedule of values.
- 2. Section 013100 "Project Management and Coordination" for submitting coordination drawings and subcontract list and for requirements for web-based Project software.
- 3. Section 013200 "Construction Progress Documentation" for submitting schedules and reports, including Contractor's construction schedule.
- 4. Section 013233 "Photographic Documentation" for submitting preconstruction photographs, periodic construction photographs, and final completion construction photographs.
- 5. Section 014000 "Quality Requirements" for submitting test and inspection reports, and schedule of tests and inspections.
- 6. Section 017700 "Closeout Procedures" for submitting closeout submittals and maintenance material submittals.
- 7. Section 017823 "Operation and Maintenance Data" for submitting operation and maintenance manuals.
- 8. Section 017839 "Project Record Documents" for submitting record Drawings, record Specifications, and record Product Data.
- 9. Section 017900 "Demonstration and Training" for submitting video recordings of demonstration of equipment and training of Owner's personnel.

1.3 DEFINITIONS

- A. Action Submittals: Written and graphic information and physical samples that require Owner's Representative responsive action. Action submittals are those submittals indicated in individual Specification Sections as "action submittals."
- B. Informational Submittals: Written and graphic information and physical samples that do not require Owner's Representative responsive action. Submittals may be rejected for not

complying with requirements. Informational submittals are those submittals indicated in individual Specification Sections as "informational submittals."

1.4 SUBMITTAL SCHEDULE

- A. Submittal Schedule: Submit, as an action submittal, a list of submittals, arranged in chronological order by dates required by construction schedule. Include time required for review, ordering, manufacturing, fabrication, and delivery when establishing dates. Include additional time required for making corrections or revisions to submittals noted by Owner's Representative and additional time for handling and reviewing submittals required by those corrections.
1. Coordinate submittal schedule with list of subcontracts, the schedule of values, and Contractor's construction schedule.
 2. Initial Submittal: Submit concurrently with startup construction schedule. Include submittals required during the first 60 days of construction. List those submittals required to maintain orderly progress of the Work and those required early because of long lead time for manufacture or fabrication.
 3. Final Submittal: Submit concurrently with the first complete submittal of Contractor's construction schedule.
 - a. Submit revised submittal schedule to reflect changes in current status and timing for submittals.
 4. Format: Arrange the following information in a tabular format:
 - a. Scheduled date for first submittal.
 - b. Specification Section number and title.
 - c. Submittal Category: Action; informational.
 - d. Name of subcontractor.
 - e. Description of the Work covered.
 - f. Scheduled date for Owner's Representative final release or approval.
 - g. Scheduled dates for purchasing.
 - h. Scheduled date of fabrication.
 - i. Scheduled dates for installation.
 - j. Activity or event number.

1.5 SUBMITTAL FORMATS

- A. Submittal Information: Include the following information in each submittal:
1. Project name.
 2. Date.
 3. Name of Owner's Representative.
 4. Name of Construction Manager.
 5. Name of Contractor.
 6. Name of firm or entity that prepared submittal.
 7. Names of subcontractor, manufacturer, and supplier.

8. Unique submittal number, including revision identifier. Include Specification Section number with sequential alphanumeric identifier; and alphanumeric suffix for resubmittals.
9. Category and type of submittal.
10. Submittal purpose and description.
11. Number and title of Specification Section, with paragraph number and generic name for each of multiple items.
12. Drawing number and detail references, as appropriate.
13. Indication of full or partial submittal.
14. Location(s) where product is to be installed, as appropriate.
15. Other necessary identification.
16. Remarks.
17. Signature of transmitter.

B. Options: Identify options requiring selection by Architect.

C. Deviations and Additional Information: On each submittal, clearly indicate deviations from requirements in the Contract Documents, including minor variations and limitations; include relevant additional information and revisions, other than those requested by Owner's Representative on previous submittals. Indicate by highlighting on each submittal or noting on attached separate sheet.

D. Electronic Submittals:

1. Place a permanent label or title block on each submittal item for identification; include name of firm or entity that prepared submittal.
2. Provide a space approximately 6 by 8 inches on label or beside title block to record Contractor's review and approval markings and action taken by Owner's Representative.
3. Transmittal for Submittals: Assemble each submittal individually and appropriately for transmittal and handling. Transmit each submittal using pre-approved transmittal form found to be acceptable by Owner's Representative.

E. PDF Submittals: Prepare submittals as PDF package, incorporating complete information into a single PDF file. Name PDF file with submittal number.

F. Submittals for Web-Based Project Software: Prepare submittals as PDF files, or other format indicated by Project software website.

1.6 SUBMITTAL PROCEDURES

A. Prepare and submit submittals required by individual Specification Sections. Types of submittals are indicated in individual Specification Sections.

~~1. Email: Prepare submittals as PDF package and transmit to Owner's Representative by sending via email. Include PDF transmittal form. Include information in email subject line as requested by Architect.~~

~~a. Owner's Representative will return annotated file. Annotate and retain one copy of file as a digital Project Record Document file.~~

2. **Web-Based Project Software: Prepare submittals in PDF form, and upload to web-based Project software website. Enter required data in web-based software site to fully identify submittal.**
 - a. **Owner’s Representative will return annotated file. Annotate and retain one copy of file as a digital Project Record Document file.**
 - b. **Examples of Web-Based Project Software include, but not limited to Procore and NewForma.**
 - ~~3. **Paper: Prepare submittals in paper form and deliver to Owner’s Representative.**~~
- B. **Coordination: Coordinate preparation and processing of submittals with performance of construction activities.**
1. Coordinate each submittal with fabrication, purchasing, testing, delivery, other submittals, and related activities that require sequential activity.
 2. Submit all submittal items required for each Specification Section concurrently unless partial submittals for portions of the Work are indicated on approved submittal schedule.
 3. Submit action submittals and informational submittals required by the same Specification Section as separate packages under separate transmittals.
 4. Coordinate transmittal of submittals for related parts of the Work specified in different Sections so processing will not be delayed because of need to review submittals concurrently for coordination.
 - a. Owner’s Representative reserves the right to withhold action on a submittal requiring coordination with other submittals until related submittals are received.
- C. **Processing Time: Allow time for submittal review, including time for resubmittals, as follows. Time for review shall commence on Owner's Representative receipt of submittal. No extension of the Contract Time will be authorized because of failure to transmit submittals enough in advance of the Work to permit processing, including resubmittals.**
1. **Initial Review: Allow 15 days for initial review of each submittal. Allow additional time if coordination with subsequent submittals is required. Owner’s Representative will advise Contractor when a submittal being processed must be delayed for coordination.**
 2. **Intermediate Review: If intermediate submittal is necessary, process it in same manner as initial submittal.**
 3. **Resubmittal Review: Allow 15 days for review of each resubmittal.**
 4. **Sequential Review: Where sequential review of submittals by Architect's consultants, Owner, or other parties is indicated, allow 21 days for initial review of each submittal.**
 - a. Contractor to provide a list of submittals they wish to have partial or sequential reviews provided.
 5. **Concurrent Consultant Review: Where the Contract Documents indicate that submittals may be transmitted simultaneously to Architect and to Architect's consultants, allow 15 days for review of each submittal. Submittal will be returned to Owner’s Representative before being returned to Contractor.**

- a. Submit one copy of submittal to concurrent reviewer in addition to specified number of copies to Owner's Representative.
- D. Resubmittals: Make resubmittals in same form and number of copies as initial submittal.
1. Note date and content of previous submittal.
 2. Note date and content of revision in label or title block and clearly indicate extent of revision.
 3. Resubmit submittals until they are marked with approval notation from Owner's Representative action stamp.
- E. Distribution: Furnish copies of final submittals to manufacturers, subcontractors, suppliers, fabricators, installers, authorities having jurisdiction, and others as necessary for performance of construction activities. Show distribution on transmittal forms.
- F. Use for Construction: Retain complete copies of submittals on Project site. Use only final action submittals that are marked with approval notation from Owner's Representative action stamp.

1.7 SUBMITTAL REQUIREMENTS

- A. Product Data: Collect information into a single submittal for each element of construction and type of product or equipment.
1. If information must be specially prepared for submittal because standard published data are unsuitable for use, submit as Shop Drawings, not as Product Data.
 2. Mark each copy of each submittal to show which products and options are applicable.
 3. Include the following information, as applicable:
 - a. Manufacturer's catalog cuts.
 - b. Manufacturer's product specifications.
 - c. Standard color charts.
 - d. Statement of compliance with specified referenced standards.
 - e. Testing by recognized testing agency.
 - f. Application of testing agency labels and seals.
 - g. Notation of coordination requirements.
 - h. Availability and delivery time information.
 4. For equipment, include the following in addition to the above, as applicable:
 - a. Wiring diagrams that show factory-installed wiring.
 - b. Printed performance curves.
 - c. Operational range diagrams.
 - d. Clearances required to other construction, if not indicated on accompanying Shop Drawings.
 5. Submit Product Data before Shop Drawings, and before or concurrent with Samples.
- B. Shop Drawings: Prepare Project-specific information, drawn accurately to scale. Do not base Shop Drawings on reproductions of the Contract Documents or standard printed data unless submittal based on Owner's Representative's digital data drawing files is otherwise permitted.

1. Preparation: Fully illustrate requirements in the Contract Documents. Include the following information, as applicable:
 - a. Identification of products.
 - b. Schedules.
 - c. Compliance with specified standards.
 - d. Notation of coordination requirements.
 - e. Notation of dimensions established by field measurement.
 - f. Relationship and attachment to adjoining construction clearly indicated.
 - g. Seal and signature of professional engineer if specified.
 2. Paper Sheet Size: Except for templates, patterns, and similar full-size Drawings, submit Shop Drawings on sheets at least 8-1/2 by 11 inches, but no larger than 30 by 42 inches.
- C. Samples: Submit Samples for review of kind, color, pattern, and texture for a check of these characteristics with other materials.
1. Transmit Samples that contain multiple, related components such as accessories together in one submittal package.
 2. Identification: Permanently attach label on unexposed side of Samples that includes the following:
 - a. Project name and submittal number.
 - b. Generic description of Sample.
 - c. Product name and name of manufacturer.
 - d. Sample source.
 - e. Number and title of applicable Specification Section.
 - f. Specification paragraph number and generic name of each item.
 3. Email Transmittal: Provide PDF transmittal. Include digital image file illustrating Sample characteristics, and identification information for record.
 4. Web-Based Project Software: Prepare submittals in PDF form, and upload to web-based Project software website. Enter required data in web-based software site to fully identify submittal.
 5. Paper Transmittal: Include paper transmittal including complete submittal information indicated.
 6. Disposition: Maintain sets of approved Samples at Project site, available for quality-control comparisons throughout the course of construction activity. Sample sets may be used to determine final acceptance of construction associated with each set.
 - a. Samples that may be incorporated into the Work are indicated in individual Specification Sections. Such Samples must be in an undamaged condition at time of use.
 - b. Samples not incorporated into the Work, or otherwise designated as Owner's property, are the property of Contractor.
 7. Samples for Initial Selection: Submit manufacturer's color charts consisting of units or sections of units showing the full range of colors, textures, and patterns available.
 - a. Number of Samples: Submit a minimum of three full set(s) of available choices where color, pattern, texture, or similar characteristics are required to be selected

from manufacturer's product line. Owner's Representative will return submittal with options selected.

8. Samples for Verification: Submit full-size units or Samples of size indicated, prepared from same material to be used for the Work, cured and finished in manner specified, and physically identical with material or product proposed for use, and that show full range of color and texture variations expected. Samples include, but are not limited to, the following: partial sections of manufactured or fabricated components; small cuts or containers of materials; complete units of repetitively used materials; swatches showing color, texture, and pattern; color range sets; and components used for independent testing and inspection.
 - a. Number of Samples: Submit four sets of Samples. Owner's Representative will retain three Sample sets; remainder will be returned. Mark up and retain one returned Sample set as a project record Sample.
 - 1) Submit a single Sample where assembly details, workmanship, fabrication techniques, connections, operation, and other similar characteristics are to be demonstrated.
 - 2) If variation in color, pattern, texture, or other characteristic is inherent in material or product represented by a Sample, submit at least four sets of paired units that show approximate limits of variations.
- D. Product Schedule: As required in individual Specification Sections, prepare a written summary indicating types of products required for the Work and their intended location. Include the following information in tabular form:
 1. Type of product. Include unique identifier for each product indicated in the Contract Documents or assigned by Contractor if none is indicated.
 2. Manufacturer and product name, and model number if applicable.
 3. Number and name of room or space.
 4. Location within room or space.
- E. Qualification Data: Prepare written information that demonstrates capabilities and experience of firm or person. Include lists of completed projects with project names and addresses, contact information of architects and owners, and other information specified.
- F. Design Data: Prepare and submit written and graphic information indicating compliance with indicated performance and design criteria in individual Specification Sections. Include list of assumptions and summary of loads. Include load diagrams if applicable. Provide name and version of software, if any, used for calculations. Number each page of submittal.
- G. Certificates:
 1. Certificates and Certifications Submittals: Submit a statement that includes signature of entity responsible for preparing certification. Certificates and certifications shall be signed by an officer or other individual authorized to sign documents on behalf of that entity. Provide a notarized signature where indicated.
 2. Installer Certificates: Submit written statements on manufacturer's letterhead certifying that Installer complies with requirements in the Contract Documents and, where required, is authorized by manufacturer for this specific Project.

3. Manufacturer Certificates: Submit written statements on manufacturer's letterhead certifying that manufacturer complies with requirements in the Contract Documents. Include evidence of manufacturing experience where required.
4. Material Certificates: Submit written statements on manufacturer's letterhead certifying that material complies with requirements in the Contract Documents.
5. Product Certificates: Submit written statements on manufacturer's letterhead certifying that product complies with requirements in the Contract Documents.
6. Welding Certificates: Prepare written certification that welding procedures and personnel comply with requirements in the Contract Documents. Submit record of Welding Procedure Specification and Procedure Qualification Record on AWS forms. Include names of firms and personnel certified.

H. Test and Research Reports:

1. Compatibility Test Reports: Submit reports written by a qualified testing agency, on testing agency's standard form, indicating and interpreting results of compatibility tests performed before installation of product. Include written recommendations for primers and substrate preparation needed for adhesion.
2. Field Test Reports: Submit written reports indicating and interpreting results of field tests performed either during installation of product or after product is installed in its final location, for compliance with requirements in the Contract Documents.
3. Material Test Reports: Submit reports written by a qualified testing agency, on testing agency's standard form, indicating and interpreting test results of material for compliance with requirements in the Contract Documents.
4. Preconstruction Test Reports: Submit reports written by a qualified testing agency, on testing agency's standard form, indicating and interpreting results of tests performed before installation of product, for compliance with performance requirements in the Contract Documents.
5. Product Test Reports: Submit written reports indicating that current product produced by manufacturer complies with requirements in the Contract Documents. Base reports on evaluation of tests performed by manufacturer and witnessed by a qualified testing agency, or on comprehensive tests performed by a qualified testing agency.
6. Research Reports: Submit written evidence, from a model code organization acceptable to authorities having jurisdiction, that product complies with building code in effect for Project. Include the following information:
 - a. Name of evaluation organization.
 - b. Date of evaluation.
 - c. Time period when report is in effect.
 - d. Product and manufacturers' names.
 - e. Description of product.
 - f. Test procedures and results.
 - g. Limitations of use.

1.8 DELEGATED-DESIGN SERVICES

- A. Performance and Design Criteria: Where professional design services or certifications by a design professional are specifically required of Contractor by the Contract Documents, provide products and systems complying with specific performance and design criteria indicated.

1. If criteria indicated are insufficient to perform services or certification required, submit a written request for additional information to Architect.

- B. Delegated-Design Services: In addition to Shop Drawings, Product Data, and other required submittals, submit digitally signed PDF file, signed and sealed by the responsible design professional, for each product and system specifically assigned to Contractor to be designed or certified by a design professional:
 1. **Section 08 Aluminum Curtain Wall System: Engineered drawings and calculations.**
 2. **Section 21 Fire Protection: Engineered drawings and calculations.**
 3. **Section 31 Micro Pile Foundations: Engineered drawings and calculations.**

1.9 CONTRACTOR'S REVIEW

- A. Action Submittals and Informational Submittals: Review each submittal and check for coordination with other Work of the Contract and for compliance with the Contract Documents. Note corrections and field dimensions. Mark with approval stamp before submitting to Owner's Representative.

- B. Contractor's Approval: Indicate Contractor's approval for each submittal with a uniform approval stamp. Include name of reviewer, date of Contractor's approval, and statement certifying that submittal has been reviewed, checked, and approved for compliance with the Contract Documents.
 1. Owner's Representative will not review submittals received from Contractor that do not have Contractor's review and approval.

1.10 OWNER'S REPRESENTATIVE REVIEW

- A. Action Submittals: Owner's Representative will review each submittal, indicate corrections or revisions required, and return it.
 1. PDF Submittals: Owner's Representative will indicate, via markup on each submittal, the appropriate action.
 2. Paper Submittals: Owner's Representative will stamp each submittal with an action stamp and will mark stamp appropriately to indicate action.
 3. Submittals by Web-Based Project Software: Owner's Representative will indicate, on Project software website, the appropriate action.

- B. Informational Submittals: Owner's Representative will review each submittal and will not return it or will return it if it does not comply with requirements. Owner's Representative will forward each submittal to appropriate party.

- C. Partial submittals prepared for a portion of the Work will be reviewed when use of partial submittals has received prior approval from Owner's Representative.

- D. Incomplete submittals are unacceptable, will be considered nonresponsive, and will be returned for resubmittal without review.
- E. Owner’s Representative will return without review or discard submittals received from sources other than Contractor.
- F. Submittals not required by the Contract Documents will be returned by Architect without action.

PART 2 - PRODUCTS (Not Used)

PART 3 - EXECUTION (Not Used)

END OF SECTION 013300

100%
 SUBMITTAL

ISSUED FOR BID
 NOT FOR
 CONSTRUCTION

TERMINAL BUILDING

KIRKSVILLE REGIONAL AIRPORT

MODOT PROJECT NO. 24-028A-1

100% SUBMITTAL - 05/30/2024

PROJECT TEAM

Architecture, Life Safety & Civil Engineering
Woolpert
 4625 Lindell Boulevard, 2nd Floor
 St. Louis, MO 63108
 Attn: Andy Remstad

Structural Engineering
The Vertex Companies
 2420 W. 26th Ave., Suite 100-D
 Denver, CO 80211
 Attn: Greg Hartley

Mechanical, Electrical & Plumbing Engineering
Malicoat-Winslow Engineers
 4840 Rangeline St., #101
 Columbia, MO 65202
 Attn: Fred Malicoat

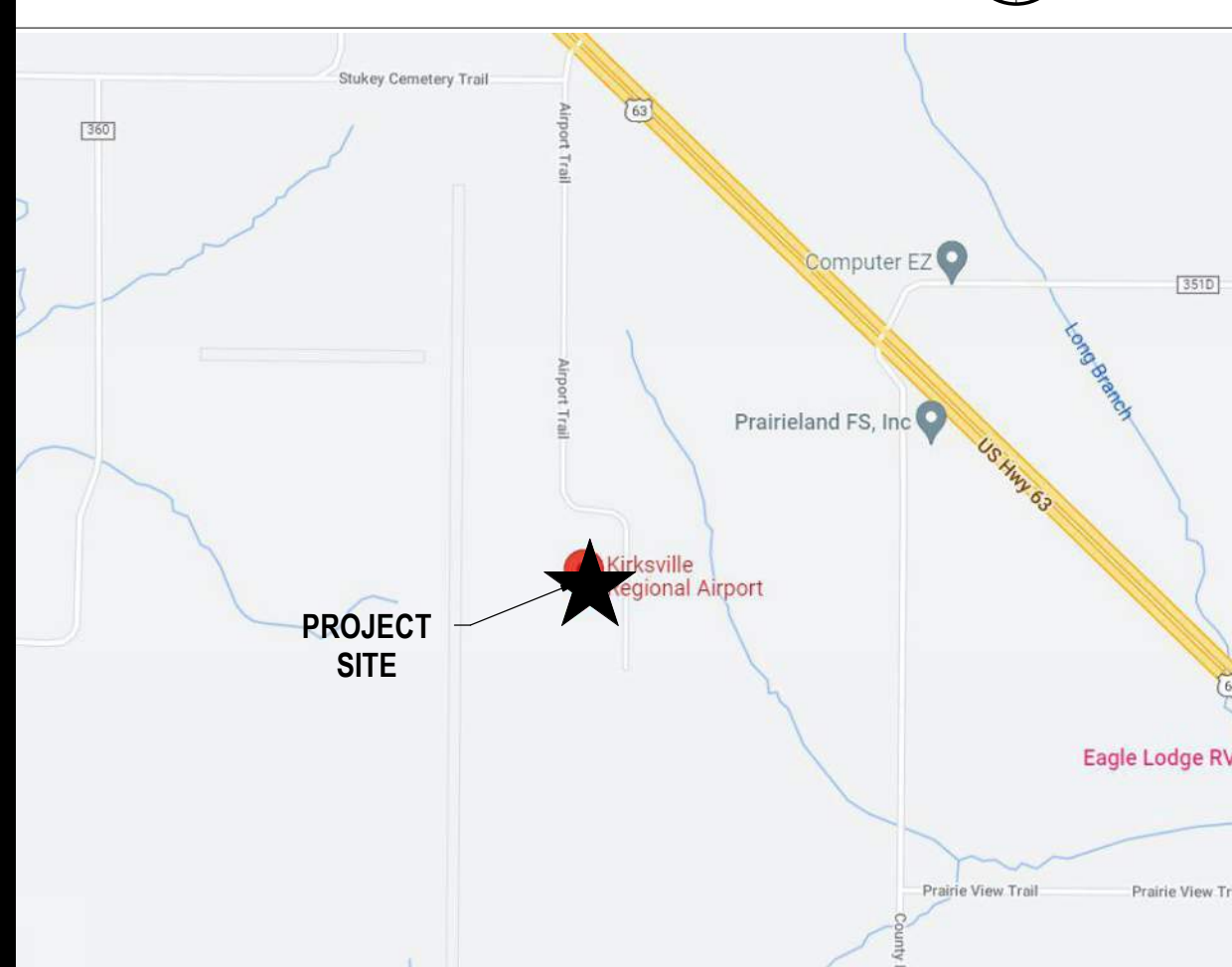
PROJECT IMAGE



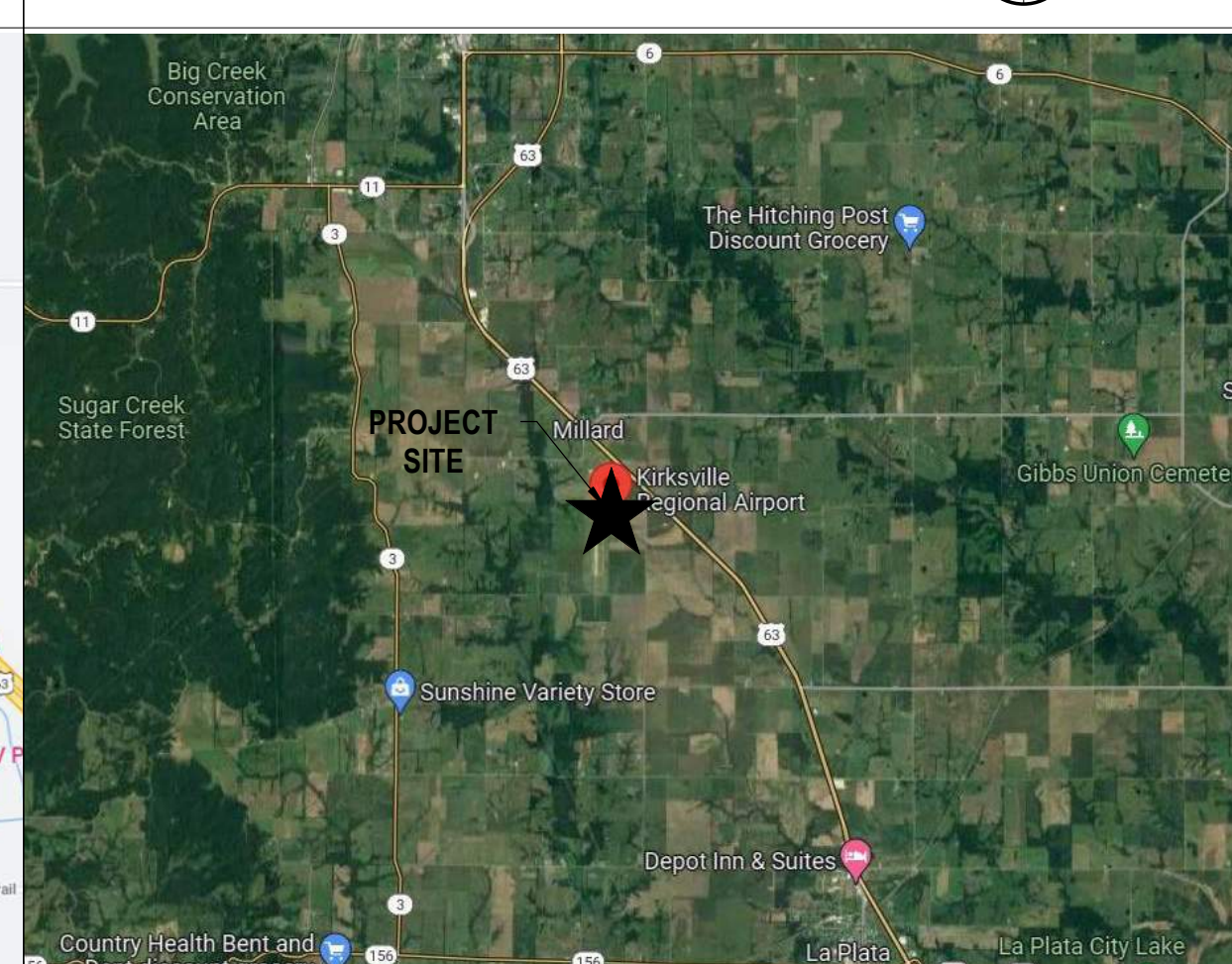
SHEET INDEX

SHEET NUMBER	SHEET NAME	SHEET NUMBER	SHEET NAME
GENERAL		ARCHITECTURE	
G-000	COVER SHEET	A-001	SYMBOLS AND ABBREVIATIONS
G-001	COLOR PERSPECTIVES	A-002	WALL AND ROOF/CEILING TYPES
G-002	LIFE SAFETY PLAN AND CODE SUMMARY	A-100	SLAB PLAN
G-003A	GENERAL NOTES	A-101	FIRST FLOOR PLAN
G-003B	GENERAL NOTES	A-102	FIRST FLOOR HIGH CEILING PLAN
G-004	MASTER LEGEND & ABBREVIATIONS	A-111	FIRST FLOOR REFLECTED CEILING PLAN
G-020	GEOTECHNICAL INVESTIGATION PLAN	A-121	ROOF PLAN
G-021	BORE LOGS	A-201	BUILDING ELEVATIONS
G-050	CONSTRUCTION SAFETY OVERALL PHASING PLAN	A-202	BUILDING ELEVATIONS
G-051	CONSTRUCTION SAFETY NOTES AND DETAILS	A-301	BUILDING SECTIONS
G-052	CONSTRUCTION SAFETY PHASING PLAN SCHEDULE I	A-302	BUILDING SECTIONS
G-053	CONSTRUCTION PHASING PLAN SCHEDULE II - PHASE 1 AND 2	A-311	WALL SECTIONS
G-055	CONSTRUCTION SAFETY PHASING PLAN SCHEDULE III	A-312	WALL SECTIONS
G-070	ENVIRONMENTAL REQUIREMENTS PLAN	A-313	WALL SECTIONS
CIVIL		CIVIL	
CD100	SITE DEMOLITION PLAN	A-401	ENLARGED RESTROOMS PLAN AND SCHEDULE
CD101	SITE UTILITY DEMOLITION PLAN	A-402	ENLARGED TICKETING COUNTER PLAN AND DETAILS
C-200	GEOMETRY PLAN - TERMINAL	A-403	ENLARGED GATE PODIUM PLAN AND DETAILS
C-201	GEOMETRY PLAN - PARKING	A-404	ENLARGED STAIR AND RAMP PLAN, ELEVATIONS, AND SECTIONS
C-220	TYPICAL SECTIONS	A-405	ENLARGED STAIR AND RAMP SECTIONS
C-250	CIVIL SITE DETAILS	A-406	ENLARGED FLUPLFLOW PLAN AND ELEVATIONS
C-251	CIVIL SITE DETAILS	A-451	INTERIOR ELEVATIONS
C-252	CIVIL SITE DETAILS	A-501	MISCELLANEOUS DETAILS
C-300	GRADING PLAN	A-511	CEILING AND WALL BACKING DETAILS
C-320	GRADING SPOT ELEVATION PLAN NEW TERMINAL	A-521	ROOF DETAILS
C-321	GRADING SPOT ELEVATION PLAN NEW TERMINAL	A-522	ROOF DETAILS
C-350	SITE DRAINAGE PLAN AND PROFILE - SLOTTED DRAIN	A-541	CASEWORK DETAILS
C-360	DRAINAGE DETAILS	A-542	CASEWORK DETAILS
C-361	DRAINAGE DETAILS	A-601	DOOR SCHEDULE, TYPES, AND DETAILS
C-700	MARKING PLAN	A-602	DOOR DETAILS
C-701	MARKING PLAN	A-621	STOREFRONT ELEVATIONS AND DETAILS
C-750	PAVEMENT MARKING DETAILS	A-622	STOREFRONT DETAILS
C-751	SIGNAGE DETAILS	A-701	FINISH PLAN AND SCHEDULES
C-800	EROSION CONTROL PLAN	A-702	SIGNAGE, EQUIPMENT, AND FURNITURE PLAN AND SCHEDULES
C-850	EROSION CONTROL DETAILS	A-703	FINISH AND SIGNAGE DETAILS
C-900	WATER PLAN	PLUMBING / MECHANICAL / ELECTRICAL	
C-920	WATER LINE DETAILS	ME-001	SCHEDULES & SPECS
C-930	SANITARY SEWER PLAN	PLUMBING	
CE100	ELECTRICAL LAYOUT PLAN	P-101	PLUMBING PLAN
CE200	ELECTRICAL DETAILS	P-601	WASTE RISER DIAGRAM
STRUCTURAL		P-602	SUPPLY RISER DIAGRAM
S-001	GENERAL NOTES	MECHANICAL	
S-002	GENERAL NOTES (CONT.)	M-101	HVAC PLAN
S-003	STATEMENT OF SPECIAL INSPECTIONS	ELECTRICAL	
S-100	FOUNDATION PLAN	E-101	POWER PLAN
S-110	LOWER ROOF FRAMING PLAN	E-102	LIGHTING PLAN
S-120	ROOF FRAMING PLAN	E-103	PANEL SCHEDULES & ELECTRICAL RISER
S-130	ELEVATIONS 1		
S-140	ELEVATIONS 2		
S-200	TYPICAL FOUNDATION DETAILS		
S-201	TYPICAL FOUNDATION DETAILS		
S-202	TYPICAL FOUNDATION DETAILS		
S-300	TYPICAL STEEL FRAMING DETAILS		
S-301	STEEL ROOF FRAMING DETAILS		
S-302	TYPICAL STEEL DECKING DETAILS		

LOCATION MAP



VICINITY MAP



PROJECT SCHEDULE

- SCHEDULE I**
CONSTRUCT NEW TERMINAL BUILDING
- SCHEDULE II**
RECONSTRUCT TERMINAL PARKING LOT
- SCHEDULE III**
DEMOLISH EXISTING TERMINAL AND CONSTRUCT NEW PARKING LOT

ISSUANCE SCHEDULE



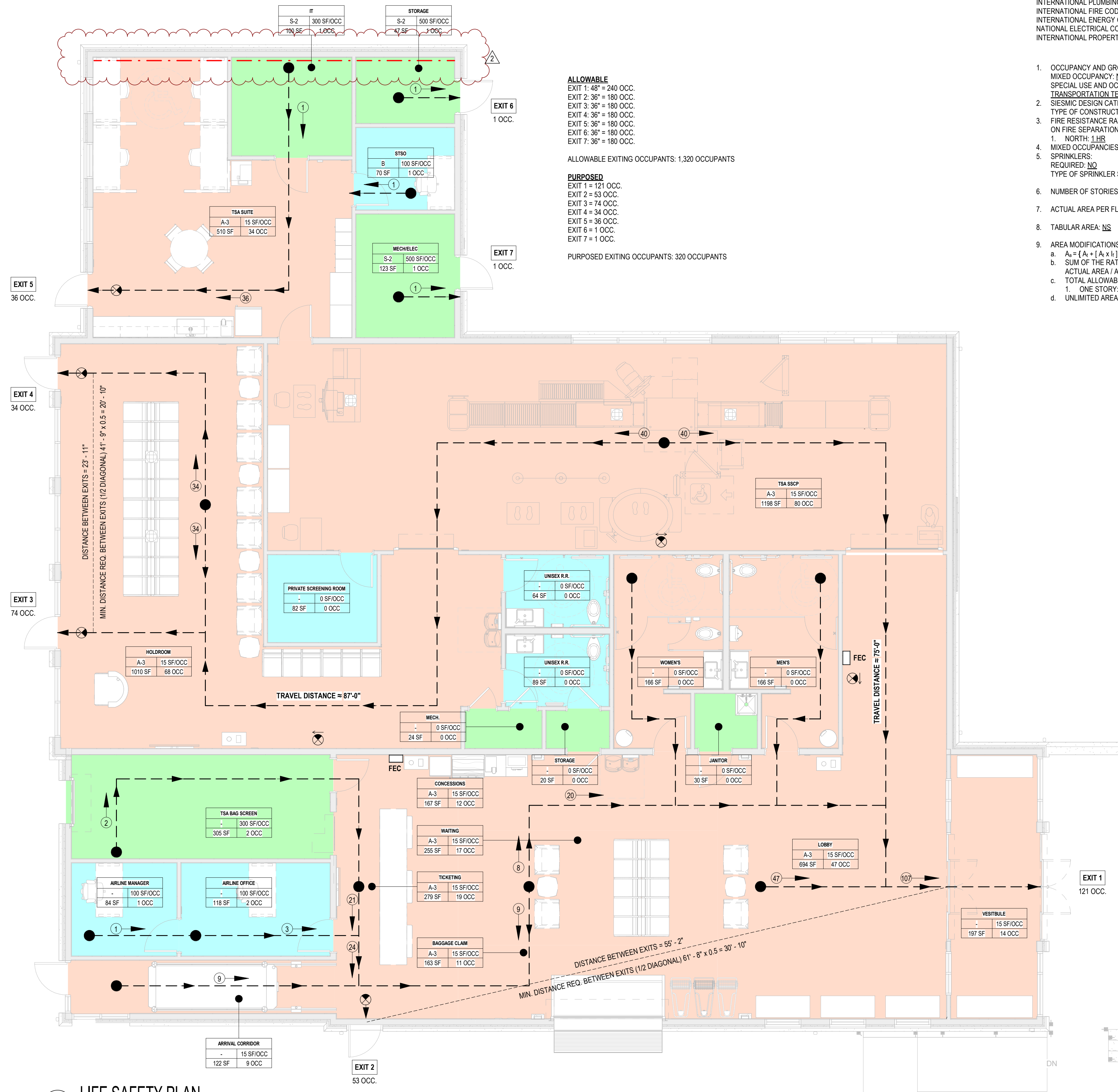
KIRKSVILLE REGIONAL AIRPORT
TERMINAL BUILDING
 27161 DAVID HALL TRAIL
 KIRKSVILLE, MO 63501

PROJECT NO: MODOT 24-028A-1
 DATE ISSUED: 05/30/2024
 DESIGNED BY: AMA
 DRAWN BY: RCS
 CHECKED BY: AJR

SHEET NAME:
 COVER SHEET

SHEET NO:
G-000

6/14/2024 8:50:06 AM Autodesk Docs://aviation - IRK Terminal Building/IRK-Terminal Building-ARCH-R22.rvt



A1 LIFE SAFETY PLAN
3/16" = 1'-0"

PROJECT INFORMATION:

APPLICABLE CODES:

INTERNATIONAL BUILDING CODE	2021
INTERNATIONAL MECHANICAL CODE	2021
INTERNATIONAL FUEL GAS CODE	2021
INTERNATIONAL PLUMBING CODE	2021
INTERNATIONAL FIRE CODE	2021
INTERNATIONAL ENERGY CONSERVATION CODE	2015
NATIONAL ELECTRICAL CODE	2020
INTERNATIONAL PROPERTY MAINTENANCE CODE	2021

- OCCUPANCY AND GROUP: MIXED OCCUPANCY: **NO**
SPECIAL USE AND OCCUPANCY (E.G. HIGH RRISE, COVERED MALL): TRANSPORTATION TERMINAL
- SEISMIC DESIGN CATEGORY: _____ DESIGN WIND SPEED: _____
- FIRE RESISTANCE RATING REQUIREMENTS FOR THE EXTERIOR WALLS BASED ON FIRE SEPARATION DISTANCE (IN HOURS)
1. NORTH: 1 HR SOUTH: 1 HR EAST: 1 HR WEST: 1 HR
- MIXED OCCUPANCIES: **NO** NONSEPARATED USES: YES
- SPRINKLERS: REQUIRED: **NO** PROVIDED: **NO**
TYPE OF SPRINKLER SYSTEM (IBC 903.3.1): **N/A**
- NUMBER OF STORIES: **1** BUILDING HEIGHT: **23'**
- ACTUAL AREA PER FLOOR (SQUARE FEET): **6,360 SF**
- TABULAR AREA: **NS**
- AREA MODIFICATIONS:
a. $A_n = [A_n + (A_n \times I)] + [A_n \times I_n]$ $I_n = [F/P - 0.25] W / 30$
b. SUM OF THE RATIO CALCULATIONS FOR MIXED OCCUPANCIES:
ACTUAL AREA / ALLOWABLE AREA ≤ 1
c. TOTAL ALLOWABLE AREA FOR:
1. ONE STORY: **11,500 SF**
d. UNLIMITED AREA BUILDING: **NO**

10. FIRE RESISTANCE RATING REQUIREMENTS FOR BUILDING ELEMENTS (HOURS)

ELEMENT	HOURS
EXTERIOR BEARING WALLS	1 HR
INTERIOR BEARING WALLS	1 HR
EXTERIOR NON-BEARING WALLS	1 HR
STRUCTURAL FRAME	1 HR
PARTITIONS - PERMANENT	1 HR
FIRE BARRIERS	1 HR
FLOORS - CEILING FLOORS	1 HR
ROOFS - CEILING ROOFS	1 HR
EXTERIOR DOORS AND WINDOWS	1 HR
SHAFT ENCLOSURES	1 HR
FIRE WALLS FIRE PARTITIONS	1 HR
SMOKE PARTITIONS	1 HR

11. DESIGN OCCUPANT LOAD: **329** EXIT WIDTH PROVIDED: _____

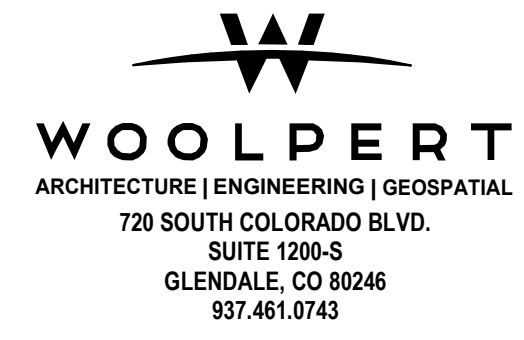
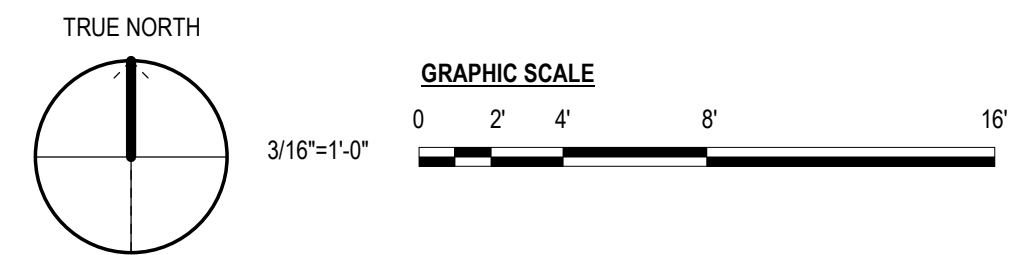
12. MINIMUM NUMBER OF REQUIRED PLUMBING FACILITIES:

ITEM	REQUIRED (M)	(F)	PROVIDED (M)	(F)
A. WATER CLOSETS:				
• URINALS:	1	N/A	1	N/A
• LAVATORIES:	1	N/A	1	N/A
• BATH TUBS OR SHOWERS:	1	0	N/A	N/A
E. DRINKING FOUNTAINS:	1		2	
F. SERVICE SINKS:	1		1	

- FOOTNOTES:**
- IN CASE OF CONFLICT WITH THE U.S. DEPARTMENT OF JUSTICE FEDERAL REGISTERS PARTS I THROUGH V - ADA GUIDELINES AND SPECIFIC REFERENCE TO THE INTERNATIONAL BUILDING CODE ACCESSIBILITY CHAPTERS THE MORE RESTRICTIVE THE REQUIREMENT SHALL GOVERN.
 - ADDITIONAL CODE INFORMATION SHALL BE PROVIDED AT THE DISCRETION OF THE BUILDING OFFICIAL FOR COMPLEX BUILDINGS, INCLUDING BUT NOT LIMITED TO:
A. HIGH RIS REQUIREMENTS.
B. ATRIUMS.
C. PERFORMANCE BASED CRITERIA.
D. MEANS OR EGRESS ANALYSIS.
E. FIRE ASSEMBLY LOCATOR SHEET.
F. EXTERIOR AND INTERIO ACCESSIBILITY ROUTE.
G. FIRE STOPPING, INCLUDING TESTED DESIGN NUMBER.

LEGEND:

- CEILING MOUNTED EXIT SIGN
- FIRE EXTINGUISHER CABINET
- FIRE ALARM PANEL
- EGRESS TAG
NUMBER OF OCCUPANTS EXITING IN DIRECTION OF TRAVEL
- EGRESS
- 1-HR RATED WALL
- ROOM OCCUPANCY TAG**
ROOM NAME
OCCUPANT LOAD
OG: XX SF/OCC
SF: XXX OCC
ROOM OCCUPANCY
OCCUPANCY GROUP
ROOM AREA
- GROUP A-3
- GROUP B
- GROUP S-2



100%
SUBMITTAL

**ISSUED FOR BID
NOT FOR
CONSTRUCTION**

ISSUANCE SCHEDULE

NUMBER	DATE	DESCRIPTION
1	05/30/24	ISSUED FOR BID
2	06/14/24	BID ADD. 2



**KIRKSVILLE REGIONAL AIRPORT
TERMINAL BUILDING**

27161 DAVID HALL TRAIL
KIRKSVILLE, MO 63501

PROJECT NO: MODOT 24-028A-1
DATE ISSUED: 05/30/2024
DESIGNED BY: AMA
DRAWN BY: RCS
CHECKED BY: AJR

SHEET NAME:
**LIFE SAFETY PLAN AND
CODE SUMMARY**

SHEET NO:
G-002

100%
 SUBMITTAL

ISSUED FOR BID
 NOT FOR
 CONSTRUCTION

ISSUANCE SCHEDULE NUMBER	DATE	DESCRIPTION
1	05/30/24	ISSUED FOR BID
2	6/13/2024	ADD #2



KIRKSVILLE REGIONAL AIRPORT
TERMINAL BUILDING

27161 DAVID HALL TRAIL
 KIRKSVILLE, MO 63501

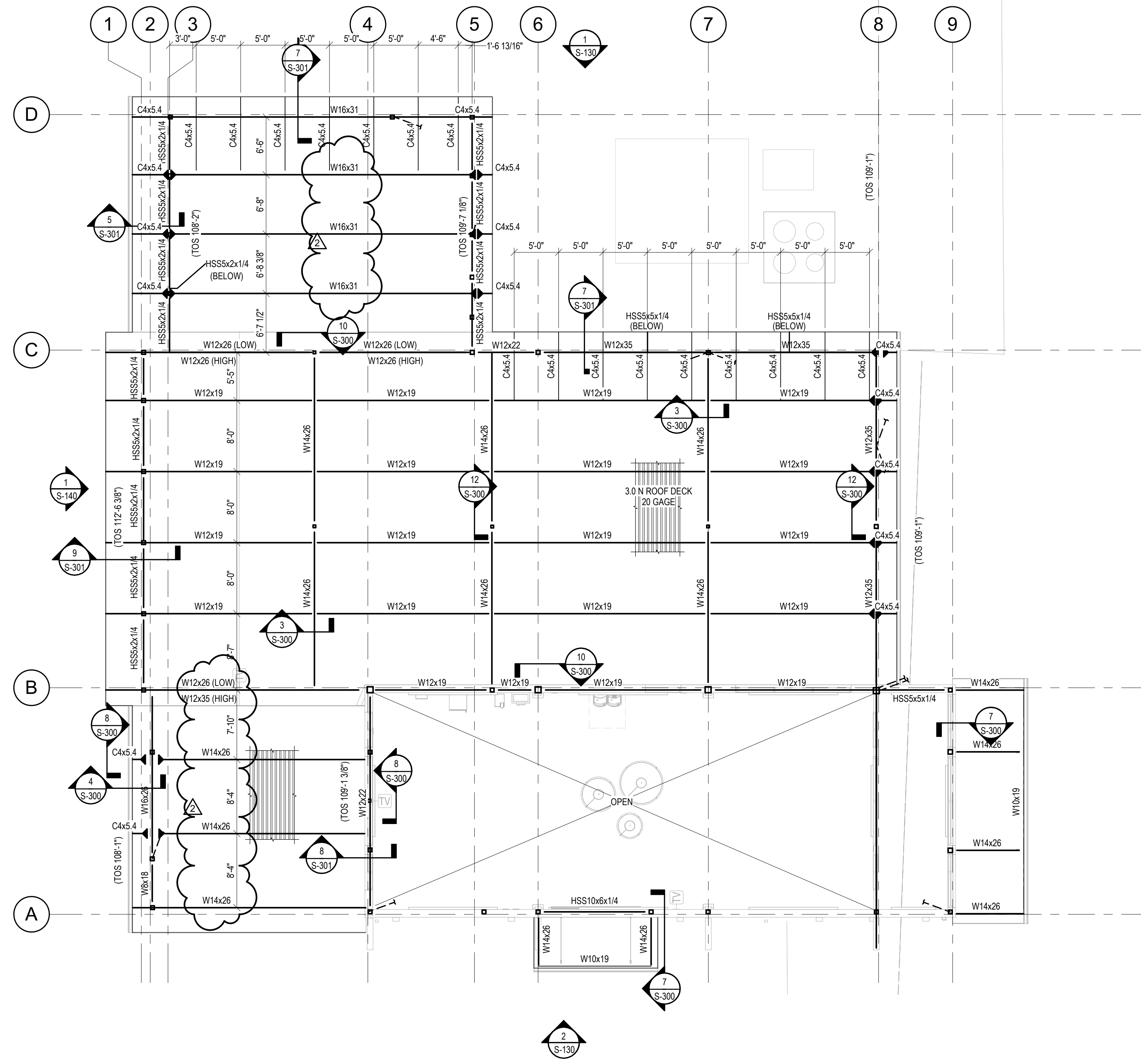
PROJECT NO: MODOT 24-028A-1
 DATE ISSUED: 05/30/2024
 DESIGNED BY: GDH
 DRAWN BY: CR
 CHECKED BY: STM

SHEET NAME:
 LOWER ROOF FRAMING PLAN

SHEET NO:
S-110

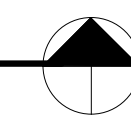
FRAMING PLAN NOTES

- A. SEE SHEET S-001 FOR GENERAL STRUCTURAL NOTES, LEGEND, AND ABBREVIATIONS.
- B. COORDINATE DIMENSIONS WITH ARCHITECTURAL DRAWINGS. SEE ARCHITECTURAL DRAWINGS FOR SLAB SLOPES, STEPS, AND OTHER INFORMATION. RESOLVE ANY DISCREPANCIES WITH ARCHITECT PRIOR TO CONSTRUCTION.
- C. DO NOT SCALE PLANS.
- D. COORDINATE PENETRATIONS THROUGH SLAB AND LOCATIONS OF EQUIPMENT WITH ARCHITECTURAL, MECHANICAL, ELECTRICAL, AND PLUMBING DRAWINGS.
- E. CONTRACTOR SHALL COORDINATE LOCATION AND SIZE OF MECHANICAL EQUIPMENT WITH OTHER DISCIPLINES AND EQUIPMENT MANUFACTURER. NOTIFY ENGINEER IMMEDIATELY IF ACTUAL EQUIPMENT WEIGHT EXCEEDS THE ALLOWANCE SHOWN ON PLAN.
- F. DIMENSIONS ARE TO EDGE OF SLAB, FACE OF WALL, OR CENTERLINE OF COLUMN UNLESS NOTED OTHERWISE. COLUMNS ARE CENTERED ON GRIDS UNLESS NOTED OTHERWISE. COORDINATE AND VERIFY ALL DIMENSIONS WITH ARCHITECTURAL DRAWINGS.



LOWER ROOF FRAMING PLAN

1/8" = 1'-0"



100%
 SUBMITTAL

ISSUED FOR BID
 NOT FOR
 CONSTRUCTION

ISSUANCE SCHEDULE NUMBER	DATE	DESCRIPTION
1	05/30/24	ISSUED FOR BID
2	6/13/2024	ADD #2



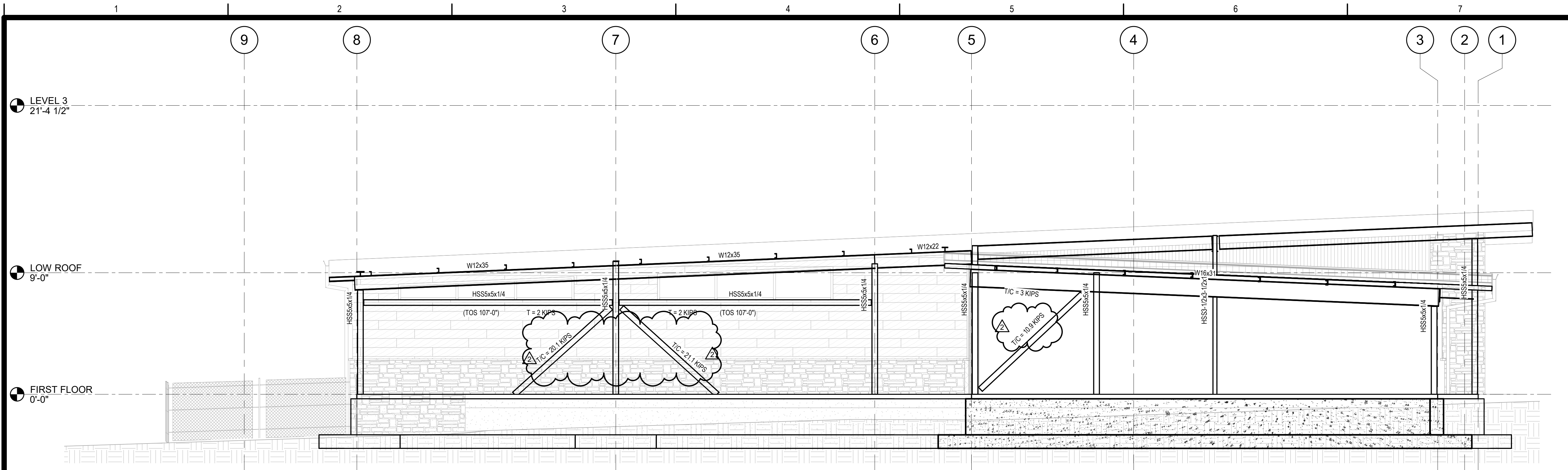
KIRKSVILLE REGIONAL AIRPORT
TERMINAL BUILDING

27161 DAVID HALL TRAIL
 KIRKSVILLE, MO 63501

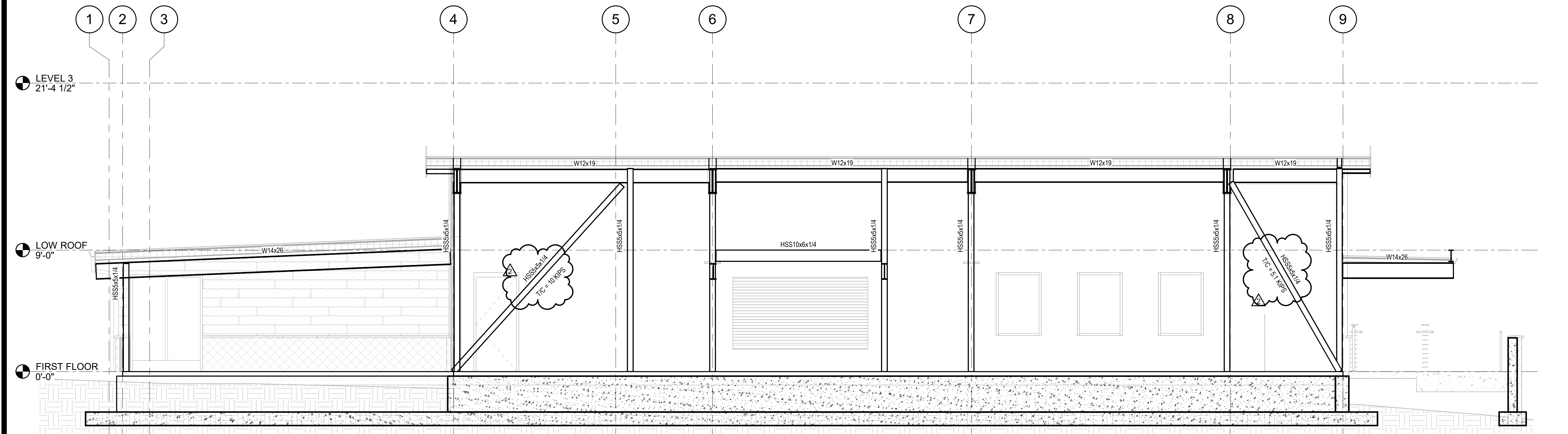
PROJECT NO: MODOT 24-028A-1
 DATE ISSUED: 05/30/2024
 DESIGNED BY: GDH
 DRAWN BY: CR
 CHECKED BY: STM

SHEET NAME:
 ELEVATIONS 1

SHEET NO:
S-130



Elevation 5 - a
 1/4" = 1'-0"



Elevation 3 - a
 1/4" = 1'-0"

6/13/2024 2:19:55 PM
 Autodesk Docs://aviation - IRK Terminal Building95964 IRK - Terminal Building - Struc R22(1).rvt

100%
 SUBMITTAL

ISSUED FOR BID
 NOT FOR
 CONSTRUCTION

ISSUANCE SCHEDULE NUMBER	DATE	DESCRIPTION
1	05/30/24	ISSUED FOR BID
2	6/13/2024	ADD #2



KIRKSVILLE REGIONAL AIRPORT
TERMINAL BUILDING

27161 DAVID HALL TRAIL
 KIRKSVILLE, MO 63501

PROJECT NO: MODOT 24-028A-1
 DATE ISSUED: 05/30/2024
 DESIGNED BY: GDH
 DRAWN BY: CR
 CHECKED BY: STM

SHEET NAME:
 ELEVATIONS 2

SHEET NO:

S-140

LEVEL 3
 21'-4 1/2"

LOW ROOF
 9'-0"

FIRST FLOOR
 0'-0"

Elevation 10 - a

1/4" = 1'-0"

LEVEL 3
 21'-4 1/2"

LOW ROOF
 9'-0"

FIRST FLOOR
 0'-0"

Elevation 11 - a

1/4" = 1'-0"

100%
 SUBMITTAL

ISSUED FOR BID
 NOT FOR
 CONSTRUCTION

NUMBER	DATE	DESCRIPTION
1	05/30/24	ISSUED FOR BID
2	06/14/24	BID ADD. 2



KIRKSVILLE REGIONAL AIRPORT
TERMINAL BUILDING

27161 DAVID HALL TRAIL
 KIRKSVILLE, MO 63501

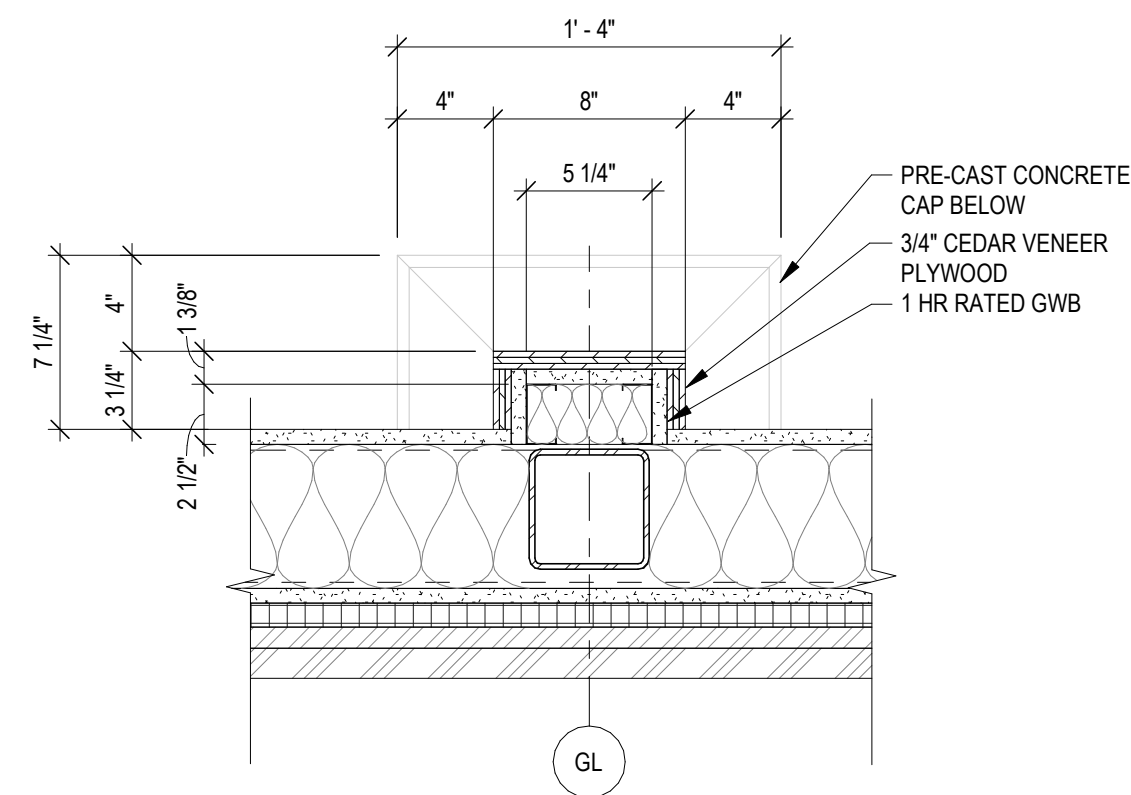
PROJECT NO: MODOT 24-028A-1
 DATE ISSUED: 05/30/2024

DESIGNED BY: AMA
 DRAWN BY: RCS
 CHECKED BY: AJR

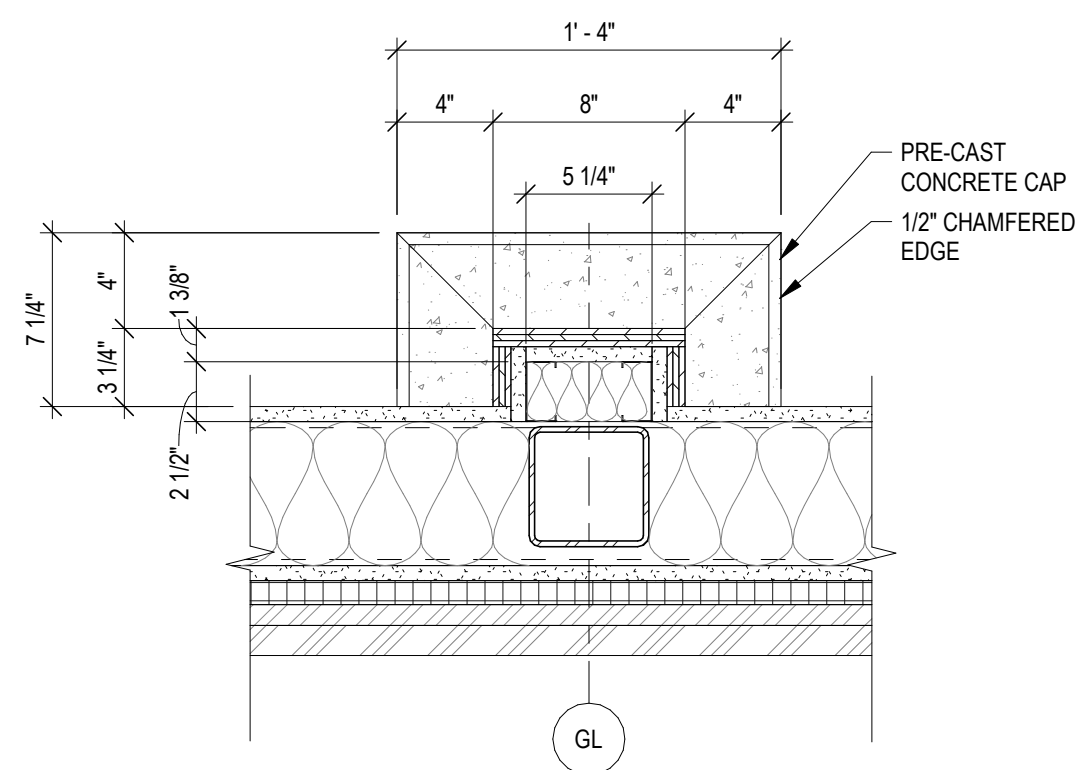
SHEET NAME:
 MISCELLANEOUS DETAILS

SHEET NO:

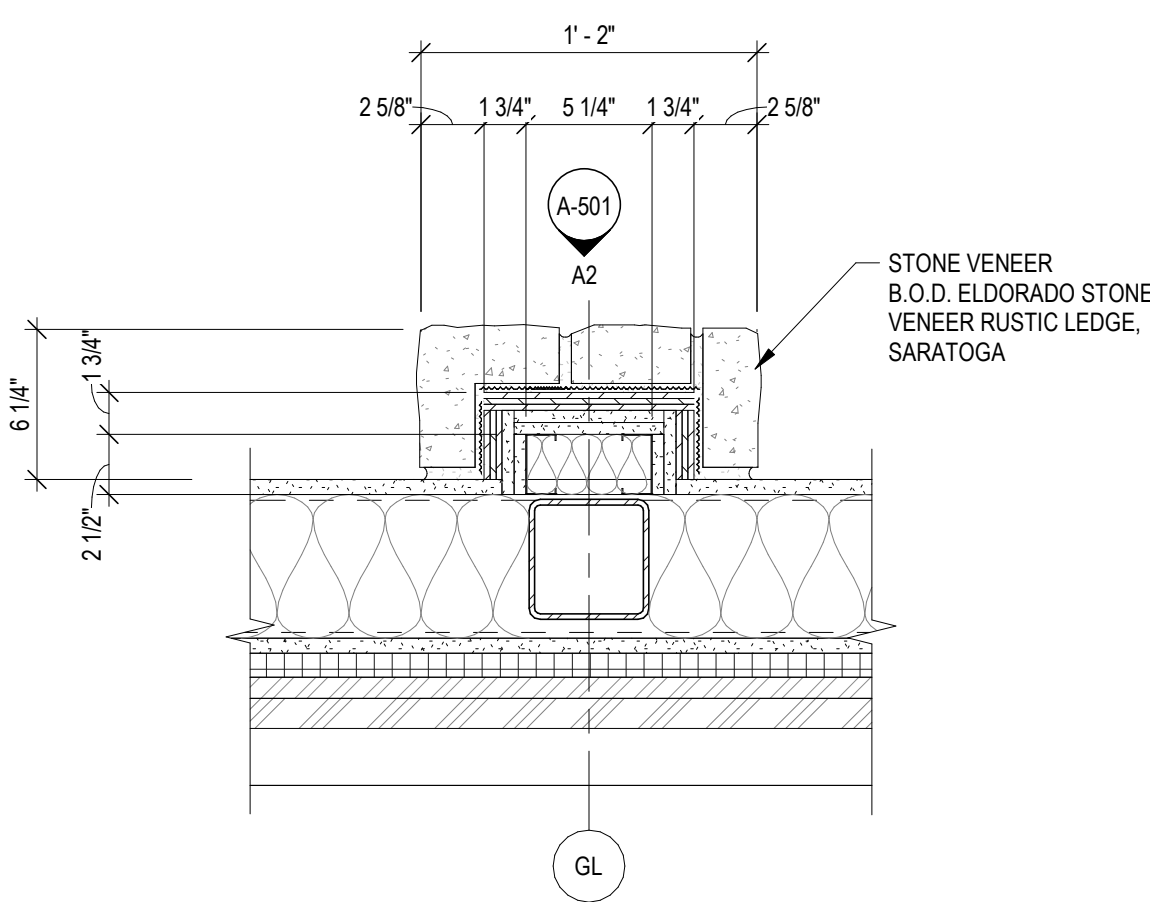
A-501



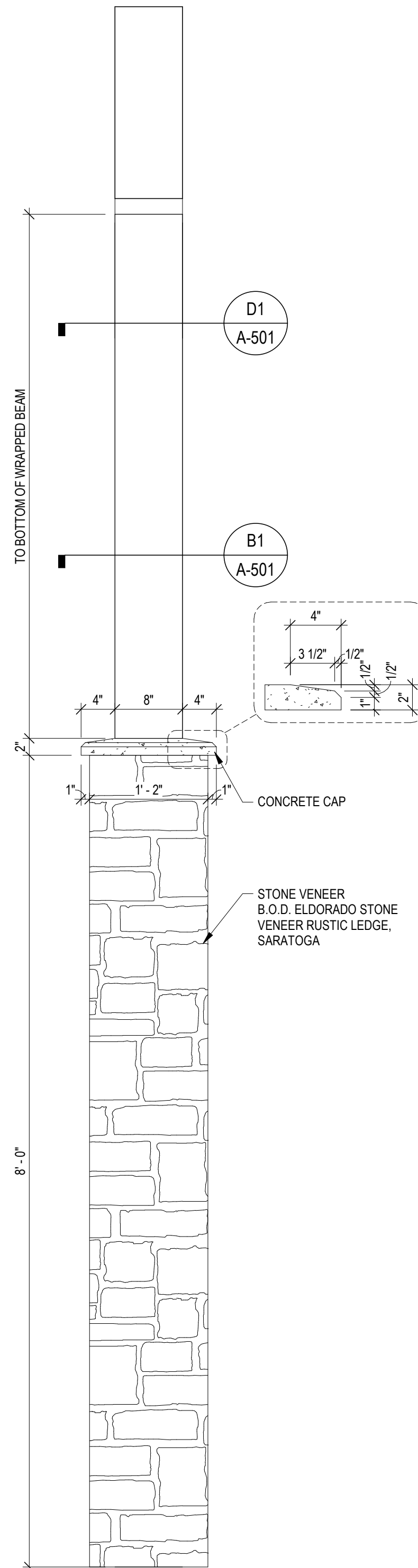
D1 INTERIOR COLUMN PLAN DETAIL - TOP
 1 1/2" = 1'-0"



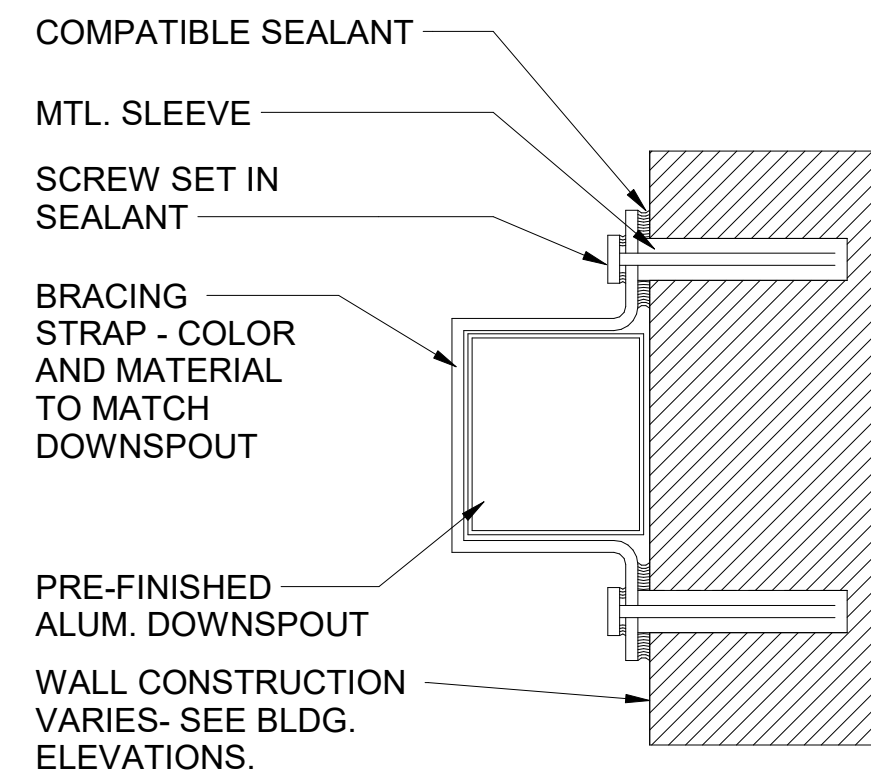
B1 INTERIOR COLUMN PLAN DETAIL - CAP
 1 1/2" = 1'-0"



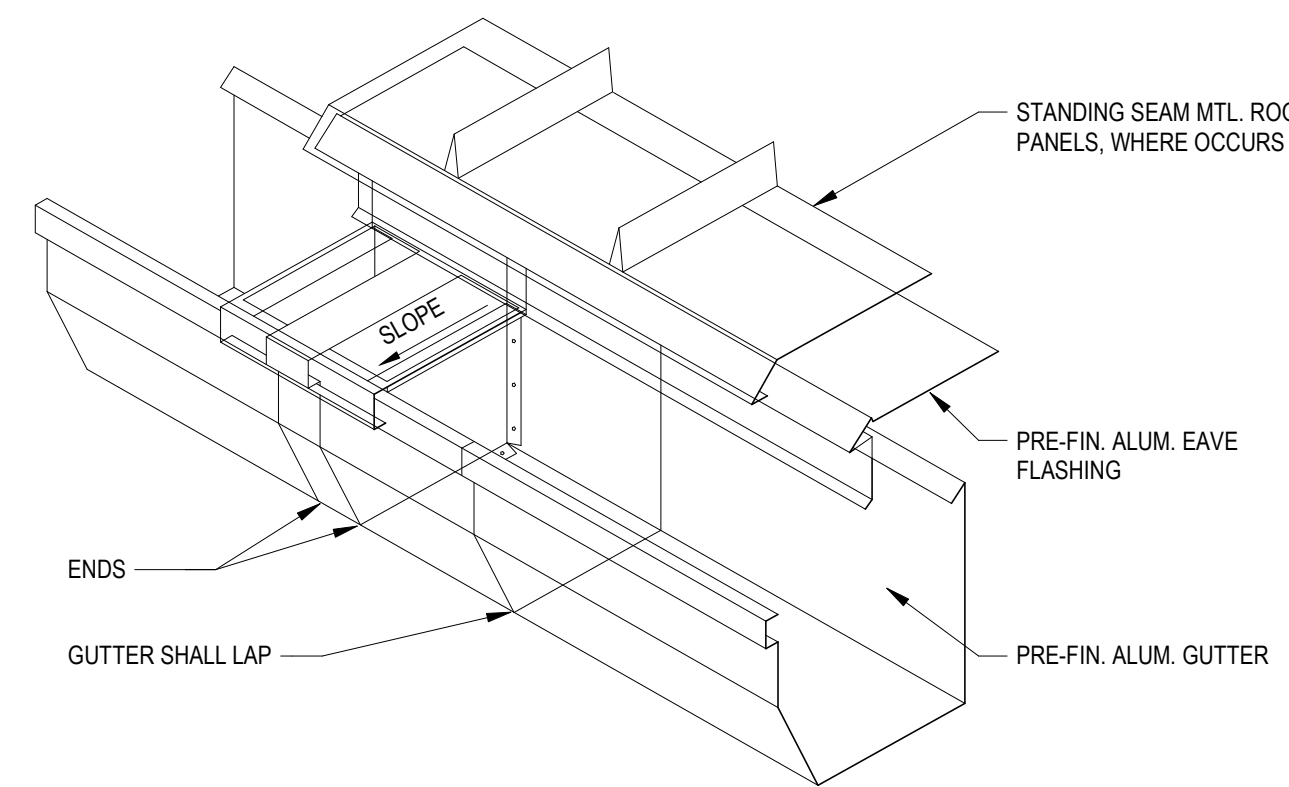
A1 INTERIOR COLUMN PLAN DETAIL - BASE
 1 1/2" = 1'-0"



A2 INTERIOR COLUMN ELEVATION
 1" = 1'-0"

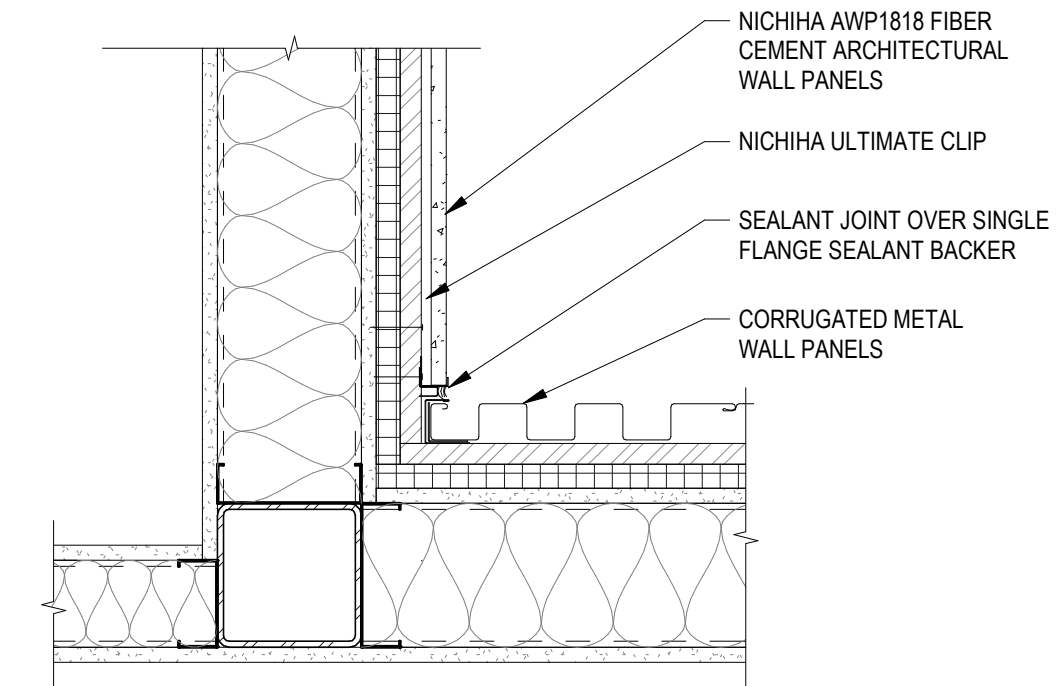


D4 TYP. DOWNSPOUT BRACING
 1 1/2" = 1'-0"

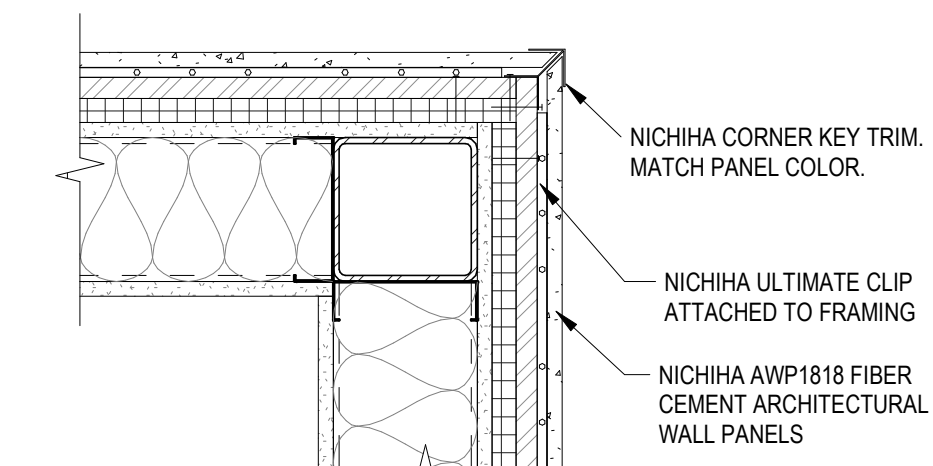


C4 TYP. GUTTER EXPANSION DETAIL
 1 1/2" = 1'-0"

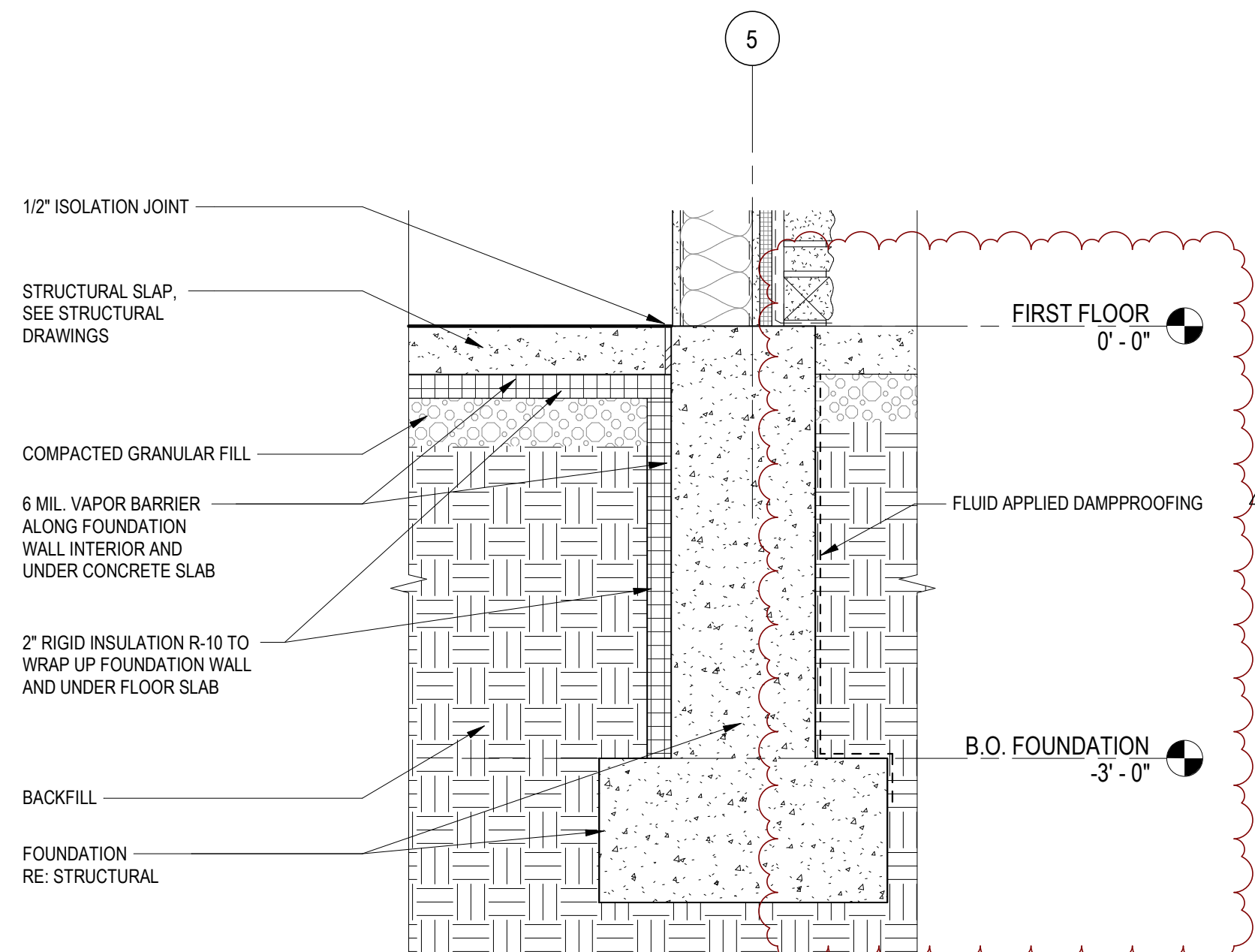
- NOTE:
1. PROVIDE EXPANSION JOINT SPACING @ GUTTER PER SMACNA GUIDELINES.
 2. GUTTER & FLASHING BY MTL. BLDG.MFR. - EXACT DETAILS & INSTALLATION PER MFR. RECOMMENDATIONS.



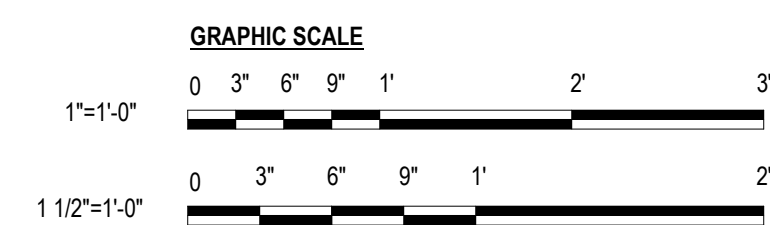
B6 FIBER CEMENT TO METAL PANEL INT. CORNER PLAN DETAIL
 1 1/2" = 1'-0"



A6 FIBER CEMENT PANEL CORNER PLAN DETAIL
 1 1/2" = 1'-0"



A4 FOUNDATION WALL DETAIL
 1" = 1'-0"

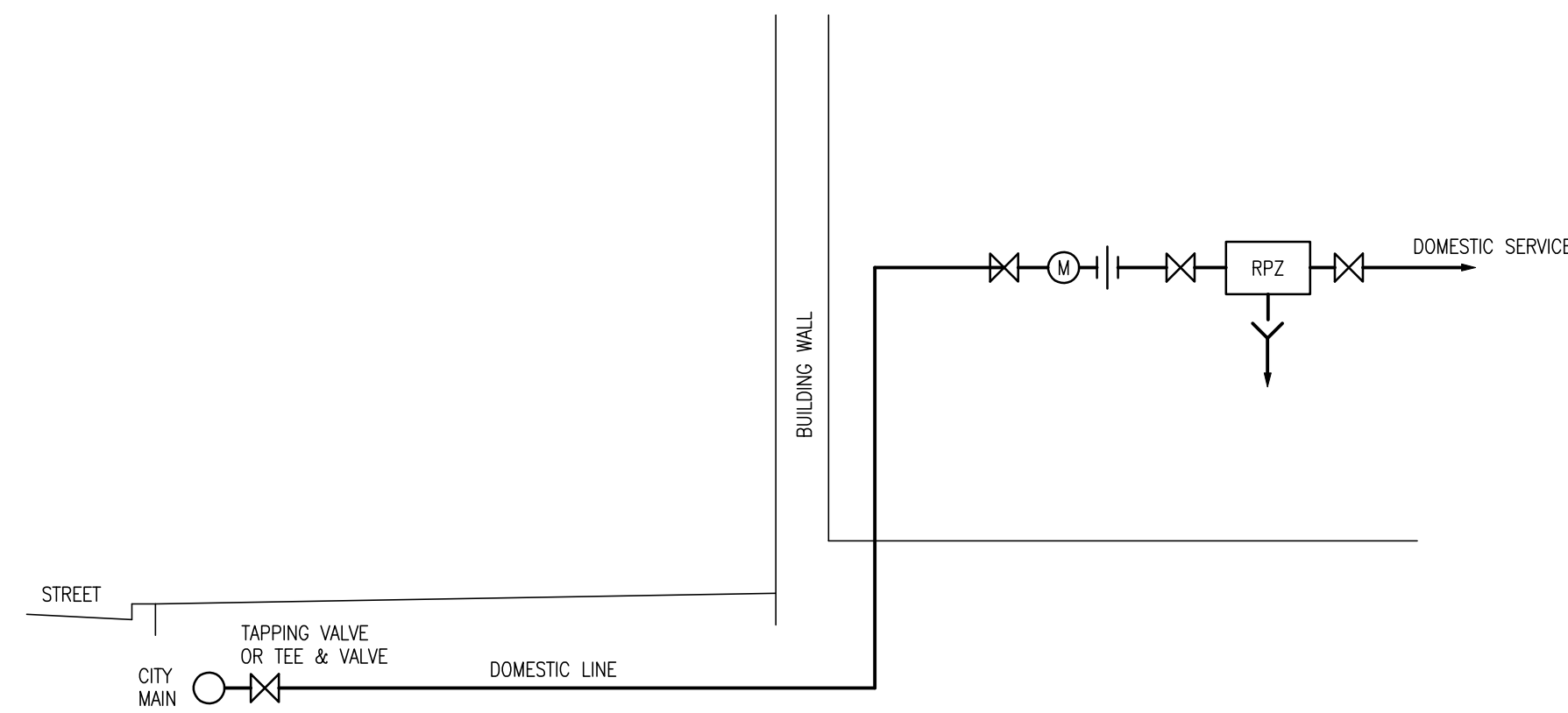


MECHANICAL SYMBOL SCHEDULE

WST	WASTE PIPING
V	VENT PIPING
VW	VENT PIPING OVER WASTE PIPING
CW	COLD WATER PIPING
HW	HOT WATER PIPING
G	GAS PIPING
ELL	PIPE FITTINGS (ELL. DOWN - TEE DOWN - TEE UP)
VALVE	CHECK VALVE
UNION	STRAINER
GAS COCK	BALANCING COCK
A200 12x12	AIR TERMINAL TAG. "A" INDICATES MARK ON GRILLE AND REGISTER SCHEDULE. "200" INDICATES AIR VOLUME IN CFM. "12x12" INDICATES FACE SIZE.
REGISTER	AIR TERMINALS (REGISTER - GRILLE)
FIRE DAMPER	FIRE DAMPER
SMOKE DAMPER	SMOKE DAMPER
MANUAL DAMPER	MANUAL DAMPER
MOTORIZED DAMPER	MOTORIZED DAMPER
THERMOSTAT	THERMOSTAT - HUMIDISTAT (ZONE SUBSCRIPT)
WST	WASTE - VENT
CO	CLEAN OUT - VENT THROUGH ROOF
SA	SUPPLY AIR - RETURN AIR
FA	FRESH AIR - EXHAUST AIR
N/E	NEW CONNECTS TO EXISTING - EXISTING TO REMAIN
SPRINKLER HEAD	PENDANT MOUNTED SPRINKLER HEAD
SPRINKLER HEAD	UPRIGHT MOUNTED SPRINKLER HEAD
SPRINKLER HEAD	PENDANT HEAD BELOW / UPRIGHT HEAD ABOVE
SPRINKLER HEAD	SIDEWALL SPRINKLER HEAD
SPRINKLER HEAD	EXTENDED COVERAGE SIDEWALL SPRINKLER HEAD

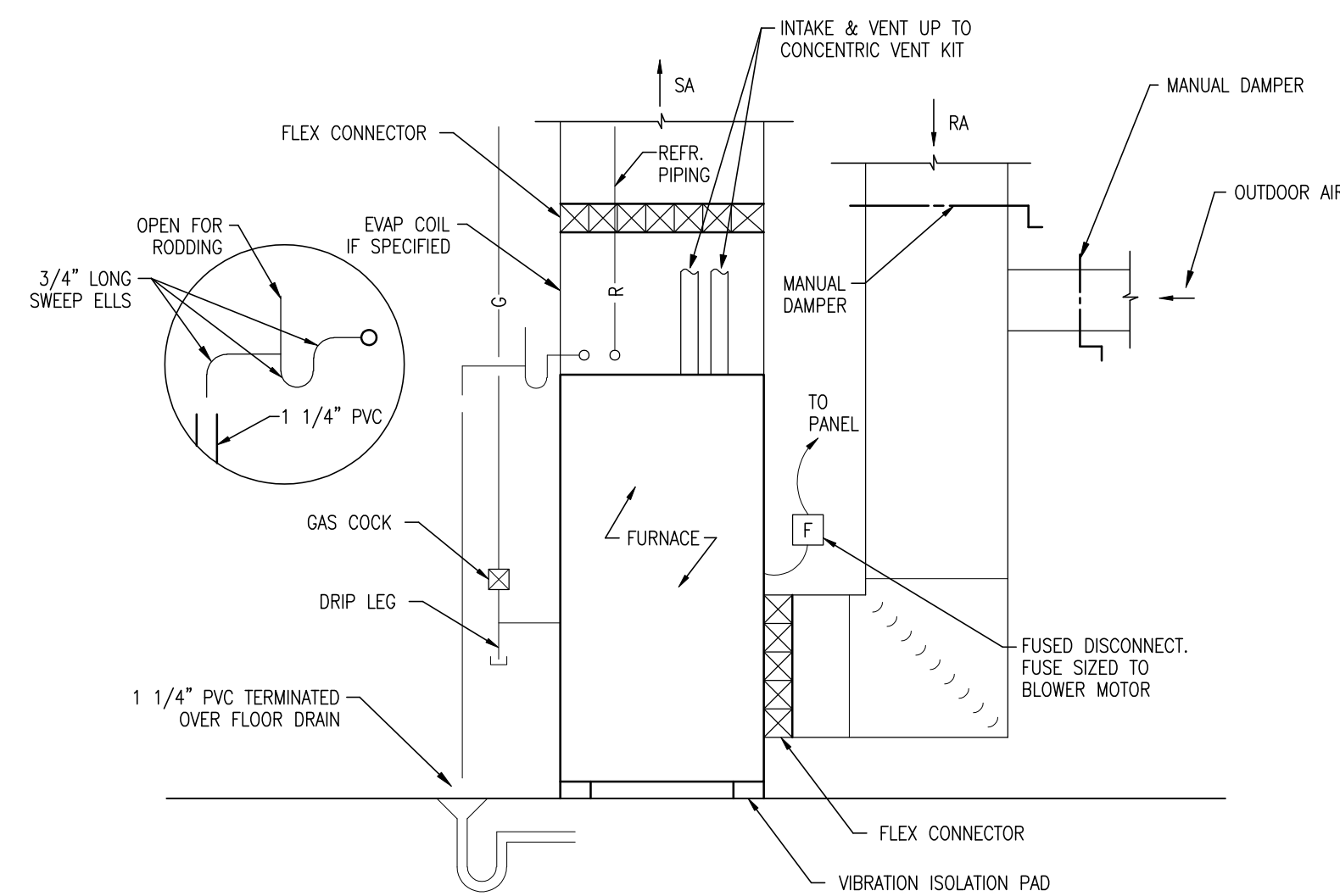
ELECTRICAL SYMBOL SCHEDULE

P2-22,24	HOME RUN CIRCUIT TO PANEL P2, CIRCUITS 22,24
	EACH ARROW INDICATES ONE CIRCUIT
	SHORT HATCH MARKS INDICATE # OF PHASE CONDUCTORS
	LONG HATCH MARKS INDICATE # OF NEUTRAL CONDUCTORS
	NO HATCH MARK INDICATES TWO CONDUCTORS
E	ELECTRICAL SERVICE OR FEEDER WIRING
	WIRING IN WALL OR CEILING - WIRING IN FLOOR
RECEPTACLE	RECEPTACLE OUTLET (DUPLX - QUADRUPLX - SPECIAL POWER)
COMMUNICATIONS	COMMUNICATIONS OUTLET (TELEPHONE - CATV - DATA/PHONE)
3 0 4 P S K T OS	WALL SWITCH (3-WAY - DIMMER - 4-WAY - PILOT - SPEED - KEYED - TIMER - OCCUPANCY)
LED STYLE LIGHT	LED STYLE LIGHT FIXTURE (CEILING MOUNTED - WALL MOUNTED)
LED STYLE LIGHT	LED STYLE LIGHT FIXTURE (ENCLOSED - STRIP) (S INDICATES SPLIT WIRED)
EXIT LIGHT	EXIT LIGHT - EMERGENCY LIGHT - EMERGENCY/EXIT LIGHT
OTHER RECEPTACLE	OTHER RECEPTACLE OUTLET (CLOCK - FLOOR - SPLIT WIRED)
	ELECTRIC PANEL
SPEAKER	SPEAKER - PUSH TO TALK
JUNCTION BOX	JUNCTION BOX - PULL BOX
DISCONNECT	DISCONNECT (FUSED - NONFUSED)
STARTER	STARTER - CONTACTOR
5-208-3	ELECTRIC MOTOR (5 HP - 208V - 3 PHASE)
THERMOSTAT	THERMOSTAT - HUMIDISTAT (ZONE SUBSCRIPT)
42 G W U	OUTLET MODIFIERS (MOUNT HEIGHT INCHES - GFI PROTECTED - WEATHER PROOF GFI - USB)
SMOKE DETECTOR	SMOKE DETECTOR - HEAT DETECTOR - DUCT DETECTOR - MANUAL PULL STATION
AUDIO VISUAL	AUDIO VISUAL - VISUAL
MAGNETIC DOOR HOLDER	MAGNETIC DOOR HOLDER - INTERLOCK RELAY
END OF LINE RESISTOR	END OF LINE RESISTOR
FIRE ALARM CONTROL PANEL	FIRE ALARM CONTROL PANEL
DIALER	DIALER



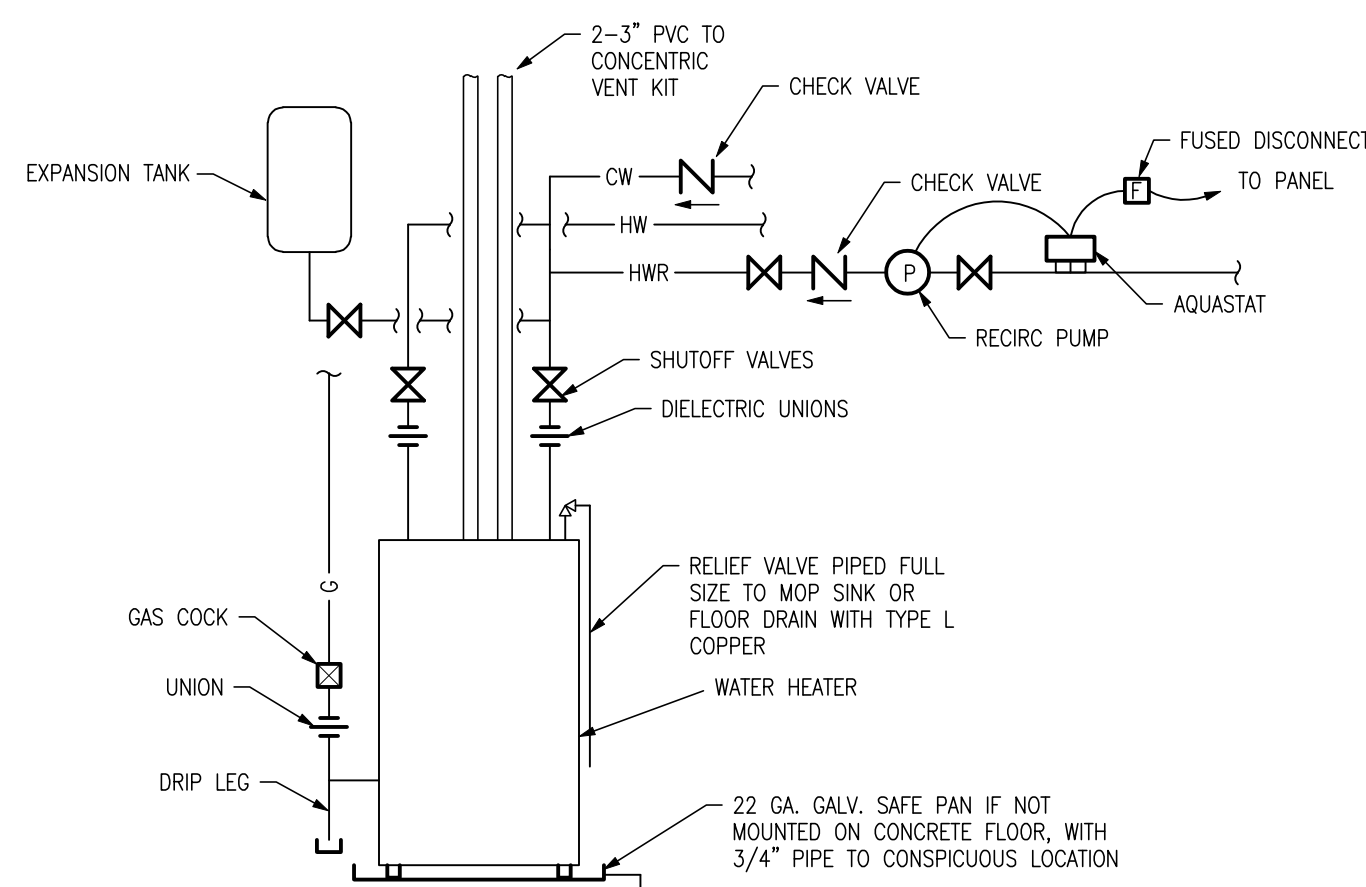
1 BACKFLOW ASSEMBLY

ME-001 NO SCALE



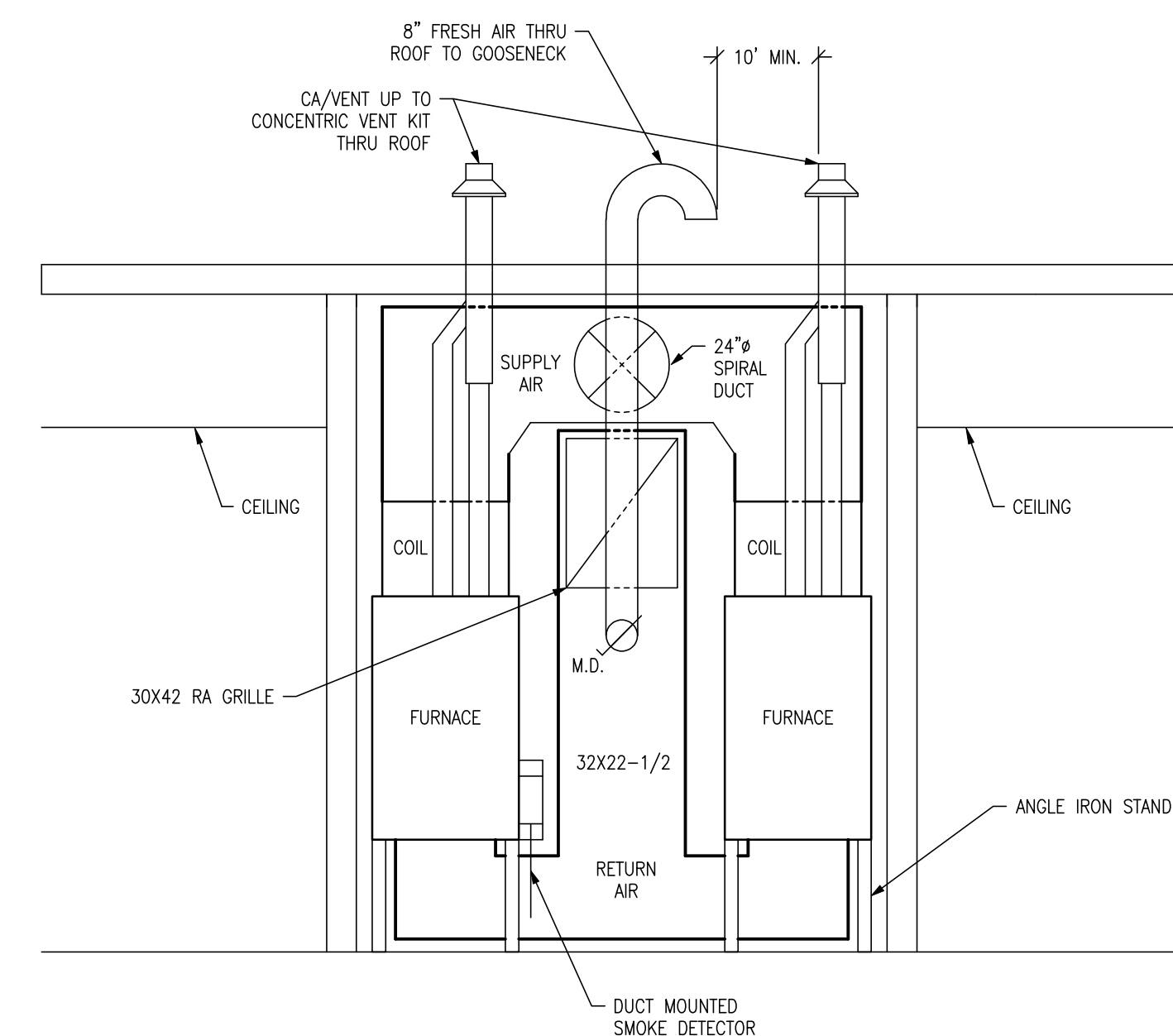
2 FURNACE DETAIL

ME-001 NO SCALE



3 GAS WATER HEATER PIPING

ME-001 NO SCALE

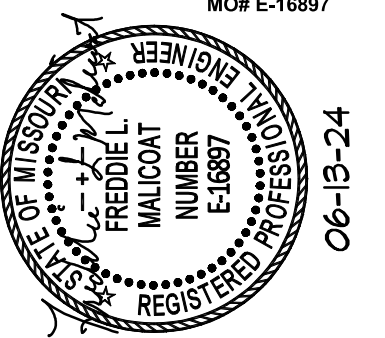


4 FURNACE SECTION DETAIL

ME1 NO SCALE

WOOLPERT
ARCHITECTURE | ENGINEERING | GEOSPATIAL
720 SOUTH COLORADO BLVD.
SUITE 1200-S
GLENDALE, CO 80246
937.461.0743

FREDDIE L. MALICOAT - ENGINEER
MO# E-16897



ISSUED FOR BID
NOT FOR
CONSTRUCTION

ISSUANCE SCHEDULE

NUMBER DATE DESCRIPTION
#2 06-13-24 BID ADD #2



KIRKSVILLE REGIONAL AIRPORT
TERMINAL BUILDING

27161 DAVID HALL TRAIL
KIRKSVILLE, MO. 63501

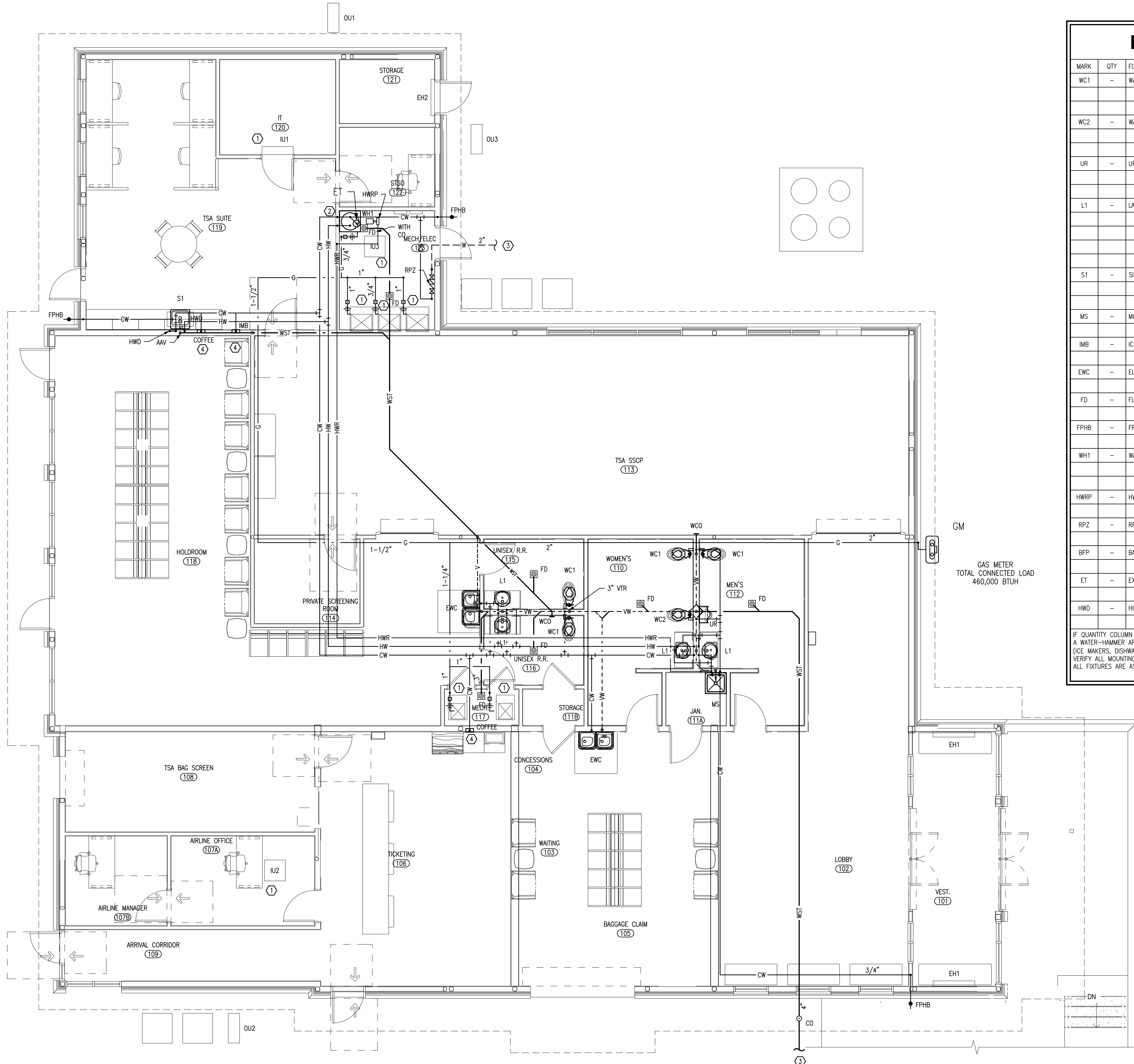
PROJECT NO: MODOT 24-028A-1
DATE ISSUED: 05-30-24

DESIGNED BY: FLM
DRAWN BY: JDB
CHECKED BY: FLM

SHEET NAME:
A SCHEDULES &
SPECS

SHEET NO:

ME-001



PLUMBING FIXTURE SCHEDULE

MARK	QTY	FIXTURE	MODEL NUMBER
WC1	-	WATER CLOSET	AMERICAN STANDARD 3451.001.020, WHITE VITREOUS CHINA, 15" HEIGHT, ELONGATED BOWL, ZURN Z6000AV-WS1-YB-YC FLUSH VALVE, AMERICAN STANDARD 5901.110 WHITE SEAT.
WC2	-	WATER CLOSET	AMERICAN STANDARD 3461.001.020, WHITE VITREOUS CHINA, 16 1/2" HEIGHT, ELONGATED BOWL, ZURN Z6000AV-WS1-TB-YC FLUSH VALVE, AMERICAN STANDARD 5901.110 WHITE SEAT, ADA HEIGHT.
UR	-	URINAL	AMERICAN STANDARD 6550.005.020, WHITE VITREOUS CHINA, 3/4" TOP SPUD, ZURN Z6003AV-WS1-YB-YC FLUSH VALVE.
L1	-	LAVATORY	AMERICAN STANDARD 0476.028.020, WHITE VITREOUS CHINA, SELF-RIMMING, MOEN CAB301 FAUCET, AUTOMATIC ELECTRONIC MOTION SENSE FAUCET POWERED VIA 4 AA BATTERIES, DEARBORN BRASS 760-1 GRID DRAIN, P-TRAP, SPEEDWAY 1920A SUPPLIES AND STOPS FOR EXPOSED PIPING WITH TRUEBRO INSULATION KIT, MOUNT PER ADA.
S1	-	SINK	ELKAY LR-2522, 18GA STAINLESS STEEL, LK-35 STRAINER, LK2423C FAUCET W/SPRAY, SPEEDWAY CR1920A SUPPLIES AND STOPS.
MS	-	MOP SINK	SWAN MS 2424-3, MS-2412 FAUCET, MS-2405 HOSE, MS-2408 RIM GUARD, STRAINER.
IMB	-	ICE MAKER BOX	GUY GRAY BIM875 ICE MAKER CONNECTION BOX.
EWC	-	ELEC WATER COOLER	ELKAY EZSTL8WSLK DOUBLE COOLER, W/ BOTTLE FILLERS.
FD	-	FLOOR DRAIN	JOSAM 30003-6A, NICKALOY TOP, WITH P-TRAP, TRAP SEAL, AND CLEAN OUT.
FPHB	-	FRZ PROOF HOSE BIB	WOODFORD MODEL 67 SERIES POLISHED CHROME WALL FAUCET WITH TEE KEY, VACUUM BREAKER.
WH1	-	WATER HEATER	A.O. SMITH GPDL-40, 40 GALLON NATURAL GAS, 40,000 BTUH INPUT, INSTALLED WITH 3" CONCENTRIC VENT KIT 100111100. (59"x 30"W) (5A, 120V SIMPLEX RECEPTACLE, 600W)
HWRP	-	HW RETURN PUMP	TACO MODEL 003 CARTRIDGE CIRCULATOR PUMP, 1/40 HP, 0.43A, 120V, 1#, 3 GPM @ 3'.
RPZ	-	RPZ BACKFLOW PREV	WATTS LF9090T SERIES - REDUCED PRESSURE ZONE ASSEMBLY
BFP	-	BACKFLOW PREV	WATTS LF9D ICE MACHINE/BEVERAGE BACKFLOW PREVENTION DEVICE.
ET	-	EXPANSION TANK	AMTRLO AST-12
HWD	-	HOT WATER DISP.	IN-SINK-ERATOR HOT 100C - HOT WATER DISPENSER

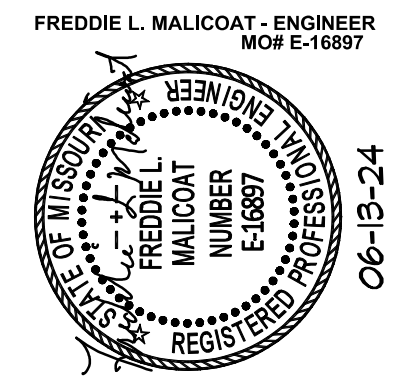
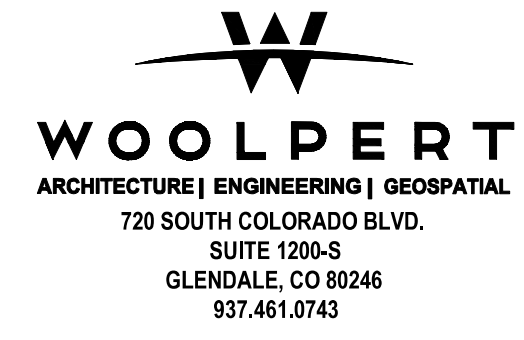
IF QUANTITY COLUMN IS LEFT BLANK REFER TO PLANS. VERIFY WITH PLANS ALL QUANTITIES OF FIXTURES. A WATER-HAMMER ARRESTOR SHALL BE INSTALLED WHERE QUICK-CLOSING VALVES ARE UTILIZED (ICE MAKERS, DISHWASHERS, AND WASHING MACHINES). VERIFY ALL MOUNTING HEIGHTS WITH ARCHITECTURAL PLANS. ALL FIXTURES ARE AS APPROVED EQUAL BY SUBMITTAL.

GENERAL NOTES:

- VERIFY PLUMBING, HVAC, POWER, AND LIGHTING REQUIREMENTS FOR OWNER'S SPECIFIC EQUIPMENT PRIOR TO ROUGH-IN.
- COORDINATE INSTALLATION OF EQUIPMENT WITH MANUFACTURERS' INSTALLATION INSTRUCTIONS PRIOR TO ROUGH-IN.
- CONTRACTOR SHALL MAINTAIN FIRE RATING OF ANY PENETRATION AND SHALL SEAL ANY PENETRATION IN A FLOOR, CEILING, OR EXTERIOR WALL.
- VERIFY RECEPTACLE MOUNTING HEIGHTS AND LOCATIONS WITH OWNER AND ARCHITECTURAL ELEVATIONS PRIOR TO ROUGH-IN.
- PLUMBING SUPPLY RISER SHOWN FOR CLARITY, THE PIPING SYSTEM SHALL BE ROUTED ENTIRELY WITHIN THE CONDITIONED SPACES, WITHIN INTERIOR CONDITION WALLS WERE ABLE. WHERE ROUTED BELOW SLAB, SLEEVED IN SCH 40 PVC.

KEYED NOTES:

- PIPE 3/4" SCH 40 PVC CONDENSATE TO MOP SINK, STAND PIPE, OR NEAREST DRAIN. 1-1/4" IF CONNECTING MULTIPLE DRAINS.
- PIPE WATER HEATER RELIEF AND DRAIN TO MOP SINK OR NEAREST FLOOR DRAIN.
- SEE CIVIL FOR CONTINUATION.
- INSTALL BACKFLOW PREVENTION DEVICE, BFP, ON ICE MACHINE AND SODA/COFFEE/TEA MACHINE COLD WATER LINES.



**ISSUED FOR BID
NOT FOR
CONSTRUCTION**

ISSUANCE NUMBER	SCHEDULE DATE	DESCRIPTION
06-13-24	06-13-24	BID ADD #2



**KIRKSVILLE REGIONAL AIRPORT
TERMINAL BUILDING**

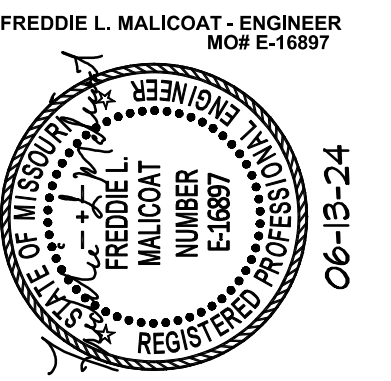
27161 DAVID HALL TRAIL
KIRKSVILLE, MO. 63501

PROJECT NO: MODOT 24-028A-1
DATE ISSUED: 05-30-24
DESIGNED BY: FLM
DRAWN BY: JDB
CHECKED BY: FLM

SHEET NAME:
**PLUMBING
PLAN**

SHEET NO:
P-101

1 PLUMBING PLAN
SCALE: 3/16" = 1'-0"



ISSUED FOR BID
NOT FOR
CONSTRUCTION

ISSUANCE SCHEDULE NUMBER	DATE	DESCRIPTION
1	06-13-24	BID ADD #2



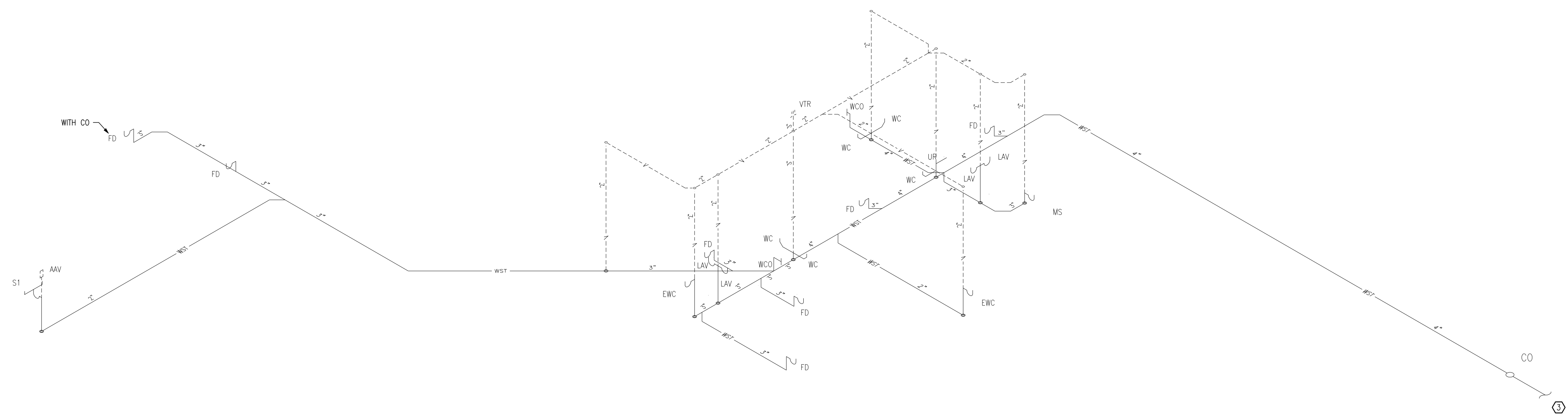
KIRKSVILLE REGIONAL AIRPORT
TERMINAL BUILDING

27161 DAVID HALL TRAIL
 KIRKSVILLE, MO, 63501

PROJECT NO: MODOT 24-028A-1
 DATE ISSUED: 05-30-24
 DESIGNED BY: FLM
 DRAWN BY: JDB
 CHECKED BY: FLM

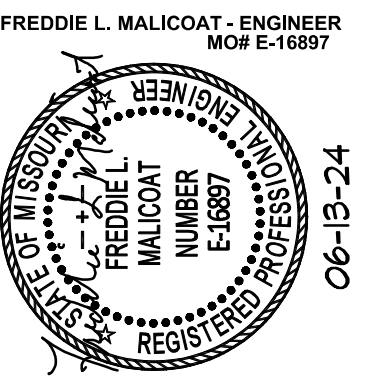
SHEET NAME:
WASTE RISER DIAGRAM

SHEET NO:
P-601



1 WASTE RISER DIAGRAM
 P-601 SCALE: NO SCALE

- GENERAL NOTES:**
1. VERIFY PLUMBING, HVAC, POWER, AND LIGHTING REQUIREMENTS FOR OWNER'S SPECIFIC EQUIPMENT PRIOR TO ROUGH-IN.
 2. COORDINATE INSTALLATION OF EQUIPMENT WITH MANUFACTURERS' INSTALLATION INSTRUCTIONS PRIOR TO ROUGH-IN.
 3. CONTRACTOR SHALL MAINTAIN FIRE RATING OF ANY PENETRATION AND SHALL SEAL ANY PENETRATION IN A FLOOR, CEILING, OR EXTERIOR WALL.
 4. VERIFY RECEPTACLE MOUNTING HEIGHTS AND LOCATIONS WITH OWNER AND ARCHITECTURAL ELEVATIONS PRIOR TO ROUGH-IN.
 5. PLUMBING SUPPLY RISER SHOWN FOR CLARITY, THE PIPING SYSTEM SHALL BE ROUTED ENTIRELY WITHIN THE CONDITIONED SPACES, WITHIN INTERIOR CONDITION WALLS WHERE APPLICABLE. WHERE ROUTED BELOW SLAB, SLEEVED IN SCH 40 PVC.
- KEYED NOTES:**
- ① PIPE 3/4" SCH 40 PVC CONDENSATE TO MOP SINK, STAND PIPE, OR NEAREST DRAIN. 1-1/4" IF CONNECTING MULTIPLE DRAINS.
 - ② PIPE WATER HEATER RELIEF AND DRAIN TO MOP SINK OR NEAREST FLOOR DRAIN.
 - ③ SEE CIVIL FOR CONTINUATION.
 - ④ INSTALL BACKFLOW PREVENTION DEVICE, BFP, ON ICE MACHINE AND SODA/COFFEE/TEA MACHINE COLD WATER LINES.



**ISSUED FOR BID
 NOT FOR
 CONSTRUCTION**

ISSUANCE NUMBER	SCHEDULE DATE	DESCRIPTION
▲	06-13-24	BID ADD #2



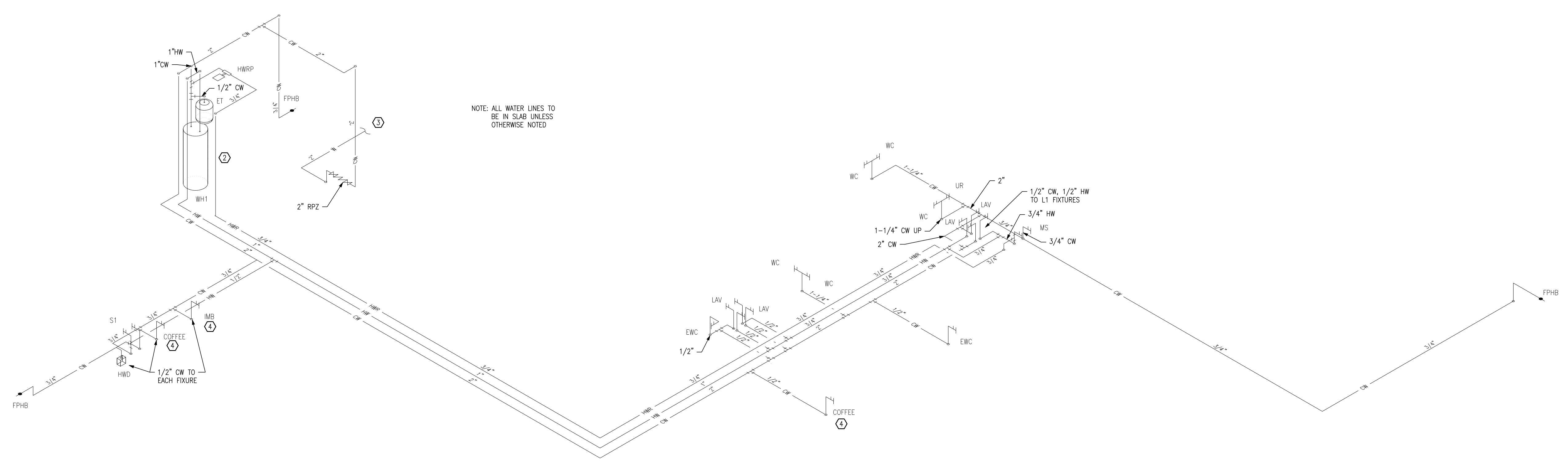
**KIRKSVILLE REGIONAL AIRPORT
 TERMINAL BUILDING**

27161 DAVID HALL TRAIL
 KIRKSVILLE, MO. 63501

PROJECT NO: MODOT 24-028A-1
 DATE ISSUED: 05-30-24
 DESIGNED BY: FLM
 DRAWN BY: JDB
 CHECKED BY: FLM

SHEET NAME:
**SUPPLY
 RISER
 DIAGRAM**

SHEET NO:
P-602



NOTE: ALL WATER LINES TO BE IN SLAB UNLESS OTHERWISE NOTED

1 SUPPLY RISER DIAGRAM
 P-602 SCALE: NO SCALE

- GENERAL NOTES:**
1. VERIFY PLUMBING, HVAC, POWER, AND LIGHTING REQUIREMENTS FOR OWNER'S SPECIFIC EQUIPMENT PRIOR TO ROUGH-IN.
 2. COORDINATE INSTALLATION OF EQUIPMENT WITH MANUFACTURERS' INSTALLATION INSTRUCTIONS PRIOR TO ROUGH-IN.
 3. CONTRACTOR SHALL MAINTAIN FIRE RATING OF ANY PENETRATION AND SHALL SEAL ANY PENETRATION IN A FLOOR, CEILING, OR EXTERIOR WALL.
 4. VERIFY RECEPTACLE MOUNTING HEIGHTS AND LOCATIONS WITH OWNER AND ARCHITECTURAL ELEVATIONS PRIOR TO ROUGH-IN.
 5. PLUMBING SUPPLY RISER SHOWN FOR CLARITY, THE PIPING SYSTEM SHALL BE ROUTED ENTIRELY WITHIN THE CONDITIONED SPACES, WITHIN INTERIOR CONDITION WALLS WHERE APPLICABLE. WHERE ROUTED BELOW SLAB, SLEEVED IN SCH 40 PVC.
- KEYED NOTES:**
- ① PIPE 3/4" SCH 40 PVC CONDENSATE TO MOP SINK, STAND PIPE, OR NEAREST DRAIN. 1-1/4" IF CONNECTING MULTIPLE DRAINS.
 - ② PIPE WATER HEATER RELIEF AND DRAIN TO MOP SINK OR NEAREST FLOOR DRAIN.
 - ③ SEE CIVIL FOR CONTINUATION.
 - ④ INSTALL BACKFLOW PREVENTION DEVICE, BFP, ON ICE MACHINE AND SODA/COFFEE/TEA MACHINE COLD WATER LINES.

GRILLE AND REGISTER SCHEDULE

MARK	MFG / MODEL	DAMPER	COLOR	DESCRIPTION
A	PRICE / APDF	YES	WHITE	24"x24" LAYIN ALL ALUMINUM PERFORATED SUPPLY REGISTER WITH ADJUSTABLE AIR PATTERN.
B	PRICE / APDDR	NO	WHITE	24"x24" LAYIN ALL ALUMINUM PERFORATED RETURN AIR GRILLE.
C	PRICE / 6200	YES	WHITE	WALL MOUNT ALL ALUMINUM DOUBLE DEFLECTION SUPPLY REGISTER.
D	PRICE / 620	NO	WHITE	WALL MOUNT ALL ALUMINUM RETURN AIR GRILLE.
E	PRICE / AMCD	YES	WHITE	SURFACE MOUNT ALL ALUMINUM MODULAR CORE LOWERED FACE DIFFUSER. 4-WAY BLOW PATTERN.
F	PRICE / 80	NO	WHITE	SURFACE MOUNT ALL ALUMINUM EGGRATE RETURN AIR GRILLE.
G	PRICE / SDGE	YES	WHITE	SPIRAL DUCT REGISTER, DOUBLE DEFLECTION CORE.
H	PRICE / 96	NO	WHITE	HEAVY DUTY STEEL RETURN AIR GRILLE WITH 40 DEGREE DEFLECTION.

NOTE: ALL GRILLES, REGISTERS, AND DIFFUSERS TO BE ALL ALUMINUM UNLESS NOTED OTHERWISE. STEEL CAN BE USED IF POWDER COATED PAINT IS APPLIED. QUANTITIES, SIZES, FRAMES AND ACCESSORIES TO BE CONFIRMED BY CONTRACTOR.

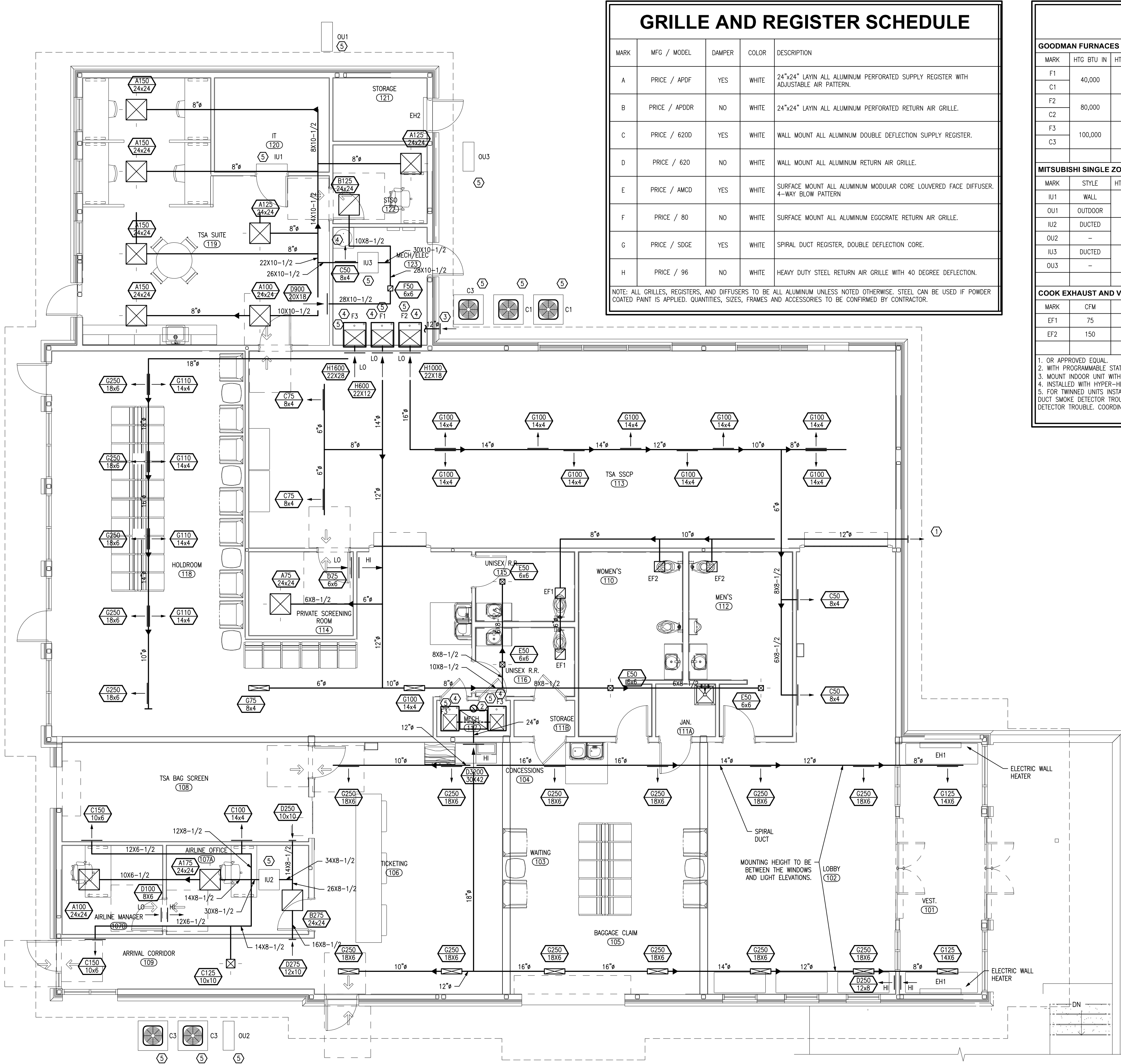
HVAC EQUIPMENT SCHEDULE

GOODMAN FURNACES / CONDENSING UNITS											
MARK	HTG BTU IN	HTG BTU OUT	TOTAL CLG	SENS CLG	CFM @ 0.5"	O.A. CFM	V / ϕ	FLA	MOCP	MODEL	REMARKS
F1	40,000	36,000	18,000	13,500	600	120	120 / 1	7.8	20	GMVC9604038NA	1,2
C1							208 / 1	7.4	20	GSX140181L	1,2
F2	80,000	72,000	30,000	22,500	1,000	200	120 / 1	7.8	20	GMVC9608038NA	1,2
C2							208 / 1	13.8	30	GSX140301K	1,2
F3	100,000	90,000	48,000	36,000	1,600	320	120 / 1	14.4	20	GMVC961005CNA	1,2,5
C3							208 / 1	21.5	50	GSX140481K	1,2

MITSUBISHI SINGLE ZONE MINI SPLIT SYSTEM											
MARK	STYLE	HTG BTU OUT	TOTAL CLG	SENS CLG	CFM @ 0.5"	O.A. CFM	V / ϕ	FLA	MOCP	MODEL	REMARKS
IU1	WALL										
OU1	OUTDOOR	9,600	9,000	6,750	300	60	208 / 1	0.75	20	MSZ-GS09NA	1,2,3
IU2	DUCTED										
OU2		15,000	12,000	9,000	-	-	208 / 1	0.72	30	SEZ-KD12NA4	1,2
IU3	DUCTED										
OU3		21,600	18,000	13,500	-	-	208 / 1	0.9	30	SEZ-KD18NA4	1,2

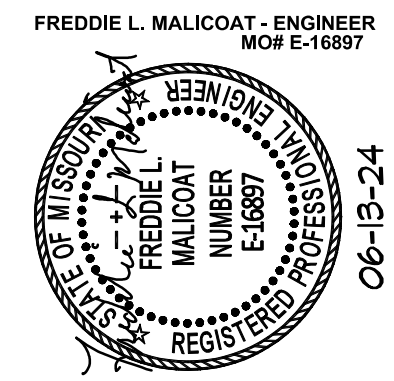
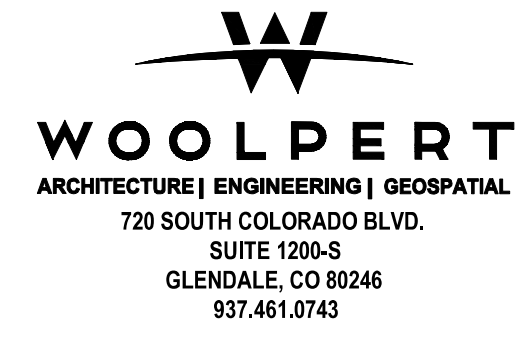
COOK EXHAUST AND VENTILATION FANS											
MARK	CFM	ESP	DRIVE	RPM	SONES	HP	V / ϕ	WATTS	MOCP	MODEL	REMARKS
EF1	75	0.125"	DIRECT	750	0.9	-	120 / 1	30	20	GC-128	1
EF2	150	0.125"	DIRECT	1,100	3.0	-	120 / 1	50	20	GC-166	1

1. OR APPROVED EQUAL.
 2. WITH PROGRAMMABLE STAT, LO AMBIENT KIT FOR 0° OPERATION.
 3. MOUNT INDOOR UNIT WITH TOP AT 7'-0" AFF.
 4. INSTALLED WITH HYPER-HEATING FOR 100% HEATING CAPACITY AT 5°F AND 88% HEATING CAPACITY AT -13°F.
 5. FOR TWINNED UNITS INSTALL DUCT SMOKE DETECTOR. ACTUATION OF A SMOKE DETECTOR SHALL ACTIVATE A VISIBLE AND AUDIBLE SIGNAL IN AN APPROVED LOCATION. DUCT SMOKE DETECTOR TROUBLE CONDITIONS SHALL ACTIVATE A VISIBLE OR AUDIBLE SIGNAL IN AN APPROVED LOCATION AND SHALL BE IDENTIFIED AS AIR DUCT DETECTOR TROUBLE. COORDINATE LOCATION WITH AUTHORITY HAVING JURISDICTION.



- #### GENERAL NOTES:
- VERIFY PLUMBING, HVAC, POWER, AND LIGHTING REQUIREMENTS FOR OWNER'S SPECIFIC EQUIPMENT PRIOR TO ROUGH-IN.
 - COORDINATE INSTALLATION OF EQUIPMENT WITH MANUFACTURERS' INSTALLATION INSTRUCTIONS PRIOR TO ROUGH-IN.
 - CONTRACTOR SHALL MAINTAIN FIRE RATING OF ANY PENETRATION AND SHALL SEAL ANY PENETRATION IN A FLOOR, CEILING, OR EXTERIOR WALL.
 - VERIFY RECEPTACLE MOUNTING HEIGHTS AND LOCATIONS WITH OWNER AND ARCHITECTURAL ELEVATIONS PRIOR TO ROUGH-IN.
 - THERMOSTATS SHALL BE MOUNTED AT 60" (42" ADA) TO CENTER ABOVE FINISHED FLOOR.
- #### KEYED NOTES:
- 12X12 EXHAUST WALLCAP WITH BIRDSCREEN, MAINTAIN 10' MINIMUM CLEARANCE FROM FRESH AIR OPENINGS.
 - 10" FRESH AIR DUCT WITH MANUAL DAMPER SET TO 200CFM UP TO GOOSENECK/ROOF JACK WITH BIRDSCREEN ON ROOF.
 - 12X12 FRESH AIR LOUVER WITH 8" FRESH AIR DUCT WITH MANUAL DAMPER SET TO 100CFM TO FURNACE F1, 8" FRESH AIR DUCT WITH MANUAL DAMPER SET TO 125CFM TO FURNACE F2, AND 10" FRESH AIR DUCT WITH MANUAL DAMPER SET TO 175CFM TO FURNACE F3.
 - WATER HEATER/FURNACE COMBUSTION AIR AND VENT TO CONCENTRIC VENT KIT THRU WALL/ROOF, MAINTAIN 10' MINIMUM CLEARANCE FROM FRESH AIR OPENINGS. INSTALL STAINLESS STEEL DRIP GUARD WHEN THRU BRICK WALL.
 - REFRIGERANT PIPING TO/FROM INDOOR/OUTDOOR UNITS. PAINT EXTERIOR REFRIGERANT PIPING WITH UV RESISTANT PAINT.

1 HVAC PLAN
 M-101 SCALE: 3/16" = 1'-0"



**ISSUED FOR BID
 NOT FOR
 CONSTRUCTION**

ISSUANCE SCHEDULE
 NUMBER DATE DESCRIPTION
 1 06-13-24 BID ADD #2



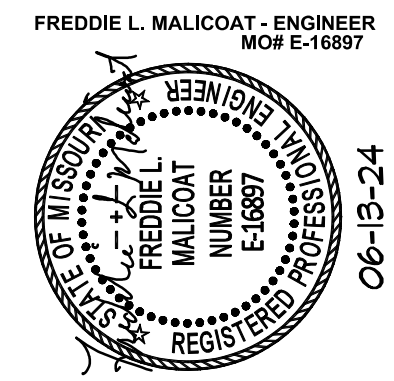
**KIRKSVILLE REGIONAL AIRPORT
 TERMINAL BUILDING**

27161 DAVID HALL TRAIL
 KIRKSVILLE, MO. 63501

PROJECT NO: MODOT 24-028A-1
 DATE ISSUED: 05-30-24
 DESIGNED BY: FLM
 DRAWN BY: JDB
 CHECKED BY: FLM

SHEET NAME:
 HVAC PLAN

T:\job\24\24058\24058.dwg, 6/13/2024, 12:02:26 PM, JoshiB



ISSUED FOR BID
NOT FOR
CONSTRUCTION

ISSUANCE SCHEDULE
 NUMBER DATE DESCRIPTION
 1 06-13-24 BID ADD #2



KIRKSVILLE REGIONAL AIRPORT
TERMINAL BUILDING

27161 DAVID HALL TRAIL
 KIRKSVILLE, MO. 63501

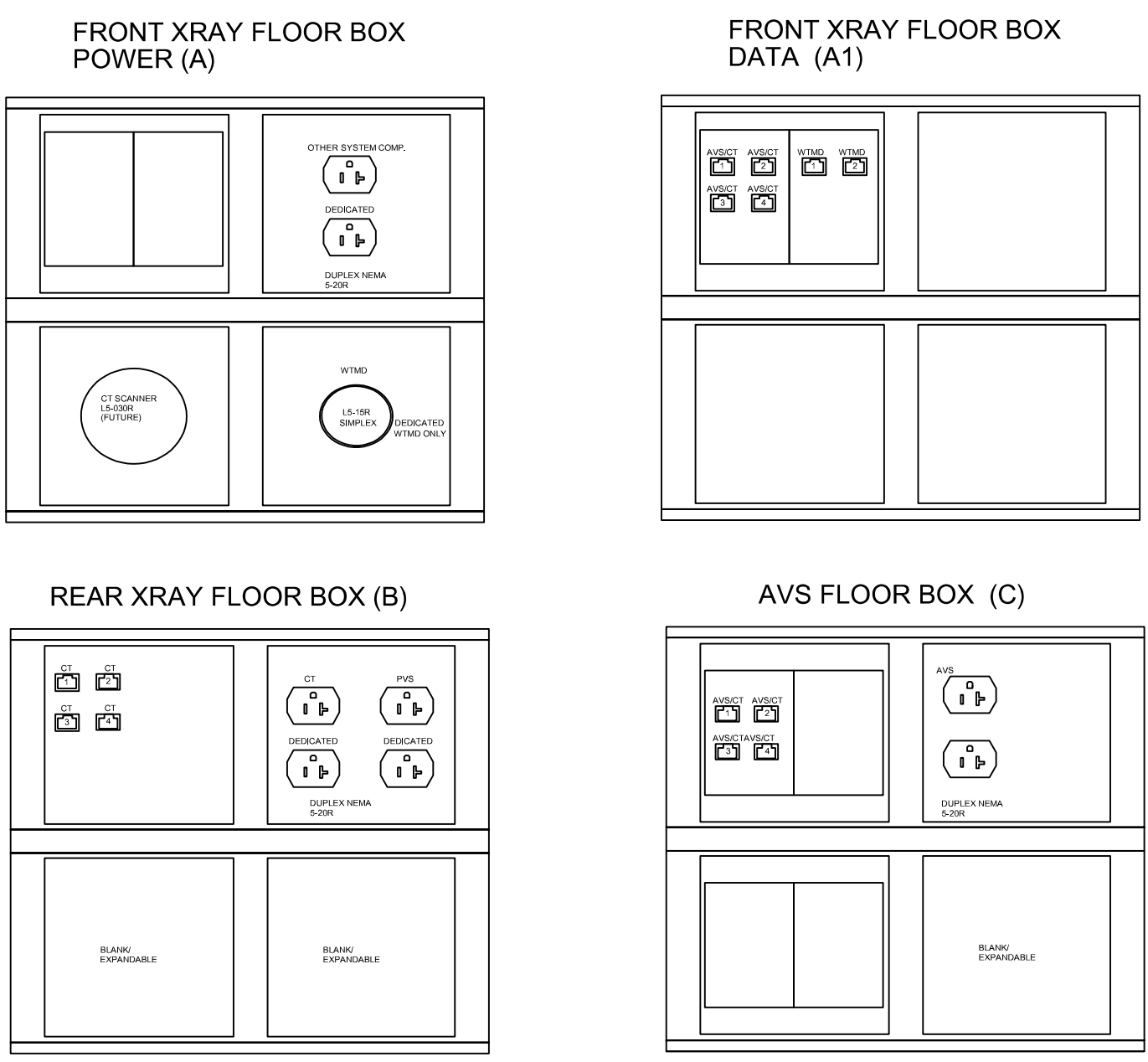
PROJECT NO: MODOT 24-028A-1
 DATE ISSUED: 05-30-24
 DESIGNED BY: FLM
 DRAWN BY: JDB
 CHECKED BY: FLM

SHEET NAME:
POWER PLAN

SHEET NO:
E-101

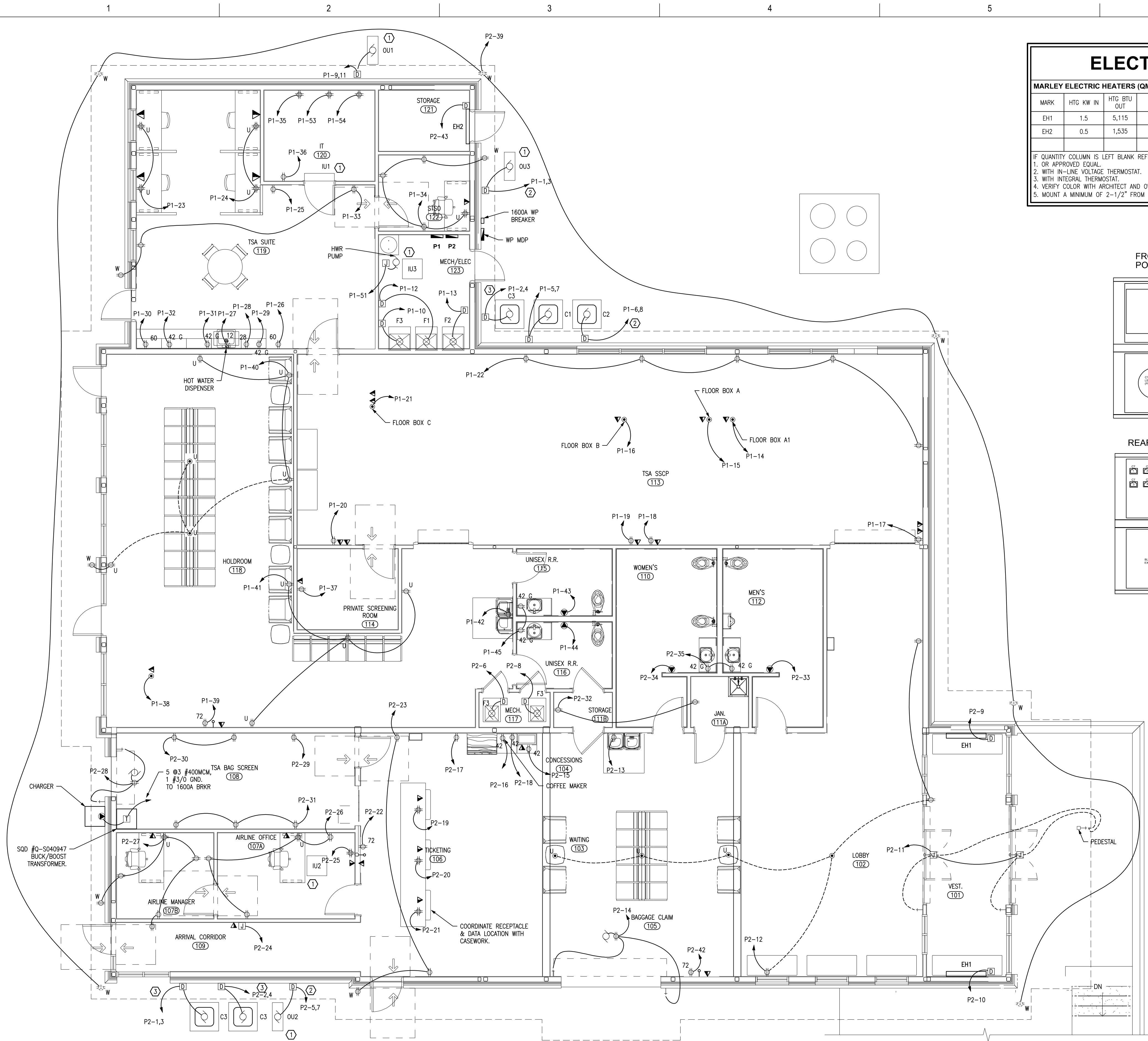
ELECTRICAL EQUIPMENT SCHEDULE										
MARLEY ELECTRIC HEATERS (QMARK)										
MARK	HTG KW IN	HTG BTU OUT	WEIGHT	DIMENSIONS	V / Ø	FLA	MOCPP	MODEL	REMARKS	
EH1	1.5	5,115	26 LBS	-	120 / 1	12.5	20	E3323TD-RP	1,3,4	
EH2	0.5	1,535	7 LBS	42" LONG	120 / 1	3.8	20	CV4512X	1,2,4,5	

IF QUANTITY COLUMN IS LEFT BLANK REFER TO PLANS. VERIFY WITH PLANS ALL QUANTITIES OF EQUIPMENT.
 1. OR APPROVED EQUAL.
 2. WITH IN-LINE VOLTAGE THERMOSTAT.
 3. WITH INTEGRAL THERMOSTAT.
 4. VERIFY COLOR WITH ARCHITECT AND OWNER PRIOR TO PURCHASE.
 5. MOUNT A MINIMUM OF 2-1/2" FROM FINISHED CEILING.



2 **TSA FLOOR BOX DETAIL**
 SCALE: NO SCALE

- GENERAL NOTES:**
1. VERIFY PLUMBING, HVAC, POWER, AND LIGHTING REQUIREMENTS FOR OWNER'S SPECIFIC EQUIPMENT PRIOR TO ROUGH-IN.
 2. COORDINATE INSTALLATION OF EQUIPMENT WITH MANUFACTURERS' INSTALLATION INSTRUCTIONS PRIOR TO ROUGH-IN.
 3. CONTRACTOR SHALL MAINTAIN FIRE RATING OF ANY PENETRATION AND SHALL SEAL ANY PENETRATION IN A FLOOR, CEILING, OR EXTERIOR WALL.
 4. VERIFY RECEPTACLE MOUNTING HEIGHTS AND LOCATIONS WITH OWNER AND ARCHITECTURAL ELEVATIONS PRIOR TO ROUGH-IN.
 5. RECEPTACLES SHALL BE MOUNTED AT 18" TO BOTTOM ABOVE FINISHED FLOOR, UNLESS NOTED OTHERWISE ON PLANS.
- KEYED NOTES:**
- ① POWER TO/FROM INDOOR/OUTDOOR UNITS.
 - ② 2#10, 1#10G (30A-2P BREAKER)
 - ③ 2#6, 1#10G (50A-2P BREAKER)



1 **POWER PLAN**
 SCALE: 3/16" = 1'-0"

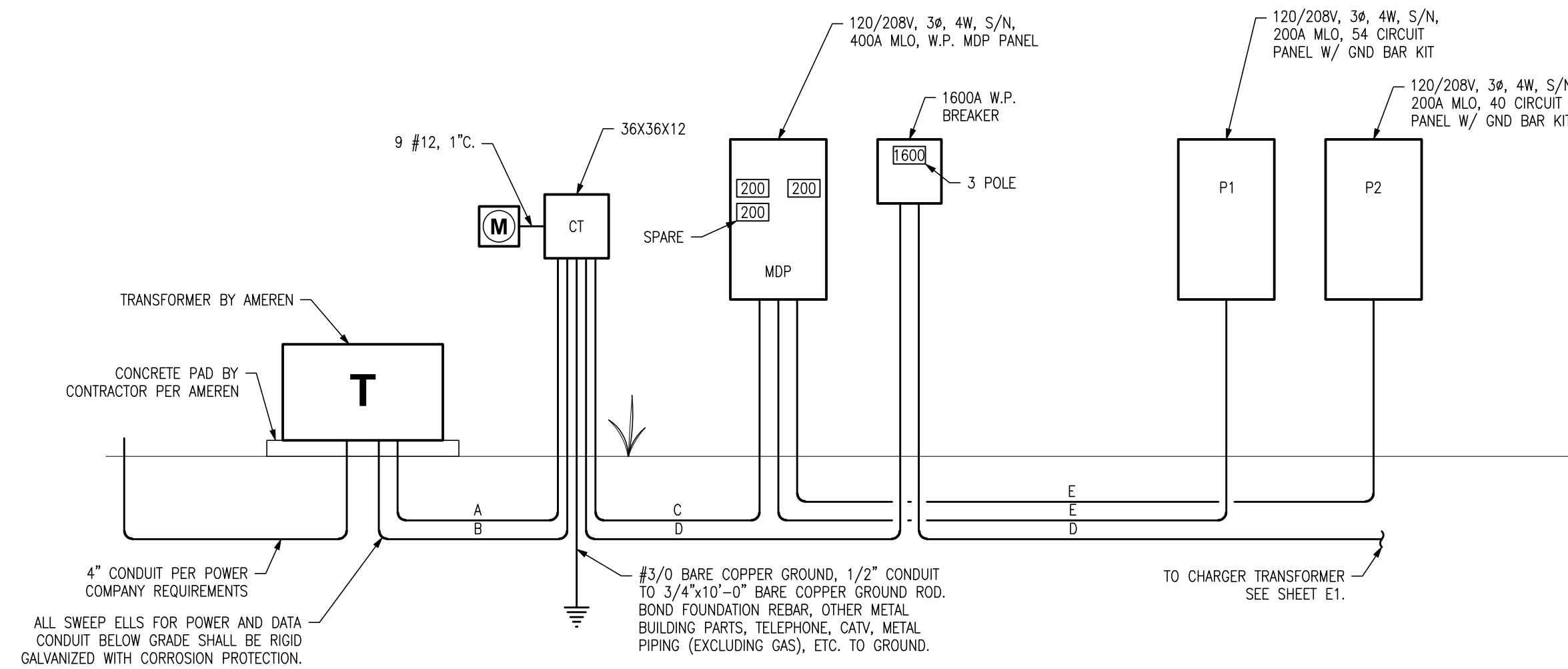
T:\Job\24\058\24058.dwg, 6/13/2024 12:02:24 PM, JoshiB

P1		VOLTS 120/208	PHASE 3	WIRE 4	MAIN CAPACITY BUSS MATERIAL MOUNTING	200 A MLO	A WATTS 17716	B WATTS 16365	C WATTS 12812	TOTAL WATTS 46893
CIRC	LOCATION / DESCRIPTION	BRKR	WATTS	#	WATTS	BRKR	LOCATION / DESCRIPTION	CIRC		
1	OUTDOOR UNIT OU3	30-2	1862	A	2236	50-2	CONDENSING UNIT C3	2		
3	-	-	1862	B	2236	-	-	4		
5	CONDENSING UNIT C1	20-2	770	C	1436	30-2	CONDENSING UNIT C2	6		
7	-	-	770	A	1436	-	-	8		
9	OUTDOOR UNIT OU1	20-2	827	B	1728	20-1	FURNACE F3	10		
11	-	-	827	C	936	20-1	FURNACE F1	12		
13	FURNACE F2	20-1	936	A	500	20-1	TSA SSCP/FLOOR BOX A	14		
15	TSA SSCP/FLOOR BOX A	20-1	500	B	500	20-1	TSA SSCP/FLOOR BOX B	16		
17	TSA SSCP/COMPUTER	20-1	250	C	500	20-1	TSA SSCP/BODY SCANNER	18		
19	TSA SSCP/BODY SCANNER	20-1	500	A	250	20-1	TSA SSCP/COMPUTER	20		
21	TSA SSCP/COMPUTER	20-1	500	B	900	20-1	TSA SSCP/RECEPTACLES	22		
23	TSA SUITE/COMPUTERS	20-1	720	C	720	20-1	TSA SUITE/COMPUTERS	24		
25	TSA SUITE/COPIER	20-1	500	A	500	20-1	TSA SUITE/REFRIGERATOR	26		
27	TSA SUITE/HOT WATER DISP.	20-1	750	B	1500	20-1	TSA SUITE/COFFEE MAKER	28		
29	TSA SUITE/MICROWAVE	20-1	1500	C	1500	20-1	TSA SUITE/MICROWAVE	30		
31	TSA SUITE/RECEPTACLES	20-1	1500	A	1500	20-1	TSA SUITE/RECEPTACLES	32		
33	TSA SUITE/RECEPTACLES	20-1	540	B	1080	20-1	STSO/RECEPTACLES	34		
35	IT/RECEPTACLES	20-1	360	C	180	20-1	IT/RECEPTACLES	36		
37	PRIVATE SCREENING/RECEPTACLES	20-1	180	A	180	20-1	HOLDROOM/KIOSK	38		
39	HOLDROOM/TV	20-1	180	B	1260	20-1	HOLDROOM/RECEPTACLES	40		
41	HOLDROOM/RECEPTACLES	20-1	720	C	360	20-1	HOLDROOM/EWC	42		
43	UNISEX R.R./HAND DRYER	20-1	1450	A	1450	20-1	UNISEX R.R./HAND DRYER	44		
45	UNISEX R.R./RECEPTACLES	20-1	360	B	480	20-1	TSA SUITE/LIGHTS	46		
47	TSA SSCP/LIGHTS	20-1	626	C	687	20-1	HOLDROOM/LIGHTS	48		
49	RESTROOM/LIGHTS	20-1	856	A	1110	20-2	PARKING LOT LIGHTS*	50		
51	HWRP	20-1	52	B	1110	-	-	52		
53	IT/RECEPTACLES	20-1	360	C	360	20-1	IT/RECEPTACLES	54		

*SEE SHEETS CE100 AND CE200 FOR LOCATION AND SPECIFICATIONS RESPECTIVELY

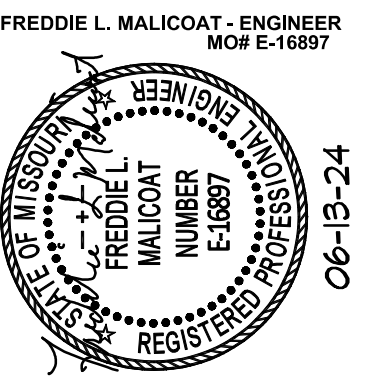
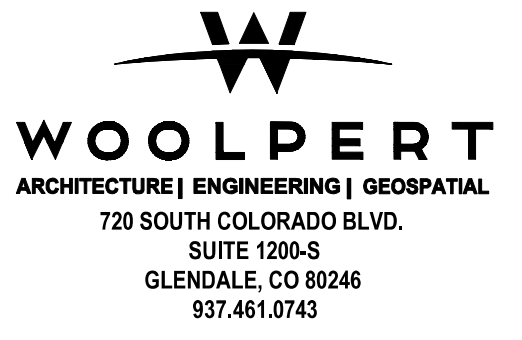
MDP		VOLTS 120/208	PHASE 3	WIRE 4	MAIN CAPACITY BUSS MATERIAL MOUNTING	400 A MLO	A WATTS 30696	B WATTS 30995	C WATTS 22851	TOTAL WATTS 84542
CIRC	LOCATION / DESCRIPTION	BRKR	WATTS	#	WATTS	BRKR	LOCATION / DESCRIPTION	CIRC		
1	PANEL P1	200-3	17716	A	12980	200-3	PANEL P2	2		
3	-	-	16365	B	14630	-	-	4		
5	-	-	12812	C	10039	-	-	6		
7	SPARE	20-3	0	A	0	100-3	SPARE	8		
9	-	-	0	B	0	-	-	10		
11	-	-	0	C	0	-	-	12		

P2		VOLTS 120/208	PHASE 3	WIRE 4	MAIN CAPACITY BUSS MATERIAL MOUNTING	200 A MLO	A WATTS 12980	B WATTS 14630	C WATTS 10039	TOTAL WATTS 37649
CIRC	LOCATION / DESCRIPTION	BRKR	WATTS	#	WATTS	BRKR	LOCATION / DESCRIPTION	CIRC		
1	CONDENSING UNIT C3	50-2	2236	A	2236	50-2	CONDENSING UNIT C3	2		
3	-	-	2236	B	2236	-	-	4		
5	OUTDOOR UNIT OU2	30-2	1500	C	1728	20-1	FURNACE F3	6		
7	-	-	1500	A	1728	20-1	FURNACE F3	8		
9	VEST./EH1	20-1	1000	B	1000	20-1	VEST./EH1	10		
11	VEST./DOOR OPERATOR	20-1	400	C	1260	20-1	LOBBY/RECEPTACLES	12		
13	LOBBY/EWC	20-1	360	A	500	20-1	BAGGAGE CLAIM/OHD OPENER	14		
15	CONCESSIONS/POS	20-1	180	B	1500	20-1	CONCESSIONS/COFFEE MAKER	16		
17	CONCESSIONS/REFRIGERATOR	20-1	500	C	180	20-1	CONCESSIONS/RECEPTACLE	18		
19	TICKETING/POS	20-1	360	A	360	20-1	TICKETING/POS	20		
21	TICKETING/POS	20-1	360	B	180	20-1	TICKETING/TV	22		
23	TICKETING/RECEPTACLES	20-1	540	C	1000	20-1	ARRIVAL CORRIDOR MACHINE	24		
25	AIRLINE OFFICES/SERVER	20-1	360	A	900	20-1	AIRLINE OFFICES/RECEPTACLES	26		
27	AIRLINE OFFICES/RECEPTACLES	20-1	1260	B	500	20-1	TSA BAG SCREEN/OHD OPENER	28		
29	TSA BAG SCREEN/RECEPTACLES	20-1	180	C	360	20-1	TSA BAG SCREEN/RECEPTACLES	30		
31	TSA BAG SCREEN/RECEPTACLES	20-1	540	A	360	20-1	JANITOR/CLEANING MACHINE	32		
33	MENS/HAND DRYER	20-1	1450	B	1450	20-1	WOMENS/HAND DRYER	34		
35	RESTROOM/RECEPTACLES	20-1	360	C	1501	20-1	LOBBY/TICKETING/LIGHTS	36		
37	TSA BAG SCREEN/LIGHTS	20-1	430	A	660	20-1	LOBBY/TICKETING/FANS	38		
39	SOFFIT/RECEPTACLES	20-1	1080	B	198	30-1	EXTERIOR LIGHTS	40		
41	EXTERIOR LIGHTS	20-1	350	C	180	20-1	BAGGAGE CLAIM/TV	42		
43	STORAGE/EH2	20-1	450	A	0	20-1	SPARE	44		
45	SPARE	20-1	0	B	0	20-1	SPARE	46		
47	SPARE	20-1	0	C	0	20-1	SPARE	48		
49	SPARE	20-1	0	A	0	20-1	SPARE	50		
51	SPARE	20-1	0	B	0	20-1	SPARE	52		
53	SPARE	20-1	0	C	0	20-1	SPARE	54		



1 ELECTRIC RISER DIAGRAM
E-103 NO SCALE

WIRE SIZE SCHEDULE			
MARK	DESCRIPTION	RATING	WIRE SIZE
A	CT CABINET	400-3	4 #500MCM, 4" C.
B	CT CABINET	1600-3	5 @4" C. EA. W/ 4 #400MCM.
C	MDP	400-3	4 #500MCM, 1 #3/0 GND, 4" C.
D	1600A BKR/CHARGER XFMR	1600-3	5 @4" C. EA. W/ 4 #400MCM, 1 #3/0 GND.
E	PANELS P1 & P2	200-3	4 #3/0, 1 #6 GND, 3" C.



**ISSUED FOR BID
NOT FOR
CONSTRUCTION**

ISSUANCE SCHEDULE NUMBER: 06-13-24
DESCRIPTION: BID ADD #2



**KIRKSVILLE REGIONAL AIRPORT
TERMINAL BUILDING**

27161 DAVID HALL TRAIL
KIRKSVILLE, MO. 63501

PROJECT NO: MODOT 24-028A-1
DATE ISSUED: 05-30-24
DESIGNED BY: FLM
DRAWN BY: JDB
CHECKED BY: FLM

SHEET NAME:
**PANEL SCHEDULES
& ELECTRICAL
RISER**

SHEET NO:
E-103