

Upcoming construction on I-44 in St. Louis County

2018

Murdoch to Route 141

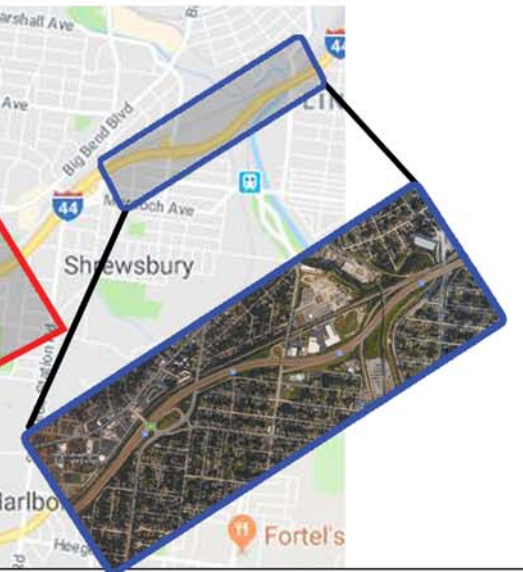
- Pavement repairs and resurfacing
- March through December
- Off-peak lane closures each direction
- Lindbergh to Soccer Park included at end of Meramec River Bridge project
- Overnight ramp closures



2018-Spring 2019

I-44 over BNSF Railroad

- Murdoch Ave to city limits
- March through December
- Three eastbound, two westbound lanes open
- Eastbound traffic shifted to westbound bridge
- Shrewsbury Ramp to EB I-44 ramp closed
- Resurfacing in Spring 2019



Fall 2018-2021

I-44 Bridges over Meramec

- Replace the westbound and eastbound I-44 bridges
- Replace the I-44 ramp bridges to, from Watson Road
- One I-44 lane closed around the clock, each direction
- Summer ramp closures to replace Watson bridges
- Shifting traffic and lanes throughout project
- Starts after Route 141 Design Build completed



Through July 2018

Route 141 Design Build

- Improves traffic flow between I-44 and Route 141
- Includes new loop ramps and flyover ramp
- Off-peak lane closures

