

## I-64 PROJECT IS READY FOR JANUARY CLOSURE

As I-64 commuters return to work after the holidays many of them will have to find new ways to get there and back. Early in the morning on January 2, and for the rest of 2008, both directions of I-64 will be closed between Ballas Road and I-170 as Gateway Constructors begins the freeway's total reconstruction.

At the west end of the closure, all eastbound traffic will be diverted at I-270 north toward I-70, or south toward I-44. One eastbound lane will remain open to Ballas Road.

At the east end of the closure, two lanes of westbound I-64 traffic will be routed north on I-170 using the new ramp. One westbound lane will allow drivers to exit at Hanley Road. There will be no access to or from

Brentwood Boulevard and I-64 during the 2008 closure.

Two lanes of southbound I-170 traffic will be routed to eastbound I-64 on the new flyover ramp, which will be opened as soon as the closure of the I-64 mainline is completed. One southbound lane will remain open to Eager Road. One lane will also remain open from Eager Road to northbound I-170.

Once the closure is complete, demolition is scheduled to begin almost immediately at Lindbergh Boulevard and on the Clayton/Warson bridge. Work in both of those areas will begin in early January, with reconstruction of Brentwood Boulevard beginning by the end of that month.

Meanwhile, as the January closure draws closer, Gateway Constructors crews are hard at work completing the freeway-to-freeway connections with I-170 that will make that closure possible.

The first of those connections was completed October 22 when traffic was shifted onto the new ramp from westbound I-64 to northbound I-170. Final paving work continues for the ramp from southbound I-170 to eastbound I-64, which will open on January 2. Opening it prior to that would create a conflict between the ramp traffic merging into the left lanes of the eastbound I-64 mainline.

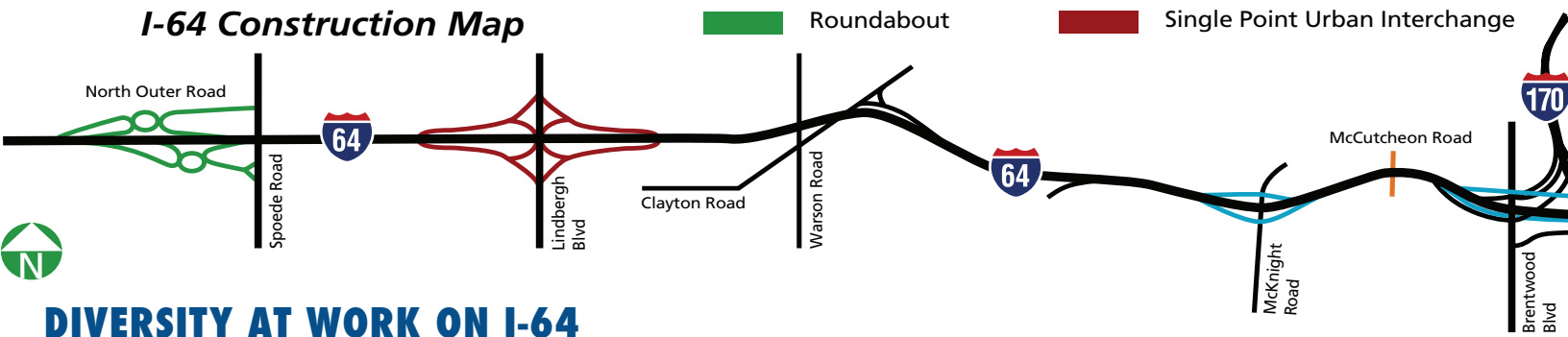
*Continued on page 3*



**ABOVE:** Construction continues on the flyover ramps for the freeway-to-freeway interchange connecting I-170 with I-64. **RIGHT:** Traffic is already using the westbound to northbound ramp.



## I-64 Construction Map



## DIVERSITY AT WORK ON I-64

When it comes to the I-64 reconstruction project, the Missouri Department of Transportation (MoDOT) is interested in more than just improving the freeway. MoDOT also wanted to make sure that the massive project provides opportunities for a wide range of people and businesses.

To that end, MoDOT set a Disadvantaged Business Enterprise (DBE) goal for the job of 16%, and created construction on-the-job training. That means that 16% of the \$420 million

contract cost should be available to socially and economically disadvantaged business owners. At least 20% of the workforce hours will include socially and economically disadvantaged individuals who will be trained in heavy highway construction trades.

The I-64 pre-apprentice training programs sponsored by MoDOT have graduated several classes this year, and some



*Right: AG Mack is among the DBE firms subcontracted on the project with a scope of work that included demolition of houses located along the I-64 corridor.*



*Right: PG&E crews plan to pour concrete for what will become the new I-64 mainline between Hanley Road and I-170.*

*Above: On-the-job trainee carpenter Phil Harrington at work on the I-170/I-64 interchange.*

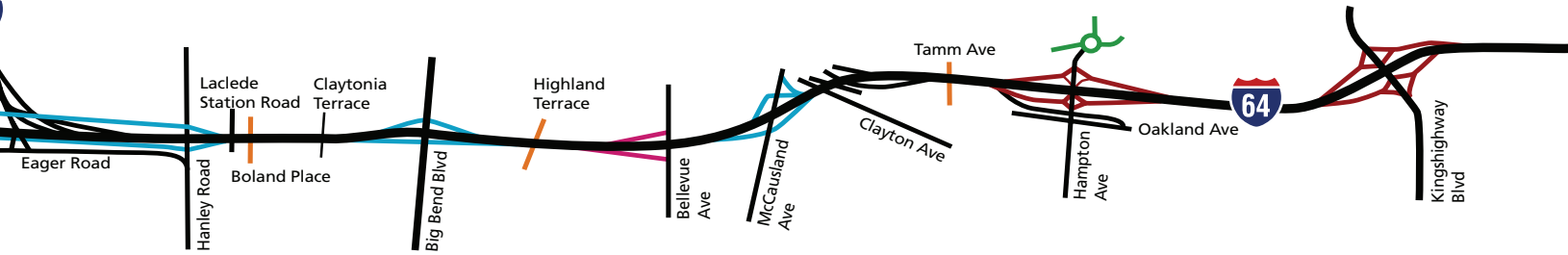


*Above & Left: Dwight Sloan is an Apprentice Operator in Local #513 and has been on the I-64 project since June 2007. He is a graduate from the Construction Careers Center high school and an On-the-Job trainee on the I-64 Project.*



*Above & Right: The Dogtown to Forest Park bridge to be reconstructed on October 20 reopens day from when it was closed.*





of the graduates from these programs are now working on the I-64 Project.

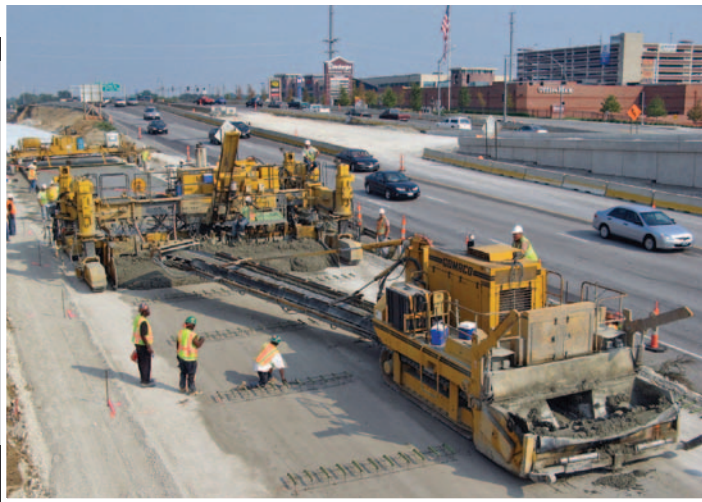
Anyone interested in pre-apprentice training for minorities, women, and economically and socially disadvantaged individuals should contact the Construction Prep Center at 314-746-0870 or Pride Pre-Apprentice Training Program at 314-261-0302 or 314-644-1525.

## CONTACT US

INFOLINE:  
314-524-9191

TRAVEL INFORMATION:

WEBSITE:  
[www.thenewi64.org](http://www.thenewi64.org)



## JANUARY CLOSURE (CONT.)

*Continued from page 1*

Bridge reconstruction work is complete at Tamm Avenue and the structure reopened to traffic on October 20. The Tamm Avenue bridge was the first bridge to be taken down for reconstruction and the first new piece of the project to be completed, exactly six months from the day it was imploded.

The first phase of Kingshighway Boulevard/I-64 interchange reconstruction is also nearing completion. By the end of November, traffic will be shifted onto newly constructed bridges over I-64 and Clayton Avenue between Oakland Avenue and Hospital Plaza Drive. Demolition of the remaining half of the Kingshighway interchange will occur in early December and require another weekend full closure of I-64.

Reconstruction of the three bridges between Hanley Road and McCausland Avenue is also well underway. Girders and much of the bridge deck are already in place at Bellevue Avenue and soon will be at Highland Terrace as well. Reconstruction work at Boland Place is scheduled about 30 days behind the work on the other two structures. All three bridges reopen in early 2008.



Tamm Avenue bridge connecting Park and the Zoo was the first reconstructed. A ribbon cutting ceremony opened the bridge six months to the day it was demolished.





The New I-64 Project  
8474 Delport Drive  
Vinita Park, MO 63114

## **PUBLIC MEETINGS**

**Wednesday, Nov. 14**

**5:00 PM - 8:00 PM**

**MoDOT**

**Transportation Management Center**

**14301 South Outer 40, Town & Country, 63017**

**Thursday, November 15**

**4:00 PM - 7:00 PM**

**Clayton High School (Commons Area)**

**1 Mark Twain Circle, Clayton, 63105**

## **PREPARE FOR CONGESTION**

MoDOT, METRO, St. Louis City, St. Louis County and many other municipalities have been working together for more than a year to prepare for the traffic detoured off I-64 during the closures. Unprecedented efforts of regional cooperation and collaboration have resulted in improvements to all parallel roads to I-64 between Interstate 70 and Interstate 44. Here are just some of the upgrades that will help these roads handle more traffic:

- I-70 = restripe extra lane in each direction from I-270 to I-170
- I-44 = restripe extra lane in each direction from I-270 to I-55
- Improved signal timing and coordination on Page, Olive, Manchester, Clayton, Brentwood, Hanley, Big Bend, Kingshighway, Grand and Forest Park Parkway
- Restriping lanes at I-270 interchanges at I-70, I-64 and I-44 to better handle flow of traffic
- Accelerated projects to be complete at Dougherty Ferry and I-270 by September 2007 and at Olive Blvd. and I-170 by December 2007
- Travel time information added to all large changeable message boards on interstates throughout St. Louis
- I-64 Traffic Response team added to assist motorists on non-interstate major roads to keep traffic moving on parallel routes

- Limited maintenance or permit work allowed on all roads between I-70 and I-44 except at night during 2008 and 2009
- Expanded MetroBus parking and routes to assist commuters

## **PLAN YOUR TRIP**

### **Before you drive:**

Visit [www.modot.org](http://www.modot.org):

- Click on **The New I-64** for Hwy 40 daily work
- Click on **Gateway Guide** for current traffic conditions
- Click on **Map My Trip** to get street-to-street directions routing you around current road closures
- Call **511** for current traffic information

### **On the Road:**

Read Message Boards with current travel times and lane closures

### **Questions about MoDOT work:**

- Call Customer Service at 1-888-ASK-MODOT
- Call I-64 infoline for project specific problems at 314-524-9191

### **For Regular Email Updates:**

- Sign up at [www.modot.org](http://www.modot.org) for all St. Louis information
- Sign up at [www.thenewi64.org](http://www.thenewi64.org) for I-64 weekly updates