

PROJECT ON SCHEDULE FOR REOPENING BY END OF 2009

HANLEY BRIDGE REOPENS BY EARLY AUGUST

Progress continues on Phase 2 reconstruction of the I-64 project, thanks to much less interference from the weather this year. The reopening of two important bridges is scheduled to occur by the first week of August, and the project remains on schedule to reopen all lanes of I-64 by the end of December.

The Hanley Road bridge is currently scheduled to reopen to traffic by early August, providing some relief to drivers looking for a way to cross the I-64 construction zone. Demolition of the old crossing took place in late December, shortly after the second half of the project got underway. With the June closing of the Big Bend Boulevard bridge, north and south movement of traffic around the highway has put extra pressure on the remaining alternate routes. Having Hanley available again is likely to help relieve congestion on Brentwood Boulevard and smaller local streets.

Once Hanley reopens, plenty of work will remain to be completed as the roadway is linked to Eager Road through a new crossing underneath the bridge. Direct access between Hanley and Eager will be closed for as long as three months

as the final excavation and paving is completed on the sections of roadway that will take northbound Hanley traffic west on Eager and eastbound Eager traffic to northbound Hanley. While the finishing touches to the interchange are wrapped up, access between Hanley and Eager Road will be possible on Meridian Drive, the street leading to the Metro garage that currently allows traffic to access Dale Avenue (see detail map on back page).

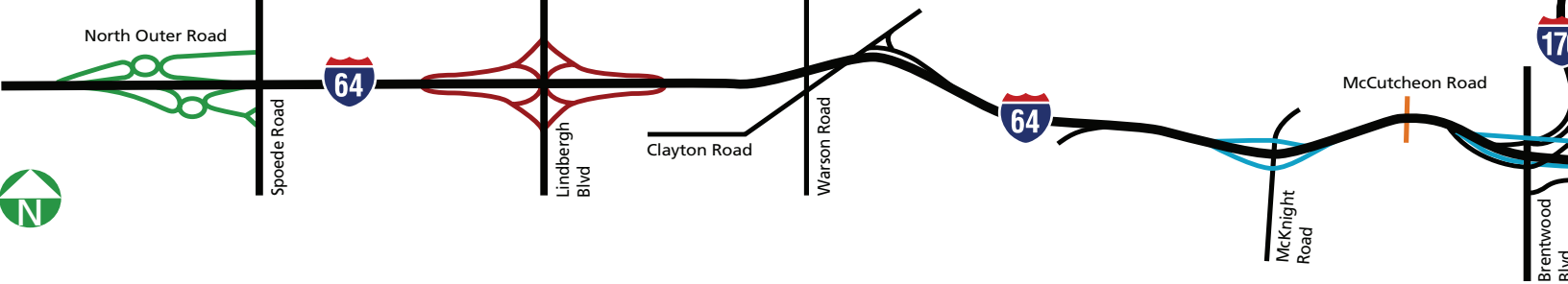
Another bridge close to completion is the Oakland Avenue crossing from Skinker/McCausland to Dogtown. The bridge is currently scheduled to reopen in early August and will provide drivers with another route over the highway, tying Oakland to Skinker/McCausland Avenue. As soon as Oakland reopens, the nearby Clayton Road bridge will be closed and demolished. The Clayton Road bridge will be the final structure to be rebuilt on the I-64 project.

As for Big Bend, the new bridge is rapidly coming up out of the ground. Two months after the old bridge was demolished, the abutments have been constructed and concrete girders will soon be set in place. A major change to that intersection will be the addition of eastbound exit and westbound entrance ramps that will allow drivers to get to and from Big Bend and I-64 in all four directions.

While bridgework continues over the highway, down below, much of the highway's mainline paving is also taking shape. The first phase of mainline pavement has been completed between Kingshighway Boulevard and the Clayton/Sinker intersection, a distance of more than two miles. Paving crews are still finishing up the smaller pieces, such as shoulders, barriers, and medians, as well as the oddly shaped sections that can't be paved by machine. Mainline paving has also begun between McCausland Avenue and Big Bend Boulevard and will soon start farther west between I-170 and Big Bend.



ABOVE: Aerial view of the new Hanley bridges over Eager and over I-64.



I-64 Construction Map

not to scale



Roundabout

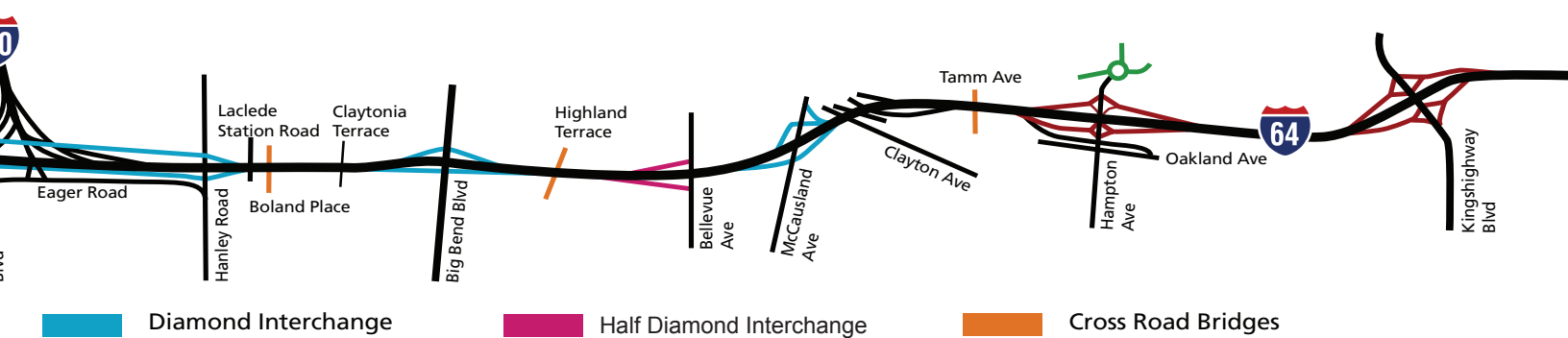


Single Point Urban Interchange

BELOW: Clockwise from Top Left

Paving crews pour a sidewalk on the Hanley Road bridge, which is scheduled for completion by August. (next) A roller and a dozer compact fill dirt at the Oakland Avenue bridge, also scheduled to open in August. (below) Mainline paving has also begun between McCausland Avenue and Big Bend Boulevard, including part of the connector road to Bellevue Avenue. (below left) At Big Bend, abutments for the new bridge have been formed and workers prepare it for girders to be set in early August.





BELOW: Clockwise from Top Left

Looking west from Hampton, more than two miles of mainline pavement has been completed between McCausland/Skinker and Kingshighway Boulevard. Paving crews are now completing shoulders (at right), and medians (below) as well as other pieces too small or oddly shaped to be completed by machines.





The New I-64 Project
8474 Delport Drive
Vinita Park, MO 63114

CONTACT US

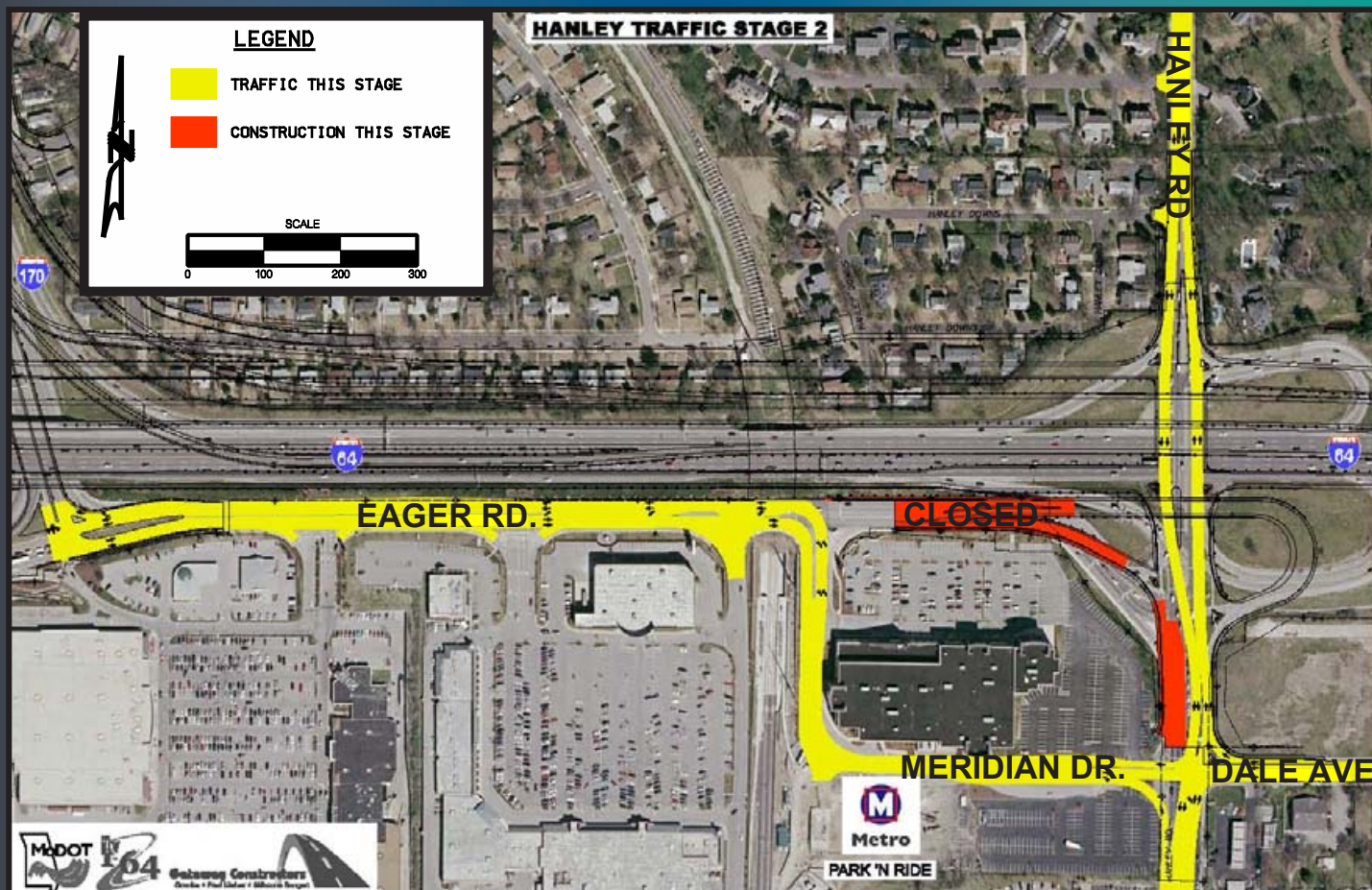
INFOLINE:
314-524-9191

WEBSITE:
www.thenewi64.org

TRAVEL INFORMATION:



Find us on
Facebook



From August through October, access between Hanley and Eager Road will be possible on Meridian Drive, the street leading to the Metro garage that currently allows traffic to access Dale Avenue.