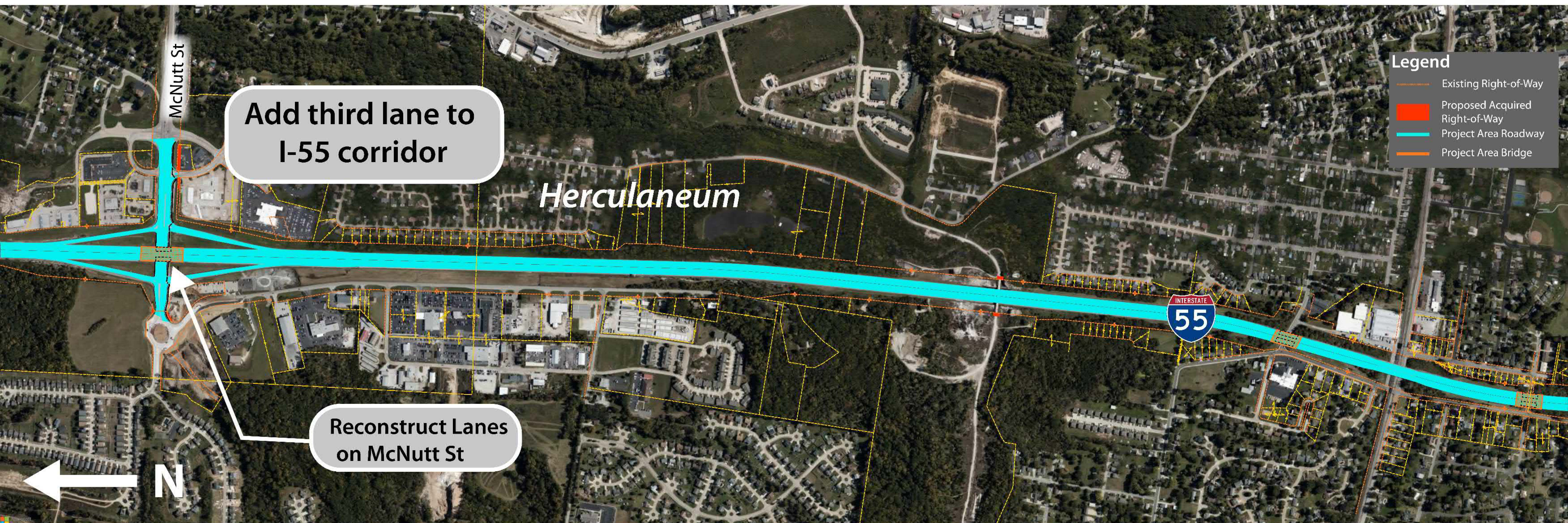


# Preliminary Design

## I-55 CORRIDOR IMPROVEMENTS

### Herculaneum Interchange Area



#### Herculaneum Interchange Preliminary Design

Construction of an additional lane in each direction on I-55

- Reduces congestion experienced during peak hours
- Increases reliability of I-55 during peak hours and during incidents
- Supports proposed and future developments in the region

#### Herculaneum Interchange Preliminary Design (continued)

New bridge over McNutt Street and McNutt Street reconstruction

- Allows for better lane geometry on McNutt Street with no barriers between lanes
- Allows for multi-use trail along McNutt Street
- Increases capacity of McNutt Street
- Provides improved connection to McNutt Street roundabout that accommodates full build-out of roundabout
- Supports proposed and future developments in the area
- Allows easier movement of heavy truck traffic