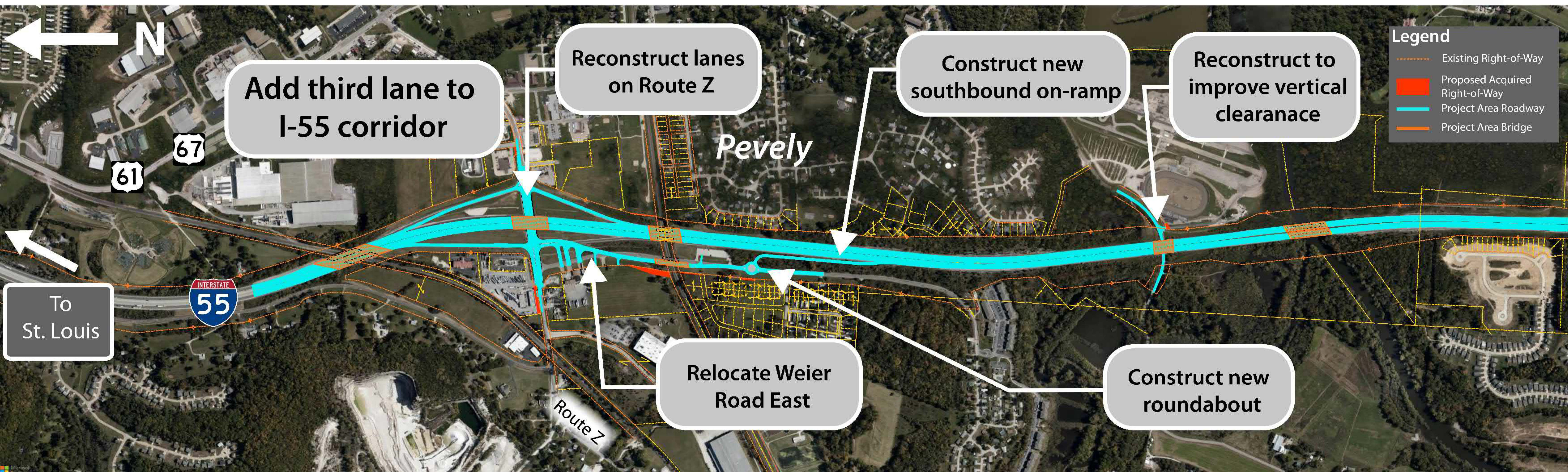


Preliminary Design

I-55 CORRIDOR IMPROVEMENTS

Pevely Interchange Area



Pevely Interchange Preliminary Design

Construction of an additional lane in each direction on I-55 starting at Route Z

- Reduces congestion experienced during peak hours
- Increases reliability of I-55 during peak hours and during incidents
- Supports proposed and future developments in the region

Interchange Ramps

- Improves safety by increasing ramp lengths with more distance for acceleration and deceleration

Pevely Interchange Preliminary Design (continued)

Relocation of Weier Road and new southbound on-ramp

- Provides connection to Route Z at a signalized intersection allowing better access for heavy truck traffic
- Supports proposed and future developments in the area
- Provides safer and easier access to southbound I-55

New bridge over Route Z

- Allows for better lane geometry on Route Z with no barriers between lanes
- Increases capacity of Route Z
- Allows for sidewalk along Route Z

New bridges over Burlington Northern Railroad, Union Pacific Railroad, Herky Korine Road and Joachim Creek

- Improves durability with new bridges