



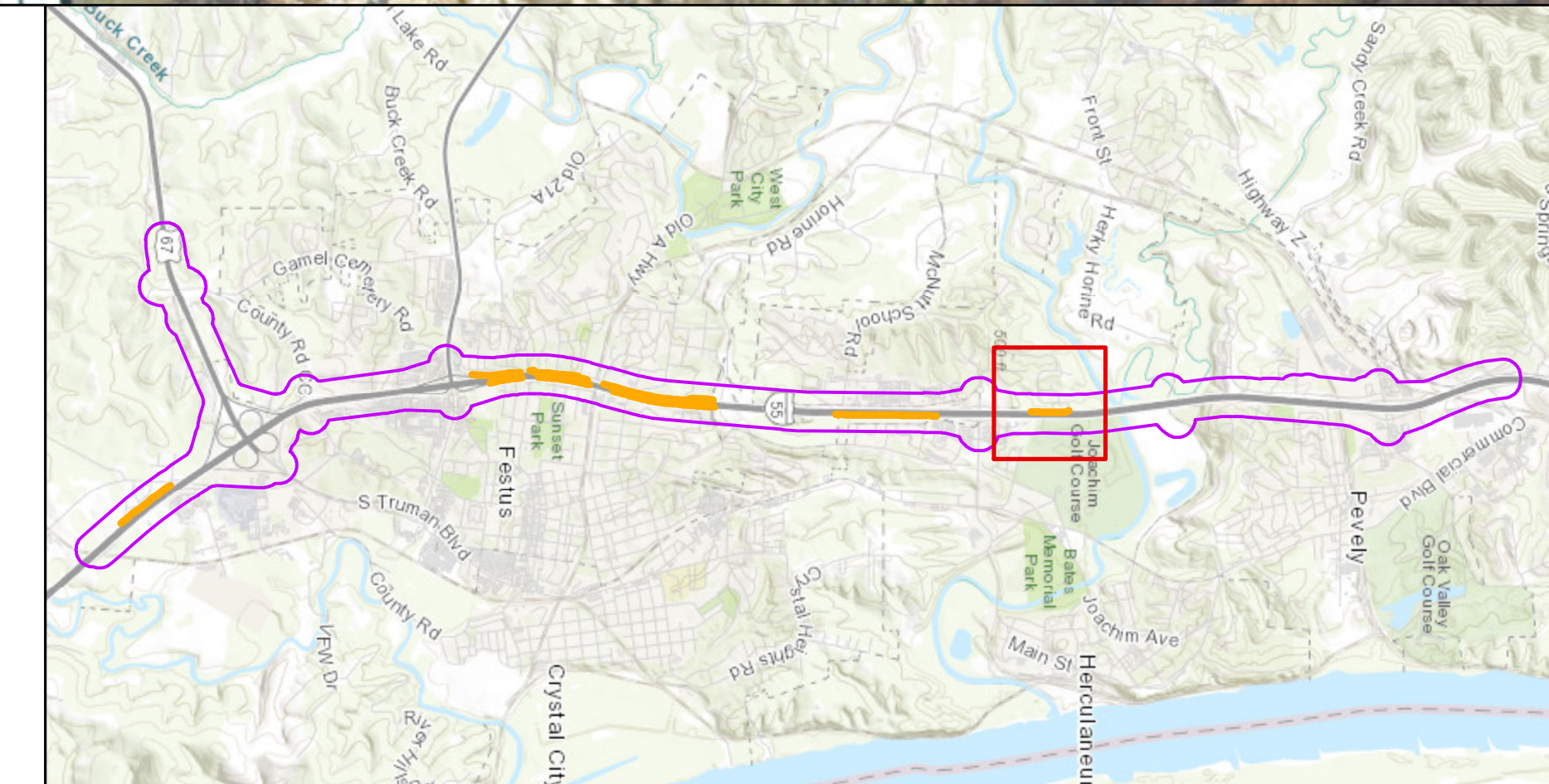
NW 6
 Length: 1,103'
 Height Range: 10' - 18'
 Impacted Receivers: 12
 Benefited Receivers: 12
 Eligible for noise wall

Legend

Receptors

- Impacted, Benefited
- Not Impacted, Benefited
- Impacted, Not Benefited
- Not Impacted, Not Benefited
- Likely Noise Wall

0 100 200 Feet



**Bartlett
& West**



**Noise Wall Map
NW 6**

JEFFERSON COUNTY