



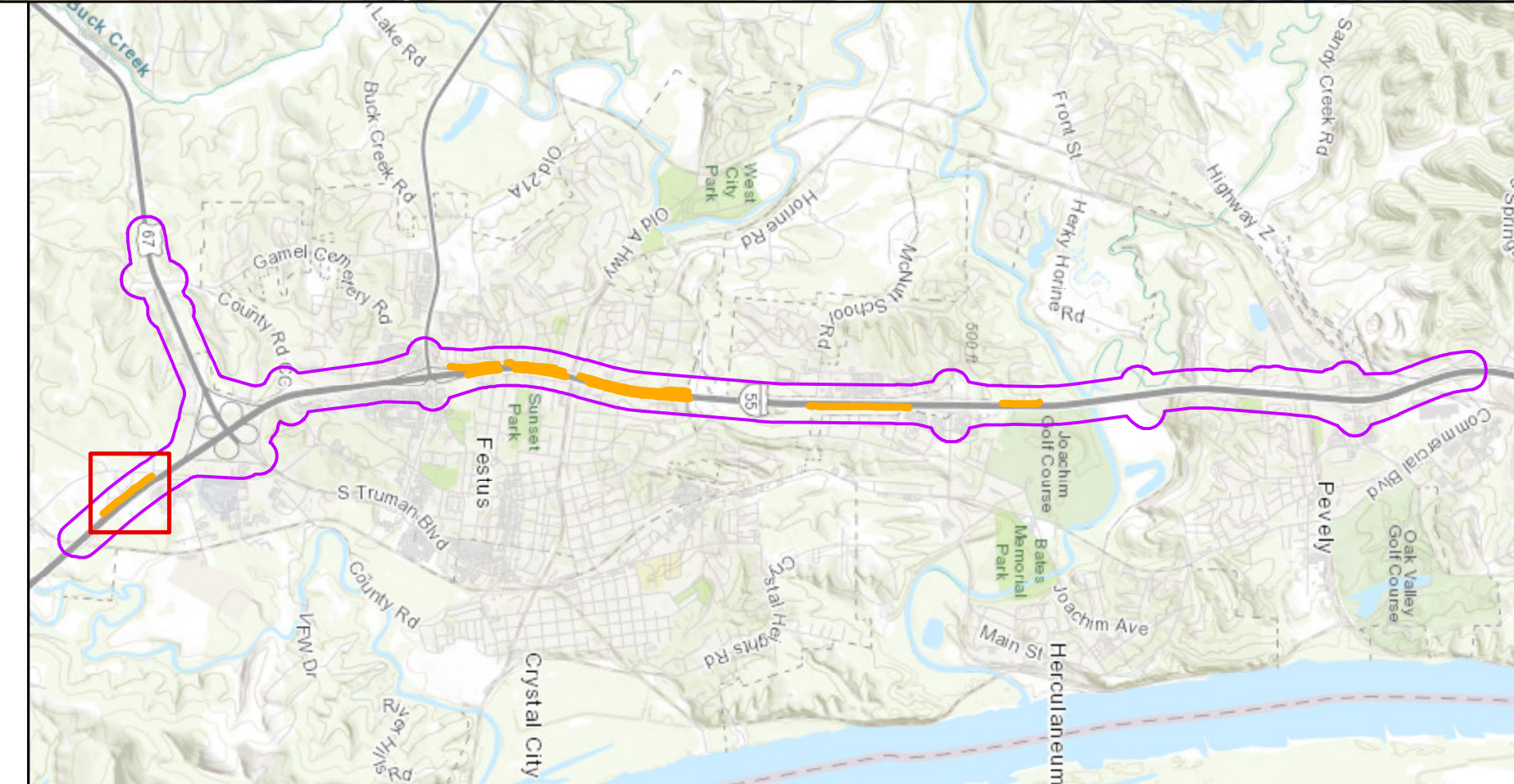
**NW 17**  
**Length: 1,797'**  
**Height Range: 12' - 20'**  
**Impacted Receivers: 24**  
**Benefited Receivers: 22**  
**Eligible for noise wall**

**Legend**

Receptors

- Impacted, Benefited
- Not Impacted, Benefited
- Impacted, Not Benefited
- Not Impacted, Not Benefited
- Likely Noise Wall

0 100 200 Feet



**Bartlett  
& West**



**Noise Wall Map**  
**NW 17**

**JEFFERSON COUNTY**