



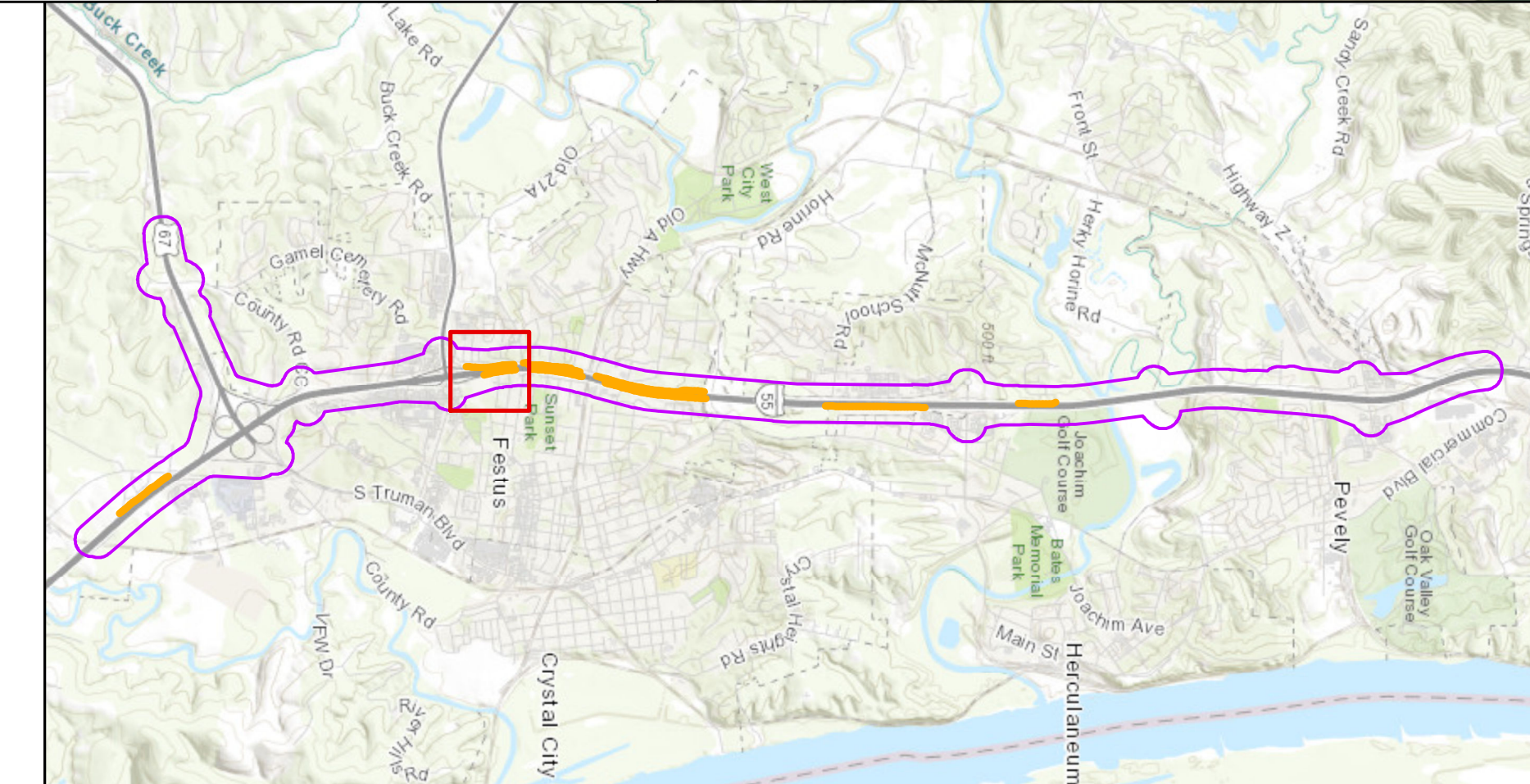
<p>NW 11 Length: 930' Height Range: 10' - 16' Impacted Receivers: 15 Benefited Receivers: 10 Eligible for noise wall</p>	<p>NW 14 Length: 1,396' Height Range: 16' - 20' Impacted Receivers: 27 Benefited Receivers: 23 Eligible for noise wall</p>
---	---

Legend

Receptors

- Impacted, Benefited
- Not Impacted, Benefited
- Impacted, Not Benefited
- Not Impacted, Not Benefited
- Likely Noise Wall

0 100 200 Feet



**Bartlett
& West**



**Noise Wall Map
NW 11 & NW 14**

JEFFERSON COUNTY