



<p>NW 10 Length: 1,483' Height Range: 12' - 18' Impacted Receivers: 40 Benefited Receivers: 11 Eligible for noise wall</p>	<p>NW 13 Length: 1,707' Height Range: 12' - 18' Impacted Receivers: 37 Benefited Receivers: 22 Eligible for noise wall</p>
---	---

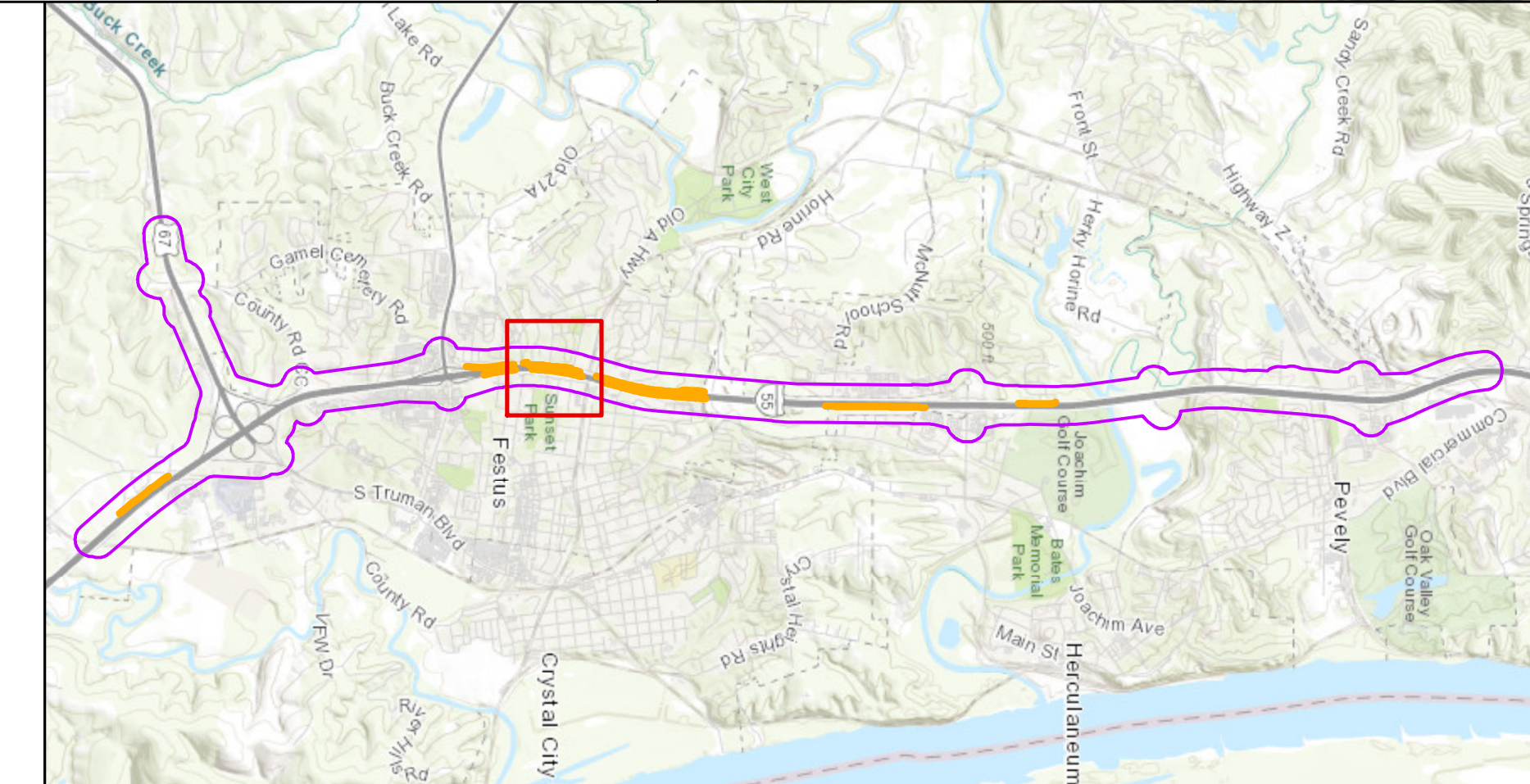
Legend

Receptors

- Impacted, Benefited
- Not Impacted, Benefited
- Impacted, Not Benefited
- Not Impacted, Not Benefited
- Likely Noise Wall

0 100 200 Feet

z



**Bartlett
& West**



**Noise Wall Map
NW 10 & NW 13**

JEFFERSON COUNTY