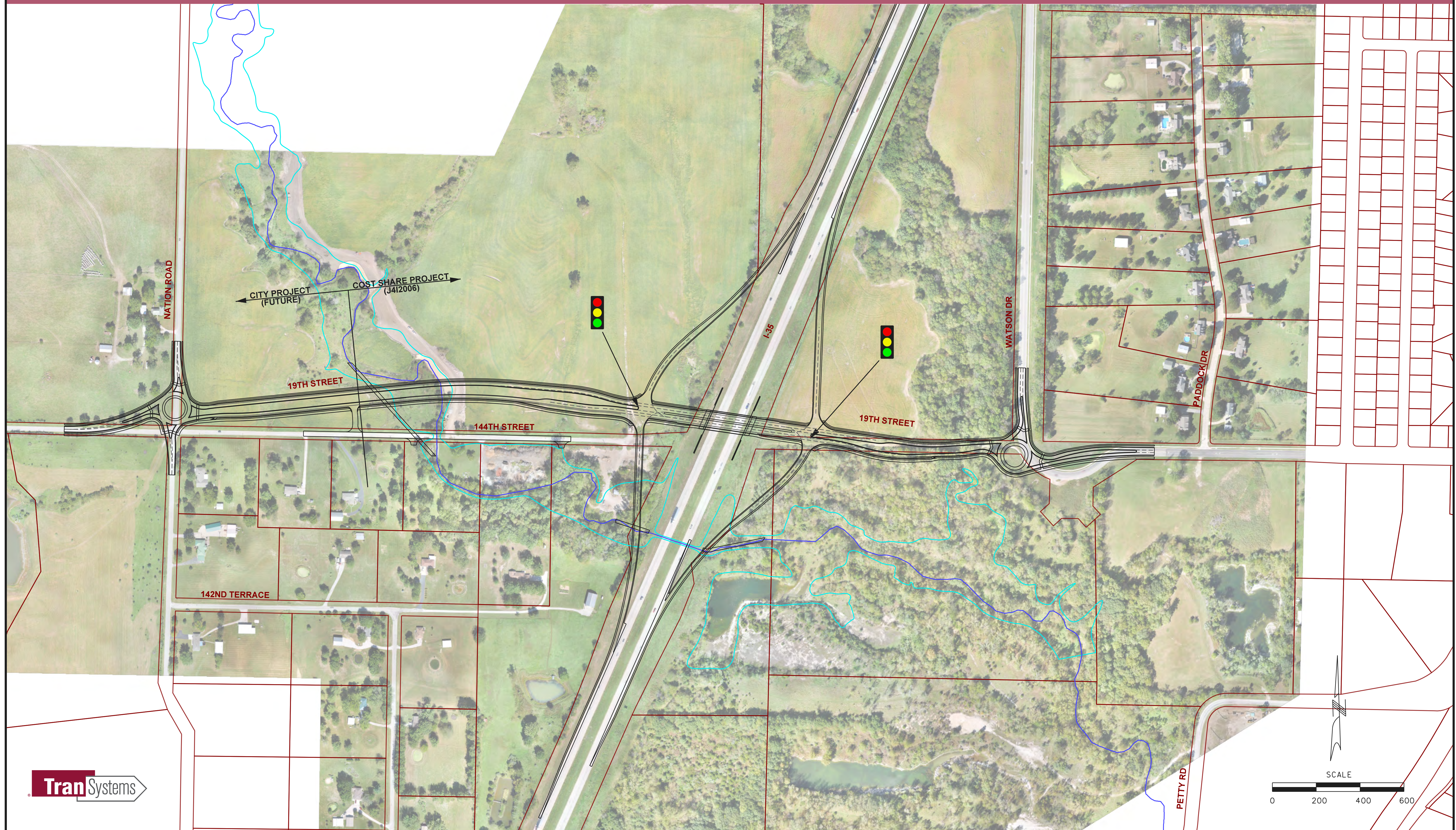


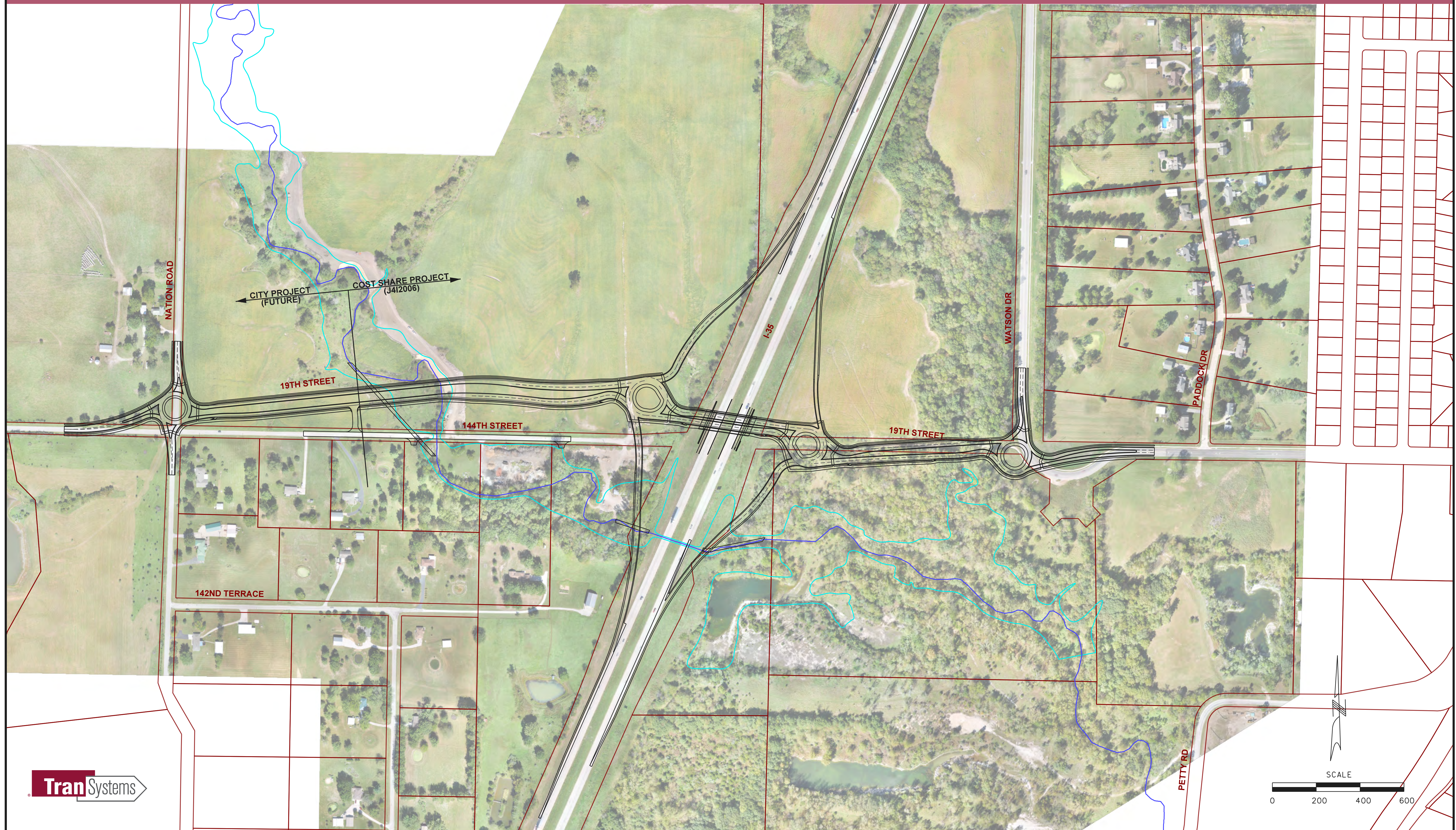
I-35 AND 19TH STREET INTERCHANGE



STANDARD DIAMOND CONCEPT (2040)

KEARNEY, MO

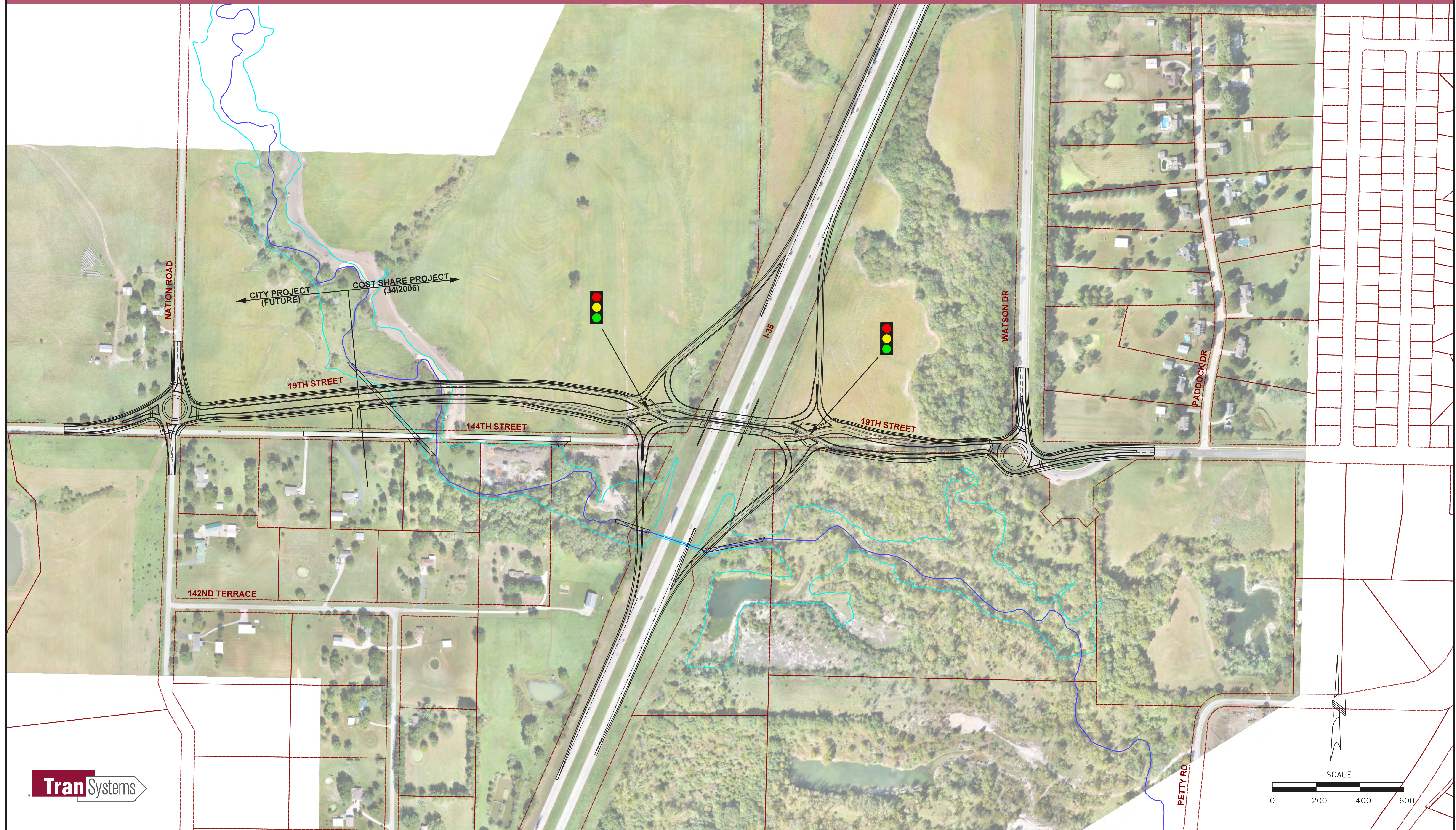
I-35 AND 19TH STREET INTERCHANGE



DIAMOND WITH ROUNDABOUTS CONCEPT (2040)

KEARNEY, MO

I-35 AND 19TH STREET INTERCHANGE



DIVERGING DIAMOND CONCEPT (2040)

KEARNEY, MO