

## Hydraulic Trailer Hitch



### Description

The Hydraulic Trailer Hitch latch works simultaneous with the hydraulic lever that operates the 2' dovetail. When loading or unloading equipment, employees must raise and lower the dove tail. This innovation will latch and unlatch automatically, so the operator doesn't have to manually latch or unlatch it. In the past, the factory latches have been broken. This eliminates the chance of operating the trailer in an unsafe manner.

### Benefit

This hitch improves safety and saves time by automatically latching or unlatching. The operator doesn't need to manually operate a latch. In addition, this hitch is stronger than the factory latch making it safer.

### Materials and Labor

#### Materials List:

1 - Hydraulic Cylinder \$60  
1 - Hydraulic Hose \$50  
1 - 1x4 inch Flat Steel \$65  
Total Materials Cost: \$175

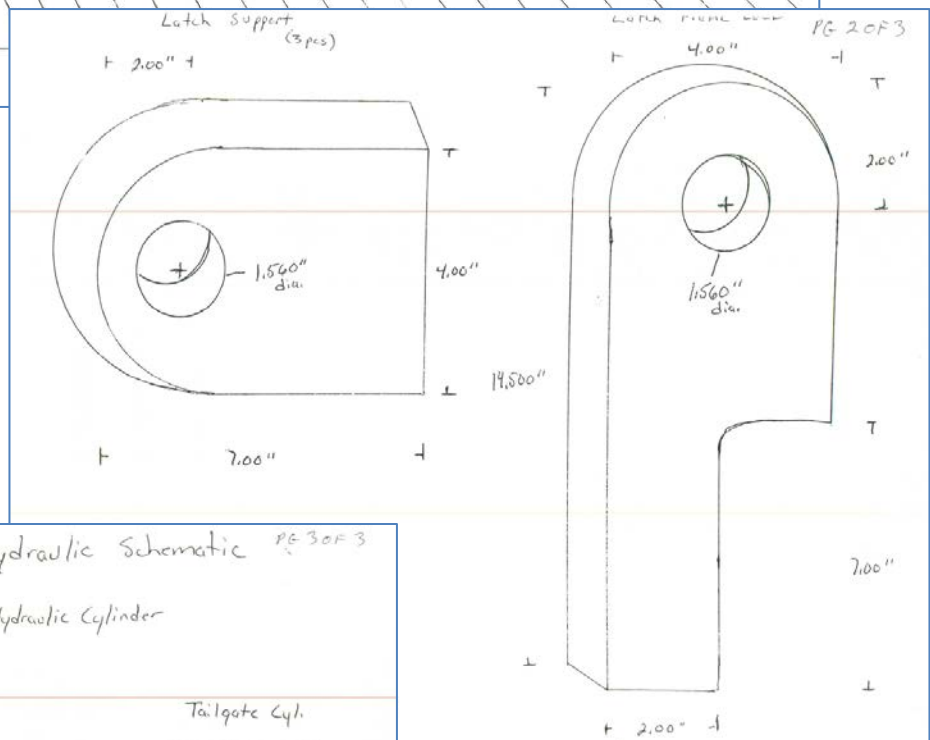
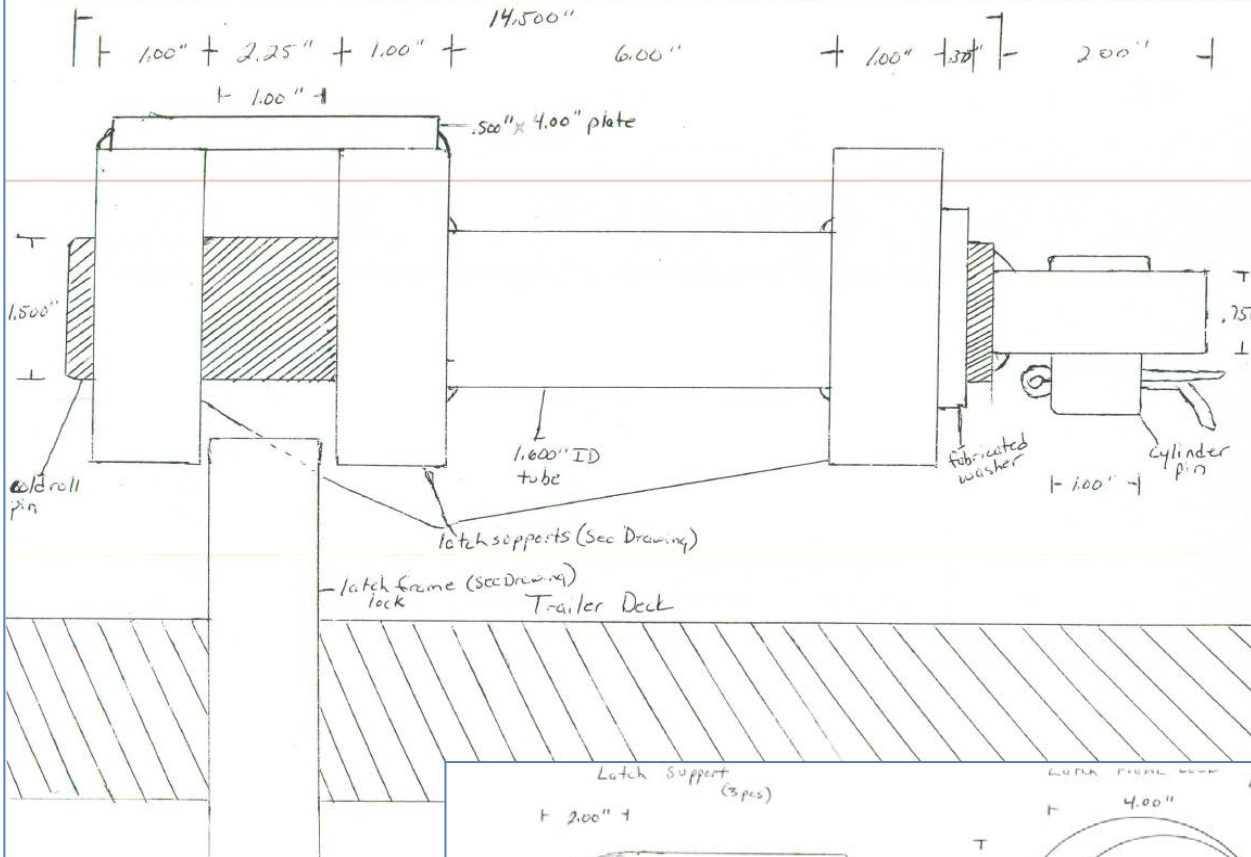
Labor: 6 hours

### For More Information Contact:

Scott Austin at [dennis.austin@modot.mo.gov](mailto:dennis.austin@modot.mo.gov) or (417) 326-5632.

Additional photos can be seen by accessing the Innovations Challenge SharePoint page at: <http://sharepoint/systemdelivery/TP/Documents/InnovationsChallenge.aspx>.

Trailer in raised position



Trailer Latch Hydraulic Schematic PG 3 of 3

Use 2" x 10" Hydraulic Cylinder

