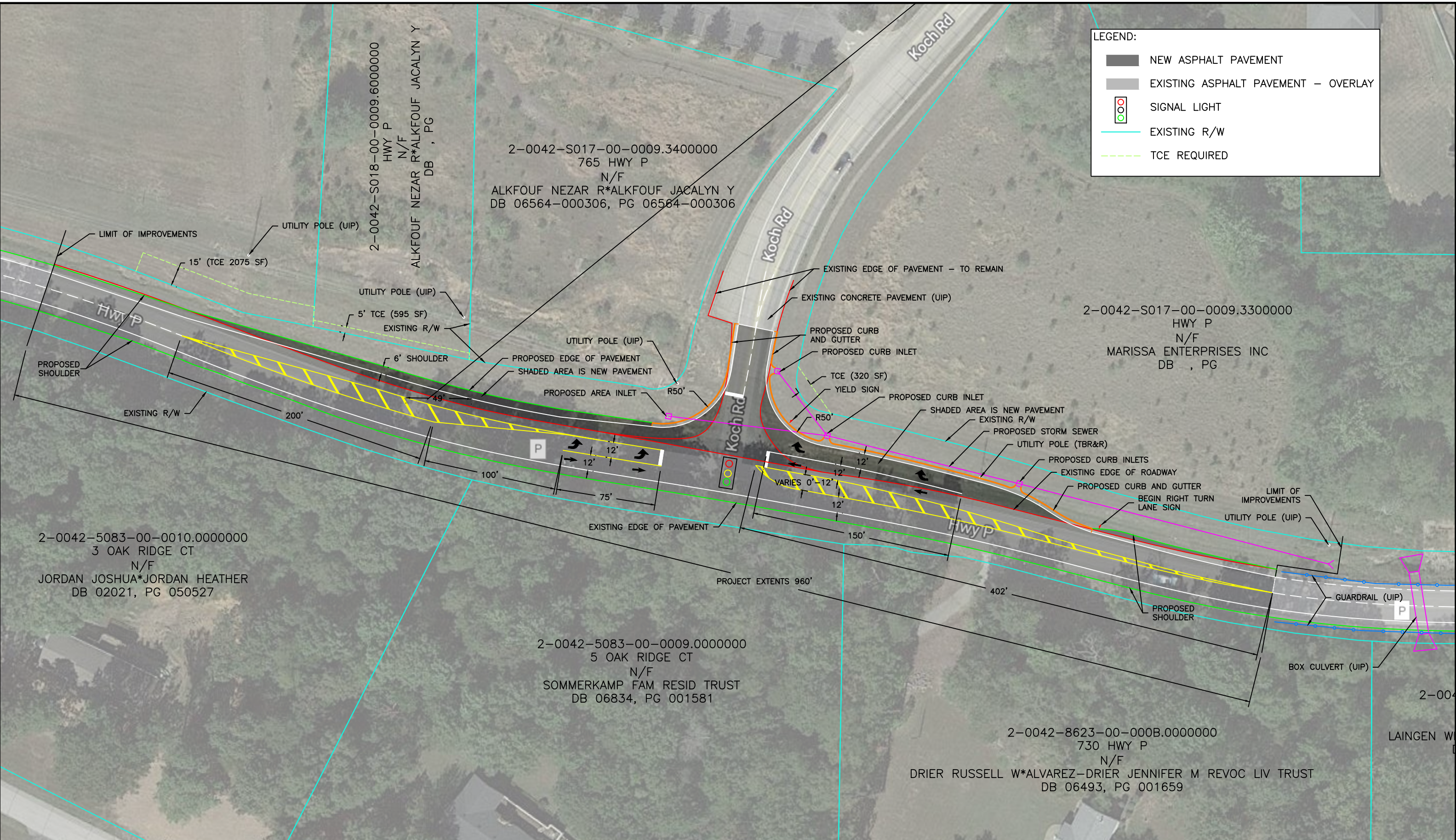


LEGEND:

- NEW ASPHALT PAVEMENT
- EXISTING ASPHALT PAVEMENT – OVERLAY
- SIGNAL LIGHT
- EXISTING R/W
- TCE REQUIRED



2-0042-5083-00-0010.0000000
 3 OAK RIDGE CT
 N/F
 JORDAN JOSHUA*JORDAN HEATHER
 DB 02021, PG 050527

2-0042-5083-00-0009.0000000
 5 OAK RIDGE CT
 N/F
 SOMMERKAMP FAM RESID TRUST
 DB 06834, PG 001581

2-0042-8623-00-000B.0000000
 730 HWY P
 N/F
 DRIER RUSSELL W*ALVAREZ-DRIER JENNIFER M REVOC LIV TRUST
 DB 06493, PG 001659

Oak Ridge Ct



EDSI
 ENGINEERING DESIGN SOURCE, INC.
 16141 Swingley Ridge Rd., Suite 300 T. 636 537 5585
 Chesterfield, Missouri 63017 F. 636 537 0275
 Missouri State Engineering Corporation #001523

PREPARED FOR: **MoDOT**

ROUTE P @ KOCH ROAD

CITY: O'FALLON COUNTY: ST. CHARLES STATE: MISSOURI

SIGNALIZED INTERSECTION OPTION

DATE: 1-26-22

SHEET NO
 1