

Missouri

HIGH-PRIORITY UNFUNDED NEEDS

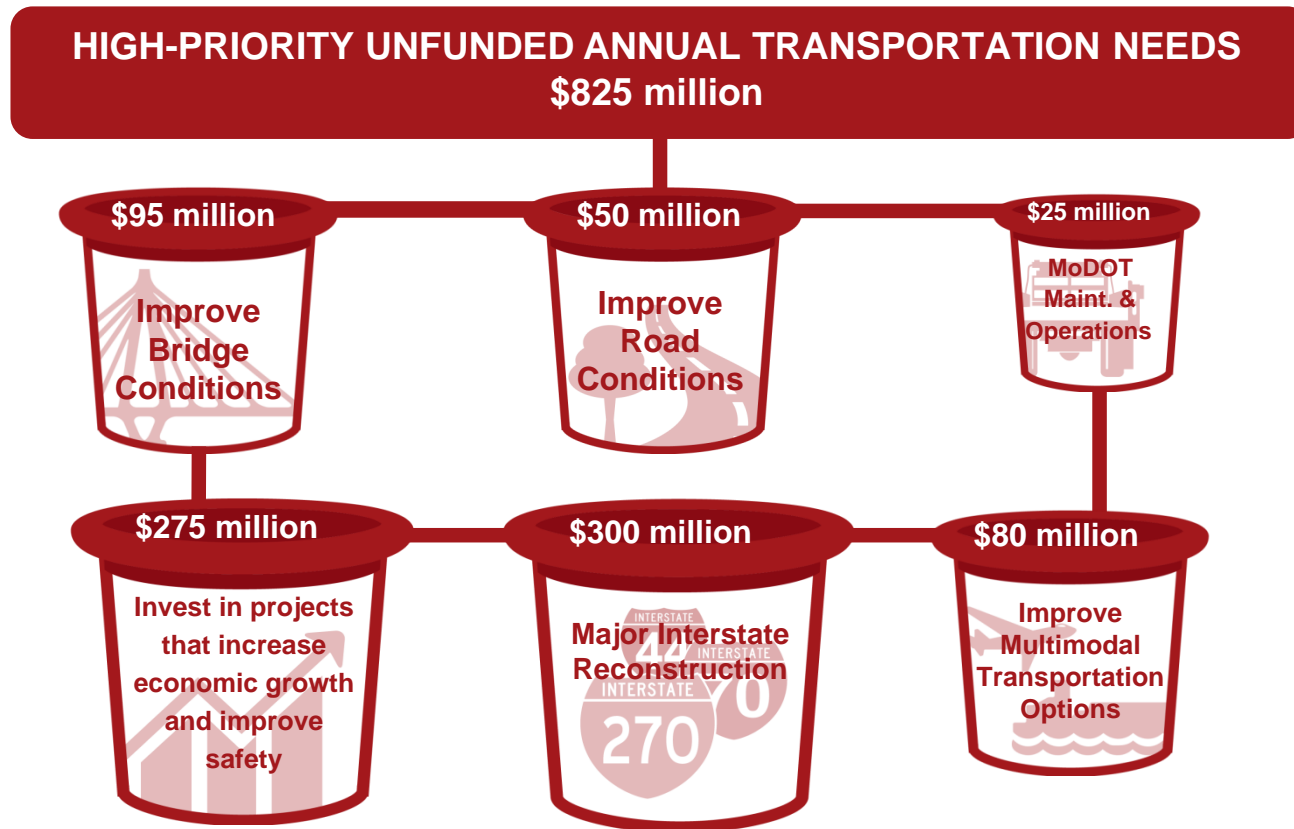


2019



INTRODUCTION

Missourians have repeatedly communicated the number one goal for MoDOT is to take care of the existing system of roads and bridges, so the majority of taxpayer dollars for transportation are invested in asset management projects. Current funding levels are only sufficient to maintain the transportation system in its current condition leaving many transportation needs unfunded. The Citizen's Guide to Transportation Funding identifies \$825 million of high-priority unfunded annual transportation needs under six categories, totaling \$8.25 billion over 10 years.



INTRODUCTION

\$95 million

**Improve
Bridge
Conditions**

Improve Bridge Conditions – Missouri has 10,384 bridges of varying sizes. Currently, 909 bridges, or 9%, are in poor condition. Investing an additional \$95 million each year for ten years would decrease the number of poor condition bridges to approximately 300, or 3% of the total bridges.

\$50 million

**Improve
Road
Conditions**

Improve Road Conditions – Missouri's state highway system consists of 33,838 miles, the seventh largest in the nation. The majority of travel occurs on the 5,543 miles of interstate and major routes – 92% of these routes are in good condition. Minor routes account for 17,126 miles of the system – 80% of these routes are in good condition. The low volume routes, which carry less than 400 cars per day, account for 11,170 miles – 74% of these routes are in good condition. Investing an additional \$50 million each year for ten years would preserve the current condition of interstate, major and minor routes and improve the condition of low volume routes from 74% to 80% good condition. The majority of the investment, \$40 million each year, is needed to improve and maintain low volume routes.

\$25 million

**MoDOT
Maint. &
Operations**

MoDOT Maintenance & Operations – MoDOT employs 3,000+ field employees throughout the state to operate and maintain the transportation system. Services include pavement repairs, winter operations and mowing roadsides. To continue the current level of service, an additional investment of \$25 million per year is needed to keep pace with inflationary cost increases.

INTRODUCTION

\$275 million

Invest in projects that increase economic growth and improve safety

Invest in projects that increase economic growth and improve safety – These projects include new interchanges, adding shoulders with rumble stripes and adding lanes to the current system. In addition to congestion reduction and economic growth benefits, all of these projects would improve safety so fewer fatalities and serious injuries occur. An additional investment of \$275 million per year would allow MoDOT to begin meeting those needs.

\$300 million

Major Interstate Reconstruction

Major interstate reconstruction – The nation's interstate system is over 60 years old, and Missouri's interstates were built with a 20-year life expectancy. Missouri's interstates need to be reconstructed with added capacity to reliably handle mounting levels of traffic, especially long-haul trucks. An additional \$300 million per year would allow MoDOT to begin tackling this long overdue improvement.

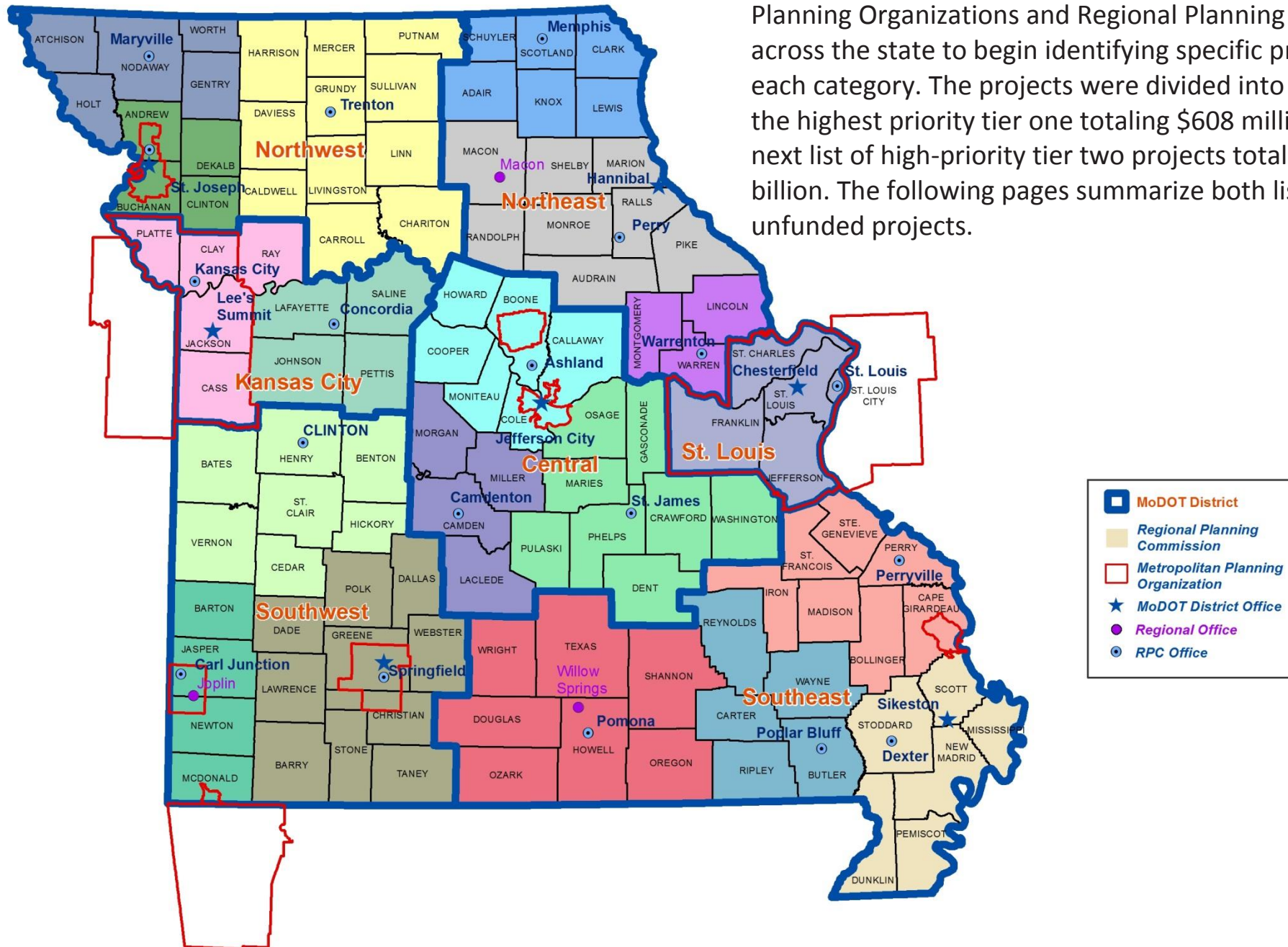
\$80 million

Improve Multimodal Transportation Options

Improve multimodal transportation options – Many Missourians rely on non-highway modes of transportation; however, the state currently invests very little money toward those needs. Missouri's transit systems, railroads, ports, waterways, airports and bicycle/pedestrian facilities could begin to see much needed improvements with an annual investment of \$80 million each year.

INTRODUCTION

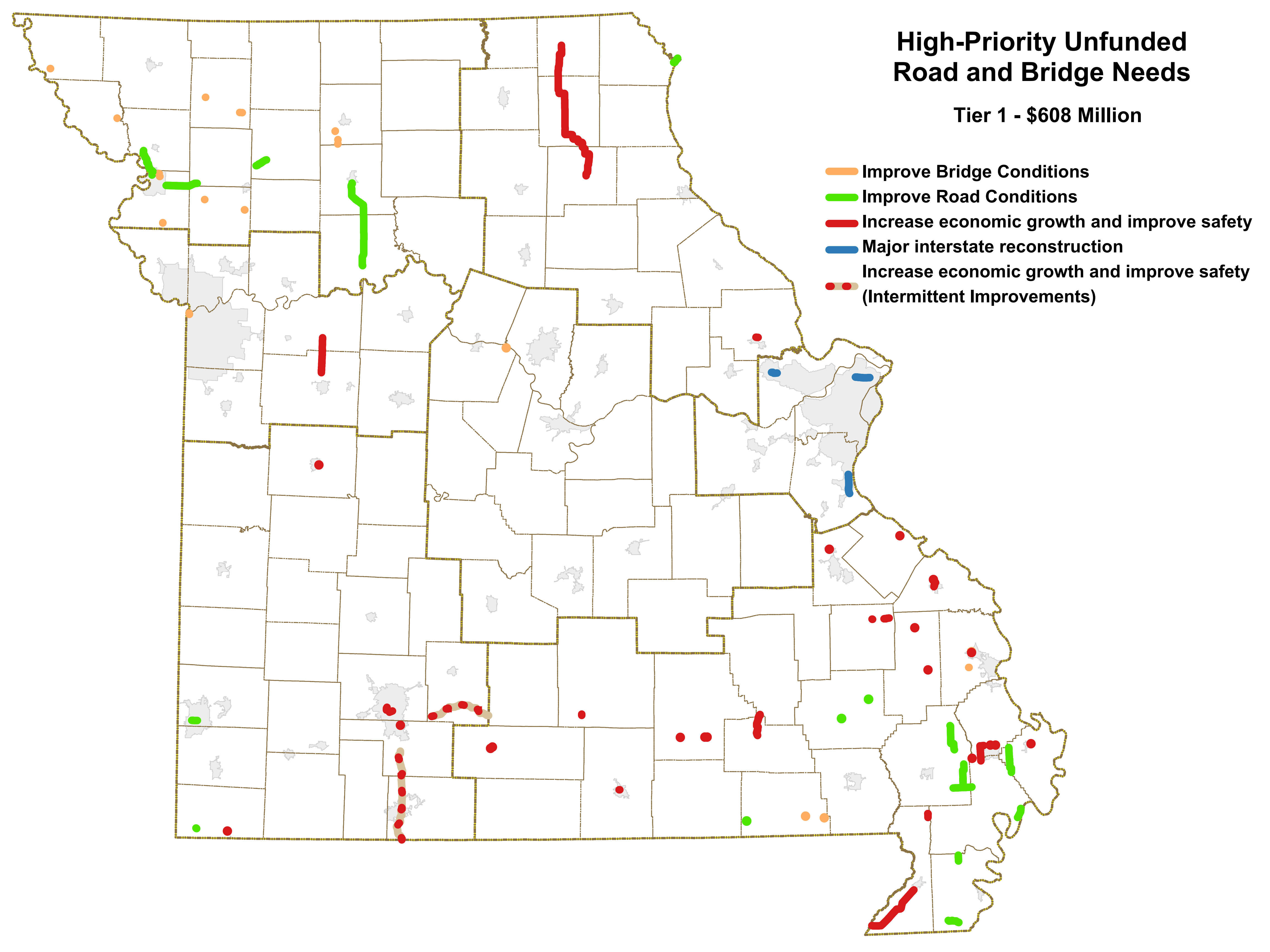
Throughout 2019, MoDOT collaborated with Metropolitan Planning Organizations and Regional Planning Commissions across the state to begin identifying specific projects within each category. The projects were divided into two tiers - the highest priority tier one totaling \$608 million and the next list of high-priority tier two projects totaling \$2.2 billion. The following pages summarize both lists of unfunded projects.



High-Priority Unfunded Road and Bridge Needs

Tier 1 - \$608 Million

- Improve Bridge Conditions
- Improve Road Conditions
- Increase economic growth and improve safety
- Major interstate reconstruction
- Increase economic growth and improve safety
(Intermittent Improvements)



Tier 1 - High-Priority Unfunded Road and Bridge Needs - 2019

District	County	Route	Project Description	Estimated Funding Needed (\$1,000)*	Citizen's Guide Unfunded Needs Category
Northwest	Buchanan	59	Pavement resurfacing from Rte. K to Krug Park and I-229 ramp.	\$1,007	Improve Road Conditions
Northwest	Andrew	K	Pavement resurfacing from I-29 to Rte. 59.	\$789	Improve Road Conditions
Northwest	Daviess	69	Pavement resurfacing from Rte. 6 to I-35.	\$308	Improve Road Conditions
Northwest	Grundy	W	Bridge replacement over Hickory Creek.	\$681	Improve Bridge Conditions
Northwest	Grundy	W	Bridge replacement over Gees Creek.	\$681	Improve Bridge Conditions
Northwest	Grundy	W	Bridge replacement over Wolf Creek.	\$603	Improve Bridge Conditions
Northwest	Livingston	C	Bridge replacement over Shoal Creek Drainage Ditch.	\$1,072	Improve Bridge Conditions
Northwest	Atchison	111	Bridge replacement over Pike Creek Drainage Ditch.	\$398	Improve Bridge Conditions
Northwest	Holt	B	Bridge replacement over Hickory Creek.	\$622	Improve Bridge Conditions
Northwest	Gentry	T	Bridge replacement over Brushy Creek.	\$494	Improve Bridge Conditions

* Amounts in 2019 Dollars (Uninflated)

Tier 1 - High-Priority Unfunded Road and Bridge Needs - 2019

District	County	Route	Project Description	Estimated Funding Needed (\$1,000)*	Citizen's Guide Unfunded Needs Category
Northwest	Gentry	T	Bridge replacement over Fitzgerald Branch.	\$283	Improve Bridge Conditions
Northwest	Livingston/Carroll	65	Pavement resurfacing from Rte. 36 to Rte. 24.	\$5,798	Improve Road Conditions
Northwest	Gentry	E	Bridge replacement over Walnut Fork.	\$747	Improve Bridge Conditions
Northwest	Buchanan	Y	Bridge replacement over Bee Creek.	\$520	Improve Bridge Conditions
Northwest	Buchanan	Y	Bridge replacement over Bee Creek.	\$559	Improve Bridge Conditions
Northwest	Clinton	NN	Bridge replacement over Castile Creek.	\$831	Improve Bridge Conditions
Northwest	Clinton	H	Bridge replacement over I-35.	\$1,710	Improve Bridge Conditions
Northwest	Buchanan	Cook Road	Bridge rehabilitation over I-29.	\$850	Improve Bridge Conditions
Northwest	Buchanan	Gene Field Road	Bridge rehabilitation over I-29.	\$850	Improve Bridge Conditions
Northwest	Buchanan/DeKalb	36	Pavement resurfacing eastbound lanes from east of Rte. AC to Rte. 31.	\$3,752	Improve Road Conditions

* Amounts in 2019 Dollars (Uninflated)

Tier 1 - High-Priority Unfunded Road and Bridge Needs - 2019

District	County	Route	Project Description	Estimated Funding Needed (\$1,000)*	Citizen's Guide Unfunded Needs Category
Northwest	Buchanan/DeKalb	36	Pavement resurfacing westbound lanes from east of Rte. AC to Rte. 31.	\$3,752	Improve Road Conditions
Northeast	Lincoln	47	Modify interchange configuration at Rte. 61 in Troy.	\$12,930	Increase economic growth and improve safety
Northeast	Clark	61	Raise road at Alexandria.	\$4,500	Improve Road Conditions
Northeast	Scotland/Knox	15	Add rumblestripes from Memphis to Edina.	\$2,570	Increase economic growth and improve safety
Northeast	Knox/Shelby	15	Add rumblestripes from Edina to Shelbyville.	\$3,660	Increase economic growth and improve safety
Kansas City Rural	Lafayette/ Johnson	13	Corridor and safety improvements from I-70 to north of Warrensburg.	\$12,495	Increase economic growth and improve safety
Kansas City Urban	Jackson	169	Bridge improvements over the Missouri River in Kansas City on the Buck O'Neil bridge.	\$78,000	Improve Bridge Conditions
Central	Cooper	I-70	Bridge replacement over the Missouri River at Rocheport.	\$240,000	Improve Bridge Conditions
St. Louis	St. Louis	I-270	Corridor and interchange improvements from I-70 to Chain of Rocks Bridge (Partial)	\$19,000	Major interstate reconstruction
St. Louis	St. Charles	I-70	Add lanes and pavement resurfacing from Rte. Z to Wentzville Parkway.	\$36,000	Major interstate reconstruction

* Amounts in 2019 Dollars (Uninflated)

Tier 1 - High-Priority Unfunded Road and Bridge Needs - 2019

District	County	Route	Project Description	Estimated Funding Needed (\$1,000)*	Citizen's Guide Unfunded Needs Category
St. Louis	Jefferson	I-55	Add lanes, bridge improvements, interchange improvements and pavement resurfacing from Rte. Z to Rte. 67. (Partial)	\$78,000	Major interstate reconstruction
Southwest Rural	Jasper	66	Pavement improvements and upgrade pedestrian facilities to comply with the ADA Transition Plan from Maiden Lane to Main Street in Joplin.	\$8,638	Improve Road Conditions
Southwest Rural	Jasper	66	Pavement improvements and upgrade pedestrian facilities to comply with the ADA Transition Plan from Main Street to St. Louis Avenue in Joplin.	\$8,223	Improve Road Conditions
Southwest Rural	Webster	60	Safety, capital improvements and intersection improvements from Rogersville to east of Seymour.	\$5,000	Increase economic growth and improve safety
Southwest Rural	McDonald	59/90	Streambank and pedestrian improvements in Noel.	\$4,146	Improve Road Conditions
Southwest Rural	Christian/Taney	65	Safety and intersection improvements from Rte. EE near Ozark to the Arkansas State line.	\$4,000	Increase economic growth and improve safety
Southwest Rural	Henry	13	Intersection and pavement improvements at Rte. 7, Rte. 18 and Rte. 52 (Ohio St. and Route 13) in Clinton.	\$3,250	Increase economic growth and improve safety
Southwest Rural	McDonald	71	Intersection improvements at Rains Road in Jane.	\$550	Increase economic growth and improve safety
Southwest Urban	Greene	60	Add lanes from Campbell Avenue to National Avenue in Springfield.	\$11,092	Increase economic growth and improve safety
Southwest Urban	Greene	13	Capital improvements from Battlefield Road to Rte. 60 (James River Freeway).	\$7,772	Increase economic growth and improve safety

* Amounts in 2019 Dollars (Uninflated)

Tier 1 - High-Priority Unfunded Road and Bridge Needs - 2019

District	County	Route	Project Description	Estimated Funding Needed (\$1,000)*	Citizen's Guide Unfunded Needs Category
Southwest Urban	Christian	CC	Intersection improvements at 22nd Street in Ozark.	\$1,500	Increase economic growth and improve safety
Southwest Urban	Greene	Various	Arterial operational improvements in Springfield.	\$1,000	Increase economic growth and improve safety
Southeast	Cape Girardeau	61	Bridge replacement over Hubble Creek.	\$2,350	Improve Bridge Conditions
Southeast	Ripley	142	Bridge replacement over Harris Creek.	\$806	Improve Bridge Conditions
Southeast	Ripley	142	Bridge replacement over Ditch #2.	\$496	Improve Bridge Conditions
Southeast	Shannon	60	Intersection improvements at Rte. 99.	\$616	Increase economic growth and improve safety
Southeast	Shannon	60	Intersection improvements at the east intersection of Rte. 19.	\$616	Increase economic growth and improve safety
Southeast	Shannon	60	Intersection improvements at the west intersection of Rte. 19.	\$616	Increase economic growth and improve safety
Southeast	Ste. Genevieve	61	Intersection improvements at Industrial River Road.	\$877	Increase economic growth and improve safety
Southeast	Scott	HH	Intersection improvements at Ingram Road.	\$585	Increase economic growth and improve safety

* Amounts in 2019 Dollars (Uninflated)

Tier 1 - High-Priority Unfunded Road and Bridge Needs - 2019

District	County	Route	Project Description	Estimated Funding Needed (\$1,000)*	Citizen's Guide Unfunded Needs Category
Southeast	Scott	HH	Intersection improvements at Rte. H.	\$292	Increase economic growth and improve safety
Southeast	Dunklin	412	Scoping for adding lanes to provide four lane highway from Rte. AC to Rte. O.	\$1,000	Increase economic growth and improve safety
Southeast	Bollinger	34	Intersection improvements at Rte. B.	\$585	Increase economic growth and improve safety
Southeast	Howell	160	Capital improvements from Rte. 63 to Bus. 63.	\$3,155	Increase economic growth and improve safety
Southeast	Carter	D	Pavement improvements and add rumblestrips from Reynolds County Road 631 to Bus. 60.	\$2,131	Increase economic growth and improve safety
Southeast	Cape Girardeau	61	Intersection improvements at Mary Street in Jackson.	\$2,070	Increase economic growth and improve safety
Southeast	Wayne	A	Culvert replacement 0.5 miles west of Rte. 67.	\$585	Improve Road Conditions
Southeast	Douglas	14	Intersection improvements at North Jefferson Avenue in Ava.	\$1,287	Increase economic growth and improve safety
Southeast	Madison	72	Intersection improvements from Chamber Drive to Sargent Drive in Fredericktown.	\$578	Increase economic growth and improve safety
Southeast	Stoddard	N	Pavement improvements from Rte. 91 to Rte. AB.	\$535	Improve Road Conditions

* Amounts in 2019 Dollars (Uninflated)

Tier 1 - High-Priority Unfunded Road and Bridge Needs - 2019

District	County	Route	Project Description	Estimated Funding Needed (\$1,000)*	Citizen's Guide Unfunded Needs Category
Southeast	Scott	ZZ	Pavement improvements and add rumblestripes from Rte. BB to Rte. 61.	\$439	Increase economic growth and improve safety
Southeast	Scott	BB	Pavement improvements and add rumblestripes from Rte. ZZ to Bus. 60.	\$1,254	Increase economic growth and improve safety
Southeast	New Madrid	Bus 60	Pavement improvements and add rumblestripes from Rte. 60 to Rte. BB.	\$439	Increase economic growth and improve safety
Southeast	Perry	61	Intersection improvements at Rte. AC.	\$585	Increase economic growth and improve safety
Southeast	Douglas	5	Intersection improvements at Rte Y.	\$544	Increase economic growth and improve safety
Southeast	Texas	181	Intersection improvements from Main Street to Rte. 60 in Cabool.	\$645	Increase economic growth and improve safety
Southeast	Cape Girardeau	Z	Bridge replacements over Hubble Creek Overflow and Hubble Creek.	\$2,480	Improve Bridge Conditions
Southeast	Pemiscot	E	Pavement improvements from Rte. 61 to County Road 568.	\$268	Improve Road Conditions
Southeast	Mississippi	62	Intersection improvements at I-57.	\$1,849	Increase economic growth and improve safety
Southeast	St. Francois	K	Intersection improvements at North Wood Drive in Bonne Terre.	\$1,754	Increase economic growth and improve safety

* Amounts in 2019 Dollars (Uninflated)

Tier 1 - High-Priority Unfunded Road and Bridge Needs - 2019

District	County	Route	Project Description	Estimated Funding Needed (\$1,000)*	Citizen's Guide Unfunded Needs Category
Southeast	Ripley	142	Culvert replacement 0.1 miles west of Rte. V.	\$585	Improve Road Conditions
Southeast	Wayne	C	Culvert replacement 1 mile north of Rte. E.	\$1,170	Improve Road Conditions
Southeast	Perry	51	Intersection improvements from Old St. Mary Road to Brenda Avenue.	\$1,155	Increase economic growth and improve safety
Southeast	New Madrid	AB	Pavement improvements from Rte. WW to the end of state maintenance.	\$241	Improve Road Conditions
Southeast	New Madrid	Z	Intersection improvements at County Road 480 in New Madrid County.	\$187	Increase economic growth and improve safety
Southeast	Madison	J	Safety improvements from County Road 250 to Rte. W.	\$1,754	Increase economic growth and improve safety
Southeast	Bollinger	51	Intersection improvements at Rte. 72.	\$1,170	Increase economic growth and improve safety
Southeast	Dunklin	Bus 25	Intersection improvements from Rte. 25 south to Broadwater Road in Malden.	\$867	Increase economic growth and improve safety
Southeast	Pemiscot	CC	Pavement improvements from the beginning of state maintenance to Rte. A.	\$171	Improve Road Conditions
Southeast	Stoddard	CC	Pavement improvements from Rte. 114 to Rte. A.	\$642	Improve Road Conditions

* Amounts in 2019 Dollars (Uninflated)

Tier 1 - High-Priority Unfunded Road and Bridge Needs - 2019

District	County	Route	Project Description	Estimated Funding Needed (\$1,000)*	Citizen's Guide Unfunded Needs Category
Southeast	Mississippi	B	Pavement improvements and add rumblestripes from Rte. 62 to Rte. 80.	\$1,467	Improve Road Conditions
Southeast	Stoddard	A	Pavement improvements from Rte. 153 to County Road 629 in New Madrid County.	\$455	Improve Road Conditions
Tier 1 Statewide Total:				\$607,934	

* Amounts in 2019 Dollars (Uninflated)

SUMMARY

Tier 1 High-Priority Unfunded Road and Bridge Needs - 2019

Amounts in Thousands (2019 Dollars-Uninflated)

District	Improve Bridge Conditions	Improve Road Conditions	Major Interstate Reconstruction	Increase Economic Growth and Improve Safety	Total
Northwest	\$10,901	\$15,406	-	-	\$26,307
Northeast	-	\$4,500	-	\$19,160	\$23,660
Kansas City Rural	-	-	-	\$12,495	\$12,495
Kansas City Urban	\$78,000	-	-	-	\$78,000
Central	\$240,000	-	-	-	\$240,000
St. Louis	-	-	\$133,000	-	\$133,000
Southwest Rural	-	\$21,007	-	\$12,800	\$33,807
Southwest Urban	-	-	-	\$21,364	\$21,364
Southeast	\$6,132	\$6,119	-	\$27,050	\$39,301
Total	\$335,033	\$47,032	\$133,000	\$92,869	\$607,934

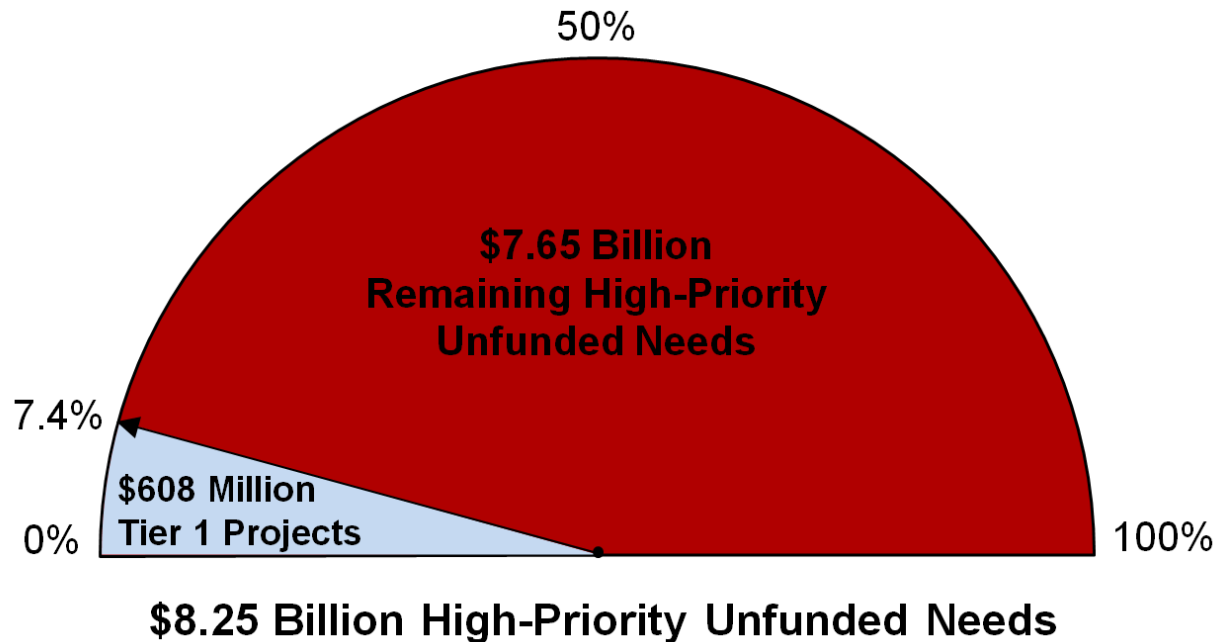
SUMMARY

If funded, the tier 1 projects would improve safety and provide the following impacts in Missouri:

Category	Impact
Improved Road Condition	113 Miles
Improved Bridge Condition	23 Bridges*
Major Interstate Reconstruction	8 Miles
20-Year Economic Output	\$1.5 Billion
Annual Jobs Created	484 Jobs

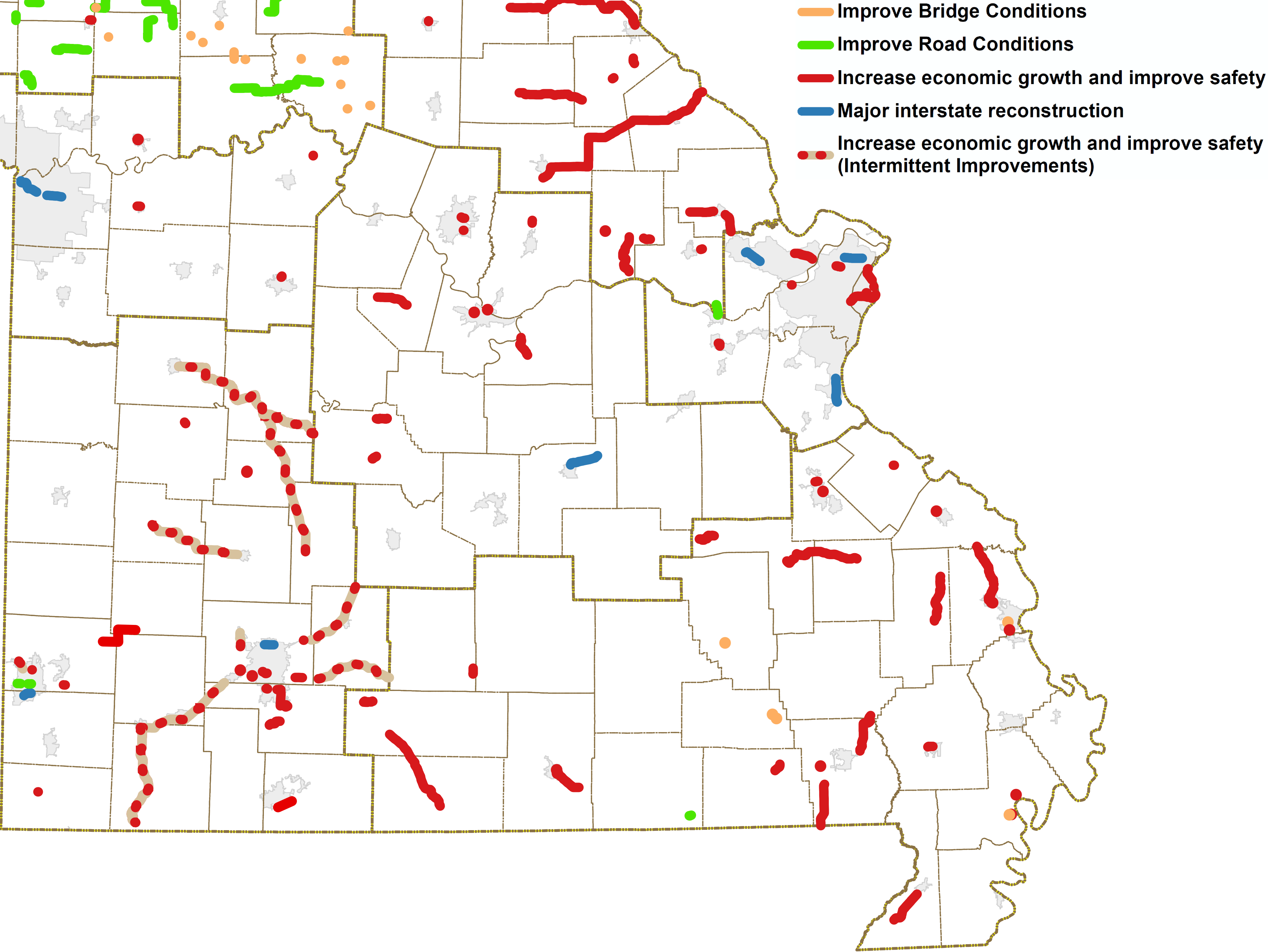
*Includes two major bridges – the I-70 bridge over the Missouri River near Rocheport and the US 169 Buck O’Neil Bridge over the Missouri River in Kansas City.

The \$608 million of tier 1 projects would complete 7.4% of the \$8.25 billion of high-priority unfunded needs across the state.



High-Priority Unfunded Road and Bridge Needs

Tier 2 - \$2.2 Billion



Tier 2 - High-Priority Unfunded Road and Bridge Needs - 2019

District	County	Route	Project Description	Estimated Funding Needed (\$1,000)*	Citizen's Guide Unfunded Needs Category
Northwest	Andrew/Buchanan	169	Pavement resurfacing from Rte. 31 to I-29.	\$1,609	Improve Road Conditions
Northwest	Buchanan	116	Pavement resurfacing from Rte. 59 to Rte. 371.	\$1,150	Improve Road Conditions
Northwest	Carroll/Chariton	M	Pavement resurfacing from Rte. 65 to Rte. F.	\$1,817	Improve Road Conditions
Northwest	Harrison	MM	Pavement resurfacing from Rte. 13 to Rte. CC.	\$797	Improve Road Conditions
Northwest	Mercer	D	Pavement resurfacing from Rte. 136 to Rte. 65.	\$810	Improve Road Conditions
Northwest	Daviess	190	Pavement resurfacing from Rte. 6 to Rte. 146.	\$751	Improve Road Conditions
Northwest	Buchanan/Clinton	116	Pavement resurfacing from Rte. 371 to Rte. 169.	\$1,150	Improve Road Conditions
Northwest	Gentry/DeKalb	169	Pavement resurfacing from Stanberry north city limits to Rte. 31.	\$1,380	Improve Road Conditions
Northwest	Nodaway/ Andrew	Y	Pavement resurfacing from Nodaway County line to Rte. 71.	\$1,025	Improve Road Conditions
Northwest	Andrew	CC	Pavement resurfacing from Rte. K to Rte. 59.	\$265	Improve Road Conditions

* Amounts in 2019 Dollars (Uninflated)

Tier 2 - High-Priority Unfunded Road and Bridge Needs - 2019

District	County	Route	Project Description	Estimated Funding Needed (\$1,000)*	Citizen's Guide Unfunded Needs Category
Northwest	Atchison	B	Pavement resurfacing from Rte. A to Rte. 59.	\$1,025	Improve Road Conditions
Northwest	Nodaway	C	Pavement resurfacing from Rte. 71 to Rte. UU.	\$577	Improve Road Conditions
Northwest	Nodaway	PP	Pavement resurfacing from Rte. 136 to Rte. 46.	\$523	Improve Road Conditions
Northwest	Holt	C	Pavement resurfacing from Rte. 59 to Rte. 113.	\$998	Improve Road Conditions
Northwest	Nodaway	NN	Bridge replacement over Platte River.	\$1,608	Improve Bridge Conditions
Northwest	Worth	46	Bridge replacement over Marlowe Branch.	\$838	Improve Bridge Conditions
Northwest	Worth	W	Bridge replacement over West Fork Grand River.	\$1,685	Improve Bridge Conditions
Northwest	Livingston	65	Bridge replacement over Shoal Creek Overflow.	\$3,267	Improve Bridge Conditions
Northwest	Carroll	65	Bridge replacement over Mound Creek.	\$1,431	Improve Bridge Conditions
Northwest	Atchison	275	Bridge replacement over East Fork High Creek.	\$1,076	Improve Bridge Conditions

* Amounts in 2019 Dollars (Uninflated)

Tier 2 - High-Priority Unfunded Road and Bridge Needs - 2019

District	County	Route	Project Description	Estimated Funding Needed (\$1,000)*	Citizen's Guide Unfunded Needs Category
Northwest	Livingston	C	Bridge replacement over Shoal Creek.	\$1,048	Improve Bridge Conditions
Northwest	Nodaway	VV	Bridge replacement over Platte River.	\$2,024	Improve Bridge Conditions
Northwest	Sullivan	E	Bridge replacement over West Locust Creek.	\$716	Improve Bridge Conditions
Northwest	Worth	A	Bridge replacement over Stream.	\$177	Improve Bridge Conditions
Northwest	Carroll	J	Bridge replacement over Bridge Creek.	\$610	Improve Bridge Conditions
Northwest	Livingston	D	Bridge replacement over Rattlesnake Creek.	\$746	Improve Bridge Conditions
Northwest	Buchanan	I-29	Interchange improvements at Rte. 169.	\$23,000	Increase economic growth and improve safety
Northwest	DeKalb	36	Interchange improvements at I-35.	\$6,250	Increase economic growth and improve safety
Northwest	Mercer	E	Bridge replacement over West Honey Creek.	\$638	Improve Bridge Conditions
Northwest	Mercer	D	Bridge replacement over Muddy Creek.	\$556	Improve Bridge Conditions

* Amounts in 2019 Dollars (Uninflated)

Tier 2 - High-Priority Unfunded Road and Bridge Needs - 2019

District	County	Route	Project Description	Estimated Funding Needed (\$1,000)*	Citizen's Guide Unfunded Needs Category
Northwest	Sullivan	T	Bridge replacement over East Locust Creek.	\$627	Improve Bridge Conditions
Northwest	Chariton	PP	Bridge replacement over Middle Fork Chariton River.	\$892	Improve Bridge Conditions
Northwest	Chariton	CC	Bridge replacement over Yellow Creek.	\$1,131	Improve Bridge Conditions
Northwest	Putnam	E	Pavement resurfacing from Rte. M to Rte. 136.	\$812	Improve Road Conditions
Northwest	Sullivan	K	Pavement resurfacing from Rte. EE to Rte. E.	\$356	Improve Road Conditions
Northwest	Livingston/Grundy	K	Pavement resurfacing from Rte. 65 to Rte. E.	\$874	Improve Road Conditions
Northwest	Grundy/Linn	E	Pavement resurfacing from Rte. 6 to Rte. 139.	\$786	Improve Road Conditions
Northwest	Linn	Y	Pavement resurfacing from Rte. 139 to Rte. DD.	\$1,022	Improve Road Conditions
Northwest	Chariton	D	Bridge replacement over Clark Branch.	\$1,026	Improve Bridge Conditions
Northwest	Chariton	D	Bridge replacement over Mussel Fork Creek.	\$932	Improve Bridge Conditions

* Amounts in 2019 Dollars (Uninflated)

Tier 2 - High-Priority Unfunded Road and Bridge Needs - 2019

District	County	Route	Project Description	Estimated Funding Needed (\$1,000)*	Citizen's Guide Unfunded Needs Category
Northwest	Daviess	190	Bridge replacement over Clear Creek.	\$1,202	Improve Bridge Conditions
Northwest	Harrison	69	Bridge replacement over Zadio Branch.	\$273	Improve Bridge Conditions
Northwest	Harrison	D	Bridge replacement over Ames Creek.	\$392	Improve Bridge Conditions
Northwest	Linn	B	Bridge replacement over Smokey Branch.	\$493	Improve Bridge Conditions
Northwest	Buchanan	AC	Bridge rehabilitation and interchange improvements at Rte. 36.	\$12,500	Increase economic growth and improve safety
Northwest	Worth	Y	Pavement resurfacing from Rte. 46 to the end of state maintenance.	\$310	Improve Road Conditions
Northwest	Worth	PP	Pavement resurfacing from Rte. 169 to the end of state maintenance.	\$197	Improve Road Conditions
Northwest	Worth	M	Pavement resurfacing from Rte. 169 to Rte. C.	\$503	Improve Road Conditions
Northwest	Worth	O	Pavement resurfacing from Iowa State line to Rte. T.	\$362	Improve Road Conditions
Northwest	Worth/Gentry	N	Pavement resurfacing from Rte. M to Rte. 136.	\$790	Improve Road Conditions

* Amounts in 2019 Dollars (Uninflated)

Tier 2 - High-Priority Unfunded Road and Bridge Needs - 2019

District	County	Route	Project Description	Estimated Funding Needed (\$1,000)*	Citizen's Guide Unfunded Needs Category
Northwest	Worth/Gentry	U	Pavement resurfacing from Rte. W to Rte. O.	\$573	Improve Road Conditions
Northwest	Linn	C	Bridge replacement over Long Branch.	\$996	Improve Bridge Conditions
Northwest	Linn	WW	Bridge replacement over Van Dorsen Creek.	\$483	Improve Bridge Conditions
Northwest	Putnam	N	Bridge replacement over Turkey Creek.	\$550	Improve Bridge Conditions
Northwest	Putnam	M	Bridge replacement over Medicine Creek Fork.	\$583	Improve Bridge Conditions
Northwest	Sullivan	PP	Bridge replacement over West Locust Creek.	\$820	Improve Bridge Conditions
Northwest	Buchanan	H	Bridge replacement over Platte River Overflow.	\$650	Improve Bridge Conditions
Northwest	Caldwell/Daviess	M	Pavement resurfacing from Rte. 36 to Rte. 13.	\$901	Improve Road Conditions
Northwest	Caldwell	B	Pavement resurfacing from Nettleton city limits to Rte. U.	\$402	Improve Road Conditions
Northwest	DeKalb	O	Pavement resurfacing from Rte. N to Rte. 31.	\$203	Improve Road Conditions

* Amounts in 2019 Dollars (Uninflated)

Tier 2 - High-Priority Unfunded Road and Bridge Needs - 2019

District	County	Route	Project Description	Estimated Funding Needed (\$1,000)*	Citizen's Guide Unfunded Needs Category
Northwest	Gentry/DeKalb	D	Pavement resurfacing from Rte. Z to Rte. 6.	\$671	Improve Road Conditions
Northwest	Daviess	BB	Pavement resurfacing from Rte. 69 to Rte. 69.	\$474	Improve Road Conditions
Northwest	Caldwell	U	Bridge replacement over Shoal Creek.	\$1,415	Improve Bridge Conditions
Northwest	Chariton	5	Bridge replacement over Cottonwood Creek.	\$893	Improve Bridge Conditions
Northwest	Chariton	KK	Bridge replacement over Puzzle Creek.	\$673	Improve Bridge Conditions
Northwest	Daviess	BB	Bridge replacement over I-35.	\$1,781	Improve Bridge Conditions
Northwest	Grundy	N	Bridge replacement over No Creek.	\$536	Improve Bridge Conditions
Northwest	Andrew	I-29	Interchange improvements at Rte. 71.	\$6,250	Increase economic growth and improve safety
Northwest	Buchanan	KK	Pavement resurfacing from west Rte. 59 to east Rte. 59.	\$280	Improve Road Conditions
Northwest	Buchanan	AB	Pavement resurfacing from Rte. 6 to Rte. 36.	\$110	Improve Road Conditions

* Amounts in 2019 Dollars (Uninflated)

Tier 2 - High-Priority Unfunded Road and Bridge Needs - 2019

District	County	Route	Project Description	Estimated Funding Needed (\$1,000)*	Citizen's Guide Unfunded Needs Category
Northwest	Buchanan	CC	Pavement resurfacing from Rte. 371 to Rte. 116.	\$360	Improve Road Conditions
Northwest	Clinton	H	Pavement resurfacing from Rte. 33 to Rte. 69.	\$595	Improve Road Conditions
Northwest	Clinton	O	Pavement resurfacing from Rte. 169 to the end of state maintenance.	\$394	Improve Road Conditions
Northeast	Lincoln	47	Add shoulders from Troy to Hawk Point.	\$13,200	Increase economic growth and improve safety
Northeast	Montgomery	19	Add shoulders from I-70 to McKittrick.	\$1,330	Increase economic growth and improve safety
Northeast	Monroe/Ralls	154	Add shoulders from Paris to Perry.	\$2,080	Increase economic growth and improve safety
Northeast	Shelby/Marion	168	Add shoulders from Shelbyville to Hannibal.	\$4,610	Increase economic growth and improve safety
Northeast	Montgomery	I-70	Add lanes at Mineola Hill.	\$8,850	Increase economic growth and improve safety
Northeast	Macon	63	Interchange improvements at Rte. 36 in Macon.	\$2,340	Increase economic growth and improve safety
Northeast	Ralls	61	Safety improvements at Rte. A.	\$2,400	Increase economic growth and improve safety

* Amounts in 2019 Dollars (Uninflated)

Tier 2 - High-Priority Unfunded Road and Bridge Needs - 2019

District	County	Route	Project Description	Estimated Funding Needed (\$1,000)*	Citizen's Guide Unfunded Needs Category
Northeast	Ralls	19	Add turn lanes at Mark Twain Schools near Center.	\$700	Increase economic growth and improve safety
Northeast	Knox	6	Add turn lanes at schools and nursing home near Edina.	\$820	Increase economic growth and improve safety
Northeast	Lewis	6	Add turn lanes at Highland High School near Ewing.	\$590	Increase economic growth and improve safety
Northeast	Adair	Bus 63	Add lanes from Brewington to Rte. 6.	\$1,790	Increase economic growth and improve safety
Northeast	Audrain/Ralls/Pike	54	Scoping for adding lanes from Mexico to Louisiana.	\$200	Increase economic growth and improve safety
Northeast	Warren	47	Hydraulic study for causeway north of Washington.	\$300	Improve Road Conditions
Northeast	Warren	I-70	Add interchange at Stracks Church Road.	\$18,000	Increase economic growth and improve safety
Northeast	Lincoln	61	Construct new outer road from South Lincoln Drive in Troy to Rte. C.	\$4,080	Increase economic growth and improve safety
Northeast	Lincoln	61	Construct remaining new outer roads from South Lincoln Drive in Troy to St. Charles County on disconnected sections.	\$14,400	Increase economic growth and improve safety
Northeast	Warren	I-70	Add railroad overpass near High Hill.	\$37,300	Increase economic growth and improve safety

* Amounts in 2019 Dollars (Uninflated)

Tier 2 - High-Priority Unfunded Road and Bridge Needs - 2019

District	County	Route	Project Description	Estimated Funding Needed (\$1,000)*	Citizen's Guide Unfunded Needs Category
Northeast	Marion/Ralls	61	Update Hannibal Expressway study.	\$500	Increase economic growth and improve safety
Kansas City Rural	Pettis	65	Construct new interchange north of Rte. 765 for truck route to Rte. 50 in Sedalia.	\$30,940	Increase economic growth and improve safety
Kansas City Rural	Lafayette	I-70	Interchange improvements at Rte. 131 in Odessa.	\$24,476	Increase economic growth and improve safety
Kansas City Rural	Saline	240	Intersection improvements at Rte. C in Slater.	\$714	Increase economic growth and improve safety
Kansas City Rural	Ray	13	Upgrade signals at Main Street and South Street in Richmond.	\$595	Increase economic growth and improve safety
Kansas City Urban	Jackson	I-70	Corridor improvements from downtown Kansas City to I-435.	\$323,300	Major interstate reconstruction
Kansas City Urban	Jackson	I-70	Corridor improvements from I-435 to I-470.	\$180,000	Major interstate reconstruction
Central	Boone	I-70	Interchange improvements at Rte. 63.	\$70,891	Increase economic growth and improve safety
Central	Osage	63	Add new roadway from Rte. 50 to south of Westphalia.	\$35,397	Increase economic growth and improve safety
Central	Callaway	54	Interchange improvements at I-70 in Kingdom City.	\$8,253	Increase economic growth and improve safety

* Amounts in 2019 Dollars (Uninflated)

Tier 2 - High-Priority Unfunded Road and Bridge Needs - 2019

District	County	Route	Project Description	Estimated Funding Needed (\$1,000)*	Citizen's Guide Unfunded Needs Category
Central	Cole/Callaway	63/54	Corridor improvements at the Missouri River Bridge.	\$3,360	Increase economic growth and improve safety
Central	Boone	63	Interchange improvements at Rte. AC.	\$14,291	Increase economic growth and improve safety
Central	Camden	54	Add lanes from the square to the western city limits in Camdenton.	\$6,128	Increase economic growth and improve safety
Central	Phelps	I-44	Pavement repair from Rolla to St. James.	\$19,627	Major interstate reconstruction
Central	Moniteau	50	Construct new roadway from California to Tipton.	\$43,976	Increase economic growth and improve safety
Central	Cole	50	Interchange improvements, widen ramps and upgrade pedestrian facilities at Country Club Drive in Jefferson City.	\$11,765	Increase economic growth and improve safety
Central	Camden	MM	Roadway realignment in Camden County. Also includes Rte. TT and Rte. F.	\$25,020	Increase economic growth and improve safety
St. Louis	St. Louis	I-270	Corridor and interchange improvements from I-55/I-255 to the Chain of Rocks Bridge.	\$263,500	Major interstate reconstruction
St. Louis	Jefferson	I-55	Add lanes, bridge improvements, interchange improvements and pavement resurfacing from Rte. Z to Rte. 67.	\$76,810	Major interstate reconstruction
St. Louis	St. Louis City	I-44	Interchange improvements at Hampton Avenue, Kingshighway Boulevard, Vandeventer Avenue, and Jefferson Avenue.	\$59,000	Increase economic growth and improve safety

* Amounts in 2019 Dollars (Uninflated)

Tier 2 - High-Priority Unfunded Road and Bridge Needs - 2019

District	County	Route	Project Description	Estimated Funding Needed (\$1,000)*	Citizen's Guide Unfunded Needs Category
St. Louis	St. Louis City	I-70	Interchange improvements at Branch Street.	\$5,000	Increase economic growth and improve safety
St. Louis	Franklin	47	Roadway realignment at Rte. 50.	\$23,000	Increase economic growth and improve safety
St. Louis	St. Charles	I-64	Interchange improvements at I-70 and capital improvements from Rte. 364 to I-70/Rte. 61.	\$41,000	Major interstate reconstruction
St. Louis	St. Louis	I-64	Interchange improvements at Long Road.	\$33,000	Increase economic growth and improve safety
St. Louis	St. Charles	I-70	Roadway improvements, add ramps, add overpass, and interchange improvements from Convention Center to Cave Springs Road.	\$46,000	Increase economic growth and improve safety
St. Louis	St. Louis	I-70	Interchange improvements, roadway realignment, airport access improvements and bridge replacements from Cypress Road to Airflight Drive.	\$52,000	Increase economic growth and improve safety
St. Louis	St. Louis City	I-64	Interchange improvements at Grand Boulevard/Market Street.	\$18,000	Increase economic growth and improve safety
St. Louis	St. Louis City	H	Corridor and safety improvements from Adelaide Avenue to Riverview Drive.	\$23,000	Increase economic growth and improve safety
Southwest Rural	Benton Henry	7	Roadway realignment and intersection improvements from Tightwad to Warsaw and from Rte. 65 to the Camden County line.	\$13,800	Increase economic growth and improve safety
Southwest Rural	Barry/Christian/Greene/Lawrence	60	Safety and capital improvements from Springfield to Monett and on Rte. 37 from Monett to Seligman.	\$7,000	Increase economic growth and improve safety

* Amounts in 2019 Dollars (Uninflated)

Tier 2 - High-Priority Unfunded Road and Bridge Needs - 2019

District	County	Route	Project Description	Estimated Funding Needed (\$1,000)*	Citizen's Guide Unfunded Needs Category
Southwest Rural	Webster	60	Safety and capital improvements from Rogersville to east of Seymour.	\$30,000	Increase economic growth and improve safety
Southwest Rural	Jasper	66	Pavement improvements and upgrade pedestrian facilities to comply with the ADA Transition Plan from St. Louis Avenue to Rangeline Road in Joplin.	\$5,587	Improve Road Conditions
Southwest Rural	Jasper	66	Pavement improvements and upgrade pedestrian facilities to comply with the ADA Transition Plan from Schifferdecker Avenue to Maiden Lane in Joplin.	\$8,538	Improve Road Conditions
Southwest Rural	Newton	I-44	Add lanes from Rte. 43 (Main Street) to Loop 49 (Rangeline Road) in Joplin.	\$11,921	Major interstate reconstruction
Southwest Rural	Jasper	I-44	Ramp improvements at I-49 in Fidelity.	\$30,000	Increase economic growth and improve safety
Southwest Rural	Webster	I-44	Safety and capital improvements at various locations in Webster County.	\$1,500	Increase economic growth and improve safety
Southwest Rural	Cedar/ Polk	32	Safety and capital improvements from Stockton to Bolivar.	\$4,000	Increase economic growth and improve safety
Southwest Rural	Hickory	54	Intersection improvements at Rte. 65 in Preston.	\$1,707	Increase economic growth and improve safety
Southwest Rural	Benton/Hickory/ Dallas	65	Capital and intersection improvements from Warsaw to Buffalo.	\$10,000	Increase economic growth and improve safety
Southwest Rural	Various	Various	Update signals in the rural Southwest District.	\$5,000	Increase economic growth and improve safety

* Amounts in 2019 Dollars (Uninflated)

Tier 2 - High-Priority Unfunded Road and Bridge Needs - 2019

District	County	Route	Project Description	Estimated Funding Needed (\$1,000)*	Citizen's Guide Unfunded Needs Category
Southwest Rural	Various	Various	Pavement resurfacing on low volume routes in the rural Southwest District.	\$10,000	Improve Road Conditions
Southwest Rural	Jasper	171	Capital improvements from Rte. Z to Fir Road in Carl Junction.	\$25,000	Increase economic growth and improve safety
Southwest Rural	Christian	EE	Safety and capital improvements from Rte. 160 in Highlandville to Rte. 65.	\$7,000	Increase economic growth and improve safety
Southwest Rural	Jasper	171	Intersection improvements on McArthur Drive at Loop 49 (Madison Avenue) in Webb City.	\$6,700	Increase economic growth and improve safety
Southwest Rural	Taney	NEW	Construct new roadway from Rte. 65 to Rte. BB near Hollister.	\$12,000	Increase economic growth and improve safety
Southwest Rural	St. Clair	13	Intersection improvements in Lowry City.	\$1,529	Increase economic growth and improve safety
Southwest Rural	Hickory	54	Intersection improvements at Rte. 83 and on Rte. 83 at Wheatland School.	\$1,350	Increase economic growth and improve safety
Southwest Rural	McDonald	Bus 71	Intersection improvements at Patterson Street in Anderson.	\$2,000	Increase economic growth and improve safety
Southwest Rural	Dallas	65	Intersection improvements at Truman Road in Buffalo.	\$2,026	Increase economic growth and improve safety
Southwest Rural	Dade	160	Intersection improvements at Rte. 39 in Greenfield.	\$1,000	Increase economic growth and improve safety

* Amounts in 2019 Dollars (Uninflated)

Tier 2 - High-Priority Unfunded Road and Bridge Needs - 2019

District	County	Route	Project Description	Estimated Funding Needed (\$1,000)*	Citizen's Guide Unfunded Needs Category
Southwest Urban	Greene	Various	Arterial operational improvements in Springfield.	\$4,000	Increase economic growth and improve safety
Southwest Urban	Greene	60	Capital improvements from Rte. 13 (Kansas Expressway) to Campbell Avenue in Springfield.	\$8,052	Increase economic growth and improve safety
Southwest Urban	Christian	14	Intersection improvements at 6th Avenue in Ozark.	\$2,750	Increase economic growth and improve safety
Southwest Urban	Christian	14	Capital improvements from 6th Avenue to 14th Avenue in Ozark.	\$4,000	Increase economic growth and improve safety
Southwest Urban	Greene	I-44	Add lanes from Rte. 13 (Kansas Expressway) to Loop 44 (Glenstone Avenue) in Springfield.	\$30,000	Major interstate reconstruction
Southwest Urban	Greene	60	Add interchanges and access roads to convert to freeway from Farm Road 213 to Rte. 125 in Rogersville.	\$15,555	Increase economic growth and improve safety
Southwest Urban	Christian	65	Add lanes from Rte. 14 to Bus. 65 (South Street)/Rte. F in Ozark.	\$10,200	Increase economic growth and improve safety
Southwest Urban	Christian	65	Add lanes from Rte. CC to Rte. 14 in Ozark.	\$13,477	Increase economic growth and improve safety
Southwest Urban	Greene	MM	Add railroad overpass west of Rte. 60 in Republic.	\$15,000	Increase economic growth and improve safety
Southwest Urban	Christian	CC	Roadway realignment from Main Street to Rte. 160 north of Nixa.	\$6,000	Increase economic growth and improve safety

* Amounts in 2019 Dollars (Uninflated)

Tier 2 - High-Priority Unfunded Road and Bridge Needs - 2019

District	County	Route	Project Description	Estimated Funding Needed (\$1,000)*	Citizen's Guide Unfunded Needs Category
Southwest Urban	Christian	CC	Capital improvements from Fremont Road to Rte. 65 in Ozark.	\$4,000	Increase economic growth and improve safety
Southwest Urban	Greene	AB	Safety improvements from Rte. 160 to Rte. EE in Willard.	\$2,000	Increase economic growth and improve safety
Southwest Urban	Greene	125	Intersection improvements at Rte. OO in Strafford.	\$1,500	Increase economic growth and improve safety
Southwest Urban	Greene	FF	Intersection improvements at Weaver Road in Battlefield.	\$2,000	Increase economic growth and improve safety
Southeast	Cape Girardeau	61	Intersection improvements from Rte. D to Barton Square in Jackson.	\$1,155	Increase economic growth and improve safety
Southeast	Butler	67	Add lanes to provide four lane highway from County Road 272 to the Arkansas State Line	\$250	Increase economic growth and improve safety
Southeast	Butler	67	Upgrade to four lane freeway from Rte. 160 to the City of Neelyville.	\$31,351	Increase economic growth and improve safety
Southeast	Wright	95	Intersection improvements from Red Spring Road to Bus. 60 in Mountain Grove.	\$9,230	Increase economic growth and improve safety
Southeast	Dunklin	412	Add lanes to provide four lane highway from County Road 562 to Rte. O.	\$25,799	Increase economic growth and improve safety
Southeast	New Madrid	EE	Add railroad overpass at St. Jude's Industrial Park.	\$4,960	Increase economic growth and improve safety

* Amounts in 2019 Dollars (Uninflated)

Tier 2 - High-Priority Unfunded Road and Bridge Needs - 2019

District	County	Route	Project Description	Estimated Funding Needed (\$1,000)*	Citizen's Guide Unfunded Needs Category
Southeast	Ste. Genevieve	32	Intersection improvements at I-55.	\$877	Increase economic growth and improve safety
Southeast	Howell	63	Add lanes to provide four lane highway from Bill Virdon Blvd. in West Plains to Rte. PP.	\$12,383	Increase economic growth and improve safety
Southeast	Cape Girardeau	I-55	Interchange improvements at Rte. 74.	\$23,458	Increase economic growth and improve safety
Southeast	Howell	Bus 63	Intersection improvements at North Howell Avenue in West Plains.	\$1,404	Increase economic growth and improve safety
Southeast	Iron/Madison	72	Add shoulders from Rte. 21 to Rte. 67.	\$8,776	Increase economic growth and improve safety
Southeast	Stoddard	Bus 60	Capital improvements from Arvin Road to One Mile Road in Dexter.	\$11,554	Increase economic growth and improve safety
Southeast	New Madrid	EE	Bridge replacement over I-55.	\$8,679	Improve Bridge Conditions
Southeast	Perry	I-55	Add interchange 1.3 miles north of Rte. T.	\$22,462	Increase economic growth and improve safety
Southeast	Howell	160	Intersection improvements at Rte. BB.	\$418	Increase economic growth and improve safety
Southeast	Oregon	142	Raise roadway on east side of Eleven Point River Bridge.	\$3,862	Improve Road Conditions

* Amounts in 2019 Dollars (Uninflated)

Tier 2 - High-Priority Unfunded Road and Bridge Needs - 2019

District	County	Route	Project Description	Estimated Funding Needed (\$1,000)*	Citizen's Guide Unfunded Needs Category
Southeast	St. Francois	8	Intersection improvements from Hawthorne Street to Rte. 67 in Desloge.	\$3,466	Increase economic growth and improve safety
Southeast	Cape Girardeau	61	Intersection improvements from I-55 in Fruitland to Rte. D.	\$3,466	Increase economic growth and improve safety
Southeast	Douglas/Ozark	5	Add shoulders from Rte. A in Douglas County to Rte. MM in Ozark County.	\$8,149	Increase economic growth and improve safety
Southeast	Douglas	14	Pavement improvements, add rumblestrips and guardrail upgrades from Rte. O to the Beaver Creek Bridge.	\$1,066	Increase economic growth and improve safety
Southeast	Iron	32	Safety improvements from the west intersection of Rte. 49 to the east intersection of Rte. 49.	\$4,301	Increase economic growth and improve safety
Southeast	Bollinger	B	Add rumblestrips from Rte. 72 to Rte. 34.	\$3,761	Increase economic growth and improve safety
Southeast	Cape Girardeau	61	Intersection improvements at South Shawnee Boulevard in Jackson.	\$731	Increase economic growth and improve safety
Southeast	Cape Girardeau	61	Intersection improvements at South Donna Drive in Jackson.	\$731	Increase economic growth and improve safety
Southeast	Reynolds	F	Add new bridge over Logan Creek.	\$2,170	Improve Bridge Conditions
Southeast	Howell	63	Add lanes to provide four lane highway from Rte. PP to County Road 8820.	\$12,819	Increase economic growth and improve safety

* Amounts in 2019 Dollars (Uninflated)

Tier 2 - High-Priority Unfunded Road and Bridge Needs - 2019

District	County	Route	Project Description	Estimated Funding Needed (\$1,000)*	Citizen's Guide Unfunded Needs Category
Southeast	Iron	21	Safety improvements from Rte. E to Rte. CC.	\$3,687	Increase economic growth and improve safety
Southeast	New Madrid	I-55	Add interchange at Rte. U.	\$17,689	Increase economic growth and improve safety
Southeast	Perry/Cape Girardeau	61	Add shoulders from County Road 411 in Perry County to County Road 540 in Cape Girardeau County.	\$3,761	Increase economic growth and improve safety
Southeast	Wayne/Butler	T	Add rumblestrips from Rte. D in Wayne County to Rte. 60 in Butler County.	\$1,881	Increase economic growth and improve safety
Southeast	Cape Girardeau	Bloomfield Rd	Bridge replacement over I-55.	\$3,596	Improve Bridge Conditions
Southeast	Carter	A	Bridge replacement over Cane Creek.	\$620	Improve Bridge Conditions
Southeast	St. Francois	67	Interchange improvements at Rte. 32 in Leadington.	\$4,622	Increase economic growth and improve safety
Southeast	Ripley	K	Safety improvements from Little Black River to Ripley County Road K-3.	\$1,229	Increase economic growth and improve safety
Southeast	Carter	N	Bridge replacement over Middle Brushy Creek.	\$620	Improve Bridge Conditions
Southeast	Butler	M	Safety improvements at Butler County Road 459.	\$1,843	Increase economic growth and improve safety
Tier 2 Statewide Total:				\$2,221,171	

* Amounts in 2019 Dollars (Uninflated)

SUMMARY

Tier 2 High-Priority Unfunded Road and Bridge Needs - 2019

Amounts in Thousands (2019 Dollars-Uninflated)

District	Improve Bridge Conditions	Improve Road Conditions	Major Interstate Reconstruction	Increase Economic Growth and Improve Safety	Total
Northwest	\$32,768	\$24,852	-	\$48,000	\$105,620
Northeast	-	\$300	-	\$113,190	\$113,490
Kansas City Rural	-	-	-	\$56,725	\$56,725
Kansas City Urban	-	-	\$503,300	-	\$503,300
Central	-	-	\$19,627	\$219,081	\$238,708
St. Louis	-	-	\$381,310	\$259,000	\$640,310
Southwest Rural	-	\$24,125	\$11,921	\$161,612	\$197,658
Southwest Urban	-	-	\$30,000	\$88,534	\$118,534
Southeast	\$15,685	\$3,862	-	\$227,279	\$246,826
Total	\$48,453	\$53,139	\$946,158	\$1,173,421	\$2,221,171

SUMMARY

If funded, the tier 2 projects would improve safety and provide the following impacts in Missouri:

Category	Impact
Improved Road Condition	267 Miles
Improved Bridge Condition	37 Bridges
Major Interstate Reconstruction	32 Miles
20-Year Economic Output	\$5.5 Billion
Annual Jobs Created	1,752 Jobs

The \$2.2 billion of tier 2 projects, when added to the \$608 million of tier 1 projects, would complete 34.3% of the \$8.25 billion of high-priority unfunded needs across the state.

