

Missouri

HIGH-PRIORITY UNFUNDED NEEDS

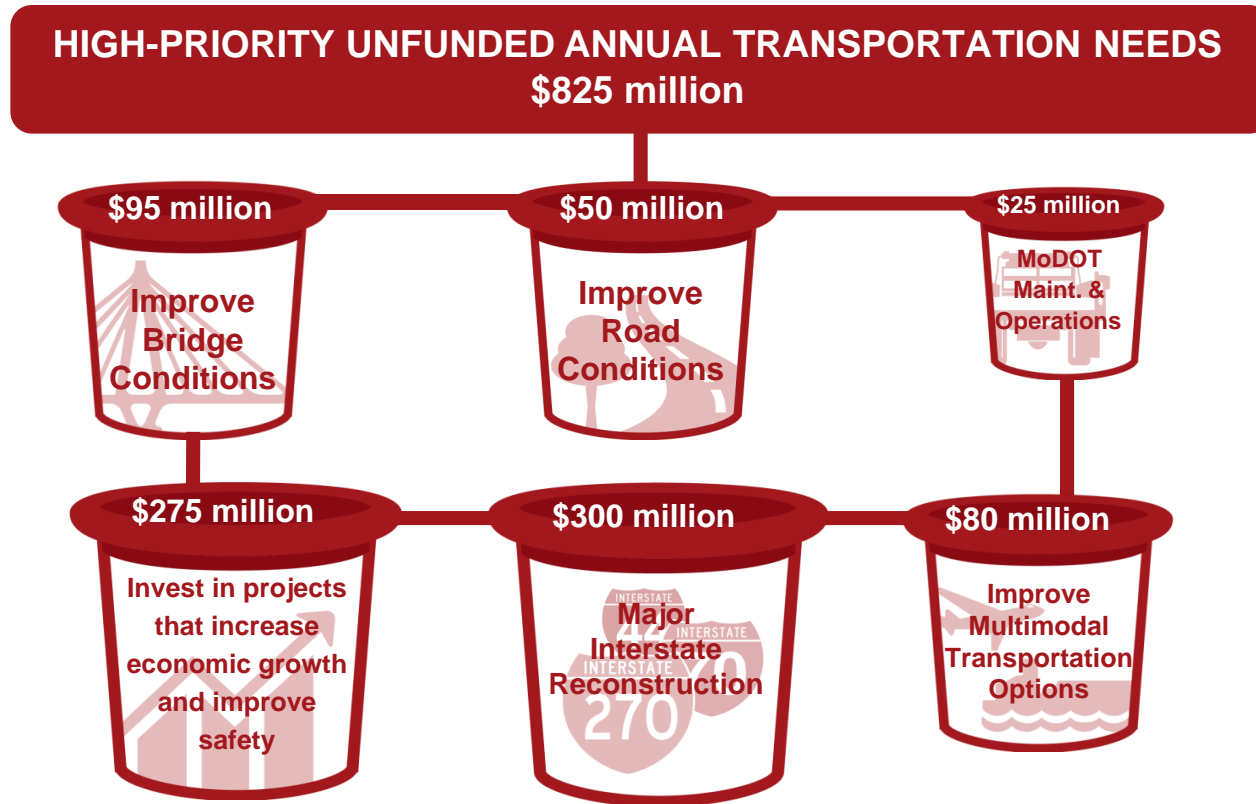


2019



INTRODUCTION

Missourians have repeatedly communicated the number one goal for MoDOT is to take care of the existing system of roads and bridges, so the majority of taxpayer dollars for transportation are invested in asset management projects. Current funding levels are only sufficient to maintain the transportation system in its current condition leaving many transportation needs unfunded. The Citizen's Guide to Transportation Funding identifies \$825 million of high-priority unfunded annual transportation needs under six categories, totaling \$8.25 billion over 10 years.

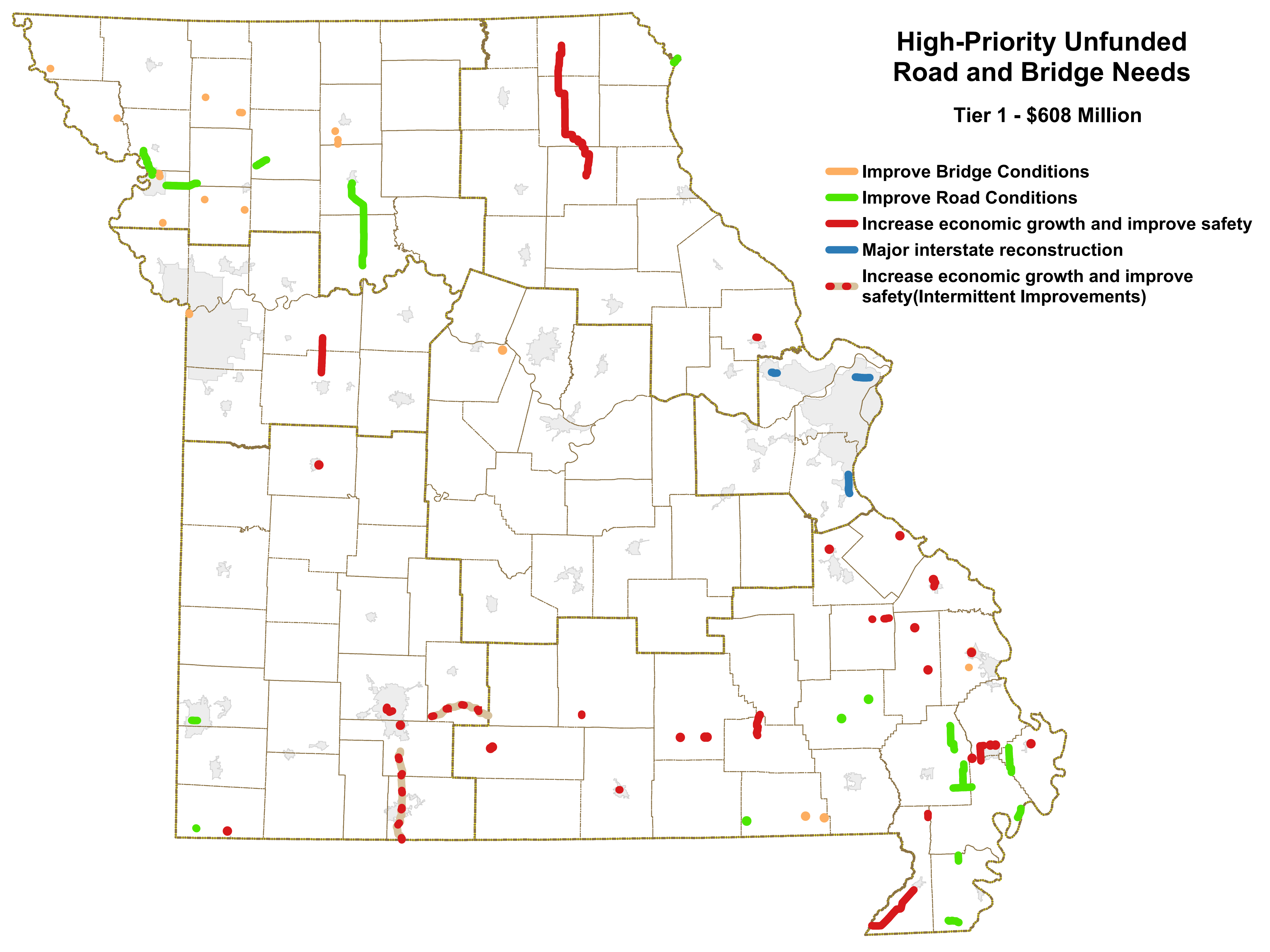


Throughout 2019, MoDOT collaborated with Metropolitan Planning Organizations and Regional Planning Commissions across the state to begin identifying specific projects within each category. The projects were divided into two tiers - the highest priority tier one totaling \$608 million and the next list of high-priority tier two projects totaling \$2.2 billion. The following pages summarize both lists of unfunded projects.

High-Priority Unfunded Road and Bridge Needs

Tier 1 - \$608 Million

- Improve Bridge Conditions
- Improve Road Conditions
- Increase economic growth and improve safety
- Major interstate reconstruction
- Increase economic growth and improve safety(Intermittent Improvements)



Tier 1 - High-Priority Unfunded Road and Bridge Needs - 2019

| District | County | Route | Project Description | Estimated Funding Needed (\$1,000)* | Citizen's Guide Unfunded Needs Category |
|-----------|------------|-------|---|-------------------------------------|---|
| Northwest | Buchanan | 59 | Pavement resurfacing from Rte. K to Krug Park and I-229 ramp. | \$1,007 | Improve Road Conditions |
| Northwest | Andrew | K | Pavement resurfacing from I-29 to Rte. 59. | \$789 | Improve Road Conditions |
| Northwest | Daviess | 69 | Pavement resurfacing from Rte. 6 to I-35. | \$308 | Improve Road Conditions |
| Northwest | Grundy | W | Bridge replacement over Hickory Creek. | \$681 | Improve Bridge Conditions |
| Northwest | Grundy | W | Bridge replacement over Gees Creek. | \$681 | Improve Bridge Conditions |
| Northwest | Grundy | W | Bridge replacement over Wolf Creek. | \$603 | Improve Bridge Conditions |
| Northwest | Livingston | C | Bridge replacement over Shoal Creek Drainage Ditch. | \$1,072 | Improve Bridge Conditions |
| Northwest | Atchison | 111 | Bridge replacement over Pike Creek Drainage Ditch. | \$398 | Improve Bridge Conditions |
| Northwest | Holt | B | Bridge replacement over Hickory Creek. | \$622 | Improve Bridge Conditions |
| Northwest | Gentry | T | Bridge replacement over Brushy Creek. | \$494 | Improve Bridge Conditions |

* Amounts in 2019 Dollars (Uninflated)

Tier 1 - High-Priority Unfunded Road and Bridge Needs - 2019

| District | County | Route | Project Description | Estimated Funding Needed (\$1,000)* | Citizen's Guide Unfunded Needs Category |
|-----------|--------------------|-----------------|---|-------------------------------------|---|
| Northwest | Gentry | T | Bridge replacement over Fitzgerald Branch. | \$283 | Improve Bridge Conditions |
| Northwest | Livingston/Carroll | 65 | Pavement resurfacing from Rte. 36 to Rte. 24. | \$5,798 | Improve Road Conditions |
| Northwest | Gentry | E | Bridge replacement over Walnut Fork. | \$747 | Improve Bridge Conditions |
| Northwest | Buchanan | Y | Bridge replacement over Bee Creek. | \$520 | Improve Bridge Conditions |
| Northwest | Buchanan | Y | Bridge replacement over Bee Creek. | \$559 | Improve Bridge Conditions |
| Northwest | Clinton | NN | Bridge replacement over Castile Creek. | \$831 | Improve Bridge Conditions |
| Northwest | Clinton | H | Bridge replacement over I-35. | \$1,710 | Improve Bridge Conditions |
| Northwest | Buchanan | Cook Road | Bridge rehabilitation over I-29. | \$850 | Improve Bridge Conditions |
| Northwest | Buchanan | Gene Field Road | Bridge rehabilitation over I-29. | \$850 | Improve Bridge Conditions |
| Northwest | Buchanan/DeKalb | 36 | Pavement resurfacing eastbound lanes from east of Rte. AC to Rte. 31. | \$3,752 | Improve Road Conditions |

* Amounts in 2019 Dollars (Uninflated)

Tier 1 - High-Priority Unfunded Road and Bridge Needs - 2019

| District | County | Route | Project Description | Estimated Funding Needed (\$1,000)* | Citizen's Guide Unfunded Needs Category |
|-------------------|--------------------|-------|---|-------------------------------------|---|
| Northwest | Buchanan/DeKalb | 36 | Pavement resurfacing westbound lanes from east of Rte. AC to Rte. 31. | \$3,752 | Improve Road Conditions |
| Northeast | Lincoln | 47 | Modify interchange configuration at Rte. 61 in Troy. | \$12,930 | Increase economic growth and improve safety |
| Northeast | Clark | 61 | Raise road at Alexandria. | \$4,500 | Improve Road Conditions |
| Northeast | Scotland/Knox | 15 | Add rumblestripes from Memphis to Edina. | \$2,570 | Increase economic growth and improve safety |
| Northeast | Knox/Shelby | 15 | Add rumblestripes from Edina to Shelbyville. | \$3,660 | Increase economic growth and improve safety |
| Kansas City Rural | Lafayette/ Johnson | 13 | Corridor and safety improvements from I-70 to north of Warrensburg. | \$12,495 | Increase economic growth and improve safety |
| Kansas City Urban | Jackson | 169 | Bridge improvements over the Missouri River in Kansas City on the Buck O'Neil bridge. | \$78,000 | Improve Bridge Conditions |
| Central | Cooper | I-70 | Bridge replacement over the Missouri River at Rocheport. | \$240,000 | Improve Bridge Conditions |
| St. Louis | St. Louis | I-270 | Corridor and interchange improvements from I-70 to Chain of Rocks Bridge (Partial) | \$19,000 | Major interstate reconstruction |
| St. Louis | St. Charles | I-70 | Add lanes and pavement resurfacing from Rte. Z to Wentzville Parkway. | \$36,000 | Major interstate reconstruction |

* Amounts in 2019 Dollars (Uninflated)

Tier 1 - High-Priority Unfunded Road and Bridge Needs - 2019

| District | County | Route | Project Description | Estimated Funding Needed (\$1,000)* | Citizen's Guide Unfunded Needs Category |
|-----------------|-----------------|-------|--|-------------------------------------|---|
| St. Louis | Jefferson | I-55 | Add lanes, bridge improvements, interchange improvements and pavement resurfacing from Rte. Z to Rte. 67. (Partial) | \$78,000 | Major interstate reconstruction |
| Southwest Rural | Jasper | 66 | Pavement improvements and upgrade pedestrian facilities to comply with the ADA Transition Plan from Maiden Lane to Main Street in Joplin. | \$8,638 | Improve Road Conditions |
| Southwest Rural | Jasper | 66 | Pavement improvements and upgrade pedestrian facilities to comply with the ADA Transition Plan from Main Street to St. Louis Avenue in Joplin. | \$8,223 | Improve Road Conditions |
| Southwest Rural | Webster | 60 | Safety, capital improvements and intersection improvements from Rogersville to east of Seymour. | \$5,000 | Increase economic growth and improve safety |
| Southwest Rural | McDonald | 59/90 | Streambank and pedestrian improvements in Noel. | \$4,146 | Improve Road Conditions |
| Southwest Rural | Christian/Taney | 65 | Safety and intersection improvements from Rte. EE near Ozark to the Arkansas State line. | \$4,000 | Increase economic growth and improve safety |
| Southwest Rural | Henry | 13 | Intersection and pavement improvements at Rte. 7, Rte. 18 and Rte. 52 (Ohio St. and Route 13) in Clinton. | \$3,250 | Increase economic growth and improve safety |
| Southwest Rural | McDonald | 71 | Intersection improvements at Rains Road in Jane. | \$550 | Increase economic growth and improve safety |
| Southwest Urban | Greene | 60 | Add lanes from Campbell Avenue to National Avenue in Springfield. | \$11,092 | Increase economic growth and improve safety |
| Southwest Urban | Greene | 13 | Capital improvements from Battlefield Road to Rte. 60 (James River Freeway). | \$7,772 | Increase economic growth and improve safety |

* Amounts in 2019 Dollars (Uninflated)

Tier 1 - High-Priority Unfunded Road and Bridge Needs - 2019

| District | County | Route | Project Description | Estimated Funding Needed (\$1,000)* | Citizen's Guide Unfunded Needs Category |
|-----------------|----------------|---------|--|-------------------------------------|---|
| Southwest Urban | Christian | CC | Intersection improvements at 22nd Street in Ozark. | \$1,500 | Increase economic growth and improve safety |
| Southwest Urban | Greene | Various | Arterial operational improvements in Springfield. | \$1,000 | Increase economic growth and improve safety |
| Southeast | Cape Girardeau | 61 | Bridge replacement over Hubble Creek. | \$2,350 | Improve Bridge Conditions |
| Southeast | Ripley | 142 | Bridge replacement over Harris Creek. | \$806 | Improve Bridge Conditions |
| Southeast | Ripley | 142 | Bridge replacement over Ditch #2. | \$496 | Improve Bridge Conditions |
| Southeast | Shannon | 60 | Intersection improvements at Rte. 99. | \$616 | Increase economic growth and improve safety |
| Southeast | Shannon | 60 | Intersection improvements at the east intersection of Rte. 19. | \$616 | Increase economic growth and improve safety |
| Southeast | Shannon | 60 | Intersection improvements at the west intersection of Rte. 19. | \$616 | Increase economic growth and improve safety |
| Southeast | Ste. Genevieve | 61 | Intersection improvements at Industrial River Road. | \$877 | Increase economic growth and improve safety |
| Southeast | Scott | HH | Intersection improvements at Ingram Road. | \$585 | Increase economic growth and improve safety |

* Amounts in 2019 Dollars (Uninflated)

Tier 1 - High-Priority Unfunded Road and Bridge Needs - 2019

| District | County | Route | Project Description | Estimated Funding Needed (\$1,000)* | Citizen's Guide Unfunded Needs Category |
|-----------|----------------|-------|--|-------------------------------------|---|
| Southeast | Scott | HH | Intersection improvements at Rte. H. | \$292 | Increase economic growth and improve safety |
| Southeast | Dunklin | 412 | Scoping for adding lanes to provide four lane highway from Rte. AC to Rte. O. | \$1,000 | Increase economic growth and improve safety |
| Southeast | Bollinger | 34 | Intersection improvements at Rte. B. | \$585 | Increase economic growth and improve safety |
| Southeast | Howell | 160 | Capital improvements from Rte. 63 to Bus. 63. | \$3,155 | Increase economic growth and improve safety |
| Southeast | Carter | D | Pavement improvements and add rumblestrips from Reynolds County Road 631 to Bus. 60. | \$2,131 | Increase economic growth and improve safety |
| Southeast | Cape Girardeau | 61 | Intersection improvements at Mary Street in Jackson. | \$2,070 | Increase economic growth and improve safety |
| Southeast | Wayne | A | Culvert replacement 0.5 miles west of Rte. 67. | \$585 | Improve Road Conditions |
| Southeast | Douglas | 14 | Intersection improvements at North Jefferson Avenue in Ava. | \$1,287 | Increase economic growth and improve safety |
| Southeast | Madison | 72 | Intersection improvements from Chamber Drive to Sargent Drive in Fredericktown. | \$578 | Increase economic growth and improve safety |
| Southeast | Stoddard | N | Pavement improvements from Rte. 91 to Rte. AB. | \$535 | Improve Road Conditions |

* Amounts in 2019 Dollars (Uninflated)

Tier 1 - High-Priority Unfunded Road and Bridge Needs - 2019

| District | County | Route | Project Description | Estimated Funding Needed (\$1,000)* | Citizen's Guide Unfunded Needs Category |
|-----------|----------------|--------|--|-------------------------------------|---|
| Southeast | Scott | ZZ | Pavement improvements and add rumblestripes from Rte. BB to Rte. 61. | \$439 | Increase economic growth and improve safety |
| Southeast | Scott | BB | Pavement improvements and add rumblestripes from Rte. ZZ to Bus. 60. | \$1,254 | Increase economic growth and improve safety |
| Southeast | New Madrid | Bus 60 | Pavement improvements and add rumblestripes from Rte. 60 to Rte. BB. | \$439 | Increase economic growth and improve safety |
| Southeast | Perry | 61 | Intersection improvements at Rte. AC. | \$585 | Increase economic growth and improve safety |
| Southeast | Douglas | 5 | Intersection improvements at Rte Y. | \$544 | Increase economic growth and improve safety |
| Southeast | Texas | 181 | Intersection improvements from Main Street to Rte. 60 in Cabool. | \$645 | Increase economic growth and improve safety |
| Southeast | Cape Girardeau | Z | Bridge replacements over Hubble Creek Overflow and Hubble Creek. | \$2,480 | Improve Bridge Conditions |
| Southeast | Pemiscot | E | Pavement improvements from Rte. 61 to County Road 568. | \$268 | Improve Road Conditions |
| Southeast | Mississippi | 62 | Intersection improvements at I-57. | \$1,849 | Increase economic growth and improve safety |
| Southeast | St. Francois | K | Intersection improvements at North Wood Drive in Bonne Terre. | \$1,754 | Increase economic growth and improve safety |

* Amounts in 2019 Dollars (Uninflated)

Tier 1 - High-Priority Unfunded Road and Bridge Needs - 2019

| District | County | Route | Project Description | Estimated Funding Needed (\$1,000)* | Citizen's Guide Unfunded Needs Category |
|-----------|------------|--------|--|-------------------------------------|---|
| Southeast | Ripley | 142 | Culvert replacement 0.1 miles west of Rte. V. | \$585 | Improve Road Conditions |
| Southeast | Wayne | C | Culvert replacement 1 mile north of Rte. E. | \$1,170 | Improve Road Conditions |
| Southeast | Perry | 51 | Intersection improvements from Old St. Mary Road to Brenda Avenue. | \$1,155 | Increase economic growth and improve safety |
| Southeast | New Madrid | AB | Pavement improvements from Rte. WW to the end of state maintenance. | \$241 | Improve Road Conditions |
| Southeast | New Madrid | Z | Intersection improvements at County Road 480 in New Madrid County. | \$187 | Increase economic growth and improve safety |
| Southeast | Madison | J | Safety improvements from County Road 250 to Rte. W. | \$1,754 | Increase economic growth and improve safety |
| Southeast | Bollinger | 51 | Intersection improvements at Rte. 72. | \$1,170 | Increase economic growth and improve safety |
| Southeast | Dunklin | Bus 25 | Intersection improvements from Rte. 25 south to Broadwater Road in Malden. | \$867 | Increase economic growth and improve safety |
| Southeast | Pemiscot | CC | Pavement improvements from the beginning of state maintenance to Rte. A. | \$171 | Improve Road Conditions |
| Southeast | Stoddard | CC | Pavement improvements from Rte. 114 to Rte. A. | \$642 | Improve Road Conditions |

* Amounts in 2019 Dollars (Uninflated)

Tier 1 - High-Priority Unfunded Road and Bridge Needs - 2019

| District | County | Route | Project Description | Estimated Funding Needed (\$1,000)* | Citizen's Guide Unfunded Needs Category |
|--------------------------------|-------------|-------|--|-------------------------------------|---|
| Southeast | Mississippi | B | Pavement improvements and add rumblestripes from Rte. 62 to Rte. 80. | \$1,467 | Improve Road Conditions |
| Southeast | Stoddard | A | Pavement improvements from Rte. 153 to County Road 629 in New Madrid County. | \$455 | Improve Road Conditions |
| Tier 1 Statewide Total: | | | | \$607,934 | |

* Amounts in 2019 Dollars (Uninflated)

SUMMARY

Tier 1 High-Priority Unfunded Road and Bridge Needs - 2019

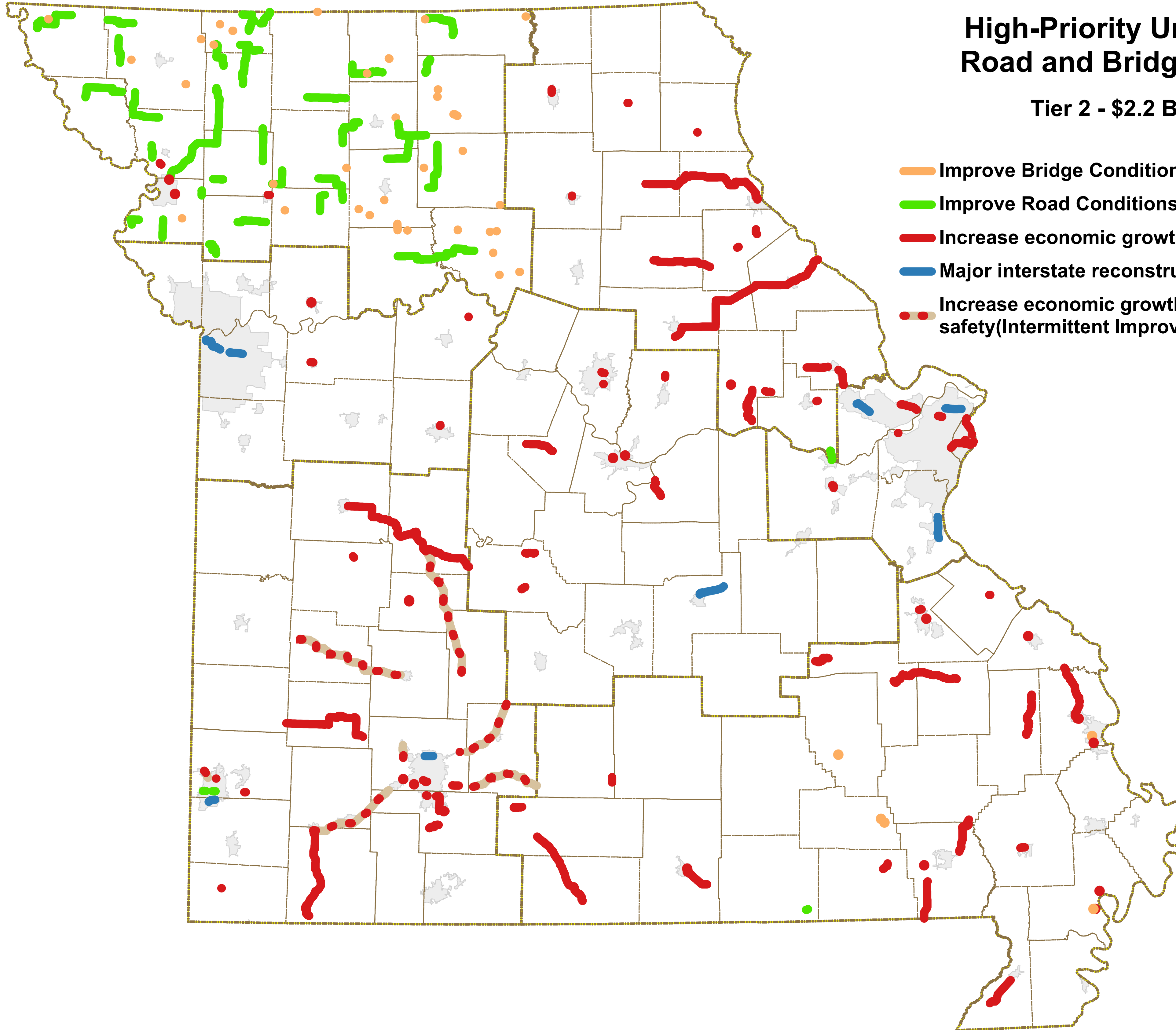
Amounts in Thousands (2019 Dollars-Uninflated)

| District | Improve Bridge Conditions | Improve Road Conditions | Major Interstate Reconstruction | Increase Economic Growth and Improve Safety | Total |
|-------------------|---------------------------|-------------------------|---------------------------------|---|------------------|
| Northwest | \$10,901 | \$15,406 | - | - | \$26,307 |
| Northeast | - | \$4,500 | - | \$19,160 | \$23,660 |
| Kansas City Rural | - | - | - | \$12,495 | \$12,495 |
| Kansas City Urban | \$78,000 | - | - | - | \$78,000 |
| Central | \$240,000 | - | - | - | \$240,000 |
| St. Louis | - | - | \$133,000 | - | \$133,000 |
| Southwest Rural | - | \$21,007 | - | \$12,800 | \$33,807 |
| Southwest Urban | - | - | - | \$21,364 | \$21,364 |
| Southeast | \$6,132 | \$6,119 | - | \$27,050 | \$39,301 |
| Total | \$335,033 | \$47,032 | \$133,000 | \$92,869 | \$607,934 |

High-Priority Unfunded Road and Bridge Needs

Tier 2 - \$2.2 Billion

- Improve Bridge Conditions
- Improve Road Conditions
- Increase economic growth and improve safety
- Major interstate reconstruction
- Increase economic growth and improve safety(Intermittent Improvements)



Tier 2 - High-Priority Unfunded Road and Bridge Needs - 2019

| District | County | Route | Project Description | Estimated Funding Needed (\$1,000)* | Citizen's Guide Unfunded Needs Category |
|-----------|------------------|-------|---|-------------------------------------|---|
| Northwest | Andrew/Buchanan | 169 | Pavement resurfacing from Rte. 31 to I-29. | \$1,609 | Improve Road Conditions |
| Northwest | Buchanan | 116 | Pavement resurfacing from Rte. 59 to Rte. 371. | \$1,150 | Improve Road Conditions |
| Northwest | Carroll/Chariton | M | Pavement resurfacing from Rte. 65 to Rte. F. | \$1,817 | Improve Road Conditions |
| Northwest | Harrison | MM | Pavement resurfacing from Rte. 13 to Rte. CC. | \$797 | Improve Road Conditions |
| Northwest | Mercer | D | Pavement resurfacing from Rte. 136 to Rte. 65. | \$810 | Improve Road Conditions |
| Northwest | Daviess | 190 | Pavement resurfacing from Rte. 6 to Rte. 146. | \$751 | Improve Road Conditions |
| Northwest | Buchanan/Clinton | 116 | Pavement resurfacing from Rte. 371 to Rte. 169. | \$1,150 | Improve Road Conditions |
| Northwest | Gentry/DeKalb | 169 | Pavement resurfacing from Stanberry north city limits to Rte. 31. | \$1,380 | Improve Road Conditions |
| Northwest | Nodaway/ Andrew | Y | Pavement resurfacing from Nodaway County line to Rte. 71. | \$1,025 | Improve Road Conditions |
| Northwest | Andrew | CC | Pavement resurfacing from Rte. K to Rte. 59. | \$265 | Improve Road Conditions |

* Amounts in 2019 Dollars (Uninflated)

Tier 2 - High-Priority Unfunded Road and Bridge Needs - 2019

| District | County | Route | Project Description | Estimated Funding Needed (\$1,000)* | Citizen's Guide Unfunded Needs Category |
|-----------|------------|-------|--|-------------------------------------|---|
| Northwest | Atchison | B | Pavement resurfacing from Rte. A to Rte. 59. | \$1,025 | Improve Road Conditions |
| Northwest | Nodaway | C | Pavement resurfacing from Rte. 71 to Rte. UU. | \$577 | Improve Road Conditions |
| Northwest | Nodaway | PP | Pavement resurfacing from Rte. 136 to Rte. 46. | \$523 | Improve Road Conditions |
| Northwest | Holt | C | Pavement resurfacing from Rte. 59 to Rte. 113. | \$998 | Improve Road Conditions |
| Northwest | Nodaway | NN | Bridge replacement over Platte River. | \$1,608 | Improve Bridge Conditions |
| Northwest | Worth | 46 | Bridge replacement over Marlowe Branch. | \$838 | Improve Bridge Conditions |
| Northwest | Worth | W | Bridge replacement over West Fork Grand River. | \$1,685 | Improve Bridge Conditions |
| Northwest | Livingston | 65 | Bridge replacement over Shoal Creek Overflow. | \$3,267 | Improve Bridge Conditions |
| Northwest | Carroll | 65 | Bridge replacement over Mound Creek. | \$1,431 | Improve Bridge Conditions |
| Northwest | Atchison | 275 | Bridge replacement over East Fork High Creek. | \$1,076 | Improve Bridge Conditions |

* Amounts in 2019 Dollars (Uninflated)

Tier 2 - High-Priority Unfunded Road and Bridge Needs - 2019

| District | County | Route | Project Description | Estimated Funding Needed (\$1,000)* | Citizen's Guide Unfunded Needs Category |
|-----------|------------|-------|--|-------------------------------------|---|
| Northwest | Livingston | C | Bridge replacement over Shoal Creek. | \$1,048 | Improve Bridge Conditions |
| Northwest | Nodaway | VV | Bridge replacement over Platte River. | \$2,024 | Improve Bridge Conditions |
| Northwest | Sullivan | E | Bridge replacement over West Locust Creek. | \$716 | Improve Bridge Conditions |
| Northwest | Worth | A | Bridge replacement over Stream. | \$177 | Improve Bridge Conditions |
| Northwest | Carroll | J | Bridge replacement over Bridge Creek. | \$610 | Improve Bridge Conditions |
| Northwest | Livingston | D | Bridge replacement over Rattlesnake Creek. | \$746 | Improve Bridge Conditions |
| Northwest | Buchanan | I-29 | Interchange improvements at Rte. 169. | \$23,000 | Increase economic growth and improve safety |
| Northwest | DeKalb | 36 | Interchange improvements at I-35. | \$6,250 | Increase economic growth and improve safety |
| Northwest | Mercer | E | Bridge replacement over West Honey Creek. | \$638 | Improve Bridge Conditions |
| Northwest | Mercer | D | Bridge replacement over Muddy Creek. | \$556 | Improve Bridge Conditions |

* Amounts in 2019 Dollars (Uninflated)

Tier 2 - High-Priority Unfunded Road and Bridge Needs - 2019

| District | County | Route | Project Description | Estimated Funding Needed (\$1,000)* | Citizen's Guide Unfunded Needs Category |
|-----------|-------------------|-------|---|-------------------------------------|---|
| Northwest | Sullivan | T | Bridge replacement over East Locust Creek. | \$627 | Improve Bridge Conditions |
| Northwest | Chariton | PP | Bridge replacement over Middle Fork Chariton River. | \$892 | Improve Bridge Conditions |
| Northwest | Chariton | CC | Bridge replacement over Yellow Creek. | \$1,131 | Improve Bridge Conditions |
| Northwest | Putnam | E | Pavement resurfacing from Rte. M to Rte. 136. | \$812 | Improve Road Conditions |
| Northwest | Sullivan | K | Pavement resurfacing from Rte. EE to Rte. E. | \$356 | Improve Road Conditions |
| Northwest | Livingston/Grundy | K | Pavement resurfacing from Rte. 65 to Rte. E. | \$874 | Improve Road Conditions |
| Northwest | Grundy/Linn | E | Pavement resurfacing from Rte. 6 to Rte. 139. | \$786 | Improve Road Conditions |
| Northwest | Linn | Y | Pavement resurfacing from Rte. 139 to Rte. DD. | \$1,022 | Improve Road Conditions |
| Northwest | Chariton | D | Bridge replacement over Clark Branch. | \$1,026 | Improve Bridge Conditions |
| Northwest | Chariton | D | Bridge replacement over Mussel Fork Creek. | \$932 | Improve Bridge Conditions |

* Amounts in 2019 Dollars (Uninflated)

Tier 2 - High-Priority Unfunded Road and Bridge Needs - 2019

| District | County | Route | Project Description | Estimated Funding Needed (\$1,000)* | Citizen's Guide Unfunded Needs Category |
|-----------|--------------|-------|---|-------------------------------------|---|
| Northwest | Daviess | 190 | Bridge replacement over Clear Creek. | \$1,202 | Improve Bridge Conditions |
| Northwest | Harrison | 69 | Bridge replacement over Zadio Branch. | \$273 | Improve Bridge Conditions |
| Northwest | Harrison | D | Bridge replacement over Ames Creek. | \$392 | Improve Bridge Conditions |
| Northwest | Linn | B | Bridge replacement over Smokey Branch. | \$493 | Improve Bridge Conditions |
| Northwest | Buchanan | AC | Bridge rehabilitation and interchange improvements at Rte. 36. | \$12,500 | Increase economic growth and improve safety |
| Northwest | Worth | Y | Pavement resurfacing from Rte. 46 to the end of state maintenance. | \$310 | Improve Road Conditions |
| Northwest | Worth | PP | Pavement resurfacing from Rte. 169 to the end of state maintenance. | \$197 | Improve Road Conditions |
| Northwest | Worth | M | Pavement resurfacing from Rte. 169 to Rte. C. | \$503 | Improve Road Conditions |
| Northwest | Worth | O | Pavement resurfacing from Iowa State line to Rte. T. | \$362 | Improve Road Conditions |
| Northwest | Worth/Gentry | N | Pavement resurfacing from Rte. M to Rte. 136. | \$790 | Improve Road Conditions |

* Amounts in 2019 Dollars (Uninflated)

Tier 2 - High-Priority Unfunded Road and Bridge Needs - 2019

| District | County | Route | Project Description | Estimated Funding Needed (\$1,000)* | Citizen's Guide Unfunded Needs Category |
|-----------|------------------|-------|--|-------------------------------------|---|
| Northwest | Worth/Gentry | U | Pavement resurfacing from Rte. W to Rte. O. | \$573 | Improve Road Conditions |
| Northwest | Linn | C | Bridge replacement over Long Branch. | \$996 | Improve Bridge Conditions |
| Northwest | Linn | WW | Bridge replacement over Van Dorsen Creek. | \$483 | Improve Bridge Conditions |
| Northwest | Putnam | N | Bridge replacement over Turkey Creek. | \$550 | Improve Bridge Conditions |
| Northwest | Putnam | M | Bridge replacement over Medicine Creek Fork. | \$583 | Improve Bridge Conditions |
| Northwest | Sullivan | PP | Bridge replacement over West Locust Creek. | \$820 | Improve Bridge Conditions |
| Northwest | Buchanan | H | Bridge replacement over Platte River Overflow. | \$650 | Improve Bridge Conditions |
| Northwest | Caldwell/Daviess | M | Pavement resurfacing from Rte. 36 to Rte. 13. | \$901 | Improve Road Conditions |
| Northwest | Caldwell | B | Pavement resurfacing from Nettleton city limits to Rte. U. | \$402 | Improve Road Conditions |
| Northwest | DeKalb | O | Pavement resurfacing from Rte. N to Rte. 31. | \$203 | Improve Road Conditions |

* Amounts in 2019 Dollars (Uninflated)

Tier 2 - High-Priority Unfunded Road and Bridge Needs - 2019

| District | County | Route | Project Description | Estimated Funding Needed (\$1,000)* | Citizen's Guide Unfunded Needs Category |
|-----------|---------------|-------|---|-------------------------------------|---|
| Northwest | Gentry/DeKalb | D | Pavement resurfacing from Rte. Z to Rte. 6. | \$671 | Improve Road Conditions |
| Northwest | Daviess | BB | Pavement resurfacing from Rte. 69 to Rte. 69. | \$474 | Improve Road Conditions |
| Northwest | Caldwell | U | Bridge replacement over Shoal Creek. | \$1,415 | Improve Bridge Conditions |
| Northwest | Chariton | 5 | Bridge replacement over Cottonwood Creek. | \$893 | Improve Bridge Conditions |
| Northwest | Chariton | KK | Bridge replacement over Puzzle Creek. | \$673 | Improve Bridge Conditions |
| Northwest | Daviess | BB | Bridge replacement over I-35. | \$1,781 | Improve Bridge Conditions |
| Northwest | Grundy | N | Bridge replacement over No Creek. | \$536 | Improve Bridge Conditions |
| Northwest | Andrew | I-29 | Interchange improvements at Rte. 71. | \$6,250 | Increase economic growth and improve safety |
| Northwest | Buchanan | KK | Pavement resurfacing from west Rte. 59 to east Rte. 59. | \$280 | Improve Road Conditions |
| Northwest | Buchanan | AB | Pavement resurfacing from Rte. 6 to Rte. 36. | \$110 | Improve Road Conditions |

* Amounts in 2019 Dollars (Uninflated)

Tier 2 - High-Priority Unfunded Road and Bridge Needs - 2019

| District | County | Route | Project Description | Estimated Funding Needed (\$1,000)* | Citizen's Guide Unfunded Needs Category |
|-----------|---------------|-------|---|-------------------------------------|---|
| Northwest | Buchanan | CC | Pavement resurfacing from Rte. 371 to Rte. 116. | \$360 | Improve Road Conditions |
| Northwest | Clinton | H | Pavement resurfacing from Rte. 33 to Rte. 69. | \$595 | Improve Road Conditions |
| Northwest | Clinton | O | Pavement resurfacing from Rte. 169 to the end of state maintenance. | \$394 | Improve Road Conditions |
| Northeast | Lincoln | 47 | Add shoulders from Troy to Hawk Point. | \$13,200 | Increase economic growth and improve safety |
| Northeast | Montgomery | 19 | Add shoulders from I-70 to McKittrick. | \$1,330 | Increase economic growth and improve safety |
| Northeast | Monroe/Ralls | 154 | Add shoulders from Paris to Perry. | \$2,080 | Increase economic growth and improve safety |
| Northeast | Shelby/Marion | 168 | Add shoulders from Shelbyville to Hannibal. | \$4,610 | Increase economic growth and improve safety |
| Northeast | Montgomery | I-70 | Add lanes at Mineola Hill. | \$8,850 | Increase economic growth and improve safety |
| Northeast | Macon | 63 | Interchange improvements at Rte. 36 in Macon. | \$2,340 | Increase economic growth and improve safety |
| Northeast | Ralls | 61 | Safety improvements at Rte. A. | \$2,400 | Increase economic growth and improve safety |

* Amounts in 2019 Dollars (Uninflated)

Tier 2 - High-Priority Unfunded Road and Bridge Needs - 2019

| District | County | Route | Project Description | Estimated Funding Needed (\$1,000)* | Citizen's Guide Unfunded Needs Category |
|-----------|--------------------|--------|--|-------------------------------------|---|
| Northeast | Ralls | 19 | Add turn lanes at Mark Twain Schools near Center. | \$700 | Increase economic growth and improve safety |
| Northeast | Knox | 6 | Add turn lanes at schools and nursing home near Edina. | \$820 | Increase economic growth and improve safety |
| Northeast | Lewis | 6 | Add turn lanes at Highland High School near Ewing. | \$590 | Increase economic growth and improve safety |
| Northeast | Adair | Bus 63 | Add lanes from Brewington to Rte. 6. | \$1,790 | Increase economic growth and improve safety |
| Northeast | Audrain/Ralls/Pike | 54 | Scoping for adding lanes from Mexico to Louisiana. | \$200 | Increase economic growth and improve safety |
| Northeast | Warren | 47 | Hydraulic study for causeway north of Washington. | \$300 | Improve Road Conditions |
| Northeast | Warren | I-70 | Add interchange at Stracks Church Road. | \$18,000 | Increase economic growth and improve safety |
| Northeast | Lincoln | 61 | Construct new outer road from South Lincoln Drive in Troy to Rte. C. | \$4,080 | Increase economic growth and improve safety |
| Northeast | Lincoln | 61 | Construct remaining new outer roads from South Lincoln Drive in Troy to St. Charles County on disconnected sections. | \$14,400 | Increase economic growth and improve safety |
| Northeast | Warren | I-70 | Add railroad overpass near High Hill. | \$37,300 | Increase economic growth and improve safety |

* Amounts in 2019 Dollars (Uninflated)

Tier 2 - High-Priority Unfunded Road and Bridge Needs - 2019

| District | County | Route | Project Description | Estimated Funding Needed (\$1,000)* | Citizen's Guide Unfunded Needs Category |
|-------------------|--------------|-------|--|-------------------------------------|---|
| Northeast | Marion/Ralls | 61 | Update Hannibal Expressway study. | \$500 | Increase economic growth and improve safety |
| Kansas City Rural | Pettis | 65 | Construct new interchange north of Rte. 765 for truck route to Rte. 50 in Sedalia. | \$30,940 | Increase economic growth and improve safety |
| Kansas City Rural | Lafayette | I-70 | Interchange improvements at Rte. 131 in Odessa. | \$24,476 | Increase economic growth and improve safety |
| Kansas City Rural | Saline | 240 | Intersection improvements at Rte. C in Slater. | \$714 | Increase economic growth and improve safety |
| Kansas City Rural | Ray | 13 | Upgrade signals at Main Street and South Street in Richmond. | \$595 | Increase economic growth and improve safety |
| Kansas City Urban | Jackson | I-70 | Corridor improvements from downtown Kansas City to I-435. | \$323,300 | Major interstate reconstruction |
| Kansas City Urban | Jackson | I-70 | Corridor improvements from I-435 to I-470. | \$180,000 | Major interstate reconstruction |
| Central | Boone | I-70 | Interchange improvements at Rte. 63. | \$70,891 | Increase economic growth and improve safety |
| Central | Osage | 63 | Add new roadway from Rte. 50 to south of Westphalia. | \$35,397 | Increase economic growth and improve safety |
| Central | Callaway | 54 | Interchange improvements at I-70 in Kingdom City. | \$8,253 | Increase economic growth and improve safety |

* Amounts in 2019 Dollars (Uninflated)

Tier 2 - High-Priority Unfunded Road and Bridge Needs - 2019

| District | County | Route | Project Description | Estimated Funding Needed (\$1,000)* | Citizen's Guide Unfunded Needs Category |
|-----------|----------------|-------|--|-------------------------------------|---|
| Central | Cole/Callaway | 63/54 | Corridor improvements at the Missouri River Bridge. | \$3,360 | Increase economic growth and improve safety |
| Central | Boone | 63 | Interchange improvements at Rte. AC. | \$14,291 | Increase economic growth and improve safety |
| Central | Camden | 54 | Add lanes from the square to the western city limits in Camdenton. | \$6,128 | Increase economic growth and improve safety |
| Central | Phelps | I-44 | Pavement repair from Rolla to St. James. | \$19,627 | Major interstate reconstruction |
| Central | Moniteau | 50 | Construct new roadway from California to Tipton. | \$43,976 | Increase economic growth and improve safety |
| Central | Cole | 50 | Interchange improvements, widen ramps and upgrade pedestrian facilities at Country Club Drive in Jefferson City. | \$11,765 | Increase economic growth and improve safety |
| Central | Camden | MM | Roadway realignment in Camden County. Also includes Rte. TT and Rte. F. | \$25,020 | Increase economic growth and improve safety |
| St. Louis | St. Louis | I-270 | Corridor and interchange improvements from I-55/I-255 to the Chain of Rocks Bridge. | \$263,500 | Major interstate reconstruction |
| St. Louis | Jefferson | I-55 | Add lanes, bridge improvements, interchange improvements and pavement resurfacing from Rte. Z to Rte. 67. | \$76,810 | Major interstate reconstruction |
| St. Louis | St. Louis City | I-44 | Interchange improvements at Hampton Avenue, Kingshighway Boulevard, Vandeventer Avenue, and Jefferson Avenue. | \$59,000 | Increase economic growth and improve safety |

* Amounts in 2019 Dollars (Uninflated)

Tier 2 - High-Priority Unfunded Road and Bridge Needs - 2019

| District | County | Route | Project Description | Estimated Funding Needed (\$1,000)* | Citizen's Guide Unfunded Needs Category |
|-----------------|---------------------------------|-------|--|-------------------------------------|---|
| St. Louis | St. Louis City | I-70 | Interchange improvements at Branch Street. | \$5,000 | Increase economic growth and improve safety |
| St. Louis | Franklin | 47 | Roadway realignment at Rte. 50. | \$23,000 | Increase economic growth and improve safety |
| St. Louis | St. Charles | I-64 | Interchange improvements at I-70 and capital improvements from Rte. 364 to I-70/Rte. 61. | \$41,000 | Major interstate reconstruction |
| St. Louis | St. Louis | I-64 | Interchange improvements at Long Road. | \$33,000 | Increase economic growth and improve safety |
| St. Louis | St. Charles | I-70 | Roadway improvements, add ramps, add overpass, and interchange improvements from Convention Center to Cave Springs Road. | \$46,000 | Increase economic growth and improve safety |
| St. Louis | St. Louis | I-70 | Interchange improvements, roadway realignment, airport access improvements and bridge replacements from Cypress Road to Airflight Drive. | \$52,000 | Increase economic growth and improve safety |
| St. Louis | St. Louis City | I-64 | Interchange improvements at Grand Boulevard/Market Street. | \$18,000 | Increase economic growth and improve safety |
| St. Louis | St. Louis City | H | Corridor and safety improvements from Adelaide Avenue to Riverview Drive. | \$23,000 | Increase economic growth and improve safety |
| Southwest Rural | Benton Henry | 7 | Roadway realignment and intersection improvements from Tightwad to Warsaw and from Rte. 65 to the Camden County line. | \$13,800 | Increase economic growth and improve safety |
| Southwest Rural | Barry/Christian/Greene/Lawrence | 60 | Safety and capital improvements from Springfield to Monett and on Rte. 37 from Monett to Seligman. | \$7,000 | Increase economic growth and improve safety |

* Amounts in 2019 Dollars (Uninflated)

Tier 2 - High-Priority Unfunded Road and Bridge Needs - 2019

| District | County | Route | Project Description | Estimated Funding Needed (\$1,000)* | Citizen's Guide Unfunded Needs Category |
|-----------------|---------------------------|---------|---|-------------------------------------|---|
| Southwest Rural | Webster | 60 | Safety and capital improvements from Rogersville to east of Seymour. | \$30,000 | Increase economic growth and improve safety |
| Southwest Rural | Jasper | 66 | Pavement improvements and upgrade pedestrian facilities to comply with the ADA Transition Plan from St. Louis Avenue to Rangeline Road in Joplin. | \$5,587 | Improve Road Conditions |
| Southwest Rural | Jasper | 66 | Pavement improvements and upgrade pedestrian facilities to comply with the ADA Transition Plan from Schifferdecker Avenue to Maiden Lane in Joplin. | \$8,538 | Improve Road Conditions |
| Southwest Rural | Newton | I-44 | Add lanes from Rte. 43 (Main Street) to Loop 49 (Rangeline Road) in Joplin. | \$11,921 | Major interstate reconstruction |
| Southwest Rural | Jasper | I-44 | Ramp improvements at I-49 in Fidelity. | \$30,000 | Increase economic growth and improve safety |
| Southwest Rural | Webster | I-44 | Safety and capital improvements at various locations in Webster County. | \$1,500 | Increase economic growth and improve safety |
| Southwest Rural | Cedar/ Polk | 32 | Safety and capital improvements from Stockton to Bolivar. | \$4,000 | Increase economic growth and improve safety |
| Southwest Rural | Hickory | 54 | Intersection improvements at Rte. 65 in Preston. | \$1,707 | Increase economic growth and improve safety |
| Southwest Rural | Benton/Hickory/ Dallas | 65 | Capital and intersection improvements from Warsaw to Buffalo. | \$10,000 | Increase economic growth and improve safety |
| Southwest Rural | Various | Various | Update signals in the rural Southwest District. | \$5,000 | Increase economic growth and improve safety |

* Amounts in 2019 Dollars (Uninflated)

Tier 2 - High-Priority Unfunded Road and Bridge Needs - 2019

| District | County | Route | Project Description | Estimated Funding Needed (\$1,000)* | Citizen's Guide Unfunded Needs Category |
|-----------------|-----------|---------|---|-------------------------------------|---|
| Southwest Rural | Various | Various | Pavement resurfacing on low volume routes in the rural Southwest District. | \$10,000 | Improve Road Conditions |
| Southwest Rural | Jasper | 171 | Capital improvements from Rte. Z to Fir Road in Carl Junction. | \$25,000 | Increase economic growth and improve safety |
| Southwest Rural | Christian | EE | Safety and capital improvements from Rte. 160 in Highlandville to Rte. 65. | \$7,000 | Increase economic growth and improve safety |
| Southwest Rural | Jasper | 171 | Intersection improvements on McArthur Drive at Loop 49 (Madison Avenue) in Webb City. | \$6,700 | Increase economic growth and improve safety |
| Southwest Rural | Taney | NEW | Construct new roadway from Rte. 65 to Rte. BB near Hollister. | \$12,000 | Increase economic growth and improve safety |
| Southwest Rural | St. Clair | 13 | Intersection improvements in Lowry City. | \$1,529 | Increase economic growth and improve safety |
| Southwest Rural | Hickory | 54 | Intersection improvements at Rte. 83 and on Rte. 83 at Wheatland School. | \$1,350 | Increase economic growth and improve safety |
| Southwest Rural | McDonald | Bus 71 | Intersection improvements at Patterson Street in Anderson. | \$2,000 | Increase economic growth and improve safety |
| Southwest Rural | Dallas | 65 | Intersection improvements at Truman Road in Buffalo. | \$2,026 | Increase economic growth and improve safety |
| Southwest Rural | Dade | 160 | Intersection improvements at Rte. 39 in Greenfield. | \$1,000 | Increase economic growth and improve safety |

* Amounts in 2019 Dollars (Uninflated)

Tier 2 - High-Priority Unfunded Road and Bridge Needs - 2019

| District | County | Route | Project Description | Estimated Funding Needed (\$1,000)* | Citizen's Guide Unfunded Needs Category |
|-----------------|-----------|---------|--|-------------------------------------|---|
| Southwest Urban | Greene | Various | Arterial operational improvements in Springfield. | \$4,000 | Increase economic growth and improve safety |
| Southwest Urban | Greene | 60 | Capital improvements from Rte. 13 (Kansas Expressway) to Campbell Avenue in Springfield. | \$8,052 | Increase economic growth and improve safety |
| Southwest Urban | Christian | 14 | Intersection improvements at 6th Avenue in Ozark. | \$2,750 | Increase economic growth and improve safety |
| Southwest Urban | Christian | 14 | Capital improvements from 6th Avenue to 14th Avenue in Ozark. | \$4,000 | Increase economic growth and improve safety |
| Southwest Urban | Greene | I-44 | Add lanes from Rte. 13 (Kansas Expressway) to Loop 44 (Glenstone Avenue) in Springfield. | \$30,000 | Major interstate reconstruction |
| Southwest Urban | Greene | 60 | Add interchanges and access roads to convert to freeway from Farm Road 213 to Rte. 125 in Rogersville. | \$15,555 | Increase economic growth and improve safety |
| Southwest Urban | Christian | 65 | Add lanes from Rte. 14 to Bus. 65 (South Street)/Rte. F in Ozark. | \$10,200 | Increase economic growth and improve safety |
| Southwest Urban | Christian | 65 | Add lanes from Rte. CC to Rte. 14 in Ozark. | \$13,477 | Increase economic growth and improve safety |
| Southwest Urban | Greene | MM | Add railroad overpass west of Rte. 60 in Republic. | \$15,000 | Increase economic growth and improve safety |
| Southwest Urban | Christian | CC | Roadway realignment from Main Street to Rte. 160 north of Nixa. | \$6,000 | Increase economic growth and improve safety |

* Amounts in 2019 Dollars (Uninflated)

Tier 2 - High-Priority Unfunded Road and Bridge Needs - 2019

| District | County | Route | Project Description | Estimated Funding Needed (\$1,000)* | Citizen's Guide Unfunded Needs Category |
|-----------------|----------------|-------|--|-------------------------------------|---|
| Southwest Urban | Christian | CC | Capital improvements from Fremont Road to Rte. 65 in Ozark. | \$4,000 | Increase economic growth and improve safety |
| Southwest Urban | Greene | AB | Safety improvements from Rte. 160 to Rte. EE in Willard. | \$2,000 | Increase economic growth and improve safety |
| Southwest Urban | Greene | 125 | Intersection improvements at Rte. OO in Strafford. | \$1,500 | Increase economic growth and improve safety |
| Southwest Urban | Greene | FF | Intersection improvements at Weaver Road in Battlefield. | \$2,000 | Increase economic growth and improve safety |
| Southeast | Cape Girardeau | 61 | Intersection improvements from Rte. D to Barton Square in Jackson. | \$1,155 | Increase economic growth and improve safety |
| Southeast | Butler | 67 | Add lanes to provide four lane highway from County Road 272 to the Arkansas State Line | \$250 | Increase economic growth and improve safety |
| Southeast | Butler | 67 | Upgrade to four lane freeway from Rte. 160 to the City of Neelyville. | \$31,351 | Increase economic growth and improve safety |
| Southeast | Wright | 95 | Intersection improvements from Red Spring Road to Bus. 60 in Mountain Grove. | \$9,230 | Increase economic growth and improve safety |
| Southeast | Dunklin | 412 | Add lanes to provide four lane highway from County Road 562 to Rte. O. | \$25,799 | Increase economic growth and improve safety |
| Southeast | New Madrid | EE | Add railroad overpass at St. Jude's Industrial Park. | \$4,960 | Increase economic growth and improve safety |

* Amounts in 2019 Dollars (Uninflated)

Tier 2 - High-Priority Unfunded Road and Bridge Needs - 2019

| District | County | Route | Project Description | Estimated Funding Needed (\$1,000)* | Citizen's Guide Unfunded Needs Category |
|-----------|----------------|--------|--|-------------------------------------|---|
| Southeast | Ste. Genevieve | 32 | Intersection improvements at I-55. | \$877 | Increase economic growth and improve safety |
| Southeast | Howell | 63 | Add lanes to provide four lane highway from Bill Virdon Blvd. in West Plains to Rte. PP. | \$12,383 | Increase economic growth and improve safety |
| Southeast | Cape Girardeau | I-55 | Interchange improvements at Rte. 74. | \$23,458 | Increase economic growth and improve safety |
| Southeast | Howell | Bus 63 | Intersection improvements at North Howell Avenue in West Plains. | \$1,404 | Increase economic growth and improve safety |
| Southeast | Iron/Madison | 72 | Add shoulders from Rte. 21 to Rte. 67. | \$8,776 | Increase economic growth and improve safety |
| Southeast | Stoddard | Bus 60 | Capital improvements from Arvin Road to One Mile Road in Dexter. | \$11,554 | Increase economic growth and improve safety |
| Southeast | New Madrid | EE | Bridge replacement over I-55. | \$8,679 | Improve Bridge Conditions |
| Southeast | Perry | I-55 | Add interchange 1.3 miles north of Rte. T. | \$22,462 | Increase economic growth and improve safety |
| Southeast | Howell | 160 | Intersection improvements at Rte. BB. | \$418 | Increase economic growth and improve safety |
| Southeast | Oregon | 142 | Raise roadway on east side of Eleven Point River Bridge. | \$3,862 | Improve Road Conditions |

* Amounts in 2019 Dollars (Uninflated)

Tier 2 - High-Priority Unfunded Road and Bridge Needs - 2019

| District | County | Route | Project Description | Estimated Funding Needed (\$1,000)* | Citizen's Guide Unfunded Needs Category |
|-----------|----------------|-------|--|-------------------------------------|---|
| Southeast | St. Francois | 8 | Intersection improvements from Hawthorne Street to Rte. 67 in Desloge. | \$3,466 | Increase economic growth and improve safety |
| Southeast | Cape Girardeau | 61 | Intersection improvements from I-55 in Fruitland to Rte. D. | \$3,466 | Increase economic growth and improve safety |
| Southeast | Douglas/Ozark | 5 | Add shoulders from Rte. A in Douglas County to Rte. MM in Ozark County. | \$8,149 | Increase economic growth and improve safety |
| Southeast | Douglas | 14 | Pavement improvements, add rumblestrips and guardrail upgrades from Rte. O to the Beaver Creek Bridge. | \$1,066 | Increase economic growth and improve safety |
| Southeast | Iron | 32 | Safety improvements from the west intersection of Rte. 49 to the east intersection of Rte. 49. | \$4,301 | Increase economic growth and improve safety |
| Southeast | Bollinger | B | Add rumblestrips from Rte. 72 to Rte. 34. | \$3,761 | Increase economic growth and improve safety |
| Southeast | Cape Girardeau | 61 | Intersection improvements at South Shawnee Boulevard in Jackson. | \$731 | Increase economic growth and improve safety |
| Southeast | Cape Girardeau | 61 | Intersection improvements at South Donna Drive in Jackson. | \$731 | Increase economic growth and improve safety |
| Southeast | Reynolds | F | Add new bridge over Logan Creek. | \$2,170 | Improve Bridge Conditions |
| Southeast | Howell | 63 | Add lanes to provide four lane highway from Rte. PP to County Road 8820. | \$12,819 | Increase economic growth and improve safety |

* Amounts in 2019 Dollars (Uninflated)

Tier 2 - High-Priority Unfunded Road and Bridge Needs - 2019

| District | County | Route | Project Description | Estimated Funding Needed (\$1,000)* | Citizen's Guide Unfunded Needs Category |
|--------------------------------|----------------------|---------------|---|-------------------------------------|---|
| Southeast | Iron | 21 | Safety improvements from Rte. E to Rte. CC. | \$3,687 | Increase economic growth and improve safety |
| Southeast | New Madrid | I-55 | Add interchange at Rte. U. | \$17,689 | Increase economic growth and improve safety |
| Southeast | Perry/Cape Girardeau | 61 | Add shoulders from County Road 411 in Perry County to County Road 540 in Cape Girardeau County. | \$3,761 | Increase economic growth and improve safety |
| Southeast | Wayne/Butler | T | Add rumblestrips from Rte. D in Wayne County to Rte. 60 in Butler County. | \$1,881 | Increase economic growth and improve safety |
| Southeast | Cape Girardeau | Bloomfield Rd | Bridge replacement over I-55. | \$3,596 | Improve Bridge Conditions |
| Southeast | Carter | A | Bridge replacement over Cane Creek. | \$620 | Improve Bridge Conditions |
| Southeast | St. Francois | 67 | Interchange improvements at Rte. 32 in Leadington. | \$4,622 | Increase economic growth and improve safety |
| Southeast | Ripley | K | Safety improvements from Little Black River to Ripley County Road K-3. | \$1,229 | Increase economic growth and improve safety |
| Southeast | Carter | N | Bridge replacement over Middle Brushy Creek. | \$620 | Improve Bridge Conditions |
| Southeast | Butler | M | Safety improvements at Butler County Road 459. | \$1,843 | Increase economic growth and improve safety |
| Tier 2 Statewide Total: | | | | \$2,221,171 | |

* Amounts in 2019 Dollars (Uninflated)

SUMMARY

Tier 2 High-Priority Unfunded Road and Bridge Needs - 2019

Amounts in Thousands (2019 Dollars-Uninflated)

| District | Improve Bridge Conditions | Improve Road Conditions | Major Interstate Reconstruction | Increase Economic Growth and Improve Safety | Total |
|-------------------|---------------------------|-------------------------|---------------------------------|---|--------------------|
| Northwest | \$32,768 | \$24,852 | - | \$48,000 | \$105,620 |
| Northeast | - | \$300 | - | \$113,190 | \$113,490 |
| Kansas City Rural | - | - | - | \$56,725 | \$56,725 |
| Kansas City Urban | - | - | \$503,300 | - | \$503,300 |
| Central | - | - | \$19,627 | \$219,081 | \$238,708 |
| St. Louis | - | - | \$381,310 | \$259,000 | \$640,310 |
| Southwest Rural | - | \$24,125 | \$11,921 | \$161,612 | \$197,658 |
| Southwest Urban | - | - | \$30,000 | \$88,534 | \$118,534 |
| Southeast | \$15,685 | \$3,862 | - | \$227,279 | \$246,826 |
| Total | \$48,453 | \$53,139 | \$946,158 | \$1,173,421 | \$2,221,171 |