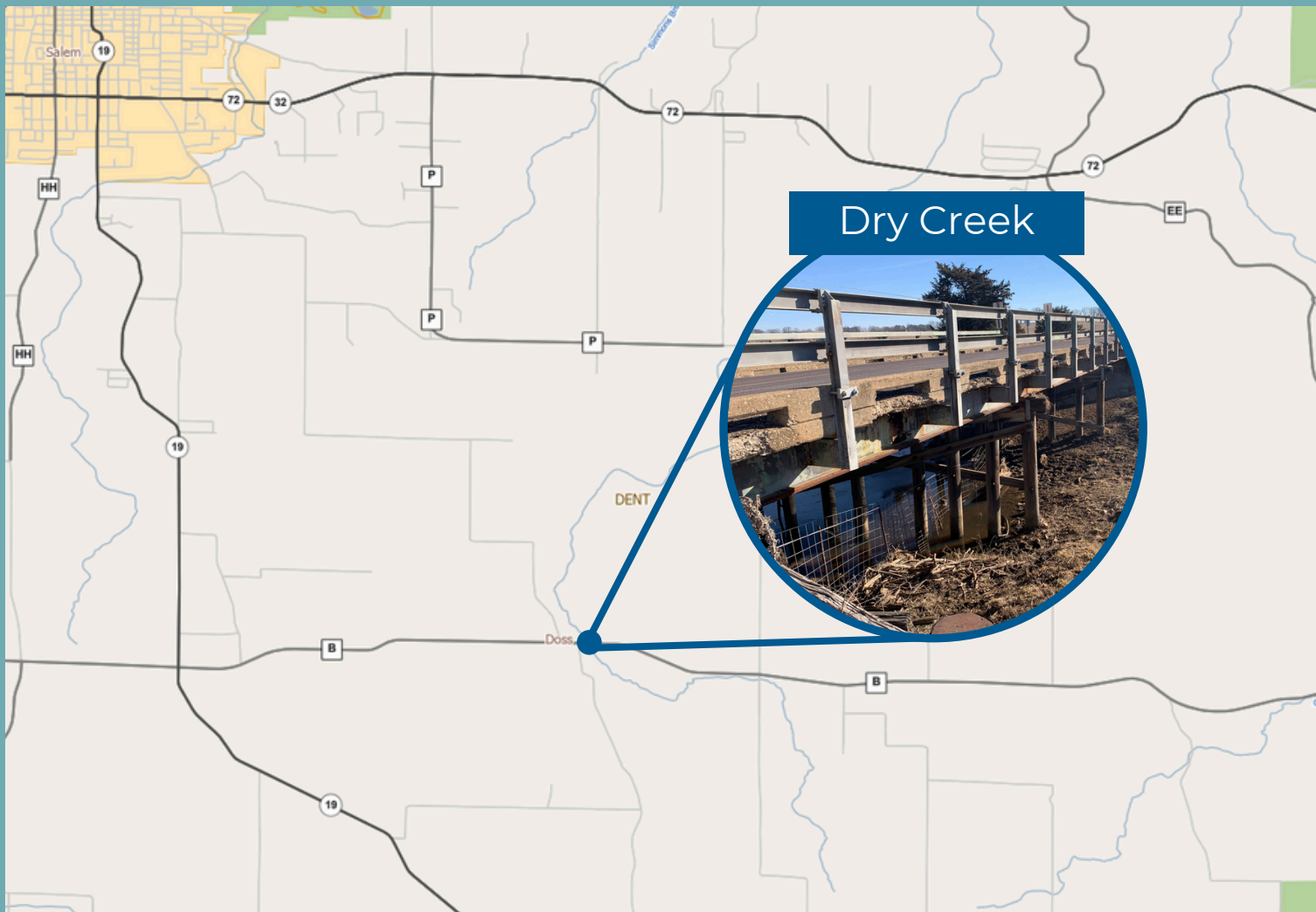


ROUTE B BRIDGE REPLACEMENT

Dent County



PROJECT HIGHLIGHTS

Type of work: Bridge replacement.

Construction expected: 2026.

Estimated cost: \$1.8 million including engineering and construction costs, subject to change.

Scan to visit the
project's webpage.



Project Manager Mia Peters
CDCR@modot.mo.gov
888 ASK MODOT (1-888-275-6636)



PROJECT DETAILS

Why is this work needed?

The Dent County Route B bridge over Dry Creek, south of Salem, is slated for replacement in 2026. Built in 1939, the bridge is in poor condition, showing signs it has reached the end of its useful life, and in need of replacement.

Proposed improvements

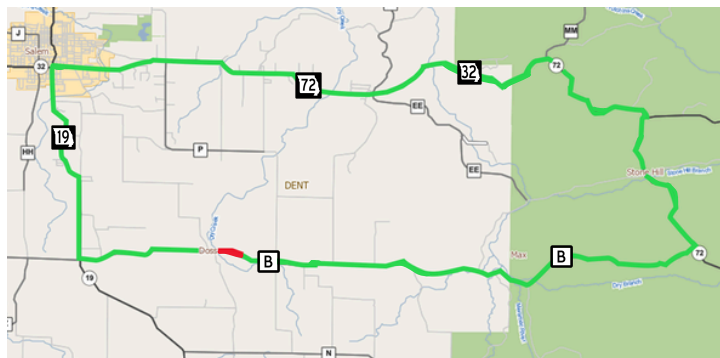
The new bridge will:

- Be 26-feet wide - 4 feet wider than the current structure.
- Have new guardrail installed at all four corners.
- Have new bridge rail that meets current standards.
- Have new approach pavement.

Traffic Impacts

Construction will require a full roadway closure.

- The closure is anticipated to last an estimated 124 calendar days, subject to change.
- A signed detour will direct motorists to use Missouri Route 19, Missouri Route 32, and Missouri Route 72.



Current Proposed Timeline

- May 2026:** Contractors may submit competitive bids.
- June 2026:** Missouri Highways and Transportation Commission may award contract.
- August 2026:** If awarded in June, earliest contractor may begin work.
- Dec. 2026:** Anticipated project completion.

Stay up-to-date

Visit the link below (or scan QR code) for more information about the project and sign up for updates.



Project Manager Mia Peters
 CDCR@modot.mo.gov
 888 ASK MODOT (1-888-275-6636)