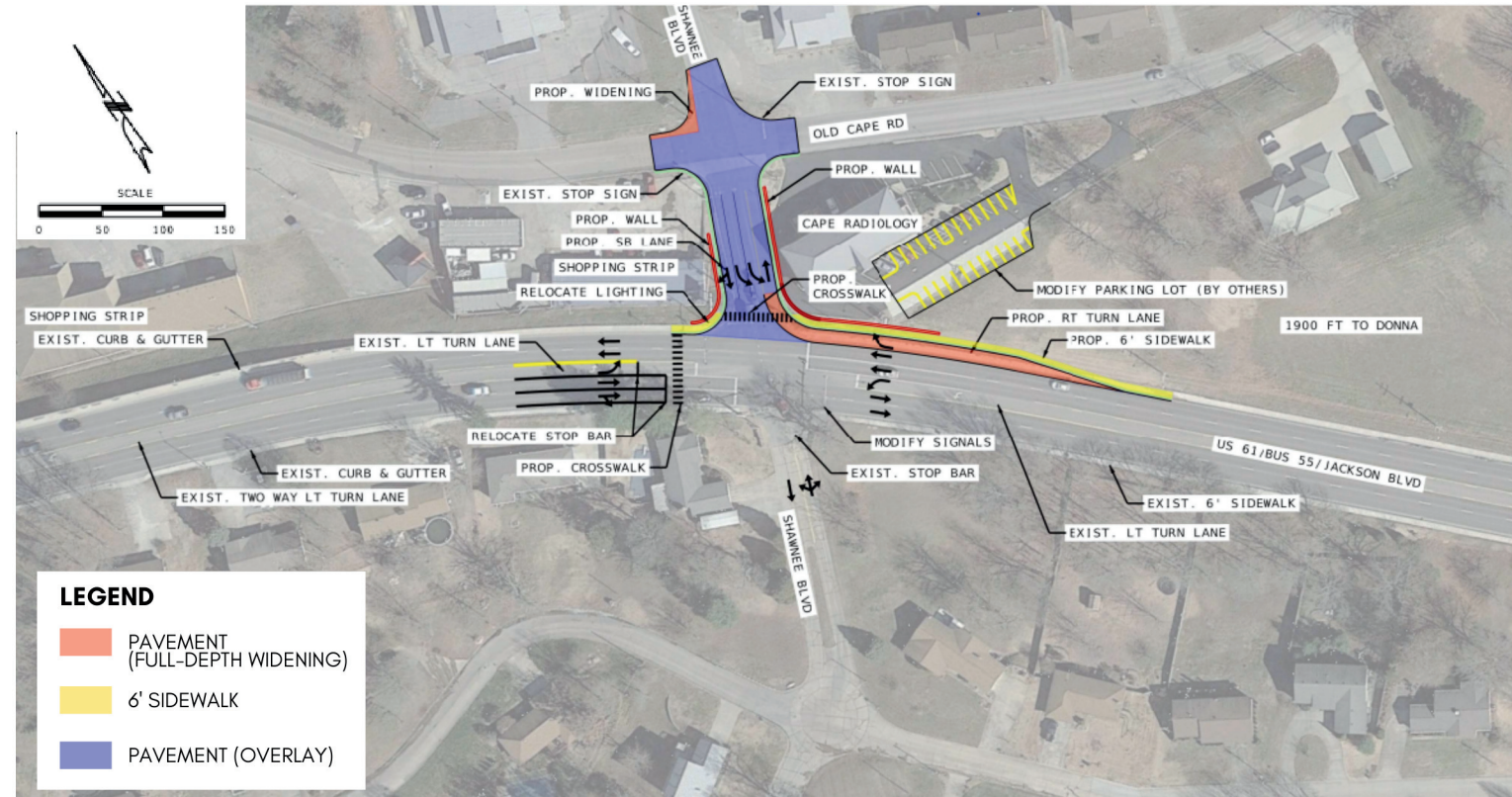
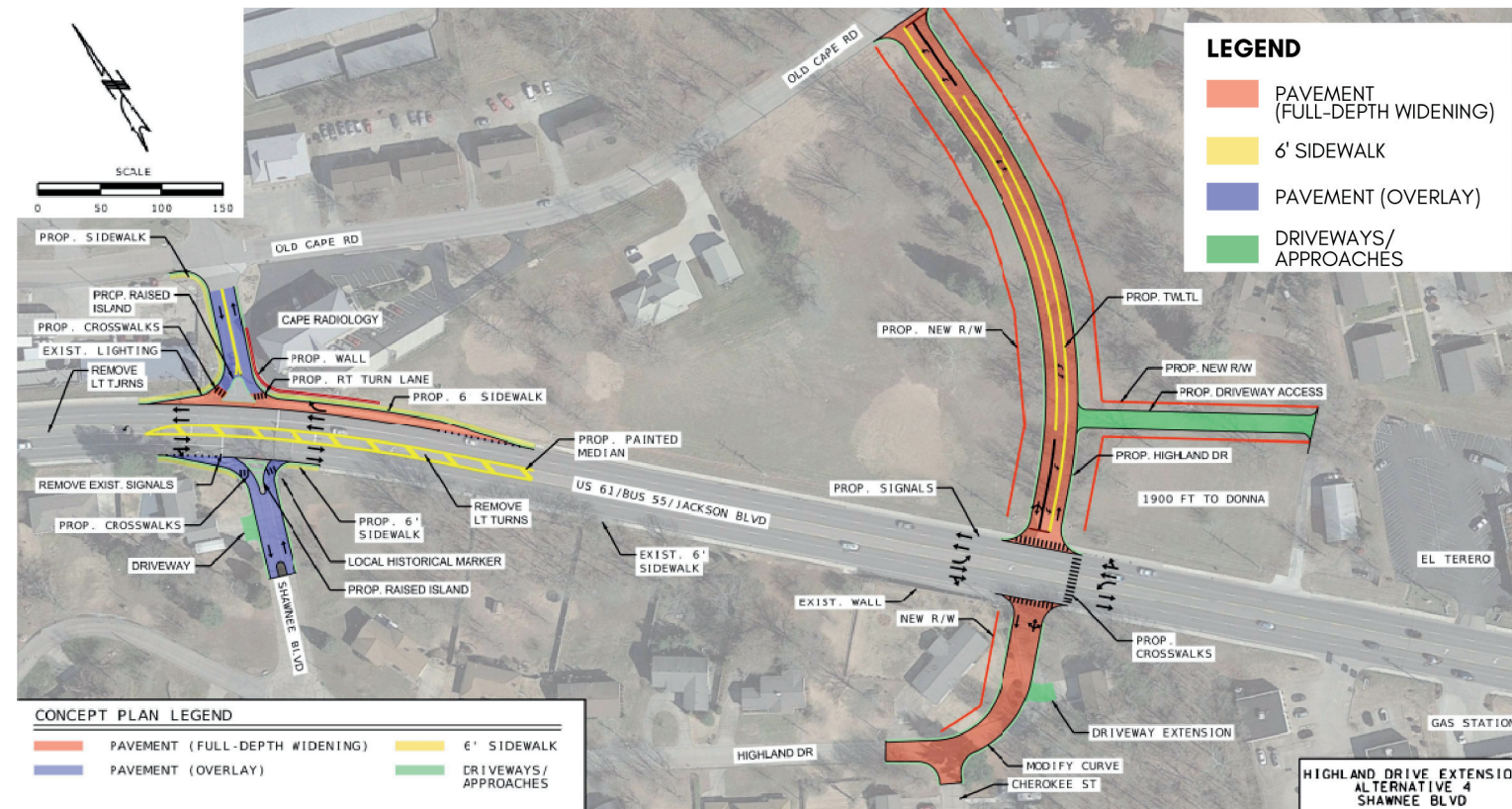


INTERSECTION IMPROVEMENT STUDY AT U.S. 61/SHAWNEE BLVD.

Alternate 2: Widen Shawnee to 4 Lanes



Alternate 4: Highland Drive Extension



PUBLIC MEETING | NOV. 16, 2023

ABOUT

The Missouri Department of Transportation is conducting three studies on the Route 61 corridor in Jackson, Missouri. The studies include a corridor study on Route 61 from the north interchange near Fruitland to the Route 25 intersection in Jackson, and intersection improvement studies at Route 61/Shawnee Boulevard and Route 61/Donna Drive.

NEXT STEPS

Once completed, the Route 61 corridor study and the intersection improvement study for U.S. 61/Shawnee Boulevard will help MoDOT develop conceptual plans and cost estimates. These improvements are not currently funded for construction. However, the studies will allow MoDOT to move forward as funding becomes available.

Improvements at U.S. 61/Donna Drive are funded.

CONTACT US

For more information, please contact MoDOT Project Manager Curt Woolsey at (417) 469-6232, MoDOT Area Engineer Chris Crocker at (573) 380-1658 or MoDOT's Customer Service Center toll-free at 1-888-ASK-MODOT (275-6636). The project website is available at www.modot.org/61CorridorJackson.

ROUTE 61 CORRIDOR STUDY

The study will extend from the north interchange near Fruitland to the Route 25 intersection in Jackson. Alternatives include intersection improvements and a possible center turn lane. This study excludes the Deerwood intersection, the Hubble Creek Bridge replacement, and the roundabout near the courthouse.

INTERSECTION IMPROVEMENT STUDY AT U.S. 61/SHAWNEE BOULEVARD

Options include improving the existing intersection or relocating the signal to the east.

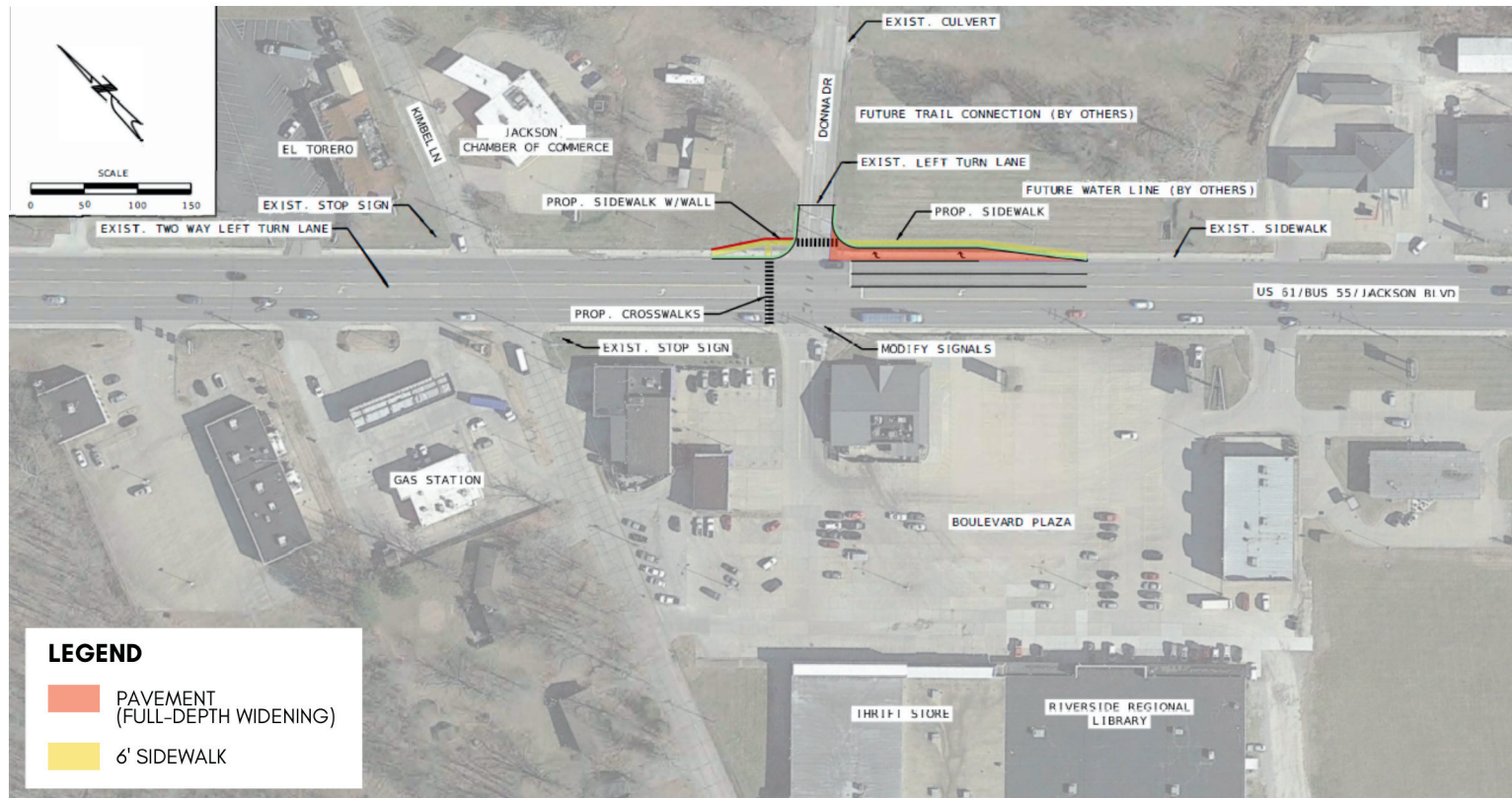
INTERSECTION IMPROVEMENT STUDY AT U.S. 61/DONNA DRIVE

Options include improving the existing intersection and relocating traffic from the Kimbel Lane intersection to the existing Donna Drive intersection. Improvements in this location are included in the fiscal year 2027 budget.

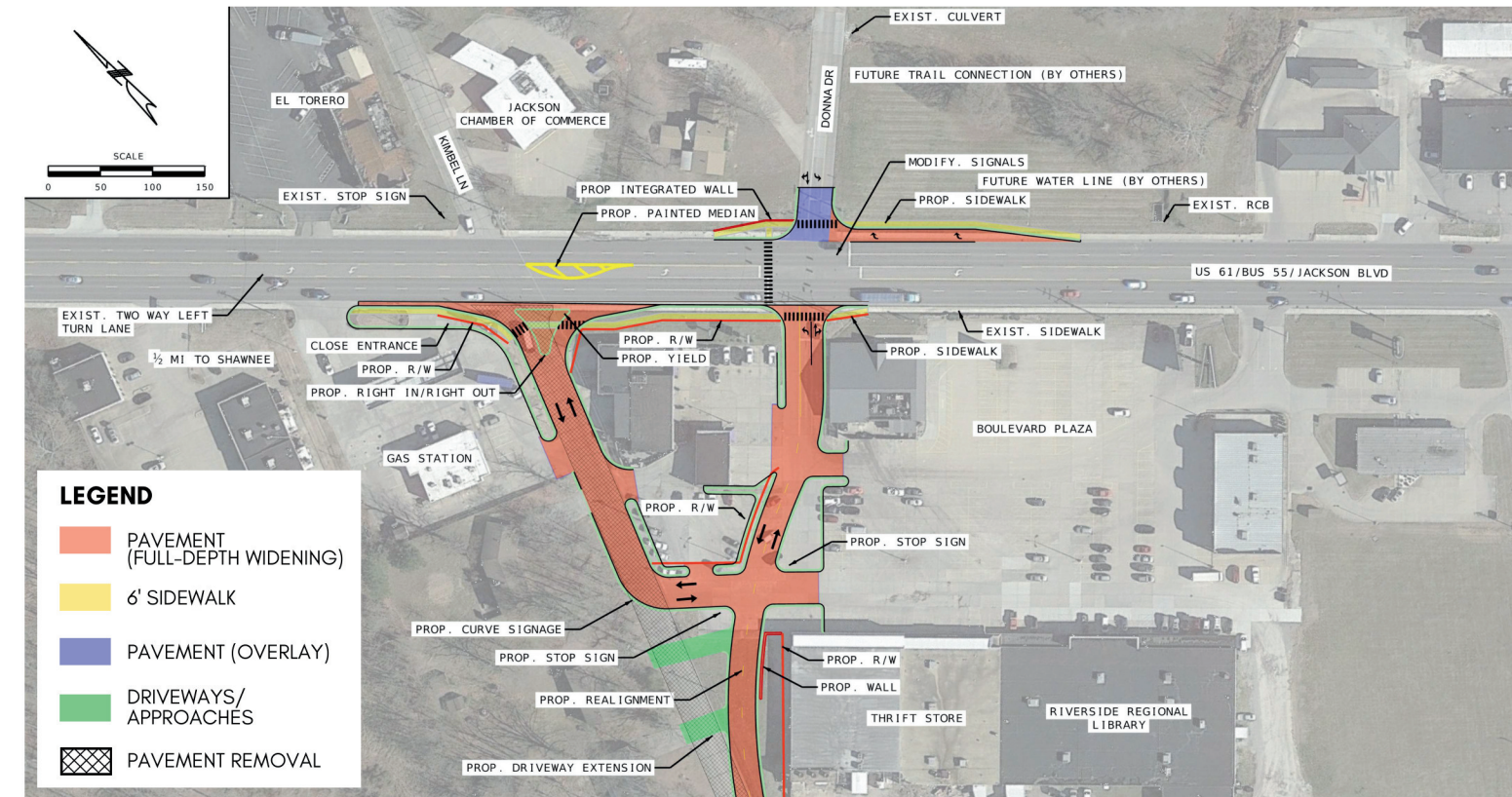


INTERSECTION IMPROVEMENT STUDY AT U.S. 61/DONNA DRIVE

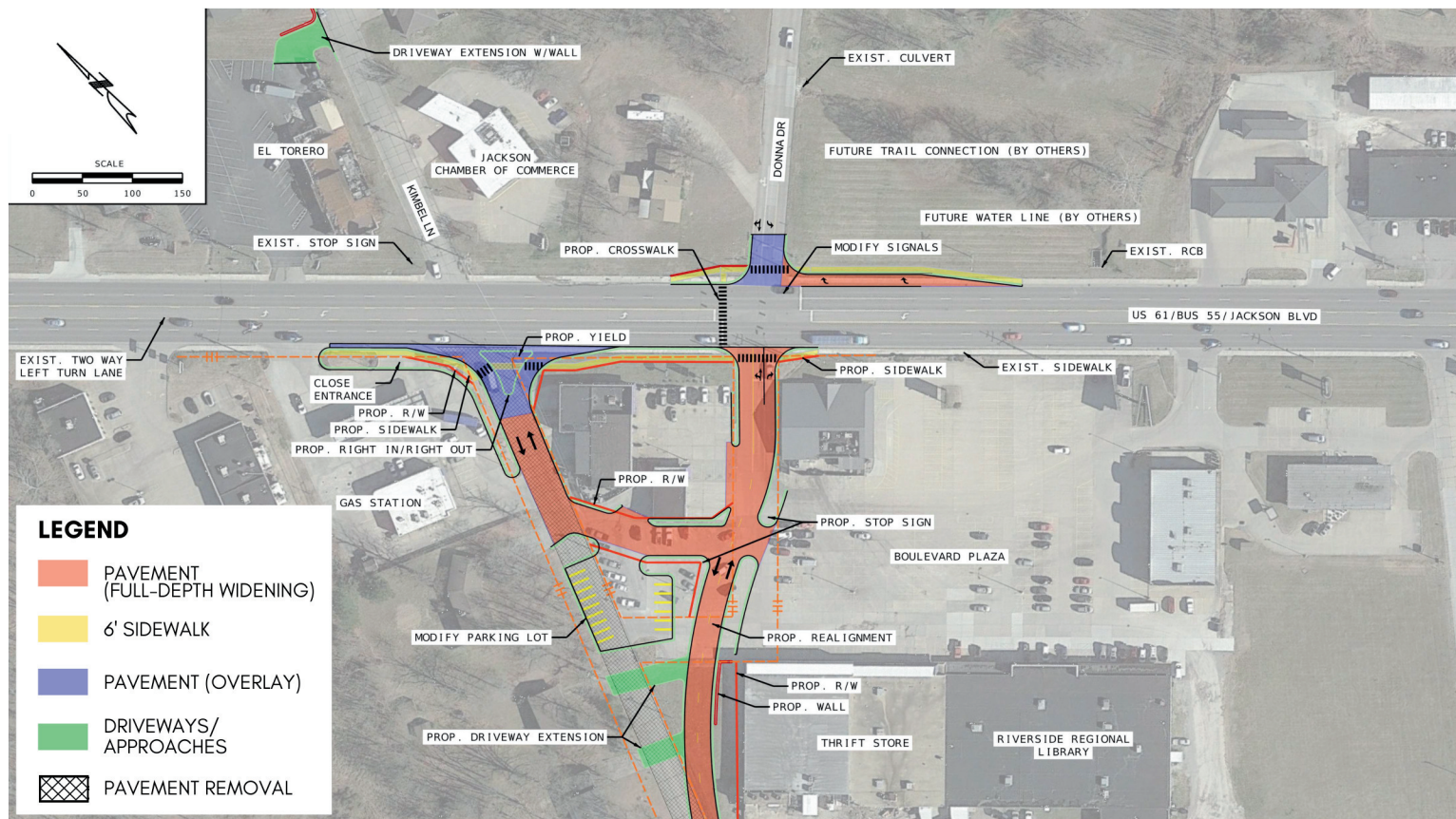
Alternate 1: Westbound Right Turn Lane



Alternate 2B: Kimbel Right In/Right Out - South



Alternate 2A: Kimbel Right In/Right Out - North



Alternate 2C: Kimbel Closure

