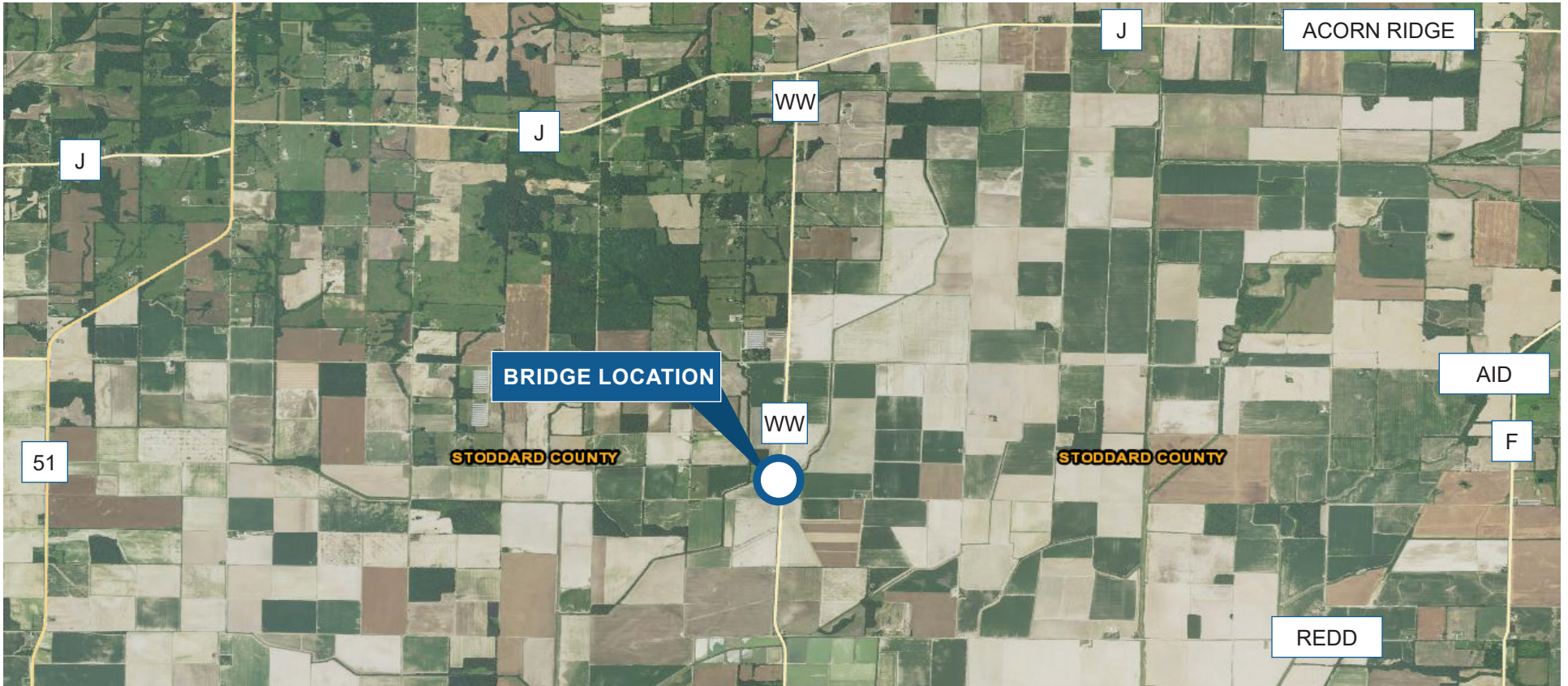


Route WW over Drainage Ditch #26



TIMELINE

The project includes replacing the deck of the Route WW bridge over Drainage Ditch #26. Construction could begin as early as spring 2022, with completion anticipated by fall 2022.

TRAFFIC IMPACTS

As work is underway, the roadway will be closed in the vicinity of the structure for approximately three months. Drivers should seek alternate routes during the bridge closure.

CONTACT US

For more information, please contact Project Manager Pete Berry at (417) 469-6242 or Area Engineer David Wyman at (573) 472-9021.

