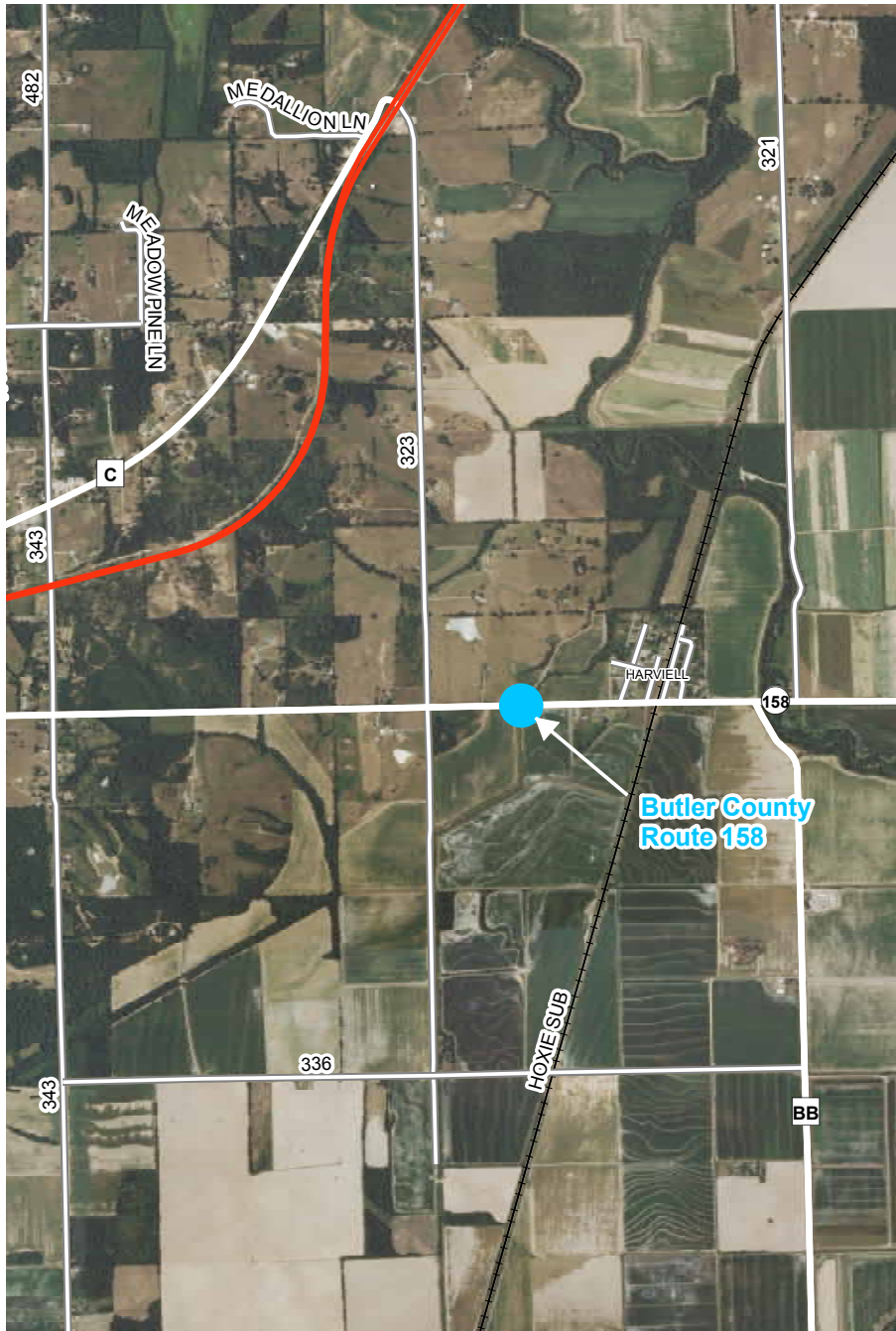


Route 158



Routes 142 & 158

December 2014

BUTLER COUNTY

Project Description

The project will include replacing the bridges on Route 142 over Hart Ditch and Long Slough Ditch, as well as a bridge on Route 158 over the drainage ditch, located 0.7 miles west of Route BB in Butler County.

Timeline

Construction of the new bridges will begin in summer 2015. Work is expected to be completed in approximately four months, weather permitting.

Traffic Impacts

Route 142 and Route 158 will be closed to through traffic in the vicinity of the bridges for the duration of the construction. Property owners within the project limits will have access into their properties during this time.

Contact Information

For more information, please contact Project Manager Pete Berry at (417) 469-6242 or Transportation Project Designer David Blalock at (573) 472-5295.



Missouri Department of Transportation | Southeast District
1-888 ASK MODOT (275-6636) | www.modot.org/southeast
2675 N. Main St. | Sikeston, Mo.

Route 142

