



# Southeast District

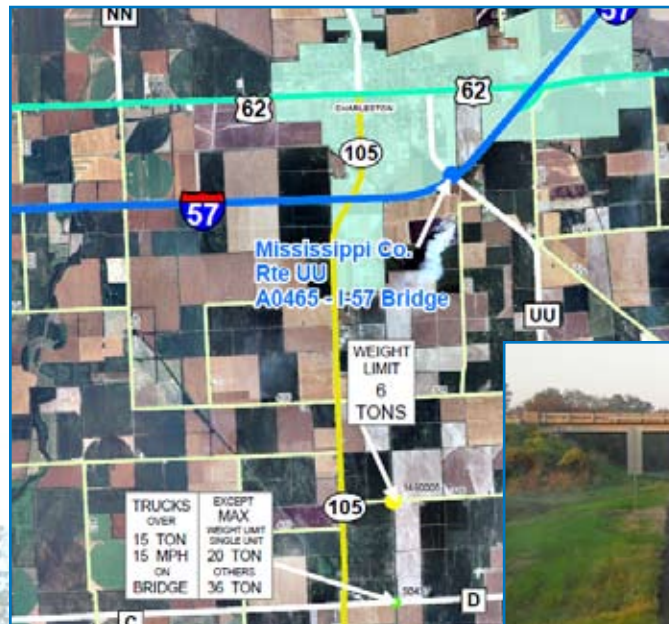
800 BetterBridges



## Community Briefing

### Safe & Sound Bridge Improvement Program

## Route UU Bridge over Interstate 57 in Mississippi County



### What's the problem?

The deck of the Route UU bridge over Interstate 57 is aging and in poor condition.

### What's the solution?

The existing deck will be replaced with a new one.



### What impact will that have on my travel?

During construction, Route UU will be closed. I-57 traffic will experience a reduced speed and lane reduction in the work zone during certain stages of the work.

### What's the timeframe?

Work could get underway as early as November 2009. Once construction begins the project should be completed in approximately 90 days.

For More Information  
Southeast District  
Safe & Sound Team:

Project Manager  
Andy Meyer  
(573) 472-5296  
andrew.meyer@modot.  
mo.gov

Transportation Project  
Designer  
Jeff Wachter  
(573) 472-5294  
jeffery.wachter@modot.  
mo.gov

Inter. Highway Designer  
Mark Pfeffer  
(573) 472-5294  
mark.pfeffer@modot.  
mo.gov





# Southeast District

800  
**BetterBridges**

## PROGRAM FACTS

---

- The program will replace or rehabilitate more than 800 of MoDOT's most worn-out bridges in five years.
- About 30 percent of the bridges on the program will be packaged in small groups based on location, size or type and put out for bids in what is called a Modified Design-Bid-Build process. It will help accelerate construction schedules and enable at least 100 bridges to be under construction early in 2009.
- More than 550 bridges have been targeted for total replacement. Those bridges have been packaged in a design-build contract. The contract has been awarded to KTU Constructors. Work is anticipated to begin soon.
- The use of one team to design and build the entire project is particularly effective on large complicated projects that offer significant opportunities for innovation in order to save money and speed completion.
- MoDOT will dedicate about one-third of its annual existing federal bridge replacement funds to finance the program without a tax increase or additional funding. Payments are expected to be in the neighborhood of \$50 million per year.
- There are 10,276 bridges on the Missouri state highway system – 7th largest total nationwide.

- Approximately 1,100 of them are in poor/serious condition. The Safe & Sound initiative will address most of these bridges.
- The complete list of projects, maps, detour information and other details can be found at [www.modot.mo.gov/safeandsound](http://www.modot.mo.gov/safeandsound)

## ROAD CLOSURES

---

Road closures during many of the S&S projects are part of being a good steward of taxpayer money. For example, MoDOT is replacing a bridge on Route A in Scott County. The project is around \$400,000. If we were to build a temporary bridge and keep the road open, it would add another \$250,000 to the cost of the project. By closing that road, we're able to repair another bridge in need of attention. And, that's never more important than when nearly 1,100 bridges statewide are in poor condition.

MoDOT is committed to working with citizens to schedule work during times with minimal impacts to communities, but the inconvenience of road closures may not be avoidable. Just as it's an inconvenience to slow down for road work, it is an inconvenience to take a detour for a bridge replacement, and we understand that. But there are about 1,600 bridges in Missouri that are structurally deficient. This is a great opportunity to address half of those, and it is simply not affordable without road closures. We ask for the understanding and cooperation of the traveling public as we work to address repairs as quickly as possible.