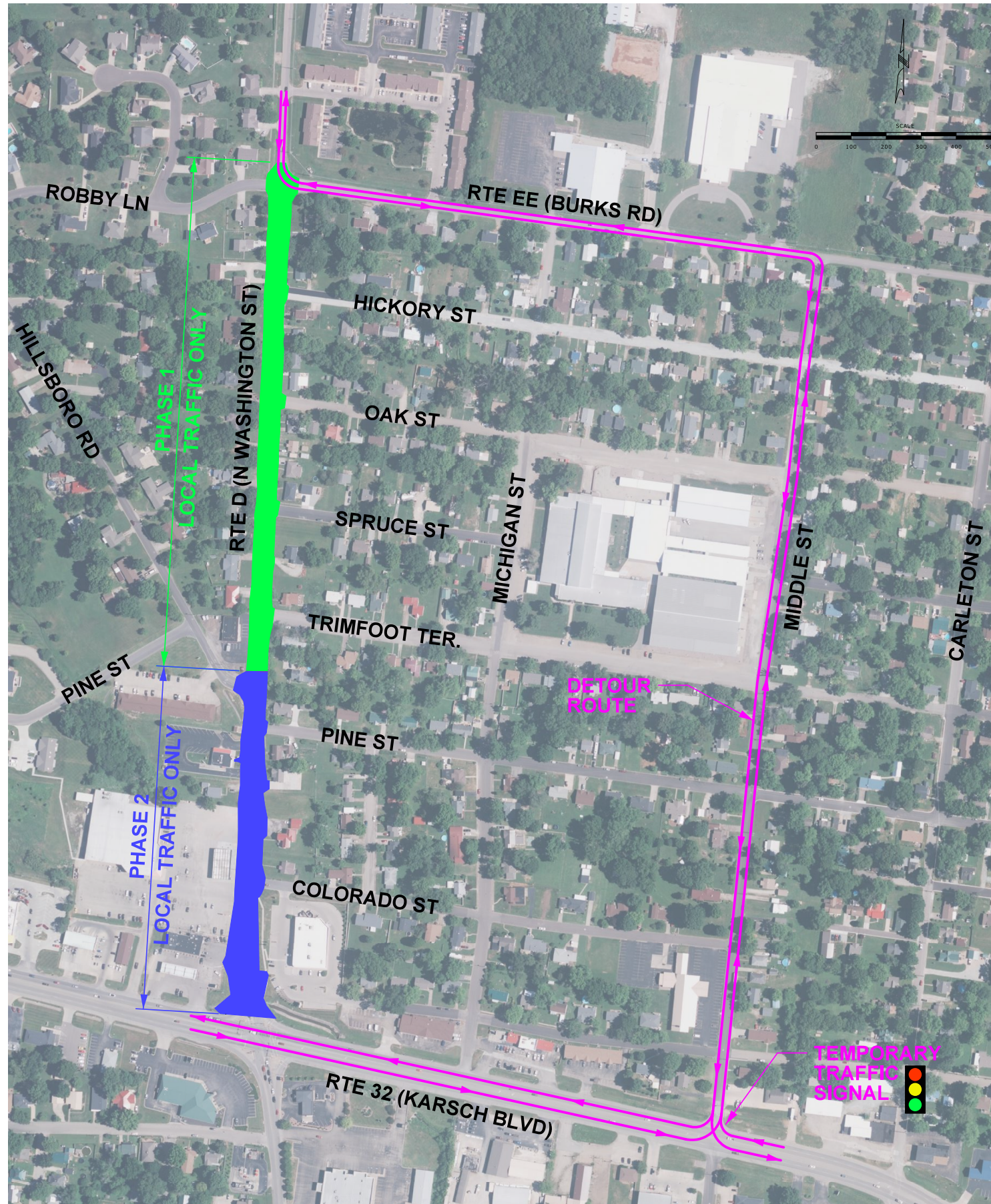


DETOUR MAP



PUBLIC MEETING | SEPTEMBER 4, 2025

Route D in Farmington, MO

ST. FRANCOIS COUNTY



PROJECT SUMMARY

The project includes improving Route D (North Washington Street) from Route EE (Burks Road) to Route 32 (Karsch Boulevard) in Farmington, MO. The project will widen Route D with a two-way, left-turn lane from Hillsboro Road to Route 32; extend the right-turn lane to better accommodate the southbound to westbound movement from Route D onto Route 32; rebuild the roadway (full-depth replacement) from Route EE to Route 32 to address the current pavement conditions; and improve drainage. The box culvert crossing Route D near Route 32 will also be extended to the west to provide more clearance for vehicles making a right turn onto Route 32.

Additionally, it will update pedestrian facilities on the east-side of Route D to meet Americans with Disabilities Act (ADA) requirements. As part of the safety improvement project, access management measures will be implemented to reduce conflict points along the corridor.

PROJECT TIMELINE

Tentatively, the project is expected to be let in spring 2027. Construction could begin as early as summer 2027. Completion is anticipated by fall 2028.

TRAFFIC IMPACT ALTERNATIVES

Alternate one consists of closing Route D, and alternate two consists of staging construction to keep Route D open to traffic.



ALTERNATE 1

Alternate 1 consists of closing Route D. A signed detour along Route EE, Middle Street and Route 32 would be provided, and construction would be underway for 10-12 months.



ALTERNATE 2

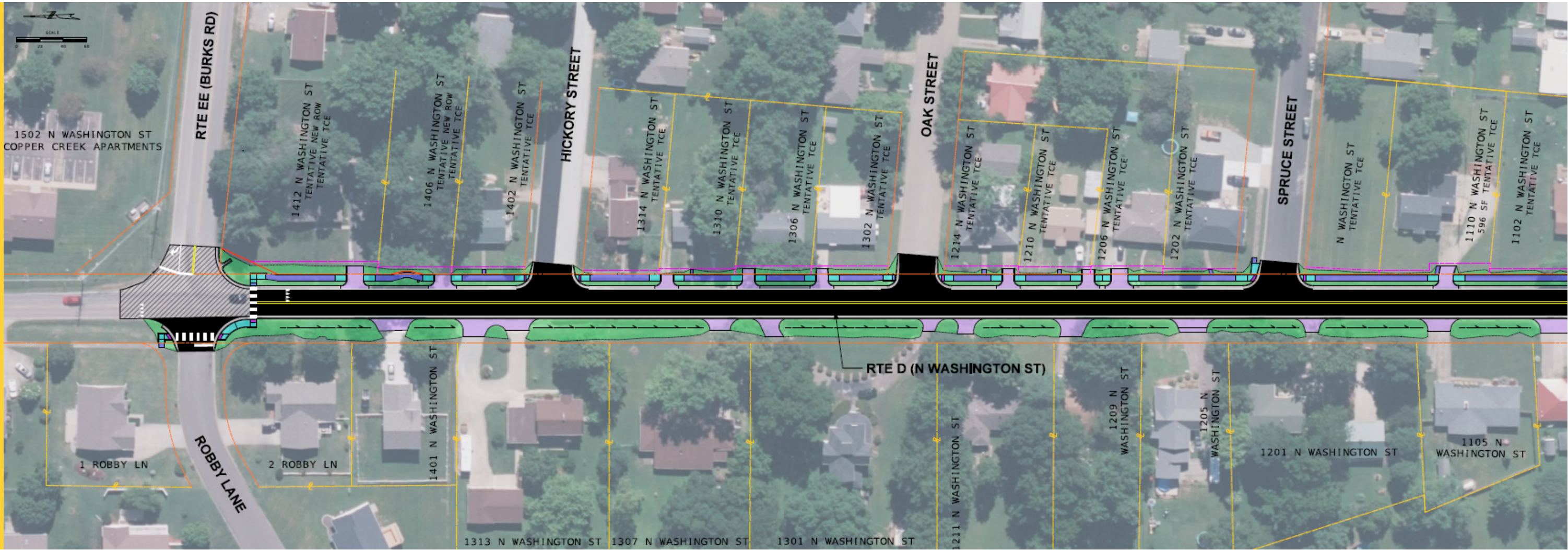
Alternate two consists of staging construction to keep Route D open to traffic. While the roadway would remain open, the construction timeline would be extended to 15 months.

CONTACT US

For more information, please contact MoDOT Project Manager Chris Crocker at (573) 380-1658 or MoDOT Area Engineer Corbin Carlton at (573) 258-0278. To learn more or comment, please visit the project webpage at www.modot.org/DFarmington.



ROUTE D (N. WASHINGTON ST)
FROM ROUTE EE TO SPRUCE ST



ROUTE D (N. WASHINGTON ST)
FROM TRIMFOOT TERRACE TO ROUTE 32 (KARSCH BLVD)

