

# Route D in Farmington, MO

ST. FRANCOIS COUNTY



## PROJECT SUMMARY

The project includes improving Route D (North Washington Street) from Route EE (Burks Road) to Route 32 (Karsch Boulevard) in Farmington, MO. The project will widen Route D with a two-way, left-turn lane from Hillsboro Road to Route 32; extend the right-turn lane to better accommodate the southbound to westbound movement from Route D onto Route 32; rebuild the roadway (full-depth replacement) from Route EE to Route 32 to address the current pavement conditions; and improve drainage. The box culvert crossing Route D near Route 32 will also be extended to the west to provide more clearance for vehicles making a right turn onto Route 32.

Additionally, it will update pedestrian facilities on the east-side of Route D to meet Americans with Disabilities Act (ADA) requirements. As part of the safety improvement project, access management measures will be implemented to reduce conflict points along the corridor.

## PROJECT TIMELINE

Tentatively, the project is expected to be let in spring 2027. Construction could begin as early as summer 2027. Completion is anticipated by fall 2028.

## TRAFFIC IMPACT ALTERNATIVES

Alternate one consists of closing Route D, and alternate two consists of staging construction to keep Route D open to traffic.

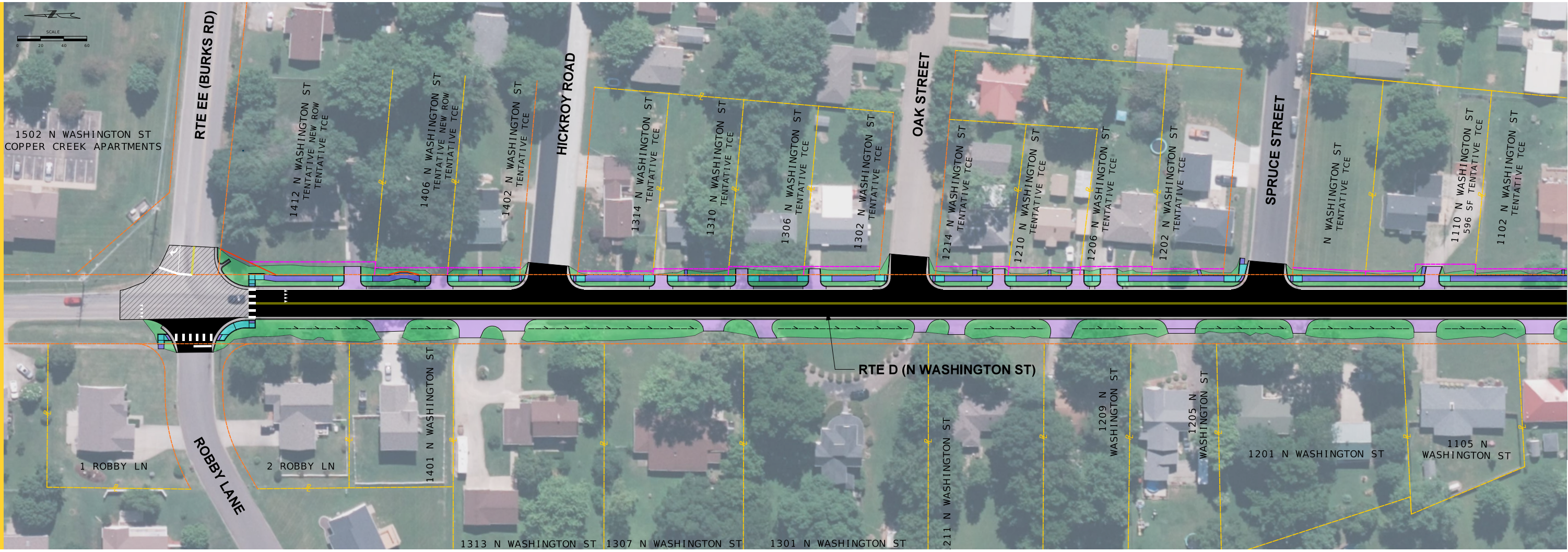
- ✔ **ALTERNATE 1**  
 Alternate 1 consists of closing Route D. A signed detour along Route EE, Middle Street and Route 32 would be provided, and construction would be underway for 10-12 months.
- ✔ **ALTERNATE 2**  
 Alternate two consists of staging construction to keep Route D open to traffic. While the roadway would remain open, the construction timeline would be extended to 15 months.

## CONTACT US

For more information, please contact MoDOT Project Manager Chris Crocker at (573) 380-1658 or MoDOT Area Engineer Corbin Carlton at (573) 258-0278. To learn more or comment, please visit the project webpage at [www.modot.org/DFarmington](http://www.modot.org/DFarmington).



**ROUTE D (N. WASHINGTON ST)**  
FROM ROUTE EE TO SPRUCE ST



**ROUTE D (N. WASHINGTON ST)**  
FROM TRIMFOOT TERRACE TO ROUTE 32 (KARSCH BLVD)

