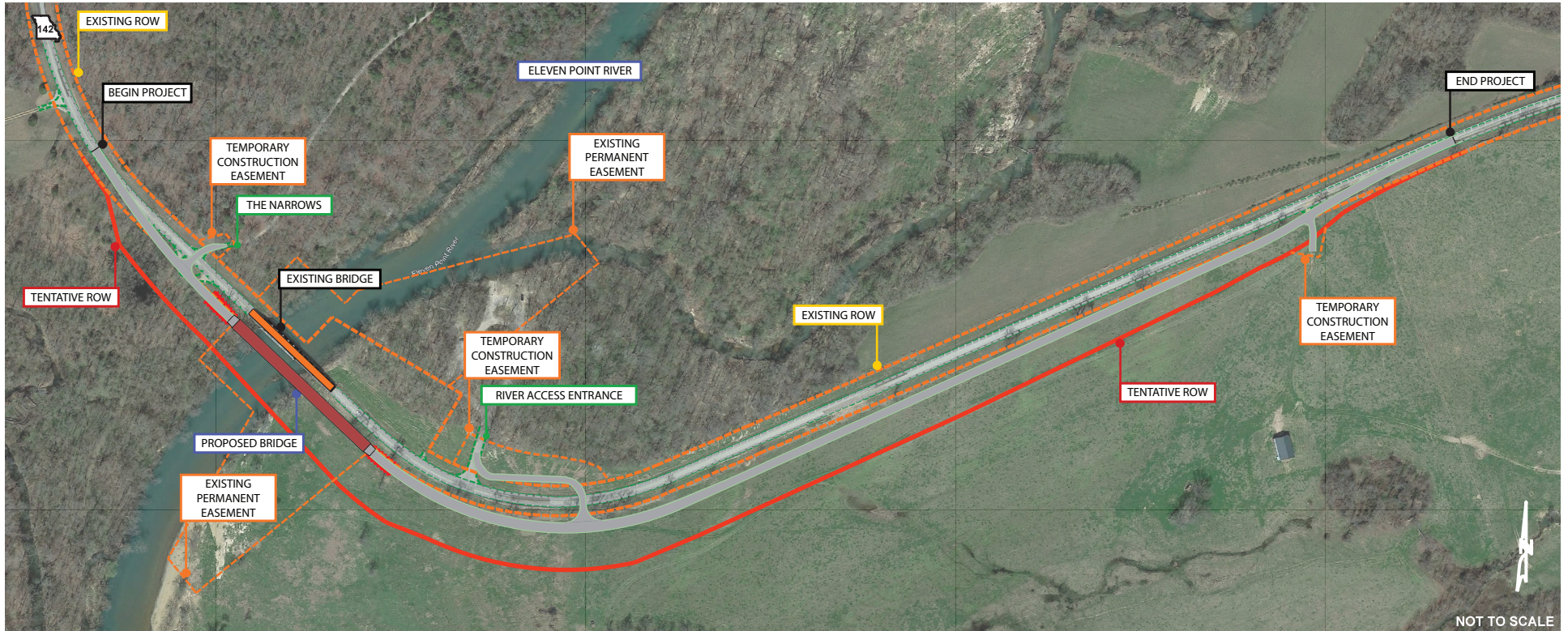


Route 142 over the Eleven Point River near Billmore, MO



TIMELINE

Improvements could begin as early as spring 2023, with completion anticipated by the end of summer 2024. The project includes replacing the bridge over the Eleven Point River, as well as realigning and raising the roadway.

TRAFFIC IMPACTS

Traffic will continue to use the existing structure during construction. The new bridge and roadway will be built on a new alignment. As the new pavement is tied into the existing pavement, flaggers or temporary signals will be present to guide traffic through the work zone.

CONTACT US

For more information, please contact Project Manager Pete Berry at (417) 469-6242 or Area Engineer Elquin Auala (417) 469-6286.

