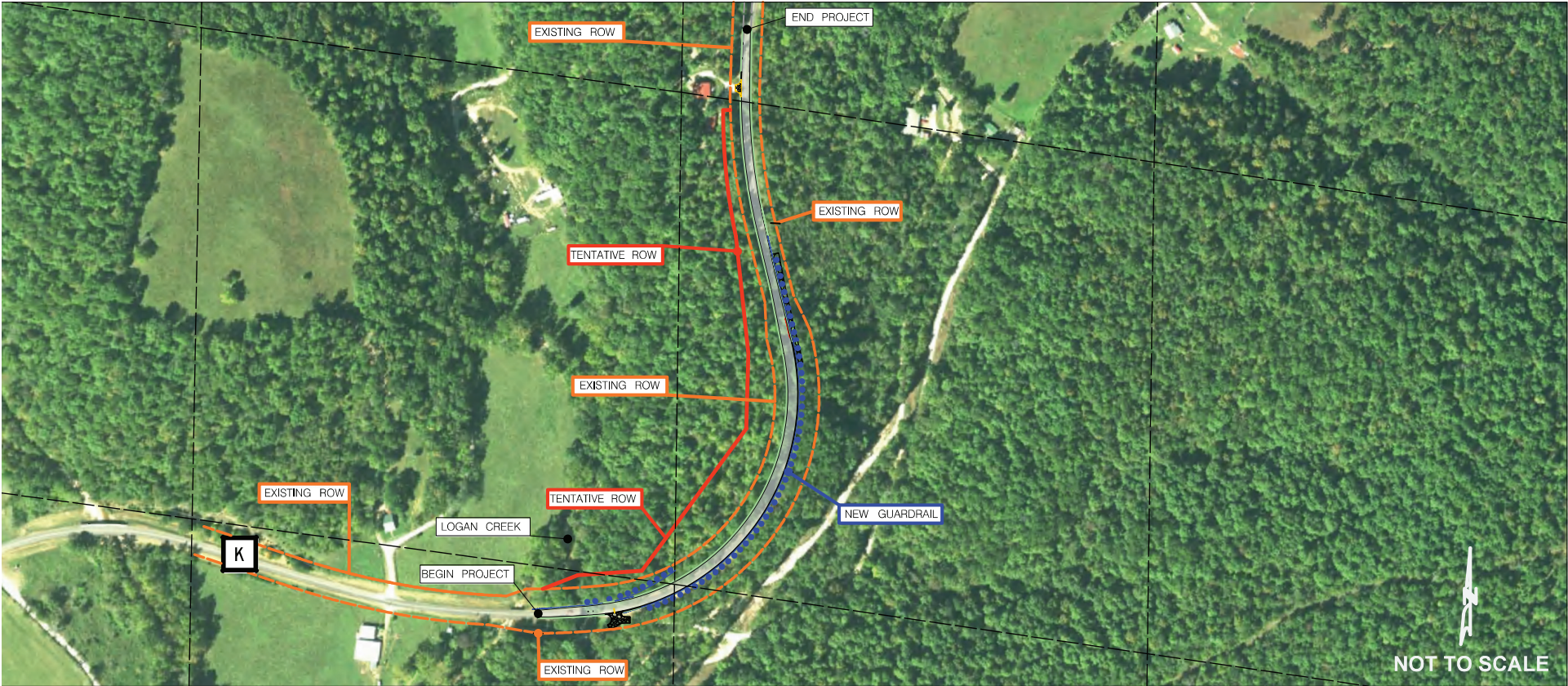


# Route K Improvements between Ellington and Annapolis, MO

## PROJECT DESCRIPTION

The proposed project includes improving curves on Route K in Reynolds and Iron Counties. Improvements will extend from 2.5 miles east of Route 21 near Ellington, Missouri to 1.3 miles west of Route 49 near Annapolis, Missouri.



### TIMELINE

Work could begin as early as spring 2023, with completion anticipated by late 2023. The project includes widening along the inside of one curve. Right of way acquisition will be required at the curve widening location only.

### TRAFFIC IMPACTS

Traffic will continue to use the existing roadway during construction. As the new pavement is tied into the existing pavement, flaggers will be present to guide traffic through the work zone.

### CONTACT US

For more information, please contact Project Manager Pete Berry at (417) 469-6242, Area Engineer Elquin Auala at (417) 469-6286 or Area Engineer Chris Crocker at (573) 380-1658.

## IMPROVEMENTS TO CURVES

Nine curves within the project limits will be improved. The proposed project includes widening, adding edgeline rumble stripes and adding guardrail to one curve, as well as adding edgeline rumble stripes to eight other curves. The image below shows the curve locations to be improved.

