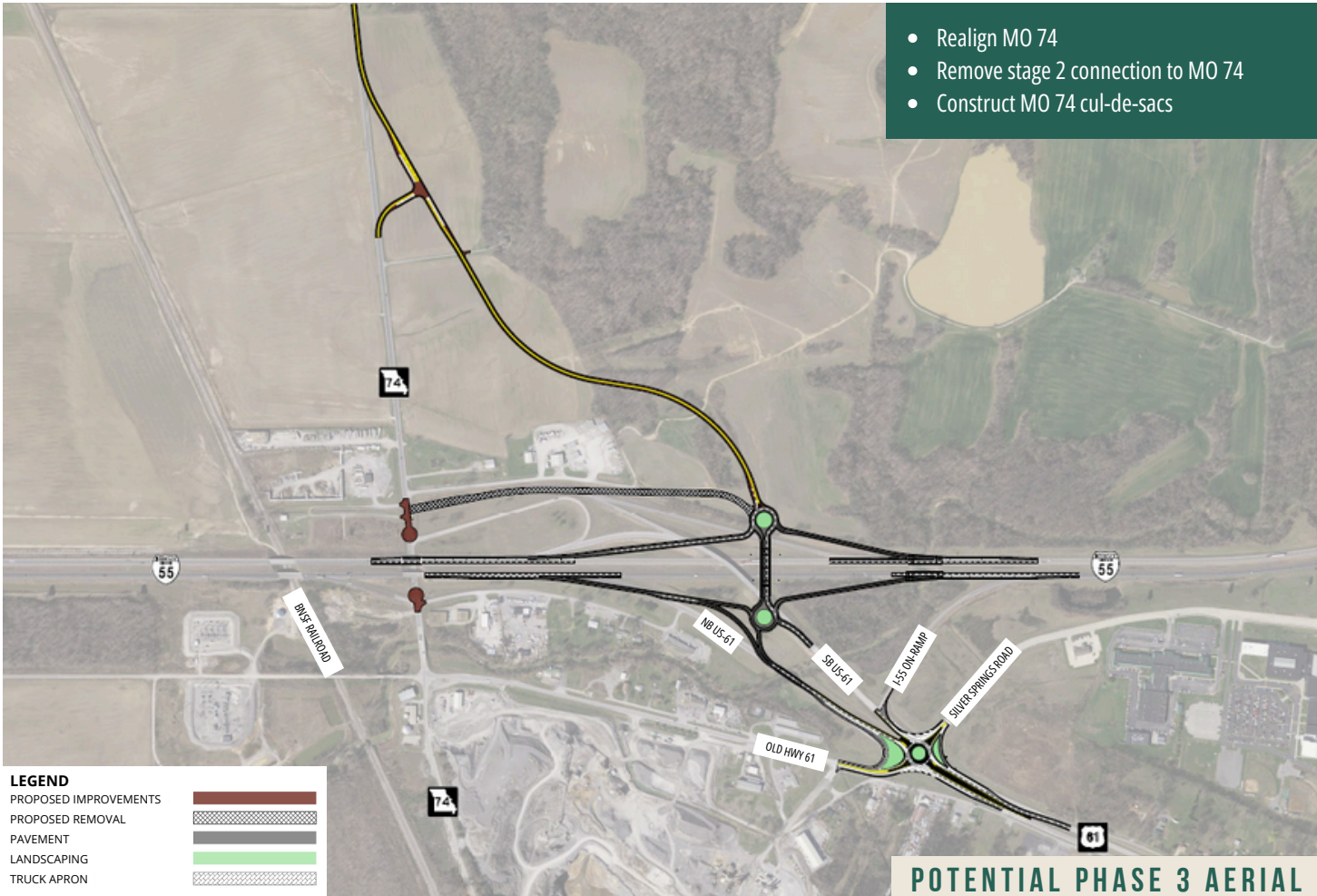
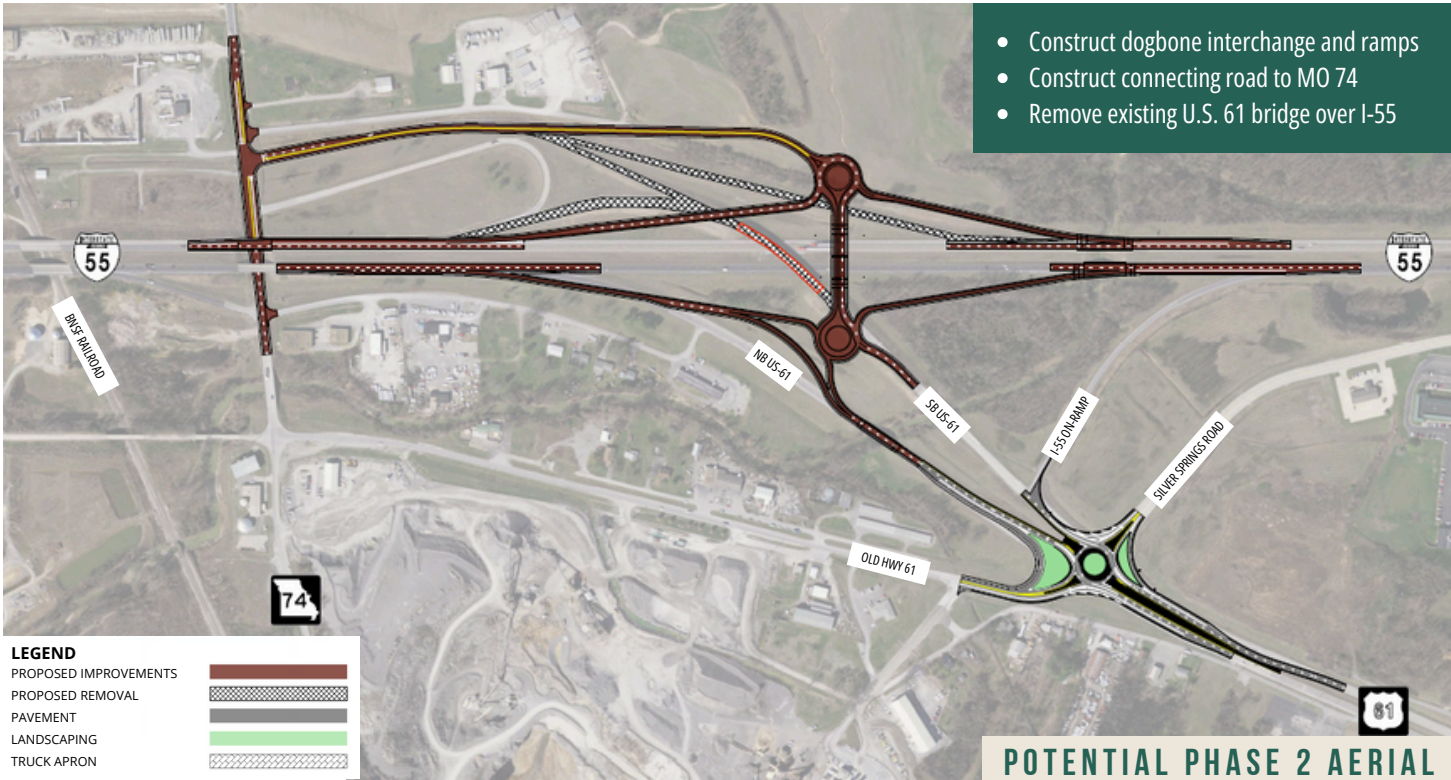


PHASE 2 AND PHASE 3: CONTINGENT ON FUTURE FUNDING



PUBLIC MEETING | AUGUST 27, 2024

ABOUT

The Exit 93 interchange connects southbound traffic on Kingshighway to Interstate 55 or Route 74. The bridge in this location, referred to as a “flyover,” is in poor condition.

After MoDOT and consulting engineers reinspected the flyover bridge, it was determined the bridge could be rehabilitated to extend its life. Along with the rehabilitation of the flyover bridge, two bridges on northbound I-55 will be rehabilitated—this includes the bridge over BNSF railroad near Route 74 and the bridge over Route 74. Additionally, the project will replace the signals at Silver Springs Road with a two-lane roundabout in an effort to improve safety. The project will also close access ramps at Route 74.

Completion of the roundabout will represent one phase of the improvement plan for the interchange. Additional phases could be completed as funding becomes available in the future.

TENTATIVE TIMELINE

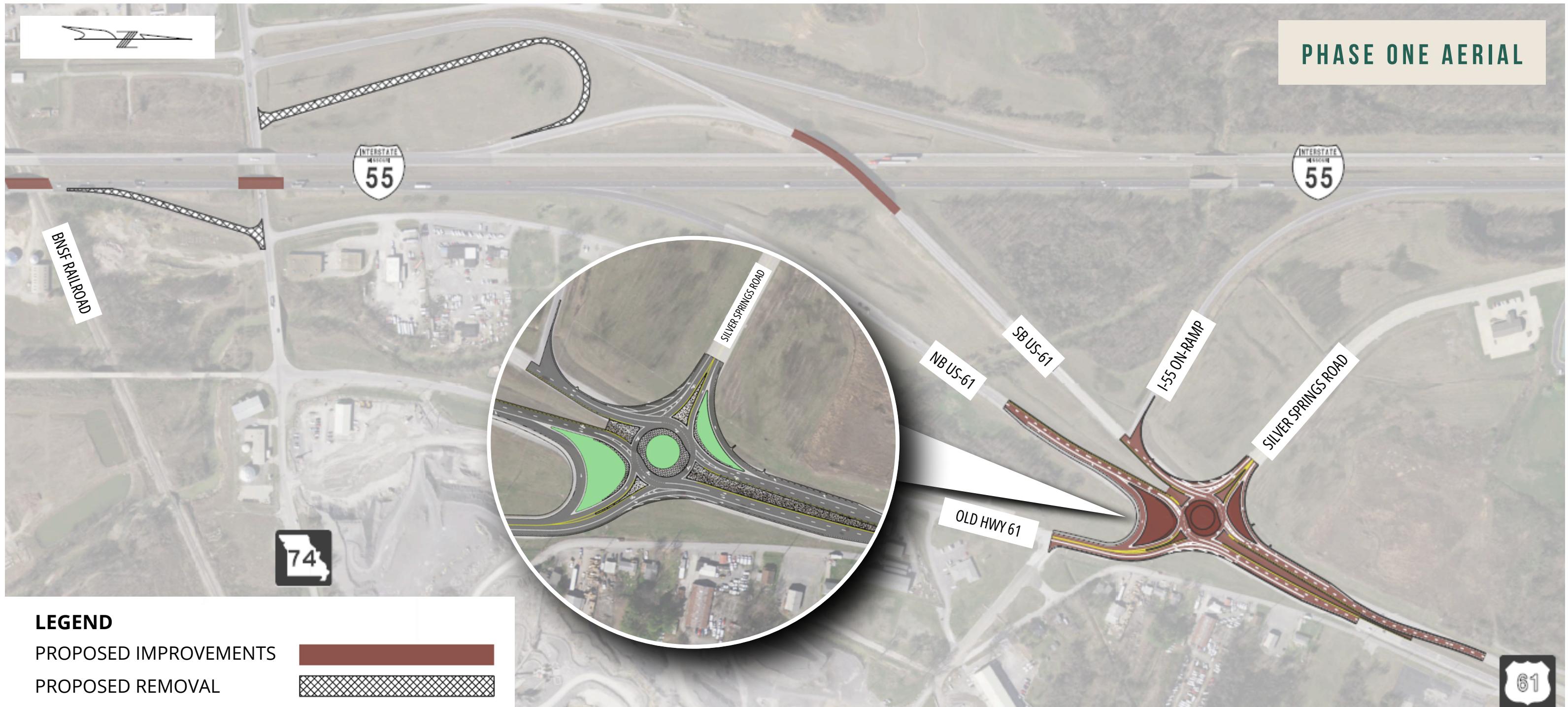


FOR MORE INFORMATION

For more information, please contact Project Manager Tim Pickett at (573) 472-9003, Area Engineer Chris Crocker at (573) 380-1658 or MoDOT's Customer Service Center toll-free at 1-888-ASK MODOT (275-6636).







Phase 1 improvements include: constructing a two-lane roundabout at Bus. 61/Silver Springs; rehabilitating the Route 61 bridge over I-55, northbound I-55 bridge over BNSF railroad, and northbound I-55 bridge over MO 74; and removing the southbound I-55 merge from MO 74 and removing Exit 93A.

In anticipation of the flyover closure, signals will be installed at the Route 74/I-55 interchange. Motorists will be encouraged to use this access to I-55 during construction. The construction of the roundabout at Silver Springs Road and Business 61 will be staged to allow movement through the intersection.

When navigating a multi-lane roundabout, observe roadside signs and pavement markings. These will direct you to the correct lane. Do not change lanes within a roundabout. Do not enter a roundabout if an emergency vehicle is approaching a roundabout. Never turn left when entering a roundabout. When exiting, be sure to use your right turn signal.