

U. S. Route 67/ Future I-57

BUTLER COUNTY: PHASES 3 & 4

PROJECT SUMMARY

The Future I-57 project in Butler County will include upgrading U.S. Route 67 to interstate standards from the Route 160/158 interchange south of Poplar Bluff, Missouri to the MO/AR state line. This will primarily be accomplished by constructing four new lanes west of the existing U.S. 67 pavement and converting the existing pavement into an east outer road. The entire project limits are broken down into five phases: Phases 1A and 1B, as well as Phases 2-4.

Phases 1A has been completed. Phases 1B and 2 will include upgrading U.S. 67 to four lanes from near the Route 160/158 interchange to County Road 352. The public hearing will focus on Phases 3 and 4.

Phase 3 of the U.S. 67 project includes future access at Neelyville, Missouri and upgrading an approximately five-mile section of U.S. 67 to four lanes from County Road 352 to near County Road 272. Phase 4 includes upgrading the last three-mile section of U.S. 67 to reach the Missouri/Arkansas state line. Right of way and easements will be acquired for this project.

With funds previously dedicated to the U.S. 67 corridor and the additional \$60 million in funding from general revenue, this will bring the progress to Neelyville, Missouri and will allow a portion of Phase 3 to be constructed.

In order to upgrade the area to interstate standards, any at-grade crossings along this section of U.S. 67 will be permanently closed.

CONTACT US

For more information, please contact MoDOT Project Manager Tim Pickett at (573) 472-9003 or MoDOT Area Engineer Matt Wilkerson at (573) 472-5235. Interested persons can also sign-up for project updates at www.modot.org/futureI57.



IMPROVE SAFETY

Particularly at Route 142, where there are higher turning volumes, the project will be completed in an effort to improve safety along the corridor.



INCREASE EFFICIENCY

With projected traffic demands, reducing congestion and increasing efficiency is vital. Over the next two decades, traffic is expected to double along the entire corridor.



ADDRESS DEFICIENCIES

Existing U.S. 67 currently has substandard geometrics and inadequate cross sections.



ENHANCE CONNECTIVITY

Upgrading U.S. 67 to interstate standards will improve connectivity along the corridor between I-55 in Jefferson County to the MO/AR state line, as well as continuity of the National Highway System. To the south, Arkansas is also making strides to improve U.S. 67 with \$150 million of improvements programmed beginning at the state line. This will be key once MoDOT moves forward with Phase 4 at the MO/AR state line.

Upgrading this section of U.S. 67 to enhance connectivity is also part of MoDOT honoring its commitments. This project has been a priority for Ozark Foothills Regional Planning Commission, Butler County and the City of Poplar Bluff.



HISTORY AND FUNDING

In fall 1997, MoDOT initiated the Route 67 Environmental Impact Statement (EIS) in Madison, Wayne, and Butler Counties.

Initially, U.S. 67 was upgraded from Fredericktown in Madison County to north of Poplar Bluff in Butler County thanks to the partnership of the Highway 67 Corporation, MoDOT and the U.S. Army Corps of Engineers. Funding was secured for the project after Poplar Bluff voters passed a tax to pay for a portion of the construction, Missouri voters passed Amendment 3 and an agreement was reached with the Army Corps of Engineers.

A ribboncutting ceremony was held in August 2011 to celebrate the improvements from Fredericktown to Poplar Bluff, but there has been a continued desire to reach the state line. MoDOT has made efforts to upgrade U.S. 67 and get closer to this ultimate goal. However, due to limited transportation funding, a section of U.S. 67 south of Poplar Bluff was left unfunded and without upgrades.

In Aug. 2019, the voters of the City of Poplar Bluff overwhelmingly approved a ballot measure led by the Highway 67 Corporation to fund the expansion of U.S. 67 south of Poplar Bluff, which supports plans for Future I-57. In Dec. 2019, Gov. Mike Parson announced Phase 1A for inclusion in his transportation cost share program.

In the FY 2025 budget, \$60 million in General Revenue funding was approved by Gov Parson and the General Assembly. With funds previously allocated to U.S. 67 and the additional \$60 million, 7 miles of upgrades are expected. This brings the progress to Neelyville and leaves 4.5 miles unfunded to reach the state line. Current 2024 cost estimates for the last remaining section total \$90-120 million.

There is hope for additional funding since the General Assembly gave approval for another \$90 million in appropriations. This gives permission for any federal grant funding received to go directly to U.S. 67, subject to approval from the Missouri Highways and Transportation Commission.

CURRENT PROJECT TIMELINE

Value Engineer Study Completed Dec. 2020

EIS Reevaluation Approved Jan. 2021

Access Justification Report Approved April 27, 2021

Phase 1A Completed November 2023

Letting for Phases 1B & 2 Tentatively September 2024

Phases 1B & 2 Construction Begins As Early as November 2024

Phases 1B & 2 Completion Fall/Winter 2026

Letting for Last Funded Section To Be Determined

Construction for Last Funded Section To Be Determined

EXHIBIT 1: BEGINNING OF PHASE 3

Scan Here for a Detailed View or Click the QR Code if Viewing via Desktop

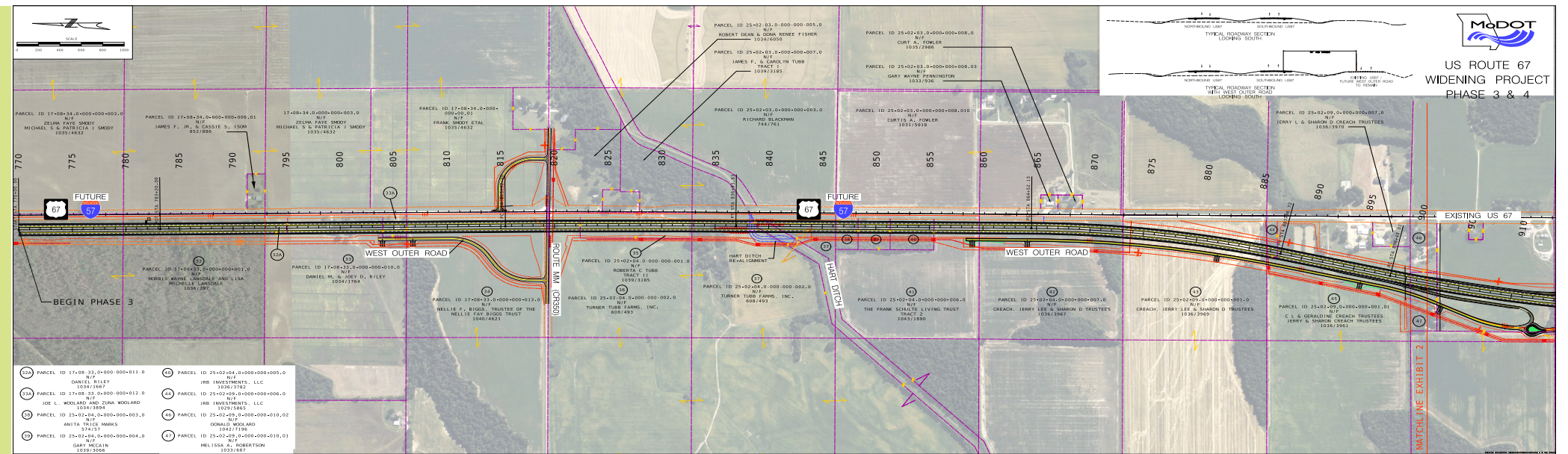


EXHIBIT 2: NORTH OF MO 142 TO CRD 272

Scan Here for a Detailed View or Click the QR Code if Viewing via Desktop

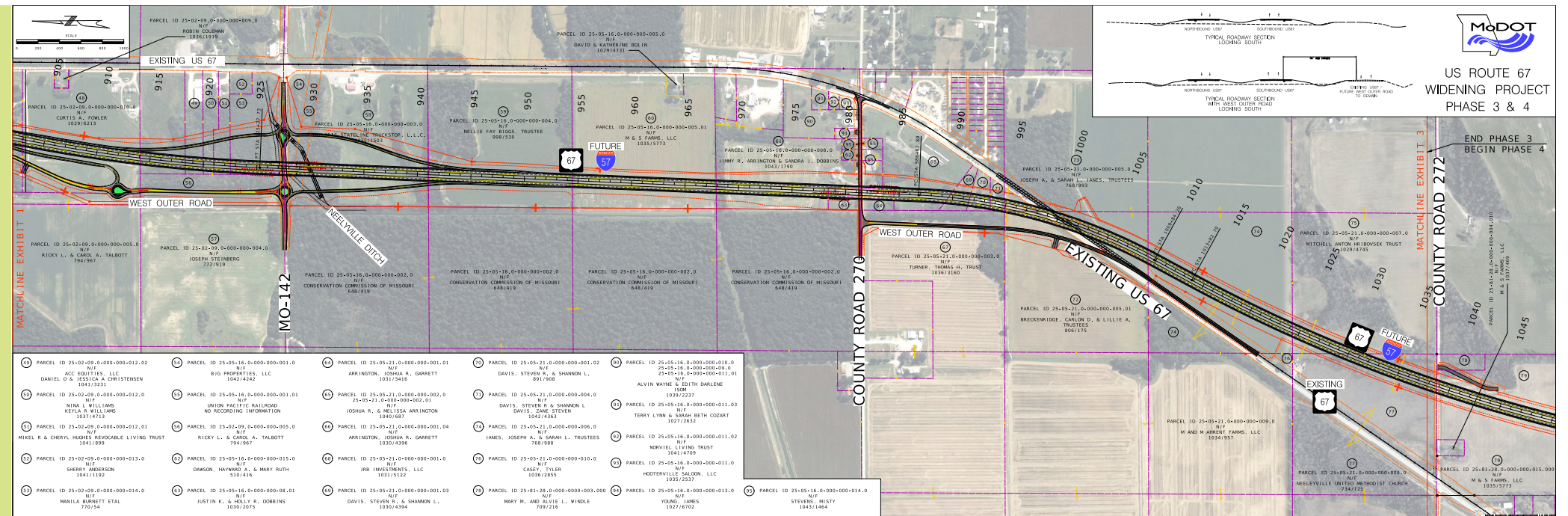


EXHIBIT 3: CRD 272 TO THE MO/AR STATE LINE

Scan Here for a Detailed View or Click the QR Code if Viewing via Desktop

