

Intersection Improvements at U.S. 61 - Route A in New London

Intersection improvements located along U.S. Route 61 will be coming in the future at New London. A Citizens Advisory Group (CAG) was formed in early 2017 to assist in exploring how to reduce fatalities and severe crashes along the U.S. 61 corridor at this location.

While 94% of all crashes involve human error, the most difficult traffic movements at the U.S. 61 / Route A and the U.S. 61/ Fifth Street intersections are those involving median crossovers. The MoDOT in coordination with the CAG explored several options which balance access and safety while considering comments on various platforms.

Safety

Access



Project Specific Recommendations

- Add dedicated right turn lane at on-ramp of U.S. 61/MO 19 interchange
- Install offset left turn lanes on U.S. 61 at Route A (similar to Ross Street in Palmyra)
- Remove access to cross straight over four lanes of U.S. 61 (median crossovers) at Route A, 5th Street, Kingsville Road (Right-in, Right-out access)
- Install median U-turn on U.S. 61, 1/4 mile north of Route A
- Additional acceleration and deceleration lanes

2014 - 2018 Crash Statistics

Route A

1 Fatal Crash

3 Disabling Injury Crashes

4 Minor Injury Crashes

20 Total Crashes

5th Street

4 Disabling Injury Crashes

3 Minor Injury Crashes

12 Total Crashes

Short-term safety improvements, including new signing, striping, advance rumble strips, flashers, and tree trimming to increase sight distance, have been completed in this area with additional plans for further improvements within the next few years.



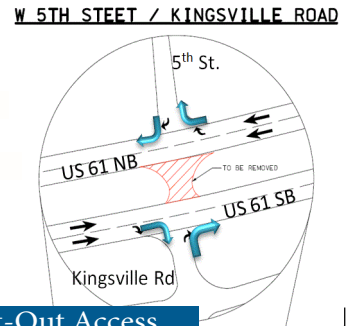
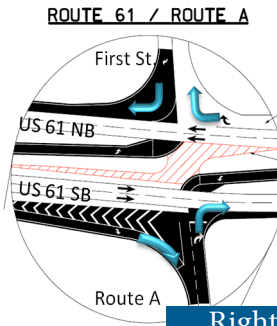
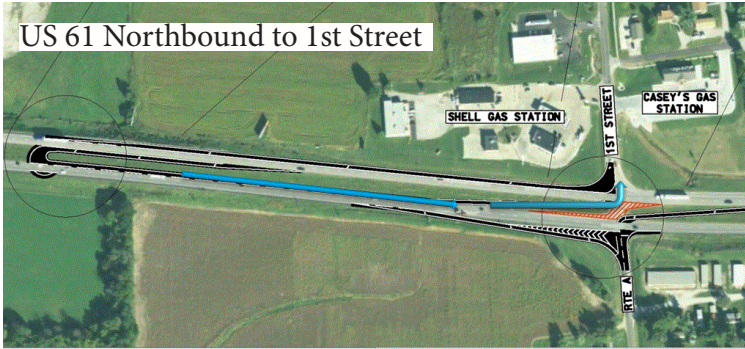
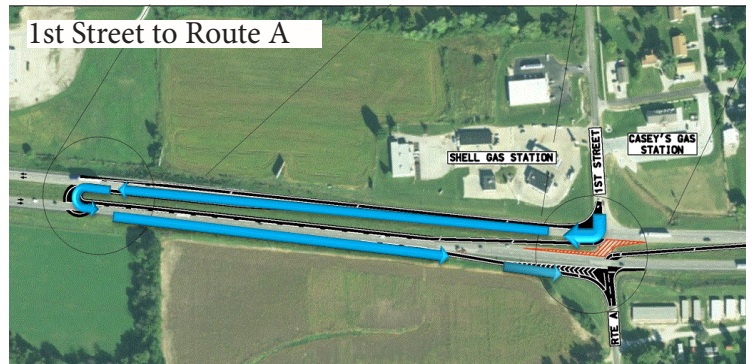
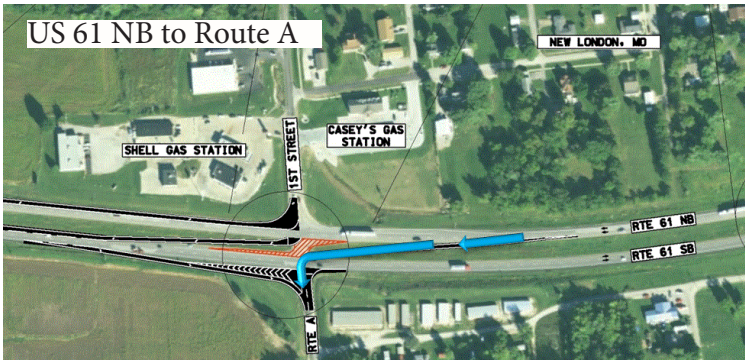
On October 23, 2019 Missouri was the recipient of a National Roadway Safety Award for the median u-turn program which reduced the number of severe and fatal injury crashes. The median U-turn installations at three locations in central Missouri have reduced the overall crash rate by 50 percent, and ended the serious-injury and fatal crashes at those locations.



To stay updated on the progress of this project, sign up for email and text alerts at <https://www6.modot.mo.gov/eMoDOTWeb/jsp/signon/signon.jsp>. For more information contact MoDOT's Customer Service Center toll-free at 1-888-ASK MoDOT (275-6636).

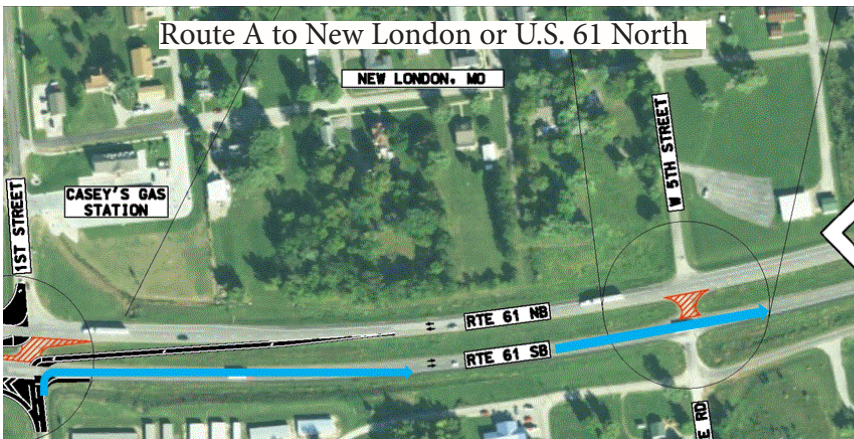
You can also visit us online at www.modot.org/northeast





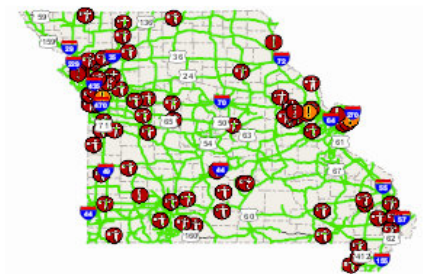
Right-In, Right-Out Access

To find more information on this project, please visit us at:
www.modot.org/ralls-county
 We invite you to please take the survey and share your comments
 at: <https://www.surveymonkey.com/r/26QDNZD>



Traveler Information Map

Check MoDOT's Traveler Info Map for weather-related road conditions, flood closures & work zone locations.



Today is Buckle Up Phone Down Day
 Accept the Challenge Today!

To stay updated on the progress of this project, sign up for email and text alerts at <https://www6.modot.mo.gov/eMoDOTWeb/jsp/signon/signon.jsp>. For more information contact MoDOT's Customer Service Center toll-free at 1-888-ASK MoDOT (275-6636).



You can also visit us online at www.modot.org/northeast