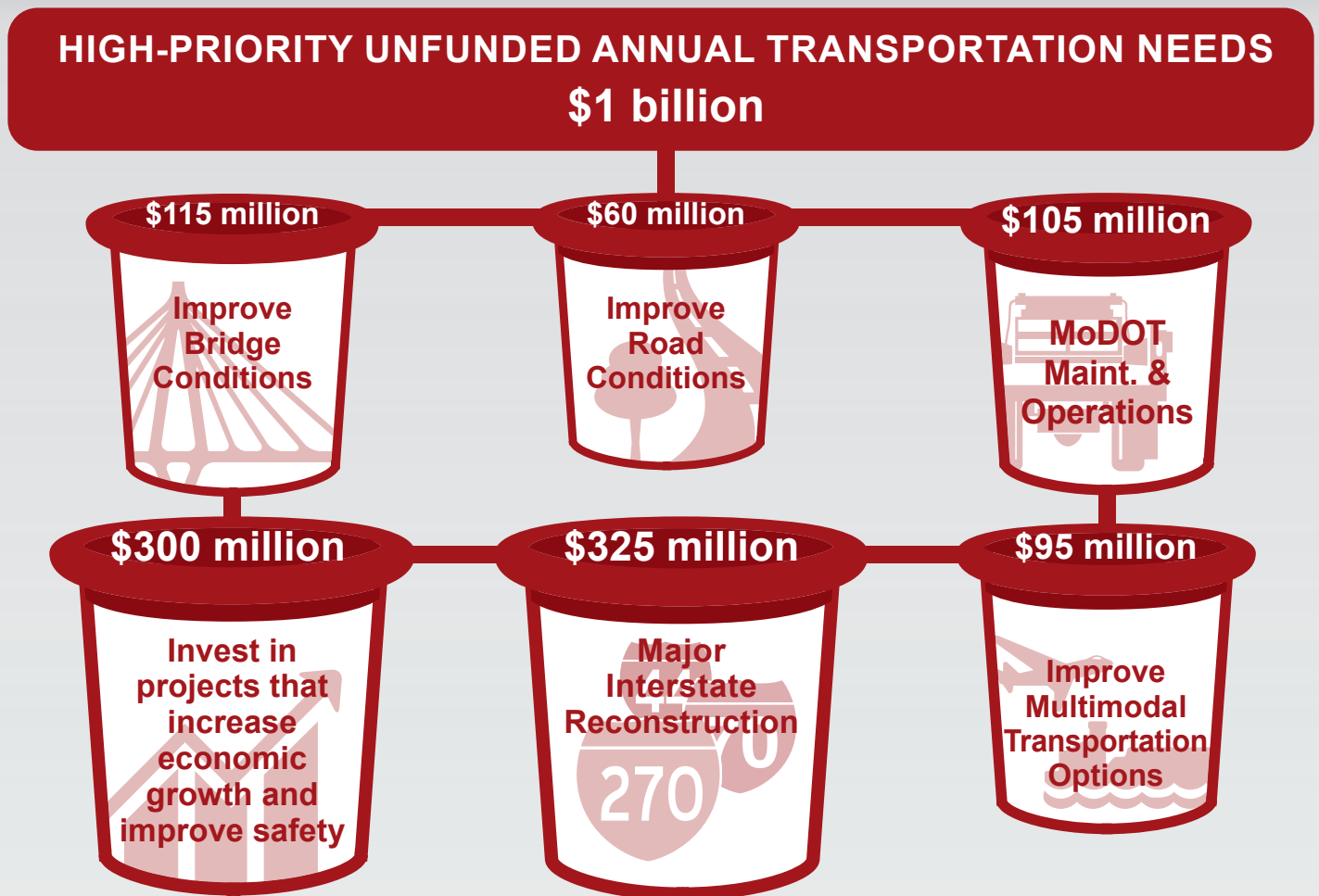


High-Priority Unfunded TRANSPORTATION NEEDS

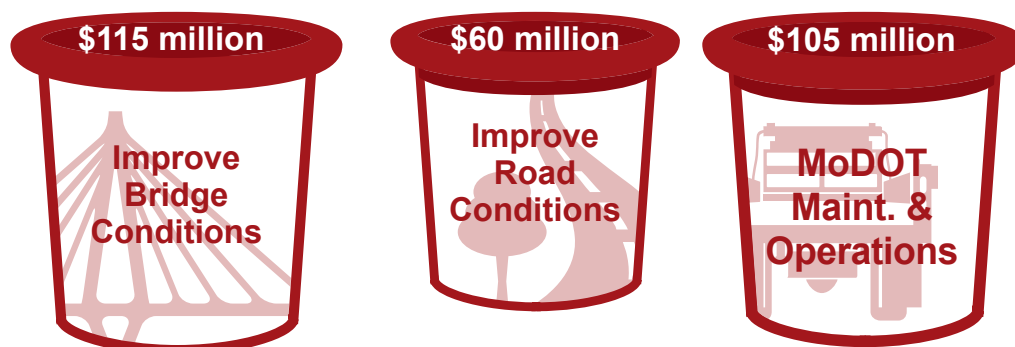
What are Missouri's Transportation Needs?

When MoDOT completed its current long-range transportation plan, extensive input from Missourians resulted in five goals for the state's transportation system over the next 20 years:

1. Take care of the transportation system and services we enjoy today.
2. Keep all travelers safe – no matter the mode of transportation.
3. Invest in projects that spur economic growth and create jobs.
4. Give Missourians better transportation choices.
5. Improve reliability and reduce congestion on Missouri's transportation system.



With MoDOT's current available resources, the reality is that the department must focus its attention on keeping the existing system in the condition that it is in today. To do that, some MoDOT districts must devote every available dollar to maintaining the condition of their roads and bridges, and they are still going to lose ground over time. That leaves a number of unfunded transportation needs.



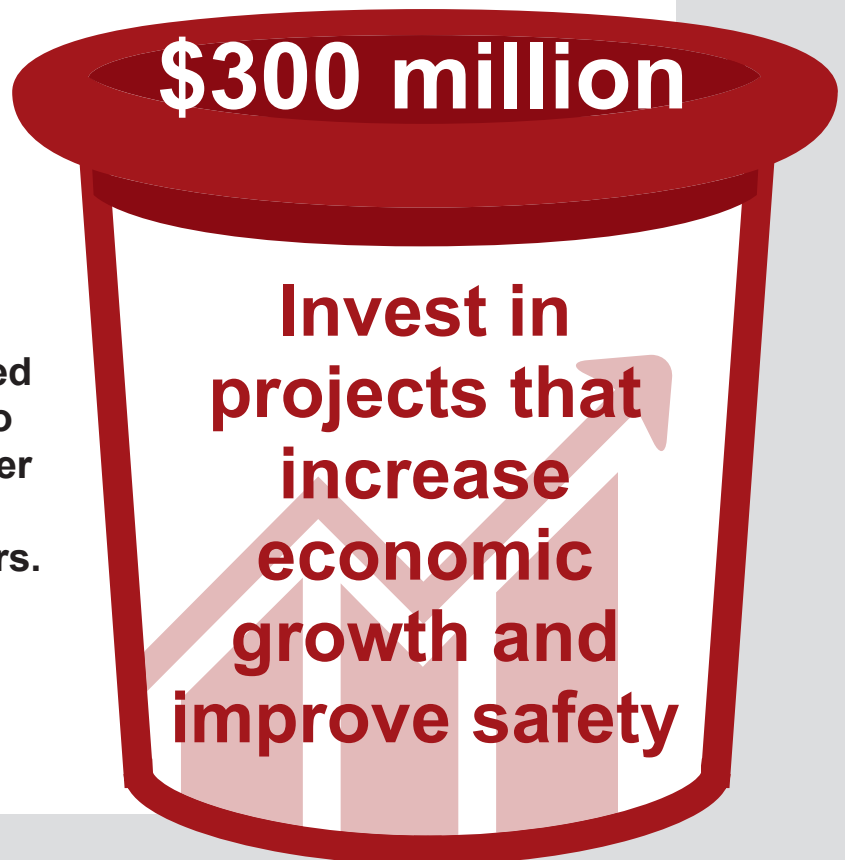
Improve road and bridge conditions – Investing an additional \$280 million per year would enable all of MoDOT's districts to adequately maintain their existing system, begin driving down the state's number of poor bridges, improve the condition of the state's roads and stabilize the level of MoDOT's maintenance and operations efforts to keep pace with inflationary cost increases. **The required investment equates to an average of \$5.48 per month by each of the state's licensed drivers.**

In Fall 2022, MoDOT and its regional planning partners prioritized \$4.7 billion in road and bridge unfunded project needs in three tiers. Tier one includes \$528 million. Tier two is worth \$2 billion in needs and tier three includes \$2.2 billion. Additionally there are \$1 billion in multimodal needs. There is an additional nearly \$4 billion identified statewide unfunded needs primarily focused on improving Interstate 70.

High-Priority Unfunded TRANSPORTATION NEEDS

Invest in projects that increase economic growth and improve safety – These are the projects that local communities across the state are clamoring for but which are unaffordable in today’s financial environment. Projects include new interchanges, adding shoulders with rumble stripes and adding lanes to the current system. In addition to congestion reduction and economic growth benefits, all of these projects would improve safety so fewer fatalities and serious injuries occur.

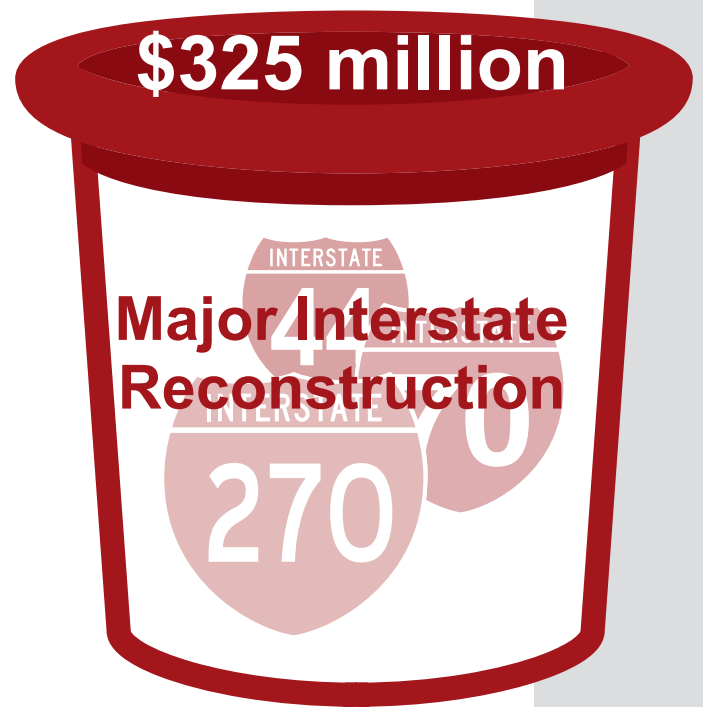
An additional investment of \$300 million per year would allow MoDOT to begin meeting those needs. MoDOT would work with its regional planning partners to ensure the highest priorities would be funded. **The required investment equates to an average of \$5.87 per month by each of the state’s licensed drivers.**



Major interstate highway reconstruction – The nation’s interstate system is now 65 years old, and Missouri’s interstates were built with a 20-year life expectancy. They need attention. The poster child for Missouri’s interstate needs is Interstate 70 – the nation’s oldest interstate. MoDOT has known for years that it needs to be reconstructed with added capacity to reliably handle mounting levels of traffic, especially long-haul trucks. The project, though, has been and continues to be unaffordable.

The state’s other six interstates will also be facing improvement/preservation needs in the coming years. An additional \$325 million per year would allow MoDOT to begin tackling this long overdue improvement. **The required investment equates to an average of \$6.36 per month by each of the state’s licensed drivers.**

Many Missourians depend on non-highway modes of transportation; however, the state currently invests very little money toward those needs.



Please visit www.modot.org/planning-and-performance-support-0 for a list of specific unfunded needs for each region of the state.

High-Priority Unfunded TRANSPORTATION NEEDS

\$95 million

**Improve
Multimodal
Transportation
Options**

**Improve multimodal
transportation options –**

Missouri's transit systems, railroads, ports, waterways, airports and bicycle/ pedestrian facilities could begin to see much needed improvements with an annual investment of \$95 million.

MoDOT would work with the owners and stakeholders of these transportation systems, along with our regional planning partners, to identify and fund the highest

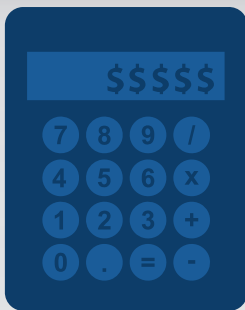
priority needs. **The required investment equates to an average of \$1.86 per month by each of the state's licensed drivers.**



CITIZEN'S GUIDE TO TRANSPORTATION FUNDING IN MISSOURI

In summary, Missourians enjoy access to a large transportation system that keeps us connected. Maintaining and improving the transportation system is expensive but is a worthwhile investment. The average Missouri driver contributes about \$32 per month to fund their access to the transportation system and the services MoDOT provides.

Incremental increases in funding for improving road and bridge conditions, investing in projects that increase economic growth and safety, reconstructing major interstates and improving multimodal transportation options can offset the \$511 of hidden costs drivers are paying each month due to congestion, rough roads and traffic crashes.



MONTHLY COSTS OF ADDITIONAL BENEFITS

The average driver in Missouri pays \$32 per month in federal and state taxes/fees to support Missouri's system of roads and bridges.

Based on 13,476 miles driven per year at 22.9 mpg, plus the average motor vehicle sales tax per driver.

Additional Investments Needed to Improve Missouri's Transportation System

